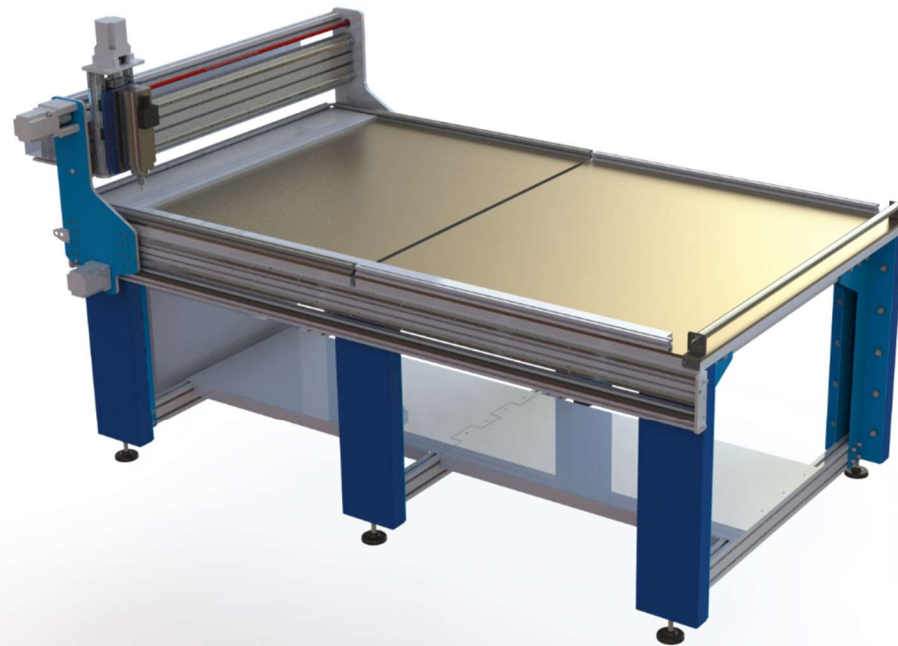


PROFESSIONAL CNC SOLUTION
CNC MACHINING CENTER



FREIXAS I ROS, S.L.



Automàtica + Comunicacions

Freixas i Ros S.L.

C/ Agricultura, 128

08223 TERRASSA

(SPAIN)

Tel. +34937362700

info@freixasiros.com

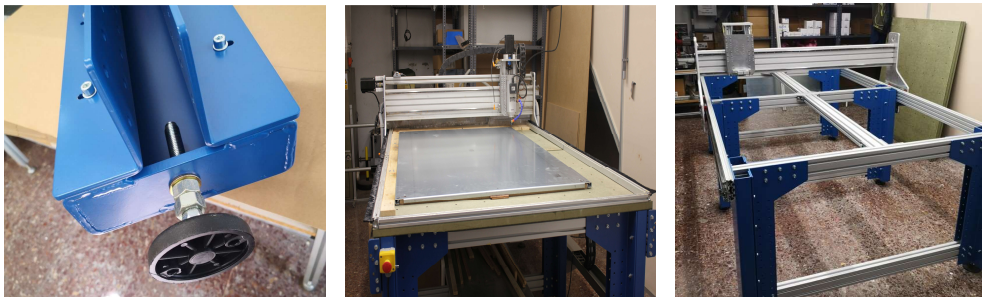
www.freixasiros.com



FIRBOTS CNC V2 PROFILE

Product Description / Datasheet

- With functions of milling, drilling, tapping, routing, chamfering, applicable for multiple materials, such as, aluminium, iron, etc.
- Automatic Programmable using open-source PC software.
- Frame and chassis manufactured with CNC, over-dimensioned structure.
- Designed for drilling plates as electrical cabinets.
- Technical specifications may vary according to the needs of our customers.
- Fully automated CNC, through by PC software.
- Electrical protection and control equipment, with safety relay, and VF controller for Spindle.
- CE marking, with technical file.



Technical Data

STROKE

Stroke for X Axis	1210 mm
Stroke for Y Axis	2000 mm
Stroke for Z Axis	84 mm

SPINDLE

Spindle Speed	18,000 rpm
spindle tool taper	Er20

ELECTRIC MOTOR POWER

X/Y/Z	Nema34 Hybrid Steeping Motor
-------	------------------------------

LUBRICATING SYSTEM

Lubricating System	Nebulized air Pressurized
Cooling System	Cooltube 2210EP oil

SPEED & PRECISION

Axis X	0,05 / 37,4 mm-s
Axis Y	0,05 / 109,6 mm-s
Axis Z	0,05 / 37,4 mm-s

TRANSMISSION

Motion Transmission X	Hiwin Linear guideway with Ballscrew
Motion Transmission y	Toothed Rack Mod 3
Motion Transmission Z	Hiwin Linear guideway with Ballscrew

SIZING

Air Pressure	8 bar
Operation System	1885 x 2685 x 1610 mm
Height	1410 mm
Full Area	X 1350 x Y1 Y2 2335 x Z 180 mm
Operative Area	X 1210 x Y1 Y2 2100 x Z 80 mm
Weight	450 kgs.