

---

**ST. JOHN'S NATIONAL ACADEMY OF HEALTH SCIENCES**



**ST. JOHN'S MEDICAL COLLEGE**

**AND**

**ST. JOHN'S INSTITUTE OF ALLIED HEALTH SCIENCES**

**BENGALURU - 560 034**

**PROSPECTUS**

**2023 - 2024**



## INDEX

SR. NO	PARTICULARS	PAGE NO
<b>1</b>	<b>St. John's National Academy of Health Sciences - An Overview</b>	<b>7</b>
<b>1.1</b>	<b>Introduction, Aims and Objectives</b>	<b>7</b>
<b>1.2</b>	<b>Leadership</b>	<b>8</b>
<b>1.3</b>	<b>History</b>	<b>10</b>
<b>1.4</b>	<b>Milestones</b>	<b>14</b>
<b>1.5</b>	<b>Educational Priority</b>	<b>14</b>
<b>1.6</b>	<b>Campus and infrastructure</b>	<b>15</b>
<i>1.6.1</i>	<i>St. John's Medical College (SJMC)</i>	<i>16</i>
<i>1.6.2</i>	<i>The Zablocki Learning Centre-Central Medical Library</i>	<i>16</i>
<i>1.6.3</i>	<i>St. John's Medical College Hospital</i>	<i>17</i>
<i>1.6.4</i>	<i>Innovative Teaching- Learning at St. John's</i>	<i>18</i>
<i>1.6.5</i>	<i>Research at St. John's</i>	<i>20</i>
<b>1.7</b>	<b>Student life on the campus of St. John's Medical College</b>	<b>21</b>
<b>1.8</b>	<b>Campus discipline</b>	<b>24</b>
<b>2</b>	<b>MEDICAL GRADUATE DEGREE (MBBS) COURSE</b>	<b>30</b>
<b>2.1</b>	<b>MBBS Application, counselling and Admission Procedure</b>	<b>30</b>
<i>2.1.1</i>	<i>General Information</i>	<i>30</i>
<i>2.1.2</i>	<i>Eligibility for MBBS Course- MCI Criteria</i>	<i>30</i>
<i>2.1.3</i>	<i>MBBS seat matrix for SJMC</i>	<i>31</i>
<i>2.1.4</i>	<i>MBBS seat matrix defining criteria for categories</i>	<i>31</i>
<i>2.1.5</i>	<i>Common counselling for MBBS admissions by KEA</i>	<i>32</i>
<i>2.1.6</i>	<i>Additional original documents to be produced at the KEA document verification for SJMC admissions 2023</i>	<i>32</i>
<i>2.1.7</i>	<i>Templates of additional certificates for MBBS admission to SJMC</i>	<i>34</i>
<i>2.1.8</i>	<i>Fees for MBBS course</i>	<i>38</i>
<i>2.1.8.1</i>	<i>Fee Chart –MBBS 2023</i>	<i>38</i>
<i>2.1.8.2</i>	<i>Fee refund policy on discontinuation of the course</i>	<i>39</i>
<b>2.2</b>	<b>MBBS Degree Course details</b>	<b>39</b>
<i>2.2.1</i>	<i>MBBS course Outline</i>	<i>39</i>
<i>2.2.2</i>	<i>Essentials for qualifying to appear in professional examination</i>	<i>40</i>
<b>3.</b>	<b>MEDICAL POSTGRADUATE DEGREE COURSES (MD/MS)</b>	<b>42</b>
<b>3.1</b>	<b>Procedure for Application, Counselling and Admission for Postgraduate course</b>	<b>42</b>
<i>3.1.1</i>	<i>General information</i>	<i>42</i>
<i>3.1.2</i>	<i>Seat matrix for medical PG (MD/MS)</i>	<i>43</i>
<i>3.1.2.1</i>	<i>Rules for seat allocation</i>	<i>44</i>
<i>3.1.3</i>	<i>Eligibility for application for PG (MD/MS)</i>	<i>44</i>
<i>3.1.4</i>	<i>Application process</i>	<i>44</i>
<i>3.1.4.1</i>	<i>Additional documents to be submitted for SJMC admission at the time of KEA verification</i>	<i>44</i>

3.1.5	<i>Documents to be submitted to the college at admission</i>	46
3.1.6	<i>Fee for MD/MS courses</i>	47
3.1.6.1	<i>Fee chart</i>	47
3.1.6.2	<i>Fees to be paid at admission</i>	48
3.1.6.3	<i>Guidelines for fee payment from second year onwards</i>	48
3.1.6.4	<i>Fee refund policy on discontinuation of the course</i>	48
3.1.7	<i>Stipend</i>	49
3.1.8	<i>Scholarships</i>	49
3.1.9	<i>Duties and responsibilities of PG students</i>	49
<b>4.</b>	<b>MEDICAL SUPERSPECIALITY DEGREE COURSE (DM, M.Ch)</b>	<b>50</b>
4.1	<b>Procedure for application for DM/M.Ch.</b>	<b>50</b>
4.1.1	<i>General information</i>	50
4.1.2	<i>Super speciality courses list with eligibility criteria</i>	50
4.1.3	<i>Application and admission process</i>	51
4.1.4	<i>Documents to be submitted at the time of admission</i>	51
4.1.5	<i>Fees for the Super speciality courses</i>	51
4.1.5.1	<i>Fee chart</i>	51
4.1.5.2	<i>Guidelines for fee payment</i>	52
4.1.5.3	<i>Fee refund policy on discontinuation of the course</i>	52
4.2	<b>Procedure for application for DNB</b>	<b>52</b>
4.2.1	<i>General information</i>	52
4.2.2	<i>Super Speciality Courses list with eligibility criteria</i>	53
4.2.3	<i>Application and admission process</i>	53
4.2.4	<i>Fees for the DNB courses</i>	53
4.3	<i>Stipend</i>	53
4.4	<i>Hostel accommodation</i>	53
4.5	<i>Duties and responsibilities of Super specialty students</i>	53
<b>5.</b>	<b>MEDICAL POSTDOCTORAL FELLOWSHIP AND CERTIFICATE COURSES</b>	<b>54</b>
5.1	<b>Procedure for application for admission for one year Postgraduate Doctoral Fellowship courses (PDCC)</b>	<b>54</b>
5.1.1	<i>General information</i>	54
5.1.2	<i>Application procedure for PDCC</i>	56
5.1.3	<i>Documents to be submitted to SJMC at admission</i>	56
5.1.4	<i>Stipend</i>	56
5.1.5	<i>Hostel accommodation</i>	56
5.1.6	<i>Duties and responsibilities</i>	56

<b>6.</b>	<b>ALLIED HEALTH SCIENCES - Procedure for application, selection and admission for all (UG and PG) courses</b>	57
6.1	<i>AHS courses list (UG and PG) and duration</i>	57
6.2	<i>Admission calendar for AHS admissions 2023-2024</i>	58
6.3	<i>Application procedure for all AHS courses including B.Sc.,BPT, M.Sc., MLT, MPT, MHA and DHA</i>	59
6.3.1	<i>General instructions</i>	59
6.3.2	<i>Application fee</i>	59
6.3.3	<i>Instruction for filling the online application form</i>	60
6.3.4	<i>Selection policy for admission</i>	61
6.4	<i>Entrance Exam &amp; Interview</i>	62
6.5	<i>Admission of Students</i>	63
6.6	<i>Fee chart for AHS Courses for 2023</i>	65
6.6.1	<i>Guidelines for fee payment</i>	65
6.6.2	<i>Fee refund policy in case of course discontinuation</i>	66
<b>7.</b>	<b>ALLIED HEALTH SCIENCES - GRADUATE PROGRAMME</b>	67
7.1	<i>General information and scope for AHS</i>	67
7.2	<i>Eligibility criteria for admission for AHS and Physiotherapy Graduate Programme</i>	67
7.3	<i>Fee Chart</i>	68
7.4	<i>Hostel accommodation</i>	68
7.5	<i>Course curriculum</i>	68
7.6	<i>Compulsory rotating internship</i>	68
7.7	<i>Attendance</i>	69
7.8	<i>Internal assessment</i>	69
7.9	<i>University examination</i>	69
<b>8.</b>	<b>POSTGRADUATE DEGREE IN ALLIED HEALTH SCIENCES (M.Sc. MLT)</b>	70
8.1	<i>M.Sc. MLT</i>	70
8.1.1	<i>General information and scope</i>	70
8.1.2	<i>Eligibility</i>	70
8.1.3	<i>Hostel accommodation</i>	70
8.1.4	<i>Course curriculum</i>	71
8.1.5	<i>Attendance</i>	71
8.1.6	<i>Internal assessment</i>	71
8.1.7	<i>University examination</i>	71
8.2	<b>Master of Physiotherapy (MPT)</b>	72
8.2.1	<i>General information and scope</i>	72
8.2.2	<i>Eligibility</i>	72
8.2.3	<i>Hostel accommodation</i>	73

8.2.4	<i>Course curriculum</i>	73
8.2.5	<i>Attendance</i>	73
8.2.6	<i>University examination</i>	73
<b>9.</b>	<b>POSTGRADUATE HOSPITAL ADMINISTRATION (MHA)</b>	<b>74</b>
9.1	<i>General information and scope</i>	74
9.2	<i>Course and duration</i>	74
9.2.1	<i>Eligibility</i>	74
9.2.2	<i>Course curriculum</i>	75
9.2.3	<i>Attendance</i>	75
9.2.4	<i>Internal assessment</i>	75
9.2.5	<i>University examination</i>	75
9.3	<b>Diploma in Hospital Administration (DHA)</b>	76
9.3.1	<i>Duration of the course</i>	76
9.3.2	<i>Eligibility for admission</i>	76
9.3.3	<i>Course curriculum</i>	76
9.3.4	<i>Assessment and examination</i>	76
<b>10.</b>	<b>DOCTORAL (Ph.D.) PROGRAMME</b>	<b>77</b>
<b>11.</b>	<b>FACULTY PROFILE</b>	<b>78</b>
<b>12.</b>	<b>SCHOLARSHIPS</b>	<b>98</b>
<b>13.</b>	<b>AWARDS AND PRIZES</b>	<b>105</b>

---

# **1. ST. JOHN'S NATIONAL ACADEMY OF HEALTHSCIENCES - AN OVERVIEW**

## **1.1 INTRODUCTION, AIMS, VISION, MISSION AND OBJECTIVES**

### **INTRODUCTION**

The Catholic Bishops' Conference of India (CBCI) established St. John's Medical College in Bengaluru in 1963 with the aim of training healthcare personnel committed to serving the poor and the marginalised. It was dedicated as a memorial of the XXXVIII International Eucharistic Congress held in Bombay in 1964 and named after St. John the Baptist, the Patron of Pope John XXIII, who was an ardent supporter of this initiative of the Catholic Church in India. Admission to this unaided, non-capitation fee, Christian minority, educational institution is on all India merit basis.

### **AIMS**

While the Institution is intended primarily for training Catholics and especially dedicated personnel like Religious Sisters, who operate a large number of hospitals and dispensaries mainly in medically under-served and rural areas of our country, it is open, to all persons irrespective of religion, caste or community. The Institution seeks to make a qualitative contribution to health care, medical education and research through the training of medical, paramedical, nursing, health management, community health workers, and other personnel who are dedicated to the Healing Ministry in the Spirit of Christ. The Medical College Hospital is intended to assist in the training and to render service in health care to all people irrespective of religion, caste or community, particularly the underprivileged and disadvantaged.

### **Vision**

A world where quality healthcare is accessible and affordable even to the poorest.

### **Mission**

Education and empowerment of healthcare personnel committed to serve, especially the underserved, with integrity and compassion, in the spirit of Christ

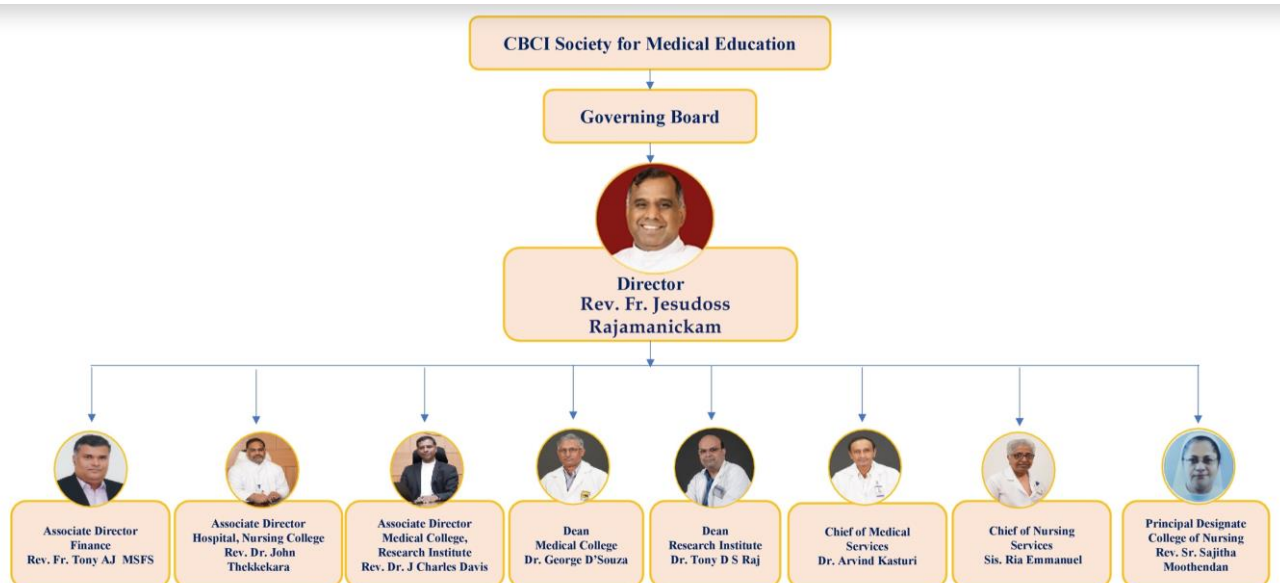
### **OBJECTIVES**

1. Pursue excellence in medical education.
2. Integrate Nursing Education with Nursing Service for achieving nursing excellence.
3. Promote research in health sciences to improve quality of education and healthcare.
4. Provide service with empathy and compassion, especially for the medically underserved.
5. Offer opportunities for medical and nursing education to the underprivileged.
6. Impart value-based education and ethics in healthcare practice.
7. Ensure respect for life, from the moment of conception to its natural end.
8. Promote holistic health and wellbeing in communities.
9. Witness to a life of honesty and integrity through uncompromising adherence to ethical principles and moral values.

## 1.2 LEADERSHIP

### Governing Board

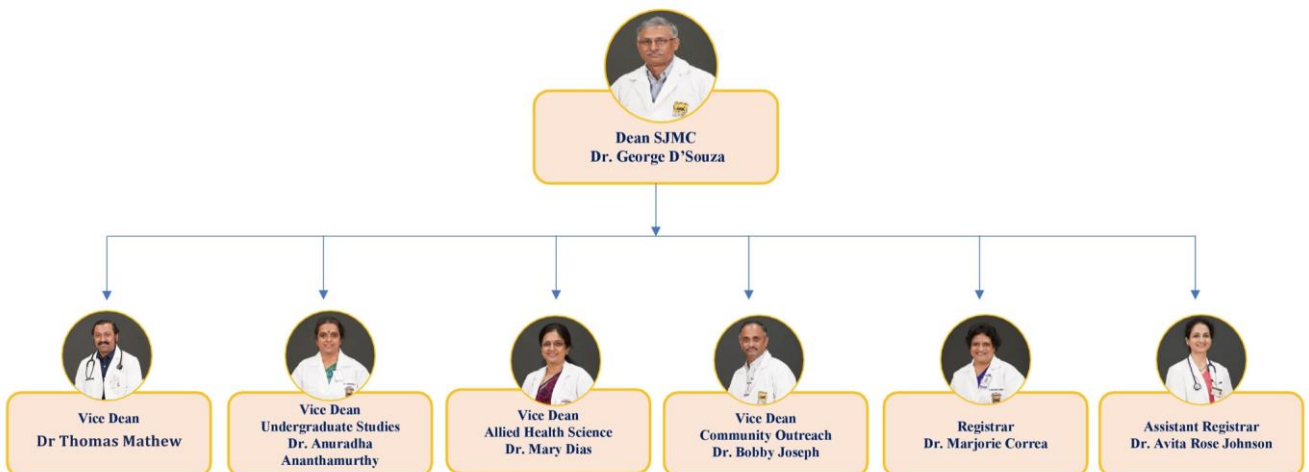
<b>Most Rev. George Antonysamy</b>	<b>Chairman, Archbishop of Madras - Mylapore</b>
<b>Most Rev. Joshua Mar Ignathios</b>	<b>Bishop of Mavelikara</b>
<b>Most Rev. Peter Machado</b>	<b>Archbishop of Bangalore</b>
<b>Most Rev. Raphy Manjaly</b>	<b>Archbishop of Agra</b>
<b>Most Rev. Elias Gonsalves</b>	<b>Archbishop of Nagpur Most</b>
<b>Rev .Alex Vadakumthala</b>	<b>Bishop of Kannur</b>
<b>Most Rev. Lumen Monteiro</b>	<b>Archbishop of Agartala</b>
<b>Most Rev. Mar Mathew Moolakkatt, OSB</b>	<b>Archbishop of Kottayam</b>
<b>Rev. Fr. Jesudoss Rajamanickam</b>	<b>Director, St. John's National Academy of Health Sciences</b>
<b>Rev. Fr. Tony A J</b>	<b>Associate Director, Finance, St. John's National Academy of Health Sciences</b>
<b>Rev. Dr. John Varghese</b>	<b>Associate Director, St. John's Medical College</b>
<b>Hospital Rev. Dr. J. Charles Davis</b>	<b>Associate Director, St. John's Medical College</b>
<b>Dr. George A. D'Souza</b>	<b>Dean, St. John's Medical College</b>
<b>Dr. Tony D.S. Raj</b>	<b>Dean, St. John's Research Institute</b>
<b>Dr. Arvind Kasthuri</b>	<b>Chief of Medical Services, St. John's Medical College Hospital</b>
<b>Sr. Ria Emmanuel</b>	<b>Chief of Nursing Services, St. John's Medical College Hospital</b>
<b>Sr. Sajitha Moothedan</b>	<b>Principal, St. John's College of Nursing</b>





## St. John's Medical College

<b>Rev. Fr. Jesudoss Rajamanickam</b>	<b>Director, SJNAHS</b>
<b>Rev. Dr. J. Charles Davis</b>	<b>Associate Director, SJMC</b>
<b>Dr. George A. D'souza</b>	<b>Dean, SJMC</b>
<b>Dr. Anuradha Ananthamurthy</b>	<b>Vice-Dean (Undergraduate)</b>
<b>Dr. Thomas Mathew</b>	<b>Vice-Dean (Postgraduate)</b>
<b>Dr. Mary Dias</b>	<b>Vice-Dean (Allied Health Sciences)</b>
<b>Dr. Bobby Joseph</b>	<b>Vice-dean (Community Outreach and Distance Education)</b>
<b>Dr. Marjorie M.A. Correa</b>	<b>Registrar</b>
<b>Dr. Avita Rose Johnson</b>	<b>Assistant Registrar</b>



### 1.3 A BRIEF HISTORY OF ST JOHN'S

The role of the Catholic Church in healthcare in India developed during the 19th century, with the entry of several orders of nuns who combined their spirituality with a commitment to healthcare most notably for women, children and social outcasts.



Dr. Agnes McLaren from Scotland was moved by stories of the plight of Indian women who on account of the purdah system died in large numbers during childbirth since they would not see male doctors for cultural reasons. She moved to India and set up St Catherine's Hospital in Rawalpindi (now in Pakistan) in 1909. However, she realized that she alone would not be able to do much and hence embarked on a global effort to encourage women doctors to work in the sub-continent. At that time, priests and religious sisters were forbidden by the Catholic Church to study and practice medicine and midwifery. Though in her 70's, Dr McLaren travelled to Rome five times to petition for a change in this law.



St. Catherine's Hospital, Rawalpindi, India



Inspired by Agnes McLaren, Anna Dengel began corresponding with her from Austria. Unfortunately Agnes died before they could meet. After receiving her medical training in Ireland, Dengel came to Rawalpindi to continue the work of Agnes McLaren. Anna saw that the only way forward would be the formation of a group of female health workers trained in all branches of health care who would dedicate their lives to the medical mission apostolate as religious sisters. Like McLaren before her, she too petitioned Rome to change Canon Law to allow religious nuns and priests to become doctors and practice medicine. She then founded the Society for Catholic Medical Missionaries in

1925, but was able to take her canonical vows as Sr. Dr. Anna Dengel only in 1936, after Vatican lifted the restrictions of practice of medicine by religious sisters.

In distant Melbourne, Dr. Mary Glowrey read a pamphlet called 'Dr. Agnes McLaren' that urged medical women to aid the women of India. Inspired by Agnes, she arrived in India in 1920. She joined the congregation of Jesus, Mary and Joseph and two years after her religious training, she started her medical practice as a sister-doctor, after receiving special permission from Pope Benedict XV. Sister Mary of the Sacred Heart, as Mary Glowrey was known, was the first Catholic religious nun to practise as a doctor. She started a small clinic in Guntur, Andhra Pradesh, and by the seventh year, was treating around 44,000 outpatients a year. Just like Agnes, she too realized that the problem of lack of doctors in India could not be tackled by a single person or even a small group of committed individuals. To address this, in 1943, in association with 16 other religious sisters, she founded the Catholic Hospital Association of India (CHAI) and suggested the creation of a 'Catholic Medical College' that would be distinguished by its values, ethics and commitment to service





This idea found ardent support in His Grace Thomas Pothacamury, the Bishop of Guntur. In September 1944, the Catholic Bishops Conference of India (CBCI) was formally constituted. It was to this august body that the Most Rev. Pothacamury, by then Archbishop of Bangalore, communicated the idea of a Catholic medical college. This idea was pursued by the CBCI. The translation of this idea into reality required the concerted efforts of many people notably the determination and vision of Archbishop Thomas Pothacamury, Archbishop Louis Mathias of Madras-

Mylapore and His Eminence Valerian Cardinal Gracias-



. Archbishop Louis Mathias' Planning Committee appointed by Cardinal Gracias



formulated a detailed plan for the creation of a Catholic medical college. In 1960, the CBCI took the decision to

establish the college and hospital at Bangalore. His Holiness Pope John XXIII agreed to the college being called "St John's" as a mark of his personal interest in the project and of his approval of its aims and ideals. The college was accordingly named "St John's Medical College" and on 8 July 1963, it opened its doors to the first batch of 50 medical students at its temporary premises at St. Mary's Orphanage in Cooke Town, Bangalore. The cornerstone for the college building was blessed by

Pope John Paul VI on 3 December 1964 during the 38th International Eucharistic Congress in Bombay. His Holiness also established an award in the college in his name; 'The Pope Paul Award' for the best all-round student completing the MBBS course. Rev. Fr. Frank Loesch, a Jesuit priest from Patna, Dr. Louis Monteiro the first Dean of the College and Mr. William Saldanha, the first administrator of the College



**Blessing of the cornerstone of the Medical College Project at the Eucharistic Congress in Mumbai, 3 December 1964**



**Dedication of the College by his Excellency Dr. Zakir Hussain, former President of India, 1968**

were instrumental in overseeing the construction and ensuring the completion of the medical college and hostel buildings.

The dedication of the new college building took place on 29 September 1968, just as the first batch of medical students entered their final year. The occasion was presided over by His Excellency Dr. Zakir Hussain, President of India.





St. Martha's Hospital, operated by the Sisters of the Good Shepherd Congregation was used for clinical training between 1965 and 1983.

On 3 August 1971, the cornerstone of the St John's Medical College hospital was laid. Bishop Jonas Thaliath of Rajkot played a pivotal role in securing funds for the construction and running of the Hospital. It was commissioned on 8 Dec 1975. The final shift from St Martha's Hospital to St John's



By 1994, the college had grown into 5 institutions : St John's Medical College; consistently counted as one of the best in the nation, St. John's Medical College Hospital; a state-of-the art 1800 bed hospital with over 40 medical and surgical departments. St. John's College of Nursing; a much sought-after institute for nursing aspirants, St. John's Research Institute; a first of its kind stand-alone research institute in a medical college and St. John's Institute of Allied Health Sciences which includes physiotherapy and health administration courses along with several para-medical courses. They were all brought under the umbrella of "St Johns National Academy of Health Sciences".



St Johns National Academy of Health Sciences spread over a verdant campus of 140 acres in the salubrious city of Bengaluru, stands testimony to the purpose for which it was established with around 1500 students till date having served for at least 2 years in remote rural areas and over 250 working permanently in underserved areas as it celebrates its Diamond Jubilee this year (2023).



---

## 1.4 MILESTONES

- **1963** – St. John’s Medical College commenced at St. Mary’s Industrial School and Orphanage
- **1964** – The corner stone of St. John’s Medical College was blessed by His Holiness Pope Paul VI at Mumbai on 3rd December, 1964.
- **1965** – Corner stone of St. John’s Medical College laid at the Project site by Sri V. V. Giri, Governor of Karnataka and later President of India
- **1968** – St. John’s Medical College dedicated to Medical Education, Research and Patient Care by His Excellency, Dr. Zakir Hussain, the then President of India
- **1975** – Out-patient department of St. John’s Medical College Hospital was commissioned.
- **1975** – Diploma in Medical Laboratory Technology
- **1980** – St. John’s School of Nursing
- **1985** – Diploma in Radiology
- **1989** – Nursing School upgraded to St. John’s College of Nursing
- **1994** – St. John’s National Academy of Health Sciences
- **1996** – St. John’s Silver Jubilee Auditorium
- **1999** – B.Sc., MLT, B.Sc Radiology & CHCA
- **2000** – B.Sc Perfusion Technology and B. Sc Renal Dialysis Technology
- **2004** – St. John's Research Institute
- **2007** – M.Sc. Medical Laboratory Technology commenced
- **2014** – Golden Jubilee block added to the Medical College
- **2015** – Master of Hospital Administration
- **2016** – Bachelor of Physiotherapy
- **2016** – MBBS admissions upgraded to 150 seats
- **2018** – B.Sc. Operation theatre technology, B. Sc Radiotherapy and B. Sc. Anesthesia Technology
- **2020** – Master of Physiotherapy (MPT)

## 1.5 EDUCATIONAL PRIORITY

Right from its inception, St. John’s has set before itself, **an ideal of academic excellence, as well as service to society, with a holistic approach to the problems of community health.** This Institution of Health and Healing envisages the training and participation of the community (including the rural people and the slum dwellers) in health care, in its preventive, promotive and rehabilitative aspect



---

The Institution expects its students to uphold the **ethical values and principles of morality as interpreted by the Catholic Church**. It prepares students for the role of future leaders, loyal to the highest ideals of the health profession, and at the same time conscious of social, and economic transformation necessary for healthy human existence at both national and global levels. It encourages doctors, nurses, paramedical staff and other health care professionals to work as a team to deliver comprehensive health care, and where required **rise up to the role of leaders in society helping in developmental activities, to improve quality of life**.

In the Indian context, an effective Health Care Delivery System is a must. Growing population, persistent poverty, illiteracy, unemployment, unavailability of health facilities to a larger section of people, makes the task even more complicated. Today's Health Care Administrators are required to play a dynamic role to face this challenge. St. John's Medical College, Hospital and the Institute of Allied Health Sciences were founded to respond to such a challenge and to meet the primary health needs of our people.

## 1.6 CAMPUS AND INFRASTRUCTURE

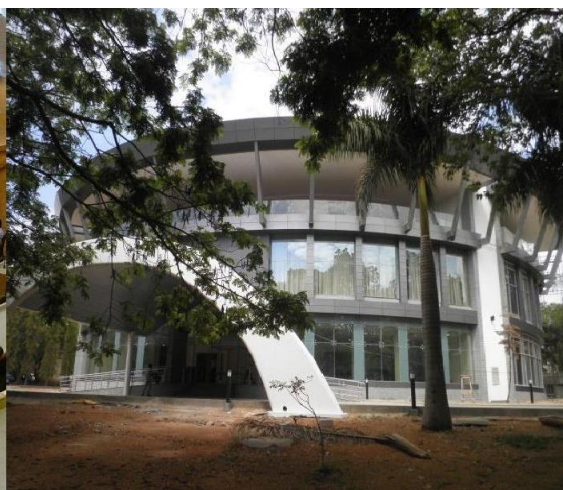
In June 1968, five years after its establishment, the College moved to its permanent 140 acre campus situated at the periphery of the city of Bangalore. It has steadily grown over the years.

St. John's National Academy of Health Sciences consists of the following institutions:

1. **St. John's Medical College** (1964)
2. **St. John's Medical College Hospital** (1975)
3. **St. John's College of Nursing** (1980)
4. **St. John's Institute of Allied Health Sciences** (1975)
5. **St. John's Research Institute** (2004)



Pope Paul IV Auditorium, SJRI



St. John's Main Auditorium

### 1.6.1 ST. JOHN'S MEDICAL COLLEGE

St. John's Medical College has been **consistently ranked among the top ten BEST MEDICAL COLLEGES IN INDIA since 2014**. The Institution has seven Rhodes Scholars to date, the maximum from any medical college in India.

The St. John's Medical College building consists of the Academic Block set in a 140 acre green and Wi-Fi enabled campus. The academic block has over 10 lecture halls equipped with audio-visual facilities and seating capacity from 30 to 350 examination halls which can seat 800. and state of the art student laboratories. Dispersed throughout the campus are 4 Auditoria with a maximum seating capacity of 1000.

Several of the departments have museums which complement the laboratories. A new skills laboratory complements the hospital to enhance clinical skills in an non stressful atmosphere



Anatomy museum

### 1.6.2 ZABLOCKI LEARNING CENTRE - Central Medical Library

The library is the focal point in any educational institution. It subscribes to over 135 journals and stocks over 42,000 textbooks. It also is a repository for dissertations. It has a digital section with over 30 computers and Internet Access. The digital section can be accessed remotely by all students and faculty, including Ithenticate Plagiarism Software. There are audiovisual materials also available. The newly refurbished 'Mallaikal Learning Center' provides a conducive atmosphere for studying including in groups. The library continuously strives to develop a comprehensive collection of print and digital resources useful for teaching and research.



Zablocki Learning Centre (Central Library)



### 1.6.3 ST. JOHN'S MEDICAL COLLEGE HOSPITAL

St. John's Medical College Hospital which started with a few hundred beds in 1975, currently has 1800 in-patient beds, distributed among 40 broad speciality and super speciality departments. It has over 100 critical care beds and a burns unit. It is supported by a 24 hour state of the art NABL accredited laboratory and radio-diagnostic services including nuclear medicine. It also has a physiotherapy department to facilitate rehabilitation. The state of the art transfusion medicine unit takes care of the blood and products needs of all the clinical departments. Several departments run speciality clinics like adolescent medicine, sleep, genetics, tobacco cessation clinic etc. The Unit of Hope is a unique multidisciplinary unit for the holistic care of children with disability.



**St. John's Medical College Hospital**



**Well-equipped and well-staffed operation theatre complex and imaging facilities**

---

### 1.6.4 INNOVATIVE TEACHING – LEARNING AT ST.JOHN’S

St. John’s Medical College was probably the first medical school in the country to teach ethics to its medical graduates. With expert faculty from various departments and backgrounds, the Department of Medical Ethics ensures that medical students and residents get a broad based, yet in-depth understanding of how to handle ethical dilemmas in patient care at a medical practice.

In the 80’s our faculty joined together to try new ways of teaching, help develop faculty development and to fulfill our training objectives. In 1988 they came together as a ‘Medical Education Unit’. The unit’s activities were soon recognised by the MCI (now NMC) and St. John’s Medical College was made a one of the ten national nodal centers for medical education. The primary goal of the Department of Medical Education is to promote innovation and advances in medical education. Including medical education research. St John’s students have several innovative learning and assessment methods like problem based learning, skill-based learning and objective structured practical examinations.

St. John’s Alumni Skills Lab is a state-of-the-art training and research facility to help train our students in clinical skills in a non-threatening atmosphere.



**SIM - Man3 simulator for hands on training**

St. John’s was the first to start a Division for Humanities and Health recognising its importance in the formation of a humane doctor, by providing avenues to educate our students on the links between the humanities and the practice of medicine. By stimulating dialogue between society and health practitioners by means of debate, drama, art, music and reflective writing, it aims to realize the ideal of “person-centered” care. The division houses the Major General SL Bhatia Museum of the History of Medicine which provides unique global, historical and evolutionary perspectives to our students enabling them to evolve into more humane practitioners of medicine. "

The Department of Community Health runs innovative programs like Rural Orientation Programme (ROP) and Community Health Action Programme (CHAP) which help to sensitise our students to the social determinants of health and the challenges that our rural population and urban underprivileged face. These uniquely curated, community-based educational programs give our students an immersive learning experience which prepares them for their rural obligation service and subsequent practice of medicine



**Rural Orientation Programme for the 1<sup>st</sup> MBBS Students at the Institution's Community Health Training Centre at Mugulur**



**Interns posting in rural health care centres for 2 months**



### 1.6.5 RESEARCH AT ST.JOHN'S

St. John's fosters a spirit of enquiry and research which is vital to improve the health of our community. St. John's Research Institute (SJRI), an integral part of St. John's National Academy of Health Sciences was the first stand alone research institute on a medical campus in the country. It was conceptualized in the year 1998 and moved into the present facility in the year 2004. SJRI was set up with a commitment to pursue excellence in research and to build capacities in health-related research. The institute conducts training, provides laboratory facilities and supports the running of grants. The institute is the only institute in the country recognised by IAEA for research using stable isotopes. The institute runs collaborative programs with several prestigious international universities including Harvard, McMaster and University of California.

The St. John's Health Innovation Foundation was created with the aim to bring together talent from different disciplines such as engineering, electronics, computer science, biotechnology, data analytics and other domains to collaborate and work with doctors and health professionals to find innovative solutions in healthcare.

St. John's Research Society was created to build research capacity amongst our faculty and students. It provides small grants to young researchers, facilitates a students' research mentoring program and also publishes the SJMC journal. In addition the Research Society also conducts Certificate Courses on Research Methodology for students.

The Institution also has a Research Mentorship program where faculty guides mentor students in research.



**St. John's Research Institute**



**Major General S.L. Bhatia Museum of the History of Medicine**

## 1.7 STUDENT LIFE ON THE CAMPUS OF ST. JOHN'S MEDICAL COLLEGE

Student life at St. John's Medical College is more than just academics and curriculum. The campus offers an array of intellectual, cultural, sports and recreational opportunities. The College boasts of basketball and volleyball courts, football and hockey fields, tennis courts, cricket grounds and a 400m athletic track. There is a gymnasium, badminton court, and facilities for indoor games like table tennis, chess and caroms. Our students have won laurels at the university, state and even international level. The Alumni conduct an annual hockey tournament 'The Issac Memorial Hockey tournament which is an important event in the sports calendar of the city.



**Annual Inter Class Sports**



**Student cultural activities**



**Autumn Muse, the Annual College Fest**



Our campus has a vibrant cultural life . Student-led initiatives like "Spotlight"- the theatre group; "Ecologics"- the enviromental group and "The Quillosophical Society"-the literary group" add to the all-round development of students on this campus. Besides the annual inter-class cultural and sports events, our students organise Jingle Rock- the Annual Christmas program, host Autumn Muse- the Annual College Cultural Fest organised since 1989 and Innervate- a unique medical fest with student workshops, research paper and poster presentations and model World Health Organization, attended by students from medical colleges across the country.-



**Jingle Rock, the campus Christmas Fest**

St John's promotes the all-round psychospiritual and emotional wellbeing of its students. It has in place several mechanisms for spiritual nurture. Chapels, both in the college, hospital and research institute, reflect the centrality of worship in the life of the community. There are daily Eucharistic services in the chapels. An annual spiritual retreat is conducted for all students. There is a Student Prayer Group which meets every Friday for a dedicated time of prayer and reflection. A chaplaincy service is also provided headed by the Chaplain and Asst Chaplain. A qualified and experienced Student Counsellor is available on campus. The Vice Deans of the various sections (Undergraduate, Postgraduate, Allied Health Sciences, Outreach and Distance Education), course co-ordinators and the hostel wardens add yet another layer of mentorship and emotional support for student. Students have access to the best of health-care and medical facilities on campus. All students are eligible for concessional medical care from St. John's Medical College Hospital.



**Assisi Block**



**Alphonsa Block**



**Cafeteria**

The College provides hostel accommodation subject to availability for all students. Each hostel has an assistant warden and 24/7 security cover. Besides the hostel mess, the campus has two cafeterias. There are shops within the campus which includes a mini-supermart that sells confectioneries, fruits, stationery, toiletries etc. Banking, ATM and postal services are also available on campus

---

## 1.8 CAMPUS DISCIPLINE

### **Punctuality, Academic Attendance & Professionalism**

1. Students are expected to be **regular and punctual** at lectures, demonstrations, seminars, practical classes, field work and other such academic exercises.
2. They are required to maintain **adequate attendance** as mandated by the University in each of the prescribed subjects.
3. In case of non-attendance at classes, an application must be presented to the Dean for leave of absence, stating the reason.
4. Students whose conduct or attendance or progress is not satisfactory, will not be allowed to appear for the University Examination and may become liable for suspension/expulsion from the College and / or hostel. Avoiding disturbance to faculty and other students

### **Dress Code**

Students of the college are expected to dress in a manner which projects professionalism. The dress code emphasises the need for students to focus on academics and express their individuality through personality and academic achievements, rather than outward appearance.

1. Aprons and identity badges are mandatory while in the campus.
2. The clothing worn should be formal, well fitting, neat, clean and modest, covering the shoulders, with no deep necklines, and adequate hemlines. Shorts are not permitted in public spaces including dietary, mess, canteen, library. Students need to maintain a professional appearance whenever they are on campus.
3. Hair should be clean, and properly groomed. Long hair should be tied/ braided in case of women students. Male students are expected to maintain short hair with no ponytails/ rubber bands. Hair styles/ colours should not disrupt/ distract from the academic process.
4. Tattoos and body piercing (except standard ear piercing for women students) are strongly discouraged.
5. Footwear should be formal. For men closed shoes or sandals and not sneakers

### **Involvement in Associations on Campus And Outside**

1. Membership of the recognised Students' Association of the College is compulsory. No other association of students in the College will be permitted, without the prior approval of the Dean.
2. Those who are required by the rules of the University to do so, must join the NCC or NSC or the Physical training Classes.
3. Catholic students are encouraged to join the All India Catholic Medical Guild of St. Luke (CMG), Bangalore, and the All India Catholic University Federation (AICUF).



**Policy on Alcohol, Drugs and Smoking.**

1. Smoking is not permitted on the campus.
2. Students are not permitted to serve or consume alcohol within the campuses of SJNAHS and is grounds for severe disciplinary action.
3. Possession or use of banned drugs is strictly prohibited. The Indian Penal Code classifies obtaining, keeping or passing on banned drugs (such as marijuana, cocaine, heroin, etc) as a criminal offence. Possession or use of banned drugs will result in expulsion from the College.

**Involvement in Strikes and Criminal Acts**

1. It is illegal to be involved in strikes within the Organization. Students should refrain from disfiguring walls and furniture and from other objectionable practices. Students involved in such activities may be liable for expulsion from the Institution and must also pay for the damages.
2. Any other activities which are likely to affect the peace and tranquillity of the institution, involvement in any sort of violence or disturbance both within and outside the institution/any criminal acts/offences as defined in the Indian Penal Code will result in expulsion from the College.

**Other General Guidelines**

1. Immoral activity including use of foul language, gestures or any form of abuse would be liable for severe disciplinary action.
2. 'Wi-Fi' provided in classrooms and hostels is solely for academic purposes. Any form of its inappropriate use is not allowed.
3. The course shall be pursued on full time basis. No candidate shall be permitted to work in a health care facility or a related organization or laboratory or any other organizations outside the Institution or engage in any business while studying the course.
4. No candidate shall join any other course of study or appear for any other examination conducted by this University or any other university in India or abroad during the period of study, without prior permission from the Dean.
5. It is mandatory for hostelites to be members of the students mess. The hostels and dietary are out of bounds for the day scholars.
6. The college vehicles are not available for excursions, examinations and external postings.
7. The College Office must be kept posted regarding change of address if any, whether local or permanent and contact numbers.

**Please note that the regulations included in this section are not exhaustive. Students are expected to comply with any disciplinary guidelines which may be issued towards the smooth running of the institution and the academic process.**

### Use of ID Cards and Dress Code

ID Card given to you must be worn while you are in the campus-college, hospital, canteen, mess, library or playground. Students not wearing the ID card will be penalized. Your Dress Code should be formal. During Practicals and Clinicals it is mandatory that you wear your apron (Lab Coat).

### Student Counselor

Mrs. Sangetha Deenanath  
(O) 49469119, (Mob) 9591990404

Student Counselor is available to meet students on all the days of the week with prior appointment.

**Location :** Room No. 213, First Floor, Robert Koch Bhavan, SJMC

### Mentorship Programme

This Programme will help you to be under the care of a Faculty mentor for academic and non-academic matters. Feel free to share your problems and concerns with your mentor.

### Internal Committee (IC)

The CBCI Society for Medical Education's Policy on prevention of sexual harassment at work place states: "CBCI is committed to provide a work environment that ensures every employee is treated with dignity and respect, and afforded equitable treatment. The society will not tolerate any form of sexual harassment and is committed to take all necessary steps to ensure that its employees are not subjected to any form of harassment' (Section 1).

### Names and Contact Numbers of IC.

- |  |            |
|--|------------|
| 1. Dr. Vijaya Raman<br>Presiding Officer       | 9945561660 |
| 2. Dr. Jyothi M. Idiculla<br>Member            | 9845087190 |
| 3. Mrs. Martha Jayashree<br>Member             | 9886499784 |
| 4. Dr. P. S. Varghese<br>Member                | 9886072336 |
| 5. Dr. Arvind Kasthuri<br>Member               | 9880902992 |
| 6. Dr. Prem Kumar Mony<br>Member               | 9535007638 |
| 7. Dr. S. Nirmala<br>Member                    | 9845572686 |
| 8. Dr. Arun George<br>Member                   | 9342569077 |
| 9. Dr. Priya Pais<br>Member                    | 9008557676 |
| 10. Mrs. Shiny Mathew<br>Member                | 9916892270 |
| 11. Dr. K. Reddemma<br>External Member         | 9886068164 |
| 12. Mrs. Jacqueline D'Souza<br>External Member | 9448211608 |



## ST. JOHN'S MEDICAL COLLEGE

Dear Freshers,

### Hearty Welcome to St. John's!

St. John's Medical College is a unit of the St. John's National Academy of Health Sciences, Bangalore, established in 1988 by the Catholic Bishops' Conference of India (CBCI). The mission of the Academy is to train competent and compassionate healthcare professionals committed to serving especially the underserved.

This leaflet contains, among other things, important information about ragging, sexual harassment, helpline numbers, and contact numbers of officials who can be reached in case of ragging and/or sexual harassment.

Wish you a fruitful and enjoyable stay on the Campus.

**Rev. Fr. Jesudoss Rajamanickam**  
Director

01 September 2023



## ANTI-RAGGING POLICY

Ragging is a cognizable offence punishable with imprisonment and/or fine according to Section 116 of the Karnataka Education Act, 1983, and under various Sections of the Indian Penal Code (IPC).

Students involved in ragging will be liable, in addition to criminal prosecution, to rustication, dismissal and expulsion from the College.

“Ragging means causing, inducing, compelling or forcing a student, whether by way of practical joke or otherwise, to do any act which detracts from human dignity or violates his person or exposes him to ridicule or to forbear from doing any lawful act, by intimidating wrongfully restraining, wrongfully confining, or injuring him or by using criminal force to him or by holding out to him any threat of such intimidation, wrongful restraint, wrongful confinement, injury or the use of criminal force”. (Karnataka Education Act, 1983, Section 2 (29)).

### ANTI-RAGGING HELPLINE :

**1800-180-5522**

**E-mail : [helpline@antiragging.net](mailto:helpline@antiragging.net)**

### NAMES AND CONTACT NUMBERS OF ANTI-RAGGING COMMITTEE MEMBERS

1. Rev. Fr. Jesudoss Rajamanickam, Director  
Ph: (O) 26274011 (Mob) 9591990301
2. Rev. Dr. J. Charles Davis  
Associate Director – College  
Ph (O) 49466003 (Mob)9591990305
3. Dr. George A. D'Souza, Dean  
Ph (O) 49466006 (Mob)9449820962

4. Dr. Anuradha Ananthamurthy  
Vice Dean - UG  
Ph (O) 49466009 (Mob) 9845943114
5. Dr. Thomas Mathew, Vice Dean – PG  
Ph (O) 49466010 (Mob) 9880247582
6. Dr. Mary Dias, Vice Dean - AHS  
Ph (O) 49466011 (Mob) 9980525187
7. Dr. Marjorie Correa, Registrar  
Ph (O) 49466002 (Mob)9845407661
8. Dr. Avita Rose Johnson  
Ph (O) 49466100 (Mob) 8095634563
9. Dr. Arvind Kasthuri, Chief of Medical Services  
Ph (O) 22065135 (Mob) 9880902992
10. Mr. John Michael Raj A, Asst. Warden  
Assisi Block (Mob) 9941914771
11. Mr. Shankar Ganesh, Asst. Warden  
Baptist Block (Mob) 8925080987
12. Dr. Sejil T. V., Asst. Warden  
Chavara Block (Mob) 9886377375
13. Dr. Santu Ghosh, Asst. Warden  
Damian Block (Mob) 9941005569
14. Mr. Joshvan D'Souza, Asst. Warden  
Nirmala Block (Mob) 9632217279
15. Mr. Himanth Sunkara, Asst. Warden  
Mercy Hostel (Mob) 7981593999
16. Sr. Clarin D'Souza, Asst. Warden  
Mother Theresa Hostel (Mob) 9402655598
17. Ms. Karishma Chauhan, Asst. Warden  
Mother Theresa Hostel (Mob) 9458997668
18. Sr. Jessie Saldanha, Asst. Warden  
Alphonsa 'A & B' Block, (Mob) 9886846655
19. Sr. Juliana Pereira, Asst. Warden  
Alphonsa 'C' Block, (Mob) 9701434736
20. Sr. Vimal Jose, Asst. Warden  
Little Flower 'A' Block, (Mob) 9745914503
21. Sr. Elizabeth Paul, Asst. Warden  
Little Flower 'B' Block, (Mob) 9846797098
22. Sr. Alphonsa Jyothi, Incharge Annexe 3  
(Mob) 9037950897

23. Dr. Varghese P. S., Faculty Representative  
Ph (O) 49466350 (Mob) 9886072336
24. Dr. Savitha D, Faculty Representative  
(Mob) 9945133055
25. Dr. Ratnamala Choudhury, Parent Representative  
(Mob) 9845251314
26. Dr. Binu T Kurian, Parent Representative  
(Mob) 9945726401
27. Mr. Vincent Shantakumar, General Manager,  
Security & Vigilance (Mob) 9591990322
28. Mr. Raja Rao, Asst. Security Officer  
Ph (O) 22065094 (Mob) 9591990323

### STUDENT DISCIPLINARY COMMITTEE

#### Objectives :

1. To protect the rights of the students.
2. To maintain discipline and a decorum in the campus.
3. To assure a fair hearing of compliant and redressal in case of breach of code of students conduct.

#### Members :

1. Dr. George A. D'Souza, Dean
2. Rev. Dr. J. Charles Davis, Associate Director  
– College
3. Dr. Anuradha Ananthamurthy, Vice Dean – UG
4. Dr. Thomas Mathew, Vice Dean – PG
5. Dr. Mary Dias, Vice Dean – AHS
6. Faculty representative – Dr. Govindaraj Sridhar
7. Student Representatives – Mr. Akshay Ajoy &  
Dr. Vivek Peter Goswami

**For assistance email : [dean.sjmc@stjohns.in](mailto:dean.sjmc@stjohns.in)**

### SUBSTANCE ABUSE POLICY

Substance abuse by students is strictly prohibited. If a student is found in possession of alcohol/narcotic drugs, he/she will be debarred from the Campus. St. John's Medical College observes zero tolerance towards substance abuse.





## 2. DEGREE OF BACHELOR OF MEDICINE AND BACHELOR OF SURGERY (MBBS)

### 2.1 PROCEDURE FOR APPLICATION, COUNSELLING AND ADMISSION FOR THE MBBS COURSE AT ST. JOHN'S MEDICAL COLLEGE, BENGALURU: ACADEMIC YEAR 2023-2024

#### 2.1.1 GENERAL INFORMATION

1. St. John's Medical College is a not-for-a profit, Minority Institution belonging to the Roman Catholic Church in India established to train healthcare personnel committed to serve with integrity and compassion, especially the medically underserved in India.
2. St. John's Medical College (SJMC) is affiliated to the Rajiv Gandhi University of Health Sciences, Karnataka (RGUHS) and recognised by the National Medical Commission (NMC).
3. **As per the Government of India policy, counselling for admission to the MBBS Course in St. John's Medical College for the academic year 2023-2024 will be conducted by the Karnataka Examination Authority (KEA). For information on registration, verification of documents and other counselling formalities, kindly refer to the KEA website (<http://kea.kar.nic.in>).**
4. In keeping with the mission of the Institution to train healthcare personnel to serve in the medically underserved areas of the Country, all MBBS candidates to SJMC are required, as a precondition for admission, to execute a **social obligation service bond to serve for two years in one of the designated hospitals or health centres in a medically underserved area of the country**. Those who fail to fulfil the social obligation service commitment will have to pay **the penalty stipulated by the Governing Board**.
5. Admissions to St. John's Medical College are subject to the regulations and statutory enactments of the University, the National Medical Commission (NMC), and the Central and the State Governments.

#### 2.1.2 ELIGIBILITY CRITERIA FOR MBBS ADMISSIONS

1. Candidate must have completed 17 years of age on or before 31 December of the year of admission to the MBBS Course.
2. Candidate must have passed in the subjects of Physics, Chemistry, Biology/Biotechnology and English individually and must have obtained **a minimum of 50% marks in Physics, Chemistry and Biology taken together**, at the final examination of the Pre-University Course or its equivalent. In respect to candidates belonging to **Scheduled Castes, Scheduled Tribes or Other Backward Classes** the minimum marks obtained in Physics, Chemistry and Biology/Bio-technology, taken together, in the qualifying examination shall be **40% instead of 50%**.
3. Candidate must have appeared in the National Eligibility-cum-Entrance Test UG – 2023 (NEET UG - 2023) and qualified for admission to the MBBS course as per the criteria laid down by the Government of India.
4. Candidate must be an Indian Citizen with Indian domicile (resident of India for at least 7 years preceding application). There is no NRI quota in St. John's Medical College
5. If any of the certificates or information provided at the time of admission is subsequently found to be false, the allotted seat is liable to be cancelled and the candidate will have to pay up the entire course fee and bond penalty.

**213 ST. JOHN'S MEDICAL COLLEGE: MBBS SEAT MATRIX**

	<b>Category</b>	<b>Number of seats</b>
1.	All India General Open Merit	10
2.	Institutional Staff Quota (Karnataka)	10
3.	Roman Catholic Christian Religious Sisters (Nuns)	20
4.	Roman Catholic Christian Tribals	10
5.	Roman Catholic Christians of Scheduled Caste Origin	10
6.	Native (Local) North Indian Roman Catholic Christians	10
7.	Roman Catholic Christians of Karnataka State	10
8.	Roman Catholic Christians All India Open Merit	60
9.	Karnataka State Open Merit	10
	<b>Total</b>	<b>150</b>

**214 ST. JOHN'S MBBS SEAT MATRIX CATEGORIES - DEFINITIONS**

**Category 1: All India General Open Merit**, includes all Indian Nationals irrespective of gender, religion, caste, community, region or any such affiliations.

**Category 2: Institutional Staff Quota (Karnataka)** includes children of currently employed permanent staff of St. John's National Academy of Health Sciences who have served the Institution for ten continuous years or more.

**Category 3: Roman Catholic Christian Religious Sisters (Nuns)** includes Religious Sisters (nuns) who are members of Religious Congregations in India recognized by the Roman Catholic Church.

**Category 4: Roman Catholic Christian Tribals** includes Roman Catholic Christians who are members of recognized Tribal Communities.

**Category 5: Roman Catholic Christians of Scheduled Caste Origin** includes Roman Catholic Christians belonging to communities of Scheduled Caste origin.

**Category 6: Native (Local) North Indian Roman Catholic Christians** includes all Roman Catholic Christians who are neither Tribal (Category 4) nor of Schedule Caste origin (Category 5) and who are NOT members of the states of Maharashtra, Gujarat, Goa and South Indian States of Kerala, Tamil Nadu, Karnataka, Andhra Pradesh, Telangana and Puducherry and who are NOT migrants or descendants of migrants to North India from the afore-mentioned States.

**Category 7: Roman Catholic Christians of Karnataka State** includes all Roman Catholic Christians who have domicile in the State of Karnataka as per the KEA criteria.

**Category 8: Roman Catholic Christians All India Open Merit** includes all Roman Catholic Christians of India who do not come under the reserved categories 2, 3, 4, 5, 6, 7, 9.

**Category 9: Karnataka State Open Merit** includes all candidates irrespective of gender, religion, caste, community, region who have domicile in the State of Karnataka as per KEA criteria.

**(Note: If any seat falls vacant in any of the Reserved Categories, it will be allocated to Category 8 – Roman Catholic Christians - All India Open Merit).**

## 2.15 COMMON COUNSELLING BY KARNATAKA EXAMINATION AUTHORITY(KEA)

Counselling for selection of MBBS students to St John's Medical College for the academic year 2023-2024 will, as directed by NMC, be conducted by the Karnataka Examination Authority(KEA). NEET-UG 2023 qualified candidates who wish to apply for MBBS admission to St John's Medical College should, therefore, **register with the Karnataka Examination Authority as per the KEA Schedule. For detailed information on KEA notifications and information, please visit KEA website (<http://kea.kar.nic.in>) regularly.**

## 2.16 ADDITIONAL ORIGINAL DOCUMENTS TO BE PRODUCED BY APPLICANTS TO ST. JOHN'S MEDICAL COLLEGE FOR THE KEA DOCUMENT VERIFICATION

Applicants to St. John's Medical College, Bengaluru must submit the following original documents in the prescribed format at the time of KEA document verification. These are in addition to the documents required by the KEA. For templates of the additional documents required for admission to St. John's Medical College, please refer **Section 2.1.7**.

1. **All Applicants: Category 1 to 9**
  - a. Affidavit undertaking that they will execute a social obligation service bond to serve for two years in one of the designated hospitals or health centres in a medically underserved area of the Country after graduation (**see Certificate format 1a in Section 2.1.7**).
  - b. Supporting document/s to prove residence in India for a period of at least 7 years prior to application for the MBBS course in the form of a study certificate issued by School/s in India stating that the candidate has studied for **7 continuous years including Standard XI and XII (see Certificate Template 1b in section 2.1.7)**.
2. **Category Two: Institutional Staff Quota (Karnataka)**
  - a. Eligibility Certificate from Director of St. John's National Academy of Health Sciences.
3. **Category Three: Roman Catholic Christian Religious Sisters (Nuns)**
  - a. Certificate in prescribed format from the Superior General/ Provincial of the applicant stating that the applicant is a bona fide Professed Religious (Nun) (**see Certificate Template 2 in Section 2.1.7**).
4. **Category Four: Roman Catholic Christian Tribals**
  - a. Baptism Certificate attested by the Bishop of the applicant
  - b. Certificate in prescribed format from the Bishop of the applicant stating that the applicant is a Roman Catholic Christian belonging to a Tribal Community in his Diocese (**see Certificate Template 3 in Section 2.1.7**).
5. **Category Five: Roman Catholic Christians of Scheduled Caste Origin**
  - a. Baptism Certificate attested by the Bishop of the applicant
  - b. Certificate in prescribed format from the Bishop of the applicant stating that the applicant is a member of the Roman Catholic Christian community of Scheduled Caste origin belonging to his Diocese (**see Certificate Template 4 in Section 2.1.7**).
6. **Category Six: Native (Local) North Indian Roman Catholic Christians**
  - a. Baptism Certificate attested by the Bishop of the applicant
  - b. Certificate from the Bishop of the applicant stating that the applicant is a Native (Local) North Indian Roman Catholic Christian belonging to his diocese (**see Certificate Template 5 in Section 2.1.7**).

- 
7. **Category Seven: Roman Catholic Christians of Karnataka State**
    - a. Baptism Certificate attested by the Bishop of the applicant
    - b. Certificate from the Bishop of the applicant stating that the applicant is a bonafide Catholic belonging to his diocese in Karnataka State (**see Certificate Template 6 in Section 2.1.7**).
    - c. Karnataka State Domicile Certificate as prescribed by Karnataka Examination Authority (KEA).
  8. **Category Eight: Roman Catholic Christians - All India Open Merit**
    - a. Baptism Certificate attested by the Bishop of the applicant
    - b. Certificate from the Bishop of the applicant stating that the applicant is a bonafide Catholic belonging to his diocese (**see Certificate Template 7 in Section 2.1.7**).
  9. **Category Nine: Karnataka Open Merit**
    - a. Karnataka State Domicile Certificate as prescribed by Karnataka Examination Authority (KEA).



**21.7 TEMPLATES OF ADDITIONAL CERTIFICATES REQUIRED FOR ADMISSION UNDER THE ST. JOHN'S MEDICAL COLLEGE SEAT MATRIX CATEGORIES**

**Template 1a for all Applicants to St. John's: Format of Affidavit undertaking to execute a bond to serve in medically underserved areas in the Country for two years after graduation.**

**To be submitted on Rs. 100/- stamp paper at the time of KEA Document Verification**

**UNDERTAKING TO EXECUTE BOND TO DO SERVICE IN MEDICALLY UNDERSERVED AREAS**

I (*Name of Candidate*) son/daughter of (*Name of Father/Mother/Guardian*)

AND

(*Name of Father/Mother/Guardian*) parent of (*Name of Candidate*) residing at

(*Permanent Address*), hereby declare as follows:

1. We understand that St. John's Medical College has a policy that requires its MBBS graduates, after completion of the course, to serve in one of its designated hospitals or health centres in a medically underserved area of the Country for a minimum period of TWO years.  
We understand that the penalty for failure to complete the 2 years social obligation service is Rs.25,00,000/-
2. If (*Name of candidate*) is admitted to St. John's Medical College, we undertake to execute a social obligation service bond to do two years of service in a medically underserved area as per the St. John's Medical College policy.
3. We understand that admission of (*Name of candidate*) to St. John's Medical College will be invalid, if the above-mentioned social obligation service is not executed.

What is stated above is true and correct and further we hereby undertake to act accordingly.

Date	Deponent	Signature of the Candidate
Place	Deponent	Signature of the Parent

**Template 1b for all Applicants to St. John's: Format of Study Certificate to be issued by the Institution/s where the applicant has studied from Standard VI to Standard XII.**

**NAME, FULL POSTAL ADDRESS AND TELEPHONE NUMBER OF THE INSTITUTION**

This is to certify that Mr./Ms. (*name of applicant*), has studied from ..... standard to ..... standard in our Institution from ..... to ..... academic years.

Name and Signature of the Head of the Institution

Institution Seal

---

**Template 2 for Reserved Category 3 Applicants: Format of the Certificate for Roman Catholic Religious Sisters (Nuns)**

To be issued on the Official Letter head of Superior General/Provincial

**ELIGIBILITY CERTIFICATE FOR RELIGIOUS SISTERS**

This is to certify that Sr. *(name of applicant)*, KEA APPLICATION NUMBER *(application number)*, residing at *(applicant's permanent address)* is a bonafide Professed Religious in the *(name of Province)* Province of the Roman Catholic Religious Congregation of *(name of Congregation)* in the State of *(name the State)*.

I further certify that Sr. *(name of applicant)* has been permitted by the Congregation to apply for MBBS admission to St. John's Medical College, Bangalore.

Name, Signature and Seal of the Applicant's Superior General/Provincial with Date

**Template 3 for Reserved Category 4 Applicants: Format of Bishop's Certificate for Roman Catholic Tribal**

To be issued on Bishop's Official Letterhead

**ELIGIBILITY CERTIFICATE FOR TRIBAL CATHOLICS**

This is to certify that Mr./Ms. *(name of the applicant)*, KEA APPLICATION NUMBER *(application number)*, residing at *(applicant's permanent address)* is a bonafide Roman Catholic Christian belonging to the *(name of the parish)* Parish in the Diocese/Archdiocese of *(name of the Diocese)* in the State of *(name of the State)*.

I further certify that Mr./Ms. *(name of applicant)* belongs to a Roman Catholic Christian Tribal community in my Diocese.

Name, Signature and Seal of the Applicant's Bishop with Date

**Template 4 for Reserved Category 5 Applicants: Format of Bishop's Certificate for Roman Catholic Christians of Scheduled Caste Origin**

To be issued on Bishop's Official Letterhead

**ELIGIBILITY CERTIFICATE FOR ROMAN CATHOLIC CHRISTIANS OF SCHEDULED CASTE ORIGIN**

This is to certify that Mr./Ms. (*name of the applicant*), KEA APPLICATION NUMBER (*application number*), residing at (*applicant's permanent address*) is a bonafide Roman Catholic Christian belonging to the (*name of the parish*) Parish in the Diocese/Archdiocese of (*name of the Diocese*) in the State of (*name of the State*).

I further certify that Mr./Ms. (*name of applicant*) is a member of Roman Catholic Christian Community of Scheduled Caste origin in my Diocese.

Name, Signature and Seal of the Applicant's Bishop with Date

**Template 5 for Reserved Category 6 Applicants: Format of Bishop's Certificate for Native (Local) North Indian Roman Catholic Christians**

To be issued on Bishop's Official Letterhead

**ELIGIBILITY CERTIFICATE FOR NATIVE (LOCAL) NORTH INDIAN CATHOLICS**

This is to certify that Mr./Ms. (*name of the applicant*), KEA APPLICATION NUMBER (*application number*), residing at (*applicant's permanent address*) is a bonafide Roman Catholic Christian belonging to the (*name of the parish*) Parish in the Diocese/Archdiocese of (*name of the Diocese*) in the North Indian State of (*name of the State*).

I further certify that Mr./Ms. (*name of applicant*) is a Native North Indian Roman Catholic Christian and that he/she is neither a Tribal nor of scheduled caste origin nor a migrant or a descendant of migrants from Maharashtra, Goa, Gujarat and South Indian states of Kerala, Tamil Nadu, Karnataka, Andhra Pradesh, Telangana and Puducherry

Name, Signature and Seal of the Applicant's Bishop with Date

---

**Template 6 for Reserved Category 7 Applicants: Format of Bishop's Certificate for Roman Catholic Christians of Karnataka State**

To be issued on Bishop's Official Letterhead

**ELIGIBILITY CERTIFICATE FOR ROMAN CATHOLIC CHRISTIAN  
WITH KARNATAKA DOMICILE**

This is to certify that Mr./Ms. *(name of the applicant)*, KEA APPLICATION NUMBER *(application number)*, residing at *(applicant's permanent address)* is a bonafide Roman Catholic Christian belonging to the *(name of the Parish)* Parish in the Diocese/Archdiocese of *(name of the Diocese)* in the State of Karnataka.

Name, Signature and Seal of the Applicant's Bishop with Date

**Template 7 for Reserved Category 8 Applicants: Format of Bishop's Certificate for Roman Catholic Christians-All India open Merit**

To be issued on Bishop's Official Letterhead

**ELIGIBILITY CERTIFICATE FOR ROMAN CATHOLIC CHRISTIANS ALL INDIA  
OPEN MERIT)**

This is to certify that Mr./Ms. *(name of the applicant)*, KEA APPLICATION NUMBER *(application number)*, residing at *(applicant's permanent address)* is a bonafide Roman Catholic Christian belonging to the *(name of the parish)* Parish in the Diocese/Archdiocese of *(name of the Diocese)* in the State of *(name of the State)*.

Name, Signature and Seal of the Applicant's Bishop with Date

## 2.18 FEE FOR THE MBBS COURSE

### 2.1.8.1 FEE CHART – MBBS 2023

1. First year fee to be paid in full to **KEA** at the time of admission.

	Amount in Rs.
Admission fee	32,700/-
Refundable deposits	14,000/-
Annual Tuition fee	6,50,000/-
Other fees	79,685/-
RGUHS fee (University)	12,000/-
<b>Total fee payable to KEA at the time of admission</b>	<b>7,88,385/-</b>

Note: For the mode of payment of the Admission and first year fee please check KEA website. Please DO NOT pay the Admission and first year fee to St. John's Medical College.

2. **The Fee Structure is subject to revision from time to time by the Management and /or as per KEA/RGUHS/Government regulations.**

3. **Payment of fees from the second year onwards:** As per current norms, annual fee for the batch starting from 2023 to be paid to the College from the 2nd year onwards is **Rs.7,29,685**. This annual fee is to be paid in 2 Installments, in January and July.

#### Mode of Fee Payment:

- Payment through Bank Card.
- Demand Draft in favour of St. John's Medical College payable at Bengaluru.
- Online transfer NEFT/RTGS (Details of UTR number to be emailed to [accounts.sjmc@stjohns.in](mailto:accounts.sjmc@stjohns.in))
- (Cash payment will NOT be accepted)

#### Bank Details for Online Transfer

- Account Holder: St. John's Medical College
- Bank Name: Bank of Baroda
- Account Number: 05210200000212
- IFSC Code: BARB0STJOHN (note: fifth digit is Zero)

#### Please note:

1. The Annual Fee does not include Hostel and Mess fees.
2. Late payments will attract a penalty
3. Students with extended academic tenure because of failure will have to pay additional installments over and above the regular installments.
4. Refundable deposits should be claimed within three months of completing the rural bond, failing which the deposits would be forfeited by the students.

---

### 2.1.8.2 Fee Refund Policy on Discontinuation of the course:

Discontinuation of course before course commencement

- Fees paid will be refunded after deduction of 10% as service charge

Discontinuation of course after commencement of course

- Fees for the entire MBBS course will have to be paid along with the penalty for not doing the two year Social Obligation Service.

## 2.2 MBBS - COURSE DETAILS

### 2.2.1 Course Outline:

- The current curriculum for MBBS applicable from the Academic year 2019-20 onwards, is competency based and focuses on the Medical Graduate being competent to perform tasks of a “primary care physician of first contact”, after completion of training. The learner has to take responsibility for their own learning. The MBBS course is of four and a half years duration and is followed by one year of **Compulsory Rotating Residential Internship**.

The broad guidelines of the course are given below:

- The course begins with a **Foundation Course** sensitising the students to the health situation in India, the role of doctors in the community and basic principles of Communication & Ethics.
- The undergraduate course in medicine comprises of three Phases.

**Phase I-** The first stage of 12 months duration (Term 1 and 2) consists of the basic sciences: - Anatomy, Physiology and Biochemistry. This will be followed by **the 1<sup>st</sup> Professional Examination**. Passing in the First Professional Examination is compulsory before proceeding to Phase II training. Supplementary examination will be conducted shortly thereafter so that the students who pass can join the main batch. Those students who fail in the supplementary examination will have to appear in the subsequent year.

**Phase II-** The next stage is of 12 months duration (Term 3 and 4) and comprises of clinical and para- clinical subjects :- Pharmacology, Pathology, Microbiology and Forensic Medicine. This will be followed by the **2<sup>nd</sup> Professional Examination**. A student, who fails in the 2<sup>nd</sup> Professional examination, can proceed with the training but shall not be allowed to appear in the 3<sup>rd</sup> Professional Part I examination unless she/he passes all subjects of 2<sup>nd</sup> Professional examination.

**Phase III-** The penultimate stage is of 12 months duration (Terms 5 and 6) and covers Ophthalmology, ENT and Community Medicine. This will be followed by the **3<sup>rd</sup> Professional Part 1 Examination**. A student, who fails in the 3<sup>rd</sup> Professional examination, can proceed with the training but shall not be allowed to appear in 3<sup>rd</sup> Professional Part 2 examination unless she/he passes all subjects of the 3<sup>rd</sup> Professional Part 1 examination.

**Phase IV-** The last stage is of 12 months duration (Terms 7- 9) and covers General Medicine, Paediatrics, Surgery, Orthopedic Surgery and Obstetrics & Gynaecology. It is to be noted that the students will be attending Clinical postings and lectures in these subjects from 3<sup>rd</sup> term itself. The end of 9<sup>th</sup> term will be followed by the **3<sup>rd</sup> Professional Part 2 Examination**. A Student, who fails in the 3<sup>rd</sup> Professional Part 2 examination cannot proceed to the Internship unless she/he passes all subjects of 3<sup>rd</sup> Professional Part 2 examination.

1. The clinical subjects to be taught during Phase II and III are Medicine and its allied specialties, Surgery and its allied specialties, Obstetrics and Gynaecology and Community Medicine.
2. Besides clinical postings as per schedule mentioned herewith, rest of the teaching hours will consist of didactic lectures, demonstrations, seminars, group discussions, etc. in various subjects.
3. Clinical skills will be taught not only at the bedside of the patients, but also in the well- equippedskills lab, use of simulated patients and paper-based cases.
4. In addition to teaching of the medical subjects mentioned above, Medical Ethics, Professionalism and Communication Skills will also be taught.
5. Research methodology will be taught and students will have ample opportunities to do research under the guidance of a faculty, which is entirely voluntary and student driven.
6. **The internship lasting 12 months** comprises of rotations in Community Health, Medicine, Surgery, Obstetrics & Gynaecology, Paediatrics, Orthopaedics, Emergency Medicine and short electives in various specialties. All these are as per the guidelines of the MCI/NMC

**Note:** The above mentioned course structure may be modified from the MBBS 2022-23 batches onwards. Kindly refer to the NMC/RGUHS websites for clarity.

### 2.2.2. Essentials to be eligible to appear for University examination

- **Course completion:** Satisfactory completion of the approved course of study in the subject/subjects for the prescribed duration.
- **Attendance:** Not less than 75% of the total classes conducted in theory and not less than 80% of the total classes conducted in practicals separately in a given subject to be eligible for the University examination in that subject/subjects.
- **Internal Assessment (IA):** Minimum of 40% marks to be obtained separately in theory and practical to appear for University examination. At least 50% marks of the total combined in theory and practical assigned for IA is to be obtained in a particular subject (The average of ALL internal assessment examinations will be computed in theory and practical separately. The internal assessment will include formative and summative assessment.)

- 
- **Certifiable competencies:** Learners must have completed the required certifiable competencies for that phase of training and completed the logbook appropriate for that phase of training to be eligible for appearing at the final university examination of that subject.

Note: Refer Rajiv Gandhi University of Health Sciences website [www.rguhs.ac.in](http://www.rguhs.ac.in) for further details of the course and exam structure

#### **Checklist at the time of application to KEA**

1. Application form duly filled as per KEA guidelines
2. All candidates -Affidavit undertaking to execute a bond to serve in a medically underserved area for a period of 2 years after graduation (Refer 2.1.7)
3. All candidates- Study certificate to be issued by Institution on Institution letterhead where the candidate has studied, in the prescribed format (Refer 2.1.7)
4. Category-specific eligibility document as specified under 2.1.7 (E.g., Baptism Certificate/ Bishop Certificate/Karnataka State Domicile Certificate etc



---

### 3. MEDICAL POSTGRADUATE DEGREE COURSES

#### 3.1 PROCEDURE FOR APPLICATION, COUNSELLING AND ADMISSION FOR MEDICAL POSTGRADUATE COURSES (MD/MS) AT ST. JOHN'S MEDICAL COLLEGE, BENGALURU, FOR THE ACADEMIC YEAR 2023-2024.

##### 3.1.1 GENERAL INFORMATION

- St. John's Medical College is affiliated to the Rajiv Gandhi University of Health Sciences, Karnataka, and recognized for post-graduate degree courses, with the approval of the National Medical Commission and the Government of Karnataka.
- The courses and the number of seats and the category-wise seat matrix for admission to St. John's Medical College for the academic year 2023-2024 is given in section 3.1.2
- Applications may be submitted for the above-mentioned courses by those who have a recognized Graduate Degree / Post-graduate Medical Diploma and have qualified in PG NEET-2023
- Post-graduate Medical Admissions (MD and MS) to St. John's Medical College, Bengaluru, will be conducted by Karnataka Examination Authority (KEA) through Common Counselling. **Candidates require to apply through KEA.** For dates of application, document verification and other details, please refer to the KEA Website. (<http://kea.kar.nic.in>). For additional documents required for application to St. John's Medical College, please see section 3.1.4.1
- Admission to various courses will be provisional and subject to confirmation of eligibility by the Rajiv Gandhi University of Health Sciences (RGUHS). The decision of the University with regard to eligibility is final.
- For date of commencement of the classes and course curriculum details, including duration of various courses, syllabi etc., please refer to the Rajiv Gandhi University of Health Sciences Website : [www.rguhs.ac.in](http://www.rguhs.ac.in)

**3.1.2 SEAT MATRIX FOR MEDICAL POSTGRADUATE (MD/MS) ADMISSIONS TO ST. JOHN'S MEDICAL COLLEGE FOR THE ACADEMIC YEAR 2023-2024**

<b>DEGREE COURSES(3 YEARS)</b>	<b>CATEGORY 1 Roman Catholic Religious Nuns with SJMC Approved Rural Service*</b>	<b>CATEGORY 2 SJMC Alumni with SJMC approved Rural Service*</b>	<b>CATEGORY 3 Roman Catholic Christians AllIndia Open Merit</b>	<b>CATEGORY 4 General Open Merit</b>	<b>Total No of Seats</b>
M.D. Anaesthesia	-	4	5	5	14
M.D. Anatomy	-	-	-	4	4
M.D. Biochemistry	-	-	1	3	4
M.D. Community Health	-	2	2	4	8
M.D. Dermatology	-	2	2	1	5
M.D. Emergency Medicine	-	1	1	1	3
M.S. ENT	-	1	1	1	3
M.D. Family Medicine	1	1	-	1	3
M.D. Forensic Medicine	-	-	-	1	1
M.D. General Medicine	2	5	5	3	15
M.S. General Surgery	1	2	1	1	5
M.D. Microbiology	-	-	1	3	4
M.S. Obstetrics & Gynaecology	2	2	2	2	8
M.S. Ophthalmology	-	1	1	1	3
M.S. Orthopaedics	-	3	2	1	6
M.D. Paediatrics	2	3	3	1	9
M.D. Pathology	-	2	3	3	8
M.D. Pharmacology	-	-	1	3	4
M.D. Physical Medicine and Rehabilitation	-	1	-	1	2
M.D. Physiology	-	-	-	4	4
M.D. Psychiatry	1	2	1	1	5
M.D. Radiodiagnosis	-	4	4	2	10
M.D. Radiation Oncology	-	1	-	1	2
M.D. Transfusion Medicine & Immuno Haematology	-	-	-	1	1
<b>Total</b>	<b>9</b>	<b>37</b>	<b>36</b>	<b>49</b>	<b>131</b>

### 3.1.2.1 RULES FOR SEAT ALLOCATION

- If any seat allotted to Reserved Category 1 is unclaimed, it will be allotted to Reserved Category 2.
- If any seat allotted to Reserved Category 2 is unclaimed, it will be allotted to Reserved Category 3.
- If any seat allotted to Reserved Category 3 is unclaimed, it will be allotted to Reserved Category 4.

### 3.1.3 ELIGIBILITY CRITERIA FOR ADMISSION FOR MEDICAL POST-GRADUATE COURSES AND SOCIAL OBLIGATION SERVICE DETAILS

- Completion of M.B.B.S Degree / Post graduate Medical Diploma from any University recognised by the National Medical Commission and the Compulsory Rotating Internship of one year on the date specified by KEA.
- Registration with the Indian Medical Council.
- PG-NEET 2023 qualified.

### 3.1.4 APPLICATION PROCESS

- Postgraduate Medical Admissions (MD and MS) to St. John's Medical College, Bengaluru, will be conducted by Karnataka Examination Authority (KEA) through Common Counselling. Candidates must apply through KEA. For dates, documents and other details please refer to the KEA website (<http://kea.kar.nic.in>).
- Candidates applying to St. John's Medical College are required to produce additional documents category-wise, in the prescribed format. (Please refer subsection 3.1.4.1)

#### 3.1.4.1 ADDITIONAL DOCUMENTS REQUIRED FOR ADMISSION TO ST. JOHN'S MEDICAL COLLEGE, BENGALURU AND CERTIFICATE FORMATS

##### **Reserved Category 1 Candidates: (Roman Catholic Religious Sisters (Nuns) with two year rural service in SJMC approved centers)**

1. Certificate of bonafide membership in a Religious Congregation from Superior General/Provincial.  
(See certificate format 1)
2. Certificate of two-year rural service issued by Director SJNAHS.  
(See Certificate format 2)

##### **Reserved Category 2 Candidates: (SJMC Alumini with Rural Service)**

1. Certificate of two-year rural service issued by Director SJNAHS (See Certificate format 2)

##### **Reserved Category 3 Candidates : (Roman Catholic Christians All India Open Merit)**

1. Baptism Certificate from the Candidate's Parish in English Language attested by the Bishop of the candidate's Diocese.
2. Roman Catholic Christian Membership Certificate from the Bishop of the candidate's Diocese in the prescribed format (See Certificate Format 3)

##### **Reserved Category 4 Candidates: (General Open Merit)** No additional documents required

- Please note that certificates which are not in the prescribed format will not be accepted

**CERTIFICATE FORMATS FOR ADDITIONAL CERTIFICATES LISTED ABOVE**

**CERTIFICATE FORMAT 1**

**FOR PG CATEGORY 1 : ROMAN CATHOLIC RELIGIOUS SISTERS (NUNS)**

(To be issued on Official Letter Head of Superior General/Provincial)

**ELIGIBILITY CERTIFICATE FOR RELIGIOUS SISTERS (NUNS)**

This is to certify that Dr. Sr. (*name of applicant*), KEA APPLICATION NUMBER (*application number*), residing at (*applicant's permanent address*) is a bonafide Professed Religious in the (*name of Province*) Province of the Roman Catholic Religious Congregation of (*name of Congregation*) in the Roman Catholic Diocese of (*name the Diocese*) in the State of (*name the State*).

I further certify that Sr. (*name of applicant*) has been permitted by the Province/ Congregation to apply for MD/MS admission to St. John's Medical College, Bengaluru.

Name, Signature and Seal of the Applicant's **Superior General/Provincial**

Date

**CERTIFICATE FORMAT 2**

**FOR PG CATEGORY 1 AND 2 : ST. JOHN'S STUDENTS WITH RURAL SERVICE**

(To be issued on the Official Letter Head of the Director, St. John's National Academy of Health Sciences)

**ELIGIBILITY CERTIFICATE FOR ST. JOHN'S STUDENTS WITH RURAL SERVICE**

Ref. No.

Date:

**CERTIFICATE**

This is to certify that Dr. (*name of the applicant*) MBBS Graduate (*year of admission*) of this Institution has done two years Rural Service as required by the Social Obligation Service executed by him/her at the time of admission to St. John's Medical College.

Dr. (*Name of the Applicant*) is eligible for postgraduate Admissions 2023-24 in St. John's Medical College under Category 1 (*Roman Catholic Religious nuns with SJMC approved Rural Service*) or Category 2 (*SJMC Alumni with SJMC Rural Service*)

**Director, SJNAHS**

**CERTIFICATE FORMAT 3**

**FOR PG CATEGORY 3: ROMAN CATHOLIC CHRISTIANS - ALL INDIA OPEN MERIT**

(To be issued on Bishop's Official Letter Head)

**ELIGIBILITY CERTIFICATE FOR ROMAN CATHOLIC  
CHRISTIANS ALL INDIA OPEN MERIT**

This is to certify that Dr. *(name of the applicant)*, KEA APPLICATION NUMBER *(application number)*, residing at *(applicant's permanent address)* is a bonafide Roman Catholic Christian belonging to the *(name of the Parish)* Parish in the Diocese/Archdiocese of *(name of the Diocese)* in the State of *(name of the State)*.

Name, Signature and Seal of the **Bishop** of the Applicant's Diocese

Date

**3.1.5 CHECK LIST OF DOCUMENTS TO BE SUBMITTED WHILE REPORTING TO THE COLLEGE AT THE TIME OF ADMISSION**

Original copies of the following documents need to be submitted at the time of admission:

1. M.B.B.S. Degree or Provisional Pass Certificate.
2. Statements of marks of all M.B.B.S. Examinations
3. Caste Certificate (if SC/ST/OBC).
4. Compulsory Rotating Internship Certificate.
5. State Medical Council Registration Certificate.
6. Conduct Certificate from the Head of the Institution from where the candidate completed the M.B.B.S. Course.
7. Post-graduate diploma certificate, if any.
8. For former students of this Institution, a certificate of service in rural and underserved areas in this country issued by the Director of SJNAHS in the format given above.
9. NEET (PG) 2023 - Results
10. Transfer certificate (Students from colleges other than St. John's Medical College)
11. Migration certificate and Eligibility certificate (Students from Universities other than RGUHS)
12. Photocopies of certificates showing distinctions, scholarships, honours, medals at MBBS and extracurricular activities at Inter collegiate or State level, if any.
13. Six passport size photographs

**Should a candidate secure admission, all the original certificates should be submitted to the College until the completion of the Course. It is mandatory for all students to register with the Karnataka Medical Council for the duration of their course within 6 months of enrollment.**

### 3.1.6 FEES FOR THE POSTGRADUATE (MD/MS) COURSES

#### 3.1.6.1 FEE CHART

#### MEDICAL POSTGRADUATE COURSES 2023 FEE CHART

Sl. No	Courses	Admission Fee (One time) (Rupees)	Refundable Caution, Lab & Library deposits (Rupees)	Annual Tuition Fee (Rupees)*	College Other fees (Annual)* (Rupees)	RGUHS Fee (One time payment) (Rupees)	Total College & RGUHS Fee (Rupees)
1	MD Anatomy, MD Physiology MD Forensic Med.	23,500	16,000	1,00,000	56,525	15,000	2,11,025
2	MD Biochemistry	23,500	16,000	2,00,000	56,525	15,000	3,11,025
3	MD Microbiology	23,500	16,000	3,00,000	56,525	15,000	4,11,025
4	MD Pharmacology	23,500	16,000	5,00,000	56,525	15,000	6,11,025
5	MD Pathology MD Community Med MD Transf Med. & Immuno. Haemat	23,500	16,000	6,50,000	56,525	15,000	7,61,025
6	MD Gen Medicine MD Paediatrics MD Anaesthesia MD Emergency Med	23,500	16,000	11,00,000	62,525	15,000	12,17,025
7	MD Dermatology MD Radiology, MS OBG, MS Orthopaedics MD Family Medicine MD Psychiatry MD PMR MD Radiation Onco. MS Gen Surgery. MS ENT MS Ophthalmology	23,500	16,000	11,00,000	52,525	15,000	12,07,025

\* The Annual fee can be paid in 2 Installments every 6 months from the second year onwards.

**Note: 1. This table does not include hostel and mess fee.**

**2. The fee structure given above is subject to revision from year to year by the Management and/or as per the KEA/RGUHS/MCI/Govt notifications (on stipend and fee structure) without prior notice. In this case, the changed fee structure will be intimated on the College notice board.**

### 3.1.6.2 Fee to be paid at the time of admission

- The fee amount is indicated in the fee chart 3.1.6.1. The mode of fee payment for admission will be as per KEA guidelines and will be intimated at time of Admission on KEA website. Please check for updates on KEA and SJMC websites.

### 3.1.6.3 Guidelines for fee payment from 2<sup>nd</sup> year onwards:

#### Mode of fee payment:

1. Demand draft drawn in favour of “**St. John’s Medical College, Bengaluru**”
2. Payment through Bank card
3. Online transfer NEFT/RTGS (Details of UTR number to be emailed to [accounts.sjmc@stjohns.in](mailto:accounts.sjmc@stjohns.in))

#### St. John’s Medical College Bank details:

Bank name: Bank of Baroda  
A/c No. 05210200000212  
IFSC code: BARB0STJOHN (Fifth digit is zero)

- Cash payments will not be accepted.
- The students are required to pay the prescribed annual fee at the time of admission for the first year and once in every six months i.e. in the months of July and January, for the subsequent academic years. The entire term fee is to be paid in one installment to the Accounts section, St. John’s Medical College. No part payment will be accepted. The prescribed fee should be paid **within one month of the commencement of each term**. Late payments will attract a penalty of Rs. 50/- per day which will have to be paid along with the fee.
- Examination fee as prescribed by Rajiv Gandhi University of Health Sciences and other fee, if any, will be notified at the time of admission or at the appropriate time.
- All candidates have to pay a caution deposit of Rs.10,000/-, Library deposit of Rs.3,000/- and laboratory deposit of Rs.3,000/- at the time of admission. These amounts will be refunded, after deduction of dues, if any, when the student leaves the Institution on completion of the Course.

### 3.1.6.4 Fee Refund policy on discontinuation of the course

- A student who discontinues the course after admission but before the commencement of the course, will not be entitled to refund of the fee paid and deposits made to the Institution, unless the seat that has fallen vacant due to the discontinuation, is filled up by another candidate. *If the vacated seat is filled up the fee paid will be refunded after deduction of 10% as service charges, but only after the admission fee paid to KEA is transferred to the Institution.*
- If a student discontinues the course during the course period for any reason, he/she will have to refund the entire stipend paid by the Institution upto the time of discontinuation and pay the fee for the remaining period of the course. He/She shall also forfeit all the deposits and other fee paid to the Institution.

**3.1.7 STIPEND**

- Postgraduate students will be paid a stipend of Rs. 45,000/- per month in the first year, Rs.50,000/- in the second year and Rs 55,000/- in the third year, as per current norms.

**3.1.8 SCHOLARSHIP**

A limited number of Scholarships are available for deserving candidates. Details are available with the Academic section, St.John's Medical College, Bengaluru

**3.1.9 DUTIES AND RESPONSIBILITY**

Duties and Responsibilities of the PG students will be determined by the Dean and the RGUHS guidelines issued from time to time. They will be required to perform such work as may be needed in the legitimate interest of patient care, research, teaching etc, as decided by the Dean and the Head of the Department



#### 4. MEDICAL SUPER SPECIALITY COURSES

##### 4.1 PROCEDURE FOR APPLICATION, COUNSELLING AND ADMISSION FOR MEDICAL SUPER SPECIALITY COURSES (DM/M.Ch.) AT ST. JOHN'S MEDICAL COLLEGE, BENGALURU FOR THE ACADEMIC YEAR 2023-2024.

###### 4.1.1 GENERAL INFORMATION

- St. John's Medical College is affiliated to the Rajiv Gandhi University of Health Sciences, Karnataka and recognised for Super Speciality (DM/M.Ch.) courses, with the approval of the Government of Karnataka and National Medical Commission. The courses and the number of seats available in each of these are listed in **section 4.1.2**
- **Admission to various courses will be provisional and is subject to confirmation of eligibility by the Rajiv Gandhi University of Health Sciences (RGUHS). The decision of the University with regard to eligibility is final.**
- The date of commencement of the classes will be notified as per RGUHS guidelines, for course details refer website [www.rguhs.ac.in](http://www.rguhs.ac.in).

###### 4.1.2 SUPER SPECIALITY COURSES (3 YEARS) AND ELIGIBILITY (as per NMC)

Name of the course	No of seats	Prior Requirement- The following degree/s or the equivalent (DNB)
DM Cardiology	1	MD General Medicine / MD Paediatrics/MD Respiratory Medicine
DM Critical Care Medicine	4	MD General Medicine/MD Anaesthesia/ MD Chest Medicine/MD Emergency Medicine
DM Endocrinology	2	MD General Medicine/ MD Pediatrics/MD Respiratory Medicine
DM Gastroenterology	3	MD General Medicine
DM Neonatology	3	MD Paediatrics
DM Nephrology	3	MD General Medicine/ MD Paediatrics
DM Neurology	3	MD General Medicine/ MD Paediatrics
DM Pediatric Nephrology	1	MD Paediatrics/MD General Medicine
DM Pulmonary Medicine	2	MD General Medicine/ MD Paediatrics/ MD Respiratory Medicine
M.Ch. Gynaecologic Oncology	1	MD/MS Gynaecology and Obstetrics
M.Ch. Neurosurgery	3	MS Surgery
M.Ch. Paediatric Surgery	2	MS Surgery
M.Ch. Plastic Surgery	2	MS Surgery
M.Ch. Surgical Oncology	1	MS Surgery/ MS ENT/ MS Orthopaedics/MD Obst. & Gynae.
M.Ch. Urology	1	MS Surgery

### 4.1.3 APPLICATION AND ADMISSION PROCESS

Admissions for all Super Speciality courses will be done, based on central counselling conducted by the Medical Counselling Committee (MCC) of DGHS, Ministry of Health and Family Welfare and Government of India on the basis of NEET Super speciality. Specific details based on the Government directive at the time of admission will be notified on the SJMC website ([www.stjohns.in](http://www.stjohns.in))

### 4.1.4 DOCUMENTS TO BE SUBMITTED AT THE TIME OF ADMISSION

Original copies of the following documents need to be submitted at the time of admission:

1. M.B.B.S. Degree and Post-graduate degree certificates.
2. Statements of marks of all M.B.B.S. and MD/MS Examinations.
3. Caste Certificate (if SC/ST/OBC) from relevant authority.
4. Karnataka Medical Council Registration (Mandatory).
5. Conduct Certificate from the Head of the Institution from where the candidate completed the MD/MS/DNB Course.
6. Copies of certificates showing distinctions, scholarships, honours, medals and extra curricular activities at Inter collegiate / State level.
7. NEET super speciality 2023 – Results sheet and admit card
8. Transfer certificates (Students from colleges other than St. John's Medical College)
9. Migration certificate and Eligibility certificate (Students from Universities other than RGUHS)

**Should a candidate secure admission, all the original certificates will be deposited in the College until the completion of the course.**

### 4.1.5 FEES FOR THE SUPER SPECIALITY COURSES

#### 4.1.5.1 FEE CHART

#### MEDICAL SUPER SPECIALITY COURSES - 2023 FEE CHART

Sl. No	Courses	Admission Fee (Rupees)	Refundable deposits (Rupees)	Annual Tuition fees (Rupees) *	Other fees (Rupees) *	Total College Fee (Rupees)	Total College & RGUHS Fee at admission (Rupees)
1	M.Ch Pediatric Surgery	35,200.00	16,000.00	5,00,000.00	67,805.00	6,19,005.00	6,39,005.00
2	DM Critical Care	35,200.00	16,000.00	9,50,000.00	81,625.00	10,82,825.00	11,02,825.00
3	All other Super Speciality Courses	35,200.00	16,000.00	9,50,000.00	71,625.00	10,72,825.00	10,92,825.00

\* Annual Tuition fee and other fee has to be paid every year in two installments in the second and 3<sup>rd</sup> year

- 
- Note:** 1. The above fee is subject to revision from time to time by the management and / or as per DME / RGUHS / NMC / Government regulations. In this case the changed fee structure will be intimated on the college notice board.
2. This does not include Hostel and Mess fee.

#### **4.1.5.2 Guidelines for fee payment**

- The students are required to pay the prescribed fee for the admission year in the format which will be intimated at time of admission and will be as per regulatory requirements.
- The Annual fee for the 2<sup>nd</sup> and 3<sup>rd</sup> year will be paid in 2 installments term wise (every 6 months)
- The term fee will have to be paid in one installment in St. John's Medical College Accounts section. No part payment will be accepted. The prescribed fee should be paid within one month of the commencement of each term. Late payments will attract a penalty of Rs.50/-per day which will have to be paid along with the term fee.
- The Examination fee as prescribed by the Rajiv Gandhi University of Health Sciences and other fees, if any, will be notified at the time of admission or at the appropriate time.
- All candidates have to pay a caution deposit of Rs.10,000/-. Library deposit of Rs.3,000/-and Lab. Deposit of Rs.3,000/- at the time of admission. This will be refunded after the deduction of dues, if any, when the student leaves the Institution after completing the Course.

#### **4.1.5.3 Fee Refund policy on discontinuation of the course**

- A student who discontinues the course after admission but before the commencement of the course, will not be entitled for refund of the fee paid and deposits made to the Institution **unless the seat that has fallen vacant due to the discontinuation, is filled up by another candidate**. If the vacated seat is filled up, the fee will be refunded. after deduction of Rs.10,000/-.
- If a student discontinues the course during the course period for any reason, he/she will have to refund the entire stipend paid by the Institution up to the time of discontinuing, pay the fee for the remaining period of the course, and shall also forfeit all the deposits and other fees paid to the Institution.

## **4.2 PROCEDURE FOR APPLICATION, COUNSELLING AND ADMISSION FOR MEDICAL SUPER SPECIALITY COURSES (DNB) AT ST. JOHN'S MEDICAL COLLEGE, BENGALURU FOR THE ACADEMIC YEAR 2023-2024**

### **4.2.1. GENERAL INFORMATION**

- St. John's Medical College is recognized by the National Board of Examinations (NBE) for the following 3 year Super Speciality (DNB) courses. The courses and the number of seats available in each of these are listed in **section 4.2.2**

#### 4.2.2. SUPER SPECIALITY COURSES (3 YEARS) AND ELIGIBILITY (as per NBE)

Name of the course	No of Seats	Prior Requirement - The following degree/s or the equivalent (DNB)
DNB-Rheumatology	2	MD/DNB in General Medicine / Pediatrics
DNB-Pediatric Intensive Care	3	MD/DNB Pediatrics
FNB-Pediatric Hemato oncology (2 Years Course)	3	MD/DNB Pediatrics
DNB-Clinical Haematology	2	MD/DNB in General Medicine
FNB-Spine Surgery (2 years Course)	2	MS/DNB Orthopaedics

#### 4.2.3 APPLICATION AND ADMISSION PROCESS

- Admission to the above DNB courses is conducted by MCC/DNBE on the basis of NEET Super speciality as per prescribed guidelines. For further details please refer NBE website <https://nbe.edu.in> or [natboard.edu.in](http://natboard.edu.in)

#### 4.2.4. FEE FOR THE DNB COURSES

- As per NBE Guidelines

#### 4.3 STIPEND

Super-speciality students (Senior Residents) will receive a stipend of Rs.55,000/- per month in the first year, Rs.60,000/- in the second year and Rs.65,000 in the third year.

#### 4.4 HOSTEL

The College provides Hostel Accommodation for the students at additional fees.

#### 4.5 DUTIES AND RESPONSIBILITIES

Duties and responsibilities of the PG students will be determined by the Dean and the RGUHS guidelines from time to time. They will be required to perform such work as maybe needed in the legitimate interest of patient care, research, teaching, etc., as decided by the Dean and the Head of the Department.

## 5. POST DOCTORAL FELLOWSHIP AND CERTIFICATE COURSES

### 5.1 PROCEDURE FOR APPLICATION AND ADMISSIONS FOR POST DOCTORAL FELLOWSHIP COURSES AT ST. JOHN'S MEDICAL COLLEGE, BENGALURU FOR THE ACADEMIC YEAR 2023-24

#### 5.1.1 GENERAL INFORMATION:

St. John's Medical College offers the following Post-doctoral 1 to 2 year fellowship and certificate courses.

Sl. No.	Name of the course	Affiliated to	Eligibility	Course duration In months	Annual intake
	<b>Paediatric Fellowships</b>				
01.	Fellowship in Paediatric Nephrology	RGUHS	MD/DNB Paed/DCH	12	4
02.	Fellowship in Paediatric Intensive Care	RGUHS	MD/DNB Paed/DCH	18	4
03.	Indian Diploma in Pediatric Critical Care Medicine (IDPCCM)	IAP Intensive Care Chapter College of Pediatric Critical Care	MD/DNB Paed /DCH	12	2
04.	IAP Fellowship in Behavioural Developmental & Paediatrics	Indian Academy of Pediatrics-IAP Chapter of Neuro Developmental Pediatrics	MD/DNB Paed/DCH	12	1
	<b>Dermatology</b>				
05.	Fellowship in Dermato-Surgery	RGUHS	MD/DNB Dermat/DVD	12	4
06.	Fellowship in Paediatric Dermatology	RGUHS	MD/DNB Dermat/DVD	12	4
	<b>Psychiatry</b>				
07.	Fellowship in Child Psychiatry	RGUHS	MD/DNB Psych/DPM	12	4
08.	Fellowship in Consultation Liaison Psychiatry	St. John's National Academy of Health Sciences	MD/DNB Psychiatry	12	2
	<b>Orthopaedics</b>				
09.	Fellowship in Sports injury & Arthroscopy	RGUHS	MD/DNB Ortho /D Ortho	18	4



Sl. No.	Name of the course	Affiliated to	Eligibility	Course duration In months	Annual intake
	<b>Critical Care</b>				
10.	Indian Diploma in Critical Care Medicine	Indian Society of Critical Care Medicine	MD/DNB Med/ Anaesth/DA	1 year for Degree 2 years for Diploma	2
11	Indian Fellowship in Critical Care Medicine	Indian Society of Critical Care Medicine	MD/DNB Med/ Anaesth	12	2
	<b>Pathology</b>				
12.	Fellowship in Paediatric Pathology	Organisation of Indian College of Pathologists	MD/DNB Pathology	12	1
13.	Fellowship in Dermato Pathology	RGUHS	MD/DNB Pathology/Dermatology	12	2
	<b>Family Medicine</b>				
14.	Fellowship in Family Medicine (FFM) – Distance Education	St. John's National Academy of Health Sciences	MBBS after completion of Internship	12	30
	<b>Cardiology</b>				
15.	Post Doctoral Course in Clinical Cardiology & Echocardiography	St. John's National Academy of Health Sciences	MD/DNB Medicine	12	4
16.	Certificate course in Clinical Cardiology	St. John's National Academy of Health Sciences	MBBS	24	4
	<b>Emergency Medicine</b>				
17.	Certificate course in Emergency Medicine	St. John's National Academy of Health Sciences	MBBS	12	2
	<b>Radiology</b>				
18.	Fellowship in Interventional Radiology	St. John's National Academy of Health Sciences	MD/DNB Radiology	18	2
	<b>Pulmonary Medicine</b>				
19.	Fellowship in Sleep Medicine	RGUHS	MD/DNB Medicine/Chest Medicine	12	2

Sl. No	Name of the course	Affiliated to	Eligibility	Course duration In months	Annual intake
	<b>Neurology</b>				
20.	Fellowship in Multiple Sclerosis & Neuroimmunology	St. John's National Academy of Health Sciences	DM/DNB Neurology	12	2
	<b>Neurosurgery</b>				
21.	Fellowship in Minimally Invasive Neurosurgery	St. John's National Academy of Health Sciences	M.ch/DNB Neurosurgery	12	2

### 5.1.2 APPLICATION PROCESS

- The postdoctoral fellowship and certificate courses will be announced on the St. John's website and through RGUHS/the respective National bodies under which the courses are affiliated.
- The admission to the RGUHS affiliated courses will be held in June/July 2023
- Applications for admissions is online. The details of the application process and the link will be provided on the St. Johns website ([www.stjohns.in](http://www.stjohns.in)). For any queries regarding fellowship please email [sjmc.admission@stjohns.in](mailto:sjmc.admission@stjohns.in).

### 5.1.3 DOCUMENTS TO BE SUBMITTED AT THE TIME OF ADMISSION

1. MBBS and PG Degree / Diploma Certificate
2. MBBS and PG marks cards
3. Internship Completion Certificate
4. State Medical Council Registration
5. Conduct Certificates/Testimonials from the previous Institute where the candidate has worked or from the Institute where PG was completed.
6. Proof of work experience

### 5.1.4 STIPEND

- Rs.25,000/- to Rs. 37,000/- (The exact stipend amount varies as per the fellowship course)

### 5.1.5 HOSTEL ACCOMODATION

- Will be provided subject to availability

### 5.1.6 DUTIES AND RESPONSIBILITIES

Duties and responsibilities of the Fellowship course students will be determined by the Dean and the guidelines of University/National body to which the course is affiliated. They will be required to perform such work as may be needed in the legitimate interest of patient care, research, teaching etc., as decided by the Dean and the Head of the Department.

## 6. ALLIED HEALTH SCIENCES

### PROCEDURE FOR APPLICATION, SELECTION AND ADMISSION FOR ALL COURSES

This section carries general information for admission to all the Allied Health Science (AHS) and Health Administration courses. The course specific details are available under the specific sections listed below.

#### SECTION 7 – BACHELOR DEGREE

- B.Sc. and BPT

#### SECTION 8 – POSTGRADUATE DEGREE PROGRAMME (M.Sc. & MPT)

- M.Sc. Medical Laboratory Technology (M.Sc. MLT)
- Master of Physiotherapy (MPT)

#### SECTION 9

- Postgraduate programmes in Hospital Administration (MHA and DHA)

### 6.1 AHS COURSE DETAILS

GRADUATE COURSES				
List of courses available	No. of seats		Course duration	Internship duration
	Regular	Lateral Entry		
<b>I. Bachelor of Physiotherapy</b>	40	4	4 years	6 months
<b>II. B.Sc. Courses</b>			<b>Course duration</b>	
1. B.Sc. Medical Laboratory Technology (MLT)	20	2	4 years (including 1-year internship)	
2. B.Sc. Medical Imaging Technology (MIT)	20	2		
3. B.Sc. Renal Dialysis Technology (RDT)	20	2		
4. B.Sc. Perfusion Technology (PT)	05	-		
5. B.Sc. Anaesthesia & Operation Theatre Technology (AOTT)	20	2		
6. B.Sc. Radiotherapy Technology (RT)	10	1		
7. B.Sc. Emergency & Trauma Care Technology (ETCT)	10	-		

\* B.Sc ETCT Course received permission from University on 21<sup>st</sup> September 2023

POSTGRADUATE COURSES			
List of Courses available			
<b>I. M. Sc. Medical Laboratory Technology (M.Sc. MLT)</b>	<b>No of seats</b>	<b>Course Duration</b>	
• Clinical Biochemistry	10	2 years	
• Microbiology & Immunology	10	2 years	
• Haematology & Blood Transfusion	10	2 years	
<b>II. Master of Physiotherapy</b>	<b>No. of seats</b>	<b>Course duration</b>	
• Musculoskeletal Disorders (MPT-MSK)	3	2 years	
• Cardio-vascular & Pulmonary Sciences (MPT-CVP)	1		
• Paediatrics (MPT-Ped)	2		
• Neurological Sciences (MPT-Neuro)	3		
• Community Physiotherapy (MPT-Comm)	1		
<b>III. Hospital Administration</b>	<b>No. of Seats</b>	<b>Course Duration</b>	<b>Internship</b>
a. Master of Hospital Administration (MHA)	30	2 years	1 month (Integrated)
b. Diploma in Hospital Administration (DHA)	30	11 months	1 month (Mission Hospital Posting)

- All courses except DHA are affiliated to Rajiv Gandhi University of Health Sciences, Bengaluru
- The DHA certificate is issued by St. John's National Academy of Health Sciences, Bengaluru
- Please note that all the Allied Health Science courses are subject to the rules and regulations of the College and Hospital in addition to University Regulations

## 6.2 APPLICATION CALENDAR FOR ALLIED HEALTH SCIENCE COURSES: 2023-24

S.N.	Courses	Events	Date and day
1.	<b>Lateral Entry</b> ( BPT & B.Sc. courses-MLT, MIT, RDT, RT, AOTT)	Application & Prospectus available on website	01/04/2023 -Saturday
		Admissions	15/05/2023 - Monday Onwards
2	BPT	Application & Prospectus available on website	01/04/2023 - Saturday
		Last date for submitting applications	15/05/2023-Monday
		Entrance Exam	06/06/2023 - Tuesday Time: 9-10 a.m.
		Interview	06/06/2023 – Tuesday Time: 10 a.m. onwards
		Announcement of selected candidates -1 <sup>st</sup> list	07/06/2023 – Wednesday
		Admission of selected candidates -1 <sup>st</sup> list	07/06/2023-Wednesday

3	B.Sc. courses (MLT, MIT, RDT, PT, RT, AOTT)	Application & Prospectus available on website	01/04/2023 -Saturday
		Last date for submitting applications	31/05/2023-Wednesday
		Entrance Examination	20/06/2023 – Tuesday Time: 9 -10.00 a.m.
		Announcement of 1 <sup>st</sup> list of candidates for counselling	20/06/2023 – Tuesday Time: 6.00 p.m.
		- Interview cum seat counselling & Admission for 1 <sup>st</sup> list	21/06/2023 - Wednesday Time: 9.00 am to 4.00 pm
		Announcement of 2 <sup>nd</sup> list of candidates for counselling	21/06/2023 - Wednesday Time: 8.00pm
		- Interview cum seat counselling & Admission for 2 <sup>nd</sup> list	22/06/2023 - Thursday Time: 9.00 am to 4.00 pm
4	MHA	Application & Prospectus available on website	01/04/2023 -Saturday
		Admission	01/05/2023- Monday Onwards
5	MPT & M.Sc. MLT	Application & Prospectus available on website	01/04/2023 – Saturday
		Last date for submitting applications	01/07/2023 - Saturday
		Entrance Test for MSc MLT & MPT	11/07/2023 - Tuesday Time: 9-10 a.m.
		Interview	11/07/2023 - Tuesday
		Announcement of Results	12/07/2023 - Wednesday
		Admissions	12/07/2023 - Wednesday
6	DHA	Application availability and submission dates	01/04/2023 – Saturday onwards
		Interview & Admission	28/08/2023 Time: 9.00 am

### 6.3. APPLICATION PROCEDURE FOR ALL AHS COURSES (B.Sc., BPT, Lateral Entry, M.Sc. MLT, MPT, MHA & DHA)

#### 6.3.1 GENERAL INSTRUCTIONS

Application forms for Registration for Allied Health Science courses will be available online ONLY at <http://stjohnsadmissions.in> OR on the Institutional website [www.stjohns.in](http://www.stjohns.in).

#### 6.3.2 APPLICATION FEE (for all courses)

**Application fee once paid is non-refundable under any circumstances.**

- Application fee and application forms for Bachelor of Physiotherapy (BPT) and B.Sc. Courses are separate. Hence candidates applying for both courses need to fill in both forms separately with the separate fee.
- **Lateral entry** to 2<sup>nd</sup> year (post diploma) candidates for all Lateral Entry courses have to fill a separate lateral entry application form.



### Application fee chart

Courses	Application fee in Rupees
All B.Sc. courses (MLT, MIT, RDT, PT, AOTT, RT)	700
Lateral entry for BPT and B.Sc. courses in MLT, MIT, RDT, AOTT RT	700
Bachelor of Physiotherapy (BPT)	1000
M.Sc. MLT (Clinical Biochemistry/Microbiology and Immunology/ Haematology and Blood Transfusion)	1000
Master of Physiotherapy (MPT-MSK/CVP/Ped/Com/Neuro)	1000
Master of Hospital Administration (MHA)	1000
Diploma in Hospital Administration (DHA)	800

### 6.3.3 INSTRUCTIONS FOR FILLING THE ONLINE APPLICATION FORM (for all courses)

- Detailed Instructions with screen capture images are available in the user manual on the website (<https://stjohnsadmissions.in/allied-health-sciences>). Please read the instructions before registering and filling the Online Application Form.

#### Pre-requisites for filling the online application form:

- It is the responsibility of the candidate to read the prospectus and instructions provided on the Institutional website and to ensure completeness of the application forms. Incomplete forms will be rejected.
- A valid E-mail ID and Mobile Number** is mandatory for the submission of the Online Application form. This E-Mail ID and Mobile number should be active till the declaration of results. The Admission section will use the registered E-Mail ID/Mobile number for communication.
- Please Note:** After the final online submission, the particulars mentioned in the online application form will be considered as **Final**. NO further modifications will be allowed & NO correspondence regarding change of details will be entertained. Candidates are hence requested to fill in the online application form with utmost care.

#### Registration process to be done prior to filling the application form:

- For registration, candidates are first required to click the Online Application Link under the Allied Health Sciences tab on the Institution admission website [www.stjohns.in](http://www.stjohns.in) or <http://stjohnsadmissions.in>.
- The registration form will popup.
- Fill up the registration form with the required information.
- Once you submit the above information, USER ID (registered email) and PASSWORD will be sent to your registered Email ID & by SMS to your registered mobile number.

#### Steps for submitting the online application form (in summary)

- Go to the Link and click on the Online Application Form Link under the Allied Health Sciences tab.
- Enter your registered User ID and password.
- Fill the online application form appropriately with accurate information
- Before submitting, check the details for completeness and accuracy.

- 
- Upload a passport size colour photograph. **Specification for photograph:** Recent colour passport-size photograph (**taken after January 2023**), in JPEG/JPG format with good clarity 150\*200 pixels and not exceeding 340 kb.
  - After filling the application form, marks cards of the previous examinations have to be uploaded.  
Graduate course applicants need to upload SSLC, I PUC and II PUC (If completed) marks cards.  
Post graduate course applicants need to upload Bachelor course marks card of all years of study (1<sup>st</sup>, 2<sup>nd</sup> and 3<sup>rd</sup> year/4<sup>th</sup> year/5<sup>th</sup> year (if completed).
  - Make the ONLINE PAYMENT using any one of the methods provided- credit/debit card or Net Banking or UPI payment. NO OTHER PAYMENT MODE WILL BE ACCEPTED.
  - **Once the transaction has been completed, go back to the application form and review all the filled in details and edit if required. When the application is completed, click confirmed to finish the application process. Only after this step, the application form will be considered for admission.**
  - The applicant can now download the application form and the payment receipt. The student will also be able to view the application number on the completed form. Please note the application number and use it in case of any correspondence with the admission office.
  - A confirmatory SMS and email will be sent to the applicant at the registered Email ID/ mobile number.
  - After the final submission, the Admissions' Office will check and approve the application form. This may take approximately up to a week. **Only after approval, the Hall ticket/ Admit card will be made available to the candidate.** The candidate is required to email and call the Admissions' office in the event of non-receipt of the hall ticket after 1 week.
  - To print the Hall ticket/Admit card, the candidate is required to login at (www.stjohns.in or http://stjohnsadmissions.in) with the User ID and password. The candidate is required to bring this Hall ticket / Admit card for the entrance exam / interview. The candidate will not be permitted to appear for the entrance exam / interview without the Hall ticket/ Admit card.
  - After approval the candidate will receive an SMS/Email confirmation.

**Note: -**

- a. **Kindly quote User ID (registered email id) and course name OR Application number and course name for any future correspondence with the Admissions' office.**
- b. Applications forms sent by Post or Courier will NOT be accepted.
- c. **Errors arising out of incorrect or improper data entry will be the sole responsibility of the candidate.**
- d. Contact for queries regarding online application form and related issues,  
**080-4946 6030/31 Monday to Friday 9.00 am to 1.00 pm & 2.00 pm to 4.30 pm & Saturday 9.00 am to 1.00 pm.**  
**Email: [sjmc.admission@stjohns.in](mailto:sjmc.admission@stjohns.in)**

#### 6.3.4 SELECTION POLICY FOR ADMISSION

- St. John's National Academy of Health Sciences has a NO CAPITATION FEE policy. The Institution does not accept any donations as a consideration for admission.
- Canvassing in any form including recommendation letters, quoting familiarity with people or use of 'agents' to acquire admission will disqualify a candidate from the application process.
- Any **concealed/wrong information will lead to disqualification** of the candidate at any time. Where false statements in the application are discovered even after admission has been granted, the admission will be cancelled without refunding the fees.

## 6.4 ENTRANCE EXAM & INTERVIEW

### Entrance Exam B. Sc Courses, BPT, M. Sc MLT & MPT Only

- The Entrance Exam is of ONE hour duration. The candidate is required to carry the hall ticket/admit card and original photo identity proof (Aadhar card and / or College identity card) to the exam hall failing which the student will be disqualified from writing the entrance examination. Digital images of hall ticket/admit card, Aadhar card or college identity on mobile phone will not be accepted.
- Mobile phones and other electronic gadgets are not allowed inside the examination hall. Candidates found violating these rules will be disqualified.
- **Mode of Entrance Exam for all courses (B.Sc., BPT, M.Sc. MLT and MPT)-**
  - Paper- based exam with OMR marking. Candidates are required to carry pen, pencil and eraser.
  - **Exam Pattern:-** Multiple choice questions with no negative marking.
    - **Subjects for B.Sc. and BPT courses**  
Physics, Chemistry, Biology and English for regular applicants
    - **Subjects for M.Sc. MLT courses**  
Biochemistry, Microbiology, Pathology and English
    - **Subjects for MPT courses**  
BPT course syllabus and English
  - **Venue for Entrance Exam for all courses (B.Sc., BPT, M. Sc MLT, and MPT)**  
- Examination Hall, 4<sup>th</sup> floor, Golden Jubilee block, St. John's Medical College, SJNAHS, Bengaluru-560034.
  - **Time:** 9.00 am. (Refer to Admission Calendar for date- section 6.2)  
Candidates should be seated at the venue **strictly by 8.30 am** (half an hour prior to the scheduled time of examination) on the day of the examination.

### Interview

#### **Bachelor of Physiotherapy, M. Sc. MLT and MPT**

- Interviews for the above batches will be conducted immediately after the Entrance exam as per the dates on the Admission calendar.
- **Venue for interview:** Dean's Office, Ground Floor, St. John's Medical College
- **Time:** 10.00 a. m

**Date:** Please refer admission calendar for the dates for the respective courses.

- Candidates for all the above courses who have uploaded scanned copies of certificates (including extracurricular activities ) will have to produce all the originals to the Admissions Office for verification.

---

### **MHA and Lateral Entry B.Sc Courses (Post Diploma)**

Selections will be on the basis of Interview and/or performance in the qualifying exam. The candidates will be called for interview in batches on basis of the Preselection assessment of the application form.

### **DHA**

DHA candidates will have only an interview on the scheduled date (on Entrance Test) and proceed immediately for Admission. Candidates attending the interview should come prepared for fee payment. (Refer 6.6 for chart)

### **Interview cum seat counselling**

#### **B.Sc. Courses**

- There will be an interview cum seat counselling the day after the entrance examination. Candidates attending the interview cum seat counselling need to bring all original documents for verification and come prepared for fee payment and admission which will be done immediately as described below.
  - Based on the performance in the entrance exam marks a merit wise list of students for seat counselling (1<sup>st</sup> list) will be announced on the Institution website and on the Notice board in the evening on the day of the entrance examination.
  - The interview cum seat counselling is scheduled on the next day after the entrance examination (Refer section 6.2 for the dates). The allocation of seats is done at the interview cum counselling and the candidate will proceed for Admission immediately. **Fee payment and admission procedures will have to be completed by 4.00 pm on the day of counselling in order to confirm the admission.**
  - All seats not confirmed by 4.00 pm on Day 1 of the counselling will be added to the pool of pending seats and will be available for 2<sup>nd</sup> counselling the next day. The list of candidates for the 2<sup>nd</sup> round of counselling will be announced at 6 p.m on Day 1. The same procedure will be followed for the 2<sup>nd</sup> round counselling. In case of any pending seats 3<sup>rd</sup> round of counselling will be arranged, the details of which will be announced later.

## **6.5 ADMISSION OF STUDENTS**

### **Bachelor of Physiotherapy, B.Sc. Lateral entry, M.Sc. MLT, MHA and MPT**

- Based on the performance in the entrance exam, and/or interview, the candidates will be selected for the course.
- The final list of selected candidates, will be displayed on the website **www.stjohns.in** and on the **main Notice Board of the Medical College. No other communications will be sent to the candidate.**

#### **B.Sc. course**

- Selection and admission of B. Sc. Course students will be completed on the day of counselling as detailed in section 6.4.

---

### Admission

- Selected candidates on the day of Admission will have to report to the Admissions' Office, SJMC and follow the admission protocol.
1. The Admission Procedure at the Institution can be completed only after submission of II PUC/Standard XII marks card.
  2. The Admission at St. John's Medical College is provisional, subject to the candidate's fulfilling the eligibility criteria, as prescribed by the Rajiv Gandhi University of Health Sciences. (Refer Sections 7 to 9).
  3. **Original Documents listed below and a set of photocopies are to be submitted to the Academic Section during admission of all AHS courses**
    - a. SSLC (Std X) Pass Certificate or its equivalent.
    - b. I PUC (Std XI) or its equivalent marks card.
    - c. II PUC (Std XII) or its equivalent marks card.
    - d. Diploma marks card for lateral entry candidates only.
    - e. Letter from the Parish Priest indicating the affiliation of the candidate to the parish (for Catholics only)
    - f. SC/ST/OBC certificate from appropriate authority if relevant
    - g. Medical fitness certificate
    - h. Transfer certificate
    - i. Eligibility certificate from RGUHS (Candidates from Boards other than Karnataka PU Board and lateral entry students)
    - j. Deputation certificate (if the candidate is deputed by an organization)
    - k. B.Sc. MLT marks card and Degree/Graduation certificate (for M.Sc. MLT candidates only)
    - l. Bachelor degree marks card and Degree/Graduation certificate (for MHA candidate only) and Council Registration Certificate for Nursing/BDS/MBBS degree holders.
    - m. Bachelor degree marks cards and internship completion certificate for MPT.
    - n. Diploma/ Bachelor degree marks card/ Graduation certificate for DHA candidates.
    - o. Aadhar card photocopy and 3 recent passport size colour photographs also need to be submitted.

Any additional documents required will be notified at the time of admission.

Please note that the admission granted by the College is provisional until the above documents are submitted and the admission is approved by Rajiv Gandhi University of Health Sciences, Bengaluru.



## 6. 6. FEE CHART FOR AHS COURSES FOR 2023

Sl. No	Courses	Admission Fee (in Rs.)	Refundable Caution, Lab & Library deposits (in Rs.)	Tuition Fee per term (in Rs.)	College Other Fee (in Rs.)	RGUHS Fee (in Rs.)	Total College & RGUHS Fee (in Rs.)	Term Fee to be paid from term II Onwards (in Rs.)
1	<b>B.Sc. MLT</b>	6,250	5,000	12,500	15,425	4,100	<b>43,275</b>	27,925
2	<b>B.Sc. MIT</b>	5,900	5,000	17,500	16,000	4,100	<b>48,500</b>	33,500
3	<b>B.Sc. RDT</b>	5,900	5,000	17,500	15,500	4,100	<b>48,000</b>	33,000
4	<b>B.Sc. PT</b>	5,900	5,000	17,500	15,500	4,100	<b>48,000</b>	33,000
5.	<b>B.Sc. AOTT</b>	5,900	5,000	17,500	15,500	4,100	<b>48,000</b>	33,000
6.	<b>B.Sc. RT</b>	5,900	5,000	17,500	15,500	4,100	<b>48,000</b>	33,000
7	<b>BPT</b>	16,500	7,000	87,500	15,200	5,650	<b>1,31,850</b>	1,02,700
8	<b>M.Sc. MLT*</b>	7,550	7,000	32,500	17,575	7,050	<b>71,675</b>	50,075
9	<b>MHA</b>	9,000	5,000	75,000	22,555	7,050	<b>1,18,605</b>	97,555
10	<b>DHA</b>	70,400	-	-	-	-	-	-
11	<b>MPT- MKS</b>	7,200	7,000	1,75,000	22,105	10,000	<b>2,21,305</b>	1,97,105
12	<b>MPT-CVP, NEURO &amp; PAED</b>	7,200	7,000	1,50,000	22,105	10,000	<b>1,96,305</b>	1,72,105
13	<b>MPT-COM</b>	7,200	7,000	1,25,000	22,105	10,000	<b>1,71,305</b>	1,47,105

\*MPT & M.Sc. MLT students will receive a monthly stipend of Rs.7000/-

Note: The above fee may be subject to revision from time to time by the management and / or as per RGUHS regulation. Any change in fee structure will be intimated on the college notice board. It is the responsibility of the candidate to check the college notice board regularly.

### 6.6.1 GUIDELINES FOR FEE PAYMENT

- Selected candidates are required to pay the fee within the stipulated date at the time of admission, failing which the admission will stand cancelled and the vacant seat will be issued to the next candidate.
- The candidates are required to pay the prescribed term fee at the time of admission for the first term along with the admission fee. Thereafter the fee will have to be paid every six months i.e. in the months of January and July, for the subsequent academic years. Part payment of the term fee will not be entertained. The prescribed fee should be paid within one month of the commencement of each term. Late payment will attract penalty which will have to be paid along with the fee.
- Examination fee as prescribed by Rajiv Gandhi University of Health Sciences and other fee, if any, will be notified at the time of admission or at the appropriate time.

- 
- All candidates have to pay refundable deposits as specified in the fee chart which includes caution deposit, library deposit and laboratory deposit at the time of admission. The same will be refunded, when the student leaves the Institution after completion of the Course.

#### **6.6.2 FEE REFUND POLICY ON DISCONTINUATION OF THE COURSE**

A candidate who discontinues the course after the admission but before the commencement of the course, will not be entitled for refund of the fees and deposits made to the Institution, unless the seat is filled up by another candidate. If the forfeited seat is filled up, the fee will be refunded after deduction of 10% of the total fee payable as service charges.

If a candidate discontinues the course during the course period in order to join another subject elsewhere or for any other reason, he/she will have to refund the entire stipend (if any) paid by the Institution up to the time of discontinuation and further will pay the fee for the remaining period of the course to the Institution, and shall also forfeit all the deposits and other fee paid to the Institution.

---

## 7. ALLIED HEALTH SCIENCES - GRADUATE PROGRAMME

### 7.1 GENERAL INFORMATION AND SCOPE FOR AHS GRADUATE PROGRAMME

Allied Health Sciences (AHS) has evolved rapidly over recent decades in response to the growing need for a healthcare workforce with the capability to deliver specialized health services in a range of settings namely diagnostic, technical, therapeutic and direct patient care. These services are critical to the health care team and the patients they serve.

- The Undergraduate AHS Courses offered by St. John's Medical College (SJMC) are affiliated to Rajiv Gandhi University of Health Sciences (RGUHS), Karnataka, Bengaluru. The students shall abide by the University guidelines and Institutional policies.
- The courses offered are listed in section 6.1
- The application dates are given in section 6.2

### 7.2 ELIGIBILITY CRITERIA FOR ADMISSION

- Admission is open to male and female candidates.
  - Age: Candidate should have completed 17 years of age at the time of admission and not crossed the age of 35 years.
  - **Educational qualification:**
    - **For B.Sc. MLT, MIT, RDT, PT, AOTT & RT courses:**
      - A candidate should have passed the 2-year Pre-University examination conducted by the Pre-University Education Board in the State of Karnataka or any other examination considered as equivalent, by RGUHS and
      - Score not less than 40% of marks in Physics, Chemistry and Biology.
    - **B.Sc. MIT & RT:**
      - Pre-University course from a recognized Board with vocational course in Radiography/Radiology as vocational subject.
    - **BPT Course:**
      - A candidate who has passed the two-year Pre-University examination conducted by Pre-University Education Board of Karnataka State or any other examination Board considered as equivalent by Rajiv Gandhi University of Health Sciences / Association of Indian Universities (AIU) with Physics, Chemistry, Biology and English as subjects
- OR
- Candidates who have completed Pre-University Course with Vocational Physiotherapy and their optional subjects are eligible for admission to BPT course.

#### Lateral entry

**B.Sc. courses (MLT, RDT, MIT, AOTT and RTT)** leads to direct admission of candidates to second year. The candidates should have passed **Diploma Program from the Government Boards and recognized by RGUHS**, fulfilling the conditions specified in the ordinance of Allied Health Science Courses (Refer to RGUHS website for details).

---

The students are eligible to take admission on lateral entry system only in the same subject studied at diploma level.

**BPT course** leads to direct admission of candidates to third year of the course. The candidates should have passed the **3-year Diploma in Physiotherapy with six months of Internship** and studied under a Paramedical Board recognized by RGUHS.

**Note: For Application procedure, entrance exam & interview, selection and admission of students refer to section 6.2 to 6.5**

**7.3 FEE chart, guidelines for fee payment and fee refund policies are given under section 6. 6**

#### **7.4 ACCOMODATION**

- Hostel facility is extended to outstation candidates, but not guaranteed since it is subject to availability.
- It is compulsory for all hostelites to be messing members
- It is mandatory for the candidates to have a local guardian to avail hostel facility. A separate local guardian form will have to be filled in at the time of admission. Continuation of stay in the hostel is dependent on the condition of satisfactory academic progress by the student. In case of continued poor progress or indiscipline the students may be asked to leave the hostel.

#### **7.5 COURSE CURRICULUM**

- Course and duration for the BPT and B. Sc. courses is given in section 6.1. For details of course curriculum, syllabus and examinations, please refer to the RGUHS website at [www.rguhs.ac.in](http://www.rguhs.ac.in)

#### **7.6 COMPULSORY INTERNSHIP: BPT & B.Sc. (MLT, MIT, RDT, PT, AOTT & RT)**

- After the completion of the final year, the students have to undergo Compulsory Internship Training for a period of 6 months for BPT and 1 year for B.Sc. courses for the issue of degree certificate. Stipend will be paid during internship for a period of 1 year. The period of internship may change as per RGUHS regulations.

#### **NOTE:**

1. The internship will start within a week of the announcement of results.
2. Additional posting will be carried out by the student if internship is not started on the stipulated day and the stipend will not be paid during this period. The period of additional posting is at the discretion of the college.
3. Students will not be awarded degree certificate without successfully completing the internship.

---

### 7.7 ATTENDANCE:

- Minimum 80% in main subjects separately for theory, practical, and hospital postings in each academic year
- Minimum 80% in subsidiary subjects.
- Attendance is mandatory for official campus events, value education activities, annual retreat/motivational programmes and value orientation programme, medical ethics, community health service programmes arranged by College/Hospital, group activities of students and meetings called by the Management.

### 7.8 INTERNAL ASSESSMENT (IA)

- There will be three periodical tests in each subject in an academic year and the average marks of best two IA exams will be taken as the final IA marks in that subject. Attending all the three tests is compulsory.
- Internal assessment marks as eligibility criteria for the university exam is different for different courses. Please refer to the RGUHS website [www.rguhs.ac.in](http://www.rguhs.ac.in) for details

### 7.9 UNIVERSITY EXAMINATION

- The examination will be held at the end of each academic year, during Aug / Sep. A supplementary examination also will be held in the middle of each academic year during March/April.

#### Criteria for Pass

- **B.Sc. Main Subjects:** 50% aggregate in theory and practical separately (i.e., 50% in the University conducted written examination and 50% aggregate i.e., marks of University conducted written examination, and internal assessment added together.)

- **BPT Main subject:** 50% of marks in theory and practical separately

(For theory 50% marks calculation -Theory internal assessment marks + University conducted written and viva vice examination.

For 50% in practical calculation - The practical internal assessment marks + University conducted practical examination)

- **Subsidiary Subjects:** The minimum prescribed marks for a pass in a subsidiary subject shall be 35% of the maximum marks prescribed for a subject.



---

## 8. POSTGRADUATE PROGRAMMES IN ALLIED HEALTH SCIENCES AND PHYSIOTHERAPY

- **MEDICAL LABORATORY TECHNOLOGY (M.Sc. MLT)**
- **MASTER OF PHYSIOTHERAPY (MPT)**

### 8.1 M.Sc. MLT

#### 8.1.1 GENERAL INFORMATION AND SCOPE

- The M.Sc. Medical Laboratory Technology are of two years duration affiliated to RGUHS.
- The course is designed to enable the student to specialize and acquire greater knowledge and understanding in the fields of laboratory sciences in order to function efficiently and effectively. This course also opens up avenues for the student in the areas of Research, Training and Teaching. In addition, it provides a foundation for a doctoral programme.
- The students shall abide by the University guidelines and Institutional policies.
- The M.Sc. MLT course at St. John's Medical College, Bengaluru, offers 3 sub-specialities.
  - M.Sc. MLT Microbiology & Immunology
  - M.Sc. MLT Clinical Biochemistry
  - M.Sc. MLT Haematology & Blood Transfusion

#### 8.1.2 ELIGIBILITY

##### **M.Sc. MLT:**

- A pass in B.Sc. MLT course from an institution affiliated to RGUHS, or from any other university considered as equivalent by RGUHS
- A candidate who has completed B.Sc. in Clinical Biochemistry/Medical Biochemistry OR B.Sc. in Clinical Microbiology/Medical Microbiology are eligible to join M.Sc. MLT in Clinical Biochemistry & M.Sc. MLT in Microbiology & Immunology respectively.
- Candidates passing B.Sc. MLT through correspondence or distance education shall not be eligible.

**NOTE:** For details of application procedure, entrance exam & interview, selection and admission of students refer to section 6.2 to 6.5

**FEE CHART,** guidelines for fee payment and fee refund policy are given under Section 6.6.

**STIPEND:** M.Sc. MLT students will receive a stipend of Rs.7000/- per month

#### 8.1.3 ACCOMODATION

- Hostel facility is extended to outstation candidates, but not guaranteed since it **is subject to availability.**
- It is compulsory for all hostelites to be messing members
- It is mandatory for the candidates to have a local guardian to avail hostel facility. A separate local guardian form has to be filled up the time of admission. Continuation of stay in hostel is dependent on the condition of satisfactory academic progress by the student. **In case of continued poor progress/ or indiscipline the students may be asked to leave the hostel.**

---

#### 8.1.4 COURSE CURRICULUM

- M.Sc. MLT are 2- year courses. For details of course curriculum, syllabus and examinations please refer to the RGUHS website [www.rguhs.ac.in](http://www.rguhs.ac.in).

#### 8.1.5 ATTENDANCE

- Students pursuing the degree courses need to be with the concerned department for the entire duration of the course as full-time student.
- Minimum 80% attendance in main subjects separately for Theory, Practical and Hospital postings in each academic year.
- Minimum 80% attendance in subsidiary subjects
- Attendance is mandatory for official campus events, value education activities, annual retreat, Medical Ethics, community health service programmes arranged by College/Hospital, group activities of students and meetings called by the Management.

#### 8.1.6 INTERNAL ASSESSMENT (IA)

- There will be three periodical tests in each subject in an academic year and the average marks of best two IA exams will be taken as the final marks in that subject. Attending all the three tests is compulsory.
- IA marks as eligibility criteria to be eligible for university exam is 50% in theory and 50% in practical exams.

#### 8.1.7 UNIVERSITY EXAMINATION

- The examination will be held at the end of each academic year of the course during Sept/Oct. A supplementary examination also will be held in the middle of each academic year during April/May.

#### Criteria for Pass

##### M.Sc. MLT

- **Main Subjects:**

Theory – Minimum 50% marks in each paper

Practical – Minimum 40% in Practical alone & 50% aggregate (Practical & Vice versa)

- **Subsidiary Subjects:**

**M.Sc. MLT:** The minimum prescribed marks for a pass in a subsidiary subject shall be 35% of the maximum marks prescribed for a subject.

#### Maximum duration for completion of course:

- **M.Sc. MLT:** A candidate shall complete the course within 4 years from date of admission, failing which the candidate will be disqualified. A maximum of 4 attempts is permitted.

---

## **8.2 MASTER OF PHYSIOTHERAPY (MPT)**

### **8.2.1 GENERAL INFORMATION AND SCOPE**

The Master's Degree in Physiotherapy is a two-year program consisting of classroom teaching, self-directed learning, academic activities and clinical posting. In the first-year theoretical basis of physiotherapy is refreshed along with research methodology and biostatistics. The students are rotated in all areas of clinical expertise during this period. They are required to choose their study for dissertation and submit a synopsis. During the second year the students will be posted in their area of specialty. They are required to complete and submit their dissertation. The learning program includes seminars, journal reviews, case presentations, case discussions and classroom teaching. External clinical postings at other reputed centres in the country are also included in order to offer a wider spectrum of experience. The students are encouraged to attend conferences/workshops to enhance their knowledge during the course of study. University examinations are held at the end of second year. **The students shall abide by the university guidelines and Institutional policies.**

#### **Electives Offered are:**

- Master of Physiotherapy in Musculoskeletal Disorders (MPT-MKS)
- Master of Physiotherapy in Cardio-vascular & Pulmonary Sciences (MPT-CVP)
- Master of Physiotherapy in Paediatrics (MPT-Ped.)
- Master of Physiotherapy in Community Physiotherapy (MPT-Com)
- Master of Physiotherapy in Neurological Sciences (MPT-Neuro)

### **8.2.2 ELIGIBILITY**

- A Pass in B.Sc. (Physiotherapy) or BPT degree from institutions where the mode of study is a full-time program, with minimum 3½ years / 4 ½ years duration from RGUHS or any other university in India or abroad considered as equivalent
- Not less than 50% of marks in aggregate.
- Should have completed 6 months of compulsory rotating internship in Physiotherapy in Colleges recognized by RGUHS – Karnataka.
- Candidates who have passed BPT through Correspondence or Distance Education program are not eligible.

**NOTE: For details of application procedure, entrance test & interview, selection and admission of students refer to section 6.2 to 6.5.**

**FEE CHART, guidelines for fee payment and fee refund policy are given under section 6.6.**

**STIPEND: MPT students will receive a stipend of Rs.7000/- per month**

---

### 8.2.3 ACCOMODATION

- Hostel facility is extended to outstation candidates **subject to availability**, but not guaranteed.
- It is compulsory for all hostelites to be messing members.
- It is mandatory for the candidates to have a local guardian to avail hostel facility. A separate local guardian form has to be filled up the time of admission. Continuation of stay in the hostel is dependent on the condition of satisfactory academic progress by the student. **In case of continued poor progress/indiscipline the students may be asked to leave the hostel**

### 8.2.4 COURSE CURRICULUM

#### DURATION OF THE COURSE

The duration of MPT course is extended over a period of two continuous years on a full-time basis. Any break in the career, will result in extension of the course and the power of refixation of the term will be vested with the University.

#### METHOD OF TRAINING

The training of postgraduate students for MPT degree is be on a full-time basis with graded responsibilities in the management and treatment of patients entrusted to his / her care. The participation of all the students in all facets of educational process including seminars, group discussions, clinical rounds, case demonstrations, clinics, journal review meetings & CME is essential. Students are also required to participate in the teaching and training programs of undergraduate students. Training includes involvement in laboratory experimental work and research studies.

#### INTERNAL MONITORING

The academic progress of students is monitored through continuous appraisal, based on participation of students in various teaching / learning activities as well as formal structured assessment.

### 8.2.5 ATTENDANCE

- Minimum of 80% of the total classes conducted during each academic year of the MPT course. Leave of any kind is not to be counted as part of academic term.
- A student who does not satisfy the requirement of attendance in one or more subjects will not be permitted to appear for the University Examination. He / She will be required to make up the deficit in attendance to become eligible to take subsequent examination.

### 8.2.6 UNIVERSITY EXAMINATION

- The University MPT Final Examination is conducted at the end of 2nd year. The student is to register for all the papers when he/she appears for the first time. If a student fails in theory and/or practical of MPT Final Examination, he/she has to reappear for all the papers of examination in both theory and practical.
- A candidate shall be declared pass if he / she secures minimum 50% of marks in theory aggregate and 50% of marks in Practical/Clinical and Viva-Voce aggregate.

---

## 9. POST GRADUATE COURSES IN HOSPITAL ADMINISTRATION

### 9.1 GENERAL INFORMATION AND SCOPE

The Department of Hospital Administration offers two courses:

- (A) Master of Hospital Administration and
- (B) Diploma in Hospital Administration.

The courses in Hospital Administration are designed to enable the student to develop:

- A basic understanding of the total healthcare delivery system, its complexities and the role of an individual Healthcare Institution as a sub system.
- Deeper understanding of multi-disciplinary and multi-dimensional nature of health management and a basic insight into functional discipline.
- Scientific management approach and adequate managerial tools to improve managerial skills.
- Strategic thinking and critical awareness of their management style and be able to constantly weigh its appropriateness to deal with various professional groups, skilled and unskilled staff, patient and their families and members of the community.
- Quality orientation and commitment to continuous quality improvement, sensitive to the safety, needs and expectations of patients as well as community, at the same time highly cost conscious with commitment to keep service cost within the reach of the common people.

**The students shall abide by the University guidelines and Institutional policies.**

### 9.2 MASTER OF HOSPITAL ADMINISTRATION (MHA)

- Duration of the course: MHA is a two-year post graduate degree course affiliated to Rajiv Gandhi University of Health Sciences (RGUHS), Karnataka.

#### 9.2.1 ELIGIBILITY

- Admission is open to male and female candidates.
- Age Criteria: The Candidate should have completed 19 years of age at the time of admission.
  - Academic Eligibility: To be eligible for admission, a candidate shall have obtained a Bachelor degree with a minimum of 50% aggregate of marks in all the years of university examination. In case of SC/ST candidates the minimum marks shall be 45%.
  - Bachelor's degree in any one of the following from an institution affiliated to RGUHS or any other university established under law considered equivalent by RGUHS.
    - viz, MBBS, BDS, BAMS, BHMS, BPT, B.Sc. Nursing (Basic or Post basic), B.Pharm., Hospital /Health Administration (BHA), and B.Sc. in Allied Health Sciences.

OR

- Bachelor's degree in Arts (BA), Commerce (B. Com), Science (B.Sc.), Law (LLB), Social Work (BSW), Engineering (B. Tech/B. E) or Management (BBM/BBA) from a University established under law and recognized by the University Grants Commission

---

**NOTE: Application procedure, entrance exam & interview, selection and admission of candidates - refer to section 6.2 to 6.5.**

**For Fee chart, guidelines on fee payment and refund policy refer Section 6.6**

### **9.2.2 COURSE CURRICULUM**

- MHA is a two-year course which is conducted in four semesters. The course curriculum, syllabus, guidelines and examinations are conducted according to the directions given by Rajiv Gandhi University of Health Sciences, Karnataka, from time to time. RGUHS has the right to revise and modify the syllabus and guidelines anytime. For the present syllabus details please refer to the RGUHS website [www.rguhs.ac.in](http://www.rguhs.ac.in)

### **9.2.3 ATTENDANCE**

- Every student is expected to attend all the sessions of Theory and hospital postings (practical) in each semester. The minimum required attendance to be eligible to appear for RGUHS examinations is 80% in each subject
- Attendance for hospital posting (practical) will also be recorded. Minimum of 80 % attendance and 50% marks in IA are required for a student to be eligible for RGUHS theory examinations at the end of every semester.
- Attendance for official campus events, value education activities, medical ethics, community health service programmes arranged by college/hospital, group activities of students and meetings called by the management is compulsory.

### **9.2.4 INTERNAL ASSESSMENT (IA)**

- There will be two internal assessment tests in each subject in every semester and the average marks of IA exams will be taken as the final marks in that subject. Attending both IA assessments is compulsory.
- Eligibility to write university examination: 50% in theory subjects.

### **9.2.5 UNIVERSITY EXAMINATION**

- The examination will be held at the end of each semester of the course during March/ April and Sept/Oct as decided by RGUHS.

#### **Maximum duration for completion of the course:**

- A candidate shall complete the course within 6 years from the date of admission with a maximum of 4 attempts/subject, failing which the candidate will be discharged. (Subject to RGUHS guidelines).

#### **Criteria for pass**

##### **Main Subjects:**

Semester I, II & III – Minimum 50% in each paper aggregate in the written exam conducted by RGUHS.

Semester IV- In addition to the above candidates should score 50% of marks in Viva & Practical.

**Subsidiary Subjects:** The minimum prescribed marks for a pass in a subsidiary subject shall be 35% of the maximum marks prescribed for a subject.



---

## 9.3 DIPLOMA IN HOSPITAL ADMINISTRATION (DHA)

### 9.3.1 DURATION OF THE COURSE:

- DHA is a one-year course inclusive of one-month internship, conducted by Department of MHA and is approved by St. John's National Academy of Health Sciences, Bengaluru.

### 9.3.2 ELIGIBILITY FOR ADMISSION

- Admission is open to all candidates who are professed members of Catholic Religious Orders.
- Age: Candidate must be above the age of 19 years at the time of admission.
- Academic eligibility for admission: Candidate should have obtained a basic degree or diploma. General Comprehension and fluency in English language are expected from all candidates.
- Special consideration will be given to alumni of St. John's Medical College, Bengaluru, who have served in medically under-served areas and with underprivileged people, recognized as such by the College.

**NOTE: Application procedure, selection and admission of candidates - refer to section 6.2 to 6.5. For Fee details refer section 6 6.**

### 9.3.3 COURSE CURRICULUM

- DHA course will be conducted through class room teaching (including case studies, assignments, discussions, seminars etc), self-directed reading and guided learning. The students will also get practical orientation in the various departments and facilities of St. John's Medical College Hospital, Bengaluru. Field visits, exposure training in various healthcare settings and participation in national level conferences are also requirements for the completion of the course.
- **Subjects include:**
  1. Fundamentals of Management, Organizational Behaviour and Organization Development.
  2. Accounting, Hospital Finance Management and Project Management.
  3. Hospital Planning and Facilities Management.
  4. Quality Management in Healthcare, Healthcare Ethics and Legal Aspects.
  5. Management of Not-for-Profit Hospitals and Community Health Services.
  6. Human Resource Management and Labour Relations.

### 9.3.4 ASSESSMENT AND EXAMINATION

- Evaluation of the performance of each student will be carried out by the Department of Hospital Administration. Assessments may be done in the form of written examination, assignment, viva-voce or presentation.
- A certificate titled "Diploma in Hospital Administration, Department of Hospital Administration, St. John's National Academy of Health Sciences" will be awarded to those students who secure a minimum of grade "C" or above in all the subjects of the Course and Project study.
- If a student gets a failing grade (D) in more than two subjects, instead of the above said certificate, only a 'Course Completion Certificate' shall be awarded to the candidate.
- The student will be given one more opportunity in the following session to repeat and improve on deficient subjects. Only on successful completion of deficient subjects, the Diploma Certificate shall be awarded.

---

## 10.DOCTORAL(Ph.D) PROGRAMME

St. Johns Medical College offers PhD programmes affiliated to the Rajiv Gandhi University of Health Sciences in the following subjects:

Anatomy	Anaesthesia
Physiology	Medicine
Biochemistry	Paediatric Nephrology
Microbiology	Psychiatry
Pathology	Molecular Medicine
Community Medicine	
Pharmacology	

For details of guides and department refer St. John website ([www.stjohns.in](http://www.stjohns.in)), select admission → courses → Ph.D.

Interested candidates may contact the Dean/Head of the concerned subject for further details or email : [sjmc.admission@stjohns.in](mailto:sjmc.admission@stjohns.in)

# **FACULTY**

**ST. JOHN'S MEDICAL COLLEGE, BANGALORE**  
**BENGALURU - 560 034**

***DIRECTOR***

REV. FR. JESUDOSS RAJAMANICKAM  
B.PH, B.TH, L.TH

**DEAN**

DR. GEORGE D'SOUZA, MD, DNB

**ASSOCIATE DIRECTOR - COLLEGE**

Rev. Dr. J. CHARLES DAVIS, Ph.D &  
HABILITATION (BIOETHICS, GERMANY)

**VICE DEANS**

DR. ANURADHA ANANTHAMURTHY, MD (UG)  
DR. THOMAS MATHEW, MD, DNB, DM(PG)  
DR. MARY DIAS, MD (AHS)  
DR. BOBBY JOSEPH, MD, DNB (CODE)

**REGISTRAR**

DR. MARJORIE M.A. CORREA, MD

**ASSISTANT REGISTRAR**

DR. AVITA ROSE JOHNSON, MD, DNB,  
PGDMLE, MNAMS

**LIST OF TEACHING FACULTY AS ON JULY 2023**

S.NO	NAME	QUALIFICATION	DESIGNATION
<b>ANAESTHESIA</b>			
1.	DR. BINDU GEORGE	MBBS, DA, MD	PROFESSOR & HEAD
2.	DR. SATHYANARAYANA P.S	MBBS, MD, DNB, PDCC	PROFESSOR
3.	DR. SAVITHA K S	MBBS, MD, Ph.D	PROFESSOR
4.	DR. MOSES CHARLES D'SOUZA	MBBS, MD	PROFESSOR
5.	DR. MANJULADEVI. M	MBBS, DA, DNB	PROFESSOR
6.	DR. SURBHI GUPTA	MBBS, MD	PROFESSOR
7.	DR. NISCHALA DIXIT	MBBS, DA, DNB, MRCA	PROFESSOR
8.	DR. VIKRAM SHIVAPPAGOUNDAR.M	MBBS, MD	ASSOCIATE PROFESSOR
9.	DR. KARTHIK JAIN M	MBBS, MD	ASSOCIATE PROFESSOR
10.	DR. APOORWA KOTHARI	MBBS, MD	ASSOCIATE PROFESSOR
11.	DR. ARPANA J	MBBS, DA, DNB	ASSOCIATE PROFESSOR
12.	DR. DEEPA BHASKARAN	MBBS, DA, DNB	ASSOCIATE PROFESSOR
13.	DR. RASHMI RANI	MBBS, MD (Physiology), DNB	ASSOCIATE PROFESSOR
14.	DR. SHILPA J	MBBS, DNB	ASSISTANT PROFESSOR
15.	DR. USHAR SASTRY	MBBS, DA, DNB	ASSISTANT PROFESSOR
16.	DR. SHILPA BHIMASEN JOSHI	MBBS, DNB	ASSISTANT PROFESSOR
17.	DR. ANJALI T M OLLAPALLY	MBBS, MD	ASSISTANT PROFESSOR
18.	DR. THOMAS T. VELLAPALLY	MBBS, MD, DNB	ASSISTANT PROFESSOR
19.	DR. SOWMYA SRI V	MBBS, DNB	ASSISTANT PROFESSOR
20.	DR. NAYANTHARA J	MBBS, MD	ASSISTANT PROFESSOR
21.	DR. NILIMA RHAEL MUTHACHEN	MBBS, MD	ASSISTANT PROFESSOR
22.	DR. MATHANGI KRISHNAKUMAR	MBBS, MD	ASSISTANT PROFESSOR
23.	DR. GIFTY SUSAN PHILIP	MBBS, DNB	ASSISTANT PROFESSOR
24.	DR. NIDHI SRIVASTAVA	MBBS, MD, PDCC (Organ Transplant)	ASSISTANT PROFESSOR
25.	DR. NATHASHA OLGA VAS	MBBS, MD, PDF (Neuro Critical Care)	ASSISTANT PROFESSOR
26.	DR. DESHIKAR L N	MBBS, DA, FICM, IDCCM	JR. CONSULTANT(Level of Assistant Professor)
27.	DR. P. USHA NANDINI	MBBS, MD	SENIOR RESIDENT
28.	DR. SOUMYA G	MBBS, MD	SENIOR RESIDENT
29.	DR. RADHIKA R	MBBS, MD	SENIOR RESIDENT
30.	DR. RAJITHA J	MBBS, MD	SENIOR RESIDENT
31.	DR. SURAJ LIONEL PINTO	MBBS, MD	SENIOR RESIDENT
32.	DR. TEJAL RAMCHANDRA NATEKAR	MBBS, MD	SENIOR RESIDENT
33.	DR. ANN MARY LUKOSE	MBBS, MD	SENIOR RESIDENT

---

34.	DR. SIS JOSE	MBBS, MD	SENIOR RESIDENT
35.	DR. CATHERINE ANTO	MBBS, MD	SENIOR RESIDENT
36.	DR. ALBIN ALOYSIUS	MBBS, MD	SENIOR RESIDENT
37.	DR. SONIKA GUPTA	MBBS, MD	SENIOR RESIDENT
38.	DR. KSHAMA RAO	MBBS, MD	SENIOR RESIDENT
39.	DR. ANVITA KRISHNAKUMAR	MBBS, MD, DNB	SENIOR RESIDENT
40.	DR. RIYA ANN JACOB	MBBS, MD	SENIOR RESIDENT

#### ANATOMY

1	DR. YOGITHA RAVINDRANATH	MBBS, MD	PROFESSOR & HEAD
2	DR. NACHIKET SHANKAR	MBBS, MS	PROFESSOR
3	DR. STEPHEN DAYAL S	MBBS, MD	ASSOCIATE PROFESSOR
4	DR. LAKSHMI T A	MBBS, MD	ASSOCIATE PROFESSOR
5	DR. SMITHA JSM	M.Sc Med Anat, Ph.D	ASSISTANT PROFESSOR
6	DR. ANJALI S	MBBS, MD	ASSISTANT PROFESSOR
7	DR. AZRA JABEEN	MBBS, MD	ASSISTANT PROFESSOR
8	DR. PAGUTHARIVU P	BHMS, MSc Med Anat	TUTOR
9	DR. CHAVVI MAKKER	MBBS, MD	SENIOR RESIDENT

#### BIOCHEMISTRY

1.	DR. JAYAKUMARI S	MBBS, MD	PROFESSOR & HEAD
2.	DR. ANITA R. BIJOOR	MBBS, MD, Ph.D	PROFESSOR
3	DR. ANITA DEVANATH	MBBS, MD, DNB	PROFESSOR
4	DR. GERALDINE MENEZES	M.Sc, Ph.D	PROFESSOR
5	DR. VINOD GEORGE THYKADAVIL	M.Sc, Ph.D	PROFESSOR
6	DR. SHUBHA N PRAKASH	MBBS, MD	ASSOCIATE PROFESSOR
7	DR. JYOTHI D N	MBBS, MD	ASSISTANT PROFESSOR
8	DR. JIKKU TERESA P	MBBS, MD	SENIOR RESIDENT
9	DR. ATHULLIA	MBBS, MD	SENIOR RESIDENT
10	MRS. ANU MALIYAKAL	M.Sc	TUTOR
11	MRS. SAJANA PAUL	M.Sc	TUTOR

#### BIOSTATISTICS

1	DR. TINKU THOMAS	M.Sc, Ph.D	PROFESSOR & HEAD
2	DR. SANTU GHOSH	M.Sc, Ph.D	ASSOCIATE PROFESSOR
3.	MR. JOHN MICHAEL RAJ A	M.Sc	LECTURER
4.	MS. SUMITHRA SELVAM	M.Sc	LECTURER

#### CARDIOLOGY

1.	DR. SRILAKSHMI M A	MBBS, DNB Med, DNB Cardio	PROFESSOR & HEAD
2.	DR. KIRON VARGHESE	MBBS, MD, DM, FACC	PROFESSOR
3.	DR. SHWETA AGRAWAL	MBBS, MD, DM	ASSOCIATE PROFESSOR
4.	DR. DATTA GUPTA ADITI	MBBS, MD, DNB	ASSISTANT PROFESSOR
5.	DR. ANURAAG GUPTA	MBBS, MD	SENIOR RESIDENT
6.	DR. ABHILASH KONDA	MBBS, MD	SENIOR RESIDENT
7.	DR. THIRUMAL K T	MBBS, MD	SENIOR RESIDENT
8.	DR. LAHARI S	MBBS, DNB(Family Med)	SENIOR RESIDENT (Registrar)

---

**CARDIO-THORACIC AND VASCULAR SURGERY**

1.	DR. SREEKAR BALASUNDARAM	MBBS, MS, DNB (Gen. Surgery), DNB (CTH), FIACS	PROFESSOR & HEAD
2.	DR. K.N.SRINIVASAN	MBBS, MS, M.CH, FIACS	SENIOR CONSULTANT at the level of Professor
3.	DR. ANAND KURIYAN MATHEW	MBBS, MS, M.CH	ASSOCIATE PROFESSOR
4.	DR. GIRISH G	MBBS, MS, M.CH	SENIOR RESIDENT

**COMMUNITY MEDICINE**

1	DR. BOBBY JOSEPH	MBBS, MD, DNB, PGDGM	PROFESSOR & HEAD
2	DR. ARVIND KASTURI	MBBS, MD, DNB, PGDGM	PROFESSOR
3	DR. B RAMAKRISHNA GOUD	MBBS, MD, DIH, MBA, M.Sc (PSY)	PROFESSOR
4	DR. SULEKHA T	MBBS MD	PROFESSOR
5	DR. NAVEEN RAMESH	MBBS, MD, DIH, PGDIS, MBA	PROFESSOR
6	DR. DEEPTHI SHANBHAG	MBBS, MD	ASSOCIATE PROFESSOR
7	DR. PRETESH ROHAN KIRAN	MBBS, MD, PGDGM	ASSOCIATE PROFESSOR
8	DR. RASHMI RODRIGUES	MBBS, MD, Ph.D	ASSOCIATE PROFESSOR
9	DR. TWINKLE AGRAWAL	MBBS, MD	ASSOCIATE PROFESSOR
10	DR. FARAH NAAZ FATHIMA	MBBS, MD, DNB, PGDHHM	ASSOCIATE PROFESSOR
11	DR. AVITA ROSE JOHNSON	MBBS, MD, DNB, PGDMLE, MNAMS	ASSOCIATE PROFESSOR
12	DR. NANCY ANGELINE G	MBBS, MD, DTM&H	ASSISTANT PROFESSOR
13	DR. MERLYN JOSEPH	MBBS, MD, DNB	SENIOR RESIDENT
14	DR. MINU ROSE MANI	MBBS, MD	SENIOR RESIDENT
15	DR. MADONNE RUFINA DISHANI	MBBS, MD	SENIOR RESIDENT
16	DR. POOJA R S	MBBS, MD, DNB	SENIOR RESIDENT

**CLINICAL IMMUNOLOGY & RHEUMATOLOGY**

1	DR. VINEETA SHOBHA	MBBS, MD, DM	PROFESSOR & HEAD
2	DR. RAMYA J	MBBS, MD, PDF	PROFESSOR
3	DR. ANNA C DAS	MBBS, MD, DM	ASSISTANT PROFESSOR

**CRITICAL CARE MEDICINE**

1.	DR. BHUVANA KRISHNA	MBBS, MD, IDCCM, IFCCM	PROFESSOR & HEAD
2.	DR. AMARJA. A. HAVALDAR	MBBS, MD, DNB, FNB, EDIC, DM, PDF (Neuro Anaes)	ASSOCIATE PROFESSOR
3	DR. NATESH PRABU. R	MBBS, MD, DNB, EDIC, DM	ASSOCIATE PROFESSOR
4	DR. CAROL D'SILVA	MBBS, MD, FNB, EDIC	ASSOCIATE PROFESSOR
5	DR. DIPALI ANAND TAGGAARSI	MBBS, MD, DM	ASSISTANT PROFESSOR
6	DR. DIVYA DINAKAR A	MBBS, MD, DNB	ASSISTANT PROFESSOR
7	DR. KAJAL ARORA	MBBS, MD, FNB	ASSISTANT PROFESSOR
8	DR. HARSHAVARDHINI	MBBS, MD	ASSISTANT PROFESSOR
9	DR. JACOB MATHEW	MBBS, MD	SENIOR RESIDENT
10	DR. CHAKRADHAR	MBBS, MD	SENIOR RESIDENT
11	DR. RATESH KELLUR	MBBS, MD	SENIOR RESIDENT
12	DR. MATHEW JACOB	MBBS, MD	SENIOR RESIDENT
13	DR. KEERTHAN. G	MBBS, MD	SENIOR RESIDENT
14	DR. GOUSMOHAMMED M	MBBS, MD	SENIOR RESIDENT



**DENTAL SURGERY**

1	DR. PURUSHOTHAM MANVI	MDS, Prosthodontics	PROFESSOR & HEAD
2	DR. GEETA KALE	MDS, Periodontics	PROFESSOR
3	DR. C. S. NITHYA	MDS, Oral Surgery	PROFESSOR
4	DR. HEMA AGNIHOTRI	MDS, Prosthodontics	ASSOCIATE PROFESSOR
5	DR. SHINIE RAZIL GOVEAS	MDS, Pedodontics	ASSISTANT PROFESSOR
6	DR. KHALID SHERIFF	BDS	JR. CONSULTANT(at the level of Assistant Professor)
7	DR. ANJU ROY	BDS	TUTOR

**DERMATOLOGY**

1	DR. VIJAY AITHAL	MBBS, DVD, DNB	PROFESSOR & HEAD
2	DR. SUJATA RAJ	MBBS, MD, DNB	PROFESSOR
3	DR. MARY AUGUSTINE	MBBS, MD	PROFESSOR
4	DR. ISHWARA BHAT	MBBS, MD	PROFESSOR
5	DR. MERYL ANTONY	MBBS, MD, DNB	ASSOCIATE PROFESSOR
7	DR. MADHUKARA J	MBBS, DVD, DNB	ASSOCIATE PROFESSOR
8	DR. SOWMYA KAIMAL	MBBS, MD	ASSOCIATE PROFESSOR
9	DR. SHUBHA B.	MBBS, MD, DNB	ASSISTANT PROFESSOR
10	DR. PRATHIBHA J P	MBBS, DDVL, DNB	ASSISTANT PROFESSOR
11	DR. SUMEDHA BALLAL	MBBS, MD	ASSISTANT PROFESSOR
12	DR. CAROL LOBO	MBBS, MD	SENIOR RESIDENT

**EMERGENCY MEDICINE**

1.	DR. SHAKUNATALA MURTY KANDIKUPPA	MBBS, MD, MRCP, FACEE	PROFESSOR & HEAD
2.	DR. GIRISH NARAYAN	MBBS, MD, FACEE, M.Sc(Epi), MRCEM	PROFESSOR
3.	DR. KARTHIK REDDY C H	MBBS, MD	ASSOCIATE PROFESSOR
4.	DR. MANASA S. SESHADRI	MBBS, DPM, DNB	ASSISTANT PROFESSOR
5.	DR. UDAYAGIRI PRANAVI	MBBS, DNB	ASSISTANT PROFESSOR
6.	DR.DINDIGAL RAMAKRISHNA NARASIMHA	MBBS, MD	ASSISTANT PROFESSOR
7.	DR. MAHASWETA CHOUDHURY	MBBS, DNB	ASSISTANT PROFESSOR
8.	DR. ASHISH NATHANIEL	MBBS, MD	SENIOR RESIDENT
9.	DR. VINAY NANJAPPA	MBBS, DNB	SENIOR RESIDENT
10.	DR. ABEER KHAN	MBBS, MD	SENIOR RESIDENT
11.	DR. SHALENE SHWETHA S	MBBS, FEM	TUTOR
12.	DR. JESILY JOY	MBBS	TUTOR

**ENDOCRINOLOGY**

1	DR. GANAPATHI BANTWAL	MBBS, MD, DM, DNB, MNAMS (Endo)	PROFESSOR & HEAD
2	DR. VAGEESH AYYAR	MBBS, MD, DM, DNB, MNAMS (Endo)	PROFESSOR
3	DR. BELINDA GORGE	MBBS, MD, DM	ASSOCIATE PROFESSOR
4	DR. SONALI APPAIAH	MBBS, MD, DM	ASSISTANT PROFESSOR
5	DR. VISHWANATH S	MBBS, MD, DM	ASSISTANT PROFESSOR

---

**ENT (Otorhinolaryngology)**

1	DR. SREENIVAS V	MBBS, MS	PROFESSOR & HEAD
2	DR. ANITA C ROSS	MBBS, MS	PROFESSOR
3	DR. BALASUBRAMANYA A.M.	MBBS, MS	PROFESSOR
4	DR. RAMESH A	MBBS, MS	PROFESSOR
5	DR. SOUMYA M.S.	MBBS, MS	ASSOCIATE PROFESSOR
6	DR. PRATIBHA C B	MBBS, DLO, DNB	ASSOCIATE PROFESSOR
7	DR. DEEPTHI SATISH	MBBS, DNB	ASSISTANT PROFESSOR
8	DR. CHAITHRA B G	MBBS, MS	SENIOR RESIDENT
9	DR. JINORAJ R	MBBS, MS	SENIOR RESIDENT
10	MRS. M. NAGAPOORNIMA	M.Sc, Speech & Hearing	TUTOR
11	MRS. SOWMYA M NAYAK	Masters in Audiology & Speech Language Pathology	TUTOR

**FAMILY MEDICINE**

1.	DR. G D RAVINDRAN	MBBS, MD, DNB, FCGP	PROFESSOR & HEAD
2.	DR. SANJIV LEWIN	MBBS, MD, DNB	PROFESSOR
3.	DR. HEMAVATHI DASAPPA	MBBS, DNB	ASSISTANT PROFESSOR
4.	DR. JOHN ABRAHAM	MBBS, M MED, DNB	ASSISTANT PROFESSOR
5.	DR. RAMYA S	MBBS, DNB, FID	SENIOR RESIDENT

**FORENSIC MEDICINE**

1	DR. VARGHESE P S	MBBS, DFM, MD	PROFESSOR & HEAD
2	DR. SANJAY SUKUMAR	MBBS, MD	PROFESSOR
3	DR. MARILYN DELIGHTA	MBBS, MD	ASSISTANT PROFESSOR
4	DR. BETTY ALBEN	MBBS	SENIOR TUTOR
5	DR. BHANU THEJ	MBBS	TUTOR
6	DR. PRIYANKA SUSAN ZECHARIAH	MBBS	TUTOR

**GASTROENTEROLOGY**

1	DR. MALLIKARJUN	MBBS, MD, DM	PROFESSOR & HEAD
2	DR. HARSHAD DEVARBHAVI	MBBS, MD, DNB (Med), DM, DNB (Gastro), MNAMS	PROFESSOR
3	DR. SYED SHAFIQ	MBBS, MD, DM	ASSOCIATE PROFESSOR
4	DR. SUNU SARA KURIEN	MBBS, MD, DM	ASSISTANT PROFESSOR

---

**GENERAL MEDICINE**

1	DR. RATNAMALA CHOUDHURY	MBBS, MD	PROFESSOR & HEAD
2	DR. CHANDRAMOULI K S	MBBS, MD	PROFESSOR
3	DR. JYOTHI IDICULLA	MBBS, MD, FRCP	PROFESSOR
4	DR. SEENA SANKAR	MBBS, MD	PROFESSOR
5	DR. SOUMYA UMESH	MBBS, DNB	PROFESSOR
6	DR. GEETHA ANN FRANCIS	MBBS, DNB	PROFESSOR
7	DR. ANASUYA.D.S.	MBBS, MD	ASSOCIATE PROFESSOR
8	DR. ABDUL MATEEN ATHAR	MBBS, MD	ASSOCIATE PROFESSOR
9	DR. SHRUTHI KULKARNI	MBBS, DNB	ASSOCIATE PROFESSOR
10	DR. MARY GEORGE. K	MBBS, MD	ASSOCIATE PROFESSOR
11	DR. SAVITHA ANN SEBASTIAN	MBBS, MD	ASSOCIATE PROFESSOR
12	DR. THENMOZHI. N	MBBS, MD	ASSISTANT PROFESSOR
13	DR. JONITA EVETT FERNANDES	MBBS, MD	ASSISTANT PROFESSOR
14	DR. JANANEE MURALIDHARAN	MBBS, MD, DNB, MRCP	ASSISTANT PROFESSOR
15	DR. RESHMA P.K	MBBS, MD	ASSISTANT PROFESSOR
16	DR. RAGHAPRIYA	MBBS, MD	ASSISTANT PROFESSOR
17	DR. SANDHYA S	MBBS, MD	SENIOR RESIDENT
18	DR. NEELAM H JAIN	MBBS, MD	SENIOR RESIDENT
19	DR. ELSA SUNNY	MBBS, MD	SENIOR RESIDENT
20	DR. ROSE TOM	MBBS, MD	SENIOR RESIDENT
21.	DR. ABHISHEK VISHWANATH HONAWAD	MBBS, MD	SENIOR RESIDENT
22.	DR. ROSHAN CHRISTOPHER ROSS	MBBS, MD	SENIOR RESIDENT
23.	DR. VEMULA GNANA PRASUNA	MBBS, MD	SENIOR RESIDENT
24.	DR. ASHIKA DAVIS	MBBS, MD	SENIOR RESIDENT

**GENERAL SURGERY**

1.	DR. SRIDAR GOVINDARAJ	MBBS, MS, DNB, FRCS	PROFESSOR & HEAD
2.	DR. ANTHONY P. ROZARIO	MBBS, DNB, FRCS, FMAS, FACRSI	PROFESSOR
3.	DR. SUBRAMANYAM S G	MBBS, MS, FMAS, FIAGES	PROFESSOR
4.	DR. HIMAGIRISH K RAO	MBBS, MS, MRCS(ED), M.CH, FIMSA, FITS	ASSOCIATE PROFESSOR
5.	DR. CLEMENT PRAKASH T J	MBBS, MS	ASSOCIATE PROFESSOR
6.	DR. KARTHIKEYAN. K	MBBS, MS	ASSISTANT PROFESSOR
7.	DR. GIRIDHAR. A	MBBS, MS	ASSISTANT PROFESSOR
8.	DR. AKSHAI. C K	MBBS, MS	ASSISTANT PROFESSOR
9.	DR. SUHAS S KUMAR	MBBS, MS, FIAGES	ASSISTANT PROFESSOR
10.	DR. NAYAN JOHN PINTO	MBBS, MS	ASSISTANT PROFESSOR
11.	DR. DEEPTI MANJUNATH	MBBS, MS	ASSISTANT PROFESSOR
12.	DR. SHAIK MOHAMMED SAFI UDDIN	MBBS, MS	SENIOR RESIDENT

---

**GYNAECOLOGIC ONCOLOGY**

1.	DR. PREMALATHA T.S	MBBS, DGO, DNB (OBG)	PROFESSOR & HEAD
2.	DR. KIRAN ABHIJIT KULKARNI	MBBS, MS(OBG), M.CH(Gynae)	ASSOCIATE PROFESSOR
3.	DR. GEETA ACHARYA	MBBS, MD, M.CH (Gyne onco)	ASSOCIATE PROFESSOR
4.	DR. VISHAKHA CHANDRAKANT BIDKAR	MBBS, DGO, DNB(OBG)	SENIOR RESIDENT

**CLINICAL HAEMATOLOGY**

1	DR. CECIL ROSS	MBBS, MD	PROFESSOR & HEAD
2	DR. SEETHARAM ANANDRAM	MBBS, MRCP, FRCP (Path), CCT (UK, Haemat)	ASSOCIATE PROFESSOR
3	DR. SANJUKTA RAO	MBBS, MD	ASSISTANT PROFESSOR

**HISTORY OF MEDICINE**

1	MRS. RADHIKA HEGDE	BA, MA (History)	TUTOR
---	--------------------	------------------	-------

**HOSPITAL ADMINISTRATION**

1.	REV. DR. JOHN VARGHESE THEKKEKARA	MHA, MHRM, M.PHIL, Ph.D	PROFESSOR
2.	MRS. SARA MATHEW	MHA, PGDMLE	PROFESSOR & HEAD
3	REV. FR. SABU NEDUNILATH	MH A	ASSOCIATE PROFESSOR
4	MRS. SUPREETHA CASTELINO	B.Sc, MHA	ASSOCIATE PROFESSOR
5	MRS. PRIYANKA ROY CHOWDHURY	B.Sc, MHA, MBA (HR)	ASSISTANT PROFESSOR
6	REV. FR. REGINALD PINTO	MHA, MHRM	ASSISTANT PROFESSOR
7	MRS. JANET SWEETY	B.Sc, MHA	ASSISTANT PROFESSOR
8.	MS. BETSY AMBROSE	MHA	LECTURER
9.	MS. SHERYL JOANNA	MHA	LECTURER
10.	MS. PRISCA DEENA	MHA	LECTURER

**MEDICAL ETHICS**

1	DR. SUNITA SIMON KURPAD	MBBS, MRC (Psych), DNB	PROFESSOR & HEAD
2	DR. G D RAVINDRAN	MBBS, MD, FCGP	PROFESSOR
3	DR. SANJIV LEWIN	MBBS, MD, DNB	PROFESSOR
4	DR. SHAKUNTHALA MURTY	MBBS, MD, MRCP, FACEE	PROFESSOR
5	DR. JYOTHI IDICULLA	MBBS, MD, FRCP	PROFESSOR
6	DR. VANAMALA ANAND ALWAR	MBBS, MD	PROFESSOR
7	DR. JOHNSON PRADEEP	MBBS, MD	PROFESSOR

---

**MEDICAL EDUCATION**

1	DR. NACHIKET SHANKAR	MBBS, MS	PROFESSOR & HEAD
2	DR. SANJIV LEWIN	MBBS, MD, DNB	MEMBER
3	DR. SITALAKSHMI S	MBBS, DCP, DNB, Ph.D	MEMBER
4	DR. SUNEETHA N.	MBBS, MS	MEMBER
5	DR. ISHWARA BHAT	MBBS, MD	MEMBER
6	DR. LAKSHMI T A	MBBS, MD	MEMBER
7	DR. PRETESH ROHAN KIRAN	MBBS, MD, DGM	MEMBER
8	DR. FARAH NAAZ FATHIMA	MBBS, MD, DNB, PGDHHM	MEMBER
9	DR. MANGALA RAO	MBBS, MD	MEMBER
10	DR. SOUMYA UMESH	MBBS, DNB	MEMBER
11	DR. KIRAN M	MBBS, MS., DNB (Gen Surg), M.CH	MEMBER
12	DR. PREM K MONY	MBBS, MD, M.Sc	MEMBER
13	DR. SHUBHA N PRAKASH	MBBS, MD	MEMBER
14	DR. SEJIL. T V	MBBS, MD	MEMBER
15	DR. THENMOZHI .N	MBBS, MD	MEMBER
16	DR. JANANEE MURALIDHARAN	MBBS, MD, DNB, MRCP	MEMBER

**MEDICAL ONCOLOGY**

1	DR. HARI MENON	MBBS, MD, DM	PROFESSOR & HEAD
2	DR. GANESHA	MBBS, MD, DM (Med.Onco)	ASSOCIATE PROFESSOR SENIOR CONSULTANT
3	DR. ANNIE K BAA	MBBS, MD, DM (Med. Onco)	ASSISTANT PROFESSOR

**MICRO BIOLOGY**

1	DR. JAYANTHI SAVIO	MBBS, MD	PROFESSOR & HEAD
2	DR. SAVITHA NAGARAJ	MBBS, MD, DNB	PROFESSOR
3	DR. RANJANI SHAMSUNDAR	MBBS, MD, DMV	PROFESSOR
4	DR. MARY DIAS	MBBS, MD	PROFESSOR
5	DR. SUPRIYA GACHINMATH B.G.	MBBS, MD, DNB	ASSISTANT PROFESSOR
6	DR. PRIYADARSHINI A P ADAKI	MBBS, MD	ASSISTANT PROFESSOR
7	DR. MAMATHA.V	MBBS, MD	ASSISTANT PROFESSOR
8	DR. ANUSHA K R	MBBS, MD	SENIOR RESIDENT
9	DR. MEDHA ALEXANDER	MBBS, MD	SENIOR RESIDENT
10	DR. DISHA DEBBARMA	MBBS, MD	SENIOR RESIDENT
11	DR. LONIKA LODHA	MBBS, MD, PDF	SENIOR RESIDENT

---

**DIVISION OF MOLECULAR BIOLOGY AND GENETICS**

1	DR. VERONICA PREETHA TILAK	MBBS	JUNIOR CONSULTANT
2	DR. SHWETA SRIVASTAVA	M.Sc, Ph.D (Molecular Biology and Biochemistry)	ASSOCIATE PROFESSOR (HOD In-charge)
3	DR. AMUDHA S	M.Sc, Ph.D (Genetics)	TUTOR/LECTURER
4	DR. PAVANA THOMAS	M.Sc Ph.D (Molecular Biology)	LECTURER

**NEONATOLOGY**

1	DR. SUMAN RAO P N	MBBS, MD, DM	PROFESSOR & HEAD
2	DR. CHANDRAKALA B S	MBBS, MD, DNB	PROFESSOR
3	DR. SAUDAMINI NESARGI	MBBS, DNB, Fellow (Neo)	ASSOCIATE PROFESSOR
4	DR. SHASHIDHAR A	MBBS, MD, DM	ASSOCIATE PROFESSOR
5	DR. BHARATHI BALACHANDER	MBBS, MD, DM, DNB	ASSOCIATE PROFESSOR
6	DR. NALINA A	MBBS, MD, DM	ASSISTANT PROFESSOR

**NEPHROLOGY**

1	DR. PRASHANT G. KEDLAYA	MBBS, MD, DM, DNB, PGDMLE	PROFESSOR & HEAD
2	DR. RENUKA S.	MBBS, MD, DNB	PROFESSOR
3.	DR. (BRIG) A JAIRAM	MBBS, MD, DNB (Med), DNB	PROFESSOR
4	DR. SHASHANK S. DHARESHWAR	MBBS, DNB (Med), DNB	ASSISTANT PROFESSOR
5	DR. SURAJ B R	MBBS, MD, DNB(Med),DNB	ASSISTANT PROFESSOR

**NEUROSURGERY**

1.	DR. SHAILESH A V RAO	MBBS, M.CH, DNB	PROFESSOR & HEAD
2.	DR. RAJESH R. RAYKAR	MBBS, MS, M.CH	PROFESSOR
3.	DR. J. ADESH	MBBS, DNB, FINR	ASSISTANT PROFESSOR
4.	DR. SIBHI GANAPATHY	MBBS, MS, M.CH, DNB, MNAMS, FAGE	ASSISTANT PROFESSOR
5.	DR. AJAY M.	MBBS, MS, M.CH	ASSISTANT PROFESSOR
6.	DR. RAVI TEJA PUVVADA	MBBS, MS, M.CH	SENIOR RESIDENT
7.	DR. VINAYAKA G J	MBBS, MS, M.CH	SENIOR RESIDENT

**NEUROLOGY**

1.	DR. RAGHUNANDAN NADIG	MBBS, MD, DNB	PROFESSOR & HEAD
2.	DR. G.R.K. SARMA	MBBS, MD, DM	PROFESSOR
3.	DR. THOMAS MATHEW	MBBS, MD, DNB, DM	PROFESSOR
4.	DR. SAGAR BADACHI	MBBS, MD, DM	ASSOCIATE PROFESSOR
5.	DR. SONIA SHIVDE	MBBS, MD, DM	ASSISTANT PROFESSOR
6.	DR. AKSHATA HUDDAR	MBBS, DM, PDF Neuromuscular Disorders	SENIOR RESIDENT
7.	DR. SINDHU V	MBBS, DNB(Med), DNB	SENIOR RESIDENT



---

**OBSTETRICS AND GYNAECOLOGY**

1	DR. SHASHIKALA KARANTH	MBBS, DGO, DNB	PROFESSOR & HEAD
2	DR. ANNAMMA THOMAS	MBBS, MD	PROFESSOR
3	DR. MANJULA S.K	MBBS, MS	PROFESSOR
4	DR. VISHNUPRIYA K.M.N	MBBS, MD	ASSOCIATE PROFESSOR
5	DR. ANURADHA G	MBBS, DGO, DNB	ASSOCIATE PROFESSOR
6	DR. RAO PREETHIVENKATACHALA	MBBS, DNB	ASSISTANT PROFESSOR
7	DR. MADHU SHWETA SHARMA	MBBS, MS, DNB	ASSISTANT PROFESSOR
8	DR. MEDINI LAKSHMESWAR	MBBS, MS, DNB	ASSISTANT PROFESSOR
9	DR. ANITHA S	MBBS, MS, DNB	ASSISTANT PROFESSOR
10	DR. JISHMA JOSE	MBBS, MS, DNB	ASSISTANT PROFESSOR
11	DR. AKSHAYA MURALI	MBBS, MS	SENIOR RESIDENT
12	DR. POORNA M N	MBBS, MS	SENIOR RESIDENT
13	DR. SAKSHI MITTAL	MBBS, MS, DNB	SENIOR RESIDENT
14	DR. ASWINI VISWANADH	MBBS, MS, DNB	SENIOR RESIDENT
15	DR. SRUSHTI RAMESH	MBBS, MS	SENIOR RESIDENT

**OPHTHALMOLOGY**

1	DR. SUNEETHA N.	MBBS, MS	PROFESSOR & HEAD
2	DR. YAMINI PRIYA	MBBS, MS	PROFESSOR
3	DR. SHUBASHREE KARAT	MBBS, MS, FCED	ASSISTANT PROFESSOR
4	DR. WINSTON PADUA	MBBS, DNB, FVRS	ASSISTANT PROFESSOR
5	DR. NIVEDHITHA NIKHIL	MBBS, MS, FAICO	SENIOR RESIDENT
6	DR. LINETTE ANTONY	MBBS, MS	SENIOR RESIDENT
7	DR. ANNA PHILIP	MBBS, MS, DNB	SENIOR RESIDENT
8	DR. NEHA ARORA	MBBS, MS	SENIOR RESIDENT
9	DR. KEERTHANA MOGARALA	MBBS, DNB, FG	SENIOR RESIDENT

**ORTHOPAEDICS**

1.	DR. MALLIKARJUNASWAMY. B	MBBS, D'ORTHO, DNB ORTHO, MNAMS	PROFESSOR & HEAD
2.	DR. RAJKUMAR S. AMARAVATI	MBBS, DNB ORTHO, MNAMS, FRCS, FTSS	PROFESSOR
3.	DR. RAJAGOPAL H.P	MBBS, D'ORTHO, DNB	PROFESSOR
4.	DR. JOE JOSEPH CHERIAN	MBBS, MS	PROFESSOR
5.	DR. SRINIVASALU. S	MBBS, D'ORTHO, DNB, Fellow in Spine(Korea)	ASSOCIATE PROFESSOR
6.	DR. BINU T. KURIAN	MBBS, MS, MRCPS(GLASGOW) FPO (SHIFFIELD, UK)	ASSOCIATE PROFESSOR
7.	DR. MADAN MOHAN. M	MBBS, MS	ASSOCIATE PROFESSOR
8.	DR. SANDESH G.M	MBBS, MS, AOA Fellow(Australia)	ASSOCIATE PROFESSOR
9.	DR. GANESH V	MBBS, MS, Fellow in Pelvic Acetabular Trauma	ASSISTANT PROFESSOR
10.	DR. MAHESH SHEKOBA	MBBS, MS, DNB	ASSISTANT PROFESSOR
11.	DR. ANKITH N.V	MBBS, MS ,DNB, FNB SPINE	ASSISTANT PROFESSOR
12.	DR. ANOOP P	MBBS, MS, DNB	ASSISTANT PROFESSOR
13.	DR. KEVIN MATHEWS PHILIP	MBBS, MS, DNB, MRCS	ASSISTANT PROFESSOR
14.	DR. SAGAR TONTANAHAL	MBBS, MS, DNB	ASSISTANT PROFESSOR
15.	DR. AKSHAY JOHN GEORGE	MBBS, MS	SENIOR RESIDENT
16.	DR. PINTO ADITI AJOY	MBBS, MS	SENIOR RESIDENT
17.	DR. JASJEET SINGH	MBBS, MS	SENIOR RESIDENT
18.	DR. JERIN J	MBBS, MS	SENIOR RESIDENT

---

**PAEDIATRIC NEPHROLOGY**

1	DR. PRIYA PAIS	MBBS, MD, DABPN, M.Sc	PROFESSOR & HEAD
2	DR. ARPANA IYENGAR	MBBS, MD, DNB, FPN, FRCP	PROFESSOR
3	DR. ANIL VASUDEVAN	MBBS, MD, DNB, FPN	PROFESSOR
17.	DR. NIVEDITA KAMATH	MBBS, MD, DNB, FPN, DM	ASSOCIATE PROFESSOR
18.	DR. SOUMYA REDDY	MBBS, MD, DM	SENIOR RESIDENT

**PAEDIATRIC SURGERY**

1.	DR. SHUBHA A M	MBBS, MS, M.CH	PROFESSOR & HEAD
2.	DR. PRASANNA KUMAR A R	MBBS, MS, M.CH	ASSOCIATE PROFESSOR
3.	DR. KIRAN M	MBBS, MS, DNB (Gen Surg), M.CH	ASSOCIATE PROFESSOR
4.	DR. SHALINI G HEGDE	MBBS, MS, M.CH	ASSOCIATE PROFESSOR
5.	DR. RAJKIRAN RAJU S.	MBBS, MS, M.CH, DNB	ASSISTANT PROFESSOR
6.	DR. DYAN D'SOUZA	MBBS, MS	SENIOR RESIDENT
7.	DR. G. PRASSANNA VENKATESH	MBBS, MS	SENIOR RESIDENT
8.	DR. CHETAN PADASHETTY	MBBS, MS	SENIOR RESIDENT

**PAEDIATRICS**

1.	DR. CHITRA DINAKAR	MBBS, DCH, DNB, PGDAP	PROFESSOR & HEAD
2.	DR. FULTON S D'SOUZA	MBBS, MD DNB	PROFESSOR
3.	DR. MARIA LORETTA LEWIN	MBBS, DCH, DNB	ASSOCIATE PROFESSOR
4.	DR. RANJINI SRINIVASAN	MBBS, DNB	ASSOCIATE PROFESSOR
5.	DR. K SUSHMA	MBBS, DNB	ASSOCIATE PROFESSOR
6.	DR. POORNIMA R N	MBBS, DCH, DNB, FAPE	ASSISTANT PROFESSOR
7.	DR. JAINY N J	MBBS, DCH, MD, Fellowship Genetics	ASSISTANT PROFESSOR
8.	DR. NELIA MARAIAM MATHEW	MBBS, MD, FDP (Devt. Paed)	ASSISTANT PROFESSOR
9.	DR. SAURAV JAIN	MBBS, MD Fellowship in Paed.	ASSISTANT PROFESSOR
		Pulmonology	
10.	DR. ARCHANA	MBBS, MD	ASSISTANT PROFESSOR
11.	DR. NISHANT GOPAAL	MBBS, MD	SENIOR RESIDENT
12.	DR. SHILPA DOMINIC	MBBS, MD	SENIOR RESIDENT
13.	DR. SUBIN JOLLY	MBBS, MD	SENIOR RESIDENT
14.	DR. ARUSHI PUROHIT	MBBS, MD	SENIOR RESIDENT
15.	DR. TANYA SAXENA	MBBS, MD	SENIOR RESIDENT
16.	DR. PANKHUDI PRIYA	MBBS, MD	SENIOR RESIDENT
17.	DR. DEVESH BHASKAR YERRAPRAGADA	MBBS, MD	SENIOR RESIDENT

**PAEDIATRIC INTENSIVE CARE**

1	DR. LALITHA A V	MBBS, MD, DNB, FNB (Ped Critical Care), FACEE-PEM	PROFESSOR & HEAD
2	DR. YASHASWINI K	MBBS, MD, DNB, FNB (Ped Critical Care)	ASSOCIATE PROFESSOR
3	DR. CHANDRAKANT G PUJARI	MBBS, MD, Fellowship (PICU)	ASSISTANT PROFESSOR

---

**PAEDIATRIC HEMATO ONCOLOGY**

1.	DR. ANAND PRAKASH	MBBS, MD, DNB, FNB, PHO Fellowship and BMT(Sickkids, Toronto)	PROFESSOR & HEAD
2.	DR. VANDANA BHARADWAJ	MBBS, MRCPh, FRCPath, CCT (Haemtology, UK)	ASSOCIATE PROFESSOR
3.	DR. JYOTHI MUNIREDDY	MBBS, MD, DM (Paed Onco), DNB	ASSISTANT PROFESSOR
4.	DR. NAVEEN KANTH N	MBBS, MD	SENIOR RESIDENT

**PAIN & PALLIATIVE MEDICINE**

1	DR. NANDINI VALLATH	MBBS, MD, DNB, PG Dip Pall Med(Univ. Cardiff), IPPF(Univ. Wisconsin)	PROFESSOR & HEAD
2	DR. KRISHNAPRIYA V	MBBS, MD	ASSISTANT PROFESSOR

**PATHOLOGY**

1	DR. RAJALAKSHMI T	MBBS, MD, DNB	PROFESSOR & HEAD
2	DR. MARJORIE MARIA ANNE CORREA	MBBS, MD	PROFESSOR
3	DR. JULIAN ALPHONSE CRASTA	MBBS, MD, DNB	PROFESSOR
4	DR. ANURADHA ANANTHAMURTHY	MBBS, MD, M.Sc	PROFESSOR
5	DR. INCHARA Y K	MBBS, MD, DNB	PROFESSOR
6	DR. R. GAYATRI	MBBS, MD, Ph.D	ASSOCIATE PROFESSOR
7	DR. RENUKA MALIPATEL	MBBS, MD	ASSOCIATE PROFESSOR
8	DR. GNANAPRIYA V	MBBS, MD, PDCC	ASSISTANT PROFESSOR
9	DR. MARIA FRANCES BUKELO	MBBS, MD	ASSISTANT PROFESSOR
10	DR. SALONI BANSAL	MBBS, MD	SENIOR RESIDENT
11	DR. DONNA C PHILIP	MBBS, MD	SENIOR RESIDENT
12	DR. JEFFY FLORENCE BRITTO	MBBS, MD	SENIOR RESIDENT
13	DR. YUTIKA AMIN	MBBS, MD	SENIOR RESIDENT
14	DR. MEENAKSHI MAHADEVAN	MBBS, MD	SENIOR RESIDENT

**PHARMACOLOGY**

1	DR. DENIS XAVIER	MBBS, MD, M.Sc (Clin Epi)	PROFESSOR & HEAD
2	DR. PADMINI DEVI D	MBBS, MD	PROFESSOR
3	DR. ATIYA REHMAN FARUQUI	MBBS, MD	ASSOCIATE PROFESSOR
4	DR. MANGALA RAO	MBBS, MD	ASSOCIATE PROFESSOR
5	DR. DEEPAK KAMATH Y	MBBS, MD	ASSOCIATE PROFESSOR
6	DR. ANURADHA S	MBBS, MD	ASSISTANT PROFESSOR
7	DR. BHUVANA K B	MBBS, MD, DNB	ASSISTANT PROFESSOR
8.	DR. SHASHIKALA G	MBBS, MD	SENIOR RESIDENT
9.	DR. ARPITHA D	MBBS, MD	SENIOR RESIDENT

---

**PHYSICAL MEDICINE AND REHABILITATION**

1.	DR. BADARINATH ATHANI	MBBS, DNB, MS (Ortho)	PROFESSOR & HEAD
2.	DR. JAYA DAS	MBBS, MD	ASSISTANT PROFESSOR
3.	DR. IJAZ N PILLAI	MBBS, MD	ASSISTANT PROFESSOR
4.	DR. ANTONY JUDY	MBBS, MD	SENIOR RESIDENT

**PHYSIOLOGY**

1	DR. S. SUCHARITA	MBBS, MD, Ph.D	PROFESSOR & HEAD
2	DR. ANURA V KURPAD	MBBS, MD, Ph.D, FRCS, FAMS, FIUNS	PROFESSOR
3	DR. TONY DAVID SANJIV RAJ	MBBS, MD	PROFESSOR
4	DR. REBECCA KURIYAN	M.Sc, M.Phil, Ph.D	PROFESSOR
5	DR. SAVITHA. D	MBBS, MD	PROFESSOR
6	DR. SOWMYA. S	MBBS, MD	ASSOCIATE PROFESSOR
7	DR. SEJIL. T V	MBBS, MD	ASSOCIATE PROFESSOR
8	DR. ASHWINI PRIYANKA V	MBBS, MD	ASSISTANT PROFESSOR
9	DR. TANIYA ANTO	MBBS, MD, DNB	ASSISTANT PROFESSOR
10	DR. PRANATHI. R	MBBS, MD, DNB	ASSISTANT PROFESSOR
11	DR. SNEHA P. M	MBBS, MD, DNB	SENIOR RESIDENT
12	DR. VEDASHREE HEGDE	MBBS, MD	SENIOR RESIDENT
13	DR. AKANKSHA SINHA	MBBS	TUTOR

**PHYSIOTHERAPY**

1.	DR. ANIL T JOHN	MPT, Ph.D	PROFESSOR
2.	MRS. REJISHA T R	MPT (Ph.D)	ASSOCIATE PROFESSOR
3.	MR. SHANKAR GANESH	MPT (Ph.D)	ASSOCIATE PROFESSOR
4.	MR. ANTONY PAUL	MPT	ASSISTANT PROFESSOR
5.	MRS.SMITA ELIZABETH JOSEPH	MPT (Ph.D)	ASSISTANT PROFESSOR
6.	MRS. JENNIFER G V	MPT	LECTURER
7.	MS. JENNIFER V D'SOUZA	MPT	LECTURER
8.	MS. APOORVA LAXMI	MPT	LECTURER
9.	MS. NISCHITHA RAO	MPT	LECTURER
10.	MR. IMMANUEL ABRAHAM	BPT	TUTOR

**PLASTIC SURGERY**

1.	DR. SUNDER RAJ ELLUR	MBBS, MS, M.CH	PROFESSOR & HEAD
2.	DR. VIJAY T M JOSEPH	MBBS, MS, M.CH	PROFESSOR
3.	DR. ABHA RANI KUJUR	MBBS, MS, M.CH	PROFESSOR
4.	DR. NARENDRA S M	MBBS, MS, M.CH	ASSOCIATE PROFESSOR
5.	DR. NAREN	MBBS, MS, M.CH	ASSOCIATE PROFESSOR
6.	DR. NITA TRINA D'SOUZA	MBBS, MS, M.CH	ASSISTANT PROFESSOR
7.	DR. SOUPARNA MANJUNATH. M	MBBS, MS, M.CH	ASSISTANT PROFESSOR
8.	DR. JOSEPH KATTADY	MBBS, MS, M.CH	SENIOR RESIDENT

**PSYCHIATRY**

1.	DR. JOHNSON PRADEEP	MBBS, MD	PROFESSOR & HEAD
2.	DR. SUNITA SIMON KURPAD	MBBS, DPM, MRC (Psych), DNB (Psych)	PROFESSOR
3.	DR. PRIYA SREEDARAN	MBBS, DNB	ASSOCIATE PROFESSOR
4.	DR. DIVYA HEGDE	MBBS, MD	ASSOCIATE PROFESSOR
5.	DR. SALAZAR LUKE JOSHUA	MBBS, MD	ASSOCIATE PROFESSOR
6.	DR. SUHAS CHANDRAN	MBBS, MD	ASSISTANT PROFESSOR
7.	DR. BHUVANESHWARI. S	MBBS, DPM, MD	ASSISTANT PROFESSOR
8.	DR. SACHIN N	MBBS, MD	ASSISTANT PROFESSOR
9.	DR. SHALINI PERUGU	MBBS, MD	ASSISTANT PROFESSOR
10.	DR. MIRIAM JOSEPH	MBBS, MD	SENIOR RESIDENT
11.	DR. SWATI C	MBBS, MD	SENIOR RESIDENT
12.	DR. AVINASH S D	MBBS, MD	SENIOR RESIDENT
13.	DR. SHAWN SERRAO	MBBS, MD	SENIOR RESIDENT
14.	DR. MILAN VARGHESE	MBBS, MD	SENIOR RESIDENT

**CLINICAL PSYCHOLOGY**

1	DR. VIJAYA RAMAN	M.Phil, Ph.D	PROFESSOR
2	DR. UTTARA CHARI	M.Phil, Ph.D	ASSOCIATE PROFESSOR
3	DR. SYSTLA RUKMINI	M.Phil, Ph.D	ASSISTANT PROFESSOR

**PSYCHIATRY CLINICAL PSYCHOLOGY**

1	DR. RENI THOMAS	M.Phil, Ph.D	ASSISTANT PROFESSOR
---	-----------------	--------------	---------------------

**PULMONARY MEDICINE**

1	DR. GEORGE A. D'SOUZA	MBBS, MD, DNB	PROFESSOR & DEAN
2	DR. PRIYA RAMACHANDRAN	MBBS, MD, DNB	PROFESSOR & HEAD
3	DR. UMA MAHESWARI K	MBBS, MD, DM	PROFESSOR
4	DR. UMA DEVARAJ	MBBS, DNB (Internal Med), DNB (Resp Med)	PROFESSOR
5	DR. KAVITHA V	MBBS, MD, DM	ASSOCIATE PROFESSOR
6	DR. CHITRA V	MBBS, DNB	ASSISTANT PROFESSOR
7	DR. PARVATHY V	MBBS, MD	SENIOR RESIDENT
8	DR. RESHMA S BABU	MBBS, MD	SENIOR RESIDENT
9	DR. MANJARI R	MBBS, MD	SENIOR RESIDENT

**RADIATION ONCOLOGY (RADIOTHERAPY)**

1	DR. SANDEEP MUZUMDER	MBBS, MD	PROFESSOR & HEAD
2	DR. NIRMALA S	MBBS, MD	PROFESSOR
3	DR. AVINASH H.U	MBBS, MD	ASSOCIATE PROFESSOR
4	DR. SWATHI R KRISHNA	MBBS, MD	SENIOR RESIDENT
5	MR. KATHIRESSAN R P	M.Sc, Medical Physicist	ASSISTANT PROFESSOR/RSO

---

**RADIO DIAGNOSIS (RADIOLOGY)**

1.	DR. BABU PHILIP	MBBS, MD	PROFESSOR & HEAD
2.	DR. ARUN GEORGE	MBBS, MD	PROFESSOR
3.	DR. SANDEEP.S	MBBS, MD	ASSOCIATE PROFESSOR
4.	DR. SOUMYA.C	MBBS, MD, DNB	ASSOCIATE PROFESSOR
5.	DR. SAIKANTH DEEPALAM	MBBS, MD, DM (Neuroradiology)	ASSOCIATE PROFESSOR
6.	DR. NIDHI	MBBS, MD	ASSISTANT PROFESSOR
7.	DR. VIMAL CHACKO	MBBS, MD, DM (Cardiovascular Radiology)	ASSISTANT PROFESSOR
8.	DR. DEEPA SUSAN JOHN	MBBS, MD, DNB, FRCR	ASSISTANT PROFESSOR
9.	DR. ROGER ANTHONY MANUEL	MBBS, MD	ASSISTANT PROFESSOR
10.	DR. JOVIS JOHNY	MBBS, MD, DNB	ASSISTANT PROFESSOR
11.	DR. SUNITHA PALASADUDRAM	MBBS, DNB (Rad), Fellow Neuroradiology (Toronto Canada)	SENIOR CONSULTANT
12.	DR. AMBILY LIZA BABU	MBBS, MD	SENIOR RESIDENT
13.	DR. CLYDE RICHARD MENEZES	MBBS, MD	SENIOR RESIDENT
14.	DR. AISHWARYA GADWAL	MBBS, MD	SENIOR RESIDENT
15.	DR. AYUSH GUPTA	MBBS, MD	SENIOR RESIDENT

**SURGICAL ONCOLOGY**

1.	DR. RAKESH S RAMESH	MBBS, DNB(Surgery), DNB(Surg. Onco), MNAMS, FMAS, FSO	PROFESSOR & HEAD
2.	DR. MEDHA SUGARA	MBBS, MS, M.CH	ASSOCIATE PROFESSOR
3.	DR. VIJAYA LAKSHMI V. V	MBBS, MS, M.CH	ASSISTANT PROFESSOR

**TRANSFUSION MEDICINE AND IMMUNOHAEMATOLOGY**

1	DR. SHANTHALA DEVI A M	MBBS, MD	PROFESSOR & HEAD
2	DR. SITALAKSHMI S	MBBS, DCP, DNB, Ph.D	PROFESSOR
3	DR. VANAMALA ANAND ALWAR	MBBS, MD	PROFESSOR
4	DR. J. LATHA FATHIMA	MBBS, DCP, DNB	ASSOCIATE PROFESSOR
5	DR. PARIMALA PUTTAIAH	MBBS, DCP	SENIOR TUTOR
6	DR. BHAVANA VASU	MBBS, MD	SENIOR RESIDENT
7	DR. RIDDHI PARMAR	MBBS, MD	SENIOR RESIDENT

**UROLOGY**

1	DR.SURYA KANT CHOUBEY	MBBS, MS, M.CH , DNB, MNAMS (Uro)	PROFESSOR & HEAD
2	DR. CHETHAN V.N	MBBS, MS, M.CH	ASSISTANT PROFESSOR
3	DR. VIVEKANAND	MBBS, MS, M.CH	ASSISTANT PROFESSOR



---

**PARAMEDICAL COURSE CO-ORDINATORS**

1	DR. SMITHA JSM	Ph.D	ASSISTANT CO-ORDINATORS
2	MRS. JENNIFER G. VINCENT	MPT	ALLIED HEALTH SCIENCES
3	MS. APOORVA LAXMI	MPT	

**INSTITUTIONAL ETHICS COMMITTEE**

1.	DR. KARUNA RAMESHKUMAR	CHAIRPERSON
2.	MRS. KALPANA SUBRAMANYA	CO-CHAIRPERSON
3.	DR. JAYANTI SAVIO	MEMBER SECRETARY
4.	DR. PREM PAIS	MEMBER
5.	DR. JYOTHI MARIAM IDICULLA	MEMBER
6.	DR. MARY JOSEPH	MEMBER
7.	DR. JAGDISH CHINNAPPA	MEMBER
8.	DR. KAVITHA RAJARATHNA	MEMBER
9.	DR. MANJULIKA VAZ	MEMBER
10.	MR. ANIL ALBERT D'SOUZA	MEMBER

**SCINETIFIC & SAE REVIEW COMMITTEE**

11.	DR. JOHNSON PRADEEP	MEMBER
12.	DR. SAVITHA D.	MEMBER
13.	REV.DR. CHRISTOPHER VIMALRAJ HIRUTHYA	MEMBER
14.	MRS. MARTHA JAYASHREE	MEMBER
15.	MRS. NISHA C K	MEMBER
16.	DR. NANCY ANGELINE G	MEMBER

**RESEARCH SOCIETY**

1.	DR. GEORGEA. D'SOUZA	PRESIDENT
2.	DR. ANURADHA ANANTHAMURTHY	VICE PRESIDENT
3.	REV.DR. J. CHARLES DAVIS	TREASURER
4.	DR. RAMESH A	SECRETARY
5.	DR. RAO PREETHI VENKATACHALA	JOINT SECRETARY
6.	DR. KAVITHA V	EX-OFFICIO MEMBER
7.	DR. MERYL ANTONY	MEMBER
8.	DR. BHUVANA K B	MEMBER
9.	DR. MARILYN DELIGHTA	MEMBER
10.	DR. NACHIKET SHANKAR	CONVENOR RESEARCH GRANTS

**STUDENT DISCIPLINARY COMMITTEE MEMBERS**

1.	DR. GEORGEA. D'SOUZA	DEAN
2.	REV.DR. J CHARLES DAVIS	ASSOCIATE DIECTOR
3.	DR. ANURADHA ANANTHAMURTHY	VICE DEAN
4.	DR. THOMAS MATHEW	VICE DEAN
5.	DR. MARY DIAS	VICE DEAN
6.	DR. BOBBY JOSPEH	VICE DEAN
7.	DR. ARVIND KASTHURI	CHIEF OF MEDICAL SERVICES
8.	DR. PAUL VIVEK PRATURI	STUDENT'S REPRESENTATIVE, PG
9.	MR. AKSHAY AJAY	PRESIDENT, STUDENT'S ASSOCIATION

---

**PHYSICAL EDUCATION**

1 MR. RAMANJINAPPA.M M. P.Ed., M.Phil. HEAD

**PASTORAL CARE**

1 REV. FR. PETER D'SOUZA CHAPLAIN  
2. REV. FR. ROY VAILIKKODATH ASSOCIATE CHAPLAIN

**LIBRARY-ZABLOCKI LEARNING CENTRE**

1 DR. PRAKASH K M LIBRARIAN

---



---

## ADMINISTRATIVE STAFF

### CBCI SOCIETY FOR MEDICAL EDUCATION

- |    |   |   |
|----|---|---|
| 1. | REV. FR. JESUDOSS RAJAMANICKAM<br>B.Ph, B.Th, L.Th<br>EDUCATION | DIRECTOR – SJNAHS<br>SECRETARY - CBCI SOCIETY FOR MEDICAL                                   |
| 2. | REV. FR. TONY A.J   | TREASURER, CBCI SOCIETY FOR MEDICAL<br>EDUCATION<br>ASSOCIATE DIRECTOR (FINANCE),<br>SJNAHS |
| 3. | MR. PRASAD MUKKANTI   | FINANCE OFFICER   |
| 4. | MR. STEVEN D'SOUZA  | SUPERINTENDENT - ACCOUNTS   |
| 5. | MRS. SOPHIA HEERA JOHN  | EXECUTIVE SECRETARY   |

### ST. JOHN'S MEDICAL COLLEGE

- |   |                          |   |                                      |
|---|--------------------------|---|--------------------------------------|
| 1 | REV. DR. J CHARLES DAVIS | PH.D &<br>HABILITATION<br>(BIOETHICS,<br>GERMANY) | ASSOCIATE DIRECTOR (ADC)             |
| 2 | MRS. DIVYA THERESA       |   | SECRETARY TO ADC                     |
| 3 | MR. ROSHAN NORONHA       |   | SR. SUPERINTENDENT, ACADEMIC SECTION |
| 4 | MR. ALBY JOHN            |   | SUPERINTENDENT, ACCOUNT SECTION      |
| 5 | MRS. GRACY NORONHA       |   | EXECUTIVE SECRETARY TO THE DEAN      |

### ST. JOHN'S MEDICAL COLLEGE HOSPITAL

- |     |                        |                         |                                     |
|-----|------------------------|-------------------------|-------------------------------------|
| 1.  | REV. DR. JOHN VARGHESE | MHA, MHRM, M.PHI, PH.D  | ASSOCIATE DIRECTOR                  |
| 2.  | DR. ARVIND KASTHURI    | MBBS, MD, DNB,<br>PGDGM | CHIEF OF MEDICAL SERVICES           |
| 3.  | SR. RIA EMMANUEL       | M.SC. (NSG.)            | CHIEF OF NURSING SERVICES           |
| 4.  | MRS. EUGIN P ALEXANDER | M.SC. (NSG.)            | NURSING SUPERINTENDENT              |
| 5.  | MRS. SARA OOMMEN       | M.SC. (NSG.)            | NURSING SUPERINTENDENT              |
| 6.  | MRS. SUGANDHI D'SOUZA  | M.SC. (NSG.)            | NURSING SUPERINTENDENT              |
| 7.  | MR. SEN P J            | MAHRM, MHA              | MANAGER - HR                        |
| 8.  | MR. COL SHIVA T M.     |                         | GM ENGG. & FACILITY<br>MANAGEMENT   |
| 9.  | DR. SITALAKSHMI S      | MBBS, DCP, DNB,<br>PH.D | ASSOCIATE MEDICAL<br>SUPERINTENDENT |
| 10. | DR. MANJULA DEVI M     | MBBS, DA, DNB           | ASSOCIATE MEDICAL<br>SUPERINTENDENT |
| 11. | DR. MERYL ANTONY       | MBBS, MD, DNB           | ASSOCIATE MEDICAL<br>SUPERINTENDENT |
| 12. | DR. BELINDA GEORGE     | MBBS, MD, DM            | ASSOCIATE MEDICAL<br>SUPERINTENDENT |

### ST. JOHN'S COLLEGE OF NURSING

- |   |                            |                 |                     |
|---|----------------------------|-----------------|---------------------|
| 1 | REV. SR. SAJITHA MOOTHEDAN | M.SC. NSG       | PRINCIPAL           |
| 2 | DR. SR. PRASADA            | M.SC. NSG, PH.D | VICE PRINCIPAL - UG |
| 3 | DR. BINDHU MATHEW          | M.SC. NSG, PH.D | VICE PRINCIPAL - PG |

---

**ASSOCIATE DIRECTOR FINANCE**

- |    |                       |                    |  |
|----|-----------------------|--------------------|--|
| 1. | REV. FR. TONY AJ      | BA, B.Th, B.Ph, MA | ASSOC. DIRECTOR FINANCE &<br>TREASURER CBCI SOCIETY FOR<br>MEDICAL EDUCATION |
| 2. | MR. S.S. PATIL        |                    | PROJECT MANAGER  |
| 3. | MRS. MARTHA JAYASHREE |                    | LEGAL OFFICER  |
| 4. | MR. ANTHONY PREM      |                    | GENERAL MANAGER, IT (DiCE)   |

**ST. JOHN'S RESEARCH INSTITUTE (SJRI)**

- |   |                     |                |           |
|---|---------------------|----------------|-----------|
| 1 | DR. TONY D.S. RAJ   | MBBS, MD       | DEAN      |
| 2 | DR. PREM KUMAR MONY | MBBS, MD, M.SC | VICE-DEAN |

**MEDICAL STUDENTS HOSTEL**

- |     |                          |                       |
|-----|--------------------------|-----------------------|
| 1.  | REV. DR. J CHARLES DAVIS | CHIEF WARDEN          |
| 2.  | MR. JOHN MICHAEL RAJ A   | ASST. WARDEN          |
| 3.  | MR. SANKAR GANESH        | ASST. WARDEN          |
| 4.  | DR. SEJIL TV             | ASST. WARDEN          |
| 5.  | DR. SANTU GHOSH          | ASST. WARDEN          |
| 6.  | MR. JOSHVAN DSOUZA       | ASST. WARDEN          |
| 7.  | MR. HIMANTH SUNKARA      | ASST. WARDEN          |
| 8.  | SR. CLARIN D'SOUZA       | ASST. WARDEN          |
| 9.  | MS. KARISHMA CHAUHAN     | ASST. WARDEN          |
| 10. | SR. JESSIE SALDANHA      | ASST. WARDEN          |
| 11. | SR. JULIANA PEREIRA      | ASST. WARDEN          |
| 12. | SR. VIMAL JOSE           | ASST. WARDEN          |
| 13. | SR. ELIZABETH PAUL       | ASST. WARDEN          |
| 14. | SR. ALPHONSA JYOTHI      | IN-CHARGE, ANNEXE III |

---

**SCHOLARSHIPS**

*The college awards the following scholarships each year; these are regulated by the rules prescribed in each individual case*

**SCHOLARSHIPS FOR MBBS STUDENTS**

S.No.	Name of the Award	Founded By	Awarded to	Eligibility Rules
UG-01	The Cardinal Gracias Scholarship	The Catholic Schools of Bombay, on the occasion of the conferment of the national title of 'Padma Vibhushan' on His Eminence Valerian Cardinal Gracias, who was the first President of the C.B.C.I. Society for Medical Education in 1966	Two MBBS students	Awarded annually to MBBS students on a means-cum-merit basis
UG-02	The Dean Louis Monteiro Scholarship	In the Silver Jubilee Year, by Dr. Marguerite Pinto, Alumna of Batch 1964, in honour of her father	MBBS student	Awarded annually to a student on a means-cum-merit basis
UG-03	Rev. Fr. F.N. Loesch, S.J., Memorial Scholarship	The management of St. John's Medical College	A newly admitted MBBS student	Awarded to a newly admitted MBBS student on merit- cum-means basis. This scholarship is tenable subject to satisfactory conduct and progress throughout the 1st M.B.B.S. Course.
UG-04	Karnataka Region Catholic Bishops' Scholarship	Fr. Ignatius Pinto, former Secretary of the Karnataka Region Catholic Bishops' Council	Catholic MBBS student of Karnataka	Awarded on Merit-cum-means basis, to a Catholic student of Karnataka. This Scholarship is tenable subject to the marks secured at the qualifying examination, if any, conducted by the University, as well as the conduct and behaviour of the applicant.
UG-05	Fr. John P.M. van der Ploeg's Golden Jubilee 1982 Scholarship		Religious Sister MBBS Student.	A Religious Sister Medical Student.
UG-06	The SJMC Alumni Association Scholarship	The Executive Committee of the SJMC Alumni Association in 1991	Two Scholarships for MBBS students	Awarded to two MBBS students on a merit-cum-means basis each year.
UG-07	The SJMC Parents Association Scholarship	SJMC Parents' Association in 1991	MBBS Student	MBBS Student on a merit-cum-means basis each year.

S.No.	Name of the Award	Founded By	Awarded to	Eligibility Rules
UG-08	Mr. Thomas Putti Memorial Scholarship	Dr. Joseph Putti in 1991	Undergraduate or Postgraduate student	Undergraduate or Postgraduate student of St. John's Medical College on merit-cum-means basis each year, with additional weightage to those who show keen interest in Cancer Research
UG-09	The Smt. Kamalamma Narayana Iyer Scholarship	Dr. A.N. Balasundaramin1992	Female MBBS Student	One female MBBS Student on a merit-cum-means basis each year.
UG-10	The A.G. Narayan Iyer Scholarship	Dr. A.N. Balasundaramin1992	Male MBBS Student	One male MBBS Student on a merit-cum-means basis each year.
UG-11	Dr. F.H. Noronha Scholarship	By the will of Mrs. Cecilia Franco in 1993	MBBS Student	MBBS Student on a merit-cum-means basis each year.
UG-12	Dr. A. Yesupriya Scholarship	Alumni of Batch 1968 & Dr. Yesupriya's family in 1993	MBBS Student	MBBS Student on a merit cum-means basis each year.
UG-13	Peter Menezes Scholarship	Mrs. Brice Menezes in 1994 in Memory of her husband.	Two scholarships for MBBS students	Two MBBS students on a merit-cum-means basis each year.
UG-14	Dr. Sr. Mary Glowery JMJ-CHAI Scholarship	The Catholic Health Association of India in 1995	Two scholarships for MBBS students	Two MBBS students on a merit-cum-means basis each year.
UG-15	Ms. Louise Rebello Scholarship	Ms. Louise Rebello in 1995	MBBS student	One MBBS student on a merit-cum-means basis each year.
UG-16	Dr. Charles D'Souza Scholarship	Dr. Santhosh Prabhu, Aluminus of Batch of 1973 in honour of his father	One MBBS student	One MBBS student on a merit-cum-means basis
UG-17	Bishop Sebastian Mankuzhikary Memorial Scholarship	The Bishop Sebastian Mankuzhikary Memorial Trust set up by the immediate family of the late Bishop Sebastian Mankuzhikary in 1997	One MBBS student	One MBBS student on merit-cum-means basis
UG-18	Mohan Peter Family Scholarships	Dr. Mohan Peter, alumnus of batch 1963 in 1998	Four Scholarships for MBBS students	4 MBBS students on merit-cum-means basis.
UG-19	Mr. Michael Menezes & Mrs. Lily Menezes Scholarship	Dr. Marian Menezes in memory of his parents	Medical Student	Deserving undergraduate Medical Student.
UG-20	Richard Alphonsus Miranda Scholarship	Mrs. Brice Menezes in 2007	MBBS lay student	MBBS lay student on merit-cum-means basis.

S.No.	Name of the Award	Founded By	Awarded to	Eligibility Rules
UG-21	Dr. Frank Noronha Scholarship	Mr. Clement Silva in 2015	MBBS graduate	A deserving undergraduate Medical Student
UG-22 AA	Dr. Thomas Chandy Scholarship	Dr. Thomas Chandy	1st MBBS student (Entry level )	Entry level MBBS student on means basis
UG-23 AA	Women in Sports Scholarship	Dr. Carol D 'Souza, an alumna of St. John's Medical College.	Female MBBS student	A female MBBS student with good academic background, economic need and achievement in sports
UG-24	Dr. M.A. De Heredia Scholarship		One MBBS Student	Merit cum means basis
UG-25	Dr. Anil Rajesh Dung Dung Memorial Scholarship	MBBS Batch of 1991	One MBBS student of Tribal, Dalit or North Indian Native Catholic	Merit cum means basis
UG-26 AA	SJMC Alumni Associates EC 2018 Scholarship (3 year committed)	Executive Committee of 2018 Alumni Association	Two 2nd MBBS student for 3 consecutive years	Merit cum means basis
UG-27	FOSJ/SJMCAA NA Medical Student Scholarship	Friends of St. Johns, USA & SJMC Alumni Association North American Chapter	Three MBBS Students	Merit cum means basis
UG-28	Dr. Ajoy Rao Bhardwaj Scholarship	Mr. Suresh N Rao Father of Dr. Ajoy Rao Bharadwaj	Female MBBS Student	Merit cum means basis
UG-29	Mr. Michael & Mrs. Lilly Menezes Scholarship	Dr. Lynette & Dr. Marian in memory of parents Michael & Lilly Menezes	MBBS Student full tuition fee	Merit cum means basis
UG-30	St. John's Medical College Management Scholarship	St. John's Medical College Management	Three Scholarships for MBBS Student	Merit cum means basis
UG-31	The SJMC MBBS Batch of 1979 Scholarship for 1st MBBS student (4 year committed)	MBBS Batch of 1979 (Entry level)	1st MBBS Student	Merit cum means basis
UG-32	The SJMC MBBS Batch of 1994 Silver Jubilee Scholarship for 2nd MBBS student (4 year committed)	MBBS Batch of 1994	2nd MBBS Student	Merit cum means basis
UG-33	Monica and Sunil Babu (Batch 1990)/ FOSJMC Scholarship	Dr. Sunil Babu	MBBS Student	Means cum merit basis
UG-34	Drs. Philomena and Charles Peris Scholarship	Dr. Jovita Crasta (Batch 1974) in memory of her parents Drs. Philomena and Charles Peris	MBBS Student	Means cum merit basis



<b>S.No.</b>	<b>Name of the Award</b>	<b>Founded By</b>	<b>Awarded to</b>	<b>Eligibility Rules</b>
UG-35	Dr. Mary Ollapally Scholarship Fund Batch 1963/FOSJMC		MBBS Student	Means cum merit basis
UG-36	“Selina and Joseph Thuluvath Memorial Scholarship”	Dr. Paul Thuluvath	MBBS Student	Means cum merit basis
UG-37	“Reeja and Paul Thuluvath Scholarship”	Dr. Paul Thuluvath	MBBS Student	Means cum merit basis

**SCHOLARSHIPS FOR POSTGRADUATE MEDICAL STUDENTS**

*The college awards the following scholarships each year; these are regulated by the rules prescribed in each individual case*

S.No.	Name of the Award	Founded By	Awarded to	Eligibility Rules
PG-01	The SJMC Alumni Association Scholarship	The Executive Committee of the SJMC Alumni Association in the year 1992	TWO Medical Postgraduate Students	Merit-cum-means basis each year.
PG-02	The Prof. A.N. Radhakrishnan Scholarship	Dr. A.N. Balasundaram	ONE Medical Postgraduate Student	Merit-cum-means basis each year
PG-03	Mr. Thomas Putti Memorial Scholarship	Dr. Joseph Putti in the year 1991	Under-graduate or Post-graduate student of St. John's Medical College	Merit-cum-means basis each year, with additional weightage to those who show keen interest in Cancer Research
PG-04	Dr. R. Chavrimootoo Scholarship	Dr. R. Chavrimootoo, 1967 Batch Alumnus in the year 1992	Postgraduate Student	Merit-cum-means basis each year.
PG-05	Peter Menezes Scholarship	Mrs. Brice Menezes, in memory of her husband in the year 1994	TWO Medical Postgraduate Students.	Merit-cum-means basis each year
PG-06	Dr. Sr. Mary Glowrey JMJ-CHAI Scholarship	The Catholic Hospital Association of India	ONE Medical Postgraduate student	Merit-cum-means basis each year.
PG-07	Ms. Louise Rebello Scholarship	Ms. Louise Rebello in the year 1995	ONE Postgraduate student	Merit-cum-means basis each year.
PG-08	1991 Batch of MBBS Students' Scholarship	1991 batch of MBBS students	Postgraduate student	Merit-cum-means basis each year
PG-09	Mohan Peter Family Scholarships	Dr. Mohan Peter, Alumnus of Batch 1963	THREE Postgraduate students	Merit-cum-means basis each year
PG-10	Paul Francis Mookan Memorial Scholarship	1987 batch MBBS students and Dr. Paul Francis Mookan's Family	ONE Post Graduate student	Merit-cum-means basis each year
PG-11	1993 Batch of MBBS Students' Scholarship	1993 batch of MBBS students	ONE Post Graduate student	Merit-cum-means basis each year
PG-12	C.B.C.I Society for Medical Education Scholarship	Governing Board of the C.B.C.I. Society for Medical Education in the year 2003.	ONE P.G. Student	Merit-cum-means basis
PG-13 AA	SJMC Alumni Association EC 2018 Scholarship (3 year committed)	Executive Committee of 2018 Alumini Association	1st Year PG Student	Merit-cum-means basis

S.No.	Name of the Award	Founded By	Awarded to	Eligibility Rules
PG-14 AA	Dr. Mary Ollappally Memorial Scholarship	Alumni Association & Well wishers of Dr. Mary Ollappally former Dean, SJMC Alumnus	PG Student with priority for Anaesthesia	Merit-cum-means basis

---

**SCHOLARSHIPS FOR ALLIED HEALTH SCIENCES STUDENTS**

*The college awards the following scholarships each year; these are regulated by the rules prescribed in each individual case*

<b>S.No.</b>	<b>Name of the Award</b>	<b>Founded By</b>	<b>Awarded to</b>	<b>Eligibility Rules</b>
MLT- 01	C.B.C.I. Society for Medical Education Scholarship	The Governing Board of the CBCI Society for Medical Education in 2000	One MLT student	Merit-cum-means basis
AHS- 02	AHS Student Support scholarship fund for B.Sc & BPT	St. John's Medical College	B. Sc and BPT student	Merit-cum-means basis
AHS- 03	St. John's Medical College Management Scholarship for AHS B.Sc	St. John's Medical College Management	5 Scholarships for B. Sc Students	Merit-cum-means basis
AHS- 04	St. John's Medical College Management Scholarship for AHS BPT	St. John's Medical College Management	1 Scholarship for BPT Students	Merit-cum-means basis

### AWARDS & PRIZES FOR MBBS STUDENTS

*The college awards the following prize each year; these are regulated by the rules prescribed in each individual case*

S NO.	Name of the Award	Founded By	Awarded to	Eligibility Rules
A-1	Pope Paul VI Prize and Medal	His Holiness Pope Paul VI in 1965 on the occasion of laying of the corner stone of the College Project -38th International Eucharistic Congress	MBBS graduate.	Best outgoing MBBS graduate
A-2	Dr. and Mrs. Menino D'Souza Award		One male and One female MBBS graduate on completion of internship for all round performance	Based on the all-round performance during the last two years of M.B.B.S. studies and internship done in this Institution.
A-3	Archbishop Thomas Pothacamury Memorial Prize	The Governing Body on the recommendation of the first Dean, Dr. L. Monteiro	Best Religious MBBS student	Best Outgoing Religious student from amongst the Priests, Religious Sisters & Brothers
A-4	Cardinal Gracias Ethics Prize	The Catholic Schools of Bombay in honour of His eminence Valerian Cardinal Gracias in 1970	MBBS student Term V & Term VII	Two prizes for Ethics
A-5	The Dean Louis and May Monteiro Prize	The Governing Body in recognition of the service of Dean Louis Monteiro	A member of the staff of St. John's Medical College, Bengaluru, and its affiliated hospitals of the rank of Assistant Professors and below	The best research work in any field of Medicine, and allied subjects which has been accepted for publication in a recognized journal.
A-6	Pio and Arinda Monteiro Memorial Prize in Pathology	The Governing Body on the recommendation of Dr. L. Monteiro in memory of his parents	MBBS Student for Pathology	The student obtaining the highest marks in Pathology at a Competitive Examination held by the College.
A-7	Joseph Saldanha MEMORIAL PRIZE IN Microbiology	The Governing Body on the recommendation of Dr. L. Monteiro in memory of his Brother-in-law	MBBS student for Microbiology	The student obtaining the highest marks in Microbiology at a Competitive Examination held by the College.

S NO.	Name of the Award	Founded By	Awarded to	Eligibility Rules
A-8	Catholic Medical Guild of St. Luke, Bombay Prize	The Catholic Medical Guild of St. Luke, Bombay in 1968	MBBS student for III MBBS Examination.	The student passing the 3rd MBBS Examination on the first attempt, and standing first among the students of the College in the Examination.
A-9	Smt. Aleyamma Thanangatt Memorial Prize	Mr. J.J. Thomas, M/s. Gina Engineering Company, Bangalore, in memory of his mother in 1977	MBBS student for - Ophthalmology	The student obtaining the highest marks, and standing first in the College, in Ophthalmology, at the first attempt, at the regular University Examination.
A-10	Dr. Fred and Domitilla Saldanha Memorial Prize	Late Mrs. Domitilla Saldanha of Pune, in memory of her husband 1965	MBBS Student for I MBBS Examination	The student passing the regular 1st MBBS Examination and standing first among the students of the College in the Examination.
A-11	Bishop Alphonsus Mathias Prize	Rt. Rev. Alphonsus Mathias 1981	MBBS student for Microbiology	The student passing the regular 2nd MBBS Examination at the first attempt, and standing first among the Students of the College in Microbiology.
A-12	The Paul Abrao Memorial Prize	Paul Abrao Memorial Charitable Trust, Cochin, in memory of the late Dr. Paul Abrao in 1969	MBBS student for Forensic Medicine	The student passing the regular 2nd MBBS Examination at the first attempt, and standing first among the students at the College in Forensic Medicine.
A-13	Dr. Hasmukh J. Mehta Memorial Prize	Students of the first M.B.B.S. Class 1973-74 batch, & Dr. Prashant H. Mehta, in memory of his father 1973	MBBS student/intern for a project	Undergraduate student/intern whose work is adjudged to be the best for the year, either as an individual or as a joint project.
A-14	The Major-General S.L. Bhatia Prize		MBBS student for Physiology	The student passing the regular 1st MBBS Examination at the first attempt, and standing first among the students of the College in Physiology.
A-15	Dr. N.K. Apte Prize of the A.O.I.	The A.O.I. and the Dept. of E.N.T. SJMCH	MBBS student for ENT	The student obtaining the highest marks in a competitive examination in E.N.T. held by this Institution.

S NO.	Name of the Award	Founded By	Awarded to	Eligibility Rules
A-16	Astra Idl Prize	M.I.T. Laboratories, Bangalore in 1980	MBBS student for Pharmacology	The student obtaining the highest marks in Pharmacology at a competitive examination held by the College.
A-17	Dr I.M. Thomas Prize for Excellence in Anatomy	Dr. G. Thomas in 1990	MBBS student for Anatomy	The student obtaining the highest marks in Anatomy in both internal assessment & at the university examination.
A-18	Ram Narain Dhawan Urology Award	Mr. Kushal Dhawan in 1990	Final MBBS for Urology	The student of the Final Year batch on the basis of performance at a special examination conducted by the Urology department.
A-19	The Dr. F.H. Noronha Award	Late Mrs. Cecilia Franco in her Last Testament	Best MBBS Student	To the BEST MBBS Student each year.
A-20	The Martha Mary Pinto Prize	Drs. Celine and Lawrence Lobo in 1991	Final MBBS student for Obstetrics and Gynaecology	The Final MBBS student securing the highest marks in Obstetrics and Gynaecology at the University Examination each year
A-21	Bactroban Prize	Smith Kline Beecham Pharmaceuticals in 1995	MBBS student for Dermatology	An MBBS student who secures the highest marks at a competitive examination conducted by the Department of Dermatology.
A-22	P. Manjunath Nayak Memorial Award	Eros Pharma Pvt. Ltd in 1995	MBBS student for Biochemistry	MBBS student passing Biochemistry at the first attempt and securing the highest marks among the students of the College.
A-23	Dr. Carlton Tavares Award	Dr. Carlton Tavares, Aluminus St. John's 2012	MBBS Student winner in the Interclass cultural	Awarded to MBBS student winner in the Interclass cultural
A-24	Cadila Health Care Prize	Cadila Health Care in 1998	Final MBBS student for General Surgery	Final MBBS student securing the highest marks in a special examination conducted by the General Surgery Department.
A-25	Rev. Dr. Percival Fernandez Prize	Rev. Dr. Percival Fernandez in 2000	MBBS student for Best Sports Person	Awarded to Best Sports Person of the Year among the Medical College Students



S NO.	Name of the Award	Founded By	Awarded to	Eligibility Rules
A-26	St. John's Medical College Hospital Silver Jubilee- Bank of Baroda Prize	Bank of Baroda, SJMC Campus Branch in 2001	Final year MBBS student for Community Medicine	The final year MBBS student who scores highest marks in Community Health.
A-27	Smt. & Sri. Joji Reddy Thumma Memorial Prize in Pharmacology	Dr. Kasapareddy Thumma and Family members in 2001	MBBS student for Pharmacology	The student with the highest marks in Pharmacology in the University Examination.
A-28	Annual Awards for Outstanding Rural Service	The Governing Board of the C.B.C.I. Society for Medical Education in 1998	Two prizes are awarded to One lay doctor & One religious sister doctor alumnae/ni of this Institution.	One lay doctor and one Religious Sister Doctor Alumine/ ni of this institution for outstanding rural service.
A-29	The J. Vaz Memorial Prize in the History of Medicine	Dr. Mario Vaz, Department of Physiology, SJMC in memory of his father in 2002	II MBBS students for History of Medicine	In the History of Medicine for an open Essay.
A-30	Mrs. Lititia Misquith Awards - 3 Awards	Dr. Felix Misquith in 2003	3 Awards for I, II and III MBBS students	Catholic student who passes the University Exam of 1st, 2nd and 3rd MBBS at first attempt and gets the highest number of total marks.
A-31	Dr. Chitra Stephen Solomon Memorial Award	Mr. Solomon Ravikumar in 2004	MBBS for Community Medicine	Best outgoing MBBS student in Community Health.
A-32	Mrs. Annamma Antony Athiparampil Prize	Dr. Serene Annie Francis of 1998 batch, in memory of her grandmother in 2004	MBBS student for General Medicine	MBBS student passing General Medicine at first attempt and securing highest marks among students of St. John's Medical College.
A-33	Dr. R.C. Nadig Memorial Prize	The SJMC Faculty and Alumni who were associated with Dr. R.C. Nadig in 2006	Phase III Part I MBBS student	Student securing highest marks in Ophthalmology in the prize examination conducted by the Department of Ophthalmology.
A-34	Dr. Kalpana Rao Prize	In memory of Dr. Kalpana, by Dr. K.B. Gururaj Prasad, brother of Dr. Kalpana Rao, and mother Mrs. B.S. Vedavati and members of her family in 2008	MBBS student for Biochemistry.	MBBS student for securing highest marks in the University exam in Biochemistry.

S NO.	Name of the Award	Founded By	Awarded to	Eligibility Rules
A-35	Rev. Dr. Thomas Kalam Prize	Rev. Dr. Thomas Kalam in 2009	MBBS student for the best research project	Best research project carried out by an MBBS student during the year.
A-36	Mrs.& Mr. G.G.Kini Prize for Excellence in Pathology’.	Dr. Usha Kini, Professor & former Head, Department of Pathology, St. John’s Medical College, in honour of her parents in 2010	MBBS student for Pathology	MBBS student obtaining highest marks in Pathology in both internal assessment and at the University examination.
A-37	Spirit of’ St. John ‘s Paediatric UG Prize	Batch of 1981	UG (MBBS) Student	UG Student standing first in the theory and clinical examination held in the Paediatric Department.
A-38	Dr. Mathew Ollapally Prize	Dr. Mary M. Ollapally	Medical and Nursing students, Postgraduates and junior doctors in Pain & Palliative care	Conducted for Medical and Nursing students, PGs and Junior doctors in a Pain and Palliative care examination.
A-39	Dr. Sylvan John Rego Award in Paediatrics	Batch of 1981	MBBS Student for Paediatrics	MBBS Student standing first in examination held in the Paediatric Department.
A-40	Lakshmeswar Nagraj Memorial Prize in Surgery	Dr. L. N Mohan	MBBS Student for General Surgery	MBBS Student standing first in the final examination in General Surgery
A-41	Dr. Neela Pandit Memorial Undergraduate prize in Paediatrics	Dr. P.N. Pandit husband of Dr. Neela Pandit	MBBS Student for Paediatrics	Awarded for obtaining highest marks in the Competitive Examination in Paediatrics
A-42	St. John’s Medical College Dr. K. Srinivasan Best Outgoing undergraduate student in Psychiatry Award	Dr. K. Srinivasan	MBBS Student for Psychiatry	Awarded for obtaining highest score of the two end of posting exams, following the psychiatry clinical postings in 2nd professional and 3rd professional part 1 years.
A-43	“Biju Mercy Siju Prize in Reflection Narratives”	Mr. Siju Thomas Panicker in conjunction with the Health and Humanities Division, SJRI	Undergraduate / Post Graduate Medical Students	Best reflective narrative/essay/poem depicting empathy/introspection/insights within encounters, observations and experiences

S NO.	Name of the Award	Founded By	Awarded to	Eligibility Rules
A-44	“Biju Mercy Siju Memorial Prize for Social Consciousness”	Mr. Siju Thomas Panicker in conjunction with the Health and Humanities Division, SJRI	Any member of the Academy (SJNAHS)	<p>CATEGORY A-Individuals who embody social consciousness through their work- nominated by a peer, colleague or department</p> <p>CATEGORY B -Creative works that promote social consciousness submitted by individuals in the form of paintings, narratives, poetry, photography, dance / drama etc.</p>

### AWARDS FOR POSTGRADUATE MEDICAL STUDENTS

*The college awards the following prize each year; these are regulated by the rules prescribed in each individual case*

S NO.	Name of the Award	Founded By	Awarded to	Eligibility Rules
1.	Rev. Dr. Percival Fernandez Award	Dr. Percival Fernandez in the year 2000.	One Medical Postgraduate student	All Round Best Outgoing Post Graduate of the Year in the Medical College.
2.	Dr. Reddy's Laboratories Prize	Dr. Reddy's Laboratory in the year 1999	TWO Post Graduate Students - one in General Medicine and one in Obstetrics & Gynaecology	Who secure the highest marks in a special prize examination conducted by the Department for the outgoing graduates.
3.	Mrs. Vanaja Nagendran & Mr. K.TI Shivalingaiah Memorial Gold Medal	Dr. Radhika Dhanpal & Dr. Savitha K.S. in memory of their parents	ONE Postgraduate student	Best out- going postgraduate student in Anesthesiology each year.
4.	Dr. Arun Kilpadi Prize	Dr. Arun Kilpadi	Final year P.G. Student in M S General Surgery	Final year P.G. Student in M S General Surgery who stands first in a Prize Examination to be conducted 6 months prior to the final M S General Surgery Examination.
5.	Dr. R B Galgali Prize	Dr. R. B Galgali	Final year P.G. Student in Psychiatry	Best outgoing student in Psychiatry
6.	Prof. K. N Sharma Prize	Department of Physiology	Final year P.G. Student in Physiology	Best outgoing student in Physiology
7.	Dr A K Roy Award in Neurology	Dr A. K. Roy	Post Doctoral Student in DM Neurology	Student standing first in the examination held by the University
8.	Dr. Sylvan Rego Award in Paediatrics	Batch of 1981	Final year P.G. Student in Paediatrics	Student standing first in the MD Paediatrics examination held by the University

**AWARDS FOR ALLIED HEALTH SCIENCES STUDENTS  
GRADUATE & POSTGRADUATE PROGRAMMES**

*The college awards the following prize each year; these are regulated by the rules prescribed in each individual case*

S NO.	Name of the Award	Founded By	Awarded to	Eligibility Rules
1.	C.B.C.I. Society for Medical Education Prize	The Governing Board of the CBCI Society for Medical Education in 2000	B.Sc. Renal Dialysis student	Best outgoing B.Sc. Renal Dialysis student
2.	C.B.C.I. Society for Medical Education Prize	The Governing Board of the CBCI Society for Medical Education in 2000	B.Sc. Medical Imaging Technology	Best outgoing B.Sc. Medical Imaging Technology student
3.	C.B.C.I. Society for Medical Education Prize	The Governing Board of the CBCI Society for Medical Education in 2000	B.Sc. Perfusion Technology	Best outgoing B.Sc. Perfusion Technology student
4.	C.B.C.I. Society for Medical Education Prize	The Governing Board of the CBCI Society for Medical Education in 2000	B.Sc. Medical Laboratory Technology	Best outgoing B.Sc. Medical Laboratory Technology student
5.	Mrs. & Mr. G.G. Kini Prize for Excellence in Pathology	Dr. Usha Kini, Professor and former Head, Department of Pathology, St. John's Medical College, Bangalore	Outgoing B. Sc. MLT student	Best outgoing B. Sc. MLT student obtaining the highest marks in Pathology in all 3 years at University Examination
6.	Teruma Penpol Award	Teruma Penpol Ltd., in 2008	M.Sc.,MLT (Haematology and Transfusion Medicine)	Best outgoing student in M.Sc.,MLT (Haematology and Transfusion Medicine)
7.	BD India Pvt. Ltd. Award	Becton and Dickenson India Pvt. Ltd. In March 2010	TWO M,Sc., MLT students one each from Microbiology & Immunology and Clinical Biochemistry	TWO most meritorious students, one each from M.Sc. MLT Microbiology& Immunology and Clinical Biochemistry.