

# nbha

New Braunfels Housing Authority  
300 Laurel Ln, New Braunfels, TX 78130  
Ph 830-625-6909 ■ Fax 830-625-6915 ■ www.nbhatx.us

ADDENDUM NO. 1  
RFQ# 2023 – 0001

**The response date for submission of the Request For Qualifications is hereby extended to Friday, January 19, 2024.**

The following questions have been asked:

**Question 1:** The Google Site Location map on page 20 of the RFQ includes a white border identifying the Villa Serena. The border excludes the existing Villa Serena duplexes and community center on the southern side of Rosa Parks Drive. We would like to confirm if the duplexes and community center located south of Rosa Parks Drive will also be included in the Villa Serena Public Housing Site?

Answer 1: The Villa Serena site includes the community center. See corrected map below:



**Question 2:** Provided the NBHA's office is located on the Laurel Plaza site and attached to the existing Laurel Plaza apartments, please confirm if the NBHA would like the

# nbha

New Braunfels Housing Authority

300 Laurel Ln, New Braunfels, TX 78130

Ph 830-625-6909 ■ Fax 830-625-6915 ■ www.nbhatx.us

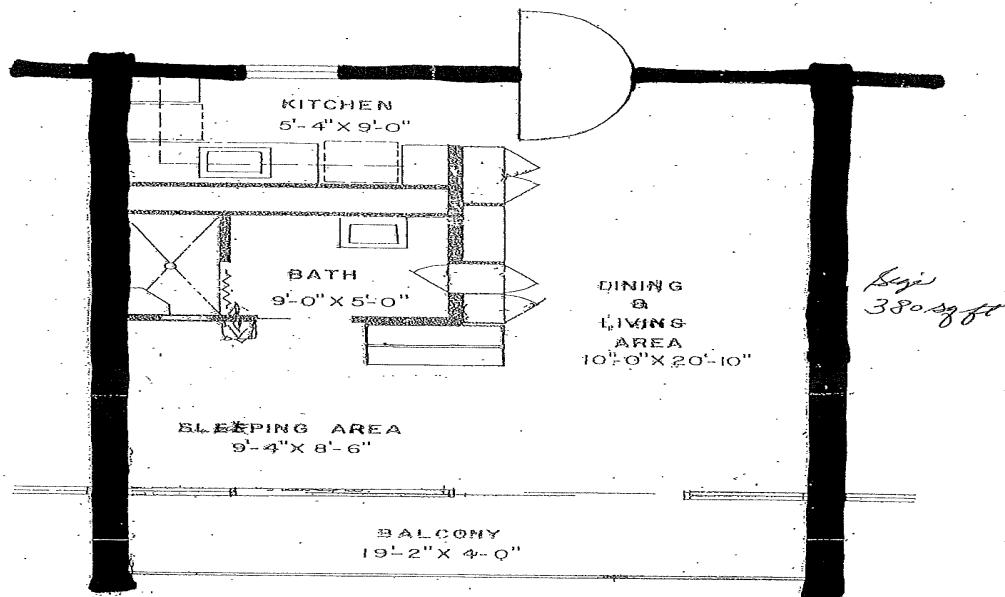
developer partner to propose a new NBHA office in the overall development scope. If so, please provide an approximate size and any additional development requests or requirements.

**Answer 2:** NBHA currently has offices at 300 Laurel Lane, New Braunfels, TX 78130. NBHA employs 12 fulltime employees. NBHA defers to the Developer's expertise as to how to facilitate office space for its administrative purposes.

**Question 3:** Please provide interior photos and conditional documentation of the Laurel Lane Apartments building.

**Answer 3:** The following information is provided:

Laurel Lane Floor Plan:



## TYPICAL EFFICIENCY UNIT

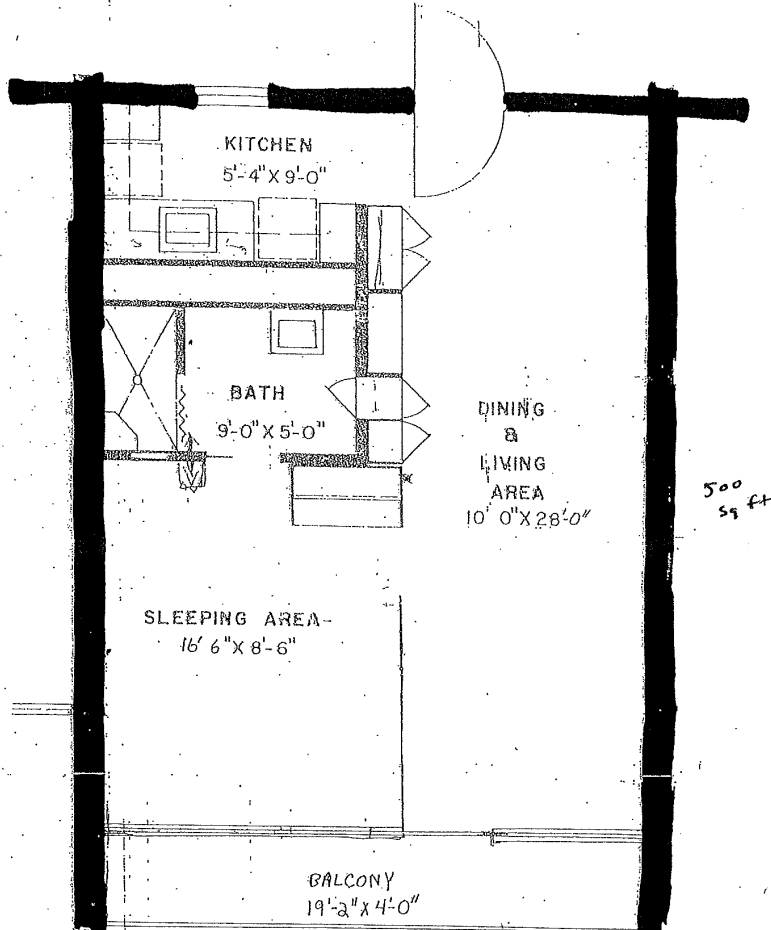
HOUSING AUTHORITY OF THE CITY OF NEW BRAUNFELS

# nbha

New Braunfels Housing Authority

300 Laurel Ln, New Braunfels, TX 78130

Ph 830-625-6909 ■ Fax 830-625-6915 ■ www.nbhatx.us



## TYPICAL ONE BEDROOM UNIT

HOUSING AUTHORITY OF THE CITY OF NEW BRAUNFELS

(size)

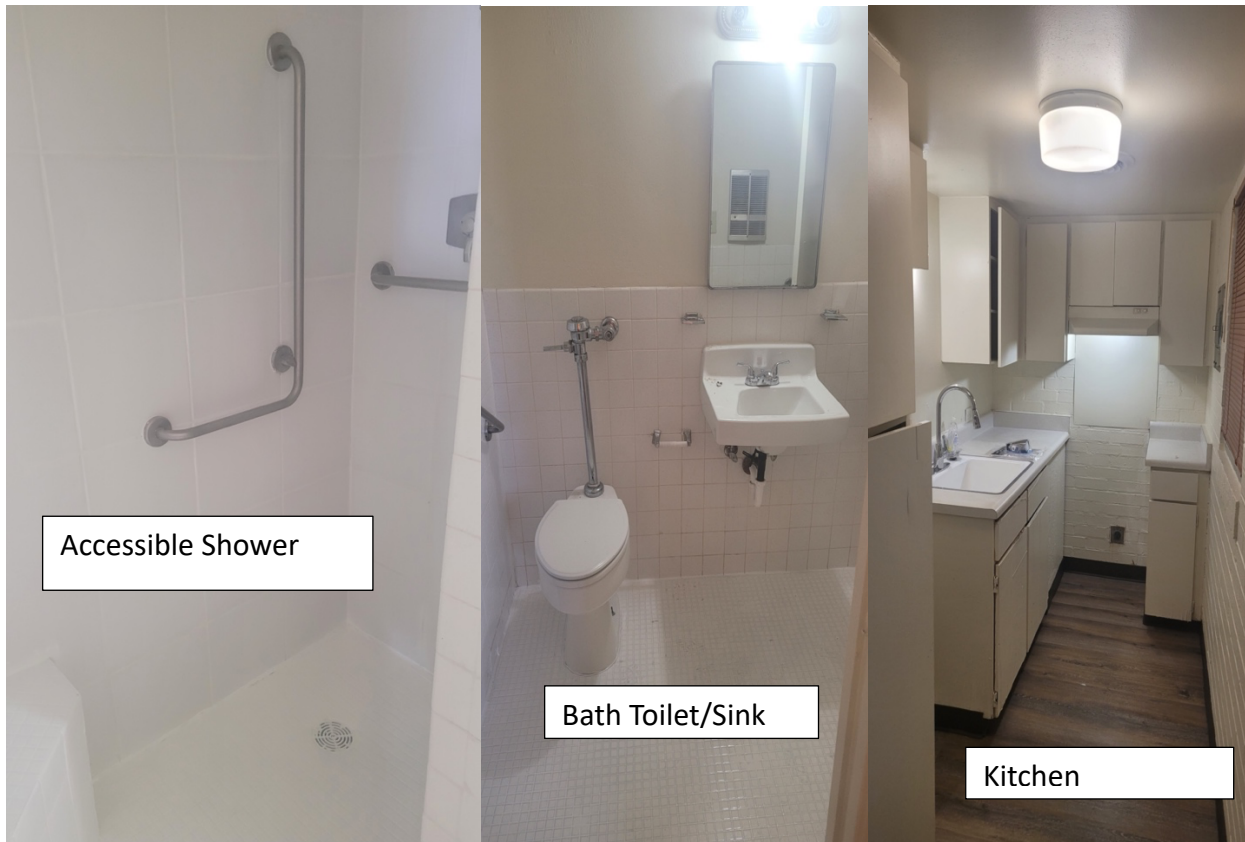
# nbha

New Braunfels Housing Authority

300 Laurel Ln, New Braunfels, TX 78130

Ph 830-625-6909 ■ Fax 830-625-6915 ■ [www.nbhatx.us](http://www.nbhatx.us)

Laurel Lane Interior Photos:



# nbha

New Braunfels Housing Authority

300 Laurel Ln, New Braunfels, TX 78130

Ph 830-625-6909 ■ Fax 830-625-6915 ■ [www.nbhatx.us](http://www.nbhatx.us)



LivingRoom/  
Organizer/Closet



Shower/Accessible  
Features



Shower/Accessible  
Features

# nbha

New Braunfels Housing Authority

300 Laurel Ln, New Braunfels, TX 78130

Ph 830-625-6909 ■ Fax 830-625-6915 ■ [www.nbhatx.us](http://www.nbhatx.us)

