



SPRING 2023.

# Woodland Lake Improvement Association

# NEWSLETTER

---

As the rainy season has come upon us, we are experiencing greater than normal pressures on our dam and spillway. A new sinkhole has opened at the north end of the spillway near the access. Seems a little frightening but we feel confident we can control this latest occurrence with volunteers and materials we have on hand.

Though more than mere seepage, the sink hole is related to the larger seepage problems around the spillway. Meanwhile, we have erected barriers and warnings until the flow is blocked and the opening effectively closed. A more permanent fix is in the offing, and will be discussed at the annual meeting.

This latest incident is a reminder that our dam is dynamic and always under pressure (literally!) by the water it must hold back.

This water is moving, seeking its way around obstacles; seeping into our loose soil; making valleys and cuts as it makes its way inexorably downhill. These effects are virtually irresistible forces of nature. So, for the Association, as mere mortals, we must be vigilant and inventive as we preserve and protect our primary asset: the lake and its dam.

Inventive vigilance is, of course, not cheap. Unfortunately, our predecessors learned an enormously expensive lesson when the state intervened requiring the spillway upgrade that led to a "special assessment". Wisely, the Association now has funding set-aside specifically for the dam. We applaud their foresight as we move toward solutions for the dam issues before us now.



*Spillway and sinkhole, looking west*



*Looking down the hole*

# FITTING TRIBUTE

*for a*

# LOVER of the LAKE



It was a beautiful evening filled with the sounds of laughter, warm greetings and the sweet musicianship of the band Jon had taken under his wing. Performing with heart and soul, driven by the added members Jon's brother, Joeseeph and Gary Jenkins, whom Jon had mentored, the White Ash Boys + 2 entertained us well into the night.



We connected with one another, visiting, sharing stories about our departed friend. Optimism seemed to fill the air much like Jon's personality: upbeat, positive.

It's such a particularly human response to realize upon the passing of a friend just how precious life is and how fortunate we are as survivors of each day in our own lives. The remarkably generous outpouring that funded the new swim dock is just another example of how Jon's personable nature touched many. Seems rather fitting that a swim dock, as symbolic of lake, summer and fun, would be his legacy: Something shared by all, on the lake that connects us all.



The dock dedication included a Blessing, courtesy "Deacon" Scott Blake and a regatta of biodegradable "wish" lanterns released on the water for a dazzling nighttime display.



Thank you Jon Anderson for your brief time with us. May you manage that *Big Act in the Sky!*

# *A Farewell Note From Our Outgoing President*

Greetings Woodland Lake Family,

It seems like just yesterday I joined our Board. The past 6 years have been one of the greatest honors of my life, being able to serve our community along side some truly remarkable people. My first 3 years I served as our Dam and Spillways Director. Serving with Ralph, Mrs. Daniels, Chris Madden and Shirley. Some of the people I look up to the most on this lake. My next 2 years I served as Lake Management and Vice President, with Tori Williams and Ally Martin. We had some interesting challenges yet made the best of it and really did some outstanding things for the Lake. The last year I have had the privilege of serving as President, elected by my peers, and a truly monumental task. I had 2 great Presidents I served as my inspiration and they set the standards for us all, Shirley and Ally.



We started the year with our beloved Jon Anderson as our Vice President, what a great man he was. He truly believed in me always meant more than I can ever say. To have the encouragement of so many of you the past 6 years meant everything. Thank you Ralph, Ed and Gil very much.

I feel like the Board is in great hands as I step down and take a break for a while. We have so many talented people on this Lake who truly care. Tim, Scott, Lance, Roland and Mark good luck next year. I know you guys will continue to do great things. Ed Miller you offered much sage guidance and advice these last 3 years and I'm glad to have you as a friend.

Remember to be kind to each other and always show respect for each other, even when we don't agree, as we are all a part of this Almost Heaven that truly is just that.

Chris Christian

"VOTE 'EM IN!"

## Biographies

*Your paragraph text*

*It's election time again so we've put together some biographies for the membership to learn a bit about who's running. We love them all so they're listed alphabetically.*

*Be mindful that there will be nominations at the upcoming annual meeting to be considered. Our readers may have someone in mind they'd like to see elected to a Board position.*

"VOTE 'EM OUT!"



### **Debbie Butterick**

I have been your neighbor since 2016 when Jon and I bought the log house on Hickory Drive. We were only here on weekends and mini vacations but we quickly made it our home.

After spending time at Woodland Lake with Scott Blake and coming to love it, as soon as he told us the house on Hickory Drive was going to be sold, we knew it was meant to be.

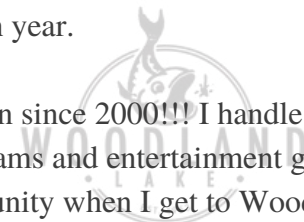
We had previously owned a 50' houseboat on Sardis Lake for many years and enjoyed our time there. But we knew it was time to find our retirement home. We were looking for a log house on a lake and we found it right here at Woodland Lake.

I had previously volunteered on the long range planning committee and enjoyed learning more about the lake and all of the properties and plans for the future to improve Woodland Lake. Once the pandemic hit and I was furloughed, we moved to Woodland fulltime and enjoyed every day at the lake. I can't think of a better place to be quarantined due to COVID!

Although I have lost my life partner Jon, Lucy and I still consider Woodland Lake our home and we are so blessed to have so many friends here that look after us. I am ready to get more involved in our community.

Prior to beginning my career at The Peabody, I worked for 9 years at Memphis in May. I was responsible for overseeing the judging seminars, teaching seminars for contest organizers, running sanctioned contests and working on budgets for the Barbecue Network. During May, my direct areas of responsibility were overseeing the BSMF hospitality committee with my main event being the barbeque contest. I was responsible for all logistics including team selection, vendors, site layout, volunteer committees and judging. I pretty much worked from Tom Lee Park from April 22 to the middle of June each year.

Yes, I still work at The Peabody where I have been since 2000!!! I handle large corporate conventions helping them to plan their conference along with sports teams and entertainment groups staying at the hotel. But I leave work in Memphis and enjoy my home and community when I get to Woodland Lake!!!

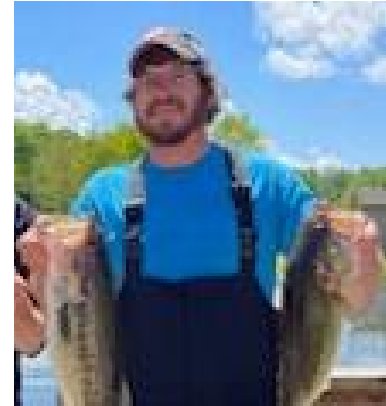


# CANDIDATE BIOS

--Continued--

## ***Lance Martin***

I am currently serving as a board member with the responsibility of Lake Management. I feel our efforts in the past few years have changed this lake for the better and I hope you will elect me again to continue to serve the community and help with what is one of my biggest passions! I think Woodland Lake is a wonderful place and will do everything I can to keep it that way!



## ***Kevin Parsons***

I am thankful to have found a home on such a beautiful lake with an amazing community. I am a hard worker and a quick learner. When ever possible I volunteer to help the community. I participated in the dams cleaning and resealing project, also volunteered during two lake cleanups. If elected, I look forward to working with the board members to learn how to better serve this community.

I lived in Florida for 35 years and decided it was time for a change. We wanted to move to a more tranquil neighborhood and only looked at lake homes. Moving here is the best decision I have ever made. The community is friendly and helpful.

## ***Mark Kelley***

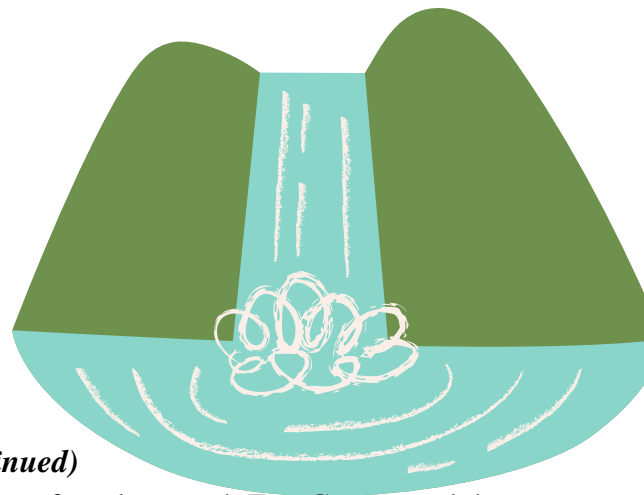
When Jon Anderson passed, a vacancy opened on the Board that I was nominated to fill. The Board held a vote and I was elected to fill the position until the Annual Meeting when the members will determine whether I continue. I dearly wish to continue!

My working career was in service to others through Federally funded construction programs. Educated as a civil engineer, I was a Building Inspector and construction planner in my professional career. I've a keen interest and understanding of large scale projects, how they're contracted and carried out.

*Continued on next page*

# CANDIDATE BIOS

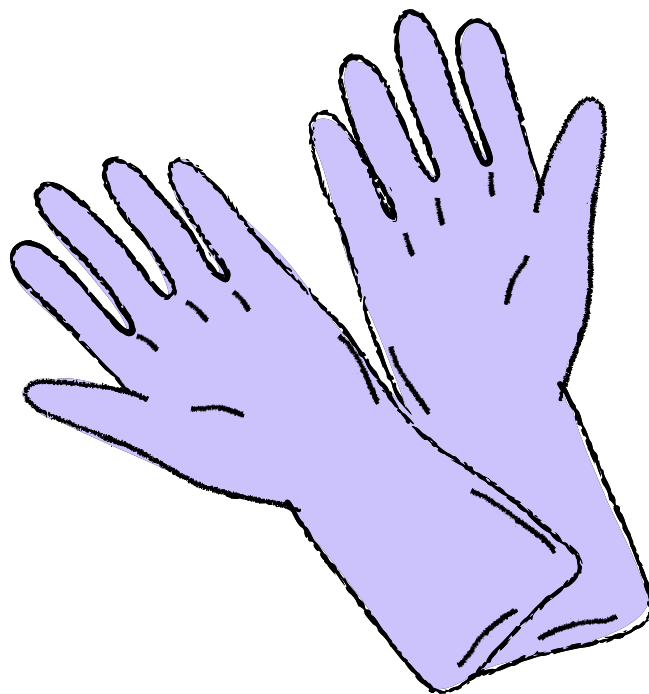
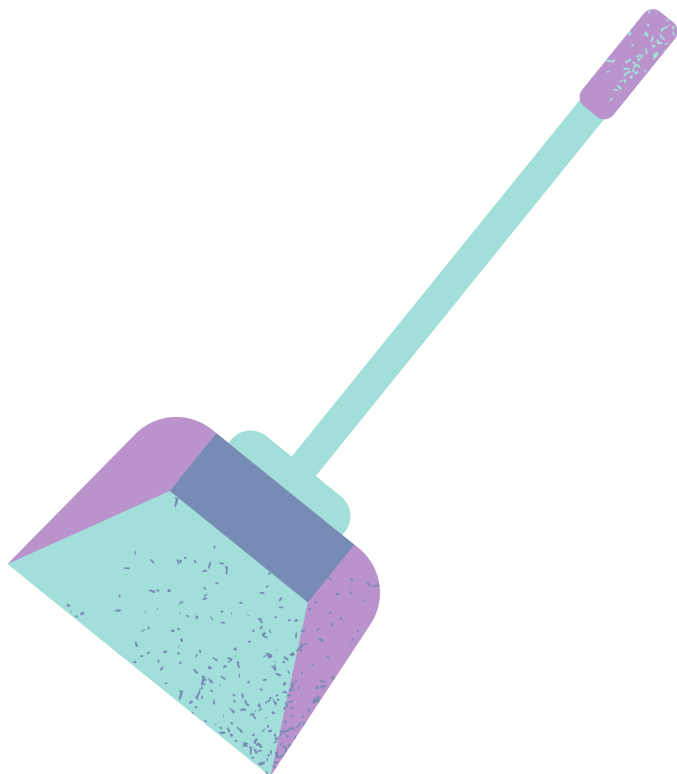
*continued*



## ***Mark Kelley (continued)***

I've had the privilege of working with Tim Cottam and the Owner's rep' Rick Howe, to find a solution and the right contractor to cure the seepage problems we have at the dam spillway. We are close to the Goal, I want to be on the team to bring it across.

Woodland Lake cast it's spell on me in 2011; I found love and happiness and have never looked back. Please vote to keep me on the team!



# Welcome

A BIG  *Welcome!* to:

## Our Newest Members

- *Brady Simpson (welcome back) - Lot 131*
- *Pamela Sullivan - Lot 79*
- *Charlie & Melissa Dunham - Lot 160*
- *Carol Woods - Lot 77*
- *Debbie Butterick (now an official member) - Lot 137*

**\*\*New Construction Coming soon\*\***

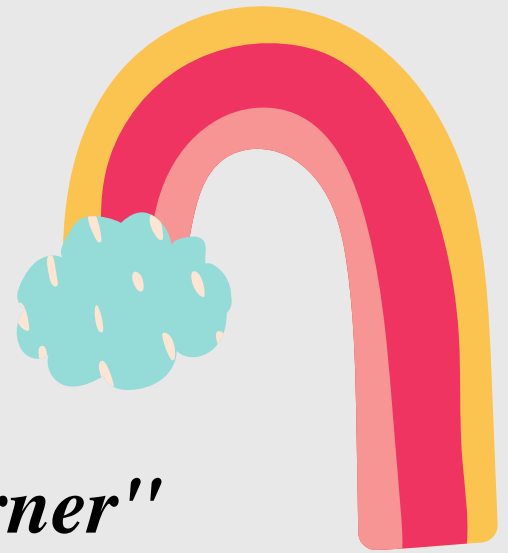
**LOT # 89: Foundation underway.**

**LOT # 72: Delivery anticipated this month**

**LOT # 80: Nearing completion**

**LOT # 181: Summer '23**





## *"Sunshine Corner"*

The Sunshine Committee has been busy again since the last newsletter. We've sent condolence cards to our lake friends who have lost a loved one, get well cards to those under the weather, or recovering from recent surgery, and delivered new neighbor packets.

We became aware of the loss of some of your beloved pets, and would like to offer condolences as well to those who lost a pet who was a loving member of your family.

And how about some milestone events? We've had young adults in our community off and running to the start of a new career, some graduating from high school, some from college, and one lucky daughter living the dream as a new homeowner. Do you know someone who has a milestone event? Give them a shout out in this corner. Text anyone on the sunshine committee.

During the Pandemic, our committee was happy to provide a meal for anyone we knew was ill. But lately, with the Pandemic over, we have delivered cards, flowers or even herb plants to neighbors just out of the hospital.

Let us know if you are ill or unable to get out, or need a prescription picked up, or need some groceries picked up in Hernando - someone is always going "to town" and we will get what you need. Suggestions and comments are always welcome. And just remember, check on your neighbor and you yourself can always spread a little sunshine. It's much appreciated! ☺ ☀

### Committee Members:

Sheilia Dees.....901-484-2940  
 Elaine White.....901-832-4975  
 Sandra Stafford.....662-275-3122  
 Shirley Harris.....870-995-1715  
 Brenda Magill.....662-449-7840  
 Brian Street.....901-461-4698

Sara Anderson-Parsons.....813-312-4286  
 Pat Miller.....901-340-7974  
 Connie Williams.....901-634-6639  
 Jessica Clowney.....901-483-5542  
 Terese Kelley.....901-619-4775





# Snake Pit

Information courtesy of Mike Foshée

## Speckled King Snake *(lampropeltis holbrooki)*

The next snake that we will visit is a crowd favorite, the Speckled King Snake. Identifiers for this snake are its black coloring with white to yellow specks throughout the body. Juveniles will have semi-banded areas across their back that will eventually fade as they age. The king snake's habitat will include woodland areas, along with marsh and wetland areas. The diet of the speckled king snake is small mammals, lizards, frogs, eggs, birds and other snakes. This also includes other king snakes. It will eat venomous snakes, as it has resistance to their venom. As with all other snakes, the Speckled King snake is not aggressive and will not chase you. It can be somewhat bitey when challenged, but if handled correctly it will usually relax.



*credit to Sheila Deese.*



*Courtesy of the web*



*Juvenile King snake  
Courtesy of the web*

## **\*\*Expand Your Mind**

### **Yggdrasill: The World Tree**

*In Norse mythology the cosmic domain is in the form of a tree called Yggdrasill. Its trunk is tall and sturdy. It is the center of the world, the Axis Mundi, linking the two interflowing and outwardly flowing ends of our expanding but interpenetrating Cosmic domain, away from and yet into each another. Yggdrasil is both a spatial and a temporal metaphor of the structure of our universe. It's infinitely bifurcating branches and roots slowly meander upward and downward, flowing with fluid grace upon and into the ocean of time and space, stretching upward to form the firmament above and downward to form the nether realms below, establishing the nine realms of Norse worldview, situated amidst its bifurcating branches and roots spreading in every direction upward, outward, and downward, the nine realms appearing like blooms upon the intricately meandering fractal brocade.*

*Yggdrasil is an extraordinarily beautiful metaphor for the structure of our universe. You should google the phrase fractal geometry and explore the computer simulations of the Mandelbrot set to see just how stupendously encompassing and magnificent the insight of Norse seers was. But in addition to telling us something of the temporal and spatial structure of the universe, Yggdrasil also tells us something about the living and dynamical structure of our everyday reality. A tree is a deeply perplexing creature, to the extent that it marks two simultaneous moments of our reality as both revelation and concealment. We are given to see one part of it, a majestic trunk reaching upward and from it various sturdy branches bifurcating outward in every direction, reaching out to lap the solar wind with a million tongues. But this beautiful image is only revealed to us on the condition that the other half of the tree always remains hidden from our view. This is an exceptionally critical insight about the nature of the world, of truth, and the structure of our understanding, that revelation occurs on the condition of concealment. The more and more you are given to see, the more and more is concealed from you. This is worthy insight to take to the grave because as you will verify, the longer you dwell upon this earth and the deeper and greater your understanding, the deeper and greater will grow your awareness of your ignorance, so profound it is evocative of deep humility. Put your mind to the insight and you will see it proven over and over; and as to the measure of the difference, just simply consider your understanding of our own essential nature.*

*Ordinarily, each of us sees ourselves in light of our own personal history, what our ego recounts as our age and the proprietary forms of the experiences we associate with it. But truly, none of us is 75 years old, or whatever the formal measure, because dissimulated beneath is the hidden history of billions of years that defines our presence here on this earth, the abyssal anterior conditions that delivered us unto the shores of this brief life, and of the tiny drop of consciousness located somewhere within the abyssal universal unconscious of which it is part, a seasonal leaf on Yggdrasill's outer branches.*

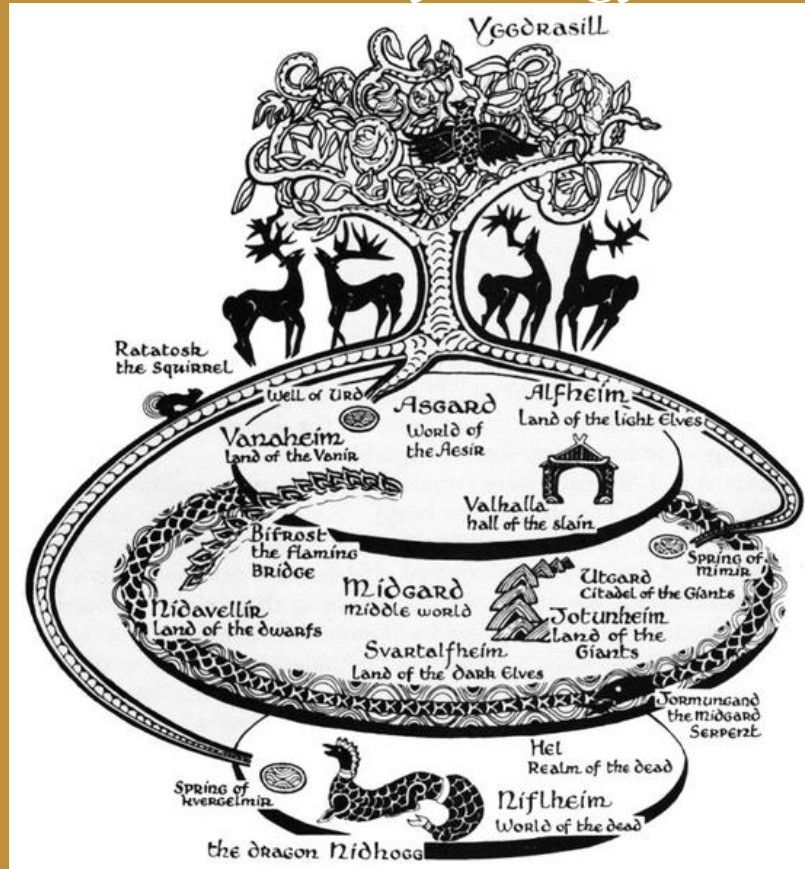


otbridge. There is  
his southern bank.

# "The Cosmos"

in

## Norse Mythology



There is one other insight I will leave you with and it concerns the relation between the subterranean dragon Nidhogg and the world seeing Eagle Vedrfolnir who dwells upon the higher branches. One of Yggdrasil's roots descends into Niflheim, a cold dreary and frozen realm, first winnowed from chaos where the Nidhogg and his serpent kin are busily eating away at it root, slowly bringing death to Yggdrasil and intent on returning it, the universe, back into the primordial state of Chaos. This root (one of 3 main ones) descends into the well of poison called Hvergelmir, meaning that the nectar of life is also a poison, for life is only possible on the condition of death. This is an everyday insight: the piece of steak you so relish is dead, but it is the source of your life. The inverse side of this destructive process is life's creative expression represented by Vedrfolnir overseeing the growth and health of Yggdrasil. The Eagle and the Dragon are antagonists, at cross purposes and the expression of their opposition is carried out by a squirrel, Ratatoskr. Up and down goes the messenger Ratatoskr, communicating insults; meaning the business of life as preservation is at once both constructive and destructive. You cannot have one without the other and you cannot have preservation, the continuance of the cosmos without either. Yggdrasil both thrives and soars in joy of becoming but also groans and aches in agony in its unbecoming. Take that for a measure of your own life. We are both living and dead, simultaneously. Ghosts. To live we must die, moment to moment, and dying we are resurrected in each moment. We are simultaneously both living and dead, the stuff of dreams.

Next time I will speak to you about Chuang Tzu's dream.



# Upcoming Events



11th

**May Board Meeting**  
at 6:30 pm at the clubhouse

13th

**Bass Tournament**  
7 am to noon - \$20 per angler

27th

**Memorial Weekend Potluck**  
1:00 pm at the clubhouse

3rd

**Annual Meeting**  
9 am at 1st Baptist Church  
9670 W. Commerce



**JUNE**

## Acknowledgements:

### ARTICLES:

Chris Christian  
Sheila Deese  
Mike Foshee  
Ashok Kara  
Mark Kelley

### PHOTOS:

Tim Cottam  
Terese Kelley

