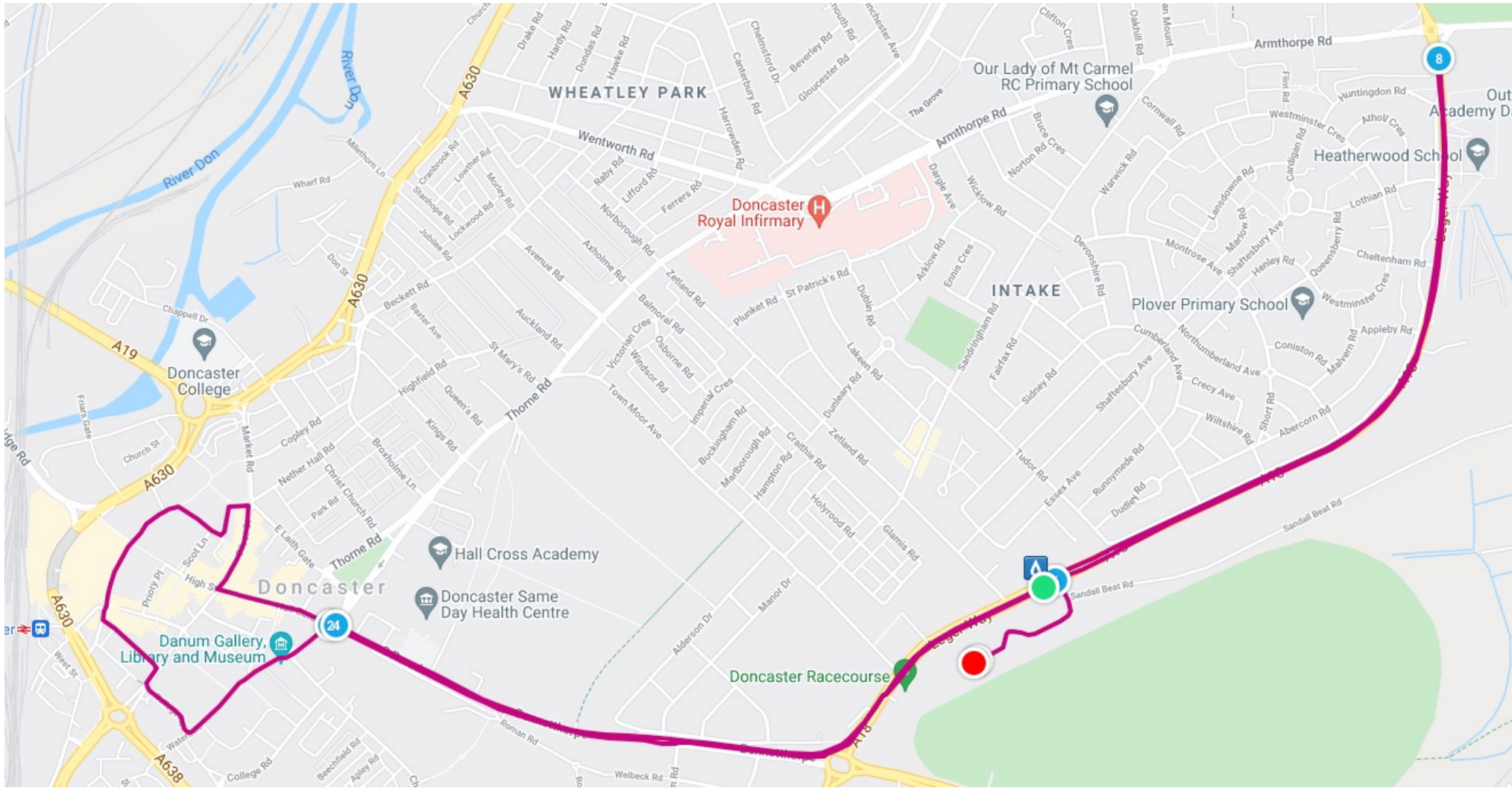


THE HOOBER HOMES DONCASTER CITY 10k Nov 26th 2023 - Local information

**CURLY'S
ATHLETES**

**HOOBER
homes**



Doncaster Deaf Trust
A National Centre of Excellence



THE HOOBER HOMES DONCASTER CITY 10k Nov 26th 2023

We're very excited to be back for year 7, with the National Award Winning Doncaster 10k!

2023 will see 3000 runners taking part and we're delighted to be returning with Hooper Homes to Doncaster City, supporting our charities, and boosting physical activity in the area 😊

Event information

Start/Finish times: 10:00 Start / Last runner across the line 11:45 (est)

Start/Finish location: Doncaster Race Course

- 0-2k- Starting at the rear of the Racecourse (at Sandall Beat Road), heading towards the racecourse roundabout. Turning right up to Bennetthorpe, and heading into the town centre
- 2-4k- All taking place around the town centre, past the council offices, and then a clockwise loop in front of the Frenchgate centre, and down to the marketplace.
- 4-6k -Heading back out of town, up Hallgate, and back down Bennetthorpe, turning left at the roundabout, and then past the racecourse (around the 6k mark.) This is an amazing opportunity for spectators to cheer the runners on!
- 6-8k- Runners head up the A18 to the Armthorpe Water tower, (this is the only real climb in the course with a very short 4% gradient.) A 180 turn, and then heading into the final 2k.
- 8-10k- The final 2k leads the runners straight back to the racecourse. Turning left into the racecourse, and then it's an all out final 400m.

Disruption due to road closures (from 07:00 until 13:00 on the day)

- The following roads will be closed - A18 from Armthorpe roundabout to Racecourse roundabout / Bennetthorpe & South Parade outbound / Waterdale / College Rd / Cleveland St / Duke St/ W Laith Gate / St Sepulchre gate / Baxtergate / Marketplace / Silver St / Scott Lane / Priors place / Printing Office St / Cleveland St / Hall Gate / High St.
- Bennetthorpe inbound will have a shorter closure in place from Danum Road up to Waterdale from 09:30-10:30
- With the exception of Leger Way, we will begin clearing the rest of the route from 11:00 to keep disruption to a minimum

How will this impact me?

Access to the town centre will be limited from the Bennetthorpe direction. If you're heading into town, we recommend you avoid driving "across" the town centre and park on one of the outlying car park locations to the North, West or East of the town centre.

Resident in the area? Very few properties are "landlocked" by the event. If you are one, we will attempt to contact you directly, but please get in touch if you want more information. These are Residents on Regent Square, and residents on the outbound side of Bennetthorpe (along with a small number of properties on Leger Way, next to the bus station)

Business, club or group based within the closure zone? We will be attempting to contact you directly, however, feel free to get in touch. This will help us understand exactly what access/exit you require and how best we can facilitate this..

We would love your support out on the course, so please come out and cheer the runners on!

Find out more on the Doncaster 10k website: <https://doncaster10k.co.uk/road-closures>

Or, if you can't find an answer to your question on the website, please get in touch: contact@curlysathletes.co.uk