

# Muletown {local}

COLUMBIA & MAURY COUNTY

FEBRUARY 2024

**LOCAL  
PROFITT**

LOCAL ADVENTURE | LOCAL DISCOVERY

# Your *heart* is in the right place.

From the moment you call 911 for a heart attack, Maury Regional Medical Center is ready to care for you.

Utilizing our state-of-the-art cardiac catheterization lab, a team of expert cardiologists on our medical staff work in tandem with our highly skilled and experienced clinical professionals to investigate heart conditions and perform life-saving interventional procedures.

When every second counts, take comfort in having expert cardiology care close to home.



**MAURY REGIONAL  
HEALTH**

## **Do you know the symptoms of a heart attack?**

If you or someone nearby experiences any of the following symptoms, don't delay. Call 911 immediately.

- Chest discomfort, such as pressure, tightness or pain
- Discomfort in other parts of the body (arm, jaw, back, neck)
- Shortness of breath
- Unusual fatigue
- Nausea, light-headedness or cold sweat





# Where You Bank Matters

**Serving organizations of all kinds, including small businesses, churches, ministries, non-profits, schools, and universities for over 65 years**

## **Business Accounts**

- Checking
- Savings
- Money Market
- Credit Cards

## **Business Lending**

- Commercial Real Estate Loans
- Church/Ministry Loans
- School Real Estate Loans
- K-12 Tuition Financing



**YOUR DEDICATED FIELD REP  
LOCATED IN SPRING HILL**

**Andrew Gutierrez**

*Account Executive*  
(626) 208-5461  
agutierrez@americascu.com



**SCHEDULE A FREE  
CONSULTATION  
WITH ANDREW**

## **Pick Your Term**

3·6·9 MONTHS @ 4.75% APY<sup>1</sup>

**Open a term  
share certificate  
for 3, 6, or 9 months  
and earn 4.75% APY<sup>1</sup>!**

**[AmericasChristianCU.com/PickYourTermCorporate](https://AmericasChristianCU.com/PickYourTermCorporate)**

1 - APY = Annual Percentage Yield. APY is the percentage reflecting the total amount of interest that could be paid on an account based on the interest rate and frequency of compounding. APY assumes original balance and earnings remain on deposit and rate holds constant for 365 days. Penalty for early withdrawal. Minimum balance of \$1,000 is required in order to open Term Share Certificate and earn dividends. APY is accurate as of 09/01/2023. Fees may reduce earnings. All program rates, offers, terms and conditions are subject to change without notice. Visit [AmericasChristianCU.com/Rates](https://AmericasChristianCU.com/Rates) for the most up-to-date information.

New members must qualify for membership and must pay a \$2 membership fee. This credit union is federally insured by the National Credit Union Administration. Added savings protection provided by American Share Insurance (ASI) on qualifying member's accounts in excess of that provided by NCUA. ASI is a credit union owned-share guaranty corporation. See a credit union representative for details.

**[AmericasChristianCU.com](https://AmericasChristianCU.com)**   

This credit union is federally insured by the National Credit Union Administration. Added savings protection is provided by American Share Insurance (ASI) on qualifying member's accounts in excess of that provided by NCUA. ASI is a credit union owned-share guaranty corporation. See a credit union representative for details.



Erie  
Insurance®

*Proudly representing Erie Insurance since 2003*

*Life Insurance  
for the Ones You Love  
Call Today!*

**DeBerryInsurance.com**

**931.486.3300**

5232 Main Street | Spring Hill

**De BERRY**  
INSURANCE AGENCY

**SHRED DAY APRIL 13  
SAVE THE DATE!**

Saturday, April 13 from 10-2  
at DeBerry Insurance Agency.



One  
Step  
Ahead

**Family**ADVANTAGE

FEDERAL CREDIT UNION

**We're delighted to invite you to join our CD Family**

Take advantage of our special CD rates:

**1-YEAR CD RATE OF 5.00% APY\* • 2-YEAR CD RATE OF 3.50% APY\***

• This exclusive offer is our way of thanking  
you for being part of the Family Advantage FCU community.



Federally Insured by

**NCUA**

\*APY = Annual Percentage Yield

# Inside *{local}* February '24

**8**

## HUNGER FOR SUSHI LEADS TO MUSIC CAREER

A chance meeting leads to country a music career

**14**

## SHE LOVES WHAT SHE DOES

Experienced real estate broker's successful journey in Maury County

## LOCAL FOCUS SERVICE DIRECTORY 20, 21

Visit our website [muletownlocal.com](http://muletownlocal.com)

**ON THE COVER:** *The last couple of years have been a whirlwind for Columbia native and rising country music singer and songwriter Shane Profitt. Photo by Josh Daubin*

Muletown Local is published by WilcoLocal Media & Marketing, published twelve times per year, and delivered both online and by postal delivery to over 7,200 homes in the Columbia area. Advertising claims are the sole responsibility of the consumer to check the validity and honesty of the offer made by the business. WilcoLocal Media and Muletown Local are not responsible for claims made by the business owners. Please submit any questions or comments to [jbryant@wilcolocal.com](mailto:jbryant@wilcolocal.com).

For advertising information contact Jeff Bryant at 615-828-2542, or [jbryant@wilcolocal.com](mailto:jbryant@wilcolocal.com)

# thrift LOVE

## Donation Based Non Profit Thrift Store

**OUR MISSION** is to provide an employment platform for those with special needs and/or disabilities, and offer their talents to benefit both themselves and their community.

**[thriftlove.org](http://thriftlove.org) | YOUR STUFF = JOBS**

1116 Nashville Hwy Suite 101 COLUMBIA | **931-374-6754**

Mon. Wed. & Fri. 10-5. | Thurs 10-6. | Sat 10-4. | Closed Sun

## Love Your Skin This Valentine's Day!

*Cherish the skin you're in this Valentine's Day with the*  
**Harpeth Valley Dermatology Skincare line!**

### **INDULGE IN RADIANCE:**

Elevate your skincare routine with our Harpeth Valley Dermatology Peptide Renewal Serum. Our Peptide Renewal Serum is a moisturizer rich in peptides, ceramides, Vitamin E, and other skin-restoring agents formulated to fight against signs of aging and hydrate dry skin, restoring a youthful, healthy glow.

### **PAMPER YOURSELF:**

Treat yourself or your loved one to the ultimate self-care routine with our Age Reversal Neck Cream. Specifically formulated to address the special needs of the neck and décolleté. This advanced, intensely hydrating emulsion

defies time and gravity to provide an immediate tightening and anti-gravity effect, fighting against sagging of the skin and tightening this delicate skin.

### **GIFT OF LOVE:**

Surprise your loved ones with our Neutral Eye Complex, the perfect addition to any daily revitalizing skincare routine. Contains clinically proven Retinol-based formula with Vitamin C, Squalane and Coenzyme Q10, to effectively treat photo damaged skin. Firms, tightens and brightens aging skin.

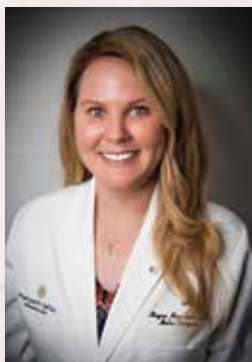
### **FEEL CONFIDENT, FEEL BEAUTIFUL:**

Embrace the confidence that comes with our carefully curated skincare line. Love yourself a little extra this Valentine's Day!

For more information, please go to [harpethvalleydermatology.com](http://harpethvalleydermatology.com) or call us at **615-905-8083**.



Dr. Benjamin Bashline



Dr. Megan Morrison



Dr. Pezhman Shoureshi



Harpeth Valley  
DERMATOLOGY

990 ELLISTON WAY | SUITE 101 | THOMPSON'S STATION





# building homes, hope, and community *in Maury County*

hfhwm.org | (615) 690-8090 | info@hfhwm.org



## MODERN ORTHODONTICS OLD-FASHIONED CARE

24/7 ACCESS TO DR. WES

RELAXED ONE-ON-ONE VISITS

HIGH-TECH, CUSTOM  
TREATMENTS FOR ALL AGES

NO CRAZY WAITS OR  
ASSEMBLY LINE CARE

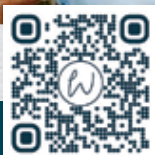
COMPLIMENTARY  
CONSULTATIONS

**615.282.5038**



*Dr. Wes*

ORTHODONTICS



DR. WES CHLADNY

4012 O'HALLORN DRIVE, SUITE B, SPRING HILL | **drwesortho.com**



Photography by Josh Daubin

# HOMETOWN CINDERELLA STORY

**PAM WINDSOR**

The last couple of years have been a bit of a whirlwind for singer/songwriter Shane Profitt. It wasn't long ago the Columbia native was working full-time for the city and playing solo music gigs at restaurants on the weekends.

Things changed after a chance meeting with country artist Chris Janson, and life hasn't been the same since. Profitt quit his city job, went on tour, got a record deal, released an EP, and saw one of his songs, "How It Oughta Be," break into the Top 15 on country radio.

"I've been very, very blessed," Profitt says. "Last year, I played over 200 shows, I've been to 48 of the 50 states, and I've even been to Canada.

His good fortune followed a lot of hard work and determination. Now 24, Profitt began playing music about six years ago.

"I was a senior in high school, and my granddad asked what I wanted for Christmas. I told him I just wanted to learn to play the guitar. So, he taught me the G, C, and D chords, and I kind of stuck with it."

Profitt was a quick study and soon had a collection of cover

songs under his belt. He got his first paying gig at Joey's Cajun Restaurant, which required him to play for two hours.

"At the time, I only knew about six songs, so I sat on a Yeti cooler and played my six songs. It didn't fill two hours, so I'd sing my six songs, take a break, then start at square one again until I met the two-hour mark."

He continued learning songs and after high school, got a job with the city, and began playing at restaurants on weekends.

"Every other month, I would go play the Puckett's in Columbia, the one in Nashville, the one in Chattanooga, and the one in Pigeon Forge. And it seemed like every time I'd go back to Puckett's, they'd be like, hey, this thing has sold out for tonight. And it kind of grew from there."

He tried his hand at songwriting and discovered he had a gift for it. So, when he saw one of his favorite artists, Chris Janson, at a sushi restaurant, Profitt decided to take a chance.

"I went up to him and told him what a fan I was, that I wrote songs, and it would really mean the world to me if he would listen to some of my music. We struck up a conversation, and I ended up getting his wife's email address."

**PAGE 10 >**





**24/7 FULL SERVICE**  
**COMMERCIAL | INDUSTRIAL**  
**RESIDENTIAL**

**931-381-9286**



**SERVING MAURY COUNTY SINCE 1969 | LOCALLY OWNED BY THE CARTER FAMILY FOR OVER 15 YEARS**

# SHANE PROFITT

## LIVE IN CONCERT

*Bring your family for a hometown celebration  
of Shane and his music*

**Thurs., March 14, 2024 @ 7 p.m.**

Cherry Theater  
Waymon L. Hickman Building

1665 Hampshire Pike, Columbia State  
Community College

**(931) 540-2879**

**performanceseries@columbiastate.edu**  
**columbiastate.edu/performance-series**



Photography by Josh Daubin

### < FROM PAGE 8

As soon as he hit the parking lot, Profitt grabbed his phone and emailed her several of his songs. Two weeks later, he got a call from Janson.

"He said I listened to those songs, and they're good," Profitt recalls. "And I told him I really appreciated that. Then he said, 'I want you to do me a favor. Put in your two-week notice; I want you to go on tour with me.'"

A couple of days later, Janson called again and asked if Profitt could get to the Nashville airport in 90 minutes. Janson was taking a private jet to a show and wanted Profitt to join him. Profitt made the flight, they traveled to Pennsylvania, and arrived just before the show was set to start.

"We get there," Profitt recalls, "and Chris says, 'Hey man, you've got 30 minutes to go out there and wow them.'"

When Profitt pointed out he didn't have a guitar, one was provided for him.

"So, I went out there with just an acoustic guitar for 30 minutes before Chris took the stage," Profitt says. "I was the opener that night and had no idea until an hour prior."

Profitt held his own, went on tour with Janson, and within a

few months got his own record deal.

"It's a Cinderella story, for sure," Profitt says with a laugh.

He's proven he can sing, entertain a crowd, and write songs with depth and substance. Songs he's released so far, like "How It Oughta Be," "Good Luck and God," and "Still Picks Up," reflect his faith, blue-collar background, and small-town values. His latest, "I Am Who I Am," shows his independent spirit.

"The thing about getting a record deal and getting even the slightest bit of success is people feel like you have to do things a certain way, dress a certain way, and say certain things. And quite honestly, I'm never going to do that. I feel like you should never apologize for who you are, so I wrote a song about it."

Profitt has much to look forward to in the year ahead. There's a new album in the works, he'll be heading out on tour with Aaron Lewis, and he has a show at Columbia State in March.

"I'm very excited about that," he says.

Despite all he's accomplished, there's something special about playing his hometown.

"Everything ties back to where you come from, and I'm very blessed to say this is where I come from."

To learn more about Shane Profitt, visit: [www.shaneprofit.com](http://www.shaneprofit.com)



Excellence In Private Christian  
**EDUCATION**  
 — COLUMBIA ACADEMY —

COLUMBIA: PRESCHOOL - 12TH GRADE • SPRING HILL: PRESCHOOL-6TH GRADE



KNOWLEDGE

CONFIDENCE

CHARACTER

**CABULLDOGS.ORG**

# REMODELING NEW CONSTRUCTION HOME MAINTENANCE

SMALL AND LARGE PROJECTS



**Robenstine Construction**

robenstineconstruction1@gmail.com

Rick Robenstine 615-400-5916



**VOTED MAURY COUNTY'S #1 FAMILY ENTERTAINMENT CENTER  
 & #1 PLACE TO HAVE A BIRTHDAY PARTY**

GREAT FOOD AND FULL SERVICE BAR | 32 BOWLING LANES | HUGE ARCADE | LASER TAG | BUMPER CARS | PRIVATE PARTY ROOMS

730 Mooresville Pike, Columbia | 931.381.BOWL | tennpin.com





*Join us!*

## SUNDAY SERVICES

9am | 10:45am



CHRIST  
CHAPEL

BEHOLD AND BECOME LIKE JESUS.

[christchapel.live](https://christchapel.live)

3066 HWY 431 | Spring Hill, TN 37174

## ATHENS INSURANCE



- AUTO
- HOME
- BUSINESS
- LIFE



**Andy Crichton** Agent

*"Combining the coverage you need  
with the service you deserve."*

**acrichton@athensins.com**  
**931.398.5533**

700 N. MAIN STREET | SUITE 100-101 | COLUMBIA

Real Estate Broker for 46 years.

When you have problems, I have the answers



*Sally  
Woodard*

Managing Broker  
Lifetime Multi Million Dollar Club  
Lifetime Career Award

Cell: 931-698-4969  
Office: 931-540-8400

sally.woodard@crye-leike.com  
website: <https://sallywoodard.crye-leike.com>

**CRYE-LEIKE®**  
REALTORS®



[www.clhomes.com](http://www.clhomes.com)  
1118 Nashville Hwy. • Columbia, TN 38401



**RELIABLE. HOMETOWN. QUALITY.**  
**931-379-3775**

**LUMBER | METAL ROOFING  
AND SIDING | FEED | HARDWARE  
POLE BARNs | REBAR  
CULVERTS | MULCH | GRAVEL  
SAND | EQUIPMENT RENTALS  
SEASONAL FLOWERS  
AND GOODS | CONCRETE**

**MidTennSupplyllc.com**

**COME BY AND SEE US!**

**301 CANAAN RD | COLUMBIA**

**EMAIL: [INFO@MIDTENNSUPPLY.COM](mailto:info@midtennsupply.com)**



MIDTENN SUPPLY



@MIDTENNSUPPLY

**MON-TUES 7:30-4:30 • WED 7:30-2:00**

**THURS-FRI 7:30-4:30 • SAT 7:30-12:00**





**“TREAT EVERYONE WITH  
KINDNESS, AND YOU CAN’T  
GO WRONG”**

Photography by Robbie Mathis

# PASSION FOR REAL ESTATE

## JASON ZASKY

“Maury County is sitting just where it needs to be for the 2024 market,” begins Sally Woodard, managing broker at Crye-Leike Realtors at 1118 Nashville Highway in Columbia. Woodard — a real estate broker since 1976 — is in a position to know, having worked as a broker in Columbia for the past four-plus decades after starting her career in southern Illinois.

“We’re getting a bigger supply of houses, so there’s more to choose from,” explains Woodard. Plus, “interest rates have come down a little. They are still in the 6s. That is a very low rate compared to what they have been (historically). Only two times (in my career) I have seen them dip below five percent and they didn’t stay very long.”

The current real estate market aside, one can argue that Woodard is a very knowledgeable broker, owing to her combination of

experience and passion for her work.

“I’m a great listing broker because I know exactly how to market properties, and I stay in contact with my clients often,” she insists.”

Indeed, Woodard’s level of experience is hard to beat, having owned and operated White/Woodard Realty for 32 years before joining Crye-Leike in 2014 after her longtime business partner, Sarah White, became ill. In fact, for almost two decades, White/Woodard Realty had the majority of the business in Maury County, according to Woodard.

But what really stands out is Woodard’s devotion to her work and the value she places on treating people right, both of which contributed to her receiving the Lifetime Achievement Award from the Southern Middle Tennessee Association of REALTORS in 2005.

**PAGE 16 >**



# WINTERFEST

## DIVISIONS

SUPER LATE MODEL  
602 LATE MODEL  
FACTORY STOCK  
OPEN WHEEL  
PURE PONY  
DWARF  
MOD LITE  
FWD  
ENDURO

## FEB 17 & 18



## MORE INFO

FIND AND LIKE US ON  
FACEBOOK

[www.duckriversracewaypark.com](http://www.duckriversracewaypark.com)

1100 HASKINS CHAPEL ROAD  
LEWISBURG, TN 37091  
615-474-2505

10 MINS FROM HENRY HORTON STATE PARK

FULL CONCESSIONS  
CLEAN BATHROOMS

# DUCK RIVER

## Raceway Park



WINNER



# W'lin's

OPEN VALENTINE'S DAY FEBRUARY 14<sup>TH</sup>

**\$5 OFF**

\$35 OR MORE

W'lin's expires 3/5/24

BUY ONE LUNCH  
SPECIAL - GET ONE

**HALF OFF**

W'lin's expires 3/5/24

WED - MON 11AM-9PM LUNCH MON, WED-SAT 11AM-3PM CLOSED TUESDAY



2105 WALL STREET | SUITE 103 | SPRING HILL | 615.302.8088 | ORDER ONLINE [WlinsTN.com](http://WlinsTN.com)



Photography by Robbie Mathis

#### < FROM PAGE 14

“From day one, real estate has been a passion; it has never been a day’s work for me. I cannot wait to get to the office and get around my agents. I count my agency, which I love dearly, as my family,” she continues, having noted that her late husband passed away 16 years ago.

That said, she has always had strong relationships with the people she has worked alongside.

“I never had an argument with Sarah White in the 32 years we worked together,” says Woodard. More notably, still, her current personal assistant, Ruth Loveless, has been working with her for almost 20 years and counting.

“She came with me when I came to Crye-Leike, and she is the most wonderful person you could ever have in your life. I think so much of Ruth that when I pass away, I am giving her my house. That is a testament to how much she means to me,” offers Woodard, who also has high praise for her employer.

“Crye-Leike Realtors, to me, is the best company I have ever seen, and (founder and CEO) Harold Crye is one of the finest people I have ever met. He is devoted to his agents, and he lets his managers run their offices. And, Crye-Leike is always coming up with new technology — everything possible to help us help our buyers and sellers,” she says.

Meanwhile, Woodard has exceptionally high praise for Crye-Leike’s “Wealth Building Retirement Program,” a program

designed to secure the financial future of the company’s agents via an array of benefits. That includes the payment of 25% of an agent’s highest three years of earnings annually, with monthly checks issued for 15 years.

“Let’s say your average earnings were \$200,000 for those three years. You would receive \$50,000 a year for 15 years,” confirms Woodard, who calls this benefit “the most wonderful thing our company has ever offered to our younger agents,” who she frequently takes the time to mentor, often echoing the advice of her father.

“He taught me a couple things I have lived by my whole life: When you give your word, you keep it. And whatever you do in life, you do the very best job you can do. That is what I tell my agents. Do your best every day, and you will have a great career in this business,” she says.

Asked if she has any other memorable mottos, she offers one more: “Treat everyone with kindness, and you can’t go wrong.”

#### CONTACT:

**Sally Woodard**  
**Crye-Leike Realtors**  
**1118 Nashville Hwy.**  
**Columbia, TN 38401**  
**931-540-8400**  
**sally.woodard@crye-leike.com**





**Liberty**  
FEDERAL CREDIT UNION

# BUYING *or* BUILDING?

*Call Us First!*

UP TO **\$500** gift card at closing<sup>1</sup>



**JASON BARTO**  
MORTGAGE MANAGER  
(615) 784-5621  
NMLS# 18426



(1) Gift card offer is available on financing of purchase or construction loans for primary residences only. Purchase or construction loan amounts up to \$149,999 will receive a \$250 gift card. Purchase or construction loan amounts of \$150,000 or greater will receive a \$500 gift card. Not valid in combination with any other offer. Liberty FCU mortgage lending product availability may vary based on property location. Federally Insured by NCUA Equal Housing Lender NMLS# 518136



*Delicious iced coffee, smoothies or frappes*

**DELICIOUS FRESH ROASTED COFFEE**  
*BREAKFAST & LUNCH SERVED ALL DAY*

**931.223.5347**

1909 SHADY BROOK ST  
COLUMBIA

*(corner of James Campbell Blvd.)*

M-FRI. 6AM-6PM | SAT. 7AM-6PM  
**CLOSED SUNDAY**



# **QUIK MART**

**CONVENIENCE STORES**

Edwards Oil Company  
Since 1945



**39 LOCATIONS SERVING MIDDLE TENNESSEE  
AND NORTHERN ALABAMA!**



**FIND A QUIK MART CONVENIENCE STORE NEAR YOU**

**WWW.QUIKMART.COM**





# Superior Quality Dental Care

***BUILDING PATIENT RELATIONSHIPS ONE SMILE AT A TIME!***



Sam Hutton, DDS



Emalie Hutton, DDS

*CALL OR VISIT OUR WEBSITE TO SCHEDULE AN APPOINTMENT*

**HUTTONFAMILYDENTISTRY.COM | 931-388-1935**

1706 WEDGEWOOD DR. | COLUMBIA | MON-THURS 8-5

## JIMMY D. DUGGER



*I Want To Be  
Your Family's  
"REALTOR  
FOR LIFE"*

**BROKER - VICE PRESIDENT | Auctioneer**

Office: **931-540-8400** | Mobile: **615-210-5027**

**CRYE-LEIKE,  
REALTORS®**

118 NASHVILLE HWY. | COLUMBIA, TN

**REMEMBER I'M  
JIMMY D.  
COME LIST,  
BUY & SELL WITH ME!**

## Mr. Electric®

a **neighborly** company



Tarra Bopp: Owner **724-953-3062**

**MrElectric.com**  
**columbiatn.owner@mrelectric.com**

*Locally owned & operated franchise*



*"We offer Peace of Mind Protection" Covering all of your insurance needs since 1952.*

**HOME | AUTO | LIFE | FLOOD | COMMERCIAL** | Licensed in TN, AL, GA, & FL.  
204 W. 4th St. COLUMBIA | **931-388-8365** | [Info@fosterins.com](mailto:Info@fosterins.com) | **FOSTERINS.COM**

**Auto-Owners**  
INSURANCE  
LIFE • HOME • CAR • BUSINESS



**PROGRESSIVE**



**Comprehensive Diagnostic & Therapeutic Eye Care**  
\*Experienced Ophthalmologists  
\*Specializing in Medicine and Surgery of the Eye  
\*Refractive and Cataract Surgery



Jacob W. Fleenor, MD



Timothy E. Gordon, MD



Ralph F. Hamilton, MD

**Creekside Medical Plaza**

1050 N. James Campbell Blvd., Suite 100 | Columbia  
Call (931) 375-1050 | [columbiaeye.net](http://columbiaeye.net)

## HEARTS GALORE SPECIAL

**60 MINUTE SWEDISH MASSAGE & 45 MINUTE SALT ROOM SESSION**  
-OR-

**60 MINUTE EUROPEAN FACIAL & 45 MINUTE SALT ROOM SESSION**

**ONLY \$100.** (OFFER EXPIRES 2-29-24)

*Helping you feel better mentally, emotionally, and physically.*

**SALT THERAPY | INFRARED SAUNA | DERMAPLANING**  
**HYDRAFACIALS | VIBRATIONAL FREQUENCY TABLE**  
**MASSAGE THERAPY | FACIAL SKINCARE**  
**WAXING SERVICES | [SALTEDPEACE.COM](http://SALTEDPEACE.COM)**




**SALTED PEACE**  
A HOLISTIC WELLNESS SPA

1029 CROSSINGS BLVD (across from Target) SPRING HILL | MON. - SAT. 9:30 - 7:00 | 931.451.7799



# THE MULETOWN



**DISCOUNT PLUMBING  
& ELECTRIC SUPPLY**  
**discountpe.com**  
FRANKLIN 615-794-1068 | COLUMBIA 931-388-8467

1508 Nashville Hwy. Columbia  
101 Century Court Franklin



**Brandon Turnbow**  
**931-451-0074**  
columbiasf.com  
2548 NASHVILLE HWY | SUITE C | COLUMBIA

**Parkway Wine & Spirits**  
CHECK US OUT ON FACEBOOK

**VALENTINE'S DAY**  
**FEBRUARY 14**

Mon - Thur 9AM-9PM | Fri - Sat 9AM-10PM | Sun 12PM-7PM  
*Located in the Crossings of Spring Hill Shopping Center next to Cracker Barrel*

**2026 CROSSINGS CIR | SPRING HILL | 931.451.7118**



**\$25 OFF**  
NO JOB TOO SMALL  
Take Advantage of our  
Discounts by Visiting  
[www.callthesouthernelectrictoday.com](http://www.callthesouthernelectrictoday.com)  
EXPIRES 2/29/24 • Must Present Coupon

**615-261-4800**

We Now Offer  
**FINANCING PLANS**  
EASY APPLICATION PROCESS | FAST APPROVAL | SIMPLE PROCESS

**LANDSCAPE LIGHTING  
RECESS CAN LIGHTING | REMODELING  
BREAKER PANEL UPGRADES  
CEILING FAN INSTALLATION  
LIGHTS & OUTLETS | SPAS & POOLS  
NEW CONSTRUCTION**

**callsouthernelectrictoday.com**



Construction & Development  
[www.Sieglecd.com](http://www.Sieglecd.com)

Call 615.636.2095 or email [info@sieglecd.com](mailto:info@sieglecd.com) for a  
**FREE CONSULTATION**

New Home Construction Remodels and Additions  
Small Commercial Projects

Over 25 years experience  
Serving Maury, Williamson, and surrounding Counties

The Best Gifts Come in Small Packages



Tillis Jewelry | 105 W. 7th St. | Columbia | 931.901.0242 | [tillisjewelry.com](http://tillisjewelry.com)

**April Gardner**  
Realtor®

**802.224.6547**  
[april@aprilgardnerrealestate.com](mailto:april@aprilgardnerrealestate.com)

SimpliHOM  
278 Franklin Rd #190  
Brentwood, TN 37027

[aprilgardnerrealestate.com](http://aprilgardnerrealestate.com)




HEATING & COOLING  
Home Comfort Specialists  
an HVAC Company




**931-388-2090 | [davisheatingandcooling.net](http://davisheatingandcooling.net)**  
2319 Campbell Park Drive, Columbia



**FLAG WORLD**

Over 4,000 Flags in Stock | Flag Pole Installation  
Decals, Military Pins, Patches, Kites, Windsocks,  
Yard Spinners, Mailbox Covers.

**[craig@flagworldamerica.com](mailto:craig@flagworldamerica.com) [flagworldamerica.com](http://flagworldamerica.com)**

CRAIG EILERMANN, OWNER | 32 PUBLIC SQ. | COLUMBIA | 931.548.2076



# SERVICES DIRECTORY

## JOHNSON'S CARPETS & FLOORS

COMMERCIAL | RESIDENTIAL | CARPET  
WATERPROOF LVT | HARDWOOD  
LAMINATE | SALES & INSTALLATION

**931.388.1386**  
**johnsonscarpetttn.com**

M-FRI. 8-5 | 1208 S. MAIN | COLUMBIA



Don Johnson

## THE TRAILER STORE

SALES AND RENTAL • ALL TYPES OF TRAILERS • PARTS & SERVICE

HORSE AND CATTLE | EQUIPMENT | FLAT UTILITY  
CUSTOM BUILT | ENCLOSED CARGO

**BEST PRICES | LARGEST SELECTION**

1021 NEW LEWISBURG HIGHWAY | COLUMBIA 931-381-2795 | M-F 8-5

**TheTrailerStoreColumbia.com**



**30% OFF**  
ALL WINDOW COVERINGS EXCLUDING SHUTTERS

ADDITIONAL  
**10% OFF**  
AT TIME OF ESTIMATE ONLY. SOME RESTRICTIONS APPLY.  
NOT VALID WITH OTHER OFFERS.

FREE IN-HOME CONSULTATION • INSTALLATION INCLUDED

Call **615.887.1823** for **FREE In Home Consultation**  
or email us at **theblindgirls@gmail.com**

**15cent PRESSURE WASHING**  
RESIDENTIAL AND COMMERCIAL  
The Best In Town

931-446-1031  
contactus@15centpressurewashing.com  
15centpressurewashing.com

**LANDERS**  
INSURANCE AGENCY

Great rates. Great service.

2002 - 2022  
**20**  
YEARS OF EXCELLENCE  
LANDERS INSURANCE AGENCY LLC

AUTO • HOME • LIFE • BUSINESS

931.380.2003  
514 N. GARDEN ST. | COLUMBIA

**HEAL THE WORLD**

Organic Juice  
Smoothie Bar  
Supplements & Groceries  
columbiahealthfoods.com  
**931-388-1148**  
106 W 7th St, Columbia

**GT AUTOMOTIVE**

ENGINE/TRANSMISSION DIAGNOSTICS  
A/C SYSTEM | BRAKES | GENERAL AUTOMOTIVE  
REPAIR AND SERVICE

GTA38401@gmail.com Francisco Lopez, Automotive Technician

1319 S. MAIN ST COLUMBIA | 931.408.8350 | FAMILY OWNED AND OPERATED

Want to introduce your business to  
over 7,000 homes each month?

CONTACT **ROBBIE MATHIS** TO LEARN  
MORE ABOUT ADVERTISING HERE  
**rmathis@wilcolocal.com**  
OR **615-243-2690**



## ASHLEY CARPENTRY



REMODELING | PAINTING | DECKS |  
ROTTEN WOOD REPAIR | HARDWOOD  
FLOORS | TILE WORK | PRIVACY FENCES  
PRESSURE WASHING

40+ YEARS EXPERIENCE | FREE ESTIMATES  
GENERAL CONTRACTOR LICENSED AND INSURED

**BRET ASHLEY 615-812-1124** | SERVING ALL OF MAURY COUNTY





# A1 PROFESSIONAL TREE SERVICE

We save trees and your money.

Emergency Number 24/7/365

## 615-982-2265

WWW.A1PROTREES.COM



PLEASE WORK  
AMERICANS ONLY

**50**  
YEARS  
EXPERIENCE

**TREE PROS**

**100% Customer Satisfaction**  
You don't pay until you're happy!

**NOBODY DOES IT BETTER FOR LESS!**

we **save** trees. we **love** trees.

Do **NOT** sign a contract with the other guys  
until you get our price. **We'll save you money  
and headaches!** We'll do a professional job  
with our state-of-the-art equipment.

- Senior and Military Discounts
- **Fully** Insured for Your Protection
- Specialized in Extra Large and **Dangerous** Trees
- Custom Front and Lakefront Cleaning
- **Free** Evolution of the Integrity of Every Tree Before Purchasing a House or Lot

**FREE STUMP  
GRINDING**

WHEN WE  
REMOVE THE TREE,  
THE STUMP IS FREE!

**EXPIRES 2/29/24**

Other companies make you wait-  
**WHY WAIT?** We have the equipment to  
get the job done! Fully Guaranteed!



# MTB&J

## MID-TENNESSEE BONE & JOINT CLINIC

— A Division of TOA, P.A. —

1050 N JAMES CAMPBELL BLVD.  
COLUMBIA, TENNESSEE  
931-381-2663



**Jeffrey T. Adams, MD**  
Shoulder  
Sports Medicine



**Randall L. Davidson, Jr, MD**  
Foot & Ankle



**A. Lee Hunter, Jr, MD, MBA**  
Hand & Upper Extremity



**Christopher M. Loftis, MD**  
Shoulder & Elbow



**Scott W. McCall, MD**  
Knee Replacement  
Sports Medicine



**Jonathan R. Pettit, MD**  
Sports Medicine



**Zachary K. Pharr, MD**  
Sports Medicine  
Shoulder & Elbow  
Hip Arthroscopy



**Erion Qamirani, MD, PhD**  
Spine



**W. Cason Shirley, MD**  
Joint Replacement  
Sports Medicine



**Carson D. Strickland, MD**  
Foot & Ankle



**Kenneth T. Sykes MD, PhD**  
Interventional Pain Medicine



**J. Fredrick Wade, MD**  
Knee & Hip Replacement  
Lumbar & Cervical Spine

**SERVING MIDDLE TENNESSEE SINCE 1975**

PRSTD STD  
U.S. POSTAGE  
PAID  
FRANKLIN, TN  
#357

ECRWSS  
Local Customer

Imagine your home, totally organized!

Custom Closets  
Garage Cabinets  
Home Offices  
Wall Beds  
Wall Organizers  
Pantries  
Laundries  
Wall Units  
Hobby Rooms  
Garage Flooring  
Media Centers  
and more...



**SPECIAL FINANCING  
FOR 12 MONTHS!**

With approved credit. Call or ask your Designer for details. Not available in all areas.

**40% Off**  
Plus **Free Installation**

PLUS TAKE  
AN EXTRA **10% Off**

Terms and Conditions: 40% off any order of \$1000 or more or 30% off any order of \$700-\$1000 on any complete unit order of custom closet, garage, or home office, and any other products. Take an additional 15% off on any complete unit order. Not valid with any other offer. Free installation with any unit order of \$850 or more. With incoming order, at time of purchase only. Expires 2/29/24. Offer not valid in all regions.



Call for a free in home design consultation and estimate

**615-265-6360**

MT

[closetsbydesign.com](https://closetsbydesign.com)

Locally Owned and Operated. Licensed and Insured.

Follow Us



 **ClosetsbyDesign**