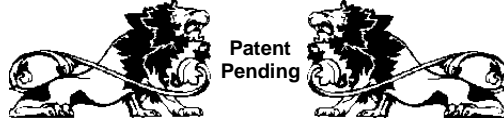


Instructions for Using the Prop-N-Lock

Prop-N-Lock Door Lock

Universal Door Locking Device



- How to Use the **Prop-N-Lock** -

The **Prop-N-Lock** is made from 1" thick aircraft quality aluminum, anodized for long-life and durability. It is manufactured by American craftsmen and assembled with high quality hardware. The **Prop-N-Lock** has 1/8" thick neoprene rubber cushions so that metal never touches any area of the door or doorframe.



Step 1 - Installing the doorframe clamp

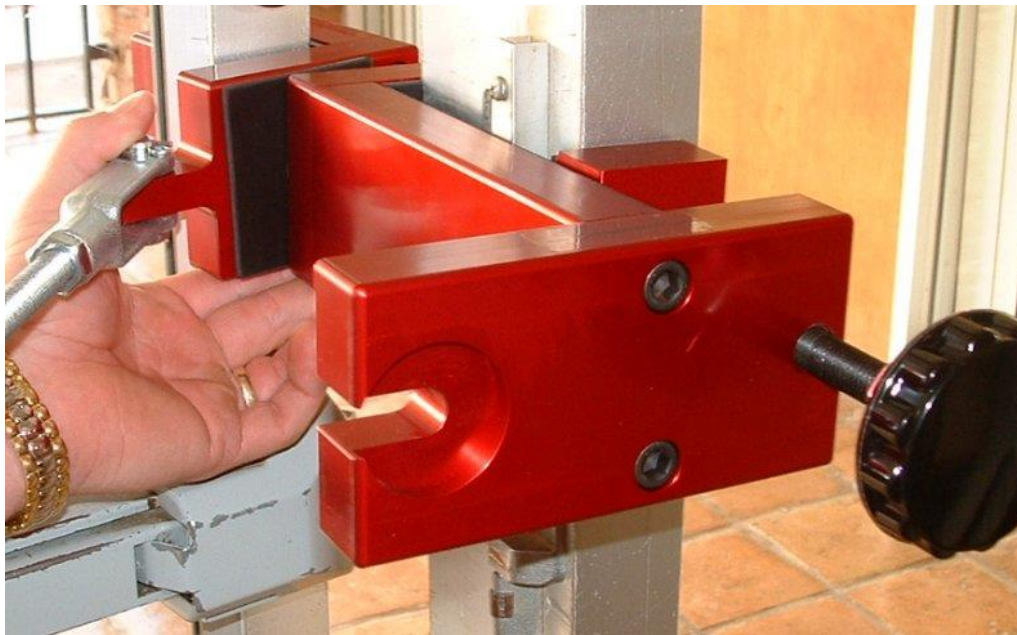
Place the doorframe clamp on the doorframe. Try to use a doorframe that allows you to completely bottom out the clamp to the doorframe. This will create the ideal setup for the Prop-N-Lock to work best. Once the doorframe clamp is in place, tighten by turning the black knob clockwise until the clamp is good and snug. **Caution: Hand tighten only. The use of pliers or wrenches will void the warranty.**

Instructions for Using the Prop-N-Lock



Step 2 - Installing the door claw

Ensure that the nylon tip of the setscrew is flush with the inside of the door claw, then place it on the door, bottoming it out. **Do not tighten yet.** Holding the door claw in place, allow the door to close and line it up to the doorframe clamp horizontally.



Instructions for Using the Prop-N-Lock



Step 3 - Tightening the door claw

When the door claw is lined up, open the door and using the supplied T-handle Allen wrench, turn the setscrew to where it just contacts the door. Then tighten one-half turn

maximum. Caution: Do not over tighten, damage to the door could result.



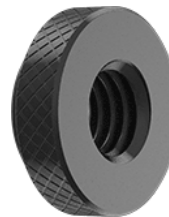
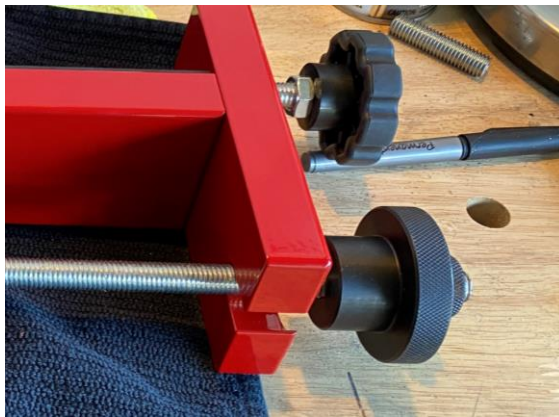
Step 4 - Locking the Prop-N-Lock

Make sure the compression knob is unthreaded far enough to allow the threaded pivot rod to slide into the doorframe-locking notch. Once the pivot rod is in place, tighten the compression knob **ONLY** far enough to make the door "rigid". It is neither necessary nor desirable to over tighten! Caution: Hand tighten only. The use of pliers or wrenches will void the warranty and possibly damage the door or doorframe.

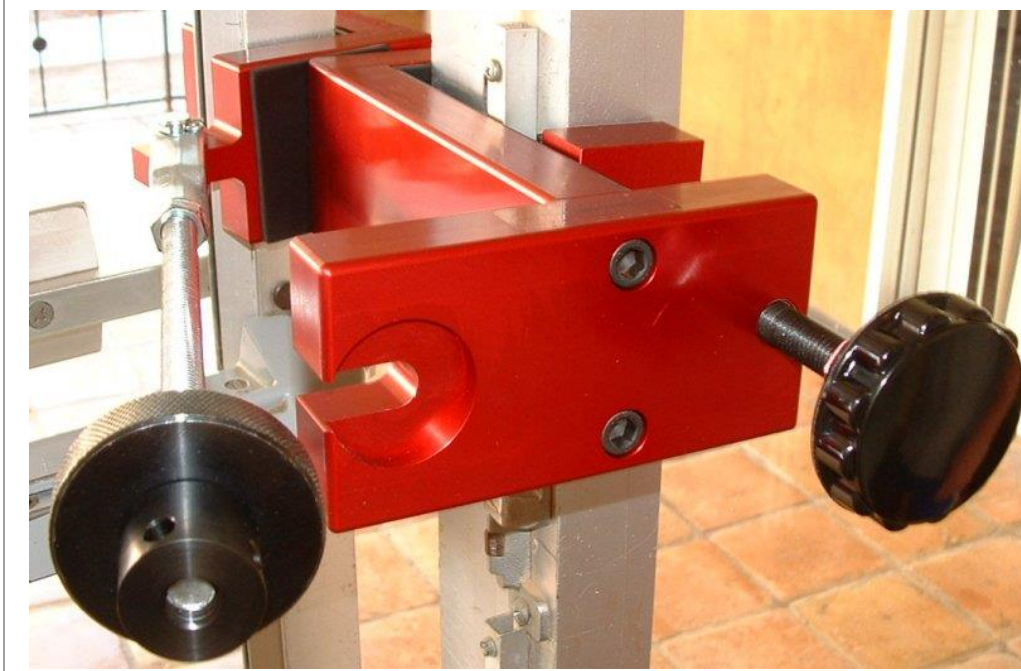
Instructions for Using the Prop-N-Lock

Step 5 -Using the compression knob lock nut

Next, finger-tighten the lock nut snugly against the compression knob, and reverse the compression knob until you feel it not moving. The lock nut is machined at 2 degrees. This will "lock" the compression knob, not allowing it to be easily loosened. This is an additional safety feature that would make it difficult for an outside individual to reach in and unscrew the compression knob. To release it, hold the lock nut and turn the compression knob forward. This will release it. *(The first picture is the old lock nut and second is the new photo of current lock nut. New instructions will be released soon.)*



Instructions for Using the Prop-N-Lock



Step 6 -Unlocking the Prop-N-Lock

Use the T-handle to keep the compression locknut nut from turning, then turn the compression knob one-half a turn tighter **maximum**. Next, unscrew the compression knob lock nut, then unscrew the compression knob enough to swing out the pivot rod.

Voila! All the steps above will take well under a minute, normally about 15 to 30 seconds with very little practice. **Now you are all set to work in complete safety and security.**

© 2002-2023 Prestige Floor and Carpet Care LLC. All Rights reserved.