



ASSEMBLY MANUAL FOR JKU 2011-2018

EZTRUNK.COM

BEFORE BEGINNING, LOOK AT ASSEMBLY VIDEO ON EZTRUNK.COM



Customer Service

If you have a question or concern

EMAIL US: SERVICE@EZTRUNK.NET

or call 203-591-9060

Monday-Friday 8:30am-4:30pm EST

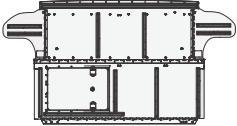
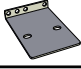


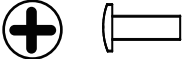





PDF manual on www.EZTRUNK.com

DO NOT RETURN TO THE STORE!

**CUSTOMER SERVICE:
SERVICE@EZTRUNK.NET
CALL: 203-591-9060**

BEFORE BEGINNING, LOOK AT ASSEMBLY VIDEO ON EZTRUNK.COM

Please read instructions fully before beginning assembly

NO	Illustration	Description	Part #	QTY.
1		Trunk	201141	1
2		Bottom Plate_Driver Side	201146	2
3		Bottom Plate_Passenger	201147	1
4		Pan Head Bolt M6x40	76401	2
5		Bolt M5x6	55061	6
6		Star Wrench_T27	60027	1
7	 (On Trunk)	Rubber Strip _ Soft Top	00214	1
8		Rubber Strip _ Hard Top	00134	1
9		Webbing Hook_Driver	11256	1
10		Webbing Hook_Passenger	11257	1

RECOMMENDED TOOLS

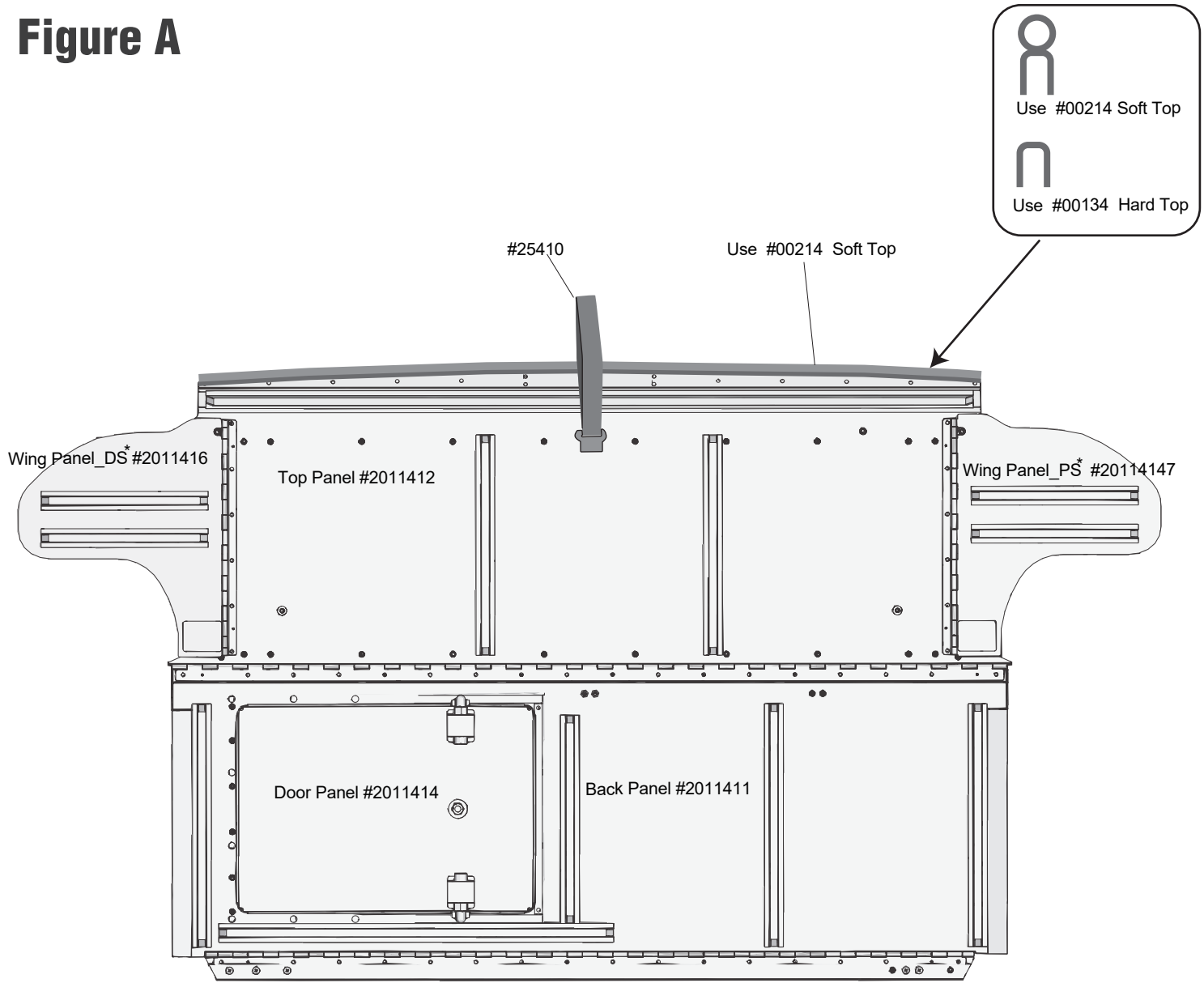


PHILLIPS SCREWDRIVER

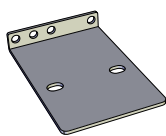
PLEASE NOTE:

DO NOT USE ELECTRIC TOOLS THIS WILL CAUSE SCREWS TO STRIP

Figure A

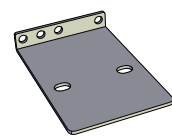


Driver Side

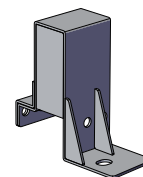


#201146

Passenger Side



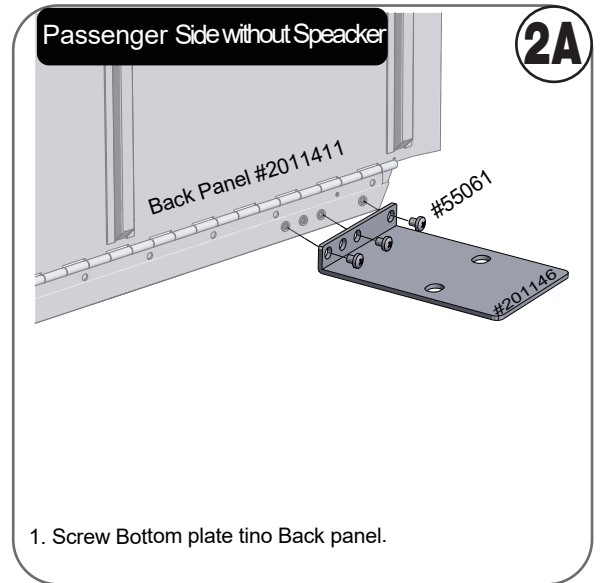
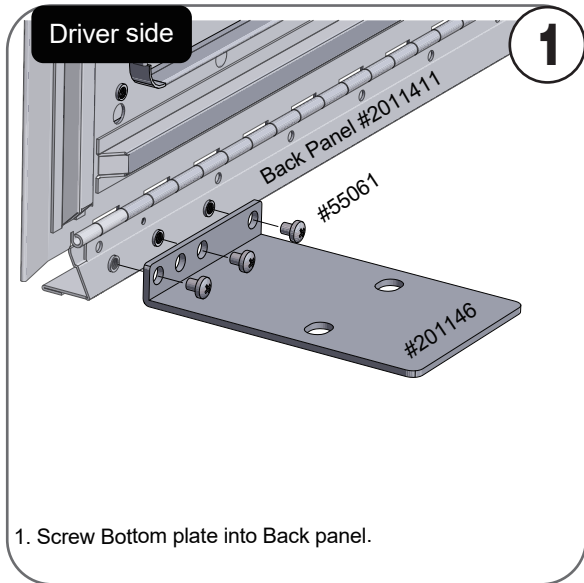
#201146



#201147
Speaker Version

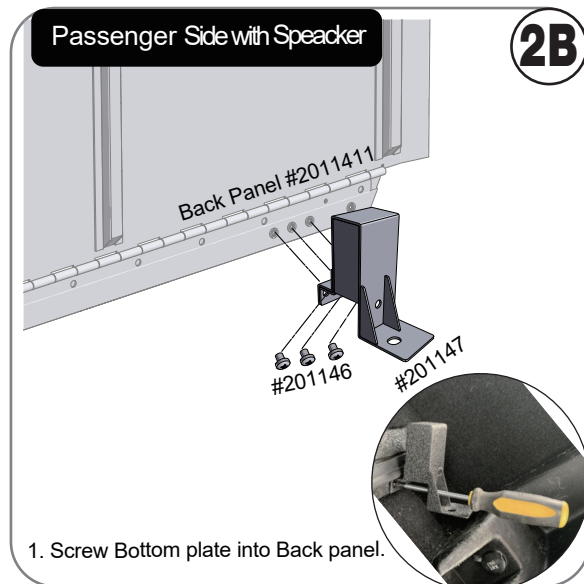
* DS = Driver Side
PS = Passenger Side

BEFORE BEGINNING, LOOK AT ASSEMBLY VIDEO ON EZTRUNK.COM



▼

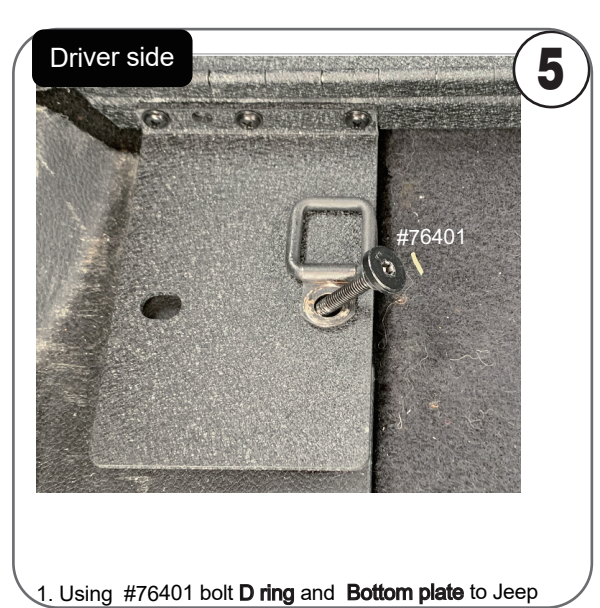
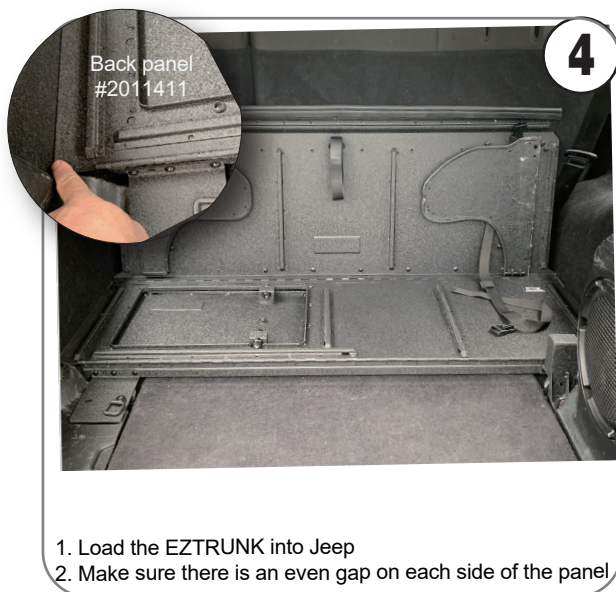
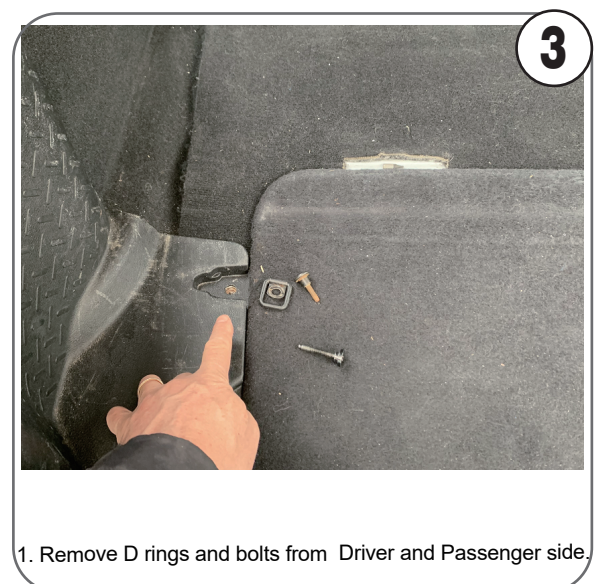
PLEASE NOTE:
DO NOT USE
ELECTRIC TOOLS
THIS WILL
CAUSE SCREWS
TO STRIP



**USE SCREW
DRIVER**

**DO NOT
OVER
TIGHTEN**

▲



BEFORE BEGINNING, LOOK AT ASSEMBLY VIDEO ON EZTRUNK.COM

Passenger Side without Speaker **6A**



#76401

1. Using #76401 bolt D ring and **Bottom plate** into Jeep

Passenger Side with Speaker **6B**



#76401

1. Using #76401 bolt D ring and **Bottom plate** into Jeep

Driver side **7**



11256

1. Remove upper bolt only
2. Using same bolt assemble **#11256 webbing hook**


Passenger side **8**



11257

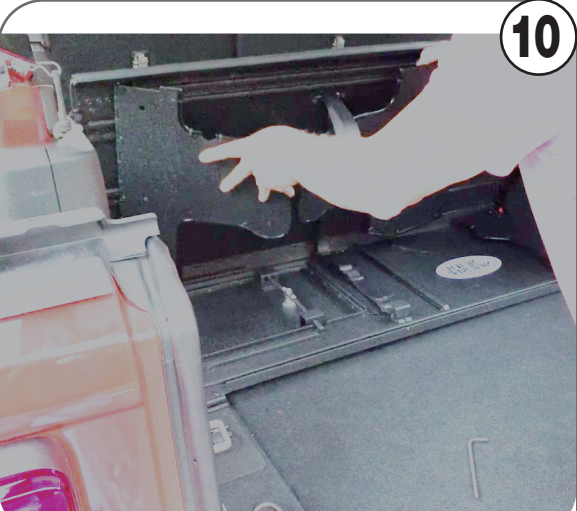
1. Locate D Ring on the passenger side near the door hinge on the bottom
2. Remove bolt and reassemble with **#11257 webbing hook**

How to use EZTRUNK **9**



1. Pull EZTRUNK up with handle

10



1. Flip open both side Wing panels

CUSTOMER SERVICE:
SERVICE@EZTRUNK.NET
CALL: 203-591-9060



11

Hold both wing panels slowly put down top panel.



12

Driver side

1. Slide webbing loop in place
2. Secure EZTRUNK by pulling on the end of the webbing



Passenger side

13

1. Slide webbing loop in place
2. Secure EZTRUNK by pulling on the end of the webbing



14

DO NOT OVER TIGHTEN WEBBING



SOFT TOP

THIS RUBBER PIECE COMES ON EZTRUNK AND IS FOR SOFT TOP



HARD TOP

IF CHANGING TO HARD TOP REMOVE RUBBER PIECE USED FOR SOFT TOP AND REPLACE WITH HARD TOP RUBBER

Customer Service

If you have a question or concern

EMAIL US: SERVICE@EZTRUNK.NET

or call 203-591-9060

Monday-Friday 8:30am-4:30pm EST

PDF manual on www.EZTRUNK.com

DO NOT RETURN TO THE STORE!