

WHEN INSTALLING AN EZTRUNK with hardtop wire & hose

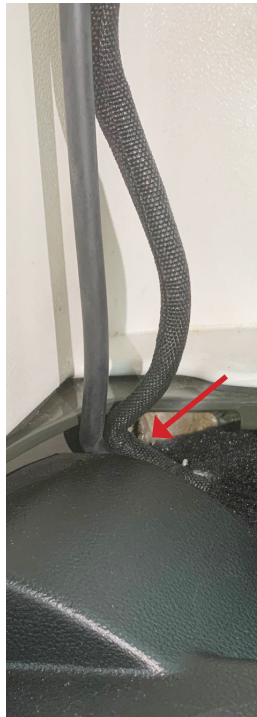
A1 & A2

When installing the EZTRUNK with the hardtop on, there will be a wire and a hose in the back corner, take them both and push them in the corner before putting EZTRUNK in place.

A1



A2



B1 & B2

If the wires are there but not connected to the hardtop then take the wires and hose then lift the plastic on the side by the rollbar and place the wires under the plastic for storage. This needs to be done before the EZTRUNK is placed in an upright closed secure position.

B1



B2

