



DEPARTMENT OF REGULATORY AND ECONOMIC RESOURCES (RER)  
BOARD AND CODE ADMINISTRATION DIVISION

**NOTICE OF ACCEPTANCE (NOA)**

MIAMI-DADE COUNTY  
PRODUCT CONTROL SECTION

11805 SW 26 Street, Room 208  
Miami, Florida 33175-2474  
T (786) 315-2590 F (786) 315-2599

[www.miamidade.gov/economy](http://www.miamidade.gov/economy)

**York International, Inc. subs. of Johnson Controls**  
3110 N. Mead Street  
Wichita, Kansas 67219

**SCOPE:**

This NOA is being issued under the applicable rules and regulations governing the use of construction materials. The documentation submitted has been reviewed and accepted by Miami-Dade County RER-Product Control Section to be used in Miami-Dade County and other areas where allowed by the Authority Having Jurisdiction (AHJ).

This NOA shall not be valid after the expiration date stated below. The Miami-Dade County Product Control Section (In Miami-Dade County) and/ or the AHJ (in areas other than Miami-Dade County) reserve the right to have this product or material tested for quality assurance purposes. If this product or material fails to perform in the accepted manner, the manufacturer will incur the expense of such testing and the AHJ may immediately revoke, modify, or suspend the use of such product or material within their jurisdiction. RER reserves the right to revoke this acceptance, if it is determined by Miami-Dade County Product Control Section that this product or material fails to meet the requirements of the applicable building code.

This product is approved as described herein, and has been designed to comply with the Florida Building Code, including the High Velocity Hurricane Zone.

**DESCRIPTION: OD Condensing Units with Steel Tie-Down Clips for At-Grade and Rooftop Applications**

**APPROVAL DOCUMENT:** Drawing No. 15-2783, titled "OD Condensing Units At-Grade and Rooftop Structural Applications", sheets 1 through 6 of 6, dated 02/24/2016, with last revision dated 05/29/2018, prepared by Engineering Express, signed and sealed by Frank L. Bennardo, P.E. on 04/30/2019, bearing the Miami-Dade County Product Control revision stamp with the Notice of Acceptance number and expiration date by the Miami-Dade County Product Control Section.

**MISSILE IMPACT RATING: None**

**LABELING:** Each unit shall bear a permanent label with the manufacturer's name or logo, city, state, model/ series, and following statement: "Miami-Dade County Product Control Approved", unless otherwise noted herein.

**RENEWAL** of this NOA shall be considered after a renewal application has been filed and there has been no change in the applicable building code negatively affecting the performance of this product.

**TERMINATION** of this NOA will occur after the expiration date or if there has been a revision or change in the materials, use, and/ or manufacture of the product or process. Misuse of this NOA as an endorsement of any product, for sales, advertising or any other purposes shall automatically terminate this NOA. Failure to comply with any section of this NOA shall be cause for termination and removal of NOA.

**ADVERTISEMENT:** The NOA number preceded by the words Miami-Dade County, Florida, and followed by the expiration date may be displayed in advertising literature. If any portion of the NOA is displayed, then it shall be done in its entirety.

**INSPECTION:** A copy of this entire NOA shall be provided to the user by the manufacturer or its distributors and shall be available for inspection at the job site at the request of the Building Official.

This NOA revises NOA # 16-0418.09 and consists of this page 1 and evidence pages E-1 and E-2, as well as approval document mentioned above.

The submitted documentation was reviewed by **Sifang Zhao, P.E.**



S.Z.  
01/03/2019

NOA No. 19-0401.05  
Expiration Date: July 12, 2023  
Approval Date: July 03, 2019  
Page 1

**York International, Inc. subs. of Johnson Controls**

**NOTICE OF ACCEPTANCE: EVIDENCE SUBMITTED**

**1. Evidence submitted under NOA # 16-0418.09**

**A. DRAWINGS**

1. Drawing No. **15-2783**, titled "OD Condensing Units At-Grade and Rooftop Structural Applications", sheets 1 through 10 of 10, dated 02/24/2016, with last revision dated 05/29/2018, prepared by Engineering Express, signed and sealed by Frank L. Bennardo, P.E.

**B. TESTS**

1. Test report on Uniform Static Air Pressure Test per FBC, TAS 202-94 of OD Condensing Units with Composite Base Pan with YXV, YZV, YXT, and YZT Cabinetry, prepared by American Test Lab of South Florida, Test Report No. **0127.01-17**, dated 03/01/2017, signed and sealed by Stephen W. Warter, P.E.
2. Test report on Uniform Static Air Pressure Test per FBC, TAS 202-94 along with marked-up drawings and installation diagram of OD Condensing Units with YCJF, CZF, YFE, RAC, YHE and RHP Cabinetry, prepared by American Test Lab of South Florida, Test Report No. **1029.01-15**, dated 12/12/2015, signed and sealed by Stephen W. Warter, P.E.

**C. CALCULATIONS**

1. Anchorage calculations prepared by Engineering Express, dated 03/15/2018, signed and sealed by Frank L. Bennardo, P.E.
2. Anchorage calculations prepared by Engineering Express, dated 03/18/2016, signed and sealed by Frank L. Bennardo, P.E.

**D. QUALITY ASSURANCE**

1. Miami-Dade Department of Regulatory and Economic Resources (RER)

**E. MATERIAL CERTIFICATIONS**

1. None.

**F. STATEMENT**

1. Statement letter of code conformance to the 5<sup>th</sup> edition (2014) FBC issued by Engineering Express, dated 04/04/2016, signed and sealed by Frank L. Bennardo, P.E.
2. Statement letter of no financial interest issued by Engineering Express, dated 03/18/2016, signed and sealed by Frank L. Bennardo, P.E.



---

Sifang Zhao, P.E.  
Product Control Examiner  
NOA No. 19-0401.05  
Expiration Date: July 12, 2023  
Approval Date: July 03, 2019

**NOTICE OF ACCEPTANCE: EVIDENCE SUBMITTED**

**2. New evidence submitted**

**A. DRAWINGS**

1. Drawing No. **15-2783**, titled "OD Condensing Units At-Grade and Rooftop Structural Applications", sheets 1 through 6 of 6, dated 02/24/2016, with last revision dated 05/29/2018, prepared by Engineering Express, signed and sealed by Frank L. Bennardo, P.E. on 04/30/2019.

**B. TESTS**

1. None.

**C. CALCULATIONS**

1. None.

**D. QUALITY ASSURANCE**

1. Miami-Dade Department of Regulatory and Economic Resources (RER)

**E. MATERIAL CERTIFICATIONS**

1. None.

**F. STATEMENT**

1. Drawing No. **15-2783** statement of code conformance to the 6<sup>th</sup> edition (2017) FBC issued by Engineering Express, dated 04/30/2019, signed and sealed by Frank L. Bennardo, P.E.



Sifang Zhao, P.E.

Product Control Examiner

NOA No. 19-0401.05

Expiration Date: July 12, 2023

Approval Date: July 03, 2019

# YORK INTERNATIONAL CORP.

## OD CONDENSING UNITS

### AT-GRADE AND ROOFTOP STRUCTURAL APPLICATIONS

#### SCOPE:

THIS ENGINEERED DRAWING IS INTENDED TO CERTIFY THE CABINETRY AND TIE-DOWN TO HOST ATTACHMENTS FOR THE UNIT MODELS DESCRIBED HEREIN FOR WIND LOADING ONLY. THIS CERTIFICATION DOES NOT INCLUDE IMPACT RESISTANCE.

#### TEST REPORT(S):

#1029.01-15 AND #0127.01-17 BY AMERICAN TEST LAB OF SOUTH FLORIDA

#### APPROVED DESIGN CRITERIA:

MAXIMUM DESIGN WIND PRESSURES		
ROOF MOUNT	LATERAL	UPLIFT
	200 PSF	100 PSF
GROUND MOUNT	LATERAL	UPLIFT
	60 PSF	30 PSF

APPROVED CHASSIS TYPES*			
CHASSIS TYPE	MAX DIMENSIONS (DEPTHxLENGTHxHEIGHT), †	SHEET	CLIP
(TABLE 2) E-CHASSIS	34.25" x 38.00" x 46.50"	2/6	C
(TABLE 4) Z-CHASSIS	34.00" x 34.00" x 40.25"	3/6	B
(TABLE 3) Y-CHASSIS	42.25" x 34.00" x 40.00"	4/6	A

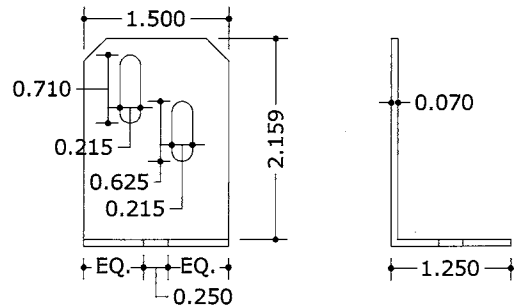
\*THE UNIT CHASSIS LISTED ABOVE WERE TESTED AND DESIGNED AS WORST CASE CONFIGURATIONS. A LIST OF ALL APPROVED MODELS CAN BE REFERENCED ON SHEETS 5-10 IN THIS DRAWING. IT IS THE MANUFACTURER'S RESPONSIBILITY TO ENSURE THAT THE LISTED ADDITIONAL UNITS HAVE IDENTICAL CONSTRUCTION AND COMPONENTS AS THOSE LISTED ABOVE AND ARE OF EQUAL OR LESSER SIZE (WIDTH, DEPTH, HEIGHT).

†DIMENSIONS SHOWN MEASURED FROM OUTERMOST POINTS OF UNIT, INCLUDING SCREW HEADS.

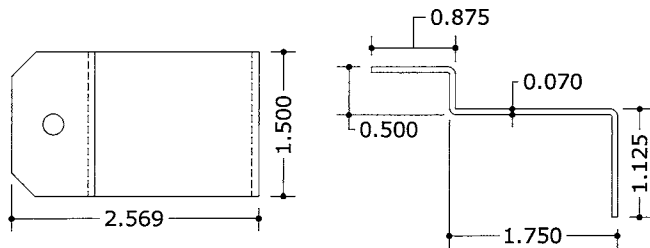
TABLE 1: UNIT ANCHORAGE TO HOST (ALL UNITS)

SUBSTRATE	ANCHOR TYPE
CONCRETE (3 KSI MIN)	1/4" POWERS WEGDE BOLT W/ 2" MIN EMBED & 3" MIN EDGE DIST OR
	1/4" ITW TAPCON W/ 1 3/4" EMBED & 2 1/2" MIN EDGE DIST OR
	1/4" ELCO ULTRACON W/ 1 3/4" EMBED & 2 1/2" MIN EDGE DIST
WOOD (G=0.55 MIN)	3/8" LAG SCREW W/ 1 3/4" MIN THREAD PENETRATION & 1" MIN EDGE DIST
ALUMINUM (1/8" 6063-T6 MIN)	1/4"-20X3/4" LONG SS HH BOLTS W/ WASHERS AND NUTS
STEEL (15 GA MIN)	1/4"-20X3/4" LONG SS HH BOLTS W/ WASHERS AND NUTS

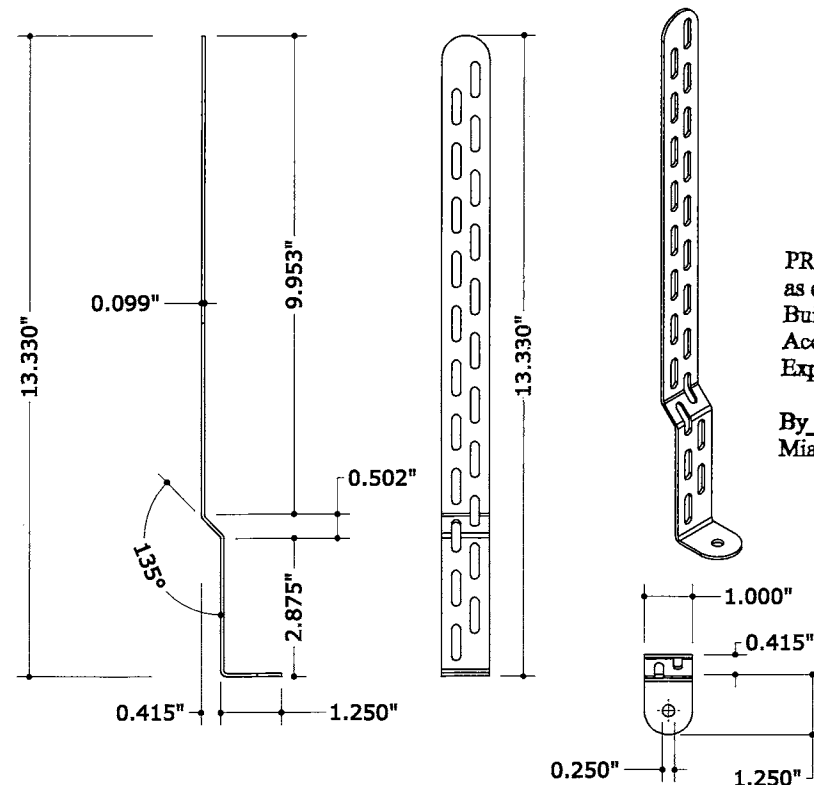
- WOOD AND CONCRETE SUBSTRATES NOT APPROVED FOR ROOFTOP APPLICATIONS



**1** TIE DOWN CLIP 'A'  
**1** N.T.S. PAINTED GALV. STEEL (Fy=33KSI MIN.)



**2** TIE DOWN CLIP 'B'  
**1** N.T.S. GALV. STEEL (Fy=33KSI MIN.)



**3** TIEDOWN CLIP 'C'  
**1** N.T.S. GALV. STEEL (Fy=33KSI MIN.)

LATERAL AND UPLIFT DESIGN PRESSURES CALCULATED FOR USE WITH THESE UNITS SHALL BE DETERMINED BY OTHERS ON A JOB-SPECIFIC BASIS IN ACCORDANCE WITH THE GOVERNING CODE. SITE-SPECIFIC LOAD REQUIREMENTS FOR WIND LOAD SHALL BE DETERMINED IN ACCORDANCE WITH ASCE 7 AND THE FLORIDA BUILDING CODE SIXTH EDITION (2017) (AS APPLICABLE) BY SEPARATE ENGINEERING CERTIFICATION AND SHALL BE LESS THAN OR EQUAL TO THE LATERAL OR UPLIFT DESIGN PRESSURE CAPACITY VALUES LISTED HEREIN FOR ANY ASSEMBLY AS SHOWN.

ALLOWABLE LOAD VALUES ARE DERIVED FROM THE TEST REPORT(S) #1029.01-15 AND 0127.01-17 BY AMERICAN TEST LAB OF SOUTH FLORIDA

#### GENERAL NOTES:

- THESE SYSTEMS HAVE BEEN DESIGNED AND SHALL BE FABRICATED IN ACCORDANCE WITH THE REQUIREMENTS OF THE FLORIDA BUILDING CODE SIXTH EDITION (2017) & ASCE 7-10. THESE SYSTEMS MAY BE USED WITHIN AND OUTSIDE THE HIGH VELOCITY HURRICANE ZONE. THESE DESIGNS ARE NOT INTENDED TO CERTIFY IMPACT RESISTANCE OF THE MECHANICAL UNIT CABINETRY. TESTS WERE PERFORMED IN ACCORDANCE WITH TAS 202 AND ASTM E330.
- NO 33-1/3% INCREASE IN ALLOWABLE STRESS HAS BEEN USED IN THE DESIGN OF THIS SYSTEM.
- DESIGN & CERTIFICATION OF THE UNIT CABINETRY IS APPROVED THROUGH TEST REPORT #1029.01-15 & #0127.01-17 BY AMERICAN TEST LAB OF SOUTH FLORIDA.
- ALL DIMENSIONS AND THE MINIMUM WEIGHTS OF MECHANICAL UNITS SHALL CONFORM TO LIMITATIONS STATED HEREIN. ALL MECHANICAL SPECIFICATIONS (CLEAR SPACE, TONNAGE, ETC.) SHALL BE AS PER MANUFACTURER RECOMMENDATIONS AND ARE THE EXPRESS RESPONSIBILITY OF THE CONTRACTOR.
- ALL SHEET METAL SCREWS USED TO FASTEN BRACKETS TO MECHANICAL UNITS SHALL BE #10 (14 MIN THREADS PER INCH) ASTM F593 410 STAINLESS STEEL OR EQUIVALENT ONLY. BOLTS USED TO FASTEN ALUMINUM ANGLES TO SUPPORTING FRAME (BY OTHERS) SHALL BE ASTM F593 410 STAINLESS STEEL OR EQUIVALENT AND SHALL UTILIZE SAE GRADE WASHERS & NUTS. PROVIDE (5) PITCHES MINIMUM PAST THE THREAD PLANE FOR SHEET METAL SCREWS. ALL FASTENERS SHALL HAVE APPROPRIATE CORROSION PROTECTION TO PREVENT ELECTROLYSIS. ALL FASTENER CONNECTIONS TO ALUMINUM SHALL PROVIDE 2xDIAMETER EDGE DISTANCE.
- THE CONTRACTOR IS RESPONSIBLE TO INSULATE ALL MEMBERS FROM DISSIMILAR MATERIALS TO PREVENT ELECTROLYSIS.
- ELECTRICAL GROUND, WHEN REQUIRED, TO BE DESIGNED & INSTALLED BY OTHERS.
- THE ADEQUACY OF ANY EXISTING STRUCTURE TO WITHSTAND SUPERIMPOSED LOADS SHALL BE VERIFIED BY THE ONSITE DESIGN PROFESSIONAL AND IS NOT INCLUDED IN THIS CERTIFICATION. EXCEPT AS EXPRESSLY PROVIDED HEREIN, NO ADDITIONAL CERTIFICATIONS OR AFFIRMATIONS ARE INTENDED.
- THE SYSTEM DETAILED HEREIN IS GENERIC AND DOES NOT PROVIDE INFORMATION FOR A SPECIFIC SITE. FOR SITE CONDITIONS DIFFERENT FROM THE CONDITIONS DETAILED HEREIN, A LICENSED ENGINEER OR REGISTERED ARCHITECT SHALL PREPARE SITE SPECIFIC DOCUMENTS FOR USE IN CONJUNCTION WITH THIS DOCUMENT.
- WATER-TIGHTNESS OF EXISTING HOST SUBSTRATE SHALL BE THE FULL RESPONSIBILITY OF THE INSTALLING CONTRACTOR. CONTRACTOR SHALL ENSURE THAT ANY REMOVED OR ALTERED WATERPROOFING MEMBRANE IS RESTORED AFTER FABRICATION AND INSTALLATION OF STRUCTURE PROPOSED HEREIN. THIS ENGINEER SHALL NOT BE RESPONSIBLE FOR ANY WATERPROOFING OR LEAKAGE ISSUES WHICH MAY OCCUR AS WATER-TIGHTNESS SHALL BE THE FULL RESPONSIBILITY OF THE INSTALLING CONTRACTOR.
- CONDENSING UNIT COMPONENTS SHALL BE FASTENED WITH 3/16"-16X3/8 LONG HH SMS AT PRE-PUNCHED HOLES, U.N.O.
- ALL STEEL UNIT COMPONENTS SHALL HAVE AN Fy=33KSI MIN.

FRANK L. BENNARDO, P.E.  
 PE# 0046549

06/13/2019

ENGINEERING EXPRESS  
 CORPORATE OFFICE: 106 DEERFIELD BEACH, FL 33442  
 P: (954) 354-0660 F: (954) 354-0483  
 E: HELLO@ENGINEERINGEXPRESS.COM  
 CERT OF AUTH #9885

YORK INTERNATIONAL CORP.  
 3110 North Mead Street  
 Wichita, KS 67219  
 OD CONDENSING UNIT CABINETRY  
 FLORIDA BUILDING CODE  
 MIAMI-DADE NOTICE OF ACCEPTANCE

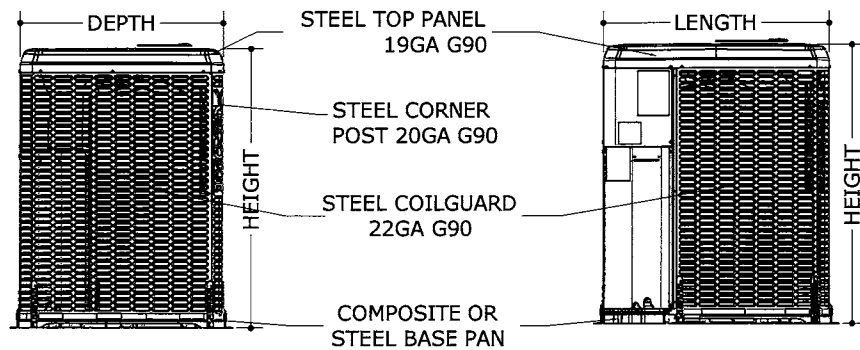
REMARKS	DATE
INIT ISSUE	02/24/16
MD COMMENTS & 2017 FBC	03/01-18
MD COMMENTS	5/29/18

15-2783  
 SCALE: NTS UNLESS NOTED  
 1 OF 6

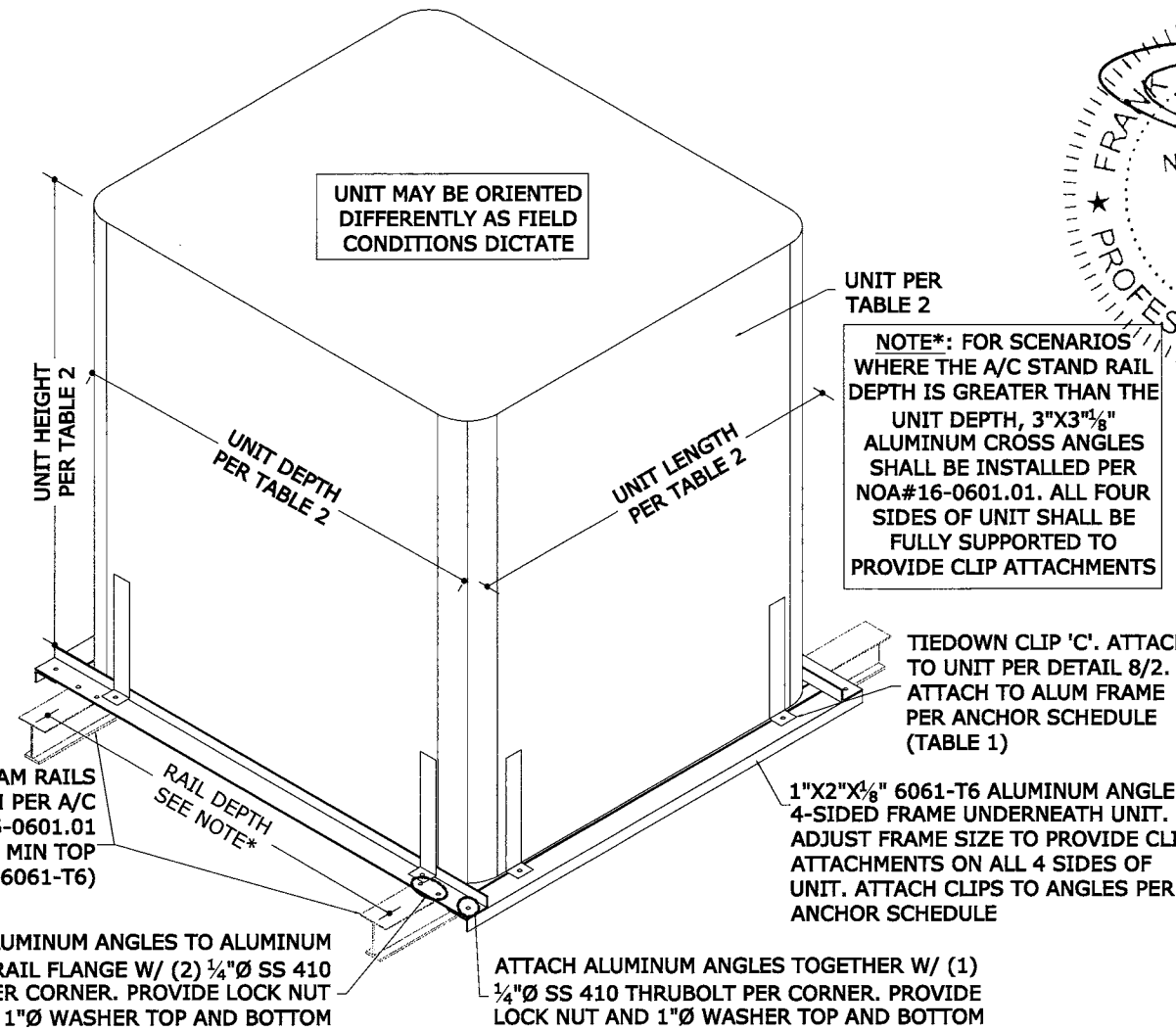
V:\projects\15-2783 OD Condensing Unit Test Protocol\WP\NOA Submittal\2019 NOA Revision\15-2783\_z OD Condensing Unit (NOA).dwg  
 06/13/2019 - 9:04am  
 riskn

# YORK INTERNATIONAL CORP.

## OD CONDENSING UNITS (E-CHASSIS)



SEE TABLE 2 ON SHEET 5 FOR ADDITIONAL APPROVED UNITS PER THE TESTED MODEL ON THIS SHEET



NOTE\*: FOR SCENARIOS WHERE THE A/C STAND RAIL DEPTH IS GREATER THAN THE UNIT DEPTH, 3"X3 1/8" ALUMINUM CROSS ANGLES SHALL BE INSTALLED PER NOA#16-0601.01. ALL FOUR SIDES OF UNIT SHALL BE FULLY SUPPORTED TO PROVIDE CLIP ATTACHMENTS

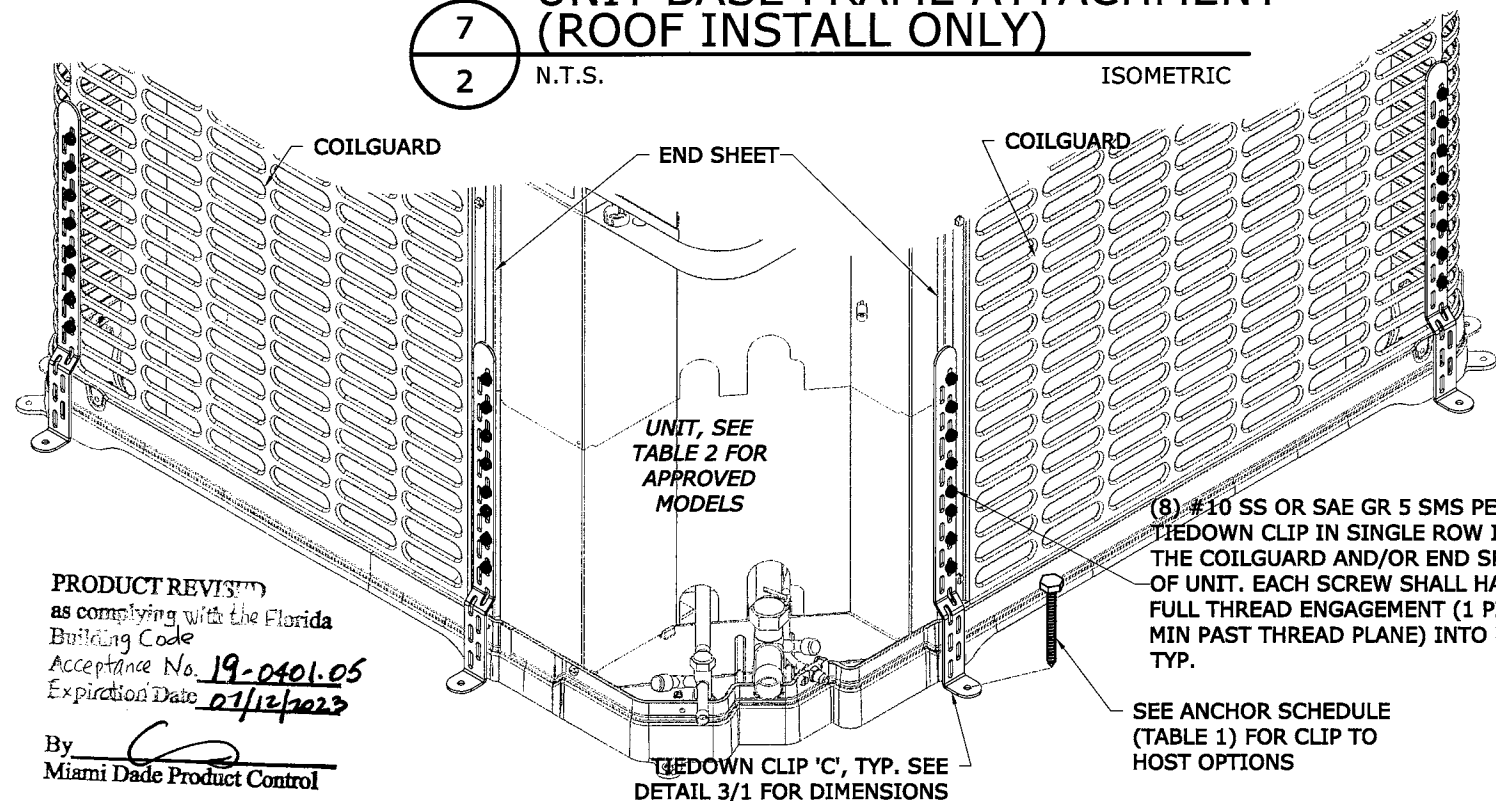
ALUMINUM I-BEAM RAILS UNDERNEATH PER A/C STAND NOA#16-0601.01 (0.094" THICK MIN TOP FLANGE 6061-T6)

ATTACH ALUMINUM ANGLES TO ALUMINUM I-BEAM RAIL FLANGE W/ (2) 1/4"Ø SS 410 THURBOLT PER CORNER. PROVIDE LOCK NUT AND 1"Ø WASHER TOP AND BOTTOM

ATTACH ALUMINUM ANGLES TOGETHER W/ (1) 1/4"Ø SS 410 THURBOLT PER CORNER. PROVIDE LOCK NUT AND 1"Ø WASHER TOP AND BOTTOM

### UNIT BASE FRAME ATTACHMENT (ROOF INSTALL ONLY)

7  
2 N.T.S.



PRODUCT REVIEWED as complying with the Florida Building Code Acceptance No. 19-0401.05 Expiration Date 02/12/2023

By [Signature]  
Miami Dade Product Control

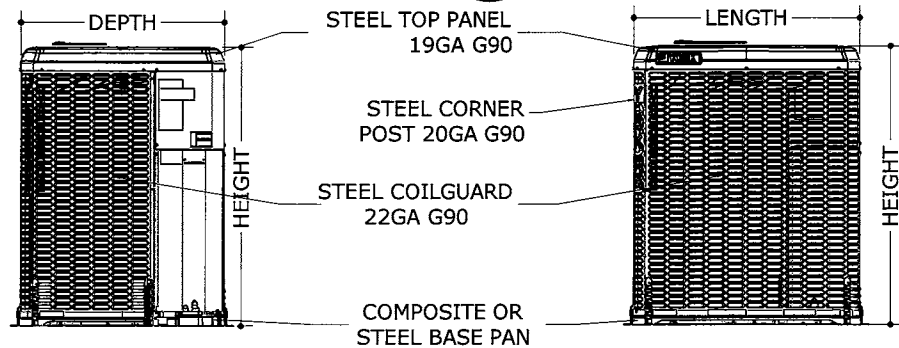
### 8 2 N.T.S. E-CHASSIS TIEDOWN DIRECTIVE (CLIP C) ISOMETRIC

### 1 E-CHASSIS FRONT VIEW

2 SCALE: NTS ELEVATION

### 2 E-CHASSIS RIGHT VIEW

2 SCALE: NTS ELEVATION

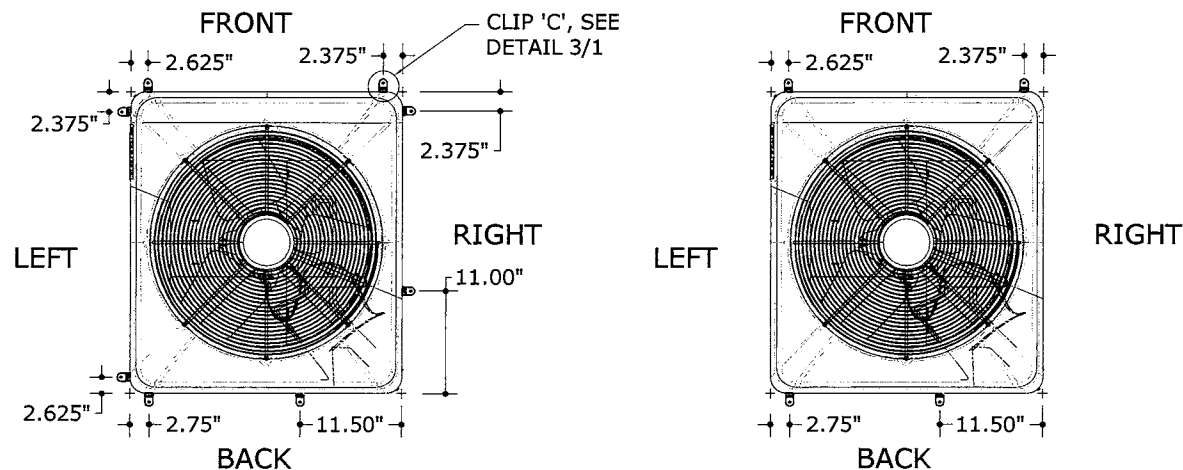


### 3 E-CHASSIS BACK VIEW

2 SCALE: NTS ELEVATION

### 4 E-CHASSIS LEFT VIEW

2 SCALE: NTS ELEVATION



### 5 E-CHASSIS TIEDOWN (ROOF INSTALL)

2 SCALE: NTS PLAN VIEW

### 6 E-CHASSIS TIEDOWN (GROUND INSTALL)

2 SCALE: NTS PLAN VIEW

FIGURES 5/2 AND 6/2 NOTE: THE CLIP LOCATIONS SHOWN PERTAIN TO THE TESTED UNIT MODELS (YXV60B21 AND YFE60B21S). THE CLIP LOCATIONS FOR ALTERNATE MODELS (TABLE 2) MAY DIFFER SLIGHTLY BUT SHALL BE WITHIN 4.0" MAXIMUM OF THE LOCATIONS SHOWN AND SHALL HAVE AN EQUAL NUMBER OF CLIPS PER SIDE AS SHOWN (ROOF INSTALL - 2 CLIPS PER SIDE; GROUND INSTALL - 2 CLIPS ON FRONT SIDE AND 2 CLIPS ON BACK SIDE). CONCRETE PAD DESIGNS FOR GROUND INSTALLATION ARE NOT INCLUDED IN THIS CERTIFICATION

FRANK L. BENNARDO, P.E.  
PE# 0046549  
06/13/2019  
PROFESSIONAL ENGINEER  
IF CHECKED, CERTIFYING P.E. YEARS BELOW

ENGINEERING EXPRESS  
CORPORATE OFFICE:  
160 SW 12th AVE, SUITE 2106  
DEERFIELD BEACH, FL 33442  
P: (954) 354-0660 F: (954) 354-0443  
E: HELLO@ENGINEERINGEXPRESS.COM  
ENGINEERINGEXPRESS.COM  
CERT OF AUTH #9885

YORK INTERNATIONAL CORP.  
3110 North Mead Street  
Wichita, KS 67219

OD CONDENSING UNIT CABINETRY  
FLORIDA BUILDING CODE  
MIAMI-DADE NOTICE OF ACCEPTANCE

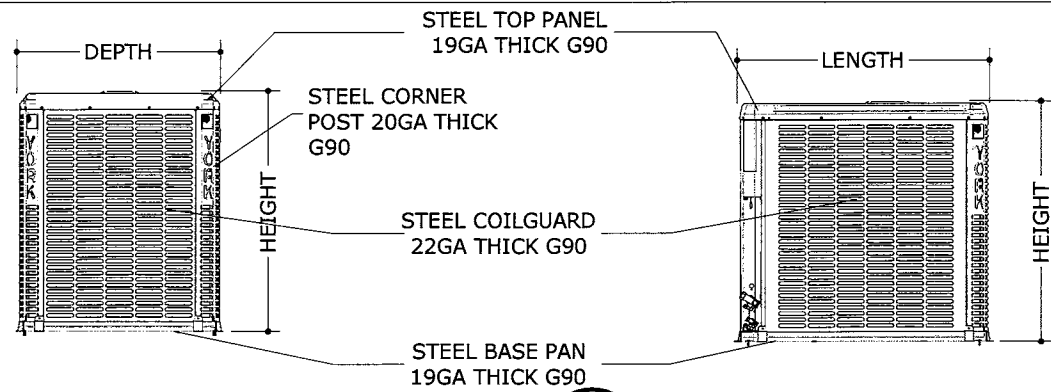
REMARKS	DRWN	CHKD	DATE
INIT ISSUE	RWN	FLB	02/24/16
MD COMMENTS & 2017 FBC	RWN	FLB	03/01-18
MD COMMENTS	RWN	FLB	5/29/18

15-2783  
SCALE: NTS UNLESS NOTED

2 OF 6

# YORK INTERNATIONAL CORP.

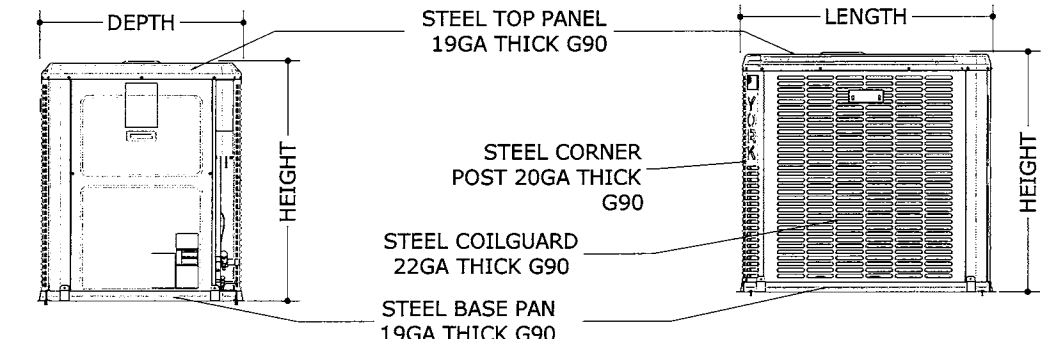
## OD CONDENSING UNITS (Z-CHASSIS)



SEE TABLE 4 ON SHEET 6 FOR ADDITIONAL APPROVED UNITS PER THE TESTED MODEL ON THIS SHEET

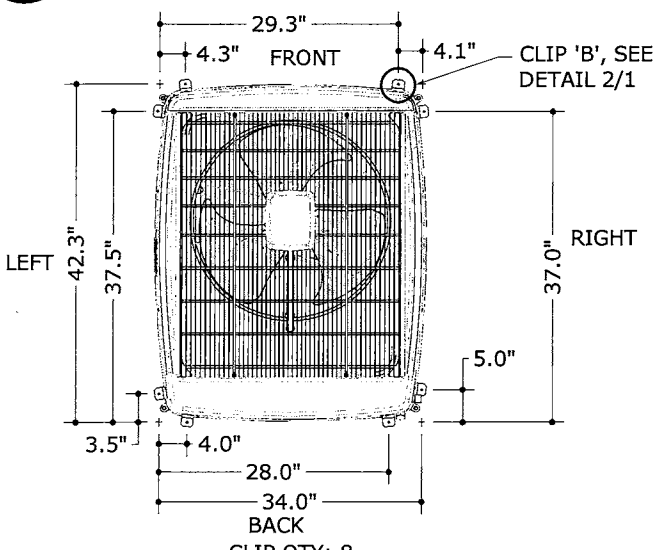
**1** Z-CHASSIS FRONT VIEW  
3 NTS ELEVATION

**2** Z-CHASSIS RIGHT VIEW  
3 NTS ELEVATION

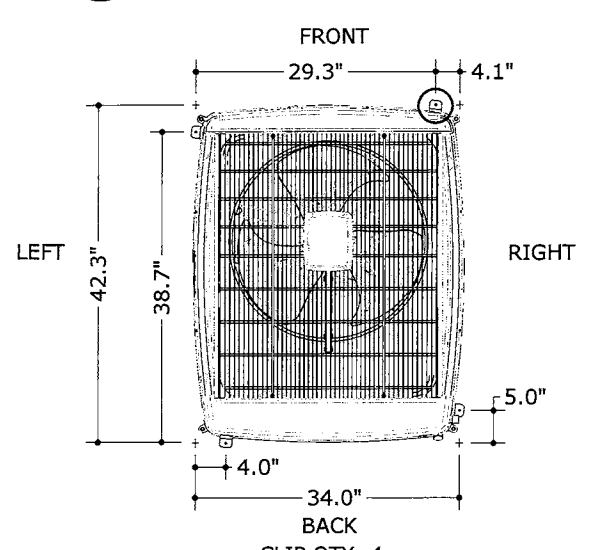


**3** Z-CHASSIS BACK VIEW  
3 NTS ELEVATION

**4** Z-CHASSIS LEFT VIEW  
3 NTS ELEVATION

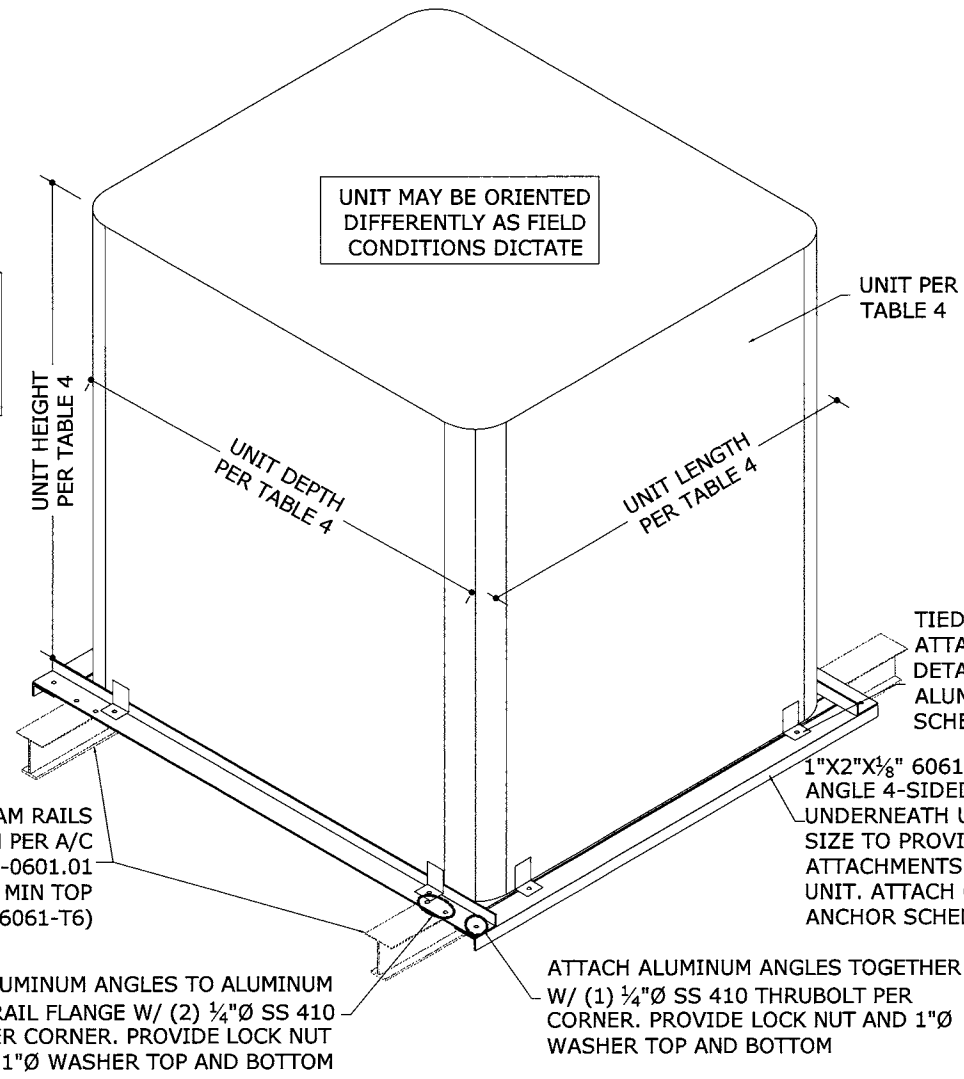


**5** Z-CHASSIS TIEDOWN (ROOF INSTALL)  
3 NTS PLAN

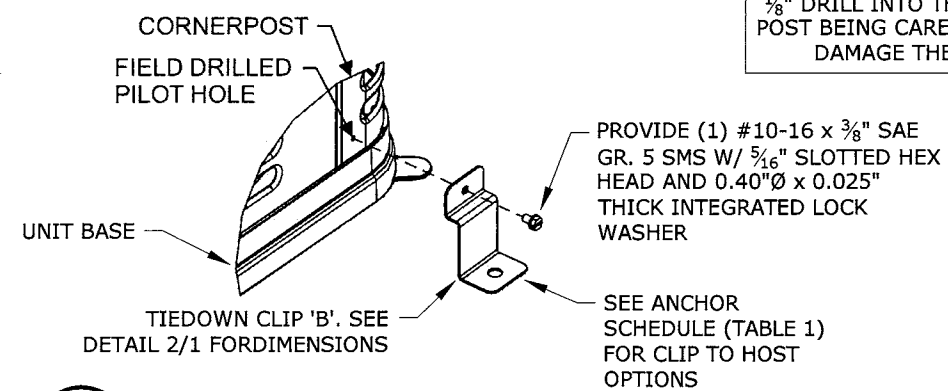


**6** Z-CHASSIS TIEDOWN (GROUND INSTALL)  
3 NTS PLAN

FIGURES 5/3 AND 6/3 NOTE: THE CLIP LOCATIONS SHOWN PERTAIN TO THE TESTED UNIT MODEL (CZF04814C). THE CLIP LOCATIONS FOR ALTERNATE MODELS (TABLE 4) MAY DIFFER SLIGHTLY BUT SHALL BE WITHIN 4.0" MAXIMUM OF THE LOCATIONS SHOWN AND SHALL HAVE AN EQUAL NUMBER OF CLIPS PER SIDE AS SHOWN (ROOF INSTALL - 2 CLIPS PER SIDE; GROUND INSTALL - 1 CLIP PER SIDE). CONCRETE PAD DESIGNS FOR GROUND INSTALLATION ARE NOT INCLUDED IN THIS CERTIFICATION



**7** UNIT BASE FRAME ATTACHMENT (ROOF INSTALL ONLY)  
3 N.T.S. ISOMETRIC



**8** E-CHASSIS TIEDOWN DIRECTIVE (CLIP B)  
3 NTS ISOMETRIC

FRANK L. BENNARDO, P.E.  
PE# 0046549  
06/13/2019  
FRANK L. BENNARDO, P.E.  
PROFESSIONAL ENGINEER  
STATE OF FLORIDA  
No PE0046549  
IF CHECKED, CERTIFYING P.E. APPEARS BELOW

**EX ENGINEERING EXPRESS**  
CORPORATE OFFICE:  
160 SW 12th AVE, SUITE 106  
DEERFIELD BEACH, FL 33442  
P: (954) 354-0660 F: (954) 354-0443  
E: HELLO@ENGINEERINGEXPRESS.COM  
ENGINEERINGEXPRESS.COM  
CERT OF AUTH #9885

**YORK INTERNATIONAL CORP.**  
3110 North Mead Street  
Wichita, KS 67219  
OD CONDENSING UNIT CABINETS  
FLORIDA BUILDING CODE  
MIAMI-DADE NOTICE OF ACCEPTANCE

REMARKS	DRWN	CHKD	DATE
INIT ISSUE	RWN	FLB	02/24/16
MD COMMENTS & 2017 FBC	RWN	FLB	03/01-18
MD COMMENTS	RWN	FLB	5/29/18

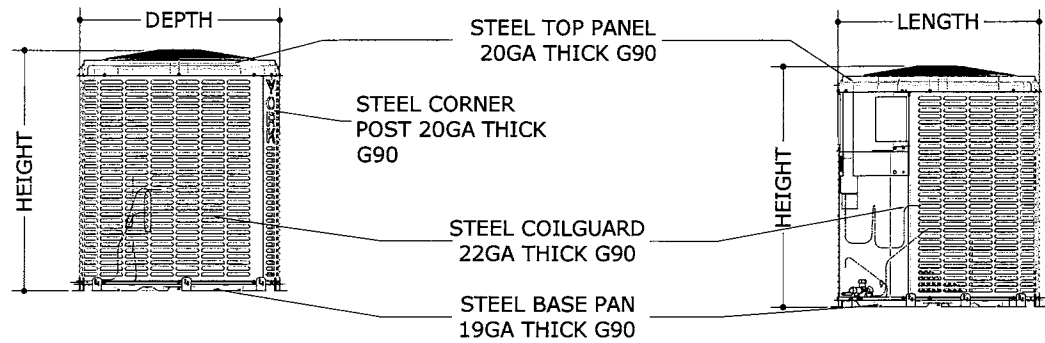
COPYRIGHT ENGINEERING EXPRESS

15-2783  
SCALE: NTS UNLESS NOTED  
3 OF 6

V:\projects\15-2783 OD Condensing Unit Test Protocol\WP\NOA Submittal\2019 NOA Revision\15-2783\_z OD Condensing Unit (NOA).dwg  
rickn  
06/13/2019 - 9:05am

# YORK INTERNATIONAL CORP.

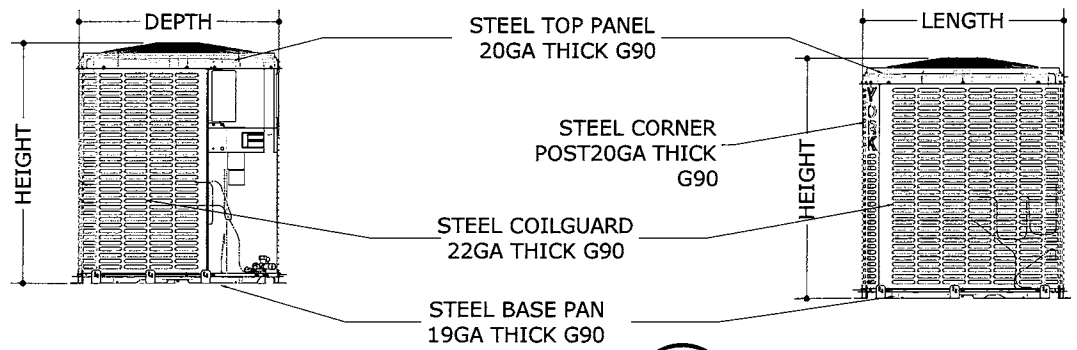
## OD CONDENSING UNITS (Y-CHASSIS)



SEE TABLE 3 ON SHEET 6 FOR ADDITIONAL APPROVED UNITS PER THE TESTED MODEL ON THIS SHEET

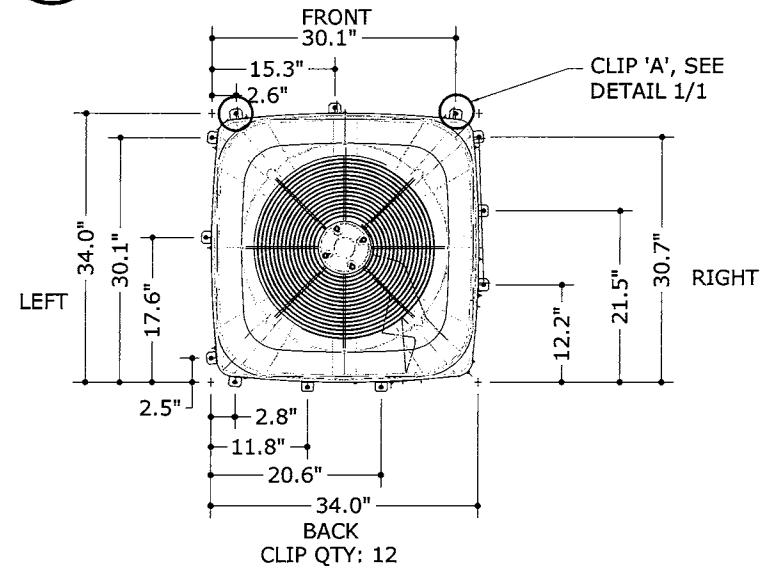
**1** Y-CHASSIS FRONT VIEW  
**4** NTS ELEVATION

**2** Y-CHASSIS RIGHT VIEW  
**4** NTS ELEVATION

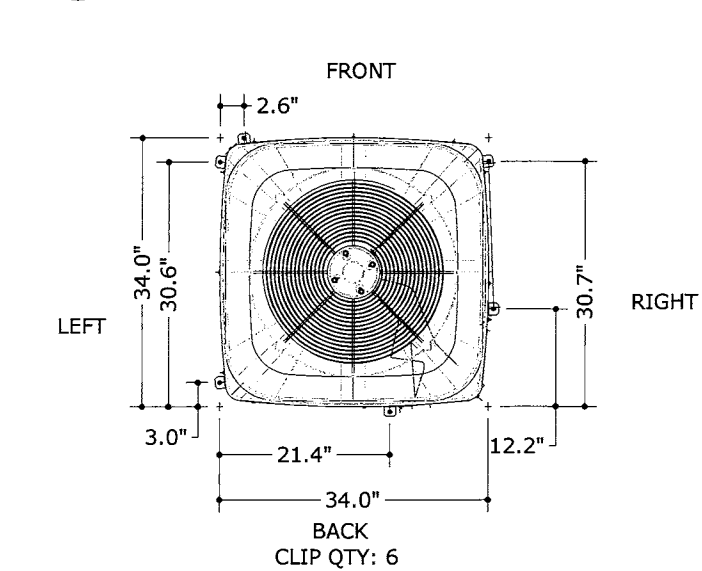


**3** Y-CHASSIS BACK VIEW  
**4** NTS ELEVATION

**4** Y-CHASSIS LEFT VIEW  
**4** NTS ELEVATION

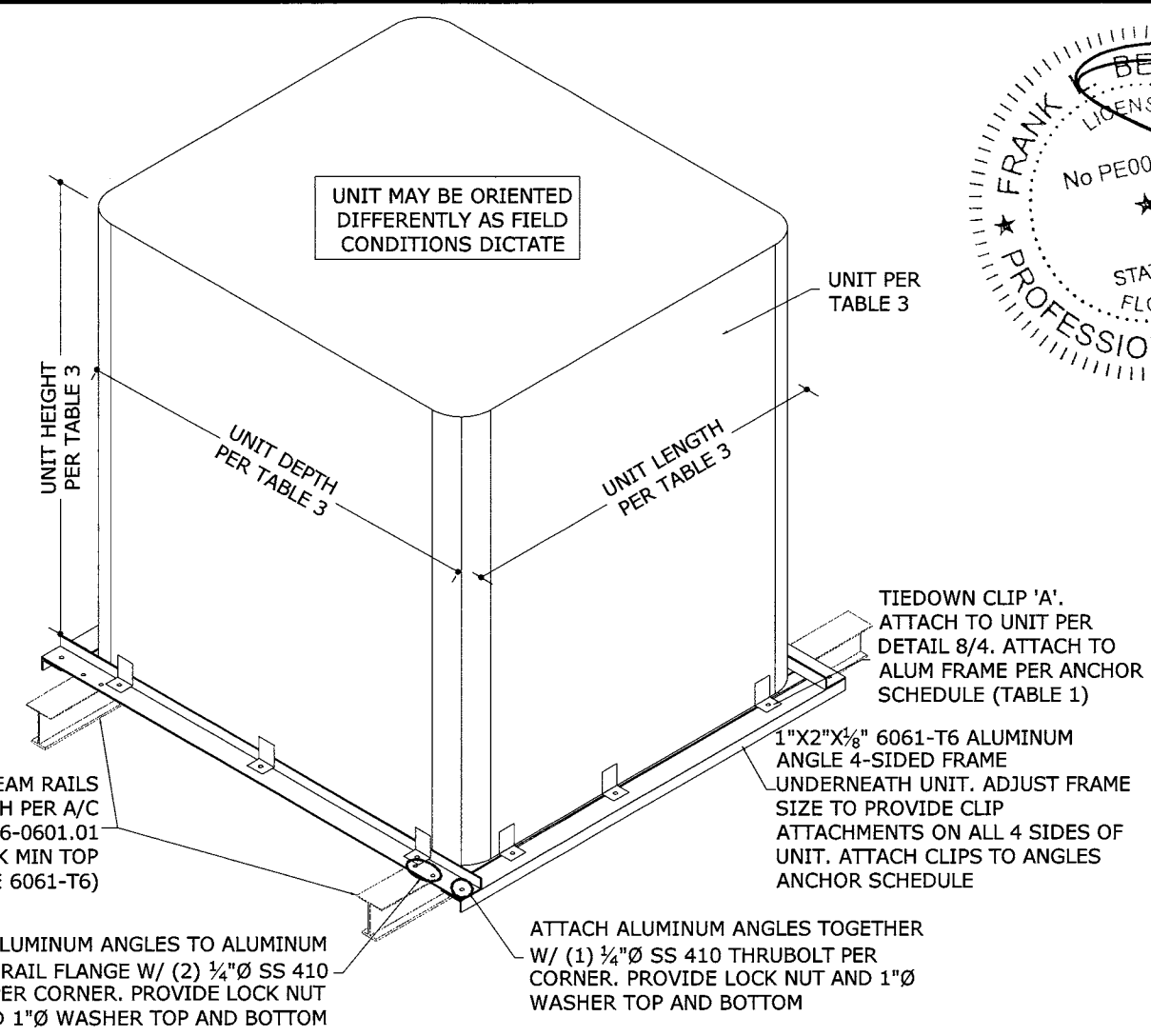


**5** Y-CHASSIS TIEDOWN (GROUND INSTALL)  
**4** NTS PLAN



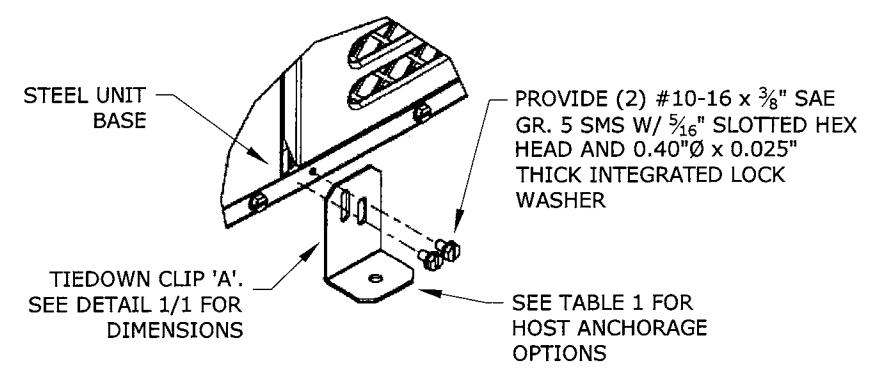
**6** Y-CHASSIS TIEDOWN (GROUND INSTALL)  
**4** NTS PLAN

FIGURES 5/4 AND 6/4 NOTE: THE CLIP LOCATIONS SHOWN PERTAIN TO THE TESTED UNIT MODELS (TCJF60S41S2, RAC14J604S21 & RAC14F604B21S). THE CLIP LOCATIONS FOR ALTERNATE MODELS (TABLE 3) MAY DIFFER SLIGHTLY BUT SHALL BE WITHIN 4.0" MAXIMUM OF THE LOCATIONS SHOWN AND SHALL HAVE AN EQUAL NUMBER OF CLIPS PER SIDE AS SHOWN (ROOF INSTALL - 3 CLIPS PER SIDE; GROUND INSTALL - 2 CLIPS PER SIDE). CONCRETE PAD DESIGNS FOR GROUND INSTALLATION ARE NOT INCLUDED IN THIS CERTIFICATION

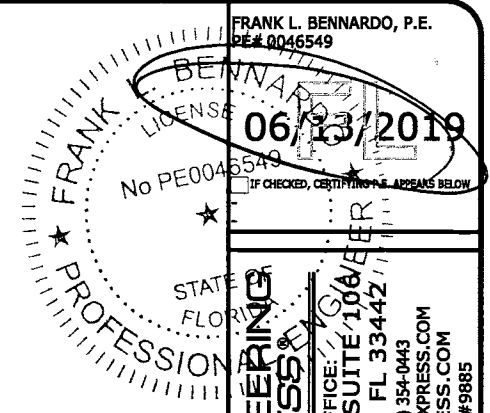


**7** UNIT BASE FRAME ATTACHMENT (ROOF INSTALL ONLY)  
**4** N.T.S. ISOMETRIC

AS NEEDED: MARK AND DRILL ADDITIONAL HOLES USING A 1/8" DRILL INTO THE BASE FLANGE BEING CAREFUL NOT TO DAMAGE THE COIL.



**8** Y-CHASSIS TIEDOWN DIRECTIVE (CLIP 'A')  
**4** NTS ISOMETRIC



**ENGINEERING EXPRESS**  
CORPORATE OFFICE:  
160 SW 12th AVE, SUITE 106  
DEERFIELD BEACH, FL 33442  
P: (954) 354-0660 F: (954) 354-0443  
E: HELLO@ENGINEERINGEXPRESS.COM  
ENGINEERINGEXPRESS.COM  
CERT OF AUTH #9885

**YORK INTERNATIONAL CORP.**  
3110 North Mead Street  
Wichita, KS 67219  
OD CONDENSING UNIT CABINETRY  
FLORIDA BUILDING CODE  
MIAMI-DADE NOTICE OF ACCEPTANCE

REMARKS	DRWN	CHKD	DATE
INIT ISSUE	RWN	FLB	02/24/16
MD COMMENTS & 2017 FBC	RWN	FLB	03/01-18
MD COMMENTS	RWN	FLB	5/28/18

COPYRIGHT ENGINEERING EXPRESS®  
**15-2783**

SCALE: NTS UNLESS NOTED  
**4**

V:\projects\15-2783 OD Condensing Unit Test Protocol\WP\NOA Submittal\2019 NOA Revision\15-2783\_z OD Condensing Unit (NOA).dwg  
rickn 06/13/2019 - 9:05am

Table 2: Tested Unit Construction E-Chassis

OD Model	Operating Dimensions w/screw heads			Tested Weight (lbs)
	Depth (in)	Length (in)	Height (in)	
YFE60B2*	34.25	38.00	39.50	256
RAC14F60B2*	34.25	38.00	39.50	266
YHE60B2*	34.25	38.00	42.75	261
RHP14L60B2*	34.25	38.00	42.75	261
YXT60B2*	34.50	38.25	46.50	253
YXV60B2*	34.50	38.25	46.50	253

The unit models listed above were tested and designed as worst case configurations. Additional unit models may be certified by the accompanying approval as long as they have identical construction and components as those listed above and are of equal or lesser size (length, width, height). Tabular Datasheet supplied with the outdoor equipment will show the unit dimensions.

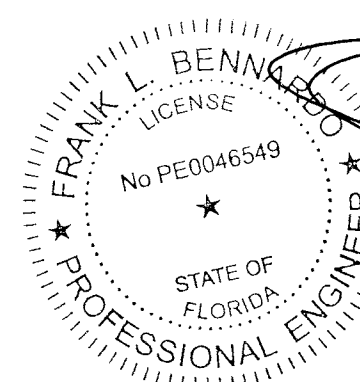
Models listed below are of same construction as the tested units listed above. "\*" in model denotes any other character or number.

OD Models				
AC19B242*	QC4B48B2*	RAW14L24B2*	TCG30B3*	YCE60B2*
AC19B362*	QC4B60B2*	RAW14L30B2*	TCG30B4*	YCG18B2*
AC19B482*	QW4B24B2*	RAW14L36B2*	TCG36B3*	YCG24B2*
AC19B602*	QW4B30B2*	RAW14L42B2*	TCG36B4*	YCG30B2*
AC21B242*	QW4B36B2*	RAW14L48B2*	TCG42B3*	YCG36B2*
AC21B362*	QW4B42B2*	RAW14L60B2*	TCG42B4*	YCG42B2*
AC21B482*	QW4B48B2*	TC17B242*	TCG48B3*	YCG48B2*
AC21B602*	QW4B60B2*	TC17B362*	TCG48B4*	YCG60B2*
AL19B242*	RAC13F18B2*	TC17B482*	TCG60B3*	YCS18B2*
AL19B362*	RAC13F24B2*	TC17B602*	TCG60B4*	YCS24B2*
AL19B482*	RAC13F30B2*	TC3B182*	TF3B182*	YCS30B2*
AL19B602*	RAC13F36B2*	TC3B242*	TF3B242*	YCS36B2*
AL21B242*	RAC13F42B2*	TC3B302*	TF3B302*	YCS42B2*
AL21B362*	RAC13F48B2*	TC3B362*	TF3B362*	YCS48B2*
AL21B482*	RAC13F60B2*	TC3B422*	TF3B422*	YCS60B2*
AL21B602*	RAC13L18B2*	TC3B482*	TF3B482*	YFD18B2*
CC17B242*	RAC13L24B2*	TC3B602*	TF3B602*	YFD24B2*
CC17B362*	RAC13L30B2*	TC4B1822*	TF4B1822*	YFD30B2*
CC17B482*	RAC13L36B2*	TC4B242*	TF4B242*	YFD36B2*
CC17B602*	RAC13L42B2*	TC4B302*	TF4B302*	YFD42B2*

TABLE 2: CONTINUED

CC7B182*	RAC13L48B2*	TC4B362*	TF4B362*	YFD48B2*
CC7B242*	RAC13L60B2*	TC4B422*	TF4B422*	YFD60B2*
CC7B302*	RAC14F18B2*	TC4B482*	TF4B482*	YFE18B2*
CC7B362*	RAC14F24B2*	TC4B602*	TF4B602*	YFE24B2*
CC7B422*	RAC14F30B2*	TC7B182*	TW4B1822*	YFE30B2*
CC7B482*	RAC14F36B2*	TC7B242*	TW4B242*	YFE36B2*
CC7B602*	RAC14F42B2*	TC7B302*	TW4B302*	YFE42B2*
GAW14L18C2*	RAC14F48B2*	TC7B362*	TW4B362*	YFE48B2*
GAW14L24C2*	RAC14F60B2*	TC7B422*	TW4B422*	YFE60B2*
GAW14L30C2*	RAC14L18B2*	TC7B482*	TW4B482*	YFK24B2*
GAW14L36C2*	RAC14L24B2*	TC7B602*	TW4B602*	YFK36B2*
GAW14L42C2*	RAC14L30B2*	TCD30B3*	YCD18B2*	YFK48B2*
GAW14L48C2*	RAC14L36B2*	TCD30B4*	YCD24B2*	YFK60B2*
GAW14L60C2*	RAC14L42B2*	TCD36B3*	YCD30B2*	YXT24B2*
QC3B24B2*	RAC14L48B2*	TCD36B4*	YCD36B2*	YXT36B2*
QC3B30B2*	RAC14L60B2*	TCD36B5*	YCD42B2*	YXT48B2*
QC3B36B2*	RAC17L18B2*	TCD42B3*	YCD48B2*	YXT60B2*
QC3B42B2*	RAC17L24B2*	TCD42B4*	YCD60B2*	YXV24B2*
QC3B48B2*	RAC17L30B2*	TCD48B3*	YCE18B2*	YXV36B2*
QC3B60B2*	RAC17L36B2*	TCD48B4*	YCE24B2*	YXV48B2*
QC4B24B2*	RAC17L42B2*	TCD48B5*	YCE30B2*	YXV60B2*
QC4B30B2*	RAC17L48B2*	TCD60B3*	YCE36B2*	
QC4B36B2*	RAC17L60B2*	TCD60B4*	YCE42B2*	
QC4B42B2*	RAW14L18B2*	TCD60B5*	YCE48B2*	
CH16B242*	HL20B482*	RHP16L42B2*	TH6B422*	YHE47B2*
CH16B362*	HL20B602*	RHP16L48B2*	TH6B482*	YHE48B2*
CH16B482*	QH4B24B2*	RHP16L60B2*	TH6B602*	YHE59B2*
CH16B602*	QH4B30B2*	TH16B242*	THE30B3*	YHE60B2*
CH6B182*	QH4B36B2*	TH16B362*	THE30B4*	YHG18B2*
CH6B242*	QH4B42B2*	TH16B482*	THE35B3*	YHG24B2*
CH6B302*	QH4B48B2*	TH16B602*	THE35B4*	YHG30B2*
CH6B362*	RHP14L17B2*	TH4B172*	THE36B3*	YHG36B2*
CH6B422*	RHP14L18B2*	TH4B182*	THE36B4*	YHG42B2*
CH6B482*	RHP14L23B2*	TH4B232*	THE42B3*	YHG48B2*
CH6B602*	RHP14L24B2*	TH4B242*	THE42B4*	YHG60B2*
HC19B242*	RHP14L29B2*	TH4B292*	THE48B3*	YHM24B2*
HC19B362*	RHP14L30B2*	TH4B302*	THE48B4*	YHM36B2*
HC19B482*	RHP14L35B2*	TH4B352*	THE60B3*	YHM48B2*
HC19B602*	RHP14L36B2*	TH4B362*	THE60B4*	YHM60B2*
HC20B242*	RHP14L41B2*	TH4B412*	YHE17B2*	YZT24B2*
HC20B362*	RHP14L42B2*	TH4B422*	YHE18B2*	YZT36B2*
HC20B482*	RHP14L47B2*	TH4B472*	YHE23B2*	YZT48B2*
HC20B602*	RHP14L48B2*	TH4B482*	YHE24B2*	YZT60B2*
HL19B242*	RHP14L59B2*	TH4B592*	YHE29B2*	YZV24B2*
HL19B362*	RHP14L60B2*	TH4B602*	YHE30B2*	YZV36B2*
HL19B482*	RHP16L18B2*	TH6B182*	YHE35B2*	YZV48B2*
HL19B602*	RHP16L24B2*	TH6B242*	YHE36B2*	YZV60B2*
HL20B242*	RHP16L30B2*	TH6B302*	YHE41B2*	
HL20B362*	RHP16L36B2*	TH6B362*	YHE42B2*	

\*May end in any character.



FRANK L. BENNARDO, P.E.  
PE# 0046549  
06/13/2019  
IF CHECKED, CERTIFYING P.E. APPEARS BELOW

**ENGINEERING EXPRESS**  
CORPORATE OFFICE:  
160 SW 12th AVE, SUITE 106  
DEERFIELD BEACH, FL 33442  
P: (954) 354-0660 F: (954) 354-0443  
E: HELLO@ENGINEERINGEXPRESS.COM  
ENGINEERINGEXPRESS.COM  
CERT OF AUTH #9885

**YORK INTERNATIONAL CORP.**  
3110 North Mead Street  
Wichita, KS 67219  
OD CONDENSING UNIT CABINETRY  
FLORIDA BUILDING CODE  
MIAMI-DADE NOTICE OF ACCEPTANCE

REMARKS	DRWN	CHKD	DATE
INIT ISSUE	RVN	FLB	02/24/16
MD COMMENTS & 2017 FBC RVN	RVN	FLB	03/01-18
MD COMMENTS	RVN	FLB	5/29/18

PRODUCT REVISED  
as complying with the Florida  
Building Code  
Acceptance No. 19-0401.05  
Expiration Date 07/12/2023  
By   
Miami Dade Product Control

15-2783  
SCALE: NTS UNLESS NOTED  
OF 6  
5

SEE SHEET 6 FOR TABLES 3 & 4



Table 3: Tested Unit Construction Y-Chassis				
OD Model	Operating Dimensions w/screw heads			Operating Weight (lbs)
	Width (in)	Length (in)	Height (in)	
YCJF60S41S2	34.00	34.00	40.25	231
RAC14J60S21	34.00	34.00	40.25	231

The unit models listed above were tested and designed as worst case configurations. Additional unit models may be certified by the accompanying approval as long as they have identical construction and components as those listed above and are of equal or lesser size (length, width, height). Tabular Datasheet supplied with the outdoor equipment will show the unit dimensions.

Models listed below are of same construction as the tested units listed above. "\*" in model denotes any other character or number.

OD Model				
GCGD18S21S2X*	RAC14J244S21*	TCJD36S43S3*	THJF24S41S3*	YCJF60S41S2*
CCGD24S41Q3*	RAC14J304S21*	TCJD36S44S3*	THJF30S41S3*	YHJD18S41S7*
CCGD30S41Q3*	RAC14J364S21*	TCJD42S41S4*	THJF36S41S4*	YHJD24S41S7*
CCGD36S41Q3*	RAC14J424S21*	TCJD42S43S4*	THJF42S41S5*	YHJD30S41S1*
CCGD42S41Q5*	RAC14J484S21*	TCJD42S44S4*	THJF48S41S5*	YHJD30S41S7*
CCGD48S41Q3*	RAC14J604S21*	TCJD48S41S3*	THJF60T41S1*	YHJD30S43S4*
CCGD60S41Q5*	RHP13J184S23*	TCJD48S43S3*	THJR18S41S3*	YHJD30S44S4*
CHJD24S41Q4*	RHP13J244S23*	TCJD48S44S3*	THJR24S41S4*	YHJD36S41S1*
CHJD30S41Q4*	RHP13J304S23*	TCJD60S41S4*	THJR30S41S4*	YHJD36S41S7*
CHJD36S41Q4*	RHP13J304S31*	TCJD60S43S4*	THJR36S41S4*	YHJD36S43S4*
CHJD42S41Q4*	RHP13J364S23*	TCJD60S44S4*	THJR42S41S4*	YHJD36S44S4*
CHJD48S41Q4*	RHP13J364S31*	TCJD76S43S3*	THJR48S41S4*	YHJD42S41S4*
GCGD24S21S2X*	RHP13J424S23*	TCJD76S44S3*	THJR60S41S6*	YHJD42S41S7*
GCGD30S21S2*	RHP13J424S31*	TCJF18S41S3*	YCJD18S41S1*	YHJD42S43S4*
GCGD36S21S2*	RHP13J484S23*	TCJF24S41S3*	YCJD24S41S1*	YHJD42S44S4*
GCGD42S21S2*	RHP13J484S31*	TCJF30S41S3*	YCJD30S41S1*	YHJD48S41S7*
GCGD48S21S2*	RHP13J604S23*	TCJF36S41S3*	YCJD30S43S3*	YHJD48S43S3*
GCGD60S21S2X*	RHP13J604S31*	TCJF42S41S3*	YCJD30S44S3*	YHJD48S44S3*
GHGD18S21S1*	RHP13R184S21*	TCJF48S41S4*	YCJD36S41S1*	YHJD60S41S7*
GHGD24S21S1*	RHP13R244S21*	TCJF60S41S4*	YCJD36S43S3*	YHJD60S43S5*
GHGD30S21S1*	RHP13R304S21*	THJD18S41S7*	YCJD36S44S3*	YHJD60S44S5*
GHGD36S21S1*	RHP13R364S21*	THJD24S41S7*	YCJD42S41S2*	YHJF18S41S1*
GHGD42S21S1*	RHP13R424S21*	THJD30S41S7*	YCJD42S43S4*	YHJF24S41S1*
GHGD48S21S1*	RHP13R484S21*	THJD30S43S4*	YCJD42S44S4*	YHJF30S41S1*
GHGD60S21S1*	RHP13R604S22*	THJD30S44S4*	YCJD48S41S1*	YHJF36S41S4*
RAC13J184S21*	RHP14J184S21*	THJD36S41S7*	YCJD48S43S3*	YHJF42S41S2*
RAC13J244S21*	RHP14J244S21*	THJD36S43S4*	YCJD48S44S3*	YHJF42S41S5*
RAC13J304S21*	RHP14J304S21*	THJD36S44S4*	YCJD60S41S2*	YHJF48S41S1*
RAC13J304S31*	RHP14J364S21*	THJD42S41S7*	YCJD60S43S4*	YHJF48S41S5*
RAC13J364S21*	RHP14J424S21*	THJD42S43S4*	YCJD60S44S4*	YHJF60T41S1*
RAC13J364S31*	RHP14J484S21*	THJD42S44S4*	YCJD76S43S3*	YHJR18S41S3*
RAC13J424S21*	RHP14J604S22*	THJD48S41S7*	YCJD76S44S3*	YHJR24S41S4*
RAC13J424S31*	TCJD18S41S3*	THJD48S43S3*	YCJF18S41S1*	YHJR30S41S4*
RAC13J484S21*	TCJD24S41S3*	THJD48S44S3*	YCJF24S41S1*	YHJR36S41S4*
RAC13J484S31*	TCJD30S41S3*	THJD60S41S7*	YCJF30S41S1*	YHJR42S41S4*
RAC13J604S21*	TCJD30S43S3*	THJD60S43S5*	YCJF36S41S1*	YHJR48S41S4*
RAC13J604S31*	TCJD30S44S3*	THJD60S44S5*	YCJF42S41S1*	YHJR60S41S6*
RAC14J184S21*	TCJD36S41S3*	THJF18S41S3*	YCJF48S41S2*	

\*May end in any character.

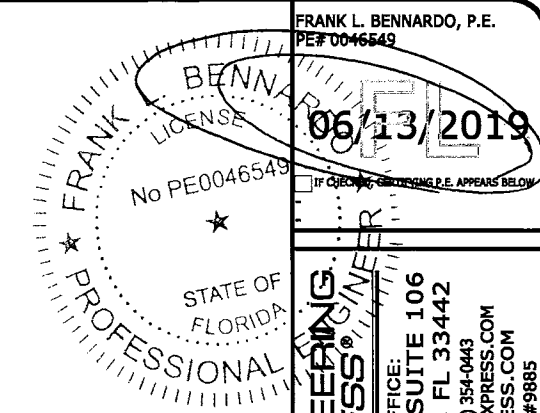
Table 4: Tested Unit Construction Z-Chassis				
OD Model	Operating Dimensions w/screw heads			Operating Weight (lbs)
	Width (in)	Length (in)	Height (in)	
CZF04814C	34.00	42.25	40.00	250

The unit models listed above were tested and designed as worst case configurations. Additional unit models may be certified by the accompanying approval as long as they have identical construction and components as those listed above and are of equal or lesser size (length, width, height). Tabular Datasheet supplied with the outdoor equipment will show the unit dimensions.

Models listed below are of same construction as the tested units listed above. "\*" in model denotes any other character or number.

OD Model				
AC6B024F3C*	AL6B036F4C*	CZF04814C*	HC6B042F4C*	HL6B060F4C*
AC6B030F3C*	AL6B042F3C*	CZF06013C*	HC6B048F4C*	HL8048F4C*
AC6B036F4C*	AL6B048F4C*	CZH02412C*	HC6B060F4C*	HL8060F4C*
AC6B042F3C*	AL6B060F3C*	CZH03612C*	HC8060F4C*	HL8B024F4C*
AC6B048F4C*	AL8048F4C*	CZH03612C*	HC8B024F4C*	HL8B036F4C*
AC6B060F3C*	AL8060F4C*	CZH04812C*	HC8B036F4C*	YZF02413C*
AC8060F4C*	AL8B024F4C*	CZH04812C*	HC8B048F4C*	YZF03013C*
AC8B024F4C*	AL8B036F4C*	CZH06012C*	HL6B024F3C*	YZF03614C*
AC8B036F4C*	CZF02413C*	CZH06012C*	HL6B030F3C*	YZF04214C*
AC8B048F4C*	CZF03013C*	HC6B024F3C*	HL6B036F4C*	YZF04814C*
AL6B024F3C*	CZF03614C*	HC6B030F3C*	HL6B042F4C*	YZF06014C*
AL6B030F3C*	CZF04213C*	HC6B036F4C*	HL6B048F4C*	YZH02412C*

\*May end in any character.



**ENGINEERING EXPRESS**  
 CORPORATE OFFICE:  
 160 SW 12th AVE, SUITE 106  
 DEERFIELD BEACH, FL 33442  
 P: (954) 354-0660 F: (954) 354-0443  
 E: HELLO@ENGINEERINGEXPRESS.COM  
 ENGINEERINGEXPRESS.COM  
 CERT OF AUTH #9885

**YORK INTERNATIONAL CORP.**  
 31.10 North Mead Street  
 Wichita, KS 67219

OD CONDENSING UNIT CABINETRY  
 FLORIDA BUILDING CODE  
 MIAMI-DADE NOTICE OF ACCEPTANCE

REMARKS	DRWN	CHKD	DATE
INIT ISSUE	RVN	FLB	02/24/16
MD COMMENTS & 2017 FBC	RVN	FLB	03/01-18
MD COMMENTS	RVN	FLB	5/29/18

PRODUCT REVISED  
 as complying with the Florida  
 Building Code  
 Acceptance No. 19-090605  
 Expiration Date 07/12/2023

By [Signature]  
 Miami Dade Product Control

15-2783

SCALE: NTS UNLESS NOTED

6