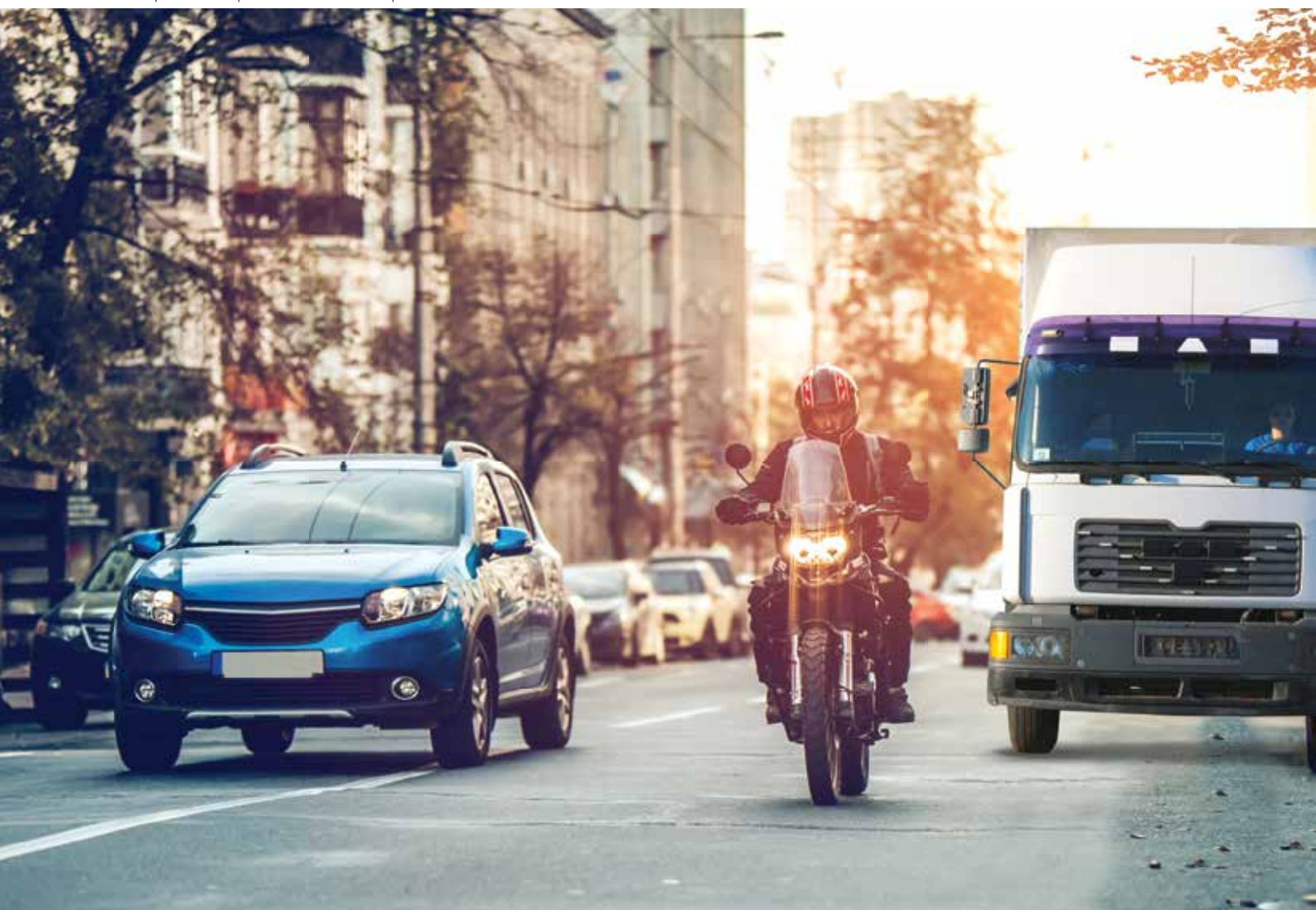


Maximum retail pricelist for bearings

Effective from January 2022

*This pricelist supercedes all earlier pricelists



Install confidence,
install SKF!

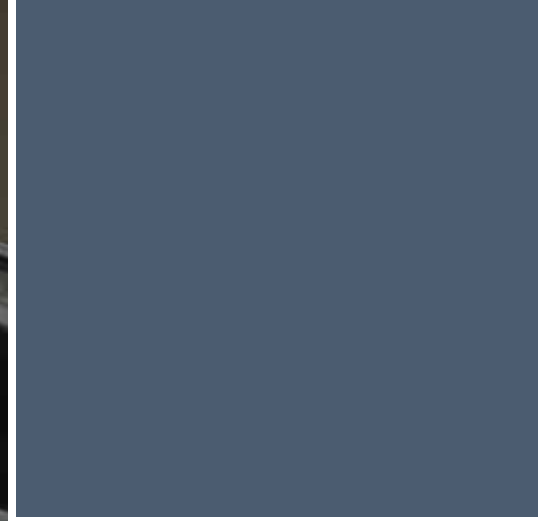




About SKF

The SKF Group has over 100 manufacturing sites worldwide, sales companies in 70 countries, representation in 130 countries, making it a truly global company. In addition, our global distribution system with distributors and dealers in over 15,000 locations around the world and an e-business marketplace puts SKF close to customers for the supply of both products and services. In essence, SKF solutions are available wherever and whenever customers need them. SKF in India has a pan India footprint comprising of six manufacturing facilities,

six offices, over 300 distributors and an employee base of over 3,300 dedicated professionals. SKF Vehicle Service Market deals with the aftermarket for cars, two wheelers, three wheelers, tractors and commercial vehicles across India. As a knowledge engineering company, SKF is much more than a components supplier — our engineers fall back on a century of SKF expertise to improve overall system reliability, safety and efficiency.



What do today's customers want?

Higher fuel efficiency. A quiet , comfortable ride. No downtime. Less maintenance. And an array of active and passive safety features.

SKF products are designed to meet such customer requirements and offers a wide range of bearings that are the best performance fit for your application. With more than 100 years of experience , SKF not only provides components but a complete support to our customers by helping them address their critical issues - reliability , efficiency and safety.

Supplementary designations

N	Snap ring groove in outside cylindrical surface of the outer ring.
NR	As N , but with snap ring.
RS1	Contact type rubber seal with sheet steel reinforcement , at one side of the bearing.
2RS1	RS1 seals at both sides of the bearing.
RZ	Low friction seal of synthetic rubber with sheet steel reinforcement at on side of the bearing.
2RZ	RZ seals at both sides of the bearing.
Z	Shield (non-contact type) at one side of the bearing.
2Z	Z shields at both sides of the bearing.
ZN	Z shield at one side of the bearing and snap ring groove in outer ring.
ZNR	As ZN , but with snap ring.
2ZNR	As 2ZN , but with snap ring.
TN9	Glass fibre reinforced polyamide 6 , 6 window-type cage.
HN3	Stands for carbonitrided bearing. Performance of standard through hardened bearings can be drastically improved by the use of a surface heat treatment called carbonitriding. Carbonitriding is a high temperature heat treatment , which involves the diffusion of carbon and nitrogen into the surface of the steel. Deep Groove Ball Bearings (DGBB) with carbonitrided inner rings have been found to be twice as resistant compared to regular hardened DGBBs.
H	Stands for radial clearance in the upper half of the same clearance bracket e.g. 6002/C3H , here clearance for C3 is between 8 to 23 micron but for C3H clearance is between 15 to 23 micron. CNL Stands for radial clearance in the lower half of the same clearance bracket e.g. 6304/CNL , here clearance for normal bearing is between 5 to 20 micron but for CNL clearance is between 5 to 14 micron.
CNP	Stands for radial clearance which is a combination of the upper half of normal (CN) and the lower half of C3 range e.g. 6305/CNP , here the clearance for normal bearing is between 5 to 20 micron and 13 to 28 micron for C3. Hence , CNP clearance will be 13 to 21 micron.
VB133	Chamfer in bore deviating from basic bearing.
VQ091	Close bore diameter tolerance.
VB524	Chamfer in bore and outer diameter deviating from basic bearing.
VQ213	Special tolerance for bearing vibration & peaks.
MTF7&9	Here MT stands for medium temperature grease and F7 & F9 gives the quantities of grease.
GJN7	Here GJN stands for high temperature grease and 7 for grease quantity.
J	Pressed steel cage.
Q	SKF TQ Line bearings come with a logarithmic contact profile that provides for optimum stress distribution over roller/raceway contacts. Special design of sliding surfaces of guide flange and large roller ends considerably promotes lubricant film formation at roller end/flange contacts. Resulting benefits include increased operational reliability and reduced sensitivity to misalignment.

Internal clearance

The bearing internal clearance is defined as the total distance through which one bearing ring can be moved relative to the other under zero measuring load. Movement in the radial direction is called radial internal clearance; axial movement , axial internal clearance. The internal clearance is standardized.

Rolling bearings are delivered with different internal clearance. The internal clearance will vary from bearing type to bearing type. The most common clearance is NORMAL (with no suffix).

- C1 = Bearing internal clearance smaller than C2
- C2 = Bearing internal clearance smaller than normal
- C3 = Bearing internal clearance greater than normal
- C4 = Bearing internal clearance greater than C3
- C5 = Bearing internal clearance greater than C4

Why internal clearance?

1. In order to fit a bearing tightly on shaft it is necessary that the shaft is slightly larger than the bore of the inner ring. When the bearing is mounted , the inner ring will be expanded and consequently the space available for the rolling elements will be reduced. The reduction in space available for rolling elements when the bearing is mounted is accommodated by internal clearance
2. Steel will expand with increased temperature. In operation the temperature of the various parts of a bearing will not remain uniform and resulting in varying degrees of expansion , which is compensated by the internal clearance. The internal clearance required is dependent upon the mounting fit and the operating conditions. In case of doubt a bearing with greater clearance shall always be selected.

For more details/information , write to:

Marketing Department ,
Vehicle Service Market ,
SKF India Limited ,
Chinchwad Pune 411 033
Phone: +91-20-6611 2500
Fax: +91-20-6611 2440
Helpline: 1800 222 007 (Toll Free from MTNL/BSNL landlines)
or +91-20-6633 7777 (normal STD charges apply)
Website: www.skfindia.com

This edition of Maximum Retail price of SKF products are as on 1st April 2018. For latest information please contact your nearest Automotive Distributor. (Please visit our website to locate a Distributor near you.) M.R.P. given in this list are recommended prices , retailers/Distributors are free to sell below the M.R.P.

The contents of this publication are the copyright of the publisher and must not be reproduced (even extracts) unless permission is granted. Every care has been taken to ensure the accuracy of the information contained in this publication but no liability for any loss or damage whether direct , indirect or consequential arising out of the use of the information contained herein.



Sr.No	Designation	MRP (Rs.)
	Deep Groove Ball Bearings	
1	16008	478
2	1838001/C3	324
3	1838001/C4	324
4	1888180	1391
5	1888451	1334
6	306445 C	1044
7	6000	158
8	6000/C3	158
9	6000/C3D8VG043	158
10	6000-2RS1	215
11	6000-2RS1/C3	215
12	6000-2RS1/C4HTF7	215
13	6000-Z	173
14	6000-Z/C3	173
15	6000-2Z	180
16	6000-2Z/C3	180
17	6001	154
18	6001/C3	154
19	6001-RS1/C3	194
20	6001-2RS1	225
21	6001-2RS1/C3	225
22	6001-2RSH	225
23	6001-Z	175
24	6001-Z/C3	175
25	6001-2Z	179
26	6001-2Z/C3	179
27	6001-2Z/GJN	179
28	6001/HN3C3VG043	154
29	6002	176
30	6002/C3	176
31	6002/C3H	176
32	6002/D8VG043	83
33	6002-RS1	221
34	6002-2RS1	240
35	6002-RSH3/S00VG043	112
36	6002-Z	193
37	6002-Z/C3	193
38	6002-2Z	215
39	6002-2Z/C3	215
40	6003	208
41	6003/C3	208
42	6003/C3HD8	208

43	6003/C3L	208
44	6003-RS1	216
45	6003-RS1/C3	216
46	6003-2RS1	271
47	6003-Z	226
48	6003-Z/C3	226
49	6003-2Z	241
50	6003-2Z/C3	241
51	6004	226
52	6004/C3	226
53	6004/HN3	262
54	6004-RS1	264
55	6004-RS1/C3	264
56	6004-2RS1	294
57	6004-2RS1/C3	294
58	6004-Z	248
59	6004-Z/C3	248
60	6004-2Z	267
61	6004-2Z/C3	267
62	6004/CNHD8S0VG043	226
63	6005	255
64	6005/C3	255
65	6005-RS1	284
66	6005-RS1/C3	284
67	6005-2RS1	324
68	6005-2RS1/C3	324
69	6005-2RS1/C3GJN	312
70	6005-Z	280
71	6005-Z/C3	280
72	6005-2Z	296
73	6005-2Z/C3	296
74	6006	329
75	6006/C3	329
76	6006-RS1/C3	351
77	6006-2RS1	395
78	6006-2RS1/C3	395
79	6006-Z	358
80	6006-2Z	384
81	6006-2Z/C3	384
82	6007	350
83	6007/C3	350
84	6007-RS1	399
85	6007-RS1/C3	399
86	6007-2RS1	444
87	6007-2RS1/C3	444
88	6007-2Z	445
89	6010	771

90	6010/C3	771
91	6010-2RS1	863
92	6010-2Z	858
93	61804/C2LHT23	378
94	61804/C3	378
95	61805	254
96	61902/C3	270
97	61902-Z/C3	275
98	61902-2Z	273
99	61905/C3	291
100	61906/D8S0VB578	341
101	6200	146
102	6200/C3	146
103	6200-RS1	187
104	6200-2RS1	209
105	6200-2RS1/C3	209
106	6200-Z	165
107	6200-Z/C3	165
108	6200-2Z	183
109	6200-2Z/C3	183
110	6201	121
111	6201/C3	121
112	6201/VC4862	106
113	6201-RS1	147
114	6201-RS1/C3	147
115	6201-2RS1	175
116	6201-2RS1/C3	175
117	6201-2RS1/C3LLHT23	175
118	6201-Z	140
119	6201-Z/C3	140
120	6201-2Z	152
121	6201-2Z/C3	152
122	6202	134
123	6202/C3	134
124	6202/C3L	118
125	6202/HN3C3	135
126	6202/HN3VG043	106
127	6202-RS1	167
128	6202-RS1/C3	167
129	6202-RS1/MT33F9VG043	167
130	6202-2RS1	187
131	6202-2RS1/C2LHT23	187
132	6202-2RS1/C3	187
133	6202-2RS1/C3MTF7VG043	187
134	6202-2RSH/C3	187
135	6202-Z	154
136	6202-Z/C3	154

137	6202-Z/C3MTF7VG043	112
138	6202-2Z	167
139	6202-2Z/C3	167
140	6202-2Z/MT33F9	167
141	6202/VG043	160
142	6202/S00VG043	134
143	6203	171
144	6203/C3	171
145	6203/HN3C3	118
146	6203/HN3C3VC4862	135
147	6203-RS1	194
148	6203-RS1/C3	194
149	6203-RS1/C3VG043	142
150	6203-2RS1	222
151	6203-2RS1/C3	222
152	6203-2RS1/C3GJNVP101	222
153	6203-2RS1/C3MTF7	222
154	6203-2RS1/C3HTF7	222
155	6203-Z	190
156	6203-Z/C3	190
157	6203-2Z	208
158	6203-2Z/C3	208
159	6204	246
160	6204 N	246
161	6204/C3	246
162	6204/HN3C3L	254
163	6204-RS1	283
164	6204-RS1/C3	283
165	6204-2RS1	319
166	6204-2RS1/C3	319
167	6204-2RS1N	320
168	6204-Z	273
169	6204-Z/C3	273
170	6204-Z/HN3	273
171	6204-Z/HN3C3	273
172	6204-2RZ	325
173	6204-2RZ/C3	325
174	6204-2RZN/C3	325
175	6204-2Z	292
176	6204-2Z/C3	292
177	6204/D8	246
178	6205	329
179	6205 NR/C3	335
180	6205/C3	329
181	6205 E/HN3VK374	335
182	6205/HN3	335
183	6205-RS1	373

184	6205-RS1/C3	373
185	6205-2RS1	412
186	6205-2RS1/C3	412
187	6205-Z	361
188	6205-Z/C3	361
189	6205-Z/HN3C3H	361
190	6205-2RZ	400
191	6205-2RZ/C3	400
192	6205-2Z	386
193	6205-2Z/C3	386
194	6206	497
195	6206 N	497
196	6206 N/C3	497
197	6206 NR/C3	497
198	6206 TN9/C3VQ488	504
199	6206/C3	497
200	6206/HN3C3H	497
201	6206-RS1	538
202	6206-RS1/C3	538
203	6206-2RS1	571
204	6206-2RS1/C3	571
205	6206-2RS1/C3MT33	572
206	6206-Z	534
207	6206-Z/C3	534
208	6206-2Z	573
209	6206-2Z/C3	573
210	6207	489
211	6207/D8	489
212	6207/C3	489
213	6207/C3D8	489
214	6207 N	477
215	6207 NR	489
216	6207 NR/C3	489
217	6207-RS1	525
218	6207-RS1/MT	546
219	6207-2RS1	580
220	6207-2RS1/C3	580
221	6207-Z	532
222	6207-Z/C3	532
223	6207-2Z	562
224	6207-2Z/C3	562
225	6208	590
226	6208/C3	590
227	6208 N	601
228	6208 N/C3	601
229	6208 NR	621
230	6208 NR/C3	621

231	6208-RS1	647
232	6208-2RS1	690
233	6208-2RS1/C3	690
234	6208-Z	640
235	6208-Z/C3	640
236	6208-2Z	673
237	6208-2Z/C3	673
238	6209	712
239	6209/C3	712
240	6209-2RS1	809
241	6209-2RS1/C3	809
242	6209-Z	762
243	6209-Z/C3	762
244	6209-2Z	807
245	6209-2Z/C3	807
246	6210	748
247	6210/C3	748
248	6210 N	753
249	6210 N/C3	753
250	6210 NR	786
251	6210-2RS1	996
252	6210-2RS1/C3	996
253	6210-2RS1/C3GJN	996
254	6210-Z	810
255	6210-ZNBR	1195
256	6210-Z/C3	810
257	6210-2Z	853
258	6210-2Z/C3	853
259	6211	981
260	6211/C3	981
261	6211-RS1	1044
262	6211-2RS1	1066
263	6211-2RS1/HTF7	1066
264	6211-Z	1047
265	6211-2Z	1087
266	6211-2Z/C3	1087
267	6212	1116
268	6212/C3	1116
269	6212-2RS1	1288
270	6212-2RS1/C3	1288
271	6212-Z/C3	1272
272	6212-2Z	1286
273	6212-2Z/C3	1286
274	6213	1222
275	6213-2RS1/C3	1287
276	6213/C3	1222
277	6213-2Z	1308

278	6213-2Z/C3	1308
279	628/D8	154
280	628-2Z	163
281	629-2RS1	156
282	629-2Z	142
283	629-2Z/C3	135
284	63/28/C3HN3	677
285	63006-2RS1/C4SOOHT	561
286	6301	124
287	6301/C3	124
288	6301-RS1	150
289	6301-RS1/C3	150
290	6301-RS1/VC5131F9	150
291	6301-RS1/MTF7	150
292	6301-RS1/MT33F9	150
293	6301-RS1/C3MTF9	150
294	6301-RS1/C3VC513F9	150
295	6301-2RS1	162
296	6301-2RS1/C3	162
297	6301-2RS1/C3VC5131	162
298	6301-2RS1/C3LGWF	177
299	6301-2RS1/VC5131F7	162
300	6301-Z	145
301	6301-Z/MT33F9	145
302	6301-Z/C3	145
303	6301-2Z	153
304	6301-2Z/C3	153
305	6302	252
306	6302/C3	252
307	6302-RS1	280
308	6302-RS1/C3	280
309	6302-RS1/C3H	153
310	6302-RS1/C3HVG043	142
311	6302-2RS1	313
312	6302-2RS1/C3	313
313	6302-Z	271
314	6302-Z/C3	271
315	6302-2Z	280
316	6302-2Z/C3	280
317	6303	289
318	6303/C3	289
319	6303-RS1	326
320	6303-RS1/C3	326
321	6303-2RS1	359
322	6303-2RS1/C3	359
323	6303-2RS1/C3HTF7	359
324	6303-Z	316

325	6303-Z/C3	316
326	6303-2Z	333
327	6303-2Z/C3	333
328	6304	248
329	6304/C3	248
330	6304 N	263
331	6304 N/C3	263
332	6304/HN3C3LVB133	206
333	6304-RS1	289
334	6304-RS1/C3	289
335	6304-2RS1	316
336	6304-2RS1/C2LHT23	316
337	6304-2RS1/MTF7	316
338	6304-2RS1/C3	316
339	6304-Z	279
340	6304-Z/C3	279
341	6304-2Z	293
342	6304-2Z/C3	293
343	6305	372
344	6305/C3	372
345	6305/C3H	378
346	6305 N	374
347	6305 N/C3	374
348	6305-RS1	410
349	6305-RS1/NBRC3	410
350	6305-2RS1	441
351	6305-2RS1/C3	441
352	6305-Z	399
353	6305-Z/C3	399
354	6305-2Z	423
355	6305-2Z/C3	423
356	6306	520
357	6306/C3	520
358	6306 N	521
359	6306 N/C3	521
360	6306 NR	537
361	6306-RS1/MT	562
362	6306-2RS1	595
363	6306-2RS1/C3	595
364	6306-Z	552
365	6306-Z/C3	552
366	6306-2Z	573
367	6306-2Z/C3	573
368	6306/HN3CNP	514
369	6307	604
370	6307/C3	604
371	6307 N	606

372	6307 N/C3	606
373	6307 NR	629
374	6307 NR/C3	629
375	6307-RS1/MT	855
376	6307-2RS1	855
377	6307-2RS1/C3	855
378	6307-2RS1NR/C3	871
379	6307-Z	637
380	6307-Z/C3	637
381	6307-2Z	662
382	6307-2Z/C3	662
383	6307/D8	595
384	6308	885
385	6308/C3	885
386	6308 N	891
387	6308 N/C3	891
388	6308 NR	919
389	6308 NR/C3	919
390	6308-Z	942
391	6308-Z/C3	942
392	6308-ZN	947
393	6308-ZN/C3	947
394	6308-ZNR	978
395	6308-2Z	985
396	6308-2Z/C3	985
397	6308-2RZNR/C3	1008
398	6309	1448
399	6309/C3	1448
400	6309 N	1458
401	6309 N/C3	1458
402	6309 NR	1503
403	6309 NR/C3	1503
404	6309-RS1	1513
405	6309-RS1/C3	1513
406	6309-2RS1	1575
407	6309-2RS1/C3	1575
408	6309-Z	1530
409	6309-Z/C3	1530
410	6309-2Z	1575
411	6309-2Z/C3	1575
412	6310	1460
413	6310/C3	1460
414	6310 N	1467
415	6310 N/C3	1467
416	6310 NR	1513
417	6310 NR/C3	1513
418	6310-2RS1	1609

419	6310-2RS1/C3	1609
420	6310-Z	1570
421	6310-Z/C3	1570
422	6310-2Z	1594
423	6310-2Z/C3	1594
424	6311	2141
425	6311/C3	2141
426	6311-2RS1	2181
427	6311-2RS1/C3	2181
428	6311-2RS1/HTF7	2286
429	6311-Z	2249
430	6311-Z/C3	2249
431	6311-2Z	2310
432	6311-2Z/C3	2310
433	6312	2530
434	6312/C3	2530
435	6312-2RS1	2691
436	6312-2RS1/C3	2691
437	6312-Z	2647
438	6312-Z/C3	2647
439	6312-2Z	2704
440	6312-2Z/C3	2704
441	6313	2899
442	6313/C2	2899
443	6313/C3	2899
444	6313-2RS1	3062
445	6313-2RS1/C3	3062
446	6313-Z	3018
447	6313-Z/C3	3018
448	6313-2Z	3081
449	6313-2Z/C3	3081
450	6313-2ZNR	3147
451	6313-RS1/C3HTVT193	2918
452	613963/C3	221
453	QJ 209 MA/C2	1536
454	QJ 309/C2	1571
455	RLS 7 (62/22 Type)	1566
456	VKWM 1944 (BB1- 3902)	346
457	VKWM 1945 (BB1- 4764 B)	295
458	VKWM 1946 (BB1-4788)	283
459	VKP 63031 (LS 8)	302
460	VKBC 1006 (MS12)	692
461	VKT 8023 (62/28)	568
462	VKT 8065 (6308/C3 RO)	663
463	VKT 8067 (6211/C3 RO)	709
464	Imported Deep Groove Ball Bearing	
465	VKEB 61033 (608 2Z)	143

466	VKT 8016 (6308-2RS1/C3)	1064
467	VKT 8017 (6009-2RS1)	1123
468	VKT 8013 (6011-2Z)	1436
469	VKT 8025 (6015)	2128
470	VKT 8014 (6214)	2617
471	VKT 8015 (6314)	4307
472	VKT 8018 (6011-2RS1)	1665
473	VKT 8019 (6011)	1232
474	VKT 8020 (6012)	1333
475	VKT 8021 (6013)	1869
476	VKWB 1782 (61903-2RS1)	519
477	VKT 8022 (6014)	1974
478	VKT 8064	981
479	Tapered Roller Bearing	
480	02872/2/02820/2/Q	837
481	09067/09195/Q	580
482	15123/15245/Q	573
483	11590/11520	499
484	1888400/Q	1966
485	1988/1922/Q	529
486	24780/24720/Q	735
487	25572/25520/Q	937
488	25577/2/25523/2/Q	952
489	25580/25522/Q	909
490	25590/2/25520/2/Q	1034
491	25590/2/25523/2/Q	1034
492	25877/2/25821/2/Q	791
493	2789/2729/Q	857
494	28580/2/28521/2/Q	1024
495	30203 J2/Q	361
496	30204 J2/Q	397
497	30205 J2/Q	422
498	30206 J2/Q	559
499	30207 J2/Q	609
500	30208 J2/Q	949
501	30209 J2/Q	700
502	30211 J2/Q	1289
503	30214 J2/Q	1703
504	30215 J2/QCLN	1812
505	30302 J2/Q	406
506	30305 C	601
507	30306 J2/QCLN	705
508	30308 J2/Q	997
509	30309 J2/Q	1396
510	30312 J2/Q	2563
511	31309 J2/QCLN	1473
512	31594/2/31520/2	1067

513	320/32 X/Q	482
514	32004 X/Q	498
515	32006 X/Q	494
516	32007 X/Q	621
517	32008 X/Q	692
518	32010 X/Q	843
519	32012 X/QVB531	1263
520	32013 X/QVB533	1342
521	32014 X/Q	1569
522	32020 X/Q	2638
523	32205 J2/Q	499
524	32207 J2/Q	810
525	32210 J2/Q	1061
526	32211 J2/Q	954
527	32212 J2/Q	1477
528	32213 J2/Q	2092
529	32214 J2/Q	1730
530	32216 J2/Q	2649
531	32217 J2/Q	3159
532	32218 J2/Q	5262
533	32305 J2/Q	721
534	32307 J2/Q	1171
535	32308 J2/Q	1093
536	32309 J2/Q	1451
537	32911/Q	1264
538	33005/Q	543
539	33010/Q	976
540	33019/Q	2825
541	330201/Q	1690
542	330356 B/Q (32213)	2062
543	330632 C/Q (31312)	2791
544	33108/U4Q	792
545	33111/QVB500	1372
546	33112/Q	1688
547	33215/Q	2774
548	344/332/Q	900
549	3585/3525/Q	1393
550	3780/3720/Q	1552
551	3782/3720/Q	1585
552	387/382 A/Q	1211
553	395/394 A/Q	1455
554	395 A/394 A/Q	1425
555	395 S/394 A/Q	1425
556	39580/W/2/39520/2/Q	2227
557	39581/39520/Q	2227
558	3982/3920/2/Q	1831
559	3984/2/3920/2/Q	1684

560	39585/39520/Q	1466
561	399 A/394 A/QVB079	1387
562	418/414/Q	1019
563	42687/42620	1818
564	42690/42620/Q	2170
565	462/453 X/VB535	1469
566	47487/47420 X	1768
567	482/472/Q	1673
568	497/492 A/Q	3171
569	535/532 A	1517
570	539/532 X	1359
571	566/563/Q	1570
572	567/563	1765
573	575/572/Q	2208
574	580/572/Q	1640
575	55200 C/55437/QVE807	2465
576	6379/K-6320/Q	3098
577	683/672/Q	3002
578	687/672/Q	3182
579	72212/2/72487/2/Q	1733
580	BT1-0017 A/Q (442562 Type)	441
581	BT1-0230/Q (330633 C/QCL7A Type)	3064
582	BT1-0381/Q (639194/CL7A Type)	1268
583	BT1-0500/Q (T7FC 070 Type)	3210
584	BT1-0501/Q (65390/65320/QCL7C Type)	2481
585	BT1-0702/Q (3780/3720/Q Type)	1552
586	BT1-1066/Q (639259 Type)	1466
587	BT1B 329013 A/Q (L 45449/410 Type)	557
588	BT1-0589(30311)	1945
589	BT1-0677(30315)	3547
590	BT1-0643(31308)	1259
591	HM 212049/011	2273
592	HM 903249/2/210/2/Q	1618
593	JM 511946/910/Q	1367
594	JM 716649/610/Q	3187
595	JLM 710949/910/Q	1318
596	LM 11949/910/Q	523
597	LM 29749 F/711/Q	584
598	LM 29749/710/QCL7CVA607	650
599	LM 48548/510/Q	473
600	LM 501349/310/Q	679
601	LM 501349/314/Q	893
602	LM 603049/011	872
603	LM 603049/012/Q	669
604	M 12649/610/Q	565
605	M 802048/011/Q	1340
606	M 86649/2/610/2/Q	890

607	M 88048/010/Q	866
608	VKT 8001 (30210)	698
609	VKT 8002 (31312 L)	2391
610	VKT 8024 (32005 X)	422
611	VKBC 1000 (30213)	1409
612	VKBC 1007 (32206)	581
613	VKBC 1002 (32208)	722
614	VKBC 1001 (30304)	416
615	VKBC 1003 (32220)	4699
616	VKBC 1004 (33210)	1512
617	VKBC 1005 (33211)	1685
618	VKBC 1009 (33217)	2796
619	VKBC 1018 (32009X)	688
620	VKT 8047 (33209)	858
621	VKT 8061 (32306)	652
622	VKT 8059 (3659)	503
623	VKT 8004 (32310)	1510
624	VKT 8006 (15100S/15250X)	533
625	VKT 8009 (3188S/3120)	865
626	Imported Tapered Roller Bearings	
627	BT1-0523/VU1006 (30307 type)	985
628	BT1-0524/VU1006 (32208 type)	814
629	BT1-0525/VU1006 (32209 type)	853
630	BT1-0526/VU1006 (30210 type)	793
631	BT1-0528 A/VU1006 (30216 type)	2019
632	BT1-0530/VU1006 (32219 type)	4390
633	BT1-0545 A/VU1006 (30212 type)	1211
634	BT1-0553 A/VU1006 (32220 type)	5758
635	VKBC 0960 (33205/Q)	1445
636	VKBC 0962 (32011 X/Q)	1560
637	VKBC 0964 (33012/Q)	6761
638	VKBC 0957 (497/460 L)	1885
639	VKBC 0958 (U 399/360 A/L)	1592
640	VKT 8091 (414819 B Type)	5721
641	HM 803149/110/VA6481	925
642	33013/VA6481	1125
643	HM 807046/110/VA6481	1207
644	33214/VA6481	1925
645	JL 819349/310/VA6481	1100
646	37431 A/625/VA6481	1325
647	37425/625/VA6481	1425
648	HM 518445/410/VA6482	2425
649	HM 218248/210/VA6482	1950
650	33206/VA6481	625
651	31305/VA6481	600
652	25877/820/VA6481	550
653	HM 89449/410/VA6481	850

654	32221/VA6481	5200
655	Spherical Roller Bearing	
656	VKT 8008 (22212CC)	2573
657	Cylindrical Roller Bearing	
658	VKT 8010 (NJ 310 N)	1261
659	VKT 8064 (NU2209EMN)	981
660	VKT 8056 (NUP 310 NR)	1241
661	VKT 8051 (NU 310 N)	1241
662	VKT 8060 (NU 309 E)	908

Do Not Copy

BB1 Series					
Variant	Segment	Suitable For Vehicle Make	Suitable For Vehicle Model	Application	MRP (Rs)
BB1-0016 A (62/22-2RS1 Type)	PC & UV	Tata Motors/ Fiat Motors	Indica Vista/Manza /Fiat Punto /Linea	Gearbox C- 510 Fuat	321
BB1-0037 CE (6203 type)	PC & UV	Tata Motors	Nano		
BB1-0078 (62/22-2RS1 Type)	PC & UV	Mahindra & Mahindra Ltd	Mahindra Jeep	Bosch GCM1 Alternator Drive End Bearing	237
BB1-0097 (6201 type)	PC & UV	Ford	Fiesta / Ikon	Spares /AVTEC Transmission	500
BB1-0234 (6205 type)	PC & UV	Tata Motors	Nano	Bosch GCM1 Alternator Drive End Bearing	178
BB1-0234 (6205 type)	PC & UV	Maruti Suzuki	Swift	Transmission	280
BB1-0372 AB (6202 type)	PC & UV	Hyundai Motors	Santra / Accent	Bosch Zelta Alternator Non Drive End Bearing	186
BB1-0372 BE (6202-2RS1 Type)	2W/3W SEGMENT	India Yamaha Motor Pvt Ltd	Alpha Plus	Gear Primary Drive (Secondary Belt)	186
BB1-0382 (6202 type)	PC & UV	Bosch	Alternator	Lucas Starter Bearing	202
BB1-0390 A (6200 type)	2W/3W SEGMENT	Hero Moto Corp	Passion	Clutch Cover Shaft	205
BB1-0420 A (6002 type)	PC & UV	Hyundai Motors	Santra / Accent	Bosch GCM 2 Rear Side Alternator	167
BB1-0434 (6303 type)	2W/3W SEGMENT	OMR Bagla Automobiles	NA	Electric Motor	279
BB1-0434 A (6303 type)	2W/3W SEGMENT	AUR. Motors Ltd	NA	Electric Motor	279
BB1-4724 B (60/22-2RS Type)	2W/3W SEGMENT	India Yamaha Motor Pvt Ltd	Alpha Plus	Transmission	254
BB1-0563 (6205 type)	PC & UV	Maruti Suzuki	Zen	BEHR Viscus Clutch System	320
BB1-0596 (62/22 type)	2W/3W SEGMENT	Mahindra & Mahindra Piaggio Motors India Yamaha Motors Ltd	Alfa Ape RZ	Rear Axle/Crankshaft	267
BB1-0633 A (6303 type)	PC & UV	Bosch/ Auto Ignition	Zeta	Alternator	429
BB1-0697 A (6201-2RSH Type)	2W/3W SEGMENT	Honda	Unicorn 160 CC	Main Shaft	128
BB1-0877 (6207-2RS1N Type)	PC & UV	Maruti Suzuki	EECO	REAR AXLE	589
BB1-3040 A (BB1-3040 type)	PC & UV	Tata Motors - Indica	Delphai TVS Pump	Lucas DPC Fuel Pump	525
BB1-3065 DC (BB1-3065 CE type)	PC & UV	Ford	Fiesta	Lucas TVS Alternator Drive End Bearing	370
BB1-3065 EA (6303 type)	PC & UV	Ford	Fiesta	Lucas TVS Alternator Drive End Bearing	370
BB1-3150 (6006)	2W/3W SEGMENT	Hero Moto Corp	CBZ	Main Shaft RH	388
BB1-3169 (6308/VE250 type)	CV & TRACTOR	Swaraj Mazda	T 3500	Main Shaft Bearing	1059
BB1-3191/HN3 (BB1-3191 type)	CV & TRACTOR	John Deere	5103	Drive Shaft	586
BB1-3191 (6008-2RS1 Type)	2W/3W SEGMENT	Royal Enfield	Machismo	Transmission	531
BB1-3264 (6305 type)	PC & UV	Toyota		Transmission /Lucas TVS Alternator	1067
BB1-3273 (6308 E type)	PC & UV	Toyota	Fortuner	Input Shaft Rear Side (R150 transmission)	1375
BB1-3273 A (6308-2RS1 Type)	PC & UV	Mahindra & Mahindra Ltd	Scorpio - New Model	Rear Axle	1264
BB1-3274 (6206-2RS1 Type)	PC & UV	Toyota	Fortuner	Output Rr side, R150 transmission	590
BB1-3275 (6307 E type)	PC & UV	Toyota	Fortuner	Output Ct side, R150 transmission	1220
BB1-3284 (6206 type)	PC & UV	Maruti Suzuki	Zen	Steering Bearing	779
BB1-3358 (6213 type)	CV & TRACTOR	Tafe	MF 1035 DI, 30 DI - IDB Rear Axle Dura Brake Mod	Rear Axle IDB Model	2031
BB1-3374 A (6308-2RS1 Type)	PC & UV	Mahindra & Mahindra Ltd	Zylo / Scorpio	Rear Axle Bearing	711
BB1-3459 (6306 E type)	PC & UV	Mahindra & Mahindra Ltd	XUV 500 All Wheel Drive / Xylo	Transmission Input Shaft	618
BB1-4700 A (61804 type)	PC & UV	Maruti Suzuki	Alto / Wagon R	Steering	182
BB1-4701 (6302 type)	2W/3W SEGMENT	Hero Moto Corp	Achiever/Hunk/CBZ	Transmission	443
BB1-4702 A (6302 type)	2W/3W SEGMENT	Honda	Aciva / Deo	Crank case	282
BB1-4704 (6203 type)	2W/3W SEGMENT	Yamaha	Crux/Libero/Alba/Gladiator	Crank Shaft	267
BB1-4705 AE (6305-2RS1 Type)	2W/3W SEGMENT	India Yamaha Motor Pvt Ltd	Alpha Plus	CRANK SHAFT	399
BB1-4705 B (6305 E type)	2W/3W SEGMENT	India Yamaha Motor Pvt Ltd	FZ 16	Crank Shaft	399
BB1-4705 BA (6305-2RS1 Type)	2W/3W SEGMENT	Yamaha	FZ150/SZ150/Fazer/Saluto	Crank Shaft Right	337
BB1-4712 (6004 type)	CV & TRACTOR	Tata Motors	Indica	Lucas Starter Bearing	246
BB1-4714 (6004 type)	2W/3W SEGMENT	YAMAHA	FX/R15	Transmission	223
BB1-4719 (6305-2RS1 Type)	2W/3W SEGMENT	India Yamaha Motor Pvt Ltd	FZ 16	Crank Shaft	428
BB1-4721 (6003 type)	2W/3W SEGMENT	YAMAHA	FX/R15	Transmission	201
BB1-4722 (6203 type)	2W/3W SEGMENT	YAMAHA	FX/R15	Transmission	201
BB1-4728 (6206 type)	2W/3W SEGMENT	LML	Supreme /Star /Select II/Pulse	Engine	397
BB1-4730 (6002-2RSH Type)	2W/3W SEGMENT	Yamaha	Clutch lifter baring	Clutch Lifter Bearing	177
BB1-4751 C (6203-2RSH Type)	2W/3W SEGMENT	Honda	Unicorn 160 CC	Counter Shaft	216
BB1-4752 C (6205-2RSH Type)	2W/3W SEGMENT	Suzuki India Limited	New Access 125 CC	Crank Shaft	204
BB1-4753 C (6007-2RS1 Type)	2W/3W SEGMENT	Suzuki Motors	Gixxer	Engine	291
BB1-4758 E (6203-2RSH Type)	2W/3W SEGMENT	Honda	Unicorn 160 CC	Cam Shaft	152
BB1-4787 A (6202-2RSH Type)	2W/3W SEGMENT	Honda	Unicorn 160 CC	Balancer Shaft -Left And Right	129
BB1-4800 (6305-2RS1 Type)	2W/3W SEGMENT	India Yamaha Motor Pvt Ltd	Alpha Plus	Crank Front	374
BB1-4823 (6304-2RSH Type)	2W/3W SEGMENT	Yamaha	RX 110	Crank shaft	201
BB1-4850 A	2W/3W SEGMENT	Honda	Activa 110 CC 6G	Engine Crackshaft Right	199
BB1-4854 E	2W/3W SEGMENT	Honda	Activa 110 CC 6G	Engine Crackshaft Left	187
BB1B 446740 CD (6007-2RS1 Type)	PC & UV	Mahindra & Mahindra	XUV 500	Intermediate shaft	682
BB1B 446740 CE (6007-2RS1 Type)	PC & UV	Mahindra & Mahindra Ltd	XUV 500	Drive Shaft	773
BB1B 630819 A (6304 type)	2W/3W SEGMENT	Bajaj	Saffire	Crankshaft	388
BB1B 630819 A/HN3 (6304 type)	2W/3W SEGMENT	Bajaj	Safire	Crank shaft	388
BB1B 631046 B	PC & UV	Tata Motors / Fiat	Indica Vista/Manza /Fiat Punto /Linea	Main Shaft	505

HUB Bearings				
Variant	Application	Suitable for vehicle make	Suitable for Vehicle Models	MRP (Rs)
BAH-0013 D	Rear Wheel	Piaggio	Ape truck	1540
BAH-0031 D	Front Wheel	Fiat India	Palio	981
BAH-0036	Front Wheel	Tata Motors	Vista, Indigo, Manza	1246
		Ford India	Ikon	
BAH-0052	Front Wheel	Tata Motors	Indica	1054
		Fiat India	Uno, Palio, Siena	
BAH-0052 C	Rear Wheel	Bajaj Auto	MEGA RE Diesel	1191
	Front Wheel	Mahindra & Mahindra	Maximo	
BAH-0087	Front Wheel	Maruti Suzuki	Maruti 800, Omni, Esteem, Zen (New)	921
BAH-0104	Front Wheel	Maruti Suzuki	Alto & WagonR (old models)	1031
BAH-0109 B	Front Wheel	Ford India	Fiesta, Fusion, Ikon, Figo	1222
BAH-0179	Rear Wheel	Tata Motors	Indica, Indigo	1102
		Maruti Suzuki	Marina, Vista, Manza RitZ	
BAH-0202 B		Tata Motors	Ultra 10.2, Ultra 7.5, Ultra 8.5	1095
BAH-0221	Front Wheel	Maruti Suzuki	Alto K10, WagonR, Zen Estilo, A-Star (New Models)	817
BAH-0229	Front Wheel	Maruti Suzuki	Swift, Swift Dzire, Ritz, Ciaz	1155
BAH-0230	Front Wheel	Maruti Suzuki	Swift, Swift Dzire	1054
	Non ABS,	Piaggio	FW Non ABS	
	Rear Wheel		Piaggio Porter RW	
BAH-0259 A	Front Wheel	Tata Motors	Zest, Bolt	1428
BAH-0259 B	Front Wheel	Tata Motors	Zest, Bolt, Indigo, Tiago, Tigor, Nexon	1500
BAH-0261	Front Wheel	Mahindra & Mahindra	Verito, Vibe, Logan Micra	1614
	Non ABS	Nissan Renault	Sunny, Pulse	
BAH-0263	Front Wheel ABS	Mahindra & Mahindra	Verito, Vibe, KUV 100	1695
BAH-0265	Front Wheel	Renault India Limited	KWID	833
BAH-0275	Rear Wheel	Maruti Suzuki	Swift, Swift Dzire,	1173
BAH-0278	Rear Wheel	Maruti Suzuki	Alto, A Star, Wagon R, Estilo	1148
BAHB-636193 C	Front Wheel	Hyundai Motors	Santro, Accent, Getz, i10, i20	1304
BAHB-636149 CC	Front Wheel ABS	Maruti Suzuki	Ertiga, SX4	1642
BAHB-636149 CD	Front Wheel	Maruti Suzuki	Ertiga, SX4	1434
	Non ABS,	Tata Motors	Tata Winger	
Taper HUB Bearing				
BTH-1024 AE	Front Wheel	Mahindra & Mahindra	Xylo, Scorpio	2068
BTH-1206 AB	Rear Wheel	Ford India	Fiesta, Fusion, Figo	2283
BTH-1238	Rear Wheel	Tata Motors	Ace Pickup, Iris	1674
VKBC 1008 (BTHB 329129 DE)	Rear Wheel	Tata Motors	Xenon, 207 DI (New Model)	2231
BTH-1256	Front Wheel	Toyota Motors	Innova	2082
BTH-1258	Rear Wheel	Isuzu D Max	Cross 4*4 Pickup	2080
BTH-1265 A	Front Wheel	Mahindra & Mahindra	TUV 300	2141
Imported HUB Units				
VKBC 0968	Front Wheel	Toyota	Corolla E1, Altis	2322
VKBC 0969	Front Wheel	Toyota	Camry	3428
VKBC 0970	Front Wheel	Honda	Accord	3428
VKBC 0971	Front Wheel	Mitsubishi	Lancer	1880
VKBC 0979	Front Wheel	Skoda	Octavia	1935
VKBC 0980	Front Wheel	Skoda	Fabia	5806
VKBC 0981	Front Wheel	Skoda	Laura	5253
VKBC 0993	Rear Wheel	Hyundai Motors	Accent ABS	3760
VKBC 0994	Rear Wheel	Hyundai Motors	Accent Non ABS	3428
VKBC 0995	Rear Wheel	Hyundai Motors	Santro Non ABS	3317
VKBC 0996	Rear Wheel	Hyundai Motors	Santro ABS	3705
VKBC 0997	Rear Wheel	Hyundai Motors	i10, i20, Getz, OLD Verna, Grand i10 Non ABS	4700
VKBC 0998	Rear Wheel	Hyundai Motors	i10, i20, Getz, OLD Verna, Grand i10 ABS	5806
VKBC 0999	Rear Wheel	Hyundai Motors	Verna Fluidic ABS	5529



SKF premium grease



Seals



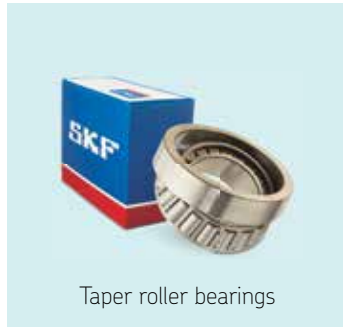
Hub bearing units



Centre support bearings



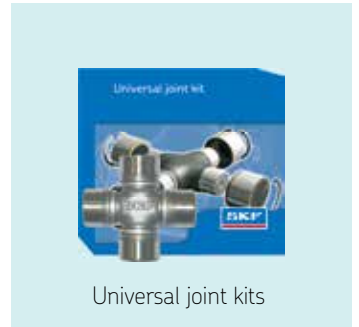
Deep groove ball bearings



Taper roller bearings



2W application kit



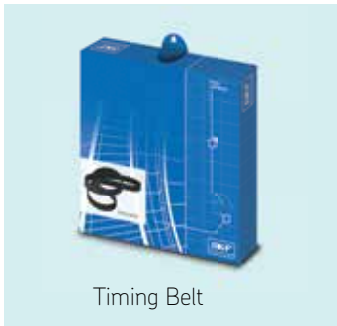
Universal joint kits



Chain and Sprocket



Steering and Suspension



Timing Belt

Install confidence , install SKF!

Vehicle Service Market
SKF India Limited
Chinchwad , Pune 411 033 India
Tel: +91-20-6611 2500
CIN: L29130MH1961PLC011980

Scan QR code
for any support



<https://bit.ly/37VQY1b>

To know more about SKF VSM's complete range of products: Download our free app from google play and iOS app store just search for VSM SKF India parts



skf.com | skfindia.com

© SKF is a registered trademark of the SKF Group

This edition of Maximum Retail price of SKF products are as on January 1, 2022. For latest information please contact your nearest SKF Automotive Distributor. (Please visit our website to locate a distributor near you.) M.R.P. given in this list are recommended prices , retailers/distributors are free to sell below the M.R.P.

Prices are subject to change without prior notice.

The contents of this publication are the copyright of the publisher and must not be reproduced (even extracts) unless permission is granted. Every care has been taken to ensure the accuracy of the information contained in this publication but no liability for any loss or damage whether direct , indirect or consequential arising out of the use of the information contained herein.

Certain image(s) used under license from Shutterstock.com.