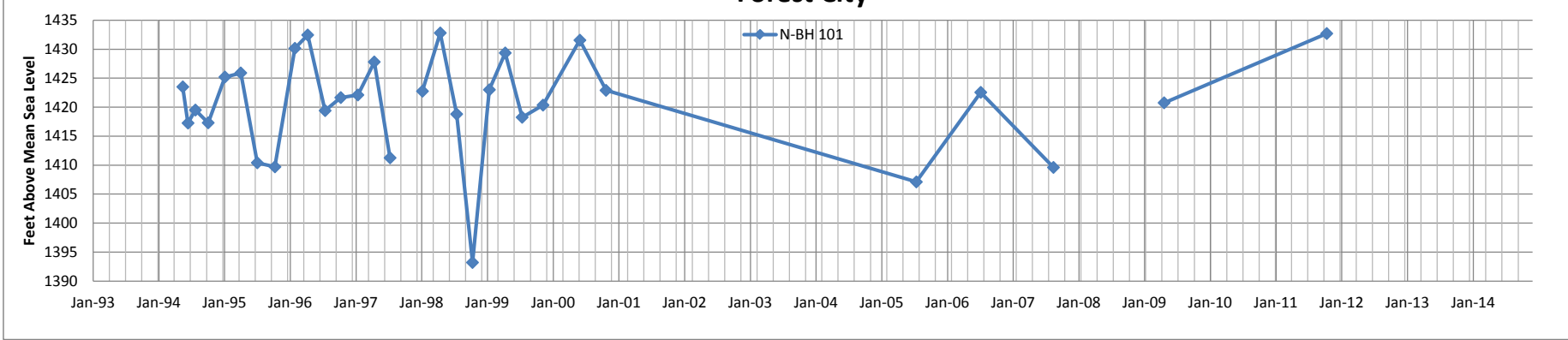
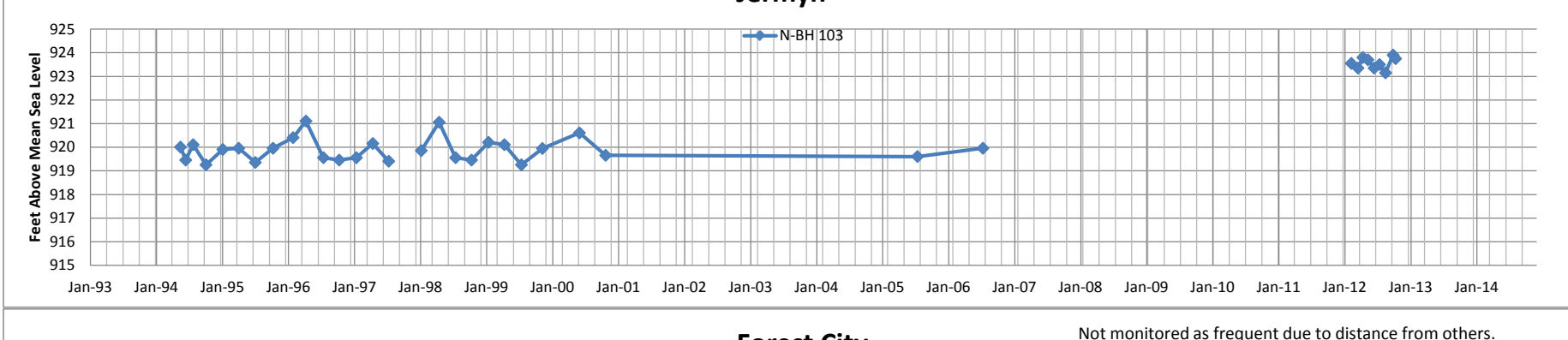
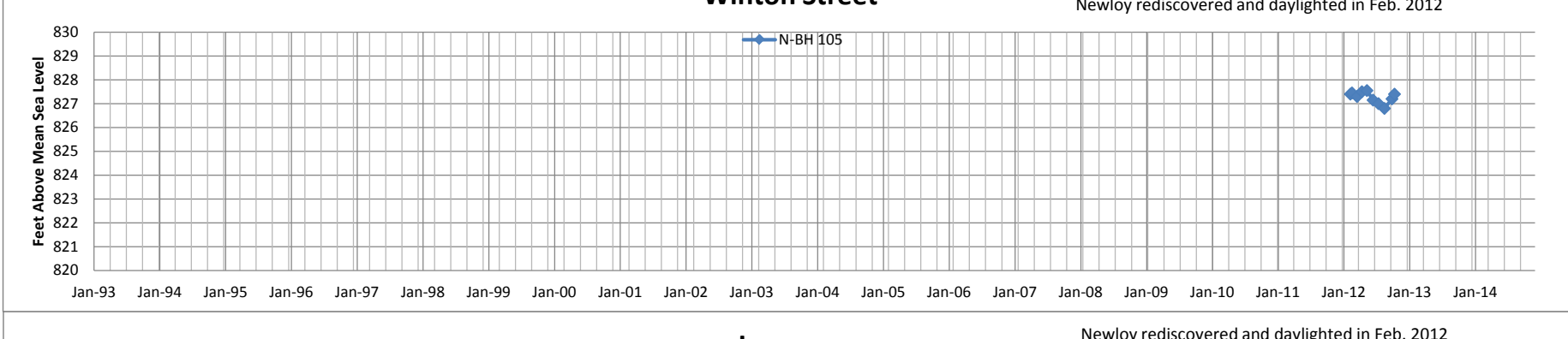
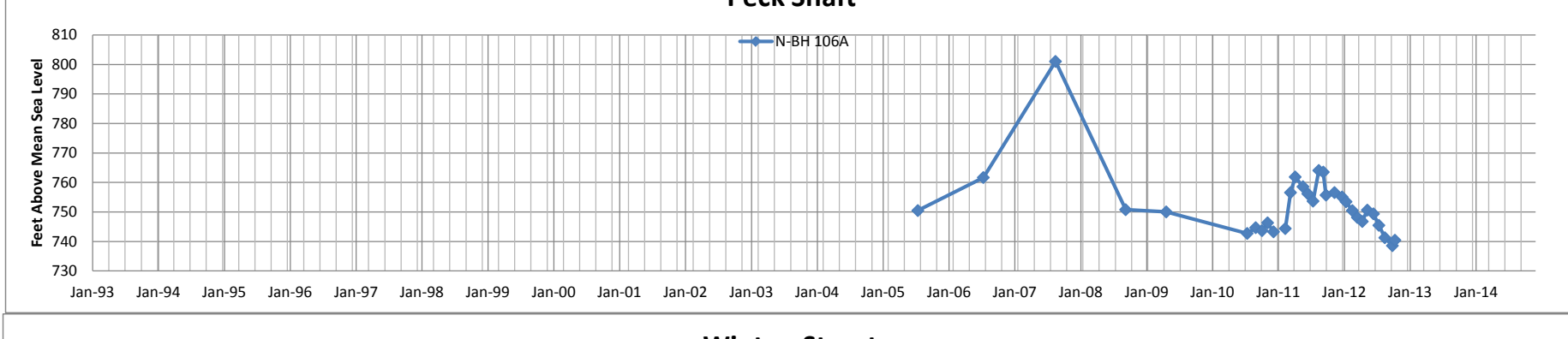
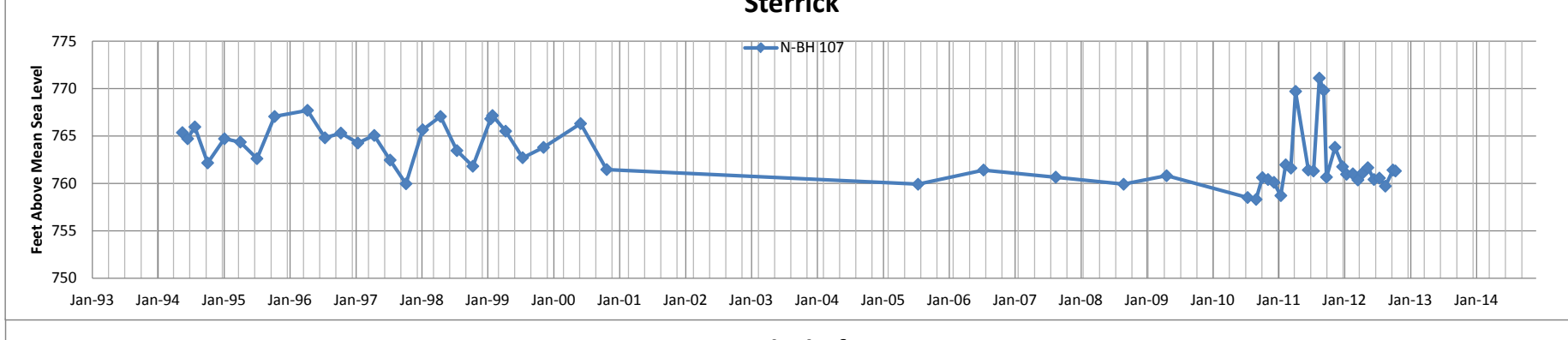
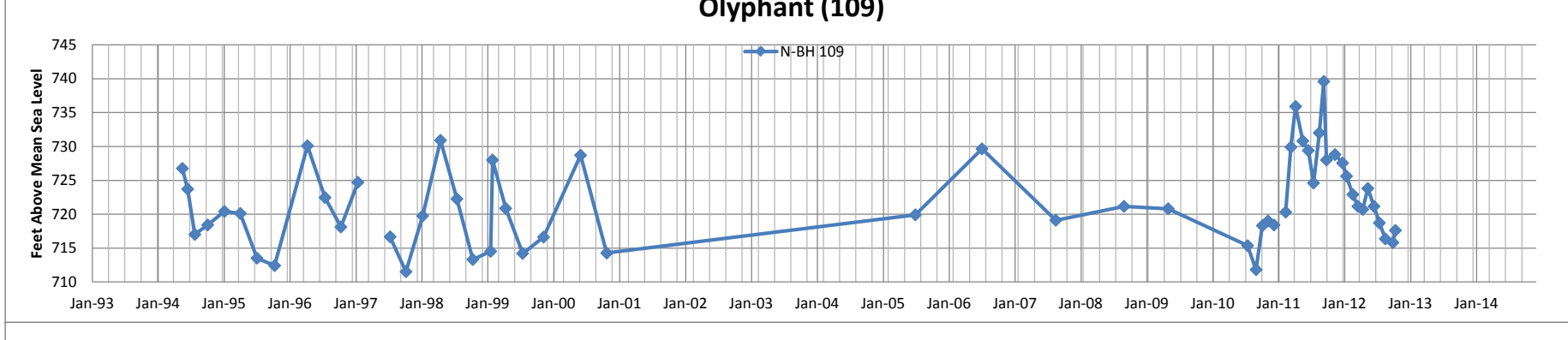
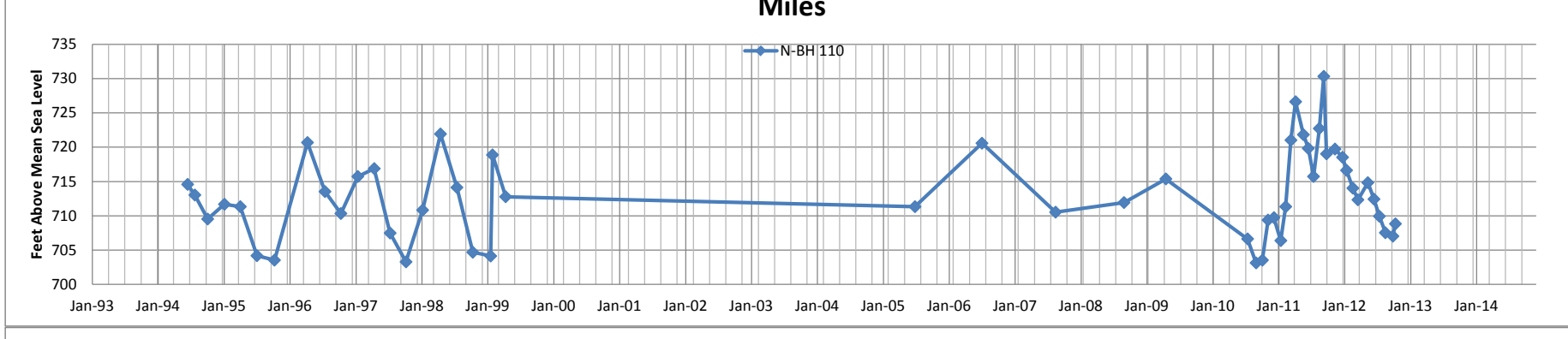
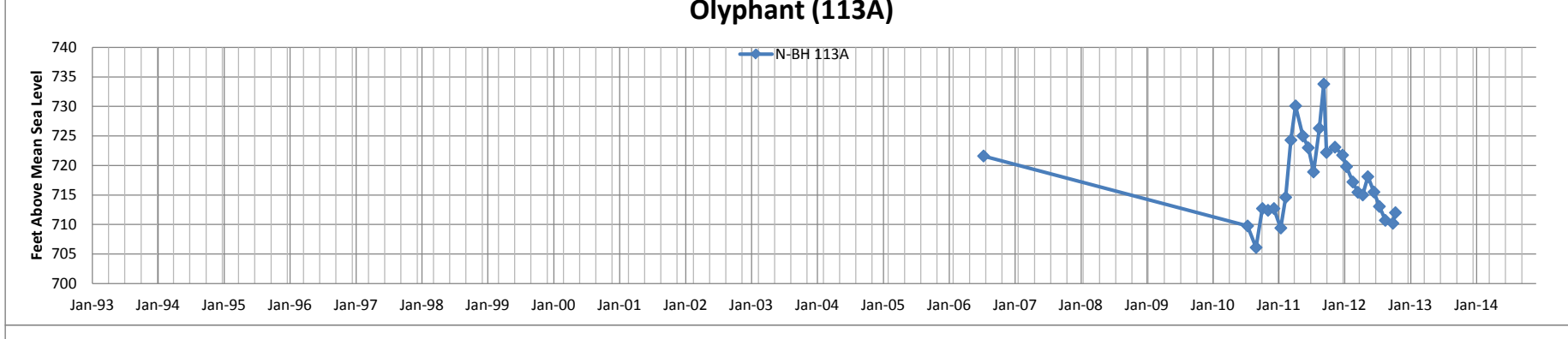
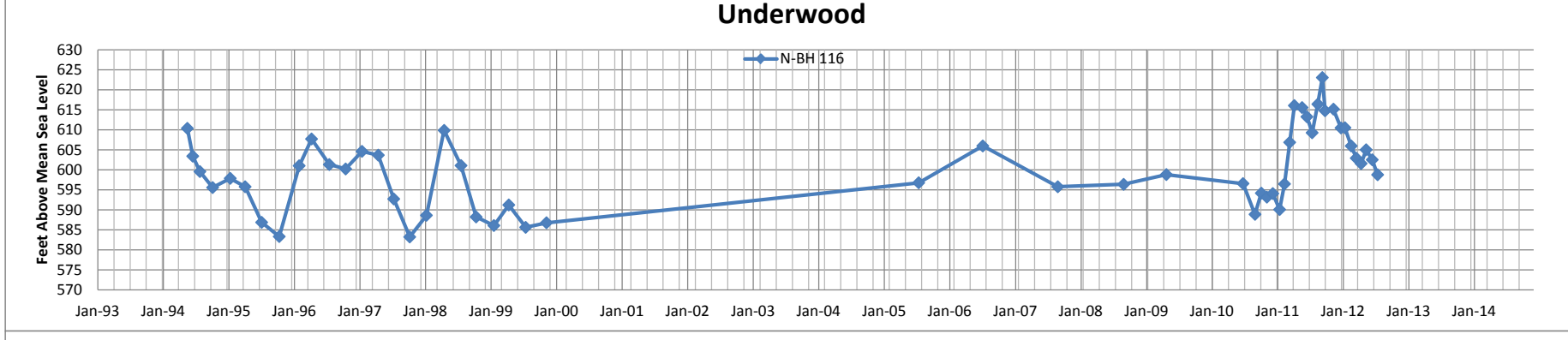
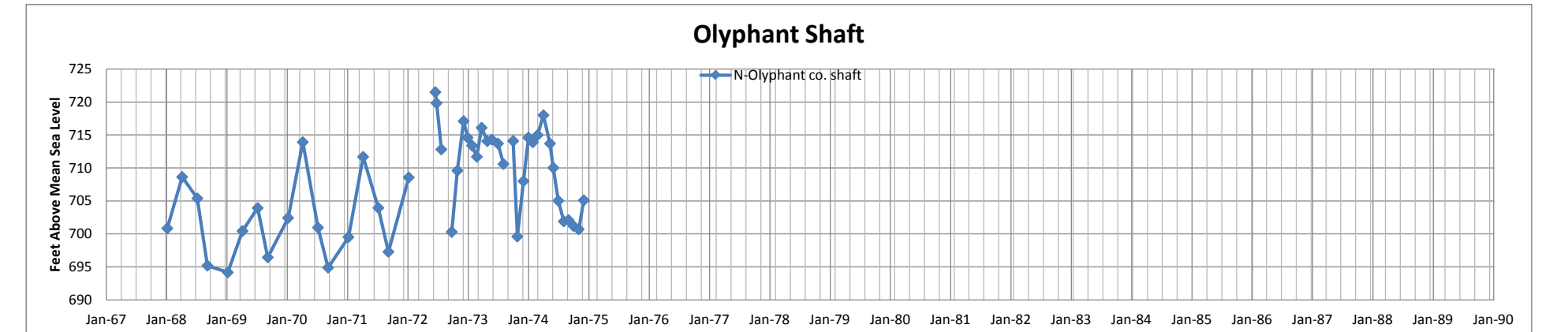
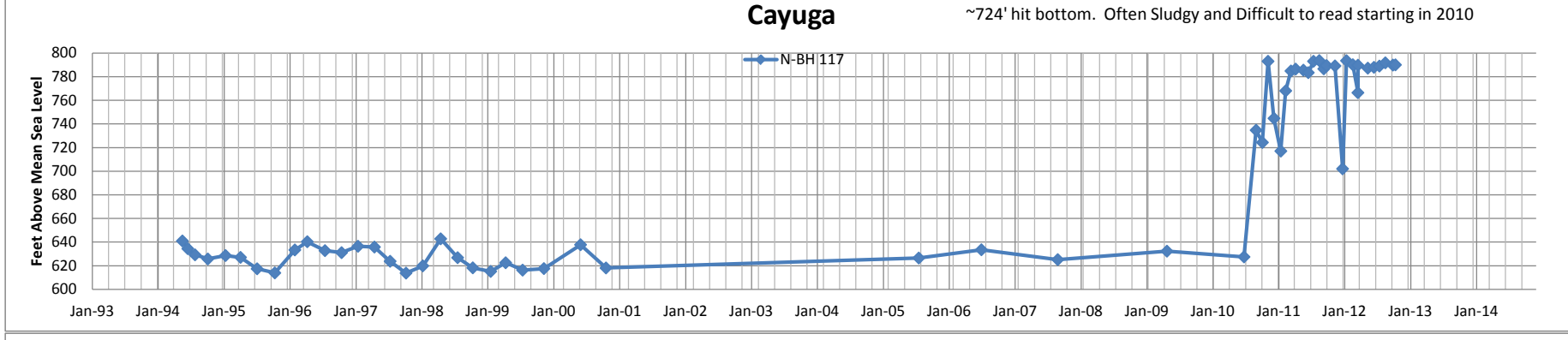
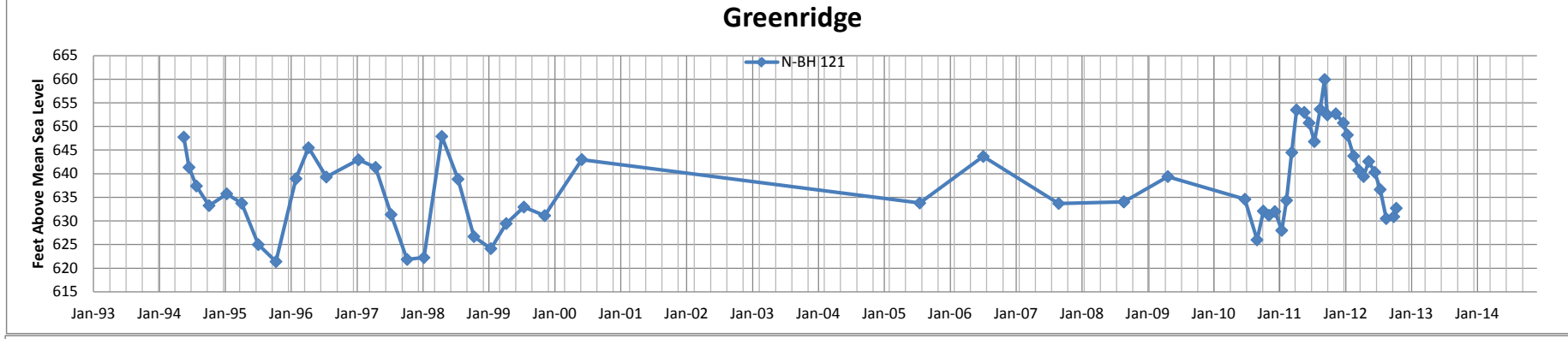
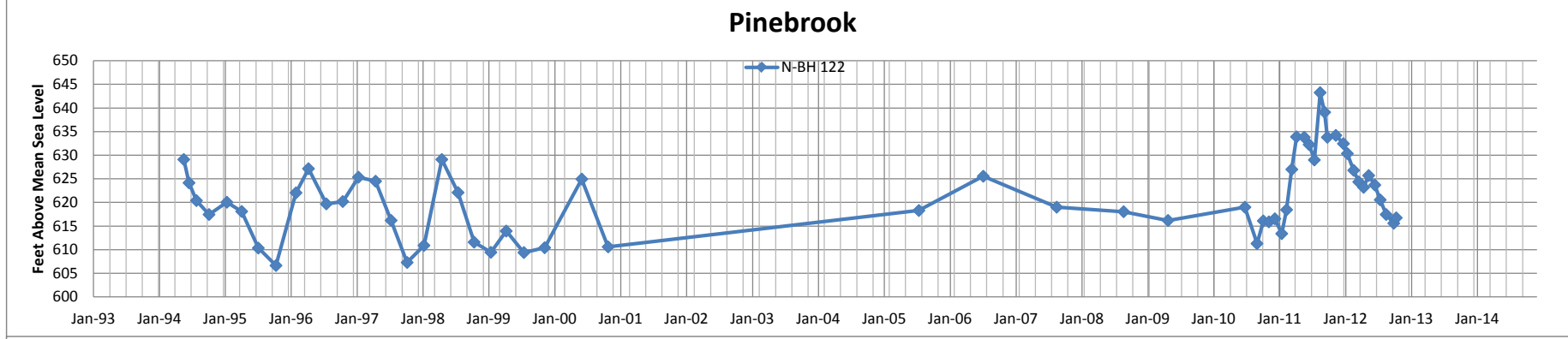
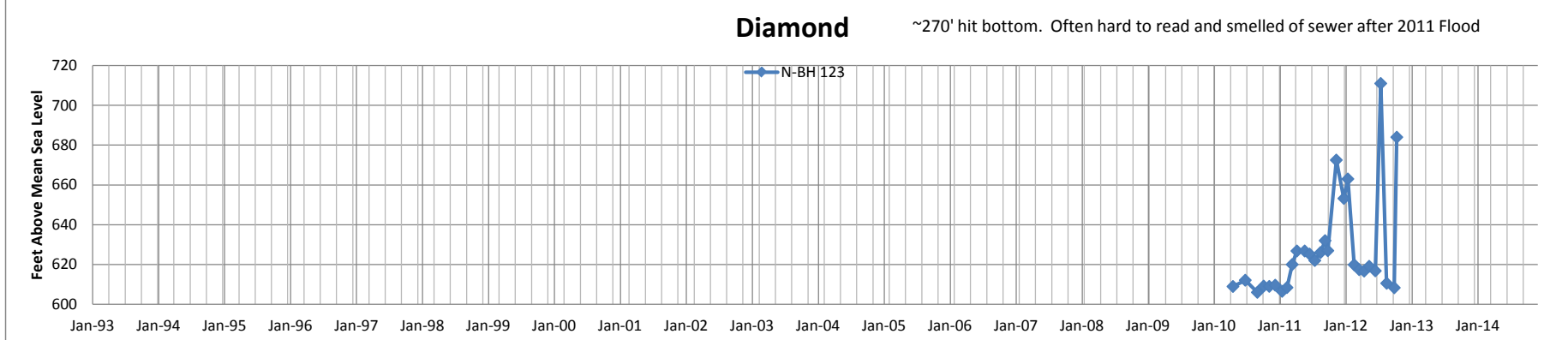
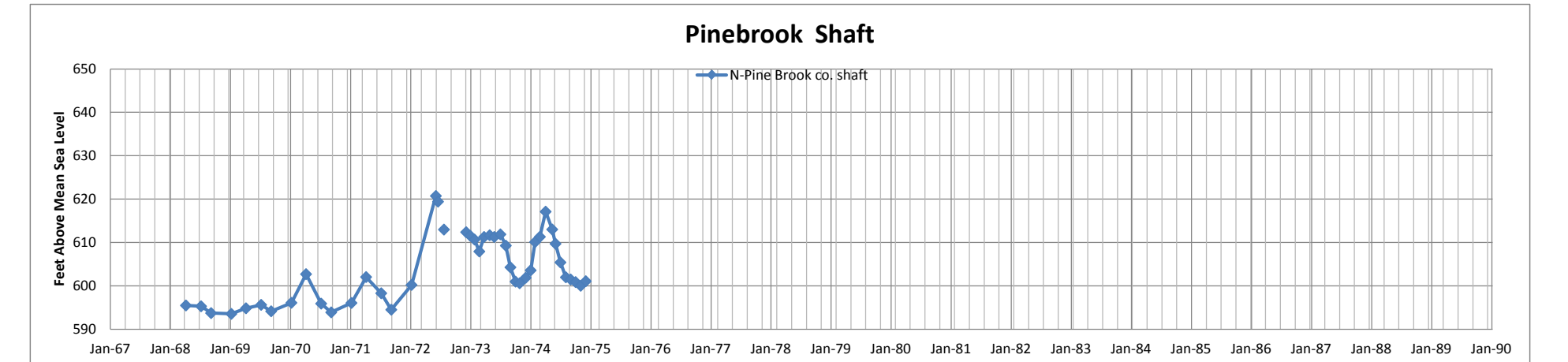
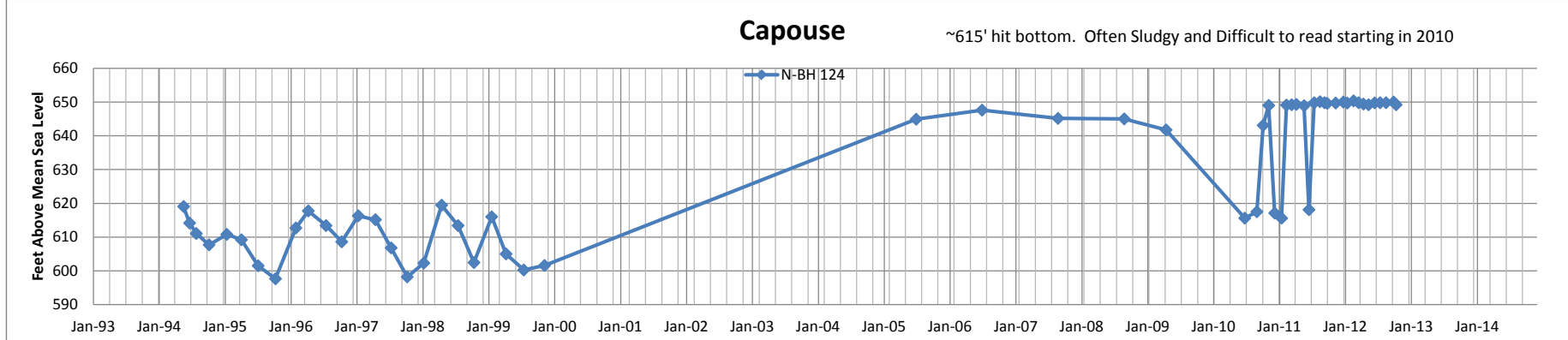
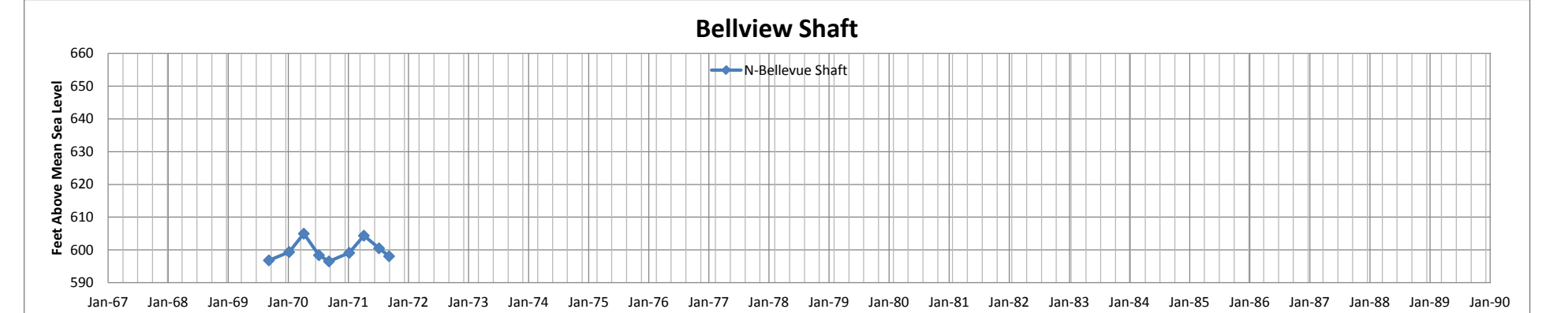
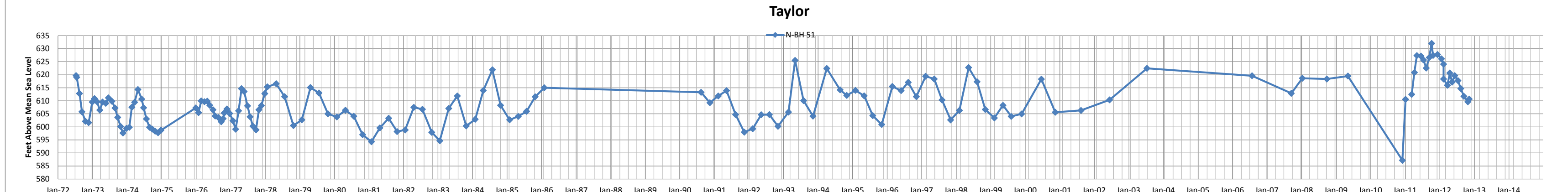
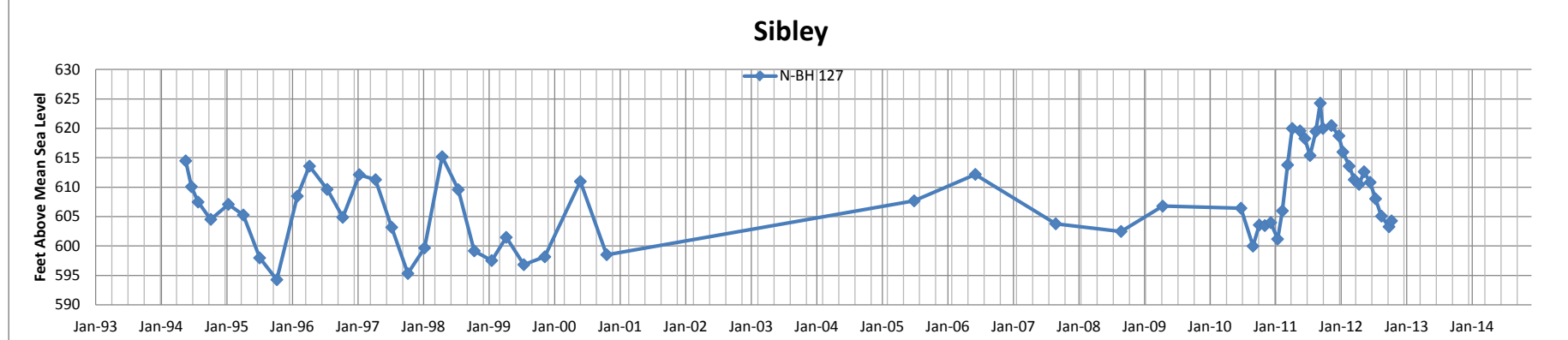
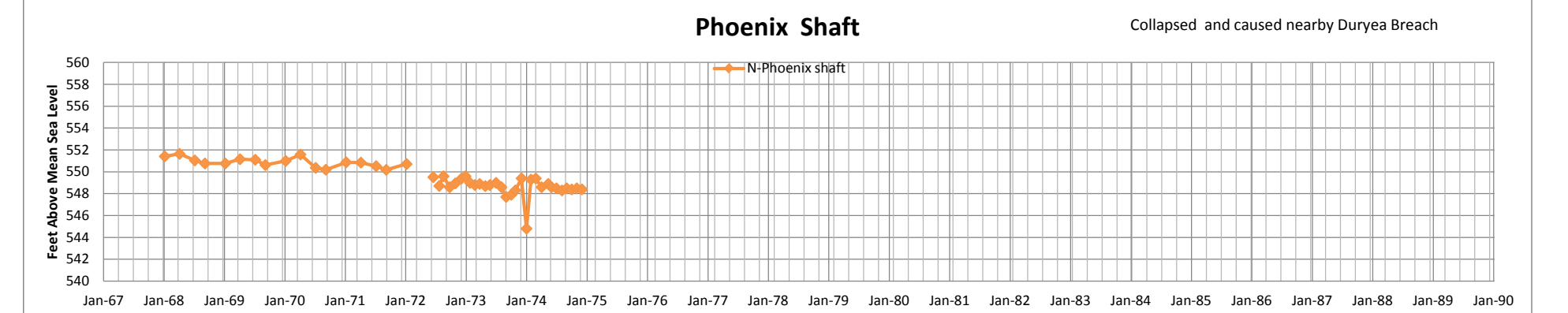
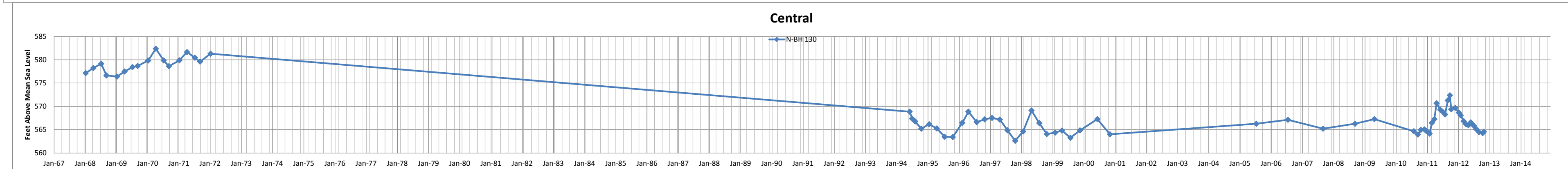
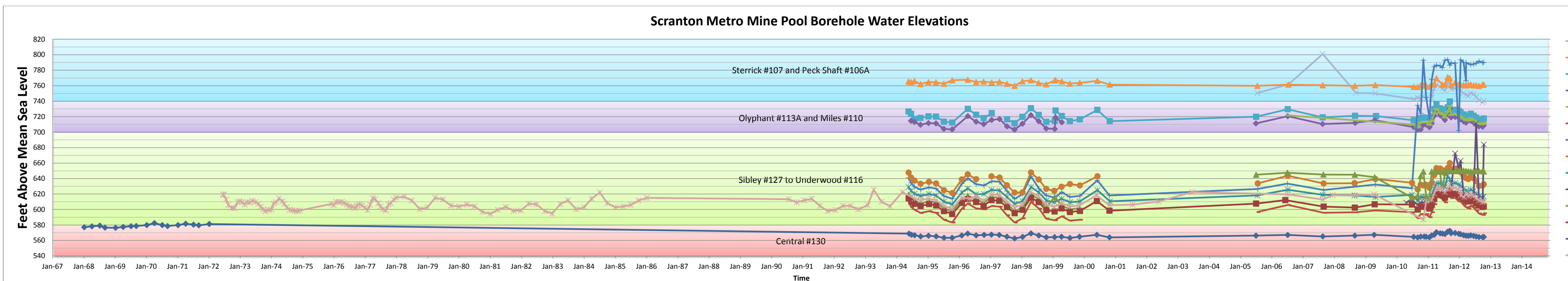
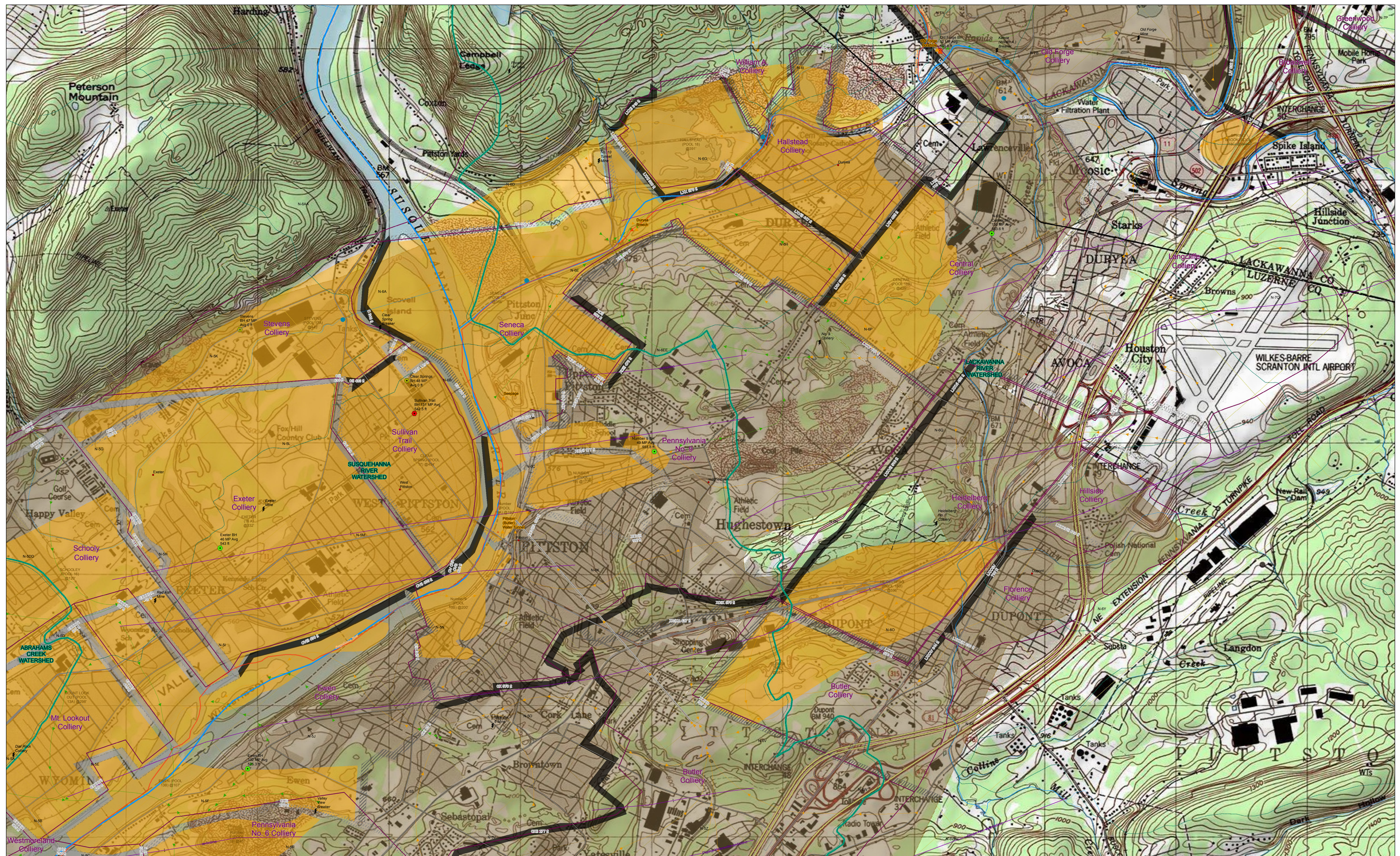


## **Appendix B**

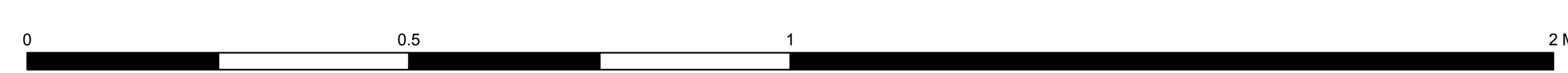
### **Large format Maps and Charts in Digital Format on CD**



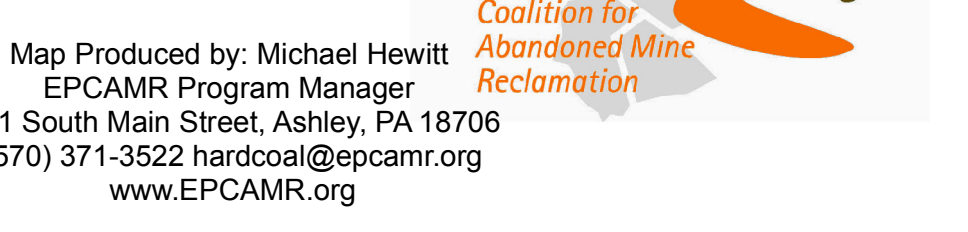


**Legend**

- |   |  |  |  |   |   |   |  |  |  |   |   |
|---|--|--|--|---|---|---|--|--|--|---|---|
| <ul style="list-style-type: none"> <li>• Historic_Colliery</li> <li>&lt;all other values&gt;</li> </ul> | <ul style="list-style-type: none"> <li>— anticline</li> <li>— anticline-syncline pair</li> <li>— dome</li> <li>— syncline</li> </ul> | <ul style="list-style-type: none"> <li>— Anticline</li> <li>— Divide</li> <li>— Fault</li> <li>— Major Watersheds (Act 167)</li> <li>— Smallsheds (EPCAMR Attributes)</li> <li>— AMD Impacted Streams (Integrated List '12)</li> </ul> | <ul style="list-style-type: none"> <li>0.00 - 3.70</li> <li>3.71 - 11.00</li> <li>11.01 - 27.00</li> <li>27.01 - 45.00</li> <li>45.01 - 97.00</li> </ul> | <ul style="list-style-type: none"> <li>▲ Discharge</li> <li>● Instream</li> </ul> | <ul style="list-style-type: none"> <li>— 1st Order</li> <li>— 2nd Order</li> <li>— 3rd Order</li> </ul> | <ul style="list-style-type: none"> <li>— 4th Order</li> <li>— 5th Order</li> <li>— 6th order</li> <li>— 7th order</li> <li>— 8th order</li> </ul> | <ul style="list-style-type: none"> <li>— All Roads</li> <li>— Interstate</li> <li>— US Traffic Rte</li> <li>— PA Traffic Rte</li> <li>— Other</li> </ul> | <ul style="list-style-type: none"> <li>PA_COUNTY</li> <li>Collieries</li> <li>Boreholes</li> <li>Unknown</li> <li>accessible</li> <li>inaccessible</li> <li>discharging</li> </ul> | <ul style="list-style-type: none"> <li>Mine_Pool_Flow_Lines</li> <li>Newer</li> <li>Reference</li> <li>ASH BOM</li> <li>SCARLIFT</li> <li>EPCAMRTunnels</li> </ul> | <ul style="list-style-type: none"> <li>Barrier Pillars (Ash &amp; EPCAMR)</li> <li>Unknown</li> <li>INTEGRITY</li> <li>Solid</li> <li>Breached; Semi-Permeable</li> <li>Submerged; Removed</li> </ul> | <ul style="list-style-type: none"> <li>Mine Pools (Ash &amp; Scarlift)</li> <li>EPCAMRGeobasins (only)</li> <li>OSMfolioidex</li> </ul> |
|---|--|--|--|---|---|---|--|--|--|---|---|

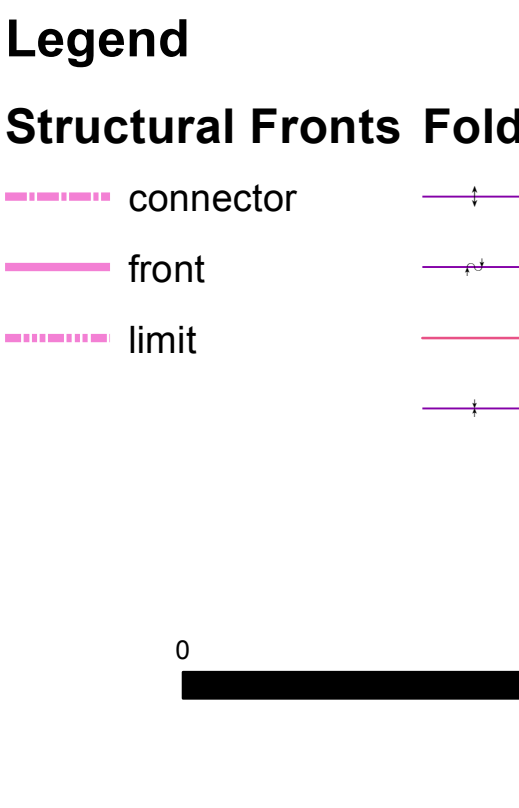
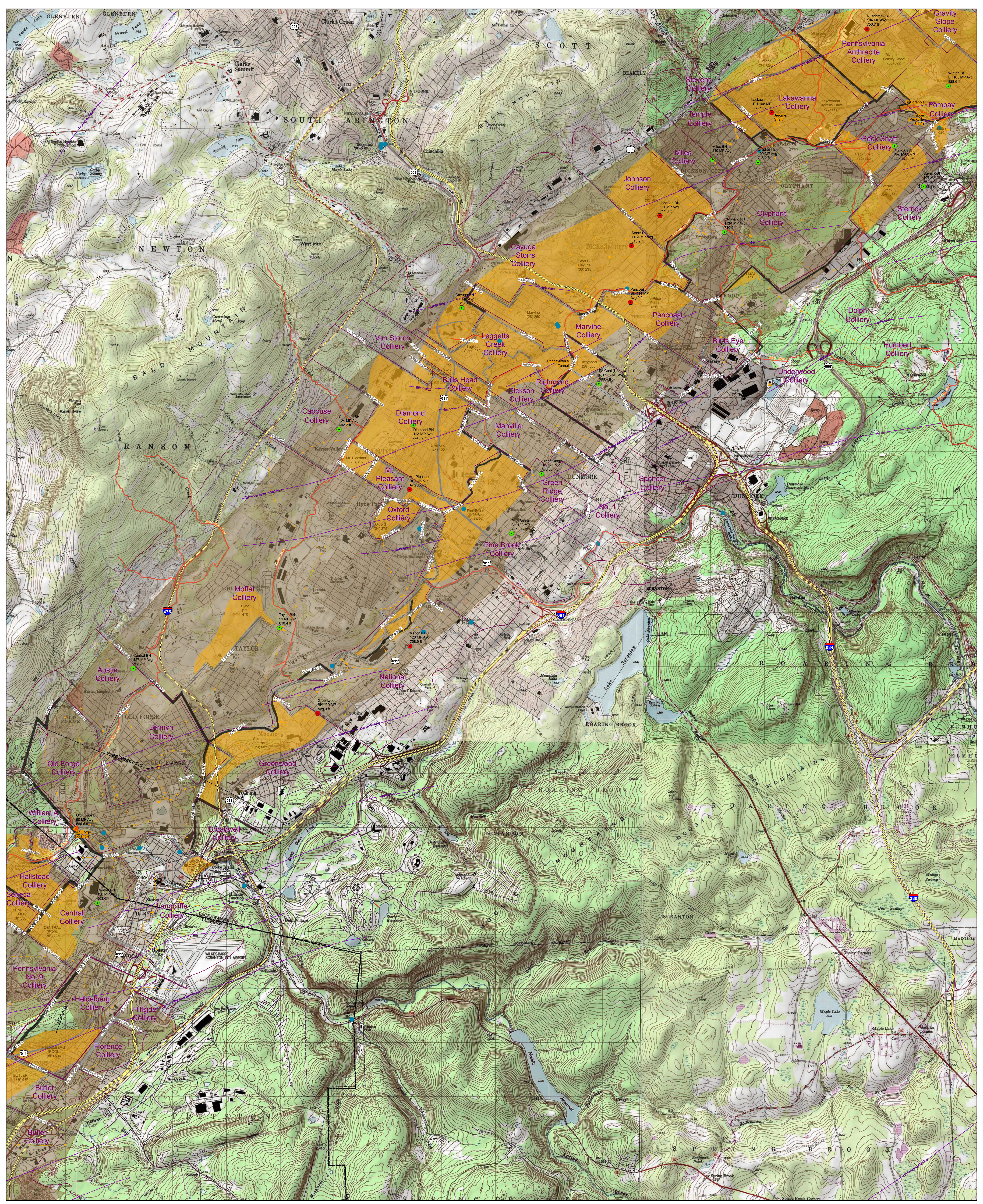


Absolute Scale 1:10,000



Map Produced by: Michael Hewitt  
EPCAMR Program Manager  
101 South Main Street, Ashley, PA 18706  
(570) 371-3522 hardcoal@epcamr.org  
www.EPCAMR.org

Date: 10/2/2012 Path: Z:\EPCAMR\_PM\_Files\Projects\Mine Pool Mapping\MinePoolMapping.mxd



**Legend**

**Structural Fronts Folds**

- connector
- front
- limit
- anticline
- anticline-syncline pair
- dome
- syncline

**Geologic Folds (EPCAMR)**

- Anticline
- Divide
- Fault
- AMD Impacted Streams (Integrated List '12)

**FLOW\_CFS**

**Anth WQ DB Pts (SRBC)**

- 0.00 - 3.70
- 3.71 - 11.00
- 11.01 - 27.00
- 27.01 - 45.00
- 45.01 - 97.00

- Discharge
- Instream

**US Routes and Interstates**

- Interstate
- US Traffic Rte

**PA\_COUNTY**

- Collieries

**Boreholes**

- Unknown
- accessible
- inaccessible
- discharging

**Barrier Pillars (Ash & EPCAMR)**

- Unknown
- Solid
- Breached; Semi-Permeable
- Submerged; Removed

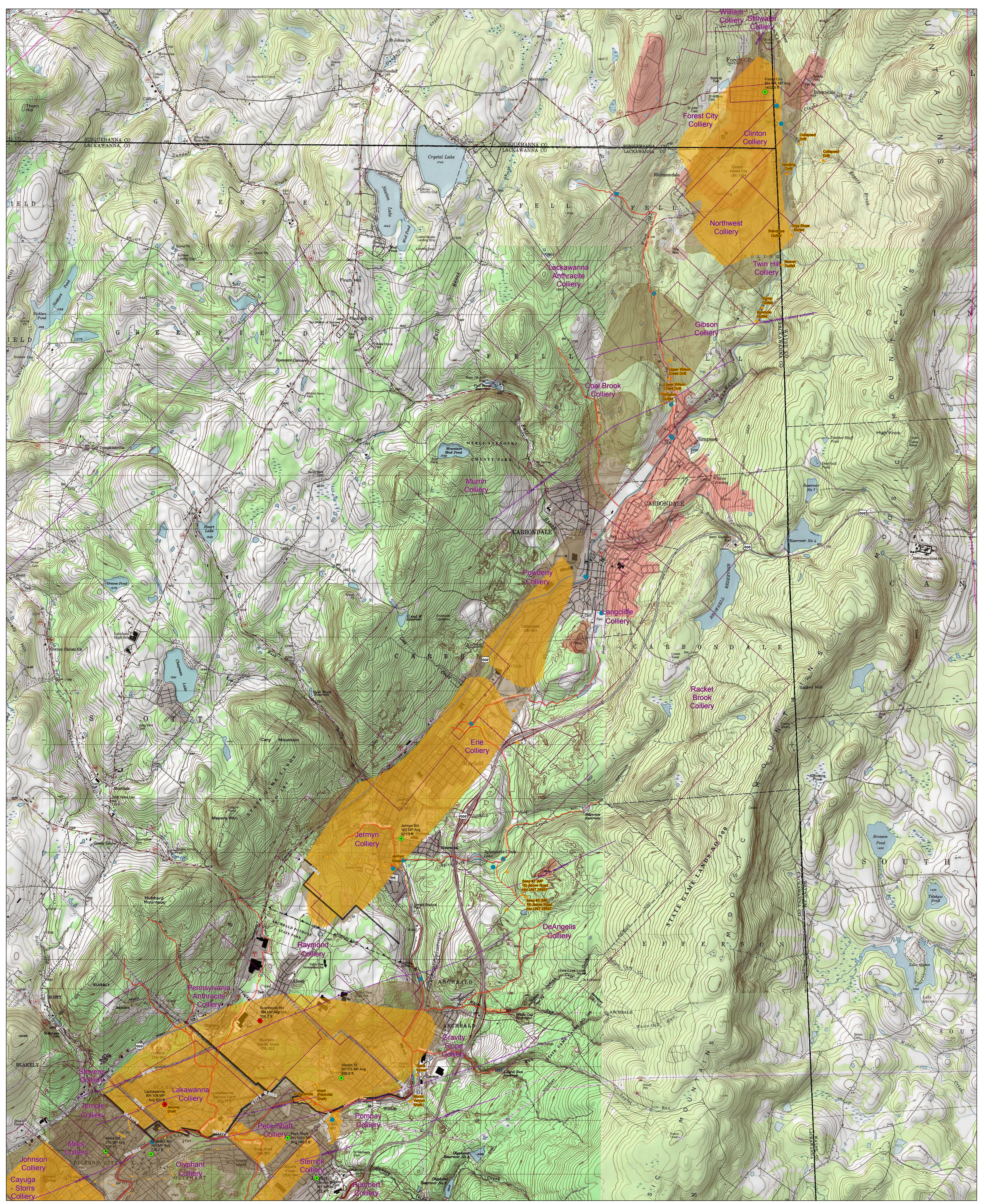
**Mine Pools (Ash & Scarlift)**

- EPCAMR Geobasins (only)

**INTEGRITY**

**EPCAMR**

Map Produced by: Michael Hewitt  
EPCAMR Program Manager  
101 South Main Street, Ashley, PA 18706  
(570) 371-3522 hardcoal@epcamr.org  
www.EPCAMR.org



**Legend**

- Structural Fronts Folds**
- connector
  - front
  - limit
  - anticline
  - anticline-syncline pair
  - dome
  - syncline

- Geologic Folds (EPCAMR)**
- Anticline
  - Divide
  - Fault
  - AMD Impacted Streams (Integrated List '12)
- FLOW\_CFS**

- Anth WQ DB Pts (SRBC)**
- 0.00 - 3.70
  - 3.71 - 11.00
  - 11.01 - 27.00
  - 27.01 - 45.00
  - 45.01 - 97.00
- US Routes and Interstates**
- Route Type
  - Interstate
  - US Traffic Rte

- PA\_COUNTY**
- Collieries
- Boreholes**
- Unknown
  - accessible
  - inaccessible
  - discharging

- PA\_COUNTY**
- Collieries
- Barrier Pillars (Ash & EPCAMR)**
- Unknown
  - Solid
  - Breached; Semi-Permeable
  - Submerged; Removed

- Mine Pools (Ash & Scarlift)**
- Mine Pools (Ash & Scarlift)
  - EPCAMR Geobasins (only)
- INTEGRITY**



6 Miles

Absolute Scale 1:24,000

Date: 8/14/2012 Path: Z:\EPCAMR\_PM\_Files\Projects\Mine Pool Mapping\MinePoolMapping.mxd

Map Produced by: Michael Hewitt  
 EPCAMR Program Manager  
 101 South Main Street, Ashley, PA 18706  
 (570) 371-3522 hardcoal@epcamr.org  
 www.EPCAMR.org