

BRUSH GUIDE

- Thin Lines
- Tiny Details
- Monogramming

LINER



- Long Lines
- Scrolling
- Stroke Work

SCRIPT LINER



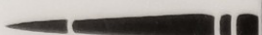
- Broad Lines
- Stroke Work
- Calligraphy

ROUND



- Broad Lines
- Stroke Work
- Calligraphy

DETAIL



- Round Shapes
- Petals
- Blending

FILBERT



- Multiple Lines
- Varied Round Ends
- Hair / Feathers

FILBERT COMB



- Multiple Lines
- Varied Flat Ends
- Hair / Feathers

COMB



- Three Sides
- Ribbons / Borders
- Petals / Leaves

TRIANGULAR



- Striping
- Ribbons
- Veining

DAGGER STRIPER



- Blending
- Heavy Colors
- Short Strokes

CHISEL BLENDER



- Square Shapes
- Sharp Edges
- Float / Blend

SHADER / FLAT



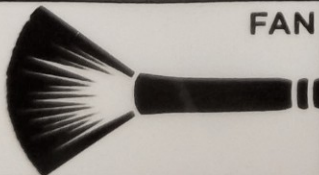
- Angle Shapes
- Petals
- Float / Blend

ANGULAR



- Fur / Foliage
- Petals
- Hair / Feathers

FAN



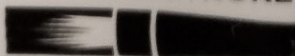
- Multiple Lines
- Varied Ends
- Hair / Feathers

ANGULAR



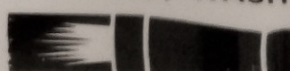
- Lettering
- Long Strokes
- Sharp Lines

ONE STROKE



- Base Coating
- Broad Strokes
- Heavy Blending

GLAZE / WASH



for which effect?

FILBERT

ROUND

FLAT

ANGLE SHADER

COMB

FAN

LINER

Look for these other fine brands of Robert Simmons Hand-Crafted Artist Brushes

Expression

Designed for Decorative Artists, with a silky smooth synthetic mix, balanced handle for less fatigue and a complete range of shapes and sizes.