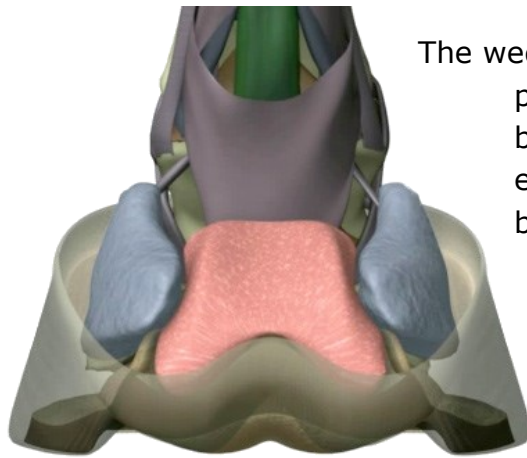




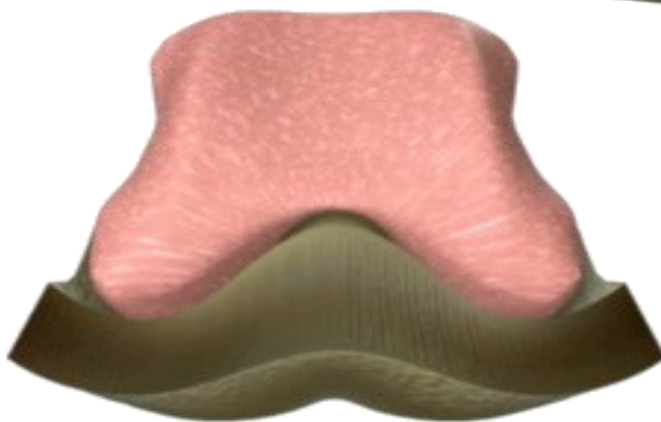
The Digital Cushion



The wedge shaped digital cushion is a complex network of fat filled collagen bound spaces that create a tough, yet elastic cushion that underlies the bones on the region of the pastern joint. It fills the whole space above (proximal to) the DDFT and navicular bone, and medial to the lateral cartilages. Along its abaxial and cranial

is continuous with the solar corium.

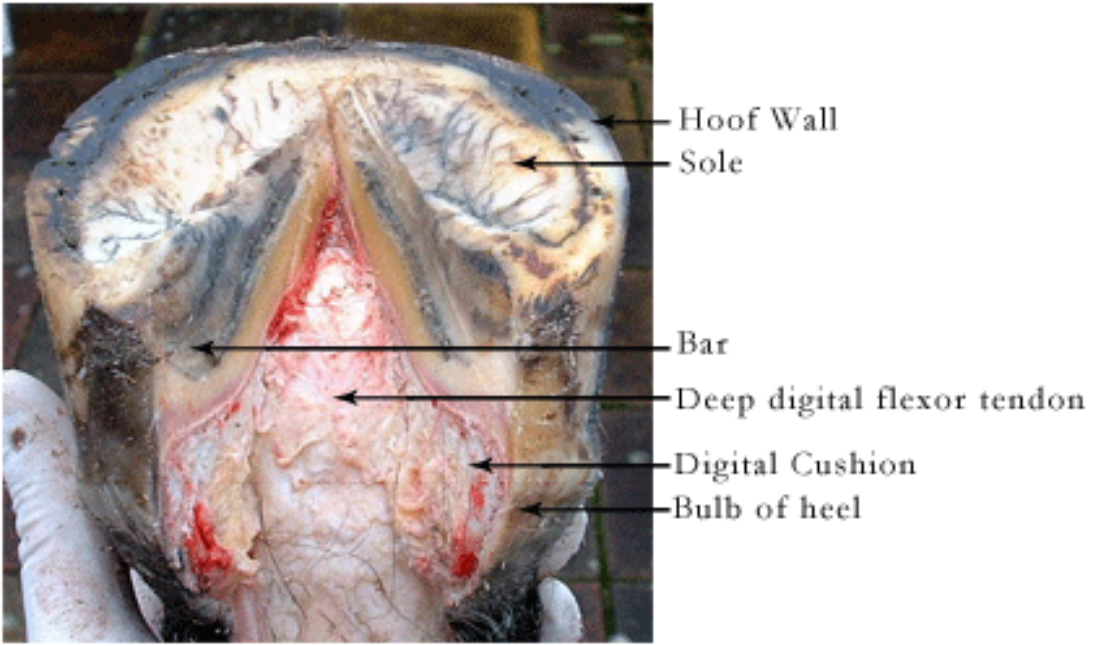
Proximal to the hoof capsule, the digital cushion lies superficially, just beneath the skin at the heel bulbs, filling the space between the skin and the DDFT in this region. The name "digital cushion" is an old one and suggests that its function has long been understood to be that of cushioning this region of the digit.



U
N
O
A
L
L
A
V
O
L
T
A
—
O
N
E
A
T
A
T
I
M
E



U
N
O
A
L
L
A
V
O
L
T
A
—
O
N
E
A
T
A
T
I
M
E



Pictures courtesy of Dr. John Stewart, Dr. Andrew Parks and HoofCareUnltd.