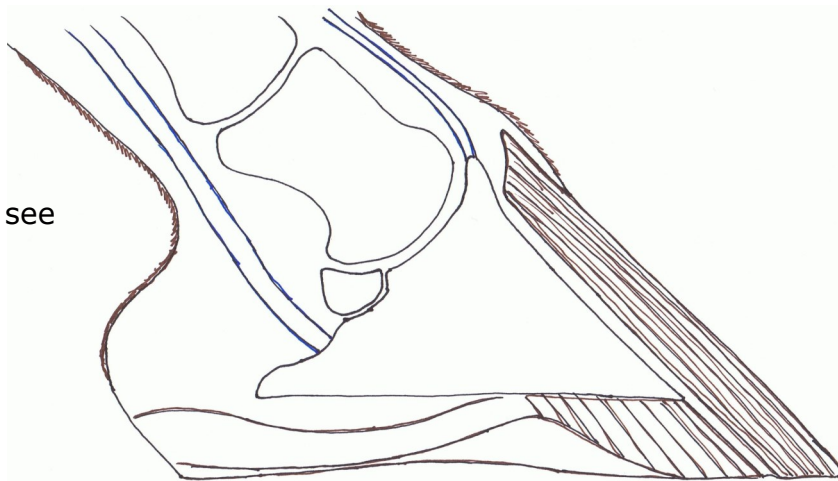




Hoof proportions (105°/95°)

Perfect hoof, can you see the angles?



U
N
O

A
L
L
A

V
O
L
T
A
—

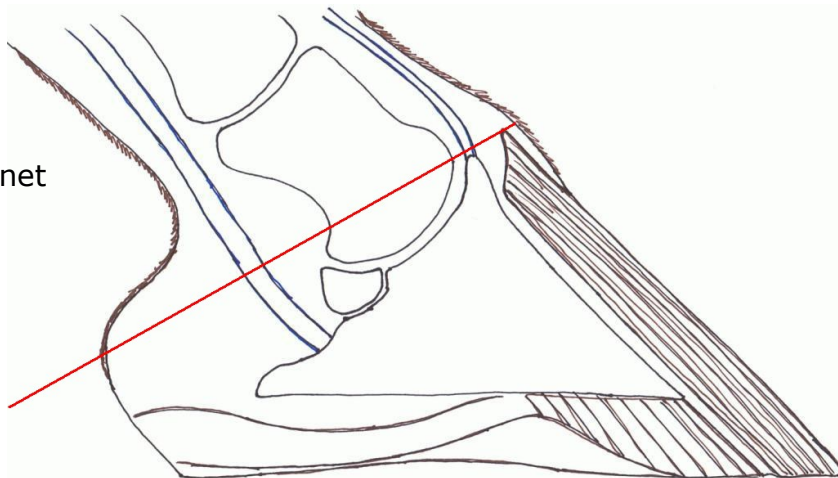
O
N
E

A
T

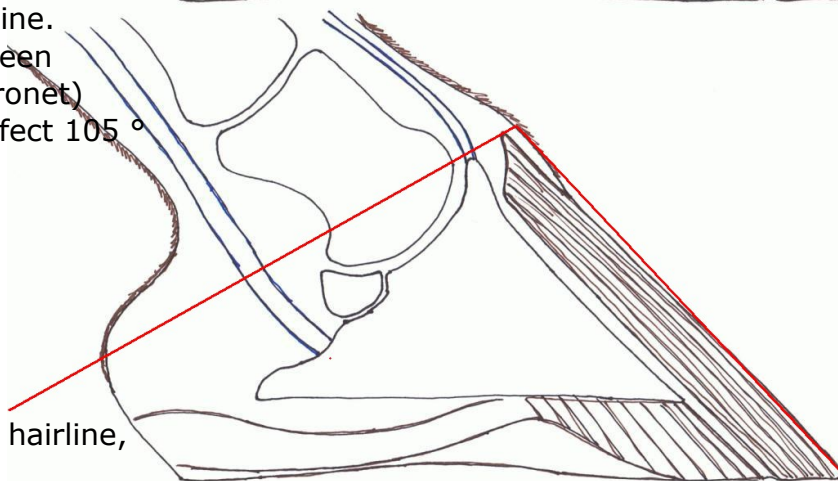
A

T
I
M
E

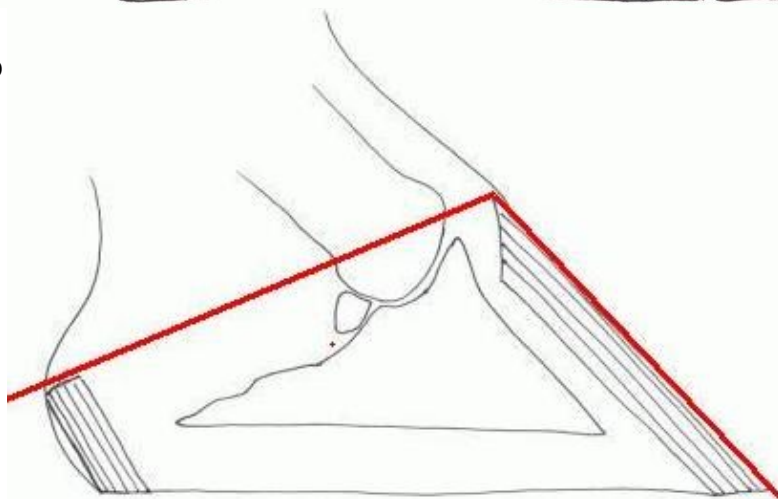
This is your 30 ° coronet



This is your 45 ° toe line.
The relationship between the two - hairline (coronet) and toe line - is a perfect 105 °

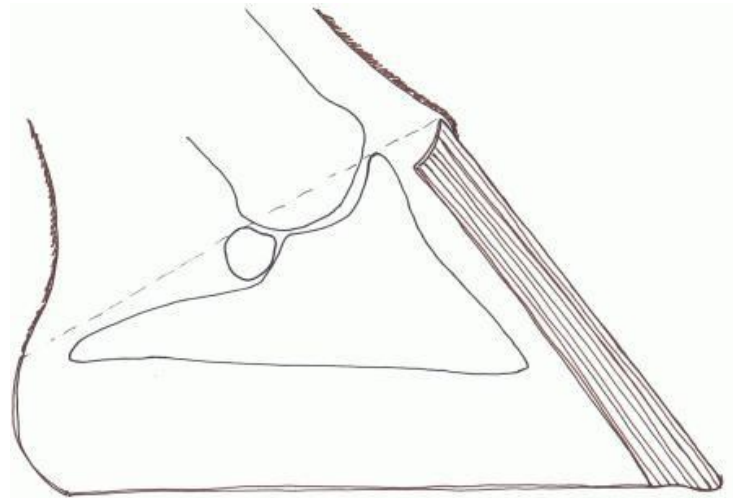


Here you have a 23 ° hairline, a 47 ° toe line and a toe-cornet relationship of 110 °, also known as an "open toe/cornet angle"

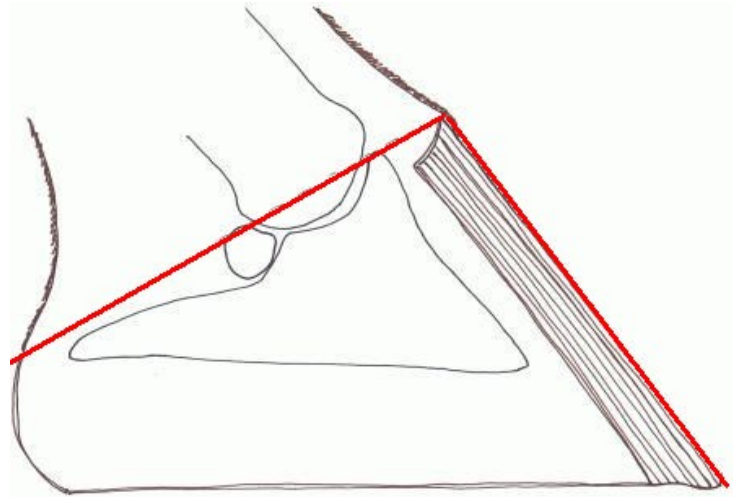




Before you look at the next picture, try to "see" what angles you have here.



30 ° hairline, 55 ° toe line, 95 ° coronet-toe relationship, a healthy hind hoof



U
N
O

A
L
L
A

V
O
L
T
A
—

O
N
E

A
T

A

T
I
M
E



Almost perfect front hoof



Can you see the angles? Make up your mind before you look at the next picture

U
N
O

A
L
L
A

V
O
L
T
A
—

O
N
E

A
T

A

T
I
M
E



A Hind Hoof 30 ° - 55 ° - 95 °



Front Hoof - 30 ° - 45 ° - 105 °



Almost perfect hind hoof





The following pictures show different hoof angles, all not quite correct. This is mainly an exercise in schooling your eye. Picture on the left is the hoof without measurements, the pictures on the right will tell you the measurements

U
N
O

A
L
L
A

V
O
L
T
A
—

O
N
E

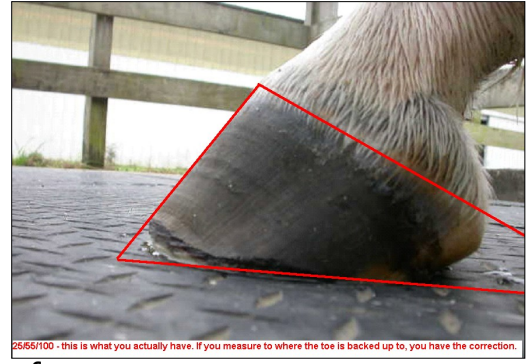
A
T

A

T
I
M
E



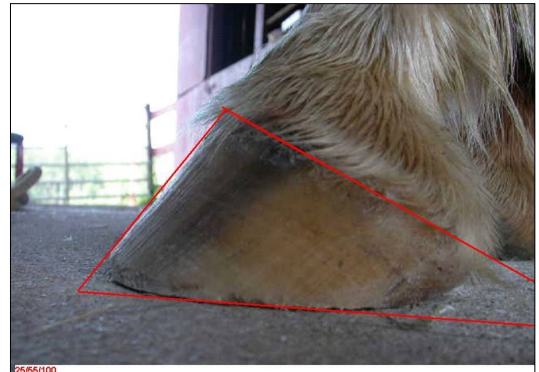
Front



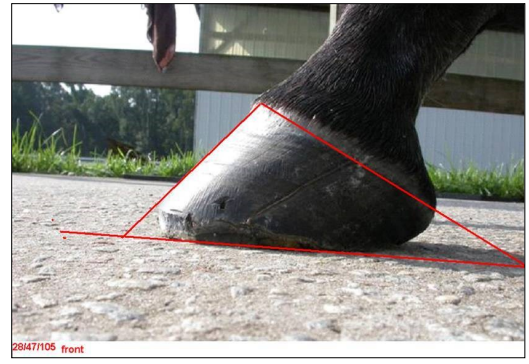
Hoof



25/55/100



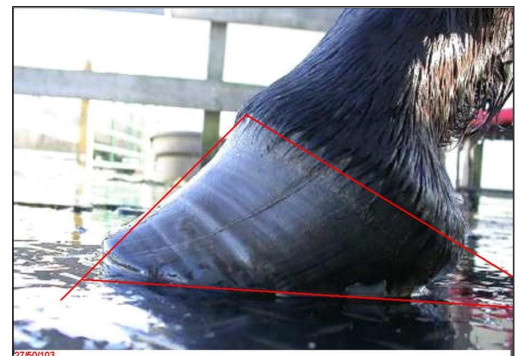
Front Hoof



25/55/100



Front Hoof



28/47/105



U
N
O

A
L
L
A

V
O
L
T
A

—

O
N
E

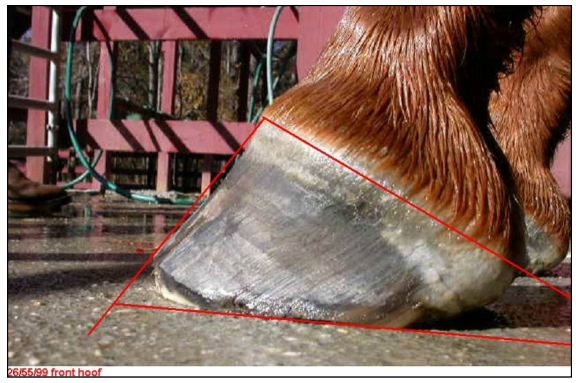
A
T

A

T
I
M
E

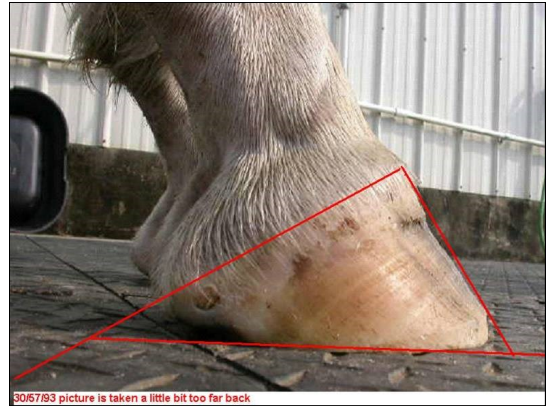


Front Hoof



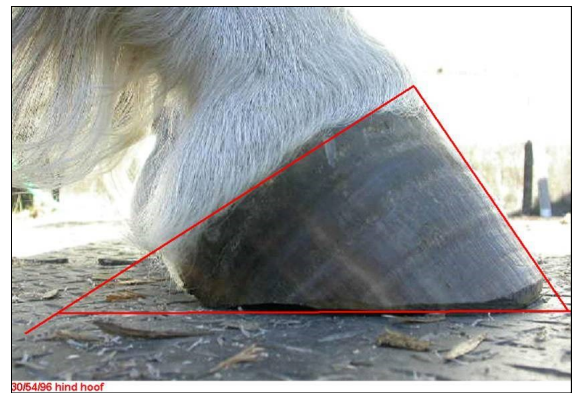
26/55/99 front hoof

26/55/99

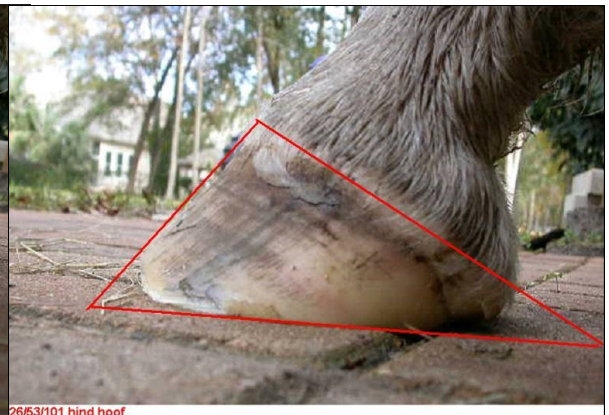


30/57/93 picture is taken a little bit too far back

Hind Hoof



30/54/96 hind hoof



26/53/101 hind hoof

30/57/93