



More about Flares

Here are a couple of scenarios of very flared hooves.

What are the options? If you leave the wall as it is in order to keep the horse from walking on the sole, you will not get a decent connection between the wall and the sole—ever. If you take the wall off, and rasp it fairly high up to connect, the horse will be walking for a while on the sole. And he will be sore. On the other hand, he is already walking on the sole as it is. A boot with a soft pad may be well advised here together with a fairly radical trim.



Rasp off everything between the blue (flared) and the red (sole) line.



Then bevel the wall fairly high up and round all the edges well.



Here's another hoof with the same problem.

U
N
O

A
L
L
A

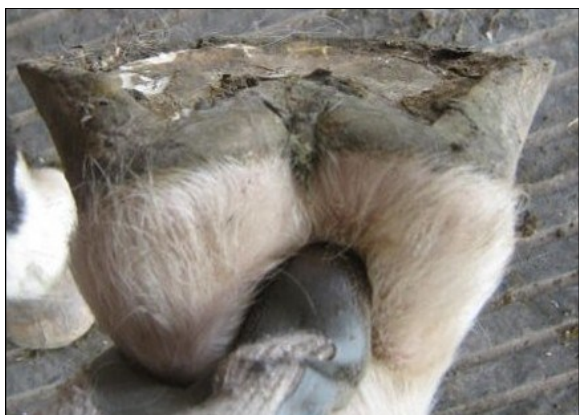
V
O
L
T
A
—

O
N
E

A
T

A

T
I
M
E



Again, this horse will be walking on the sole for a little bit and will be sore. Booting with soft pads or keeping him on a rubber floor is much advised. Without such a drastic trim, you won't be able to progress.

All pictures: Lyn Williams, NZ