

RUBBER SEAL



Size		Material	
inch	mm	Nitrile	Viton
1"	25	PHRS-101	PHRS-201
1.5"	38	PHRS-102	PHRS-202
2"	50	PHRS-103	PHRS-203
2.5"	63	PHRS-104	PHRS-204
3"	75	PHRS-105	PHRS-205
4"	100	PHRS-106	PHRS-206
6"	150	PHRS-107	PHRS-207
8"	200	PHRS-108	PHRS-208

FERRULE



Size		Material		
inch	mm	CS	SS 304	SS 316
1"	25	PHFE-101	PHFE-201	PHFE-301
1.5"	38	PHFE-102	PHFE-202	PHFE-302
2"	50	PHFE-103	PHFE-203	PHFE-303
2.5"	63	PHFE-104	PHFE-204	PHFE-304
3"	75	PHFE-105	PHFE-205	PHFE-305
4"	100	PHFE-106	PHFE-206	PHFE-306
6"	150	PHFE-107	PHFE-207	PHFE-307
8"	200	PHFE-108	PHFE-208	PHFE-308

TAIL END



Size		Material		
inch	mm	CS	SS 304	SS 316
1"	25	PHTL-101	PHTL-201	PHTL-301
1.5"	38	PHTL-102	PHTL-202	PHTL-302
2"	50	PHTL-103	PHTL-203	PHTL-303
2.5"	63	PHTL-104	PHTL-204	PHTL-304
3"	75	PHTL-105	PHTL-205	PHTL-305
4"	100	PHTL-106	PHTL-206	PHTL-306
6"	150	PHTL-107	PHTL-207	PHTL-307
8"	200	PHTL-108	PHTL-208	PHTL-308

NIPPLE BSPT



Size		Material		
inch	mm	CS	SS 304	SS 316
1"	25	PHBT-101	PHBT-201	PHBT-301
1.5"	38	PHBT-102	PHBT-202	PHBT-302
2"	50	PHBT-103	PHBT-203	PHBT-303
2.5"	63	PHBT-104	PHBT-204	PHBT-304
3"	75	PHBT-105	PHBT-205	PHBT-305
4"	100	PHBT-106	PHBT-206	PHBT-306
6"	150	PHBT-107	PHBT-207	PHBT-307
8"	200	PHBT-108	PHBT-208	PHBT-308

NIPPLE NPT



Size		Material		
inch	mm	CS	SS 304	SS 316
1"	25	PHNP-101	PHNP-201	PHNP-301
1.5"	38	PHNP-102	PHNP-202	PHNP-302
2"	50	PHNP-103	PHNP-203	PHNP-303
2.5"	63	PHNP-104	PHNP-204	PHNP-304
3"	75	PHNP-105	PHNP-205	PHNP-305
4"	100	PHNP-106	PHNP-206	PHNP-306
6"	150	PHNP-107	PHNP-207	PHNP-307
8"	200	PHNP-108	PHNP-208	PHNP-308

NIPPLE BSP



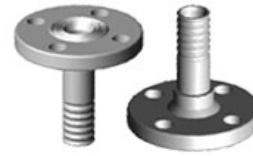
Size		Material		
inch	mm	CS	SS 304	SS 316
1"	25	PHBS-101	PHBS-201	PHBS-301
1.5"	38	PHBS-102	PHBS-202	PHBS-302
2"	50	PHBS-103	PHBS-203	PHBS-303
2.5"	63	PHBS-104	PHBS-204	PHBS-304
3"	75	PHBS-105	PHBS-205	PHBS-305
4"	100	PHBS-106	PHBS-206	PHBS-306
6"	150	PHBS-107	PHBS-207	PHBS-307
8"	200	PHBS-108	PHBS-208	PHBS-308

SWIVEL COUPLING



Size		HEXAGONAL NUT		SWIVEL NUT WITH LUG	
inch	mm	BRASS	GUN METAL	BRASS	GUN METAL
1"	25	PHSC-501	PHSC-401	PHSC-509	PHSC-409
1.5"	38	PHSC-502	PHSC-402	PHSC-510	PHSC-410
2"	50	PHSC-503	PHSC-403	PHSC-511	PHSC-411
2.5"	63	PHSC-504	PHSC-404	PHSC-512	PHSC-412
3"	75	PHSC-505	PHSC-405	PHSC-513	PHSC-413
4"	100	PHSC-506	PHSC-406	PHSC-514	PHSC-414
6"	150	PHSC-507	PHSC-407	PHSC-515	PHSC-415

FIXED FLANGE CS



Size		STANDARD			
inch	mm	ASA 150	ANSI	DIN	JIS
1"	25	PHFX-101	PHFX-111	PHFX-121	PHFX-131
1.5"	38	PHFX-102	PHFX-112	PHFX-122	PHFX-132
2"	50	PHFX-103	PHFX-113	PHFX-123	PHFX-133
2.5"	63	PHFX-104	PHFX-114	PHFX-124	PHFX-134
3"	75	PHFX-105	PHFX-115	PHFX-125	PHFX-135
4"	100	PHFX-106	PHFX-116	PHFX-126	PHFX-136
6"	150	PHFX-107	PHFX-117	PHFX-127	PHFX-137
8"	200	PHFX-108	PHFX-118	PHFX-128	PHFX-138

FIXED FLANGE SS 304



Size		STANDARD			
inch	mm	ASA 150	ANSI	DIN	JIS
1"	25	PHFX-201	PHFX-211	PHFX-221	PHFX-231
1.5"	38	PHFX-202	PHFX-212	PHFX-222	PHFX-232
2"	50	PHFX-203	PHFX-213	PHFX-223	PHFX-233
2.5"	63	PHFX-204	PHFX-214	PHFX-224	PHFX-234
3"	75	PHFX-205	PHFX-215	PHFX-225	PHFX-235
4"	100	PHFX-206	PHFX-216	PHFX-226	PHFX-236
6"	150	PHFX-207	PHFX-217	PHFX-227	PHFX-237
8"	200	PHFX-208	PHFX-218	PHFX-228	PHFX-238

FIXED FLANGE SS 316



Size		STANDARD			
inch	mm	ASA 150	ANSI	DIN	JIS
1"	25	PHFX-301	PHFX-311	PHFX-321	PHFX-331
1.5"	38	PHFX-302	PHFX-312	PHFX-322	PHFX-332
2"	50	PHFX-303	PHFX-313	PHFX-323	PHFX-333
2.5"	63	PHFX-304	PHFX-314	PHFX-324	PHFX-334
3"	75	PHFX-305	PHFX-315	PHFX-325	PHFX-335
4"	100	PHFX-306	PHFX-316	PHFX-326	PHFX-336
6"	150	PHFX-307	PHFX-317	PHFX-327	PHFX-337
8"	200	PHFX-308	PHFX-318	PHFX-328	PHFX-338

FLOATING FLANGE CS



Size		STANDARD			
inch	mm	ASA 150	ANSI	DIN	JIS
1"	25	PHFL-101	PHFL-111	PHFL-121	PHFL-131
1.5"	38	PHFL-102	PHFL-112	PHFL-122	PHFL-132
2"	50	PHFL-103	PHFL-113	PHFL-123	PHFL-133
2.5"	63	PHFL-104	PHFL-114	PHFL-124	PHFL-134
3"	75	PHFL-105	PHFL-115	PHFL-125	PHFL-135
4"	100	PHFL-106	PHFL-116	PHFL-126	PHFL-136
6"	150	PHFL-107	PHFL-117	PHFL-127	PHFL-137
8"	200	PHFL-108	PHFL-118	PHFL-128	PHFL-138

FLOATING FLANGE SS 304



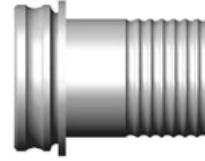
Size		STANDARD			
inch	mm	ASA 150	ANSI	DIN	JIS
1"	25	PHFL-201	PHFL-211	PHFL-221	PHFL-231
1.5"	38	PHFL-202	PHFL-212	PHFL-222	PHFL-232
2"	50	PHFL-203	PHFL-213	PHFL-223	PHFL-233
2.5"	63	PHFL-204	PHFL-214	PHFL-224	PHFL-234
3"	75	PHFL-205	PHFL-215	PHFL-225	PHFL-235
4"	100	PHFL-206	PHFL-216	PHFL-226	PHFL-236
6"	150	PHFL-207	PHFL-217	PHFL-227	PHFL-237
8"	200	PHFL-208	PHFL-218	PHFL-228	PHFL-238

FLOATING FLANGE SS 316



Size		STANDARD			
inch	mm	ASA 150	ANSI	DIN	JID
1"	25	PHFL-301	PHFL-311	PHFL-321	PHFL-331
1.5"	38	PHFL-302	PHFL-312	PHFL-322	PHFL-332
2"	50	PHFL-303	PHFL-313	PHFL-323	PHFL-333
2.5"	63	PHFL-304	PHFL-314	PHFL-324	PHFL-334
3"	75	PHFL-305	PHFL-315	PHFL-325	PHFL-335
4"	100	PHFL-306	PHFL-316	PHFL-326	PHFL-336
6"	150	PHFL-307	PHFL-317	PHFL-327	PHFL-337
8"	200	PHFL-308	PHFL-318	PHFL-328	PHFL-338

MALE CAMLOCK



Size		STANDARD			
inch	mm	AL	CS	SS304	SS316
1"	25	PHCL-601	PHCL-101	PHCL-201	PHCL-301
1.5"	38	PHCL-602	PHCL-102	PHCL-202	PHCL-302
2"	50	PHCL-603	PHCL-103	PHCL-203	PHCL-303
2.5"	63	PHCL-604	PHCL-104	PHCL-204	PHCL-304
3"	75	PHCL-605	PHCL-105	PHCL-205	PHCL-305
4"	100	PHCL-606	PHCL-106	PHCL-206	PHCL-306
6"	150	PHCL-607	PHCL-107	PHCL-207	PHCL-307
8"	200	PHCL-608	PHCL-108	PHCL-208	PHCL-308

FEMALE CAMLOCK



Size		STANDARD			
inch	mm	AL	CS	SS304	SS316
1"	25	PHCL-609	PHCL-109	PHCL-209	PHCL-309
1.5"	38	PHCL-610	PHCL-110	PHCL-210	PHCL-310
2"	50	PHCL-611	PHCL-111	PHCL-211	PHCL-311
2.5"	63	PHCL-612	PHCL-112	PHCL-212	PHCL-312
3"	75	PHCL-613	PHCL-113	PHCL-213	PHCL-313
4"	100	PHCL-614	PHCL-114	PHCL-214	PHCL-314
6"	150	PHCL-615	PHCL-115	PHCL-215	PHCL-315
8"	200	PHCL-616	PHCL-116	PHCL-216	PHCL-316