

PIONEER

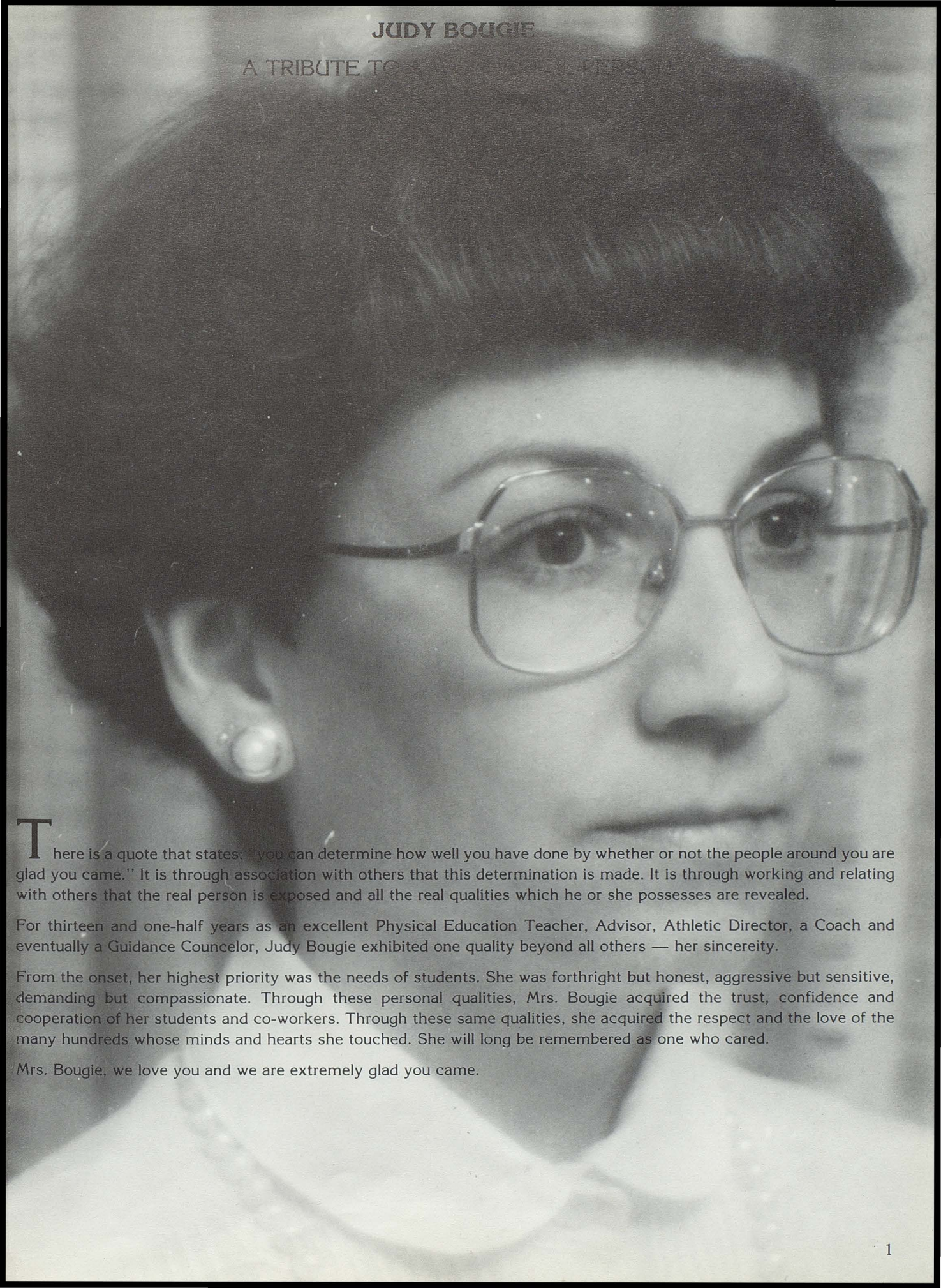






JUDY BOUGIE

A TRIBUTE TO AN OUTSTANDING PERSON



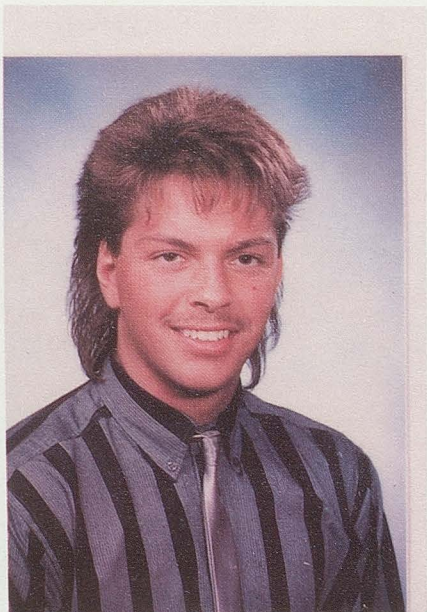
There is a quote that states: "you can determine how well you have done by whether or not the people around you are glad you came." It is through association with others that this determination is made. It is through working and relating with others that the real person is exposed and all the real qualities which he or she possesses are revealed.

For thirteen and one-half years as an excellent Physical Education Teacher, Advisor, Athletic Director, a Coach and eventually a Guidance Counselor, Judy Bougie exhibited one quality beyond all others — her sincerity.

From the onset, her highest priority was the needs of students. She was forthright but honest, aggressive but sensitive, demanding but compassionate. Through these personal qualities, Mrs. Bougie acquired the trust, confidence and cooperation of her students and co-workers. Through these same qualities, she acquired the respect and the love of the many hundreds whose minds and hearts she touched. She will long be remembered as one who cared.

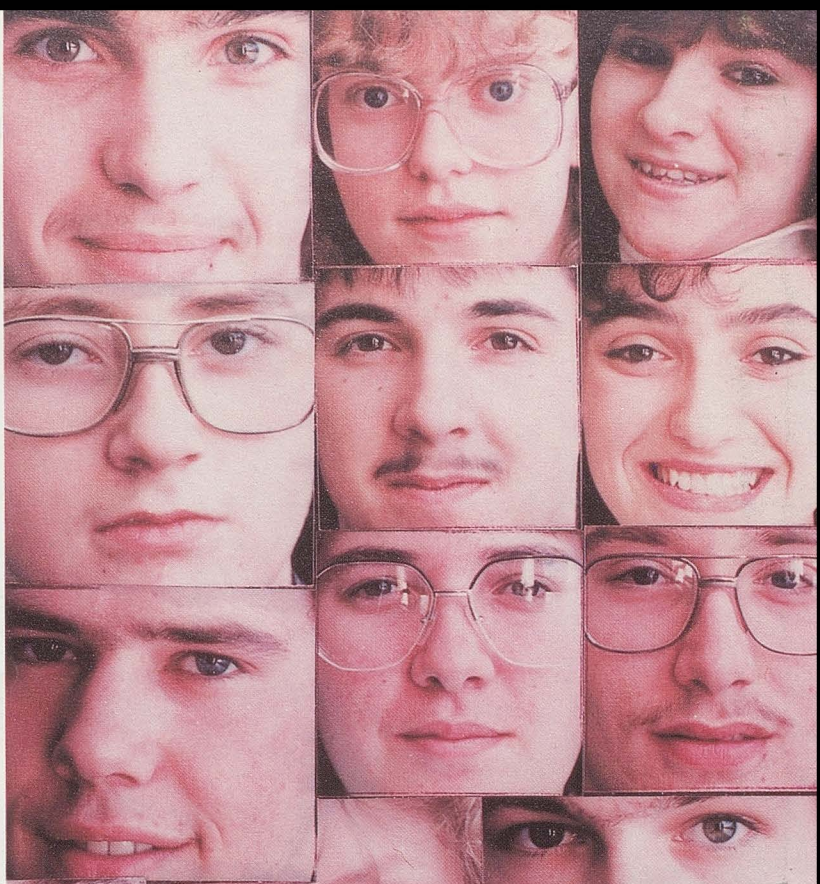
Mrs. Bougie, we love you and we are extremely glad you came.

CLASS
PRESIDENT



JIM CYR: 1-2 Volybl, 1-4 Yrbk, 3
Peer Ed, 3-4 SciClb, 1,3 Art, 2,4
Class Pres., 1 V.Pres., 3 Dance
Instructor. Career Plans:
Med.Sch.

S
E
N
I
O
R
S





SUPERLATIVES SUPERLATIVES SUPE



MOST LIKELY TO SUCCEED
Bruce Gervais, Dona Saucier



MOST DEPENDABLE
Shawn Ouellette, Nicole Corriveau, Jim Cyr



NICEST EYES
Todd Dumond, Dawn Bouchard

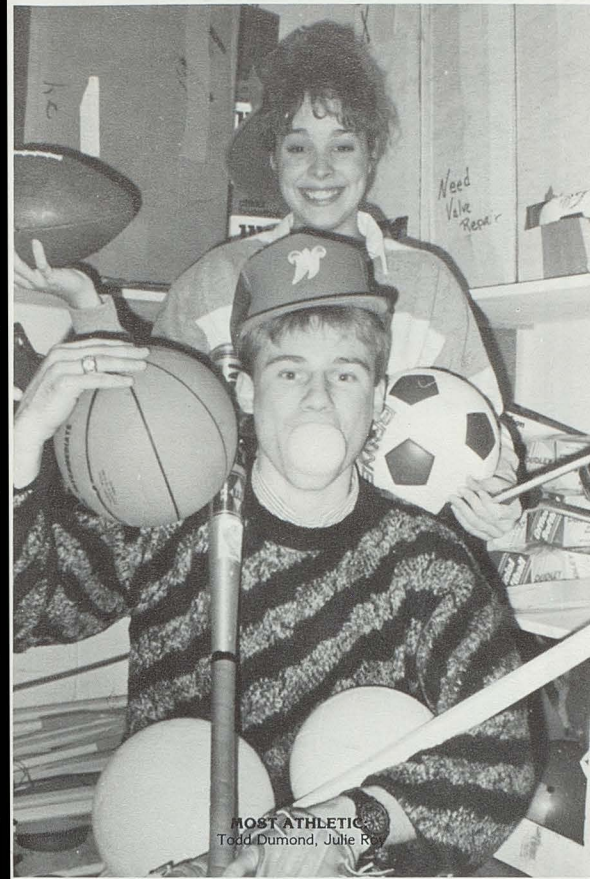


CLASS PETS
Mark Chamberland, Connie Plourde

CLASS FAVORITES: PEPSI SOCCER CHINESE FOOD



RELATIVES SUPERLATIVES SUPERLA



MOST ATHLETIC:
Todd Dumond, Julie R



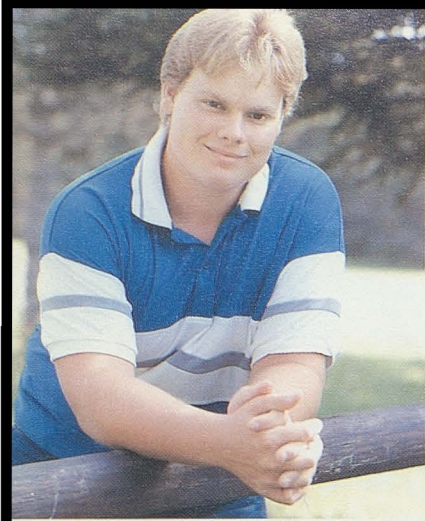
CLASS GIGGLERS:
Lynn Guimond, Jim Cyr



MOST ARTISTIC:
Scott Sinclair, Jill Edgecomb

GROUCHY SMURF BELAIR FRUITY PEBBLES SUMMER

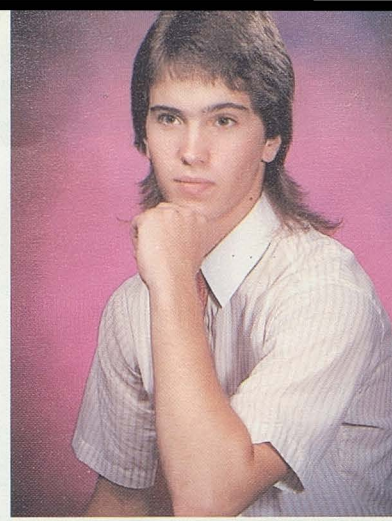




DAVID ALBERT: StuCncl 1, Bskbl 2-4, Scr 2, Vlybl 1-4, AthClb 4, CareerPln Army Av Mech.



KEITH AYOTTE: (Cam), Yrbk 3, Drama 4.



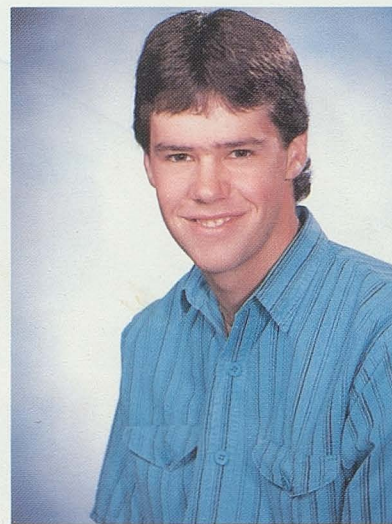
KEVIN AYOTTE: VocEd (Weld), CareerPln Welding School.



ROBIN BERNIER: (Gertie), Yrbk 4, StuGov't 2,4, StuRep 2,4, Drama 2, SADD 1-4, AthClub 4, Vlybl 4, Band 1, Chorus 4, PeerEd 3,4, ChrLdr (Mascot) 1-3, Newspaper 1-4, CareerPln SMVTI.



DAWN BOUCHARD: (Bella), Chrldr 1,2, Co-Cap 3, Peer Ed 3, Drama 3,4, NHS 3 Sec 4, Class Sec 2 VPres 3, AthClb 3 Treas 4, Prom Com 3, French Clb 1 Pres 2, Bsbl mgr 2-4, Scr mgr 3,4, Model State Legislation 2-4, CareerPln In U of New England — Occupational Therapy.



DALE BOURGOIN: (Busy Bee), CareerPln Area Work.



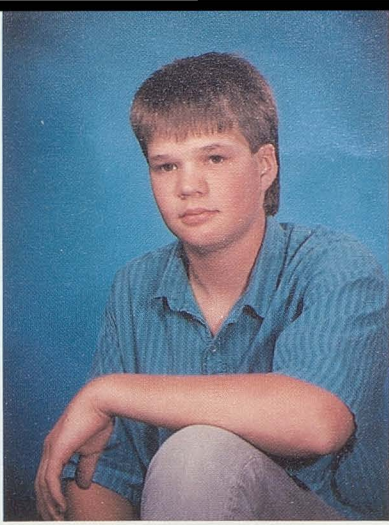
KEITH BOURGOIN: (Valaire), Scr 1-4, JV Bskbl 1,2, V Bskbl 3,4, Bsbl 3,4, AthClb 3,4, CareerPln NMVTI Accounting. 6



LIZ BOURGOIN: ChrLdr 1-3, SADD 1-3, Peer Ed 3.



LISA CHAMBERLAND: (Lis), Peer Ed 3, Scr 4, Work out of Area.



MARK CHAMBERLAND: CareerPln NMVTI — Small Computers.



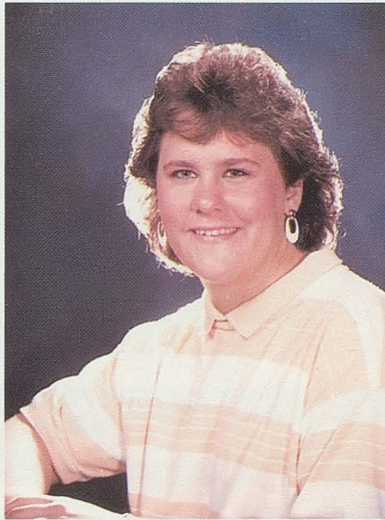
BRENDA LEE CLAVETTE: (Bren), JV Scr 1,2, JV Bskbl 1,2, CareerPln College.



CAROL CORRIVEAU: (Corriveau), CareerPln Enter work force.



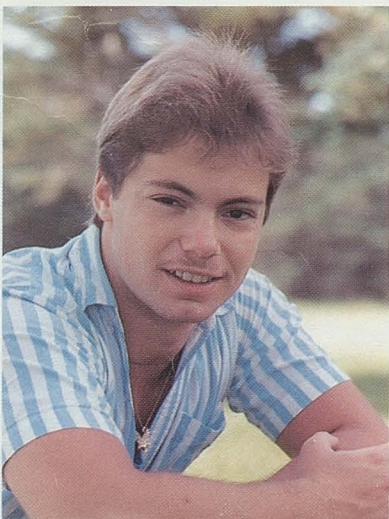
NICOLE L. CORRIVEAU: (Nic), V Scr 1-4, JV Bskbl 1, IntVlybl 1,2,4, IndrScr 3,4, V Sftbl 1-4, SADD 2, Peer Ed 3, NHS 2, Treas 3, Pres 4, AthClb 2-4, Drama 3,4, SciClb 3, Class Treas 3, CareerPln Undecided.



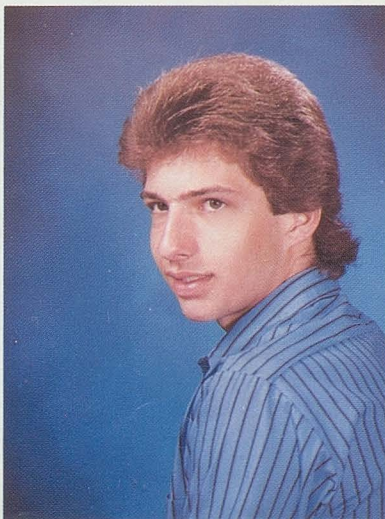
KELLY COUTURE: (Kell), Bskbl 1-3, SADD 1,2,4 Pres 3, AthClb 4, Newspaper 1, Drama 3,4, Band 2, Chorus 4, Model Legislature: House of Rep 2,3, Chaplin of House 4, SciClb 4, IndrScr 3,4, IntrVlybl 4, CareerPln SMVTI or Liberty.



SHELLY COUTURE (Shell), JV Scr 1, V Scr 2-4, SADD 2, Newspaper 2, Vlybl 4, Drama 3, AthClb 4, Track 3, Peer Ed 3-4, CareerPln HI-Fashion Beauty School.



MARK DAIGLE: (Macho Man), JV Bskbl 1,2, IntrVlybl 1-3, Bskbl 1-4, AthClb 2-4, Scr 3,4, Yrbk 3, SciClb 3, CareerPln College for Chiropractor.



RICKY DAIGLE: (Born Wild), CareerPln Work in Area.



LISE de MONTIGNY: SADD 1-4, CareerPln Veterinarian School.

SUPERLATIVES SUPERLATIVES SUPE



BEST FRIENDS
Jill Edgecomb, Julie Roy



BEST FRIENDS
Shawn Ouellette, Keith Bourgoin



BEST LOOKING
Donna Pelletier, Jon Pelletier



CLASS COMA
Karie Paradis, Tom Paradis

GUIDING LIGHT CHRISTMAS LAMBORGHINI FLORIDA



RELATIVES SUPERLATIVES SUPERLA



CLASS PERFECTIONISTS
Jill Edgecomb, Scott Lavertu



CLASS CLOWN
Jasen Thibeault, Lise de Montigny



CLASS PARTIERS
Jamie Morneault, Lisa Chamberland

TOM CRUISE ELIZABETH SHUE WISDOM SNICKERS

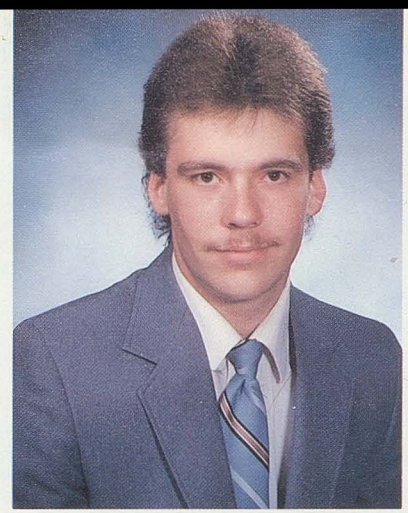




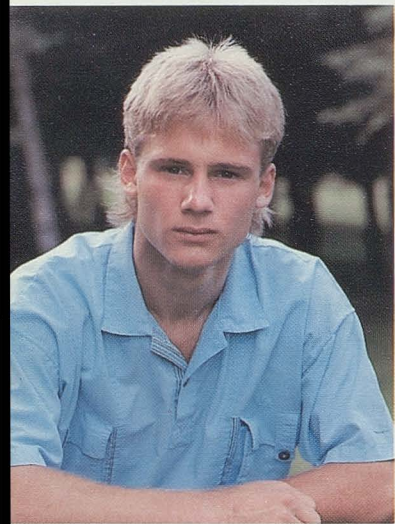
LISA ANN DESJARDIN: (Pee-Wee) Scr 1-4, Bskbl 1,2, Vlybl 3,4, Sftbl 4, IntVlybl 1-4, Peer Ed 3,4, IndScr 3,4, CareerPln Undecided.



GAYLE DUMAIS: (Paula) Bskbl 1, Vlybl 1,2, Drama 4, Model Legislature 2,3, Class Officer Sec 4, SciClb 3, SADD 2,3, CareerPln nursing/health.



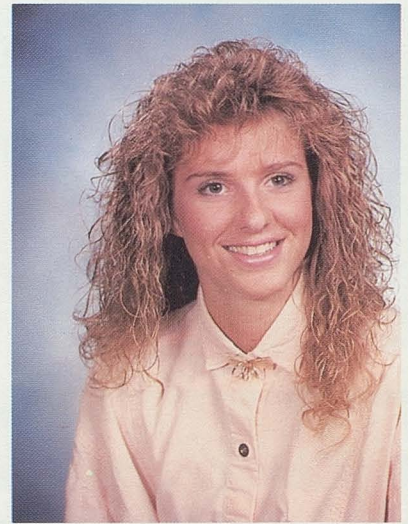
MARK DUMOND:



TODD DUMOND: Yrbk 3, SciClb 3, Boy's State 3, V Scr 2-4, V Vlybl 2-4, V Bsbl 1-4, AthClb 2-4, CareerPln College.



JILL EDGEComb: Class Pres 1, NHS 2-4, Peer Ed 3,4, AthClb 2,3, V Pres 4, SADD 1,2, V Pres 3,4, Yrbk co-editor 4, SciClb 3, Prom Comm. (Co-Chr) 3, Grad. Comm. 4, Career Pln UM., V Scr (Cap) 1-4, V Bskbl (Cap) 1-4, V Vlybl 1-4, V Softbl (Cap) 1-4, Intr Vlybl 1-4.



LETA FONGEMIE: V Scr 1-4, V Sftbl 1-4, V Vlybl 2-4, IntrVlybl 1-4, V Bskbl 4, V Bskbl Mgr 3, Drama 3,4, SciClb 3, Peer Ed 3, NHS 3,4, Class Rep 1,2, Rep at Large 3, IndrScr 3,4, AthClb 3,4, CareerPln go into education.



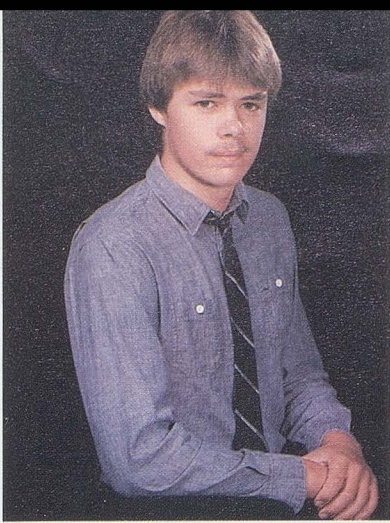
KIMBERLY ANN GAGNON (Kimi) ChrLdr 3, CareerPln College for accounting.



BRUCE GERVAIS Bsbl 2-4, Bskbl 3,4, Vlybl 3,4, AthClb 3,4, Yrbk Photographer 4, CareerPln UMPI for accounting.



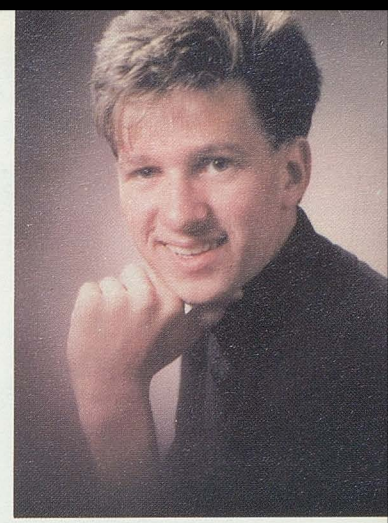
KENT GUERRETTE Yrbk 1,2, CareerPln forestry.



PHILIP GUERRETTE: (Grady) Class Treas 1, JV Bskbl 1,2, Scr 1,2, V Bskbl 3,4, CrPln Army.



LYNN GUIMOND: Yrbk 1,2, Newspaper 4.



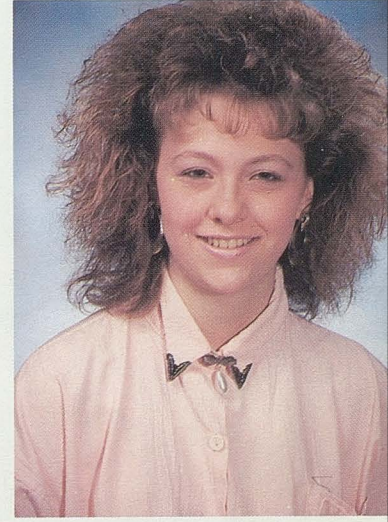
SCOTT LAVERTU: JV Bskbl 1, V Bskbl Mgr 2, Vlybl Mgr 1,2, V Vlybl 3,4, Scr Mgr 2, V Scr 3,4, Bsbl Mgr 2-4, Senior Rep 4, AthClb 3 V Pres 4, NHS 3 Treas 4, Band 1-3, SciClb 3, Yrbk 3, Drama 1-4, Boys State 3, Model State 3, CareerPln College.



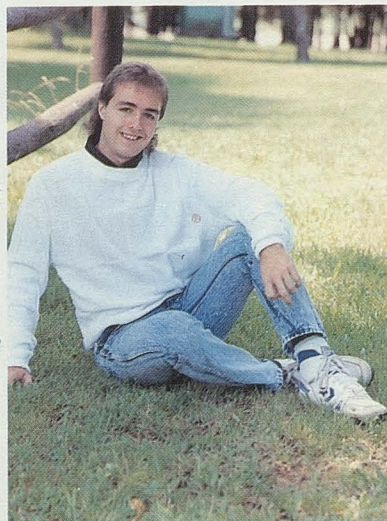
CINDY LAVOIE: (Cin) Bskbl Mgr 2-4, Yrbk 2, AthClb 4, CareerPln NMVTI for computer programming.



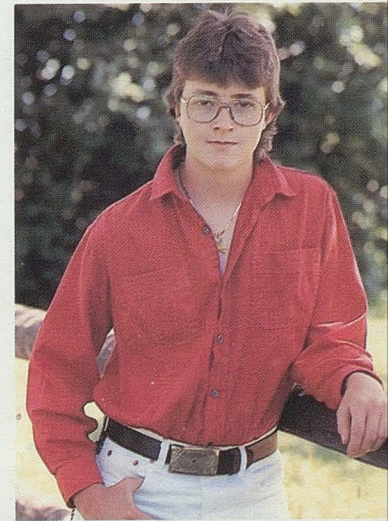
JENNY MICHAUD: (Jen) Model State 1-3, Drama 3,4, StuCncl 1-3, Yrbk 3, Vlybl 1-4, PeerEd 1-4, Bsbl Mgr 3,4, CareerPln College for business management.



KARIE MICHAUD: ChrLdr Mgr 1, ChrLdr 2,3, Bsbl Mgr 1-4, Scr Mgr 3, Bsbl Mgr 3, AthClb 3,4, PeerEd 3, CareerPln college for business administration.



JASON MORNEAU: (Beate) V Scr 3,4, JV Bskbl 1, V Bskbl 1,2, Capt 3,4, V Vlybl 1,2, Capt 3,4, AthClb 3,4, SciClb 3, Yrbk 3, Boy's State 3, CtuCncl Sec 4, Class Sec 3, All-County Scr 4, NHS 4, Jr High Boys Asst Bskbl Coach 3,4, CareerPln College: Physical Education.



BRUCE OUELLETTE CareerPln work in area.

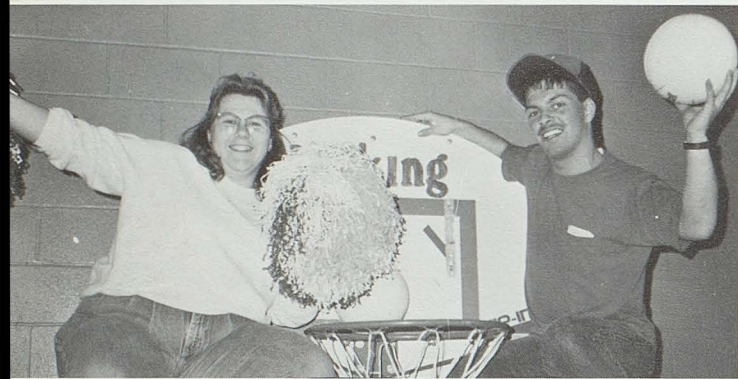
SUPERLATIVES SUPERLATIVES SUPE



NICEST SMILE:
Jenny Michaud and Shawn Ouellette



CLASS FLIRTS:
Tom Paradis and Kim Warner



MOST SCHOOL SPIRIT:
Jim Cyr and Dona Saucier



CLASS THESPIANS:
Scott Lavertu and Dona Saucier

ROUND POINT BLUE EDDIE MURPHY GARFIELD ALF



RELATIVES SUPERLATIVES SUPERLA



BEST PERSONALITY:
Keith Ayotte, Dawn Bouchard



CLASS COUPLE:
Jenney Michaud, Bruce Gervais



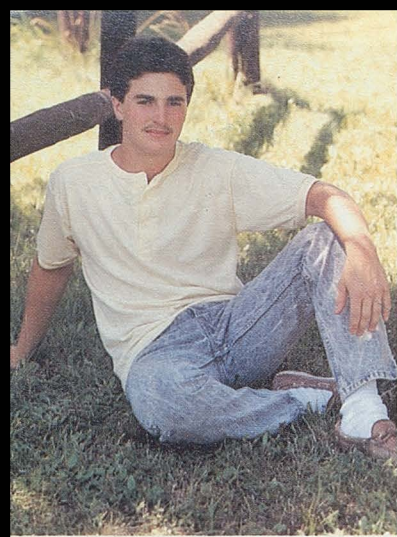
BEST DRESSED:
Jon Pelletier, Liz Bourgoin



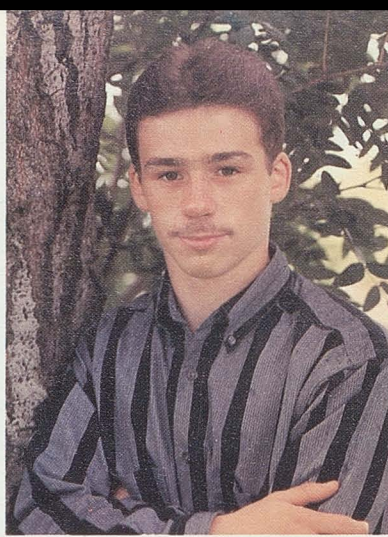
MOST TALKATIVE:
Jamie Morneault, Kim St. George

SAMANTHA FOX BON JOVI MIKE TYSON SENIORS 1989





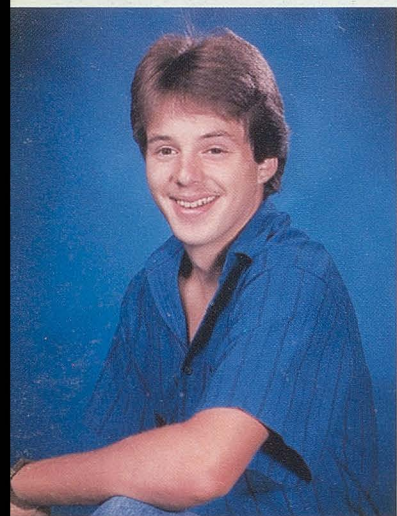
SHAWN OUELLETTE: (Spudd) V Scr 1-4, Bskbl JV 1,2 V 3,4, V Vlybl 1,3,4, V Bsbl 3,4, StuCncl Treas 4, Yrbk 3, AthClb 2-4, SciClb 3, CareerPln College.



STEVE OUELLETTE: (Herk) V Scr 1, V Bsbl 3,4, V Vlybl 3,4, Drama 2-4, Class Treas 4, Peer Ed 3,4, SciClb 3, CareerPln Army.



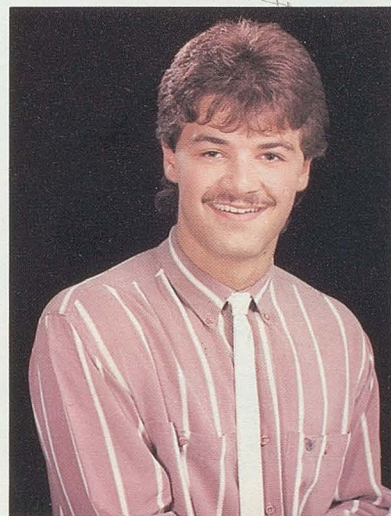
KARIE PARADIS: StuCncl Rep 1-3 V Pres 4, Regional Student Council Secretary 2, Yrbk 3, Prom Comm 3, NHS, CareerPln College for an accountant.



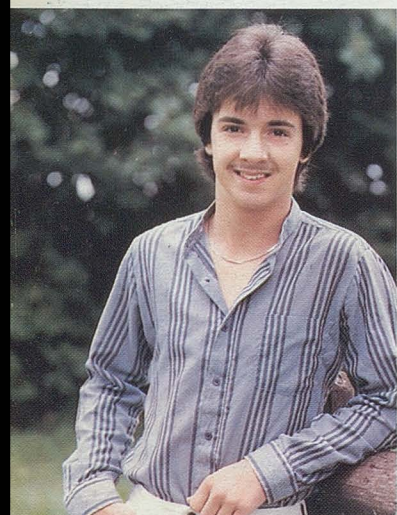
TOM PARADIS: Yrbk 3, SciClb 3, Vlybl 3, CareerPln College.



DONNA L. PELLETIER: (Don) Rep at Large 1, Chldr 1, Vlybl 1-4, Drama 2, Class V Pres 2,3, SciClb 3, NHS, Class Pres 4, CareerPln NMVTI medical secretary.



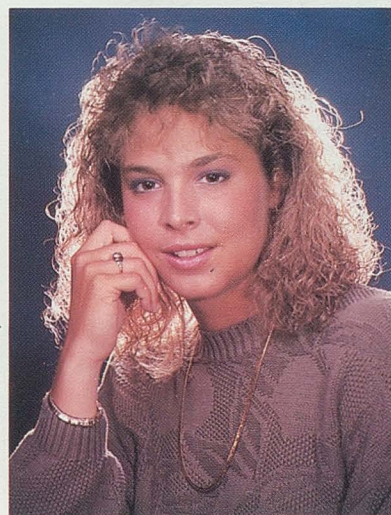
JON PELLETIER: Ath Clb 3, 4, Soccer 4, Vlybl 2-4, Intr Vlybl 2-4, Bsbl 1-4.



DALE PICARD: JV Bskbl 2, V Bskbl 3, CareerPln school for an electrician.



CONNIE PLOURDE: (Con) JV Scr 1-3, V Scr 4, Newspaper 2-4, Sftbl 1-4, Vlybl 4, Yrbk 2, AthClb 4, StuCncl Rep 4, CareerPln Air Force.



JULIE ROY: V Ser (Cap) 1-4. V Bskbl (Cap) 1-4, V Sftbl (Cap) 1-4, SciClub 3, Peer Ed 3, NHS 3, 4, Class Rep 3, Ath Club 3-4, Prom Comm 3, Yrbk (Co-editor) 4, International Club 2, Career Pln College.



DONA SAUCIER: Scr mgr 2-4, Bskbl mgr 2-4, Vlybl mgr 2-4, Sftbl mgr 3,4, Band 1,2, Pep Band 2, Drama Pres 3,4, Art Club 2, SciClb 3, NHS 3, V Pres 4, AthClb 3, Sec 4, Model State 2-4, Girls State Delegate 3, Class Officer V Pres 4, Peer Ed 3,4, CareerPln College.



SCOTT SINCLAIR: (Scitz) V Scr 1-4, Bsbl 3,4, Hockey 1-4, CareerPln Welding Technology.



KIM ST. GEORGE: (Kimber) FrClb 1, Bskbl mgr 2-4, Yrbk 2, Drama 3,4, Newspaper 3,4, Prom Comm 3, CareerPln NMVTI, Secretarial.



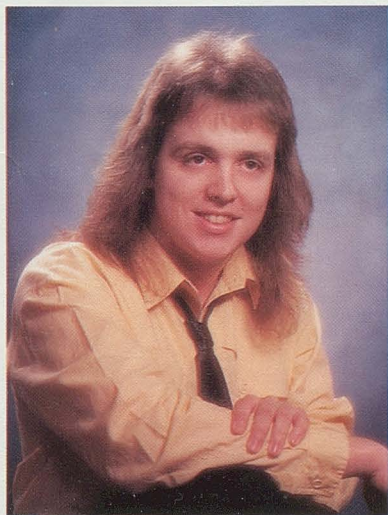
JANICE ST. PETER: CareerPln work as a CNA.



MIRIAM TALBOT: Drama 1-4, Vlybl 1-4, Track 1-4, Band 2-4, AthClb 2-4, Pep Band 2,4, NHS 3,4, Model State 3,4, Scr 3,4, SciClb 3, Bskbl 2, Girls State 3, Wyo State Science Fair 1, Maine State Science Fair 4, CareerPln College.



APRIL TARDIFF: (Angel Buns) Newspaper 3, ChrLdr 1, SciClb 1, AthClb 1, Bskbl mgr 3, CareerPln Law Enforcement at SMVTI.



JASEN THIBEAULT



KIMBERLY LYNN WARNER: (Kimi)(TT) StuCncl 2, Homeroom Rep 4, Sftbl 3,4, ChrLdr 1,3, Boy's Scr mgr 4, Drama 1,3, Yrbk 3,4, IntVlybl 3,4, Prom Comm 3, AthClb 4, Graduation Comm 4, CareerPln Airlines School in Florida.



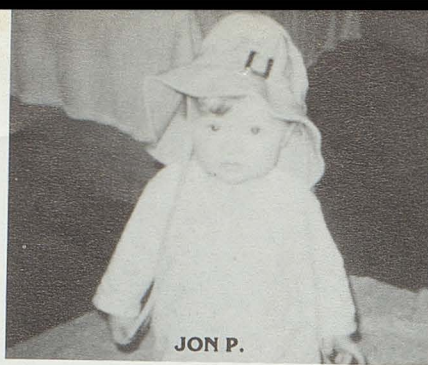
ROBIN WRISLEY: (Stressed) NHS 3,4, SADD 1 V Pres 2 Treas 3, ClOff V Pres 1, Treas 2, Pres 3, Drama 2-4, SciClb 3, AthClb 2,3, Pres 4, Scr (Cap) 3,4, Bskbl (Cap) 1-4, Vlybl 1-4, Sftbl 1-4, Model State 2-4, FrClb Treas 2, Prom Comm 3, Peer Ed 3, Graduation Comm Mass Chairperson 4, Hugh O'Brian Leadership Conference 2, CareerPln Communications.



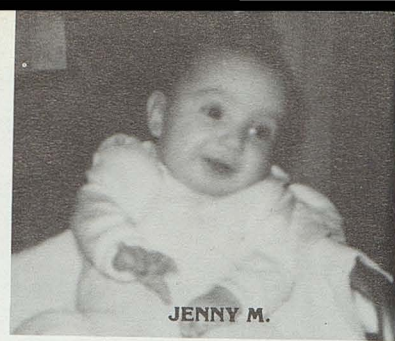
KELLY C.



SCOTT L.



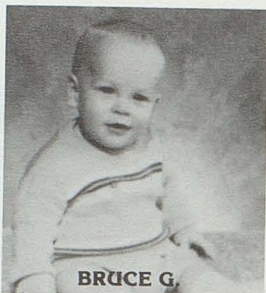
JON P.



JENNY M.



JILL E.



BRUCE G.



KIM G.



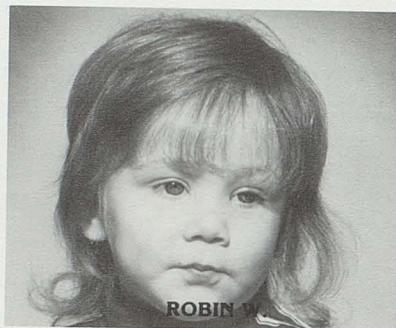
MIRIAM T.



APRIL T.



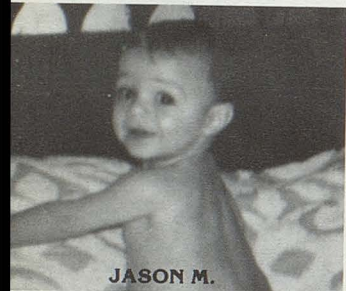
ROBIN W.



KEVIN A.



KEVIN A.



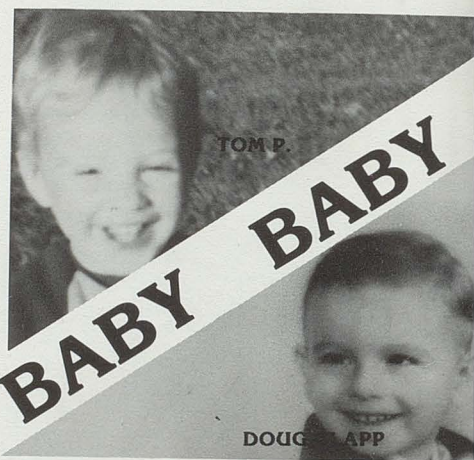
JASON M.



BRENDA C.



SHELLY C.



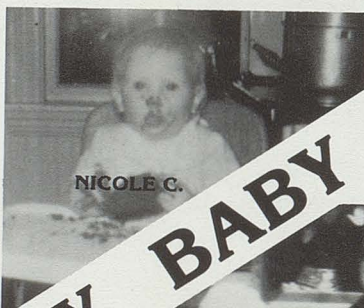
TOM P.



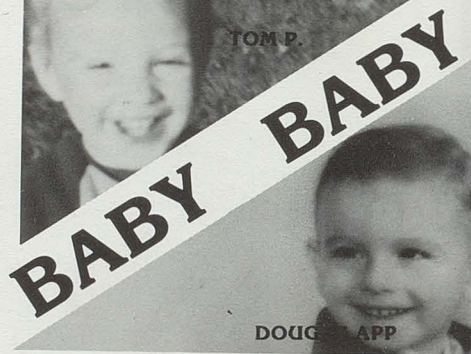
SHAWN O.



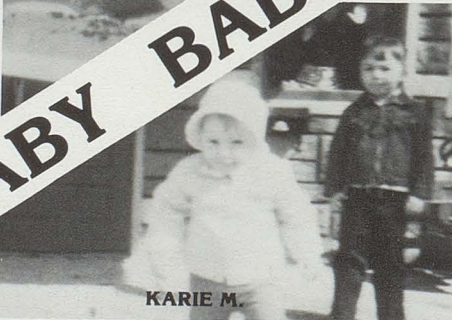
GAYLE D.



NICOLE C.



DOUG APP



KARIE M.



KEITH A.



MARK D.



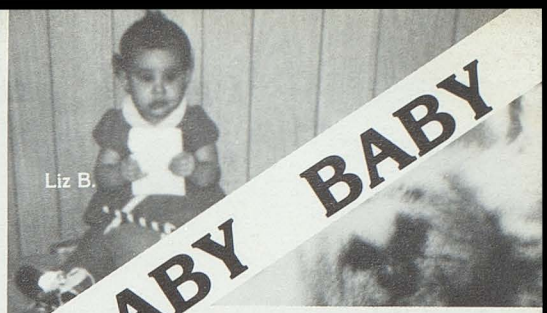
BABY BABY BABY BABY BABY



erman



Shelly and Kelly



Liz B.

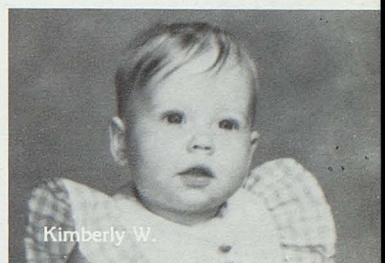
BABY BABY BABY



Scott S.



Karie P.



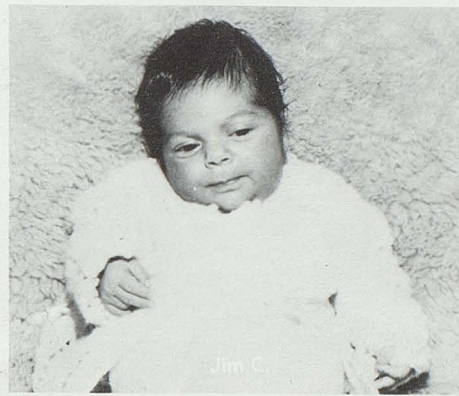
Kimberly W.



Lise de M.



Kent G.



Jim C.



Keigh B.



Lynn Gu.



Jason Th.



Donna P.



Dona S.



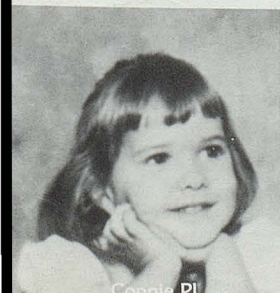
Robin B.



Jon P. and Jason M.



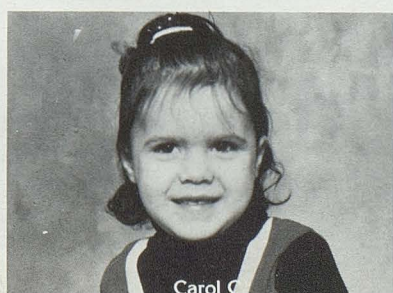
Kim St.



Connie Pl.



Dana F.

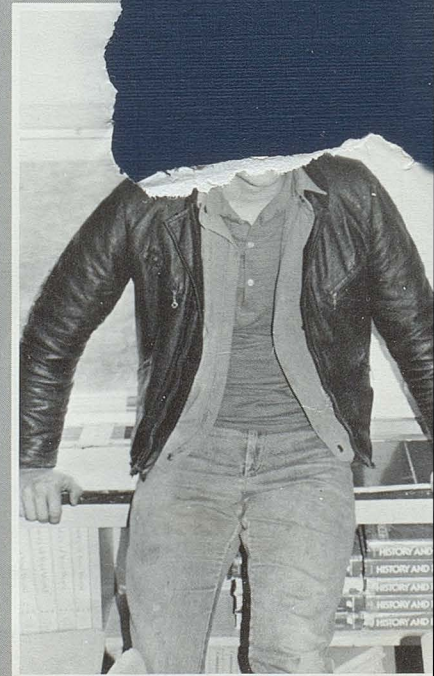
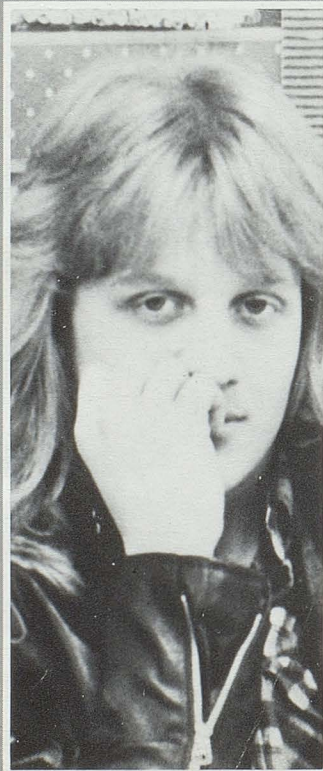
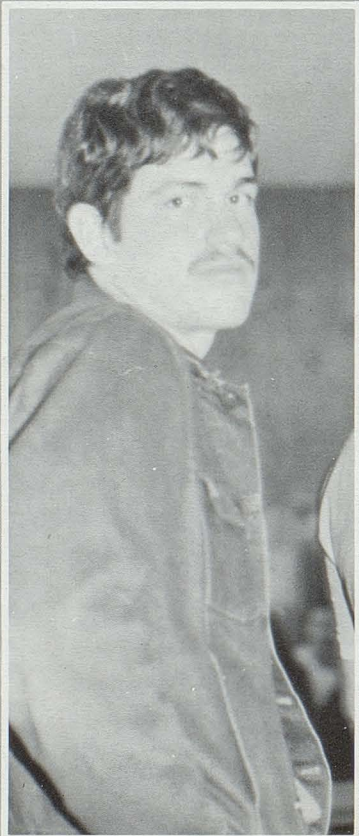
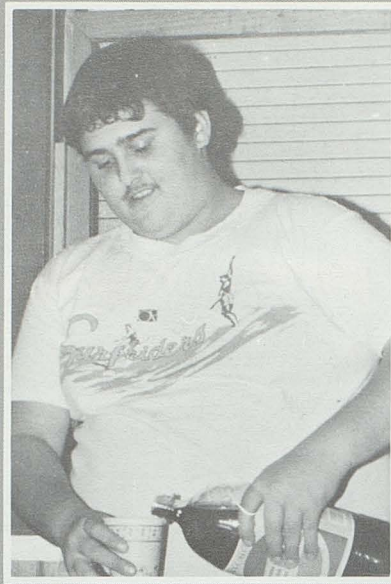


Carol C.



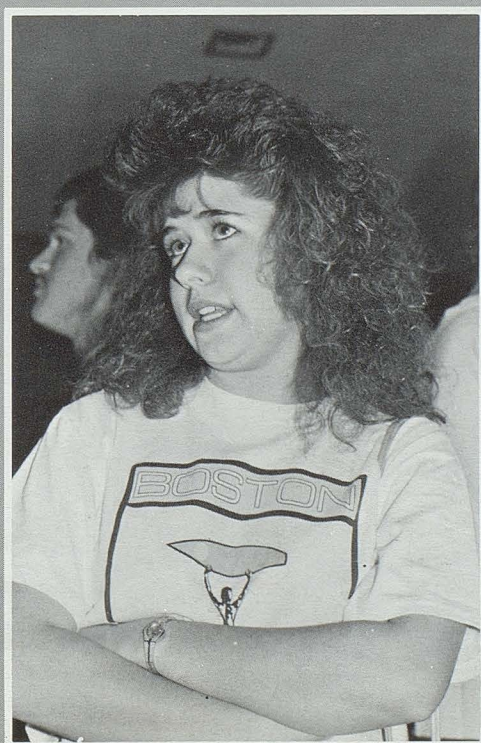
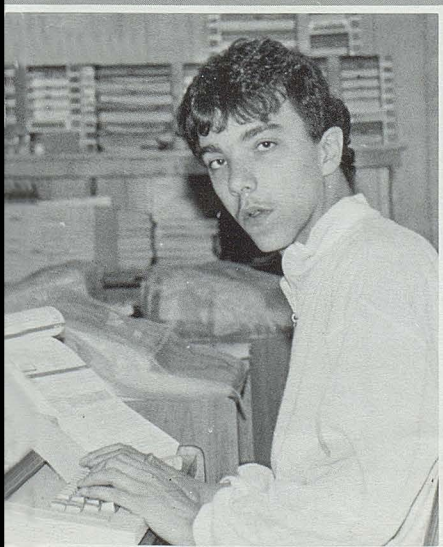
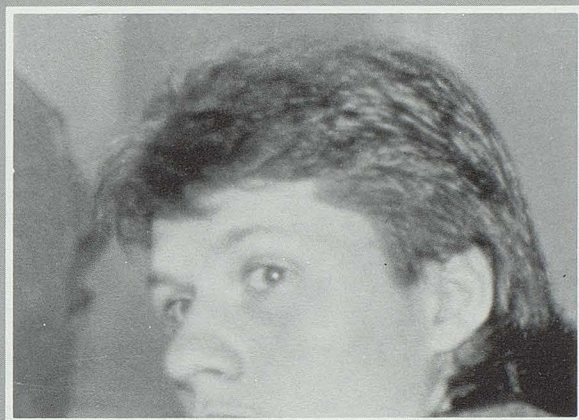
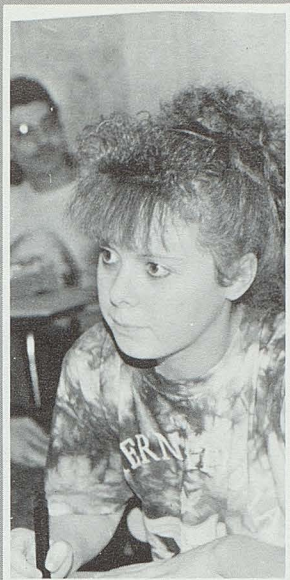
Lisa F.

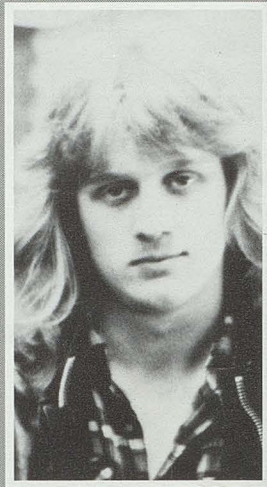
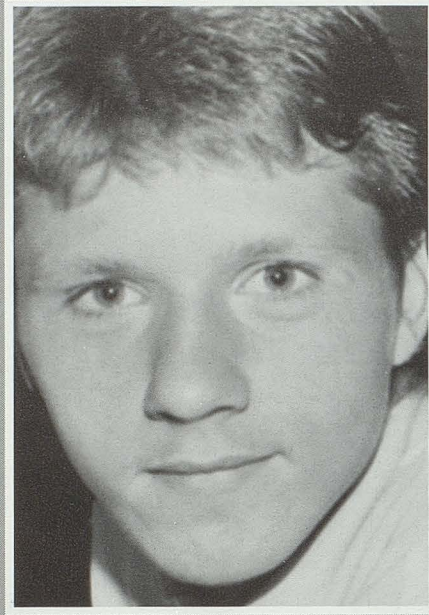
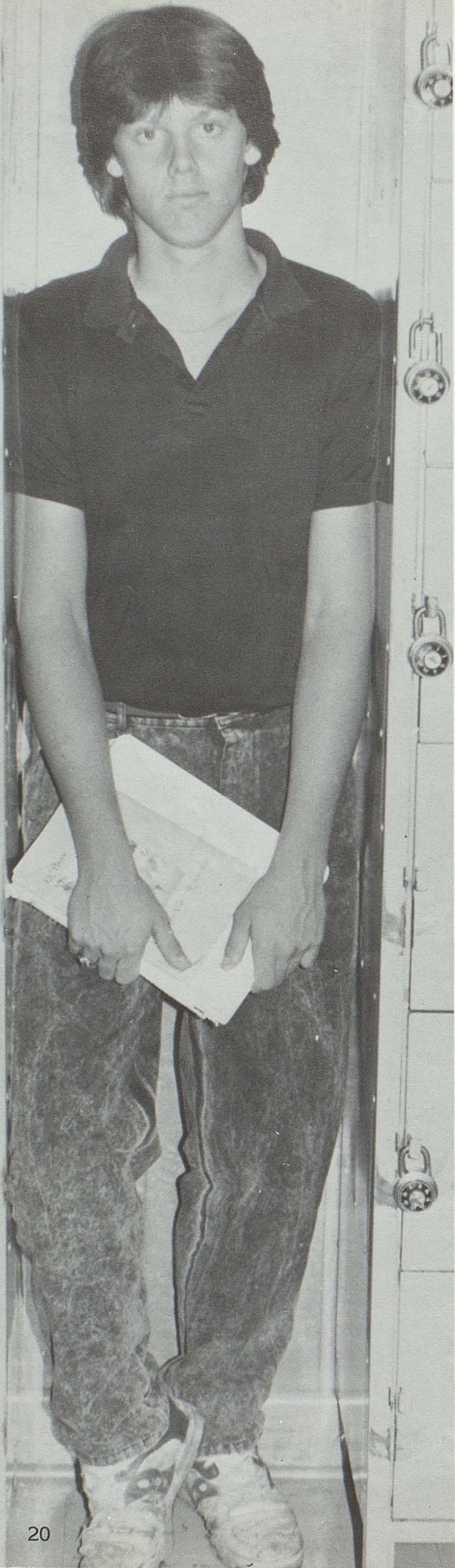
J
U
N
I
O
R
S

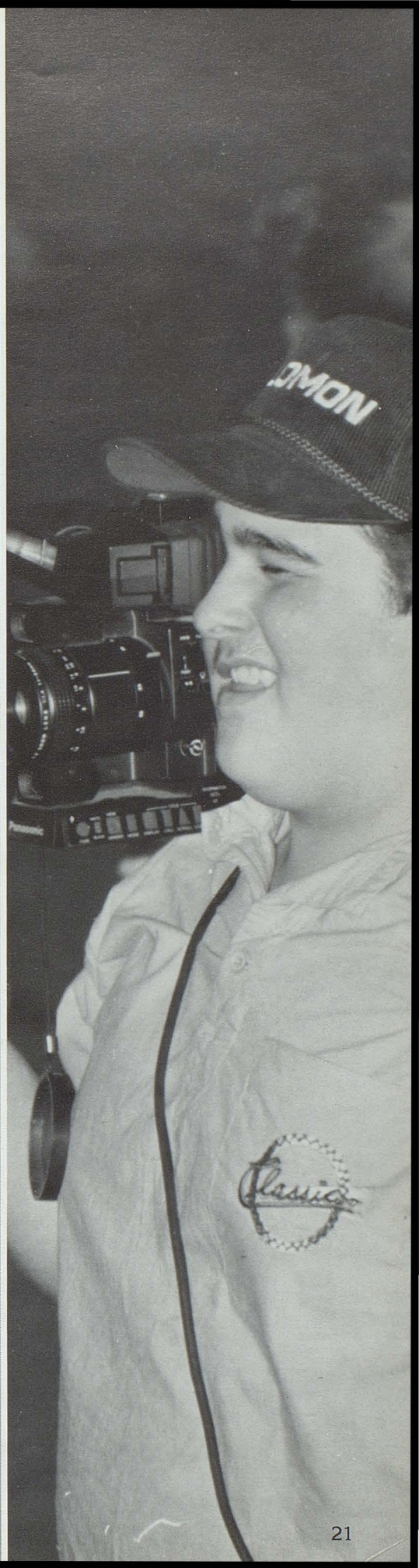
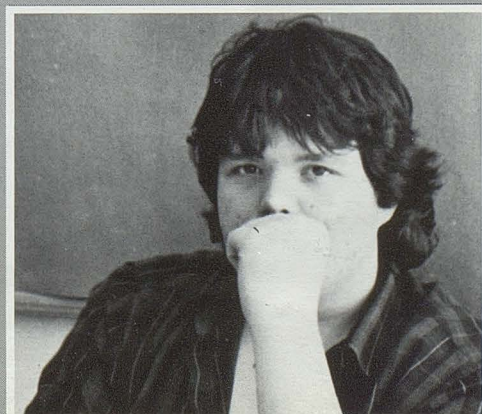
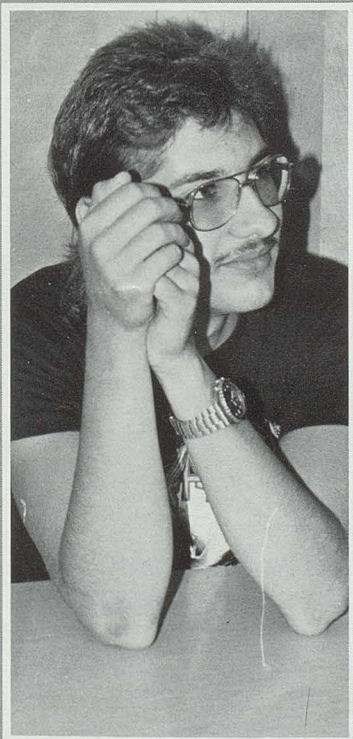
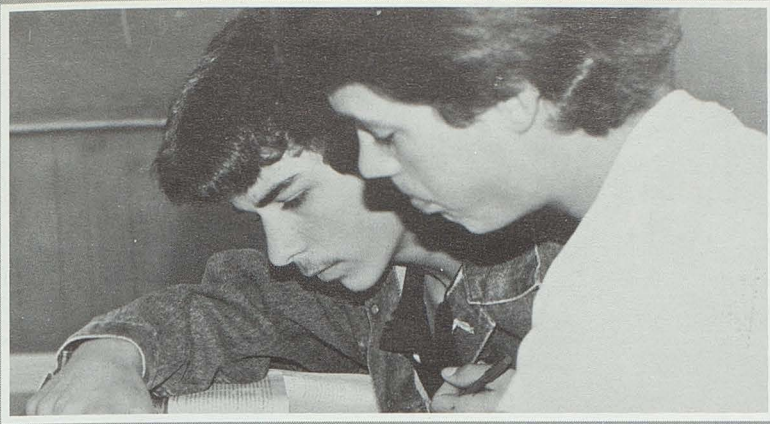


WISDOM HIGH SCHOOL CLASS OF 1990

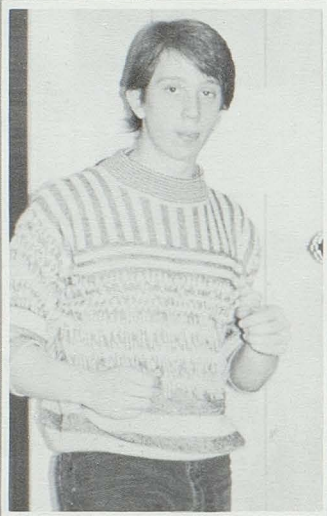
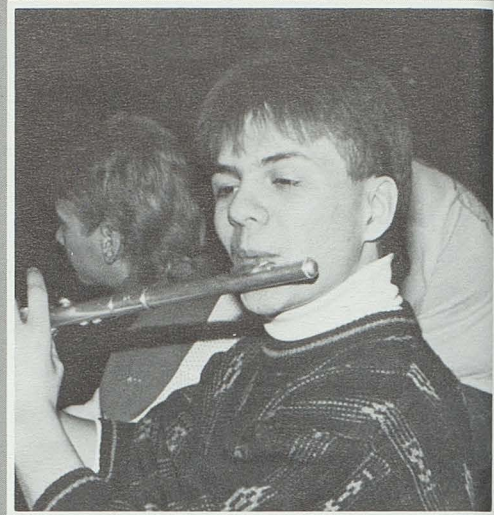
BANVILLE, JASON I.
 BEAULIEU, TINA D.
 BOSSE, TINA A.
 CARON, MATHEW J.
 CHAMBERLAND, GARY G.
 CHAMBERLAND, TINA M.
 CORRIVEAU, JAMES P.
 CYR, VICKY M.
 DUGAL, JAMES J.
 DUMAIS, RICKY
 FELTON, ALLAN J.
 FELTON, ROGER L.
 GAGNON, PEGGY A.
 GAGNON, VICKY L.
 GUERRETTE, JAURA E.
 LEVESQUE, BECKY L.
 LEVESQUE, LARRY
 MARQUIS, SUSAN A.
 MARTIN, TAMMY L.
 MATHIEU, JOHN P.
 MCQUARRIE, ANDREW N.
 MICHAUD, DENNIS P.
 MICHAUD, KELLY C.
 MICHAUD, KIM K.
 MICHAUD, MYRA L.
 MORNEAULT, JASON L.
 MORNEAULT, KIM L.
 MORNEAULT, SHAWN R.
 MOSHIER, MARTIN E.
 PICARD, GARY M.
 ROSSIGNOL, LUC M.
 SIROIS, SANDY
 THIBEAULT, APRIL L.
 THIBEAULT, JAMIE R.



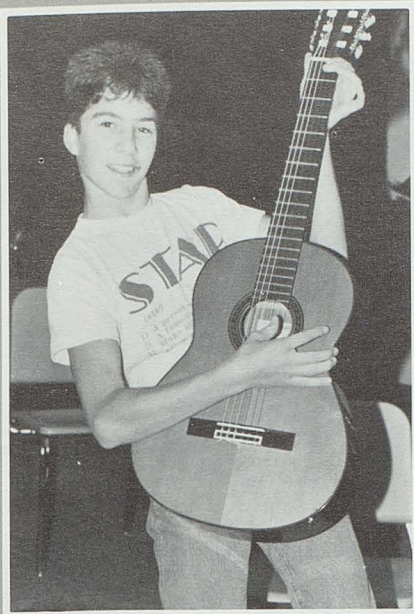




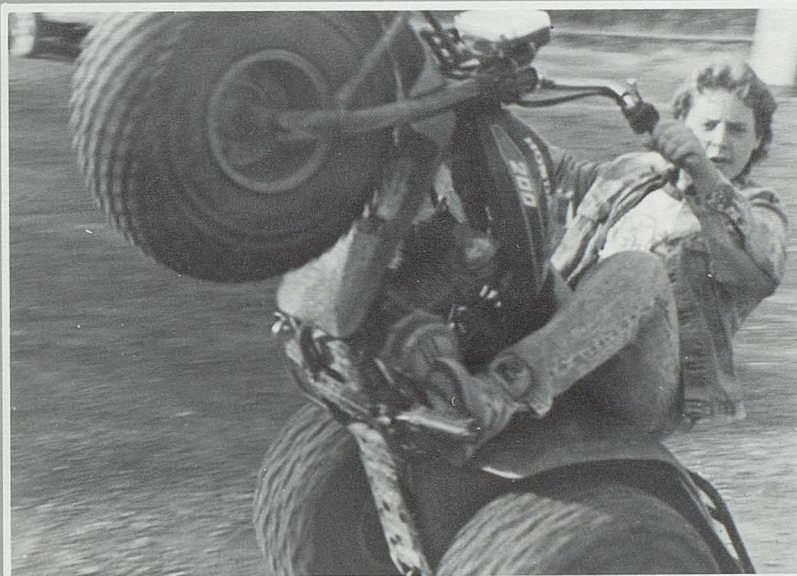
SOPHOMORES

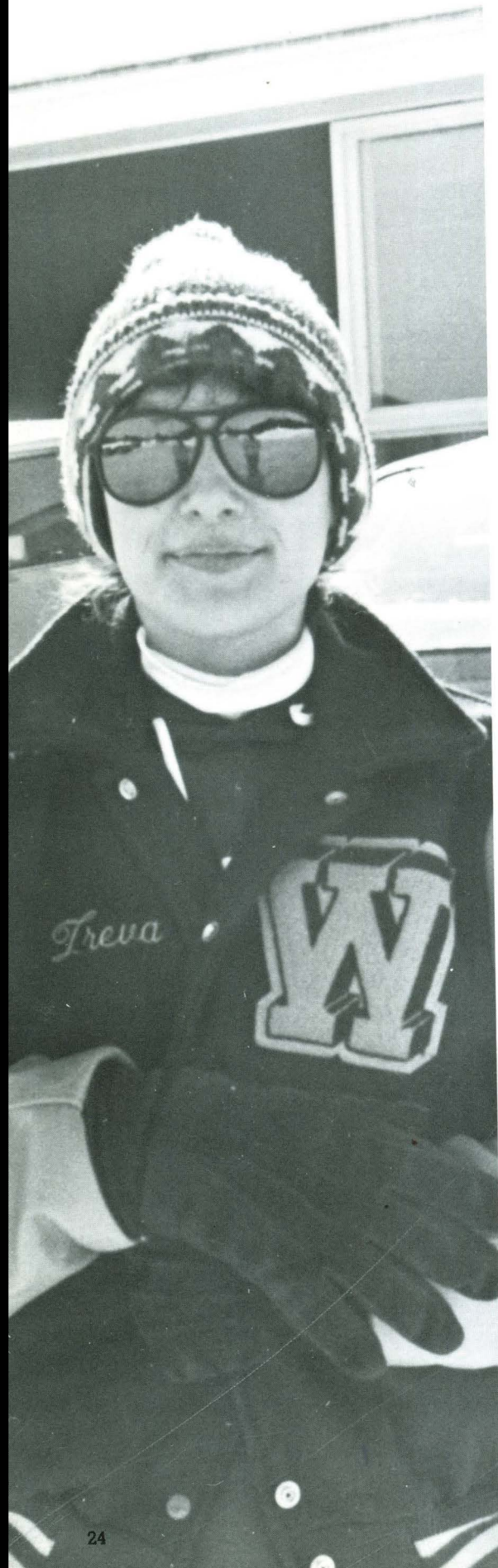


WISDOM HIGH SCHOOL CLASS OF 1991



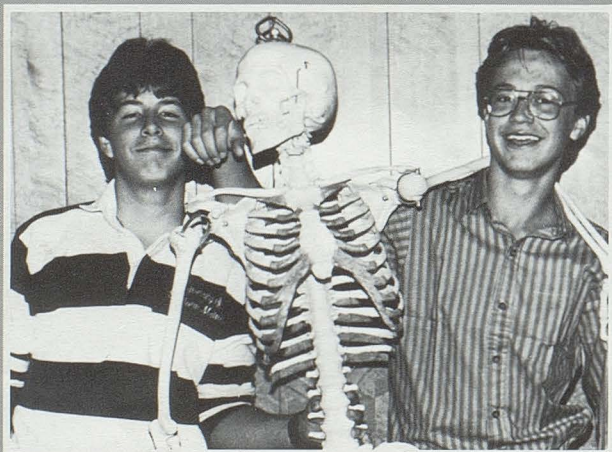
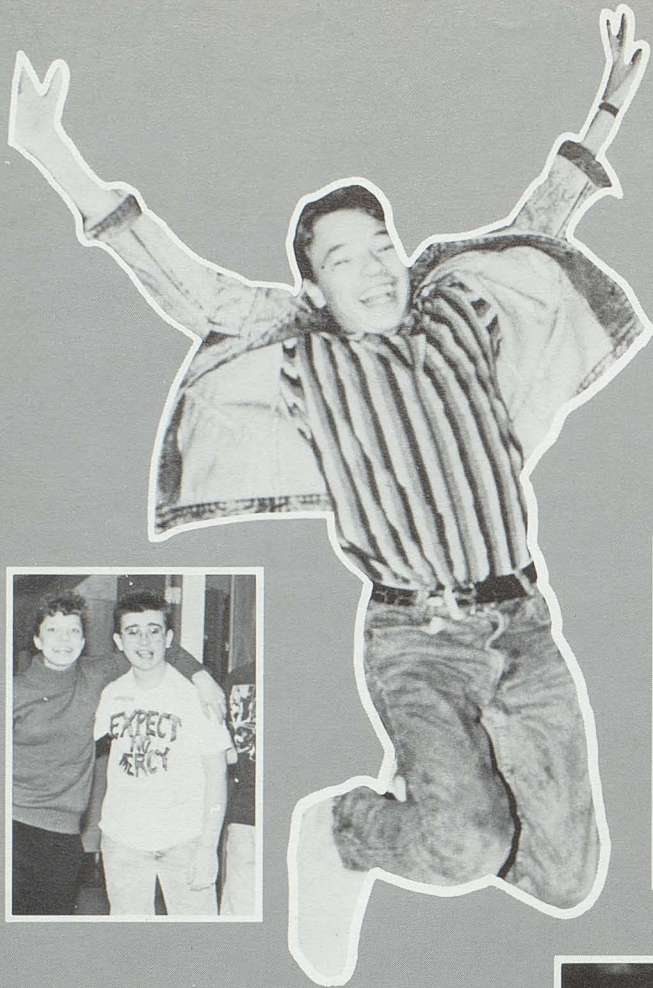
- ALBERT, TODD R.
ALDRETE, TREVA C.
BERUBE, JAMIE C.
BOUCHARD, TRACY L.
BOURGOIN, CHANTEL L.
BOURGOIN, TINA L.
CHAMBERLAIN, STACIE A.
CHAMBERLAND, GLEN N.
CHASSE, GARY
CHASSE, LARRY
CLAVETTE, TAMMY D.
COLLIN, PAULA A.
CORRIVEAU, PEGGY
COTE, TINA
CYR, DANNY R.
DAIGLE, DENA D.
DAIGLE, TODD P.
FONGEMIE, SHAWN
FORTIN, WENDY A.
FRANK, CRAIG A.
GAGNON, SCOTTE D.
GERVAIS, TERRANCE J.
GUERRETTE, LOLA M.
GUERRETTE, MICHELLE A.
GUERRETTE, SCOTT P.
HARRIS, SCOTT P.
HEBERT, JENNIFER I.
LABRIE, AARON L.
LAGASSE, DAVID R.
LEVESQUE, KEVIN A.
MARQUIS, SCOTT P.
MICHAUD, DENISE J.
MICHAUD, JENNIFER L.
MICHAUD, SCOTT E.
MICHAUD, TAMMY A.
MORNEAULT, KEITH A.
PARADIS, BARBARA L.
PARADIS, JASON D.
PELLETIER, JAMES E.
PELLETIER, KEITH
PICARD, JAMES
PICARD, KEVIN
RAYMOND, GARY
SAUCIER, MIRA T.
SIROIS, KENNETH A.
SIROIS, MARK R.
SOUCY, LAURA A.
TALBOT, ARIANA
THIREAULT, BRUCE A.
THIBEAULT, JASON J.
THIBEAULT, LYNN A.





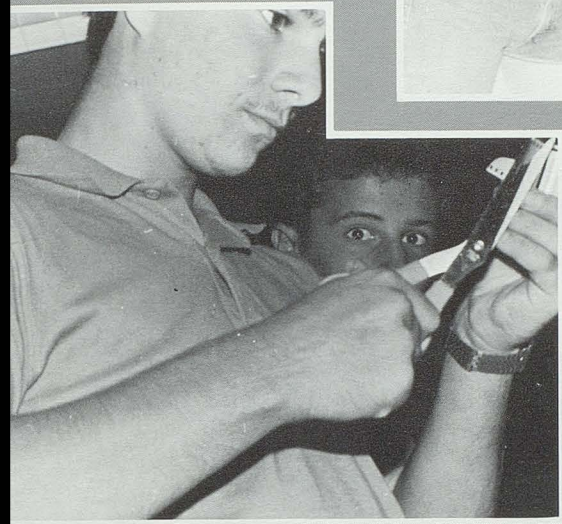
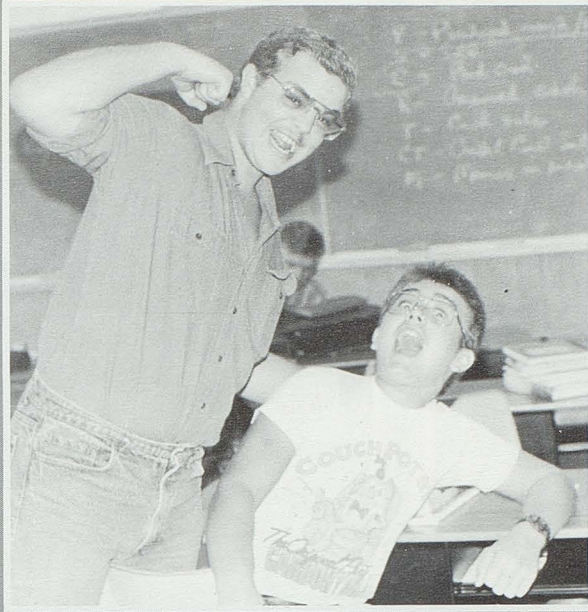


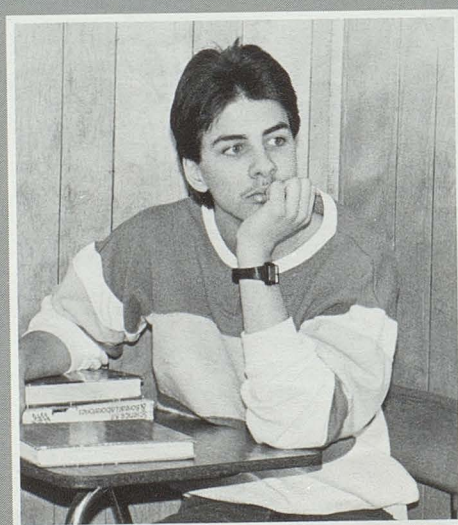
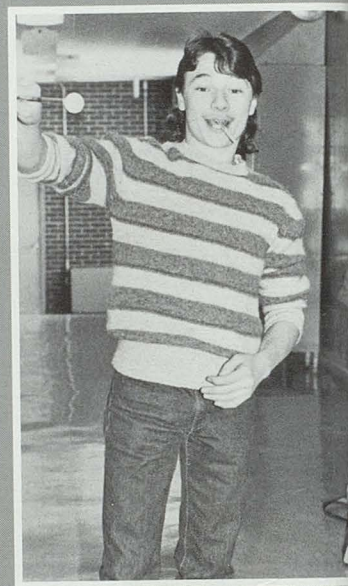
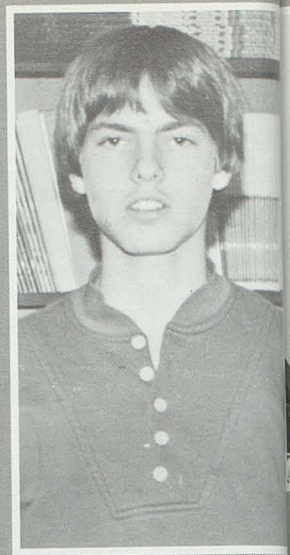
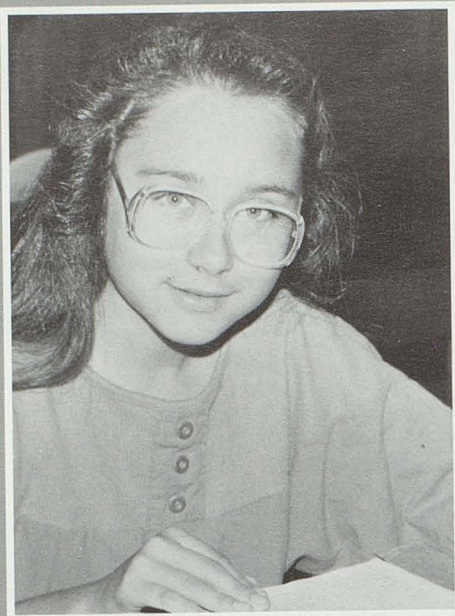
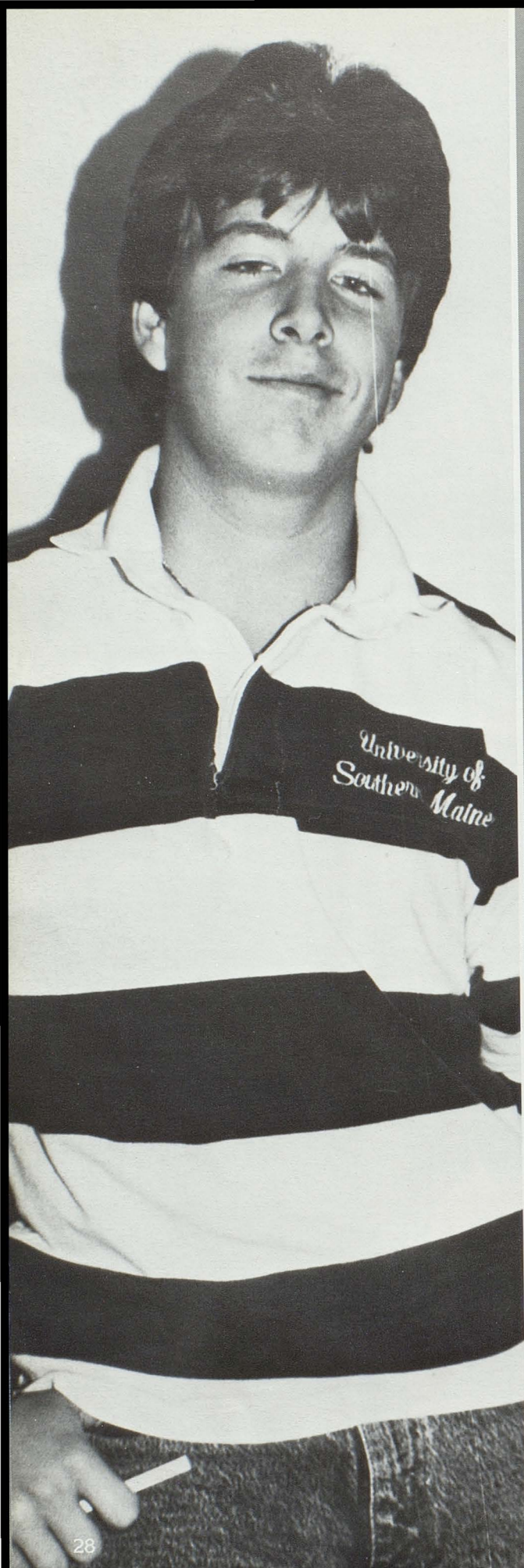
F
R
E
S
H
M
E
N

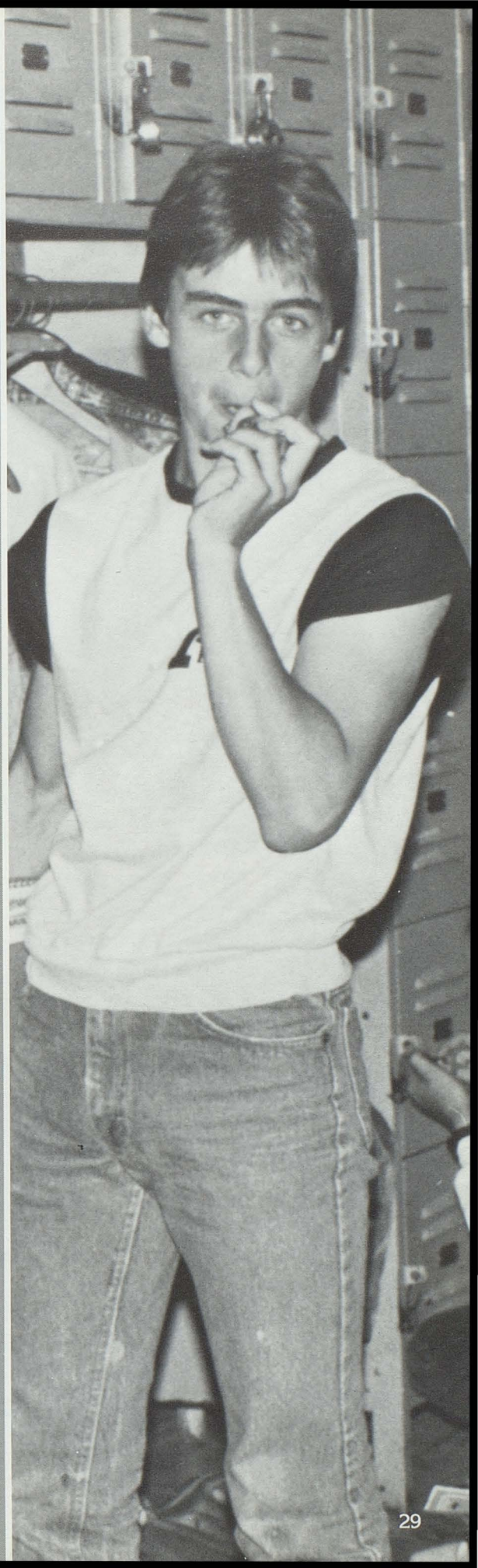
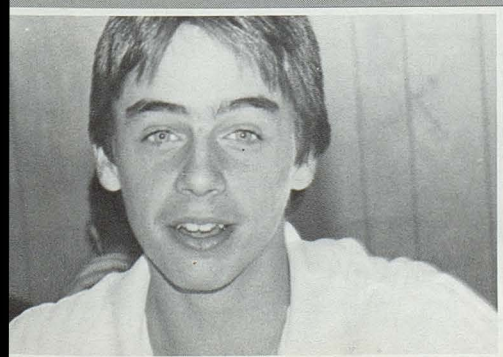
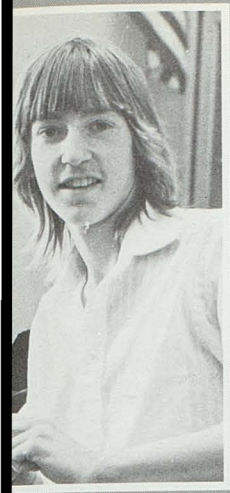


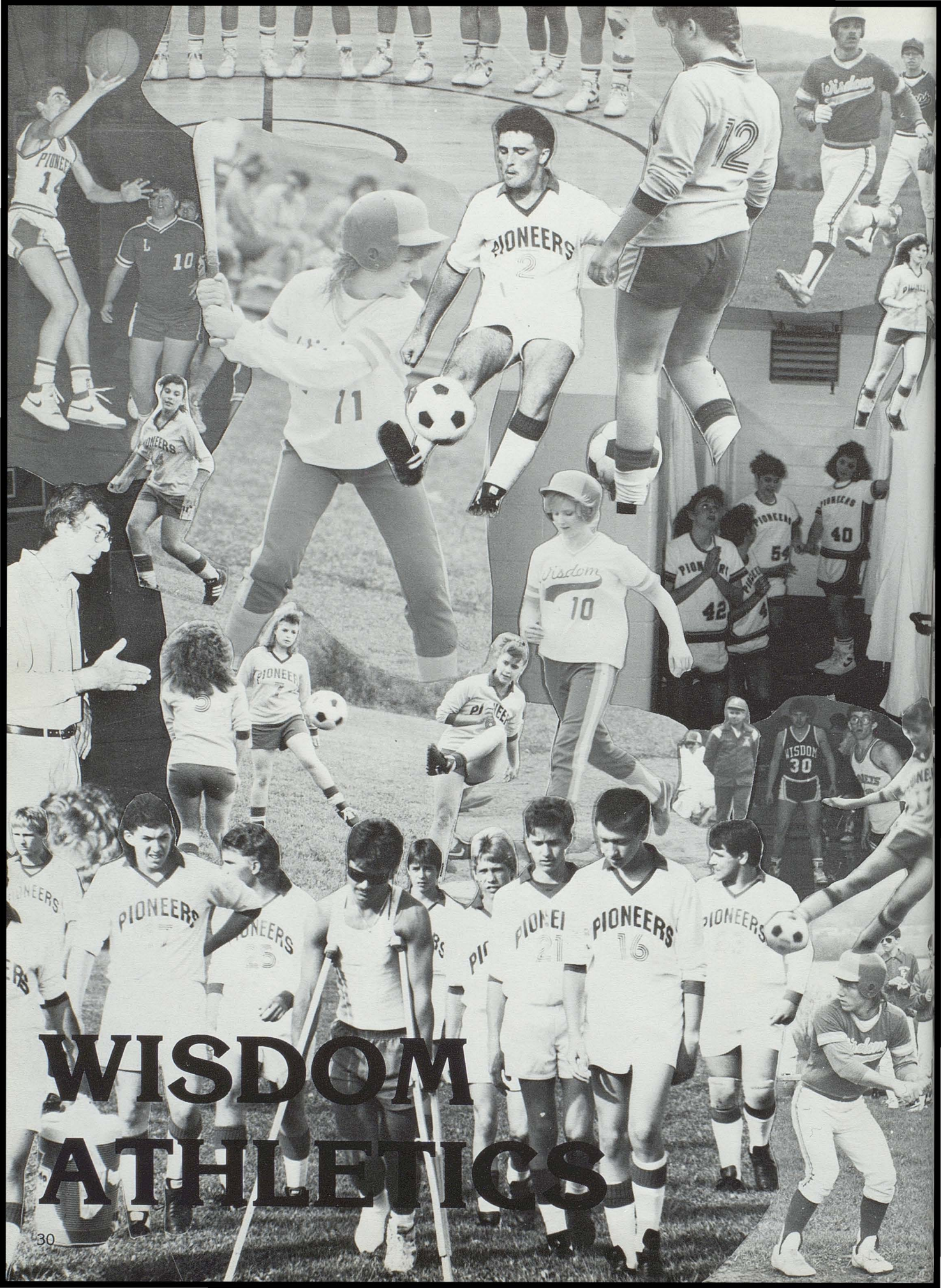
WISDOM HIGH SCHOOL CLASS OF 1992

AMADON, BRIAN
 AYOTTE, RANDY L.
 BERUBE, JEFFRY G.
 BOUCHARD, SCOTT
 BUTLER, IRVIN
 CHASSE, KEVIN J.
 CHASSE, SCOTT R.
 CYR, AMY
 DAIGLE, SAMMY
 DAIGLE, TINA B.
 DAIGLE, TROY
 DUBOIS, SCOTT R.
 DUMAIS, JESSIE D.
 FONGEMIE, KIRK T.
 GUERRETTE, RANDY P.
 GUERRETTE, RONNIE
 LAGASSE, SHANNON D.
 MCGLAUGHLIN, JASON L.
 MICHAUD, NAOMI A.
 MICHAUD, TRACY L.
 OLMSTED, ANGELA M.
 OUELLETTE, CHAD J.
 PARADIS, STACIE J.
 PELLETIER, DAVID S.
 PELLETIER, MICHAEL J.
 PELLETIER, TAMMY J.
 PICARD, GLEN
 RINGUETTE, TOMMY
 ROY, PAUL S.
 SIROIS, BEVERLY A.
 TARDIF, JASON J.
 VIOLETTE, JONATHON P.
 WARNER, JENNIFER
 WRISLEY, APRIL L.









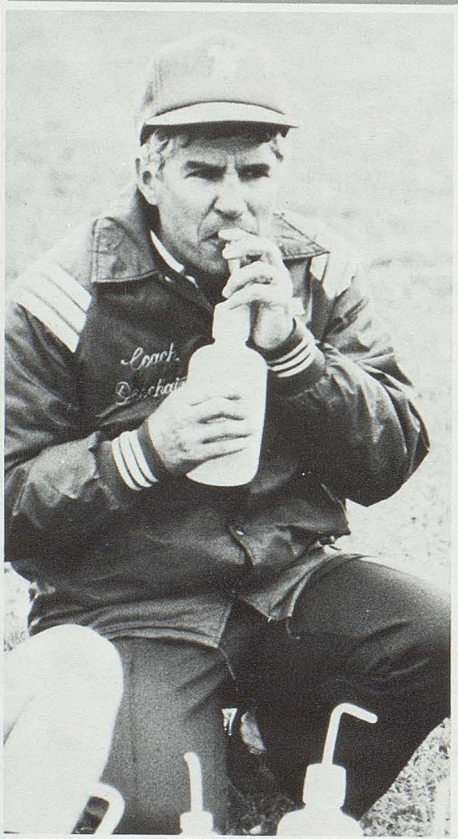
WISDOM ATHLETICS



GIRLS SOCCER



Front Row: Nicole Corriveau, Leta Fongemie, Lisa Desjardin, Connie Plourde, Lisa Chamberland, Robin Wrisley, Shelly Couture, Jill Edgecomb, Julie Roy
 2nd Row: Dona Saucier, Treva Aldrete, Ariana Talbot, Sandy Sirois, Myra Michaud, Kelly Michaud, Chantel Bougoin, Paula Collin, Miriam Talbot
 3rd Row: Coach Deschaine, Amy Cyr, Tracy Michaud, Shannon Lagasse, Tammy Pelletier, April Wrisley, Naomi Michaud



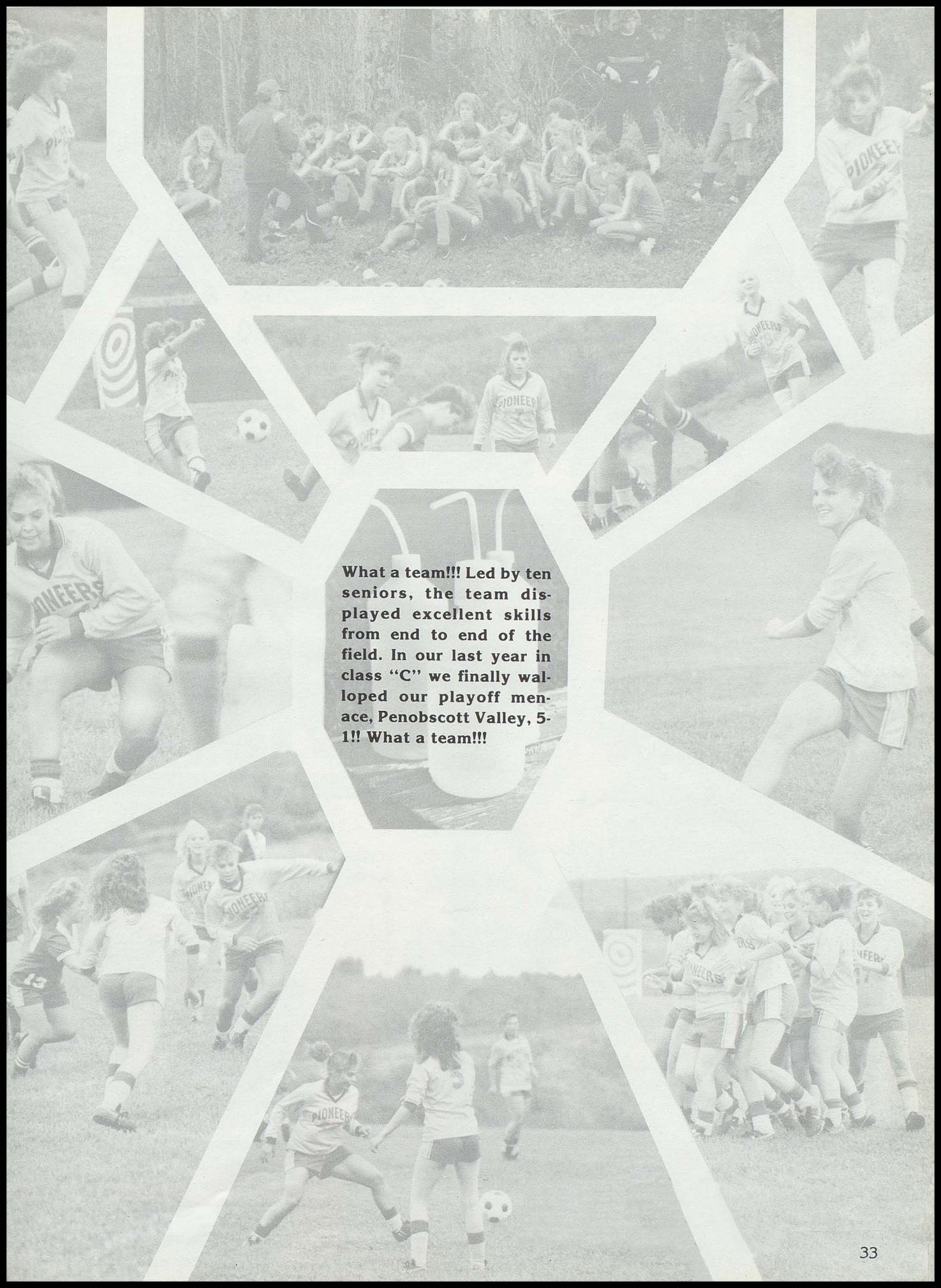
COACH
 JOE DESCHAIINE



Captains — Jill Edgecomb, Leta Fongemie, Julie Roy, Robin Wrisley

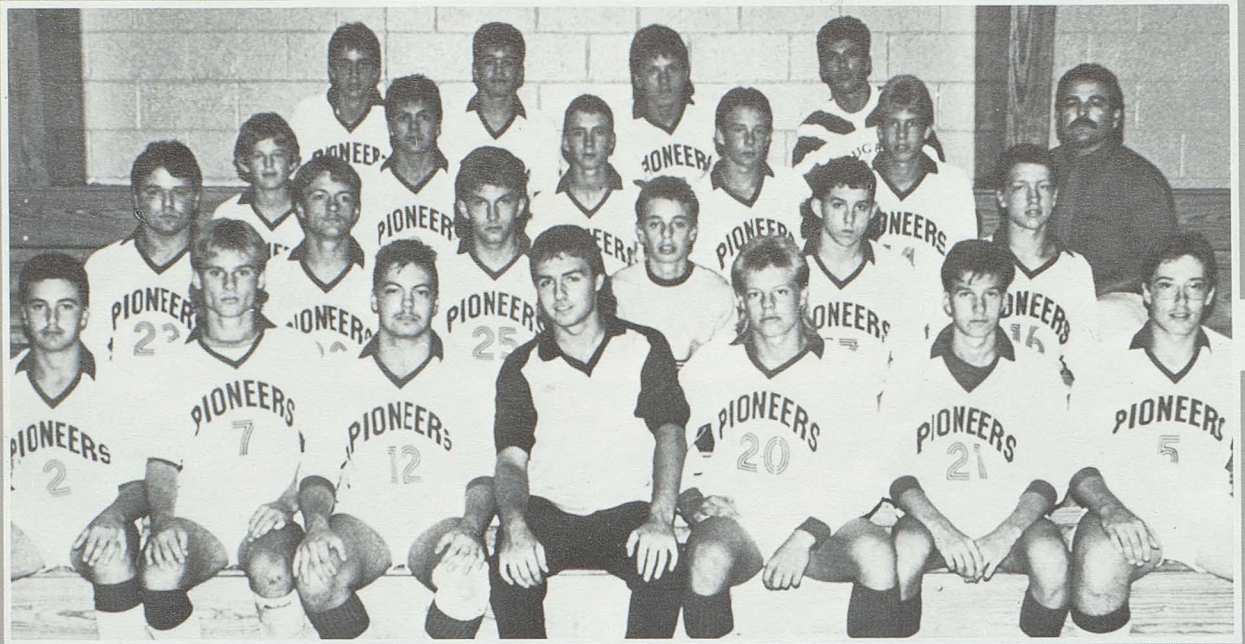
<i>Wisdom</i>	<i>Game</i>	<i>Opponent</i>
1	Washburn	2
1	Central Aroostook	4
1	Fort Kent	3
1	Madawaska	1
3	Van Buren	3
5	Ashland	3
2	Van Buren	1
2	Fort Kent	2
0	Ashland	1
1	Madawaska	1
6	Presque Isle	3
5	Mars Hill	1
1	Washburn	2
5	Penobscot Valley	1

5 Wins — 4 Ties — 5 Losses

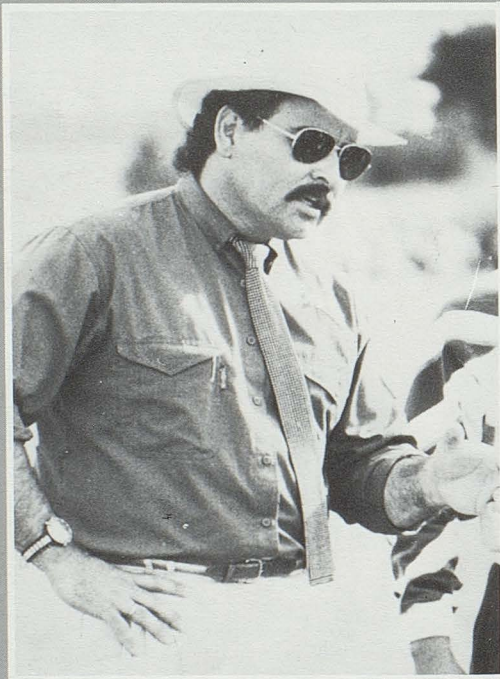


What a team!!! Led by ten seniors, the team displayed excellent skills from end to end of the field. In our last year in class "C" we finally walloped our playoff menace, Penobscott Valley, 5-1!! What a team!!!

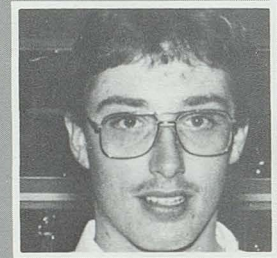
BOYS SOCCER



Front Row, L to R: Shawn Ouellette, Todd Dumond, Mark Daigle, Jason Morneau, Scott Sinclair, Scott Lavertu, Keith Bourgoin. 2nd Row: Paul Nadeau, Jason Morneau, Dennis Michaud, Scott Guerrette, Andrew McQuarrie, James Dugal. 3rd Row: Jamie Berube, Danny Cyr, Scott Gagnon, Mark Sirois, Scott Michaud, Coach Aldrete. 4th Row: Randy Guerrette, David Pelletier, James Corriveau, Asst. Coach Mark Diaz.



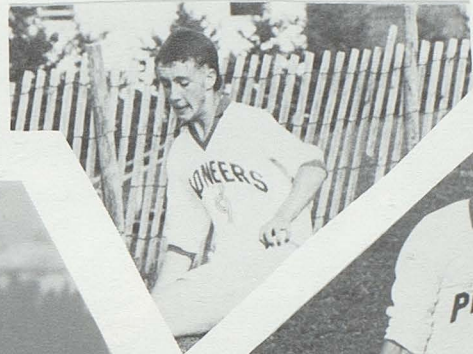
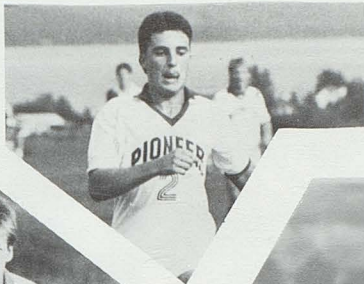
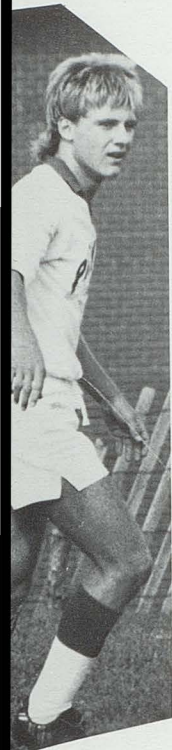
COACH
MIKE ALDRETE



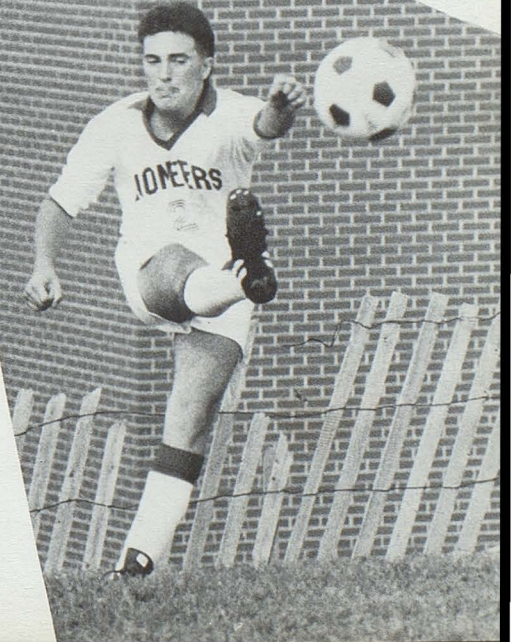
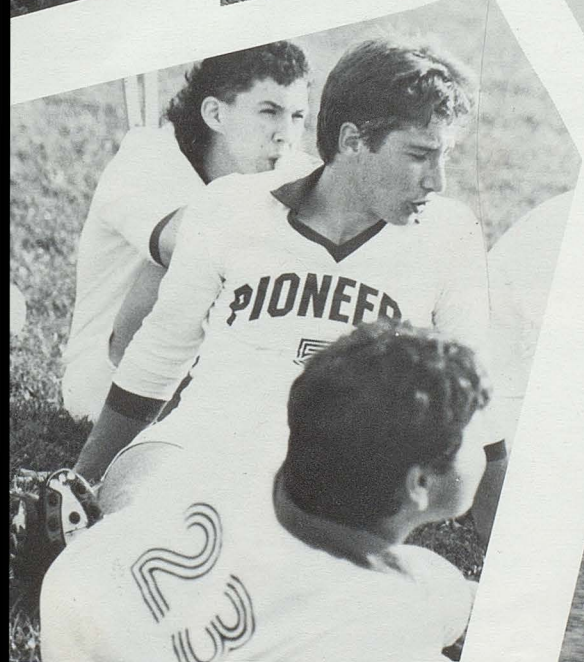
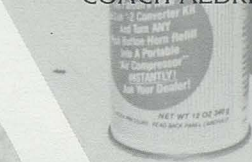
CAPTAINS
LEFT
SHAWN
OUELLETTE
RIGHT
KEITH
BOURGOIN

Wisdom Score	Opponent	Opponent Score
4	Washburn	0
2	Central Aroostook	2
7	Easton	1
0	Central Aroostook	1
2	Ashland	5
4	Easton	0
9	Van Buren	3
1	Limestone	2
0	Ashland	1
2	Southern Aroostook	1
4	Southern Aroostook	1
4	Fort Fairfield	1
1	Madawaska	4
1	Washburn	0
0	Woodland	1

8 Wins — 1 Tie — 6 Losses



"WE HAD ABOUT 8 SENIORS ON THE TEAM AND IT CULMINATED IN US GOING TO THE PLAYOFFS, WHICH ALL ADDED UP TO A SUCCESSFUL SEASON FOR US"
COACH ALDRETE

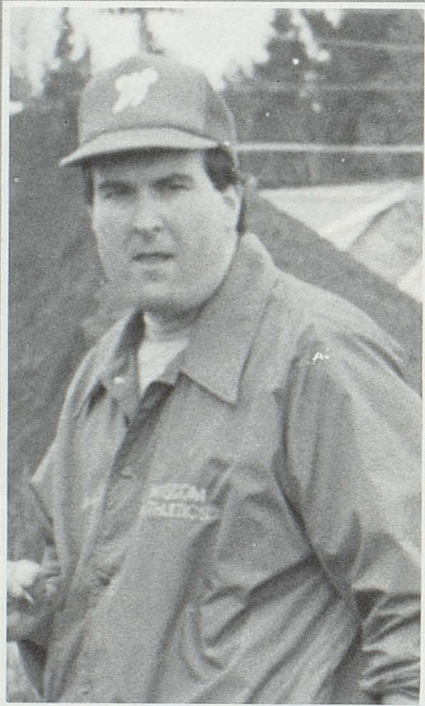


GIRLS

BASKETBALL



Front Row: Jill Edgecomb, Robin Wrisley, Julie Roy
 Back Row: Shannon Lagasse, Chantel Bourgoin, Paula Collin, Amy Cyr, Leta Fongemie, April Thibeault, Treva Aldrete, Tammy Pelletier,
 Coach Barry Coonan

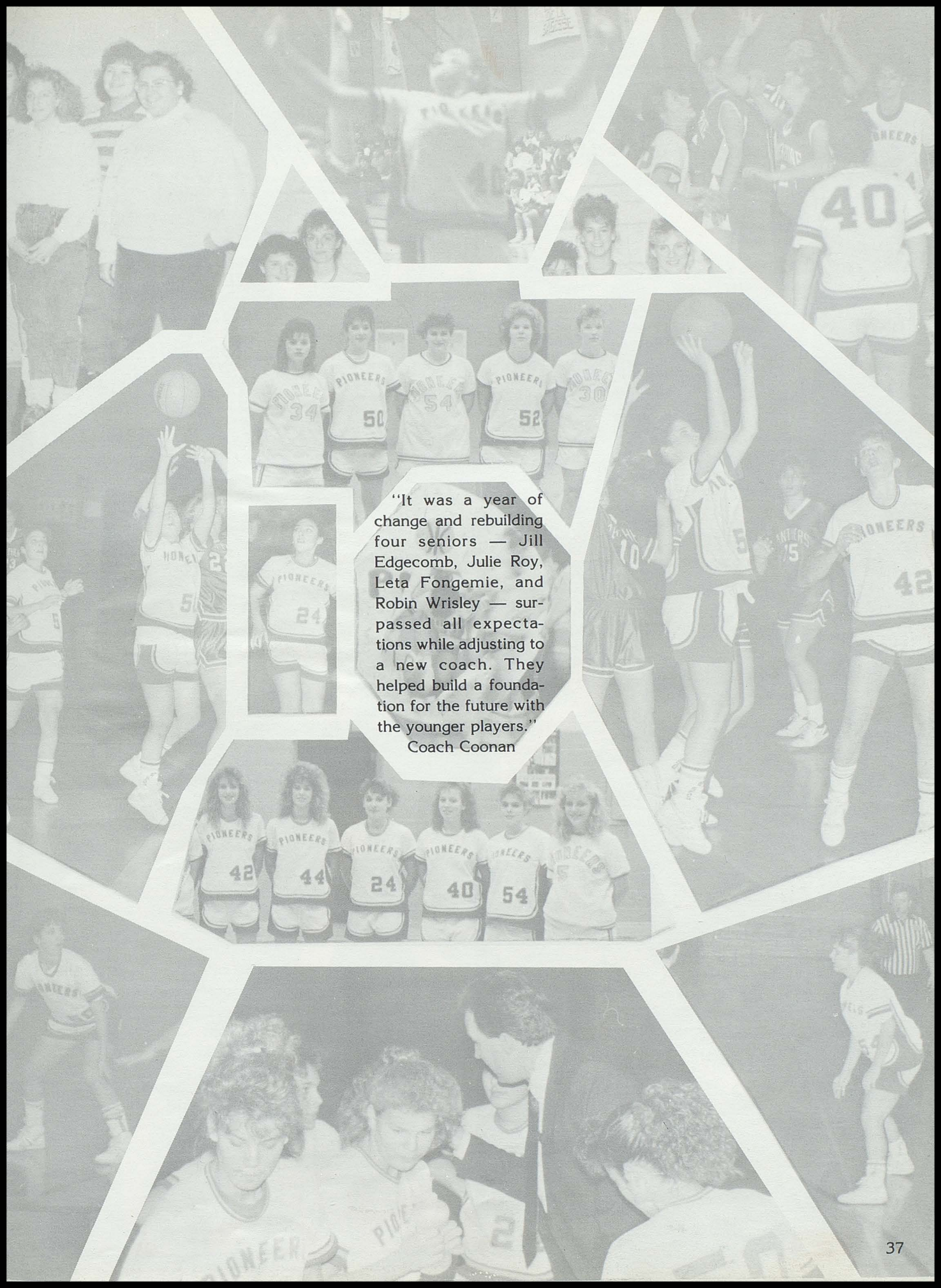


COACH
 Barry Coonan



Captains — Julie Roy, Robin Wrisley, Jill Edgecomb

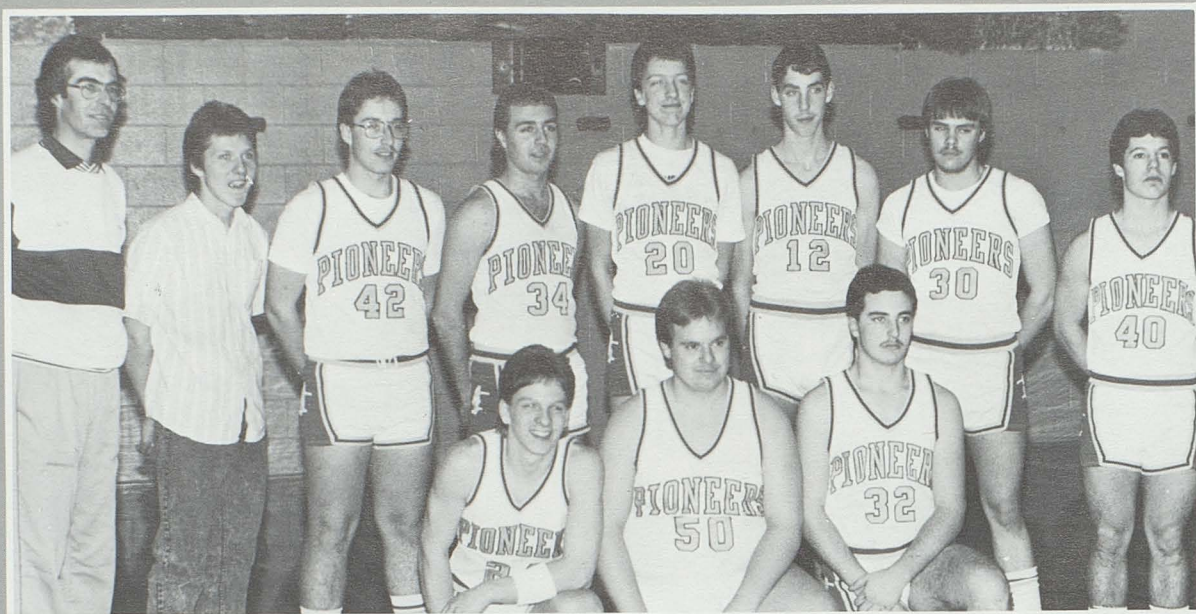
Wisdom Score	Opponent	Opponent Score
40	Madawaska	55
54	Allagash	39
41	Washburn	64
37	Fort Kent	72
48	Van Buren	32
36	Ashland	55
32	Limestone	61
30	Hodgdon	44
36	Allagash	37
34	Central Aroostook	68
34	Van Buren	33
24	Fort Kent	59
39	Ashland	55
39	Central Aroostook	67
46	Limestone	64
30	Washburn	56
35	Hodgdon	56
26	Madawaska	53



"It was a year of change and rebuilding four seniors — Jill Edgecomb, Julie Roy, Leta Fongemie, and Robin Wisley — surpassed all expectations while adjusting to a new coach. They helped build a foundation for the future with the younger players."

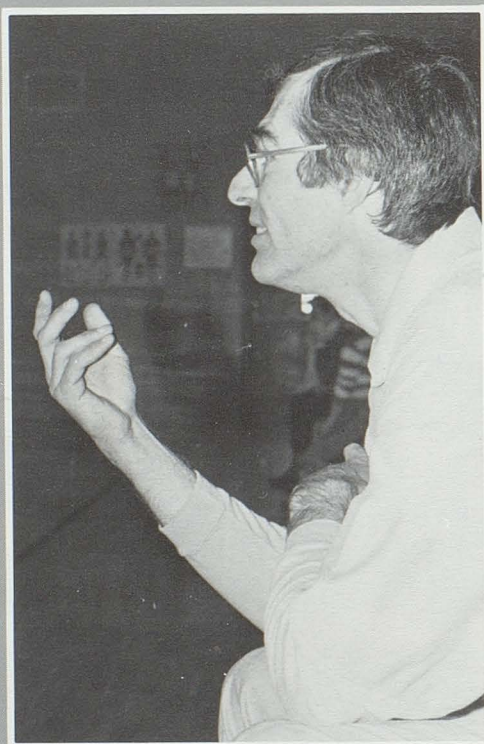
Coach Coonan

BOYS

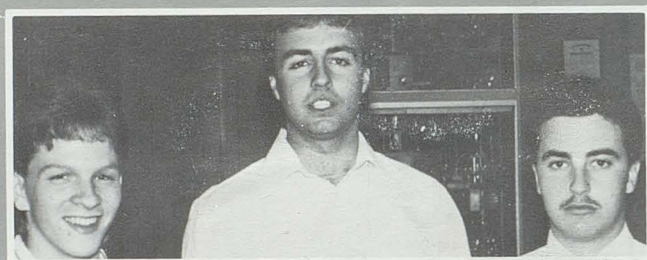


Front Row: Bruce Gervais, David Albert, Shawn Ouellette
 2nd Row: Coach Leroy, James Corriveau, Keith Bougoin, Jason Morneau, James Dugal, David Lagasse, Phil Guerrette, Gary Chamberland

BASKETBALL



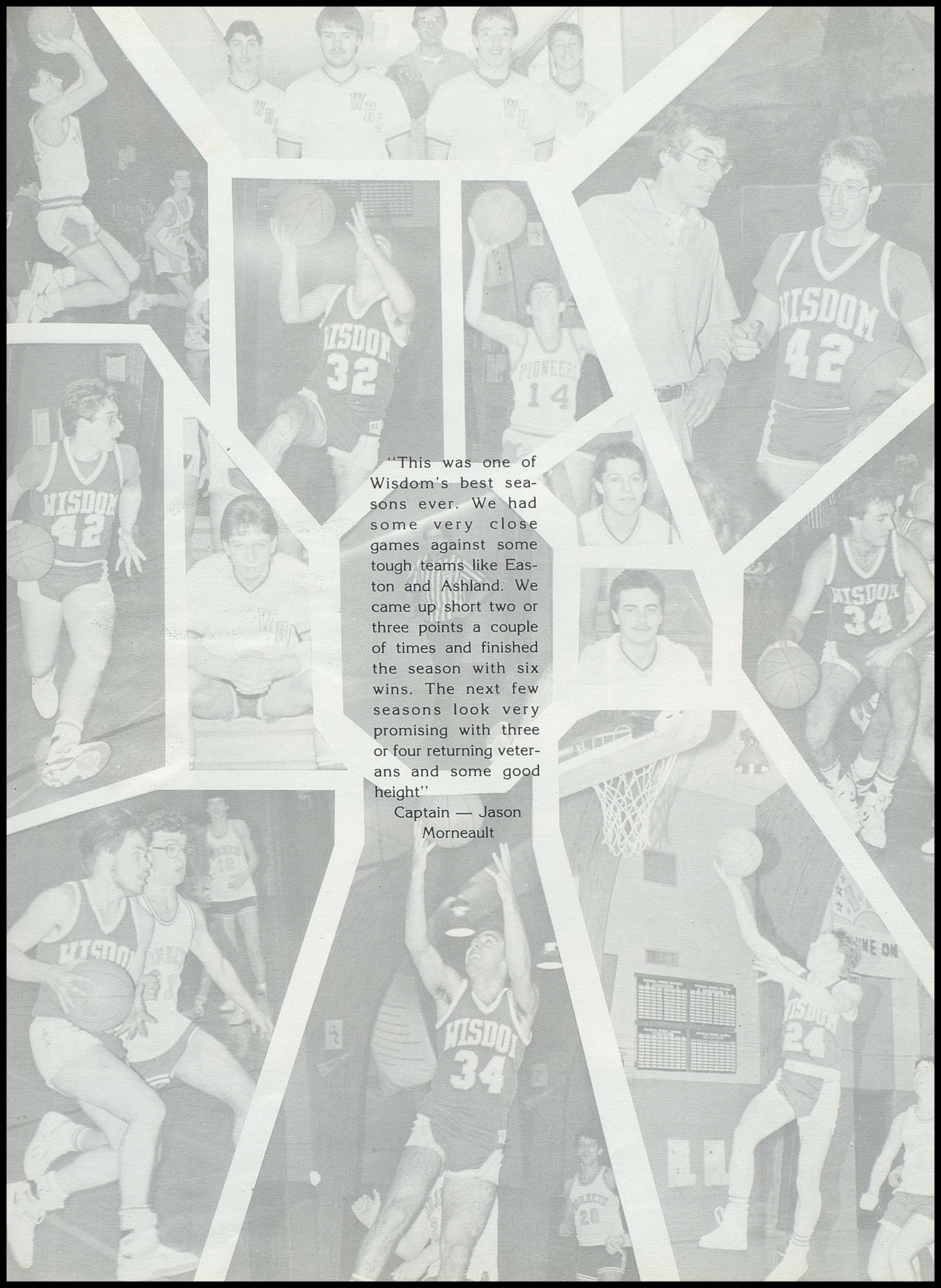
COACH LEROY



CAPTAINS
 BRUCE GERVAIS — JASON MORNEAULT — SHAWN OUELLETTE

Wisdom Score	Opponent	Opponent Score
46	East Grand	44
55	Fort Kent	67
58	Allagash	60
65	Ashland	79
52	Madawaska	66
51	Easton	58
52	Jonesport	89
56	Ashland	84
55	Fort Kent	84
58	East Grand	53
61	Van Buren	65
56	Van Buren	54
39	Madawaska	47
51	Allagash	49
61	Lubec	52
49	Lubec	46
41	Easton	73

6 Wins — 11 Losses



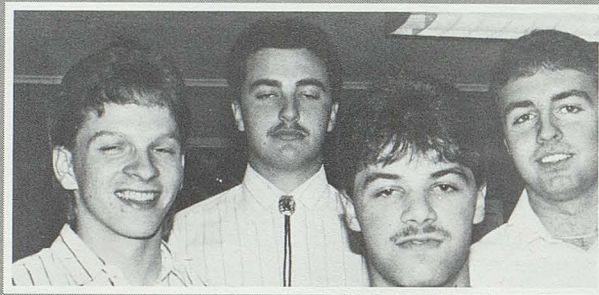
"This was one of Wisdom's best seasons ever. We had some very close games against some tough teams like Easton and Ashland. We came up short two or three points a couple of times and finished the season with six wins. The next few seasons look very promising with three or four returning veterans and some good height"

Captain — Jason Morneault

BOYS VOLLEYBALL

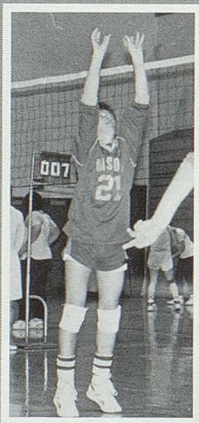


Front Row: Danny Cyr, Steve Ouellette, Shawn Ouellette, Scott Gagnon, Back Row: Coach Michael Aldrete, Bruce Gervais, Scott Lavertu, James Dugal, Todd Dumond, Jon Pelletier, Jason Morneau.



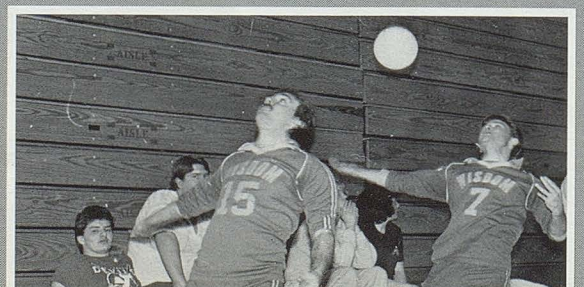
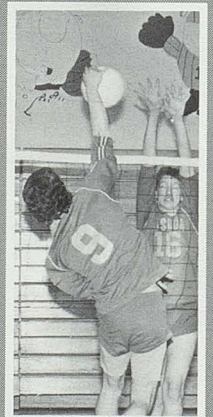
CAPTAINS

Bruce Gervais, Shawn Ouellette, Jon Pelletier, Jason Morneau.



WISDOM SCORE	OPPONENT/GAME	OPPONENT SCORE
15	SOUTHERN AROOSTOOK	
15	GAME 1	2
	GAME 2	1
	ASHLAND	
15	GAME 1	7
15	GAME 2	9
	LIMESTONE	
15	GAME 1	4
15	GAME 2	5
	CENTRAL AROOSTOOK	
15	GAME 1	8
17	GAME 2	15

ANOTHER WISDOM TOURNAMENT VICTORY!



GIRLS COUNTY VOLLEYBALL CHAMPS



Nic



Tre



Lées



Léet



Mëer



Girls volleyball team continued their dominance in Aroostook County by capturing the Presque-Isle invitational tournament and the Aroostook County Championship. Individual honors go to Julie, Jill and Leta who made the all tournament team at the Presque-Isle invitation.

Aim



Harpo

Barry "Carry" Coonan



Rob

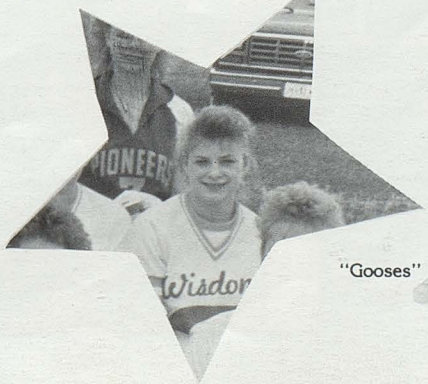
Sand



Don



Jule



"Gooses"

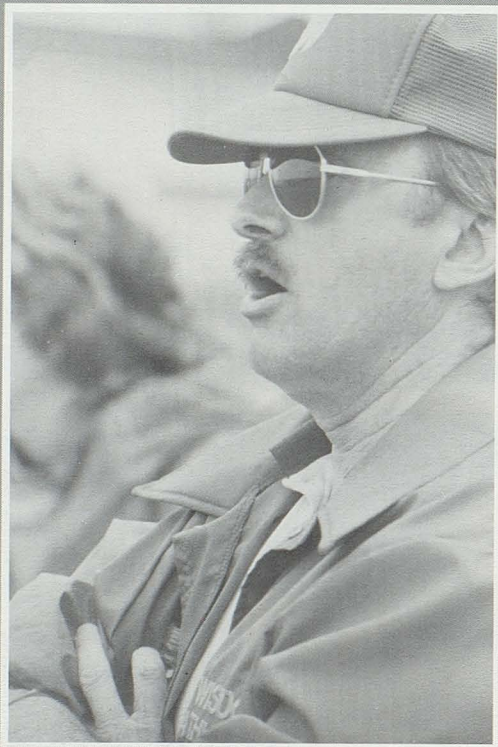


Jilly

GIRLS SOFTBALL



Front Row: Nicole Corriveau, Julie Roy, Jill Edgecomb, Leta Fongemie, Connie Plourde, Kim Warner.
 2nd Row: Tina Bosse, Myra Michaud, Treva Aldrete, Shannon Lagasse, Chantel Bougoin, Sandy Sirois.
 3rd Row: Coach Ouellette, Tracy Michaud, Amy Cyr, Tina Bougoin, Paula Collin, Jen Warner

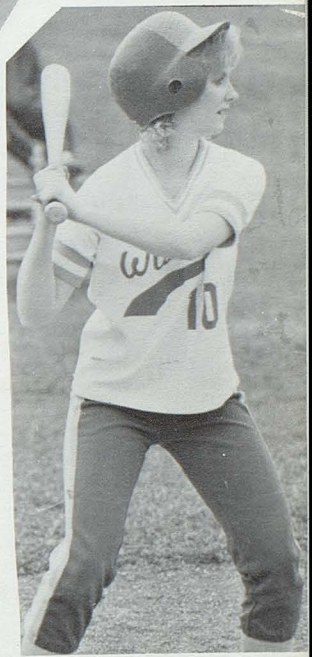


COACH
 Greg Ouellette

CAPTAINS: Nicole Corriveau, Julie Roy, Jill Edgecomb, Leta Fongemie.

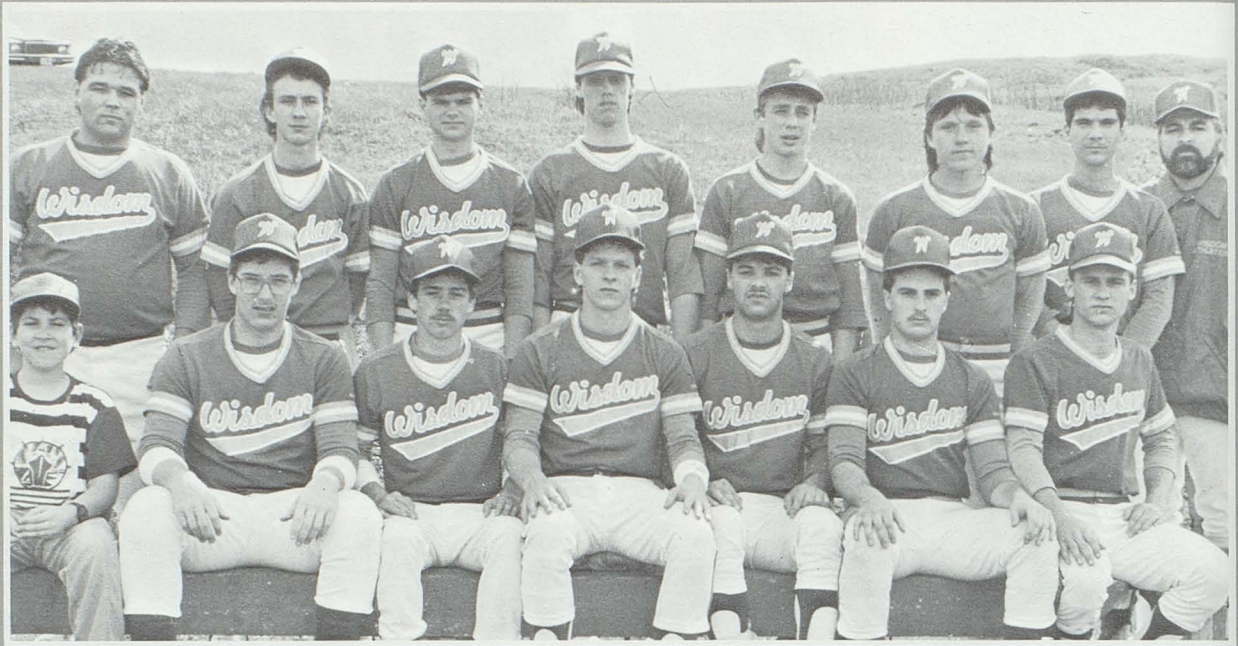
WISDOM SCORE	OPPONENTS	OPPONENTS SCORE
2	CENTRAL AROOSTOOK	18
12	MADAWASKA	12
13	WASHBURN	7
20	VAN BUREN	8
17	ASHLAND	16
11	ASHLAND	9
14	VAN BUREN	5
2	CENTRAL AROOSTOOK	11
3	FORT KENT	12
11	EASTON	6
20	EASTON	8
15	WASHBURN	11
12	FORT KENT	7
8	MADAWASKA	6
	PLAYOFF GAME	
7	LEE ACADEMY	10

10 WINS — 4 LOSSES — 1 TIE

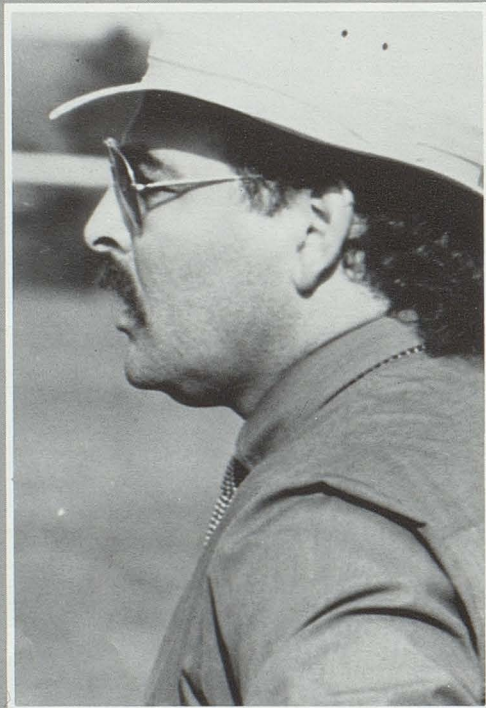


ONE OF THE BET-
TER SOFTBALL PRO-
GRAMS IN AROOSTOOK
COUNTY CAN BE FOUND AT
WISDOM HIGH SCHOOL. UN-
DER THE DIRECTION OF COACH
GREG OUELLETTE, WISDOM HAS
COMPILED ANOTHER OUTSTAN-
DING RECORD THIS YEAR AS THEY
HAVE CHALKED UP 11 WINS
AGAINST ONLY 3 LOSSES. — DON
ARNOLD





FRONT ROW: BAT BOY TONY ALDRETE, KEITH BOURGOIN, STEVE OUELLETTE, BRUCE GERVAIS, JON PELLETIER, SHAWN OUELLETTE, TODD DUMOND, BACK ROW: PAUL NADEAU, SCOTT GAGNON, KEVIN LEVESQUE, MARTIN MOSHIER, SCOTT GUERRETTE, JAMES CORRIVEAU, JASON TARDIF, COACH MIKE ALDRETE



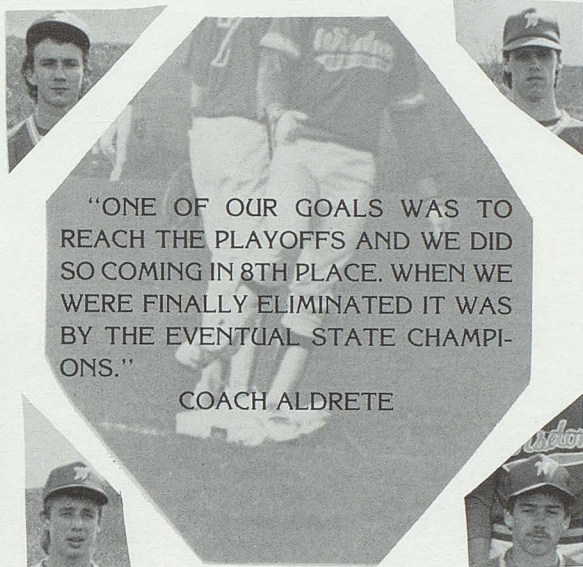
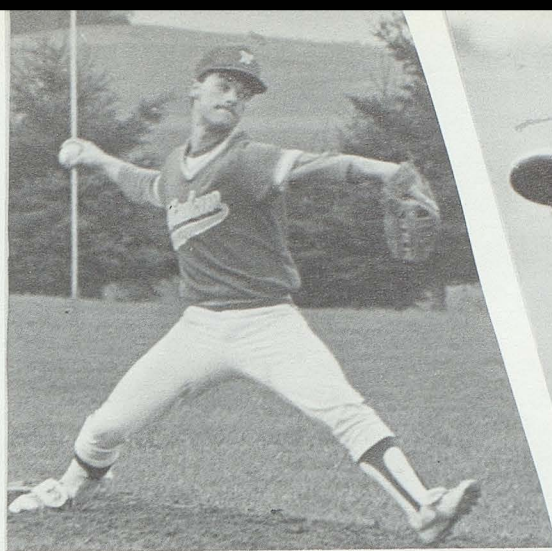
**COACH
MIKE ALDRETE**



CAPTAINS
LEFT:
BRUCE
GERVAIS
RIGHT:
JON
PELLETIER

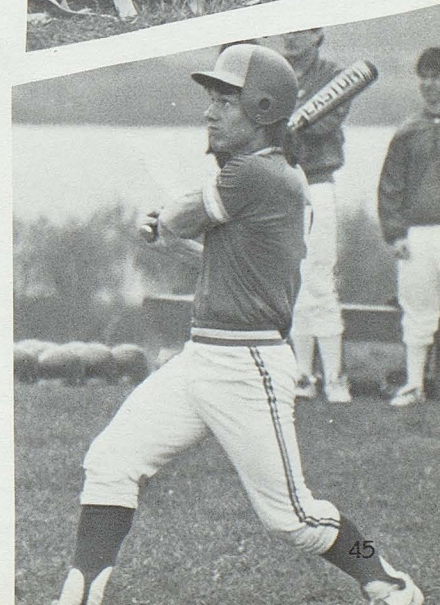
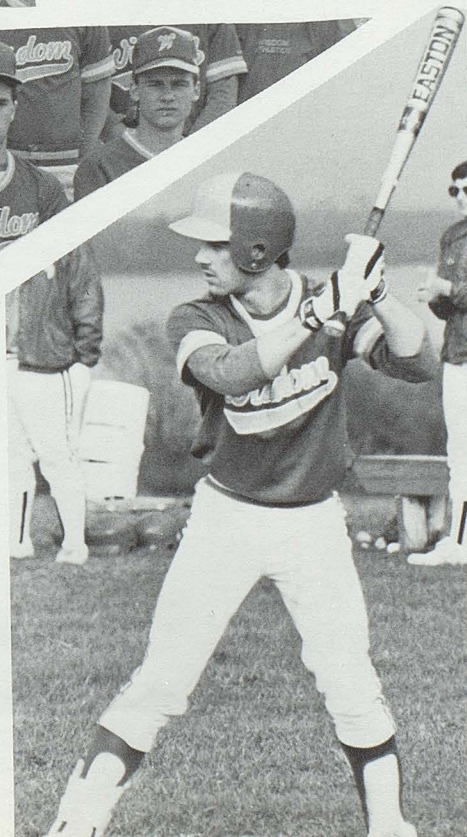
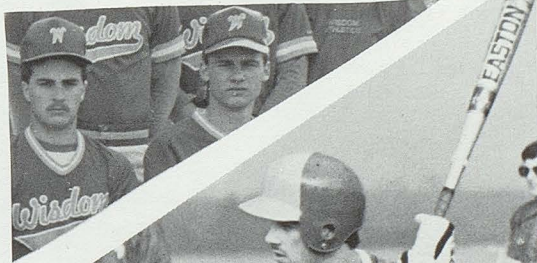
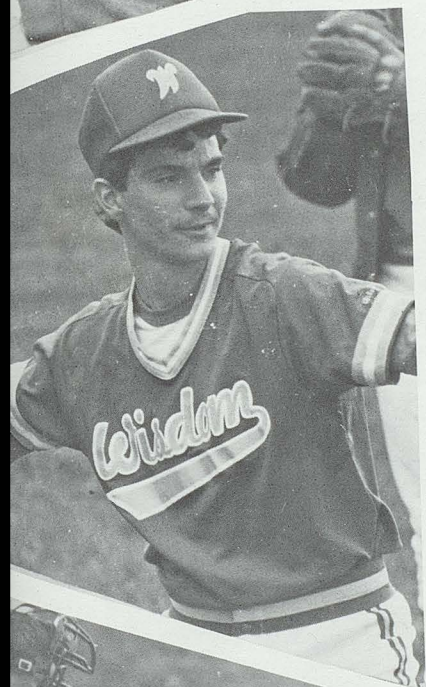
WISDOM SCORE	OPPONENTS	OPPONENTS SCORE
2	WASHBURN	8
2	CENTRAL AROOSTOOK	8
16	VAN BUREN	10
5	ASHLAND	12
1	ASHLAND	3
19	VAN BUREN	6
1	MADAWASKA	3
13	CENTRAL AROOSTOOK	9
5	FORT KENT	4
13	FORT KENT	1
10	WASHBURN	15
11	FORT FAIRFIELD	4
9	FORT FAIRFIELD	1
2	MADAWASKA	10
	PLAYOFF GAME	
1	SOUTHERN AROOSTOOK	10
	7 WINS — 8 LOSSES	

B A S E B A L L



"ONE OF OUR GOALS WAS TO REACH THE PLAYOFFS AND WE DID SO COMING IN 8TH PLACE. WHEN WE WERE FINALLY ELIMINATED IT WAS BY THE EVENTUAL STATE CHAMPIONS."

COACH ALDRETE



C H E E R L E A D E R S



Naomi Michaud, Lola Guerrette, Tina Beaulieu, Jennifer Michaud, Barbara Paradis, Tracy Bouchard, Tammy Martin, Jennifer Warner, Kelly Michaud

