

Description:

Sentry Sprinklers Model WH68 is a Wet Barrel Fire Hydrant suited for a non-freezing environment. The hydrant offers high flow with a pipe connection flange of 6". As an option, the hydrant can be supplied with a flange monitor. The hydrant is anti-corrosion with 10 mil (250µ) of Polyurethane Ultraviolet-Proof coating on the outside and 6 mil (150µ) on the inside. All other components are made of corrosive resistance materials.



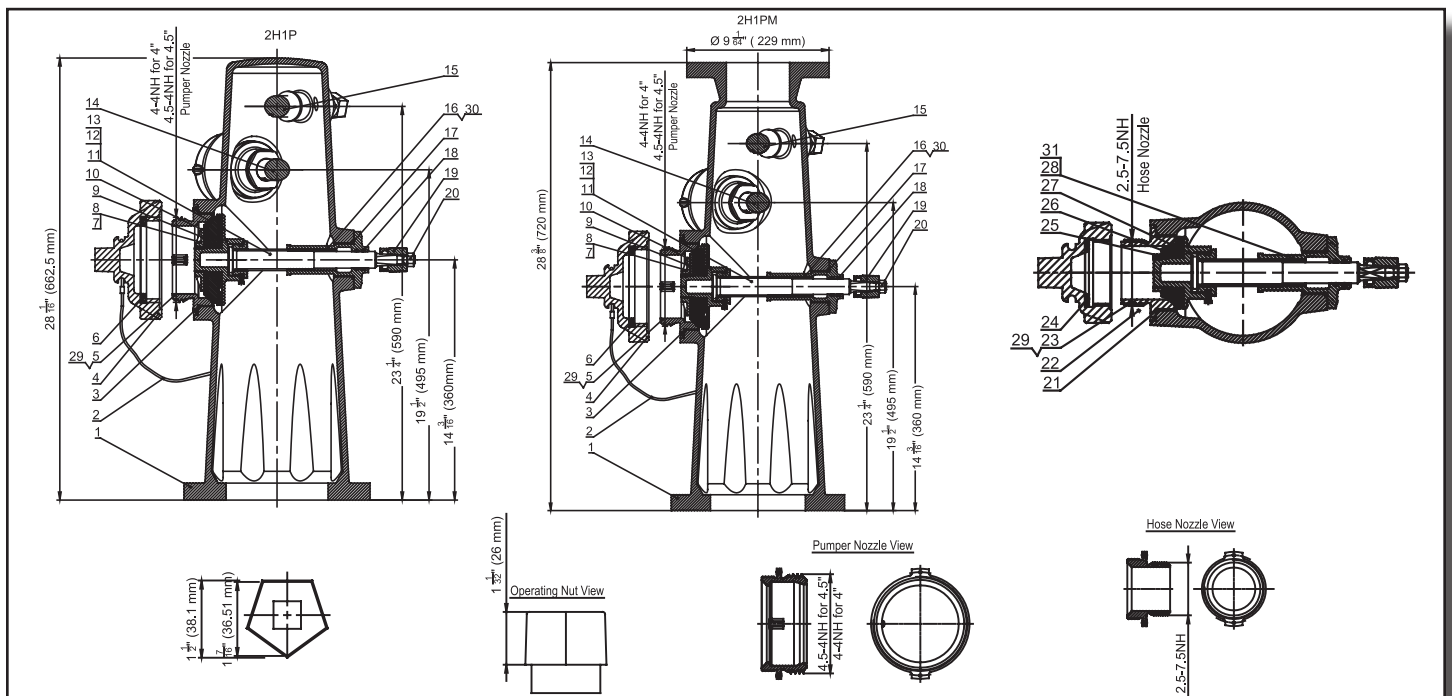
Features:

- Maximum working pressure 250 PSI (17.25 Bar) @ -10° F-248° F, (10° C-120° C).
- NST Hose Nozzles 2 ½".
- NST Pumper Nozzle 4" or 4 ½".
- Monitor Flange 4" ANSI Class 125/150.
- Conforms to AWWA C503, UL 246 and FM 1511.
- 6" Shoe Flange ANSI Class 125 /150 or BS EN1092-2 PN10/PN16.
- Hydrant color Red.

Model WH68



Dimensions:



Material List:

ITEM	NAME	QTY	MATERIAL	COMMENT	ITEM	NAME	QTY	MATERIAL	COMMENT
1	Body (2H1PM)	1	65-45-12	-	15	Shaft Three	1	SS304/SS420	-
2	Steel Wire Rope	3	SS304	-	16	4.5Shaft Nut	1	C84400	-
3	O-Ring	1	EPDM	136 x 3.55	17	O-Ring	3	EPDM	45 x 3.55
4	Pumper Nozzle Cap (4.5")	1	65-45-12	-	18	O-Ring	6	EPDM	25 x 3.55
	Pumper Nozzle Cap (4")	1	65-45-12	-	19	Operating Nut	3	CF8	-
5	Pumper Nozzle (4.5")	1	C84400	-	20	Hex Nut	3	A2-70	M12
	Pumper Nozzle (4")	1	C84400	-	21	O-Ring	2	EPDM	85 x 3.55
6	Pumper Nozzle Gasket (4.5")	1	EPDM	-	22	Hose Nozzle Cap	2	65-45-12	-
	Pumper Nozzle Gasket (4")	1	EPDM	-	23	Hose Nozzle	2	C84400	-
7	4.5" Gland	1	CF8	-	24	Hose Nozzle Gasket	2	EPDM	-
8	Hex. Socket Set Screws with Flat Point	3	A2	M5 x 6	25	2.5"Gland	2	CF8	-
9	4.5" Disc Sealing Ring	1	EPDM	-	26	2.5"Disc Sealing Ring	2	EPDM	-
10	4.5" Disc	1	CF8	-	27	2.5"Disc	2	CF8	-
11	Shaft One	1	SS304/SS420	-	28	Shaft Two Stem Nut	1	C84400	-
12	Fasten Nut	3	CF8	-	29	Hex. Socket Set Screws with Flat Point	6	Carbon Steel+Zn	M5 x 10
13	Hex. Socket Cap Screw	3	A2-70	M4 x 12	30	Hex. Socket Set Screws with Flat Point	6	Carbon Steel+Zn	M5 x 16
14	Shaft Two	1	SS304/SS420	-	31	Shaft Three Stem Nut	1	C84400	-

Technical Specifications:

Design Standard	FM 1511/UL 246/AWWA C503
Nozzle Standard	NFPA 1963
Monitor Flange	Size 4"- ANSI Class125/150
Pipe Flange	Size 6"- ANSI Class125 / 150 or BS EN1092-2 PN10/PN16
Working Pressure	250 PSI

Model Options:

Model No.	Hose Nozzle	Pumper Nozzle	Monitor Flange	Pipe Flange
WH68-2525-45-00	2 * 2.5"	4.5"	NA	6"
WH68-2525-45-40	2 * 2.5"	4.5"	4"	6"
WH68-2525-40-00	2 * 2.5"	4"	NA	6"
WH68-2525-40-40	2 * 2.5"	4"	4"	6"
WH68-2525-00-00	2 * 2.5"	NA	NA	6"
WH68-2525-00-40	2 * 2.5"	NA	4"	6"
WH68-0025-45-00	1 * 2.5"	4.5"	NA	6"
WH68-0025-45-40	1 * 2.5"	4.5"	4"	6"
WH68-0025-40-00	1 * 2.5"	4"	NA	6"
WH68-0025-40-40	1 * 2.5"	4"	4"	6"

FLANGE CODE	CLASS ANSI 125 → A	CLASS ANSI 150 → B	CLASS PN10 → C	CLASS PN16 → D

ORDER KEY	MODEL ↓	HOSE NOZZLE ↓	PUMPER NOZZLE ↓	MONITOR FLANGE ↓	PIPE FLANGE CODE ↓
	WH68-	XXXX-	XX-	XX-	X