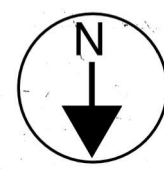


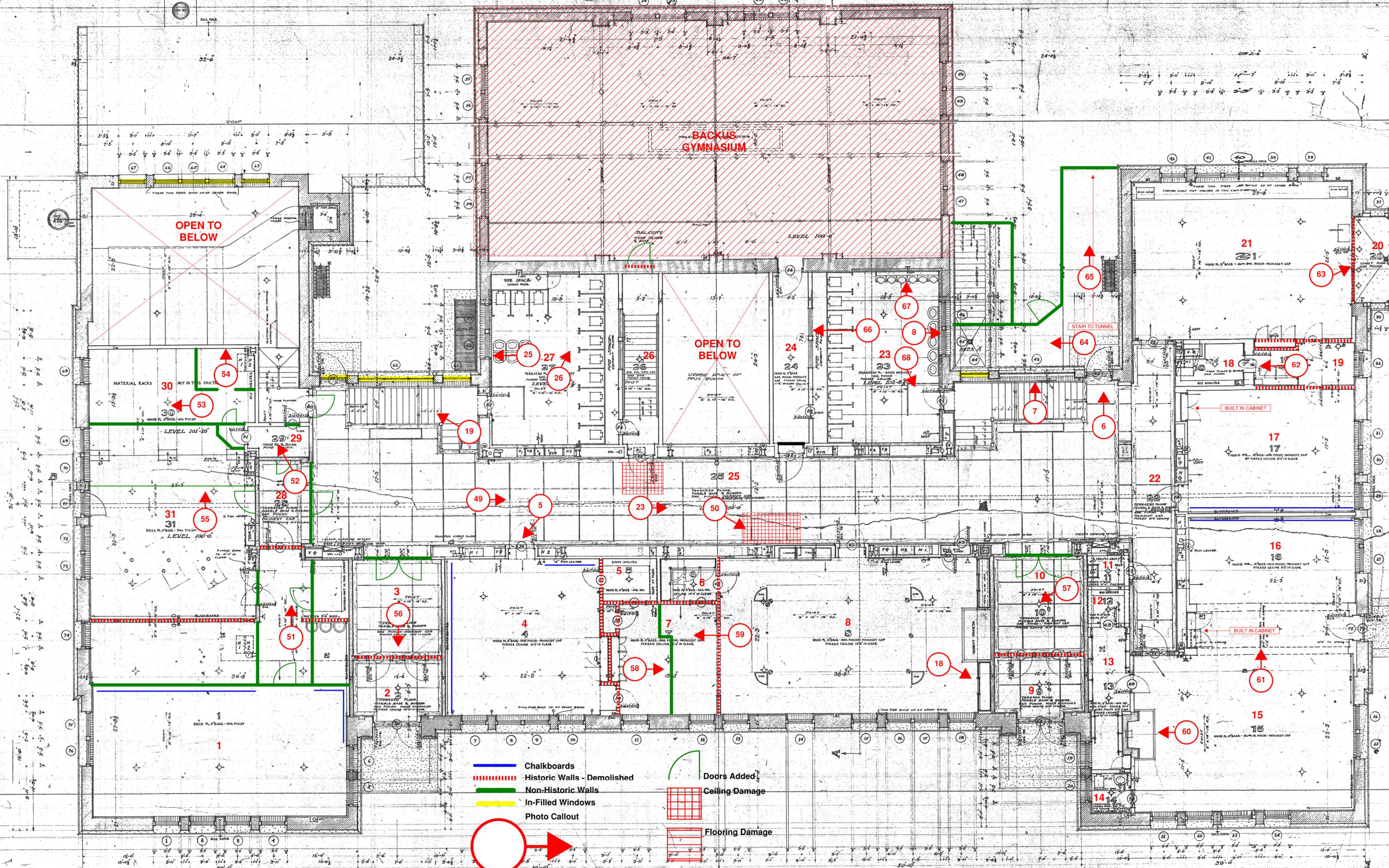
BASEMENT PLAN

- Chalkboards
- ▬▬▬▬▬▬ Historic Walls - Demolished
- ▬▬▬▬▬▬ Non-Historic Walls
- ▬▬▬▬▬▬ In-Filled Windows
- → Photo Callout
- ⤴ Doors Added
- ▬▬▬▬▬▬ Ceiling Damage
- ▬▬▬▬▬▬ Flooring Damage



ELECTRICAL SYMBOLS
 CONDUIT FOR LIGHT & POWER
 TEL. & SIGNAL
 CABINET
 CEILING OUTLET
 BRACKET
 PLUG RECEPTACLE
 WALL SWITCH
 TELEPHONE
 BELL
 FLOOR BELL

PROPERTY OF
 PACKARD-ALLEN CO. FORT COLE
 1508 N. 1ST ST. DENVER, CO. 80202



SCHEDULE OF ROOMS

1. MATERIAL RACKS	2. YESTERDAY'S YESTERDAY	3. COLLECTOR	4. STAIRS TO GYMNASIUM
5. YESTERDAY'S YESTERDAY	6. YESTERDAY'S YESTERDAY	7. COLLECTOR	8. COLLECTOR
9. YESTERDAY'S YESTERDAY	10. YESTERDAY'S YESTERDAY	11. COLLECTOR	12. COLLECTOR
13. YESTERDAY'S YESTERDAY	14. YESTERDAY'S YESTERDAY	15. COLLECTOR	16. COLLECTOR
17. YESTERDAY'S YESTERDAY	18. YESTERDAY'S YESTERDAY	19. COLLECTOR	20. COLLECTOR
21. YESTERDAY'S YESTERDAY	22. YESTERDAY'S YESTERDAY	23. COLLECTOR	24. COLLECTOR
25. YESTERDAY'S YESTERDAY	26. YESTERDAY'S YESTERDAY	27. COLLECTOR	28. COLLECTOR
29. YESTERDAY'S YESTERDAY	30. YESTERDAY'S YESTERDAY	31. COLLECTOR	32. COLLECTOR
33. YESTERDAY'S YESTERDAY	34. YESTERDAY'S YESTERDAY	35. COLLECTOR	36. COLLECTOR
37. YESTERDAY'S YESTERDAY	38. YESTERDAY'S YESTERDAY	39. COLLECTOR	40. COLLECTOR
41. YESTERDAY'S YESTERDAY	42. YESTERDAY'S YESTERDAY	43. COLLECTOR	44. COLLECTOR
45. YESTERDAY'S YESTERDAY	46. YESTERDAY'S YESTERDAY	47. COLLECTOR	48. COLLECTOR
49. YESTERDAY'S YESTERDAY	50. YESTERDAY'S YESTERDAY	51. COLLECTOR	52. COLLECTOR
53. YESTERDAY'S YESTERDAY	54. YESTERDAY'S YESTERDAY	55. COLLECTOR	56. COLLECTOR
57. YESTERDAY'S YESTERDAY	58. YESTERDAY'S YESTERDAY	59. COLLECTOR	60. COLLECTOR
61. YESTERDAY'S YESTERDAY	62. YESTERDAY'S YESTERDAY	63. COLLECTOR	64. COLLECTOR
65. YESTERDAY'S YESTERDAY	66. YESTERDAY'S YESTERDAY	67. COLLECTOR	68. COLLECTOR

GROUND LEVEL PLAN



KEY TO MATERIALS

WOOD PL. BASE - 1/2" x 1/2" x 1/2" x 1/2"	WOOD PL. BASE - 1/2" x 1/2" x 1/2" x 1/2"
WOOD PL. BASE - 1/2" x 1/2" x 1/2" x 1/2"	WOOD PL. BASE - 1/2" x 1/2" x 1/2" x 1/2"
WOOD PL. BASE - 1/2" x 1/2" x 1/2" x 1/2"	WOOD PL. BASE - 1/2" x 1/2" x 1/2" x 1/2"

GROUND FLOOR PLAN

SCALE: 1/8" = 1'-0"

DRAWN BY: [Name]

CHECKED BY: [Name]

APPROVED BY: [Name]

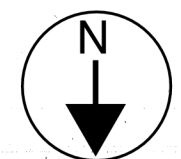
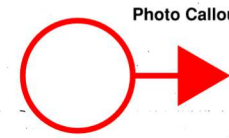
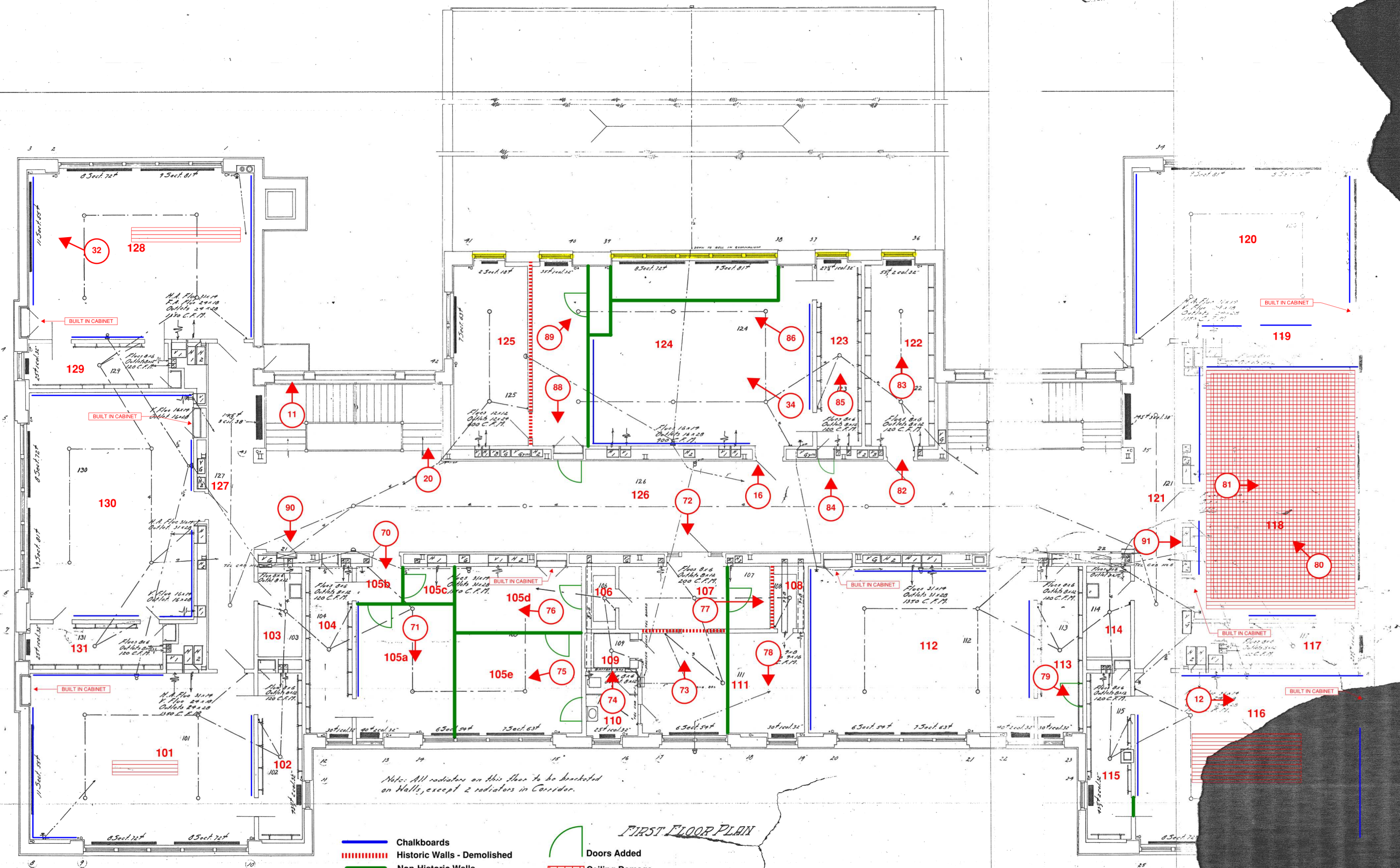
DATE: [Date]

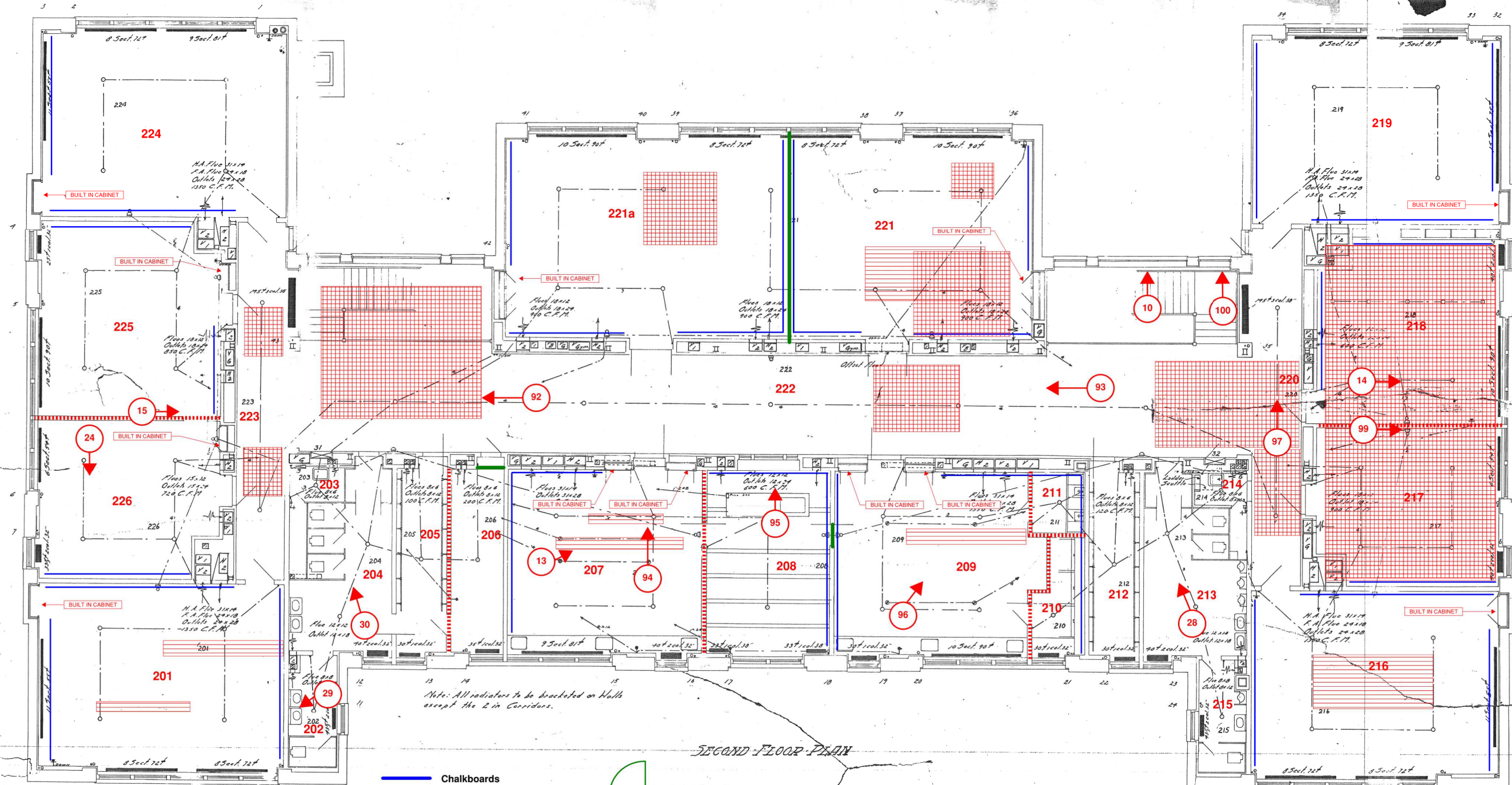
HIGH SCHOOL
INTERNATIONAL FALLS
MINNESOTA

BELL, TYRRE & CHAPMAN
ARCHITECTS





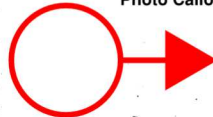



Auditorium Bldg., Minneapolis, Minn.

SHEET 102



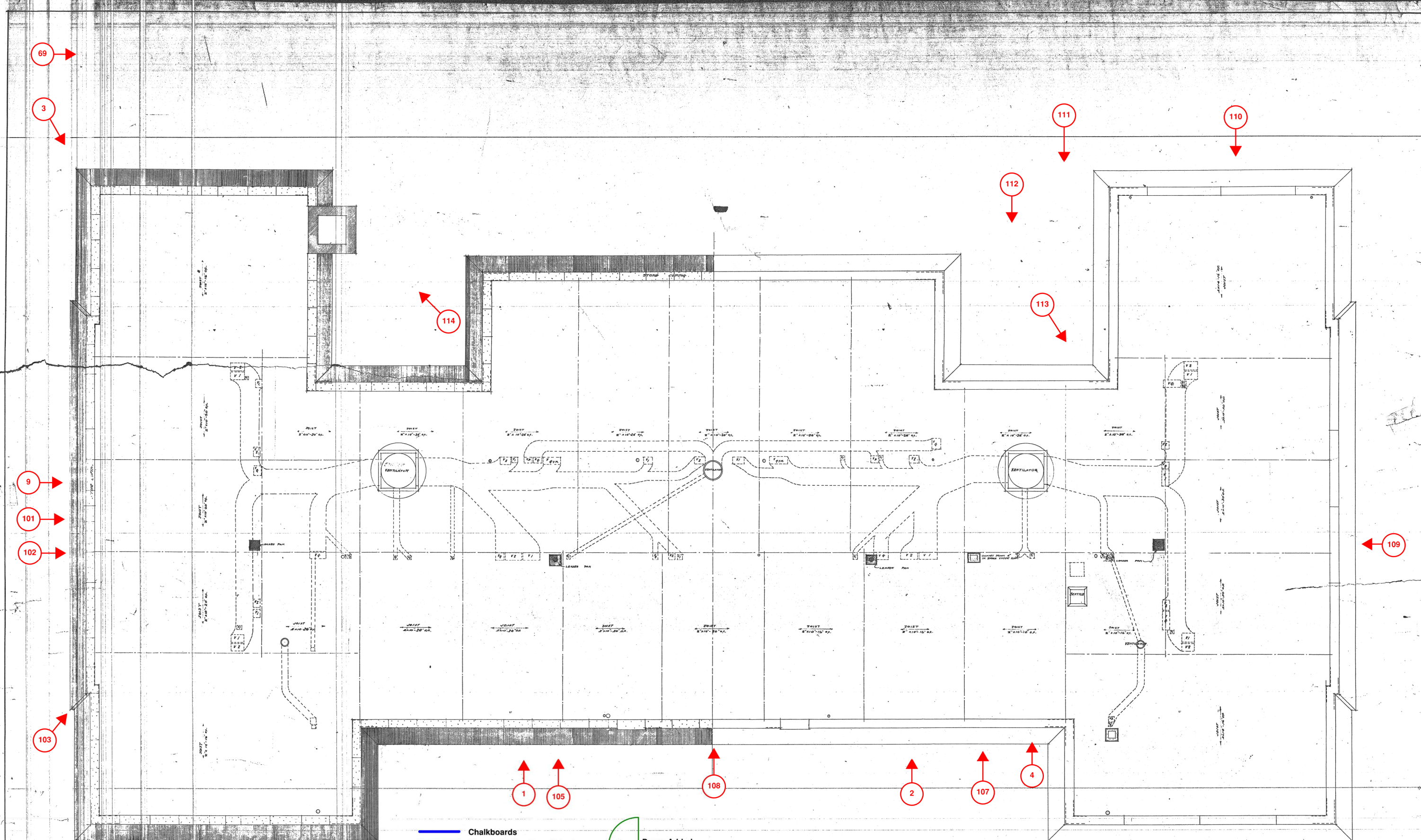


SECOND FLOOR PLAN

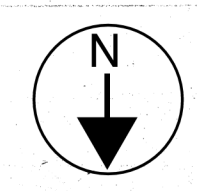
-  Chalkboards
-  Historic Walls - Demolished
-  Non-Historic Walls
-  In-Filled Windows
-  Photo Callout
-  Doors Added
-  Ceiling Damage
-  Flooring Damage



CHAS...
 HEATING VENTIL...
 SCALE:
 DRAWN
 TRACED
 CHECKED
 APP'D/RJK
 DATE 2-1-77



- Chalkboards
- ▬▬▬▬▬▬ Historic Walls - Demolished
- ▬▬▬▬▬▬ Non-Historic Walls
- ▬▬▬▬▬▬ In-Filled Windows
- Photo Callout
- ┌───┐ Doors Added
- Ceiling Damage
- Flooring Damage



ROOF PLAN
 HIGH SCHOOL
 INTERNATIONAL FALLS
 MINNESOTA
 BELL, TYRRE & CHAPMAN
 ARCHITECTS
 Auditorium Bldg., Minneapolis, Minn.

SCALE: 1/4" = 1'-0"
 DRAWN: L.C.
 TRACED: L.C.
 CHECKED BY:
 APPROVED BY:
 DATE: 10-22-21

BLDG 101
 SHEET
105
 SET