

Partnership for Gulf Coast Land Conservation

Strategic Conservation Vision Tool

User Tutorial

The purpose of this tutorial is to help users navigate the Partnership for Gulf Coast Land Conservation's Strategic Conservation Vision Tool. Users are able to explore and download summary information about Conservation Vision tiers within county boundaries, or by drawing or importing their own area of interest.

Getting Started:

To successfully use this tool please make sure your computer is connected to the internet and then navigate to the web URL using any web browser. Once you navigate to the tool application the home screen and intended use disclaimer should appear as in Figure 1 below. Please read through the information and disclaimer language before proceeding to the tool.

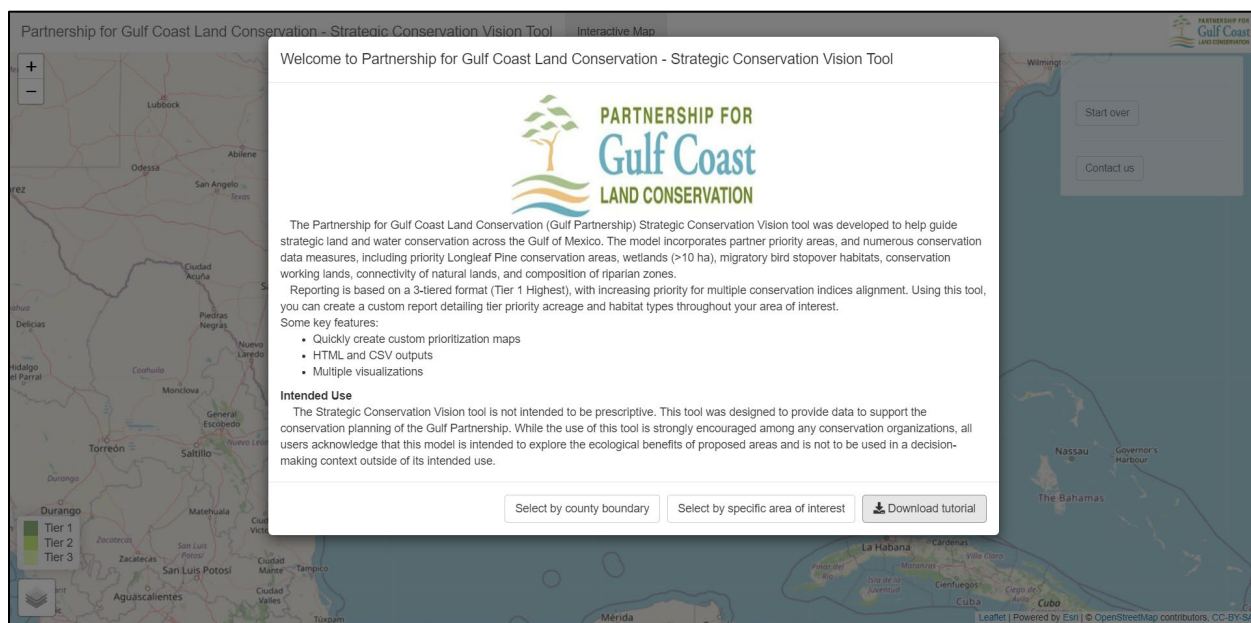


Figure 1. Home Screen of Strategic Conservation Vision Tool.

Selecting you Area of Interest:

To begin exploration of the tool, choose either the 'Select by county boundary' button or the 'Select by specific area of interest' from the tool home screen.

❖ Selecting by County Boundary

Once you choose to select by county boundary, you will be taken to a map with existing county outlines. You can select only one county for analysis within the Gulf Coast Region for evaluation

of Conservation Vision tiers. Hover over the outlined areas to select your desired county as shown in Figure 2 below. Once selected, the county will be shaded in blue. You can deselect counties by clicking on them. When finished selecting county boundary click “Go to Analysis” on the upper right menu screen. Note that you can also select by a county name in the upper right-hand screen by choosing the drop down under County Selection Options.

You can change the underlying basemap to aerial imagery and/or toggle on/off the Vision tiers by using the stacked box icon on the bottom left corner of the screen.

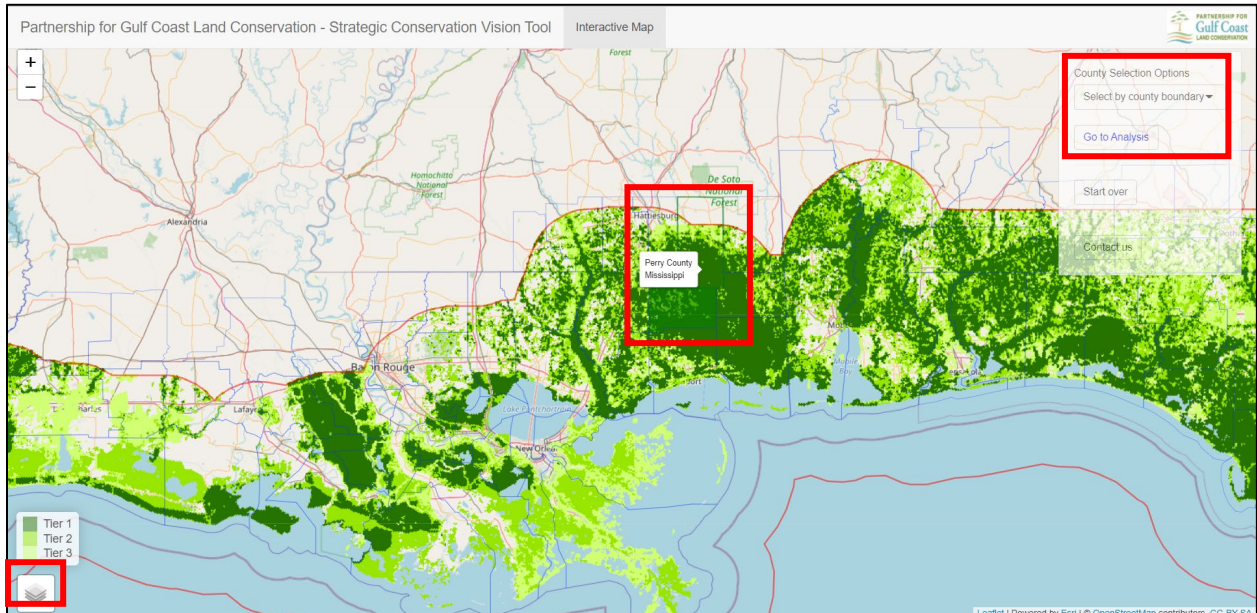


Figure 2. Selecting your county or counties of interest for evaluation.

❖ Drawing an Area of Interest

You may hand-draw polygons representing your area of interest by choosing “Select by specific area of interest” on the tool home screen. You will be taken to a map of the vision tiers. First zoom in to your area of interest. Next, click the black hexagon button on the upper left of the screen to enable drawing (Figure 3 below). Then you can click on the map to draw your desired polygon area. Complete the polygon by clicking back on the initial point. You can make corrections to your area of interest by clicking the edit button directly below the drawing button. You can also use delete last point, clear all, and the trash can functions to adjust or remove the drawn polygon. When finished drawing/editing your area of interest polygon, name your area of interest and click “Go to Analysis” on the upper right menu screen.

Note, you can create multi-part polygons for assessment as a single area of interest. You can also change the underlying basemap to aerial imagery and/or toggle on/off the Vision tiers by using the stacked box icon on the bottom left corner of the screen.

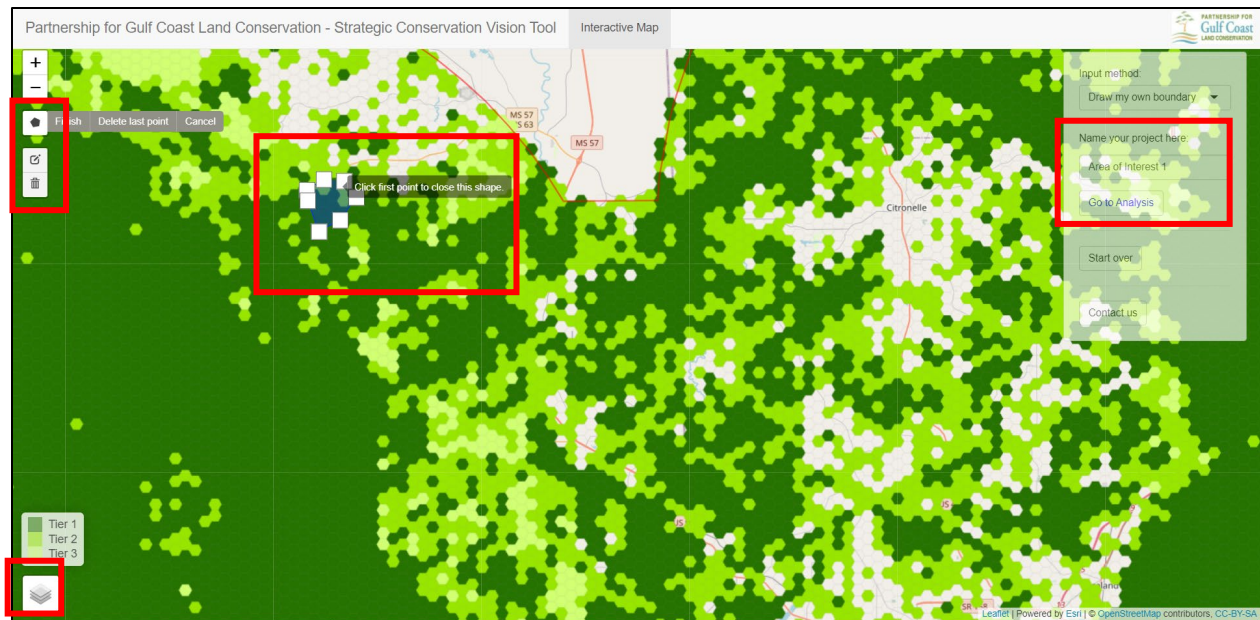


Figure 3. Drawing your area of interest for evaluation.

❖ Importing a Shapefile

You may import a zipped shapefile representing your area of interest by choosing “Select by specific area of interest” on the tool home screen. You will be taken to a map of the vision tiers. On the upper right hand screen window change input method to “Import shapefile” using the drop-down arrow. Note, all shapefile components must be zipped into a single zipped folder for upload. Polygon features only can be imported to the tool (lines, polylines, and points are not allowed). Shapefiles containing multiple polygon features or multi-part features will be considered a single area of interest in the analysis.

Browse to your zipped shapefile location, select the zipped file, and click “Open” (Figure 4). If properly formatted your shapefile will automatically load into the program and your map will zoom to the area of interest (Figure 5). Note, you cannot edit the polygon shape if imported from a zipped shapefile. You also cannot rename your project area. It will default to the name given in the shapefile or the name “area of interest 1”. When finished importing your area of interest polygon click “Go to Analysis” on the upper right menu screen.

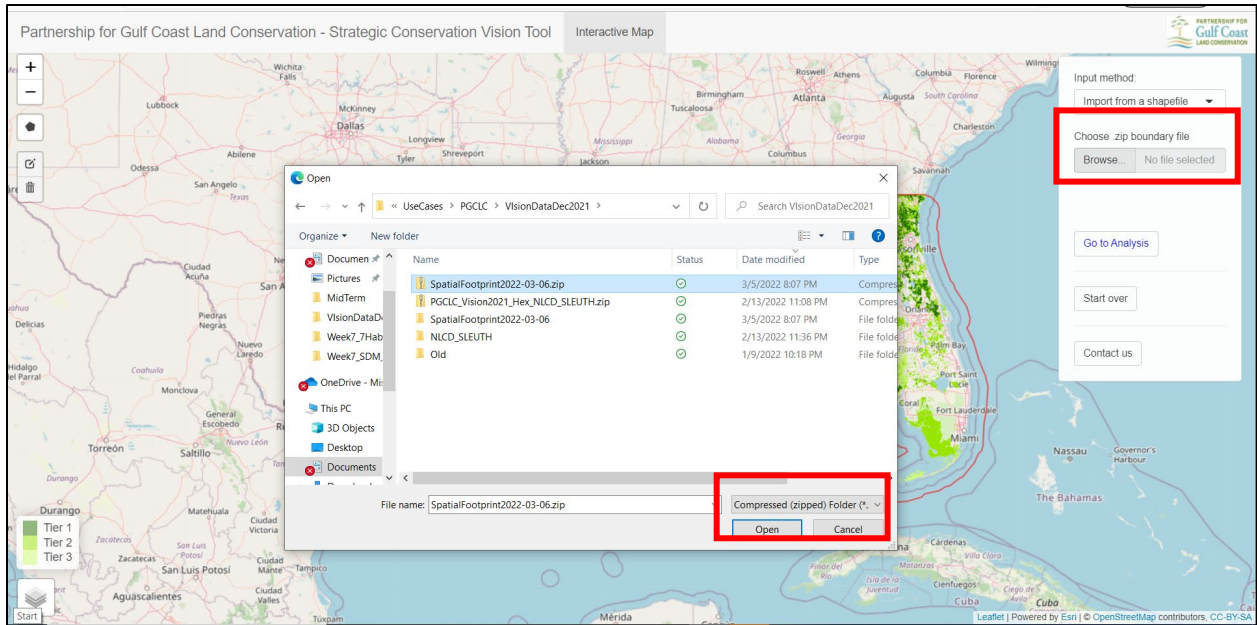


Figure 4. Navigating to your zipped shapefile for importing into the tool.

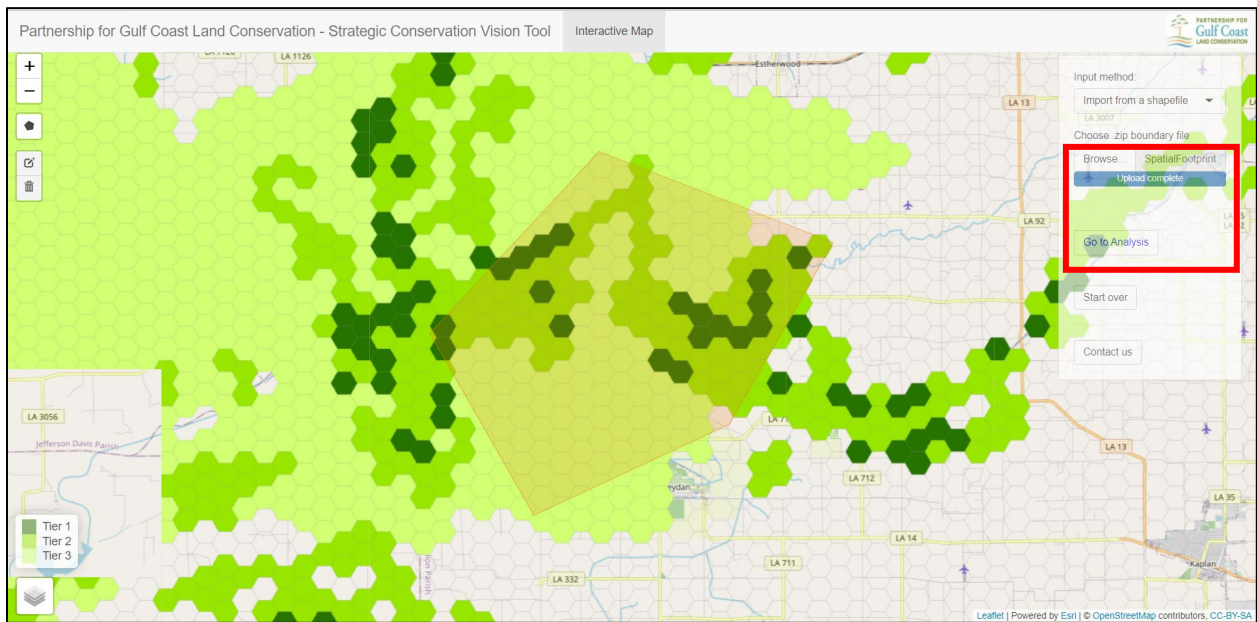


Figure 5. Example of imported area of interest from a shapefile in the tool.

Exploring and Downloading Results:

Once you have selected or imported your area of interest and click “Go to Analysis” you will be automatically taken to a results tab where summary information is available.

On the results page you will see a bar chart summarizing the percent of your area of interest in each of the Vision tiers (Tier 1-3). Note “other” indicates the area not presently prioritized by the Conservation

Vision. You will also find an acreage summary of each tier category. You will also find a pie-chart summarizing land cover categories within your area of interest on the bottom of this report page.

Users may also download a custom report by clicking the “Download report” button in the upper right-hand portion of the screen (Figure 6).

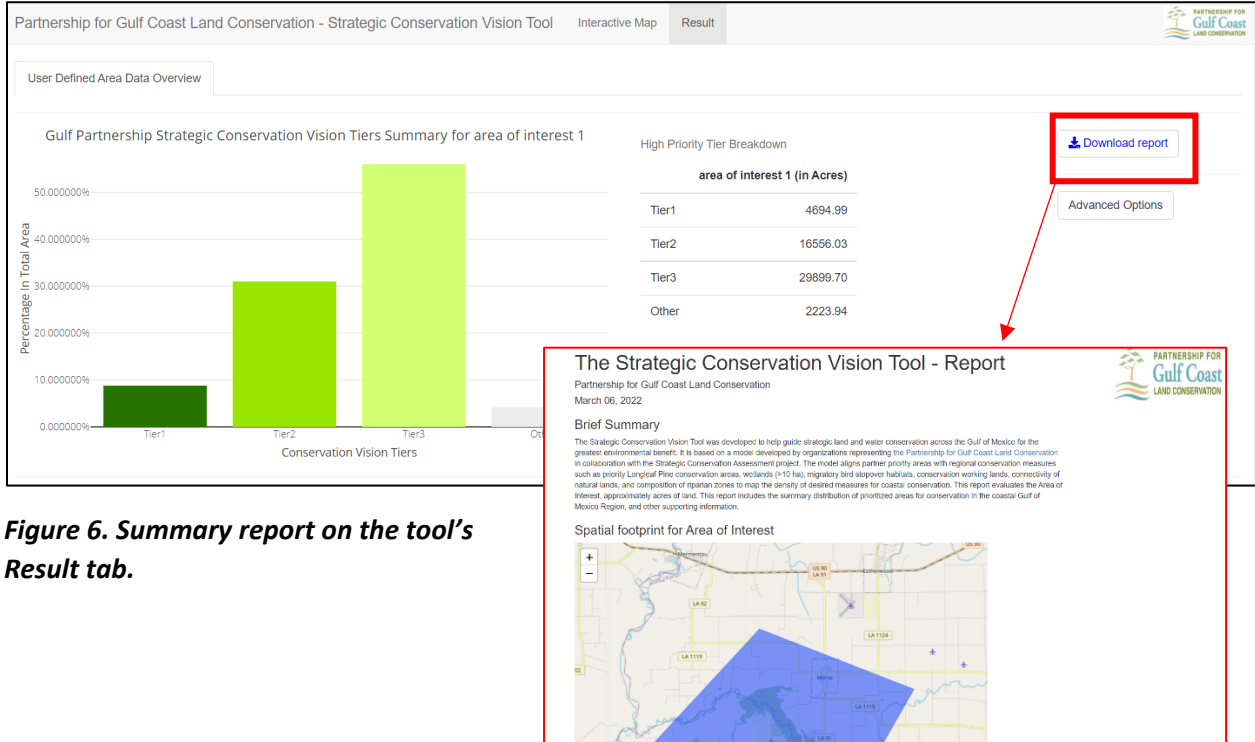


Figure 6. Summary report on the tool’s Result tab.

Advanced Features:

You may navigate to some advance options in the reporting by clicking on “Advanced Options” on the right-hand side of the screen (Figure 7).

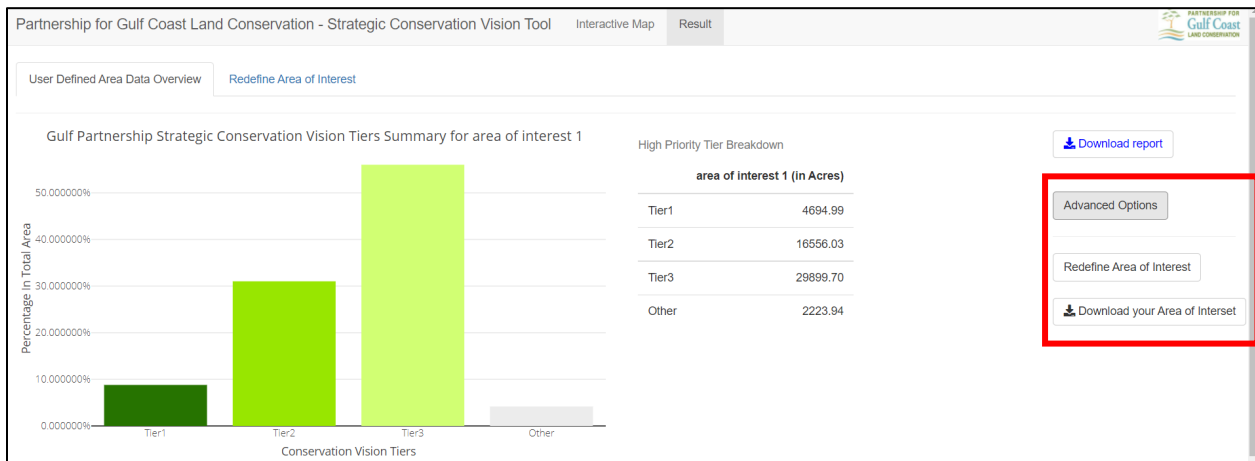


Figure 7. Navigating to the Advanced Options on the Result tab.

❖ Download drawn areas of interest

You may download drawn areas of interest as a zipped shapefile by clicking on the “Download your Area of Interest” button under the Advanced Options button (Figure 8). This will produce a zipped shapefile that automatically downloads to your default download folder. Navigate to your downloads folder to retrieve and unzip your new shapefile for use in other applications.

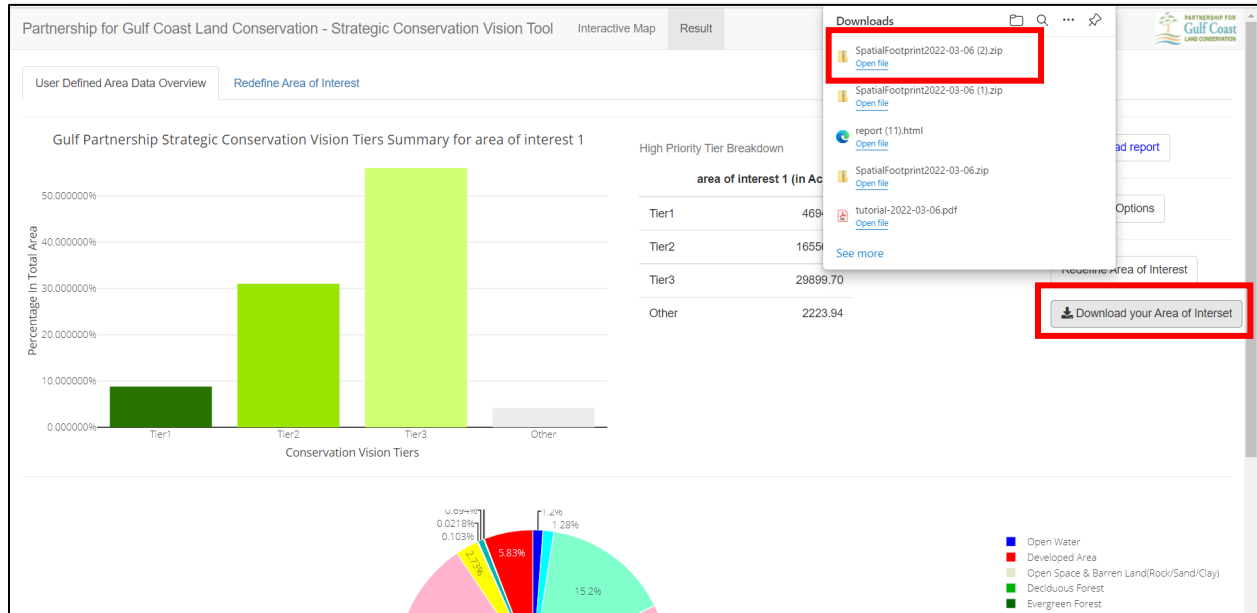


Figure 8. Downloading a zipped shapefile from drawn areas of interest.

❖ Redefine area of interest

You may redefine your areas of interest by de-selecting hexagons by first clicking on the “Redefine area of interest” button under the Advanced Options button. Once selected a new window will appear with your mapped area. Click the stacked layer button on the upper right-hand corner of the map screen and select “View Hexagons” (Figure 9). Next click on hexagons to de-select from the area of interest (Figure 10). Once complete click “Finalize changes to area of interest” and your results will automatically update.

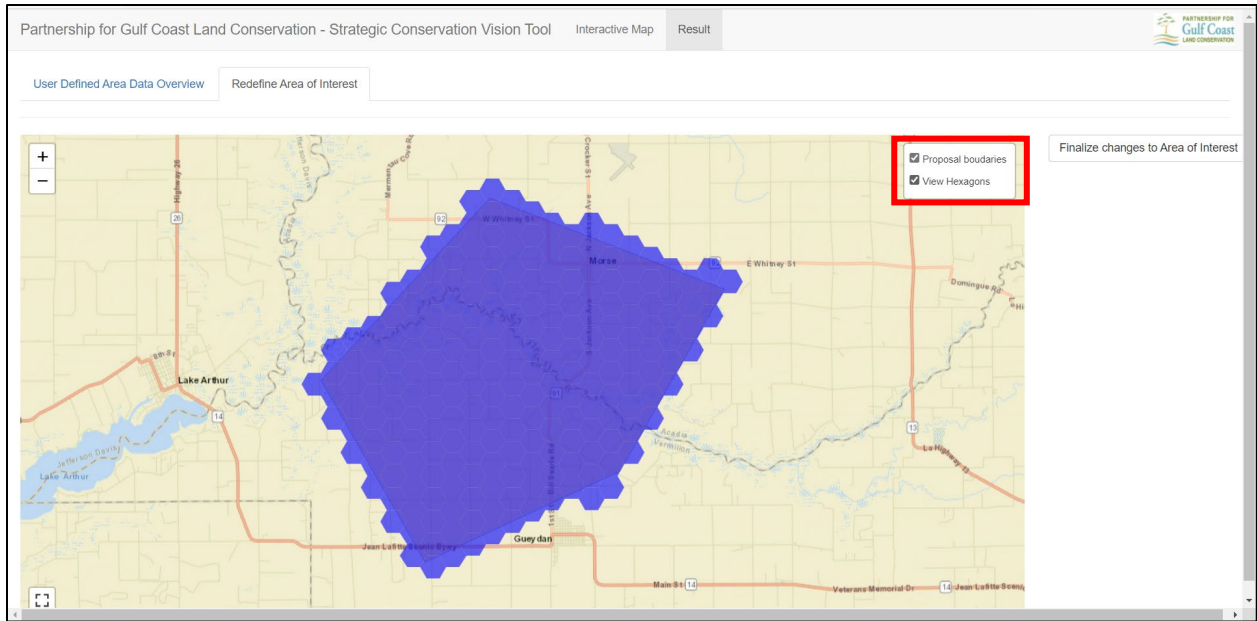


Figure 9. Navigating to the redefine areas of interest under Advanced Options in the tool.

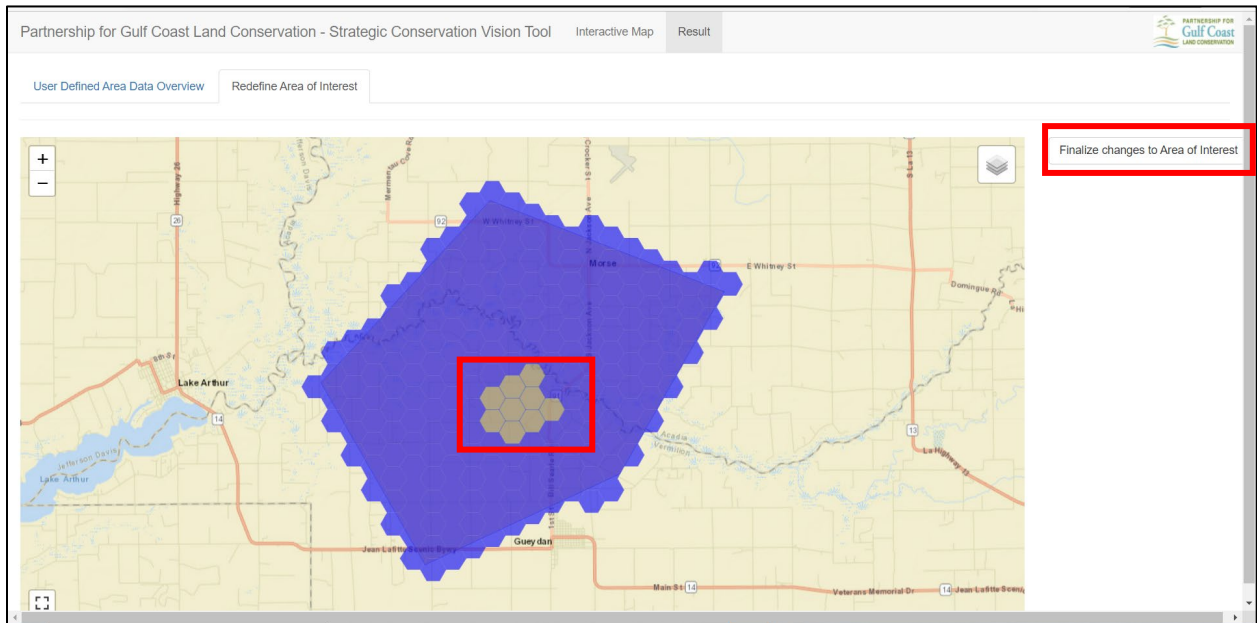


Figure 10. De-selection of hexagons within the defined area of interest.