



FRIENDS of CERT
SUPPORT TRAILER REPLACEMENT
CAPITAL CAMPAIGN
JUNE 20, 2023

Mailing Address:
P.O. Box 80
Appleton, WI 54912

Board of Directors

Gene Reece
Chairperson
(920) 585-0994

Gerald Loos
Vice Chairperson
(920) 733-6779

John Gollner
Treasurer

Jolene Van Thiel
Secretary
(920) 475-1363

Karl Held
Director
(262) 227-7120

Kurt Eggebrecht
Director
(920) 810-5321

Dr. Thomas Mace
Director

Paula Rieder
Ex Officio
Outagamie County
Emergency Management

Established in 2018, Friends of Outagamie Community Emergency Response Team (FOCERT, Inc) a Wisconsin recognized 501c(3), was organized for the charitable purpose of supporting and promoting the needs of the Community Emergency Response Team. CERT is a volunteer program activated and managed by Outagamie County Emergency Management.

CERT volunteers are trained through comprehensive 21-hour FEMA based curriculum and hands-on exercises. The Team responds to a wide variety of emergency situations as detailed in the enclosed brochure. The most requested need for CERT volunteers is to provide quality rehabilitation services (Rehab) along with a safe and secure resting area for emergency response personnel. Although based in Outagamie County, volunteers can respond anywhere in Wisconsin with emergency management agencies working together. *Much more information is provided in this packet.*

Here's why we need your help: Initially utilizing a decommissioned ambulance provided via a partnership with the Outagamie County Housing Authority, a larger truck and response trailer was donated by the City of Appleton Fire Department in 2016. This setup has met our needs, until now. In 2021, a successful capital campaign was conducted to upgrade our tow vehicle from a 1996 truck to a 2023 Ford F350 4-wheel drive truck. We now need to update our support trailer to provide a more efficient and safer unit for our CERT volunteers and the emergency responders we serve. FOCERT is embarking on a Capital Campaign beginning in June 2023 to raise approximately \$135,000 to purchase a new, safe, efficient support trailer for the storage and response of our equipment.

Here's how you can help: We would appreciate the opportunity to talk with you more about this project in person. Or if we have captured your interest and you or your company would prefer to send an immediate donation, please use the above address.

Our motto is *"Neighbors Helping Neighbors"*.
For additional information please contact any of the FOCERT board listed to the left. We look forward to hearing from you!

Best Regards,
Gene Reece
Chairperson
Friends of CERT



The Mission of the Friends of CERT is to provide financial support to further the efforts of the Outagamie County CERT volunteer program in their quest to enhance individual and family emergency preparedness, provide quality rehabilitation services for emergency response personnel after disasters, and during extended emergencies in Outagamie County and other counties as requested.

Federal Tax I.D. # 36-4895357



FRIENDS of CERT
SUPPORT TRAILER REPLACEMENT
CAPITAL CAMPAIGN
JUNE 20, 2023

Mailing Address:
P.O. Box 801
Appleton, WI 54912

Board of Directors

Gene Reece
Chairperson
(920) 585-0994

Gerald Loos
Vice Chairperson
(920) 733-6779

John Gollner
Treasurer
(920) 410-4251

Jolene Van Thiel
Secretary
(920) 475-1363

Karl Held
Director
(262) 227-7120

Kurt Eggebrecht
Director
(920) 810-5321

Dr. Thomas Mace
Director
(661) 300-1585

Paula Van De Leygraaf
Ex Officio
Director Outagamie County
Emergency Management

Established in 2018, Friends of Outagamie Community Emergency Response Team (FOCERT, Inc) a Wisconsin recognized 501c(3), was organized for the charitable purpose of supporting and promoting the needs of the Community Emergency Response Team. CERT is a volunteer program activated and managed by Outagamie County Emergency Management.

CERT volunteers are trained through comprehensive 21-hour FEMA based curriculum and hands-on exercises. The Team responds to a wide variety of emergency situations as detailed in the enclosed brochure. The most requested need for CERT volunteers is to provide quality rehabilitation services (Rehab) along with a safe and secure resting area for emergency response personnel. Although based in Outagamie County, volunteers can respond anywhere in Wisconsin with emergency management agencies working together. *Much more information is provided in this packet.*

Here's why we need your help: Initially utilizing a decommissioned ambulance provided via a partnership with the Outagamie County Housing Authority, a larger truck and response trailer was donated by the City of Appleton Fire Department in 2016. This setup has met our needs, until now. In 2021, a successful capital campaign was conducted to upgrade our tow vehicle from a 1996 truck to a 2023 Ford F350 4-wheel drive truck. We now need to update our support trailer to provide a more efficient and safer unit for our CERT volunteers and the emergency responders we serve. FOCERT is embarking on a Capital Campaign beginning in June 2023 to raise approximately \$135,000 to purchase a new, safe, efficient support trailer for the storage and response of our equipment.

Here's how you can help: We would appreciate the opportunity to talk with you more about this project in person. Or if we have captured your interest and you or your company would prefer to send an immediate donation, please use the above address.

Our motto is *"Neighbors Helping Neighbors"*.
For additional information please contact any of the FOCERT board listed to the left. We look forward to hearing from you!

Best Regards,
Gene Reece
Chairperson
Friends of CERT



The Mission of the Friends of CERT is to provide financial support to further the efforts of the Outagamie County CERT volunteer program in their quest to enhance individual and family emergency preparedness, provide quality rehabilitation services for emergency response personnel after disasters, and during extended emergencies in Outagamie County and other counties as requested.

Federal Tax I.D. # 36-4895357



WHAT IS CERT?

Following the tragic events that occurred on September 11, 2001, state and local government officials across the nation, increased opportunities for citizens to become volunteers and play integral roles in supporting emergency responders.

In January 2002, the President of the United States George W. Bush launched the Citizen Corps volunteer program to capture the spirit of service that emerged throughout our communities following the terrorist attacks.

In 2005, Wisconsin became a part of the nationally recognized Citizen Corps with several regions established throughout the state. Originally our Citizen Corp area was regional, however, local emergency managers decided that it would be in the best interest of our communities to provide coverage on a more local basis. That is how CERT was born in Outagamie County, Wisconsin.



CONTACT US:

Friends of CERT

Mailing Address: P.O. Box 801
Appleton, WI 54912

Email:
outagamiefocert@gmail.com

Look for us on Facebook

Friends of CERT



Friends of CERT, Inc.

FRIENDS of COMMUNITY EMERGENCY RESPONSE TEAM



SUPPORTING OUR LOCAL CERT VOLUNTEERS

Neighbors Helping Neighbors
in Emergency Situations

CERT VOLUNTEERS

Locally, CERT volunteers function under the direction of Outagamie County Emergency Management. Listed below are just a few of the valuable services CERT volunteers are trained to provide:

- Provide rehydration, nourishment and rest (rehab) for firefighters and other responders at emergency scenes such as fires, chemical spills, accident reconstruction, post storms, floods, and shelters
- Distribute weather radios to high risk residents at low or no cost
- Triage large scale disaster events and assist in providing first aid and accountability
- Storm damage assessment/clean-up
- Assist Red Cross and other relief organizations with mass care operations
- Search for missing persons
- Provide emergency preparedness materials for families and individuals at community outreach and safety events



WHAT IS FRIENDS OF CERT?

FOCERT is a 501c3, Wisconsin based tax-exempt, not-for-profit charitable organization managed by a seven member board of directors and a county ex-officio

The mission of the Friends of CERT is to provide financial support to further the efforts of the Outagamie County CERT volunteer program in their quest to enhance individual and family emergency preparedness, provide quality rehabilitation services for emergency response personnel during disasters, and during extended emergencies in Outagamie County and other counties as requested.

HERE'S HOW YOU CAN HELP

CASH GIFTS AND GRANTS

To provide:

- Essential and relevant, basic and advanced training to support ever changing volunteer activities
- Personal Protection Equipment for volunteers
- Fire scene decontamination equipment to meet new safety standards
- Easy up heating/cooling tent
- Specialized cooling chairs
- Preparedness and safety informational materials for the public
- Upgraded, modernized response rig - truck & trailer

IN-KIND SERVICES & SUPPLIES

- Truck & trailer maintenance and major repairs
- Printing services for outreach
- Gift cards to purchase quality protein bars, rehydration drinks, first-aid, fuel, and cleaning supplies.

CERT rig and trailer:



Fire Extinguisher training:



CERT participating in a parade:



For more information please contact:

Paula Van De Leygraaf
CERT Coordinator
Director, Outagamie County
Emergency Management
320 S. Walnut Street
Appleton, WI 54911
Phone: (920) 832-6361
Paula.vandelaygraaf@outagamie.org

Robert C. Olson
Emergency Management Specialist
Outagamie County
(920) 832-5464
Robert.olson@outagamie.org

facebook.com/OutagamieCountyCERT



“Doing the greatest good for the greatest amount of people.”

Managed by:



The Community Emergency Response Team (CERT) Program educates people about disaster preparedness for hazards that may impact their area and trains them in basic disaster response skills, such as fire safety, light search and rescue, team organization, and disaster medical operations. Using the training learned in the classroom and during exercises, CERT members can assist others in their neighborhood or workplace following an event when professional responders are not immediately available to help. CERT members also are encouraged to support emergency response agencies by taking a more active role in emergency preparedness projects in their community.



CERT CPR Training



CERT Outreach Event

The mission of the CERT Rehab Team is to provide quality rehabilitation services along with a safe and secure resting area for all emergency response personnel throughout Outagamie County for extended emergency situations. This includes providing food and fluid replenishment, rest for worn out emergency personnel, and emotional support.

CERT Rehab is designed to assist and support emergency responders during long duration events, events occurring in inclement weather or events that may last for multiple days. Early notification is critical in the team's ability to properly fulfill their mission. Travel distance and time will affect response and arrival time.

Rehab Services: Rehab strives to provide the highest level of quality services possible to any fire, rescue, law enforcement, medical, and HAZMAT agency throughout Outagamie County. NFPA Standard 1584 is the cornerstone document driving the Rehab Service. There are nine key components of Rehab required by NFPA 1584. Of the nine, CERT-Rehab will attempt to do the following six components:

1. Relief from climatic conditions.
2. Rest and recovery.
3. Active and passive cooling.
4. Rehydration.
5. Calorie and electrolyte replacement.
6. Member accountability.

Other Professional Personnel will handle:

7. Medical monitoring.
8. Emergency medical services.
9. Release.

Rehab is also available to support pre-planned training scenarios.

CERT Rehab on scene





"In the Spirit of Town Government"

TOWN OF BUCHANAN FIRE & RESCUE
N178 County Rd N
Appleton, WI 54915-9459

Phone: 920-734-8599
Fax: 920-730-7394
www.townofbuchanan.org

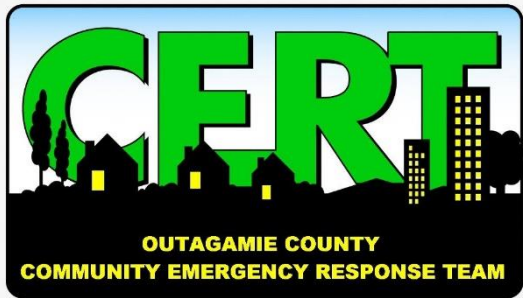
This is a letter regarding the Outagamie County CERT team and the value they provide to all Fire agencies in the county.

I cannot stress enough the importance of having the team available as needed, we as a department have used the team on several occasions in the past as well as for large responses in our area we have been involved in (large warehouse fire in Combined Locks in July of 2022).

The service they provide is invaluable when rehab is needed as well as feeding of personnel on scene and many other services the team provides while on scene. The team responds promptly and stays available for as long as needed. The volunteers on the team are both professional and very courteous and more than willing to do anything asked of them and will never shy away from doing whatever they can for everyone involved.

In my opinion, as the fire chief, I can recommend that they be used whenever the need arises without hesitation.

Ray Mohr
Fire Chief Town of Buchanan.



Origins of Community Emergency Response Teams (CERT)

By Gene Wallis

Founder – Outagamie County CERT

Edited by Cynthia Mueller, CERT Volunteer

Following the tragic events that occurred on September 11, 2001, state and local government officials across the nation, increased opportunities for citizens to become volunteers and play integral roles in supporting emergency responders. In January 2002, the President of the United States George W. Bush launched the Citizen Corps volunteer program to capture the spirit of service that emerged throughout our communities following the terrorist attacks.

Citizen Corps was created to help coordinate volunteer activities that would make our communities safer, stronger, and better prepared to respond to any emergency. It provides opportunities for people to participate in a range of measures to make their families, their homes, and their communities safer from the threats of crime, terrorism, and disasters of all kinds.

Citizen Corps is coordinated nationally by the Department of Homeland Security's Federal Emergency Management Agency. In this capacity, FEMA works closely with other federal entities, state and local governments, first responders and emergency managers, the volunteer community, and the Corporation for National & Community Service.

The Community Emergency Response Team (CERT) concept was developed and implemented by the Los Angeles City Fire Department (LAFD) in 1985. The Whittier Narrows earthquake in 1987 underscored the area-wide threat of a major disaster in California. Further, it confirmed the need for training civilians to meet their immediate needs. As a result, the LAFD created the Disaster Preparedness Division with the purpose of training citizens, private and government employees.

The training program that LAFD initiated makes good sense and furthers the process of citizens understanding their responsibility in preparing for disaster. It also increases their ability to safely help themselves, their family and their neighbors. The Federal Emergency Management Agency (FEMA) recognizes the importance of preparing citizens. The Emergency Management Institute (EMI) and the National Fire Academy adopted and expanded the CERT materials believing them applicable to all hazards.

OUTAGAMIE COUNTY CERT

In 2005, Wisconsin became a part of the nationally recognized Citizen Corps with several regions established throughout the state. Originally our Citizen Corp area was regional, however, local emergency managers decided that it would be in the best interest of our communities to provide coverage on a more local basis. That is how CERT was born for Outagamie County.

The Outagamie County CERT functions under the guidance and umbrella of Outagamie County Emergency Management. CERT has historically been funded through the Emergency Management budget for operating supplies and vehicle maintenance. CERT volunteers assisted have assisted with fundraiser raffle since 2016.

Originally, the CERT program obtained a decommissioned ambulance through a partnership sponsored by the Outagamie County Housing Authority. In 2016, a larger vehicle, a truck and emergency response rig was donated by the City of Appleton Fire Department. This vehicle has met our current needs, however, as the program grows, we realize its limitations. An additional air supported structure is available for a variety of larger call-outs to provide heating and cooling. This inflatable tent is somewhat cumbersome, but it has helped keep many people comfortable at the large scale emergency situations.

When CERT responds on a firefighter rehab callout we have established memorandum of understanding's (MOU) in which the liability shifts from county to local coverage. With the exception of firefighter rehab all callouts need to be approved by the Emergency Management office. Our county CERT also provides valuable services to not only Outagamie County, but other counties in Wisconsin upon request.

SUPPORTING AND INVESTING IN VOLUNTEERS

The training course that CERT offers to volunteers locally, benefits any citizen who takes it. Individuals will be better prepared to respond to and cope with the aftermath of a disaster. Additionally, if a community needs to supplement its response capability after a disaster, civilians can be recruited and trained as neighborhood, business and government teams that in essence, will be auxiliary responders. These groups can provide immediate assistance to victims in their local areas, organize spontaneous volunteers who have not had the training, and collect disaster intelligence that will assist professional responders with prioritization and allocation of resources following a disaster. Since 1993 when this training was made available nationally by FEMA, communities in all 50 states including many tribal, and United States territories.

Outagamie County Emergency Management staff, along with trained CERT volunteers and a diverse group of community professionals provide annual training at the Appleton International Airport Training Center. Firefighters, police, ambulance, Red Cross, and Victim Crisis Response Team are some of the groups and people who assist with training. The class may be taken for personal enrichment, or ideally, for recruitment of active, on-call volunteers. Initially, participants go through a 30 hour course filled with hands on, realistic training that concludes with a disaster drill that takes on a real world feel. Those who complete the training and want to be active volunteers will be placed on the callout roster. There is a role for every volunteer in CERT. Continuing training and refresher courses are also offered to all CERT volunteers at no cost.

WHAT TRAINED CERT VOLUNTEERS DO:

- Firefighter Rehab - Provide rehydration, rest, protein advancement, shelter, cooling/warming, accountability
- Search for Missing Persons – Example searched for lost children in Appleton and Grand Chute
- Response to Chemical Spills for any size corporation where Hazmat is called – Example: Appleton Papers in 2017
- Accident Reconstruction Scenes – Support law enforcement officers on scene
- Door Drops - Provide important and relevant information such as emergency weather preparedness, food safety, generator safety, and information about any local meetings or classes
- Spontaneous Volunteer Management – Leadership and accountability at situations needing many emergency volunteers
- Electronic Accountability – WICAMS- Wisconsin Credentialing and Asset Management Statewide System using Salamander Live Software
- Mass Casualty Triage – Partners with Appleton International Airport for mock drills
- Mass Casualty Sheltering – Assist partner organizations set up shelters - Example 2018 Flooding in Green Bay, WI
- Outdoor Warming/Cooling Shelter – Example: Apartment fire victims 2018 Beaver Dam, Dodge Co. WI
- Storm Damage Assessment – Tornado, wind shear, flooding – in and out of the county (by request)
- Point in Time – Pillars (formerly Homeless Connections) bi-annual accountability of homeless in the Fox Valley
- Partner with Fox Valley Humane Association to provide on-scene search and containment of traumatized pets
- Partners with other Community Volunteer Organizations – including, but not limited to: American Red Cross, Salvation Army, Team Rubicon, Fox Cities Victim Crisis Response Team
- Participates and Trains in Emergency Exercises such as Operation Dark Sky, Fox Valley Technical College Safety Center Drills, Appleton International Airport Mock Disaster with Multiple Agencies
- Continuing Education and Advanced Training - **MARC** Multi-Agency Resource Center and Sheltering workshops with Red Cross, CPR/First Aid with Gold Cross EMS
- Preparing for inclusion in Outagamie Child Abduction Response Team (**CART**) – 2018 Advanced Search Training
- CERT Volunteers are on call 24 hours a day, seven days a week, and 365 days a year!

Examples of CERT being a valuable resource for the area, CERT responded to the Village of Hortonville after the tornados of August 2013 to assist in many capacities over the course of a week. The value to the community was worth \$20,000.00 in disaster fund monies to the Village.

CERT is not designed to replace any community staff, but designed to augment and support a community assisting with needs. Additionally, if a community wants to supplement its response capability after a disaster or other type of emergency or event, CERT in essence, will be auxiliary responders.

In the summer of 2018, CERT volunteers were requested to help with flood and tornado damage assessment, and helped to organize resources in Calumet County. One of the partner organizations was Team Rubicon. At the same time, other teams assisted in Fond du Lac and Portage counties with damage assessment and also worked hand in hand with the American Red Cross to distribute supplies.



Friends of CERT, Inc.

Origins of Friends of Community Emergency Response Team (FOCERT)

Now that you know about the origins of **CERT** and in particular, Outagamie County Community Emergency Response Team, the next logical question is, “what is FOCERT?”

The idea to form a vehicle to support the Outagamie County CERT program and its volunteers has been discussed for several years by its founding members, Thomas Long, Eugene Wallis, and Jim Lincoln. Finally, Friends of Community Emergency Response Team, **FOCERT** for short, became a 501c3, Wisconsin based tax-exempt, not-for-profit charitable organization in July 2018. This small, non-member organization is managed by a seven member board of directors and a county ex-officio representative.

As our logo depicts, the ***Mission of the Friends of CERT is to provide financial support to further the efforts of the Outagamie County CERT volunteer program in their quest to enhance individual and family emergency preparedness, provide quality rehabilitation services for emergency response personnel during disasters, and during extended emergencies in Outagamie County and other counties as requested.***

CERT TESTIMONIALS and THANKS

"Your team rocks and they are a great comfort and help to have on scene!"
Greenville Fire



"Thanks to all of you for everything you do. It makes an amazing difference!"
Jim Hietpas, Fire Chief
Kimberly Fire Department after the Combined Locks Warehouse Fire

"Thank you very much, you guys and gals were awesome" Dan Nabbefeld, Shiocton-Bovina Fire Chief

I became fire chief in Little Chute January 3rd, 2023. Within two months, we had two structure fires and both times at those fires we dispatched CERT! This is an excellent organization, and they supply fire departments with everything we need to stay hydrated at a fire or critical situation. This organization is a life changer!

Duane Nechodom
Little Chute - Fire Chief
MABAS Division 127

"Thank you for taking care of the First Responders, as always!"
Fox Valley Metro Police Department



*Just wanted to reach out with a BIG THANK YOU to CERT. They all went above and beyond to make sure everyone was comfortable while working to resolve the critical incident in Grand Chute last week. We all heard several times how personnel on scene appreciated all of their assistance. If you could please pass along a **THANK YOU** to everyone there. CERT was a 10 out of 10!*

Thank you -Jeff
Commander
Outagamie County Sheriff's Department



CERT provides an essential service to the community. Their efforts increase the community's preparedness and resilience to all types of emergency response. From a residential house fire, a large area search, or disaster, CERT is a critical support component for public safety agencies. Jeremy Hansen, Fire Chief Appleton

Saw one of the Firefighters from the Combined Locks warehouse fire this morning. We recognized each other. He said "Thanks for all you do. We couldn't have done it without you." He also "loved" the cooling towels. Diane Daugherty CERT Volunteer

Our firefighters appreciated the attention and rehab you provided. We are glad to have you as part of the team and a resource to our County."
Robert Van Thiel, Kimberly Fire Chief - Retired



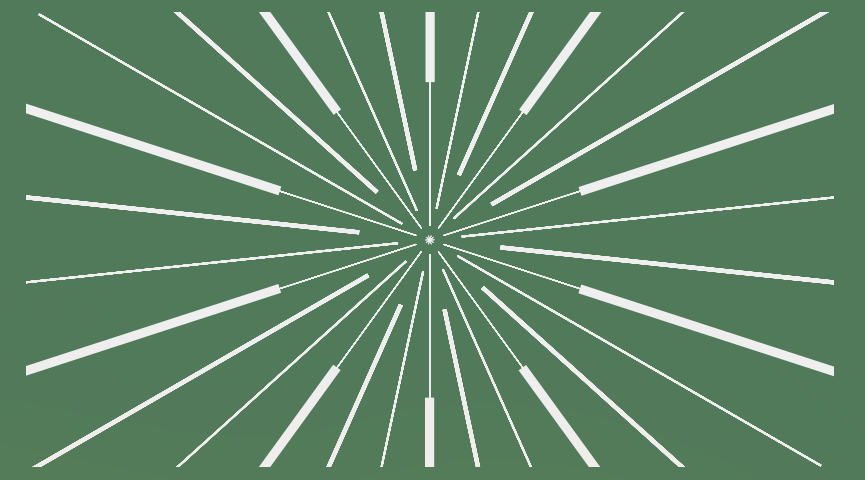
While ambulance services provide medical rehab for firefighters on extended fire scenes, the amazing volunteers from Outagamie County CERT make sure that the firefighters stay hydrated, are fed and provide a warm/cool area for the firefighters to take a time out and regroup. They check with displaced residents and are always checking to make sure everyone is okay. Outagamie County CERT is a valuable resource that volunteers don't get the credit they deserve.

Mary Greuel
Director-Seymour Rescue



"We are so fortunate in this county to have you guys rehab and feed all the firemen thank you for all you do.👍" Terry Scheller, Nichols Fire Department

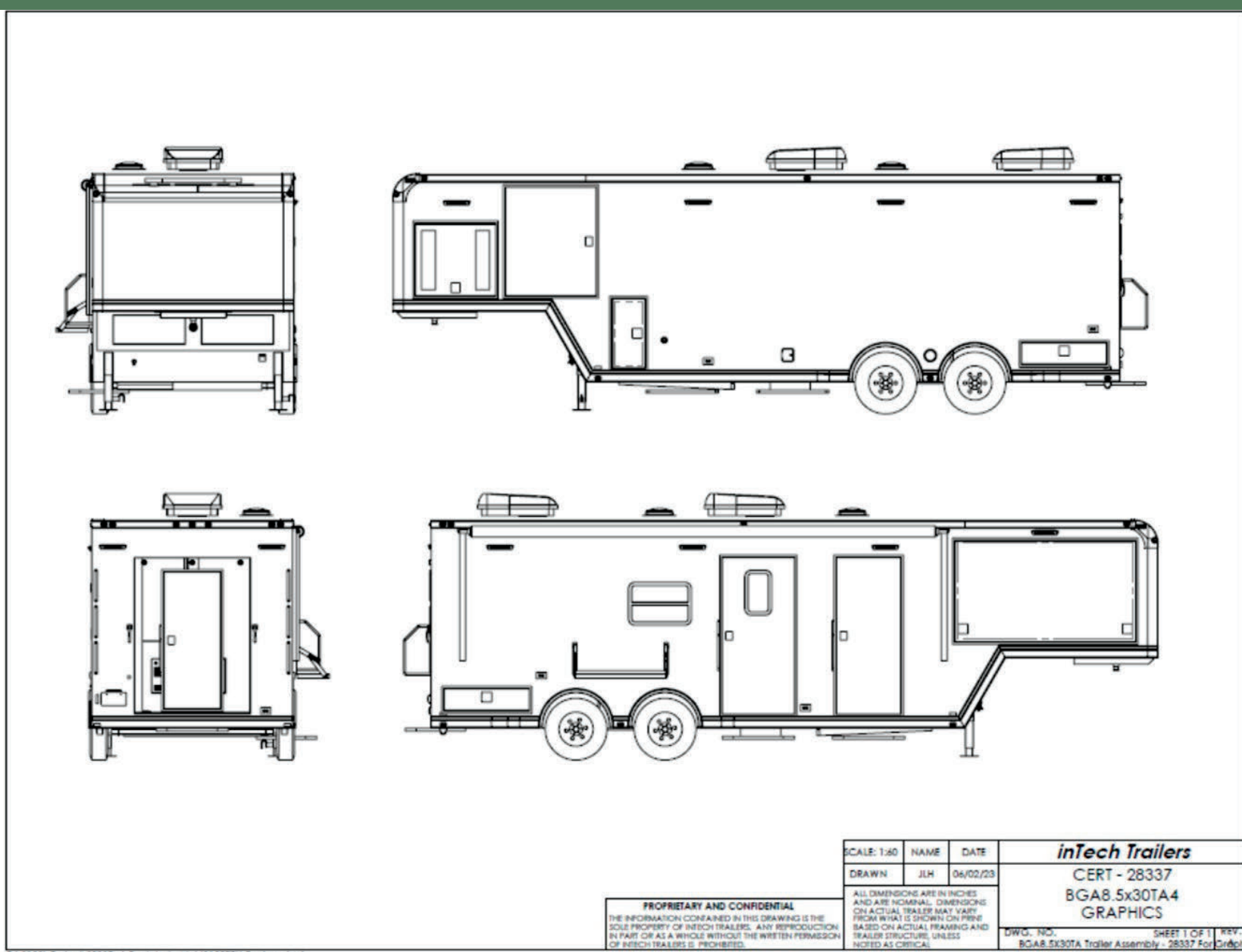
Friends of Outagamie County CERT SUPPORT TRAILER CAPITAL CAMPAIGN



*The Big Tow
Sequel*

A New Support Trailer Will Provide:

- Advanced scene safety features for CERT volunteers and emergency responders
- 50% more, secure designated storage space
- Outside access to restroom for responders
- Ergonomically designed user friendly access to indoor and outdoor storage areas
- Efficient climate controlled heating & cooling
- Additional indoor seating space for responders
- Easy access under-carriage storage
- Additional work counters and staging areas



-Drawings by inTech, Industrial Trailers



Custom Engineered Trailers
Every custom trailer is engineered to your exact specifications. The layout of your trailer should be tailored to your business needs to increase productivity and efficiency. Our expert staff is on standby to assist you with your next build.

Superior Quality Control
Controlling quality results in the absolute finest quality, fit, finish and attention to detail which has helped inTech to quickly become the Gold Standard in the trailer industry.

All-Aluminum Construction
Every Trailer is built utilizing an all aluminum, all tube, full perimeter frame. Aluminum renders the lightest weight trailer possible and our all tube construction means we are using the strongest, longest lasting materials available.

Campaign Goal: \$135,000

FRIENDSOFCERT@GMAIL.COM
WWW.FOCERT.ORG