

NEW JERSEY SANDY HOOK TO LITTLE EGG HARBOR

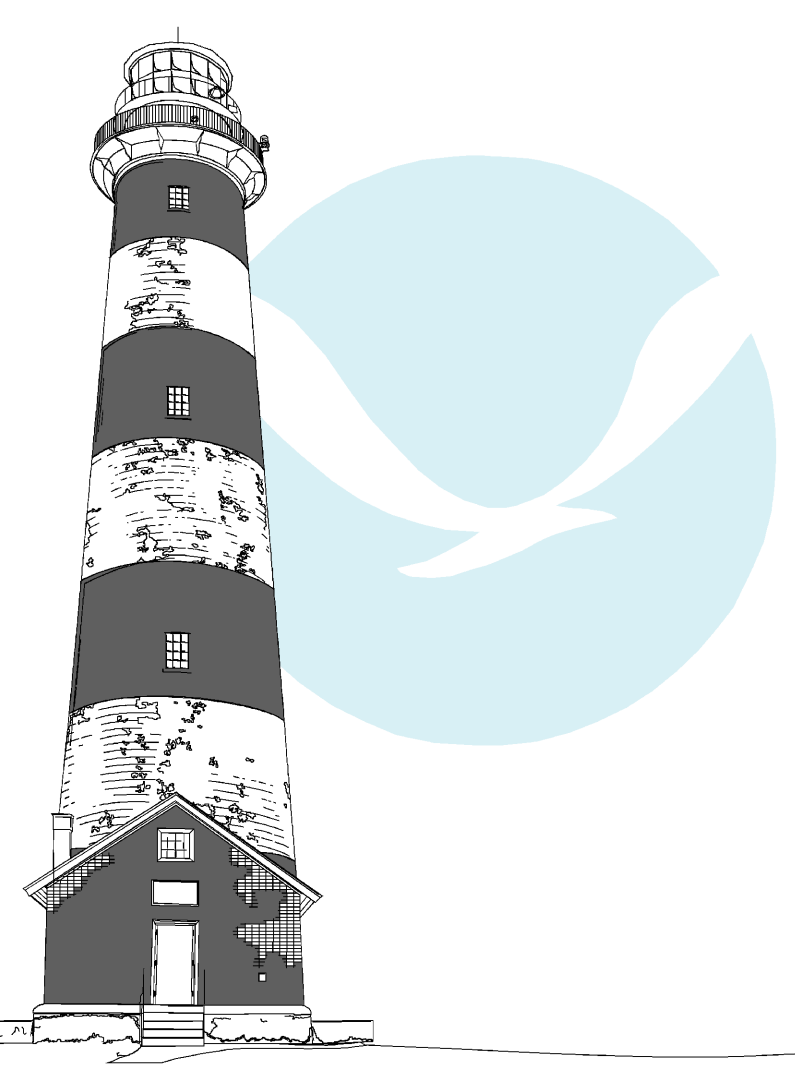
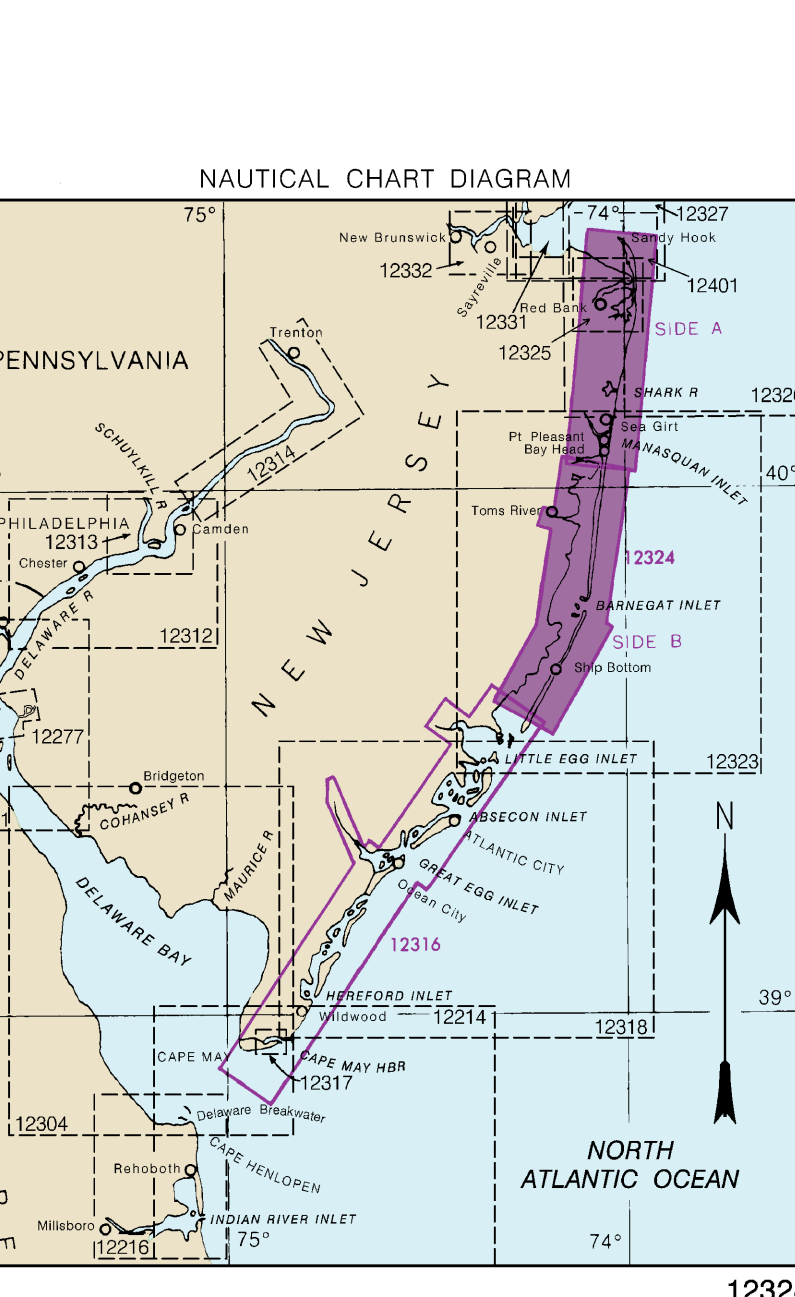


Chart 12324
Published by Hydrographic Office,
U.S. DEPARTMENT OF COMMERCE,
NATIONAL OCEANIC AND ATMOSPHERIC ADMINISTRATION,
NATIONAL OCEAN SERVICE
Meridian Projection At Scale 1:62,500
North American Datum of 1983
Soundings in Feet
At Mean Low Water Springs

HEIGHTS
Height in feet above mean high water
ADJUSTMENTS
All soundings are adjusted to mean low water springs, unless otherwise indicated. The datum for the soundings is the North American Datum of 1983. The datum for the depths is the mean low water of the tide.

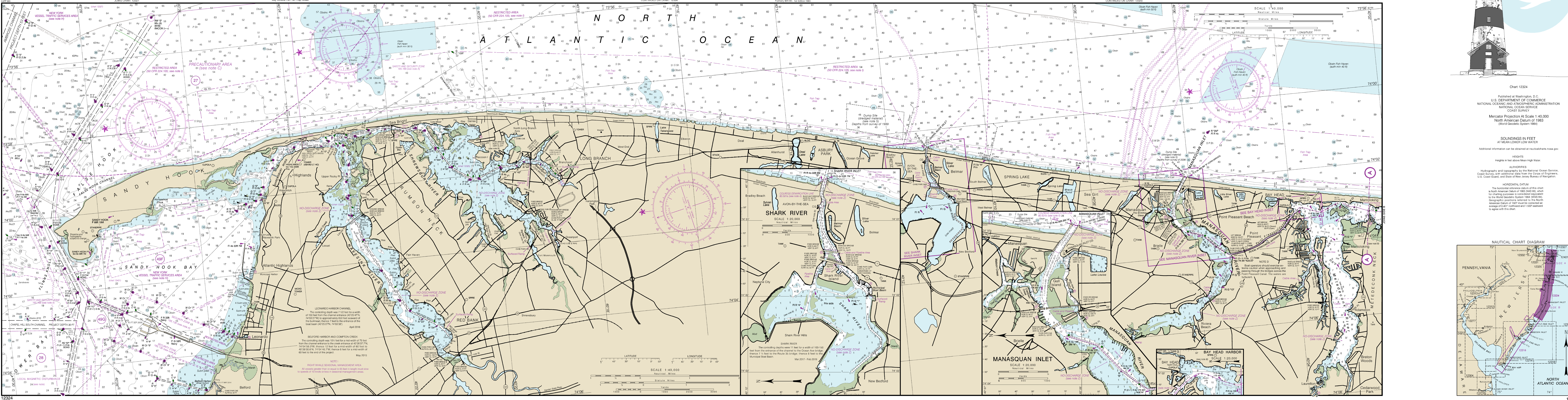


ANCHORAGE AREAS
100 to 500 meters
Limits and designations of anchorage areas are shown on this chart.

GENERAL ANCHORAGES
Limits and designations of anchorage areas are shown on this chart.

NAVAL ANCHORAGES
Limits and designations of anchorage areas are shown on this chart.

NOTES
1. This chart is a reproduction of the original chart published by the Hydrographic Office, U.S. Navy, and is published by permission of the U.S. Navy. It is published under the authority of the U.S. Navy and is not to be used for any other purpose without the express permission of the U.S. Navy.



NOTES
1. This chart is a reproduction of the original chart published by the Hydrographic Office, U.S. Navy, and is published by permission of the U.S. Navy. It is published under the authority of the U.S. Navy and is not to be used for any other purpose without the express permission of the U.S. Navy.

