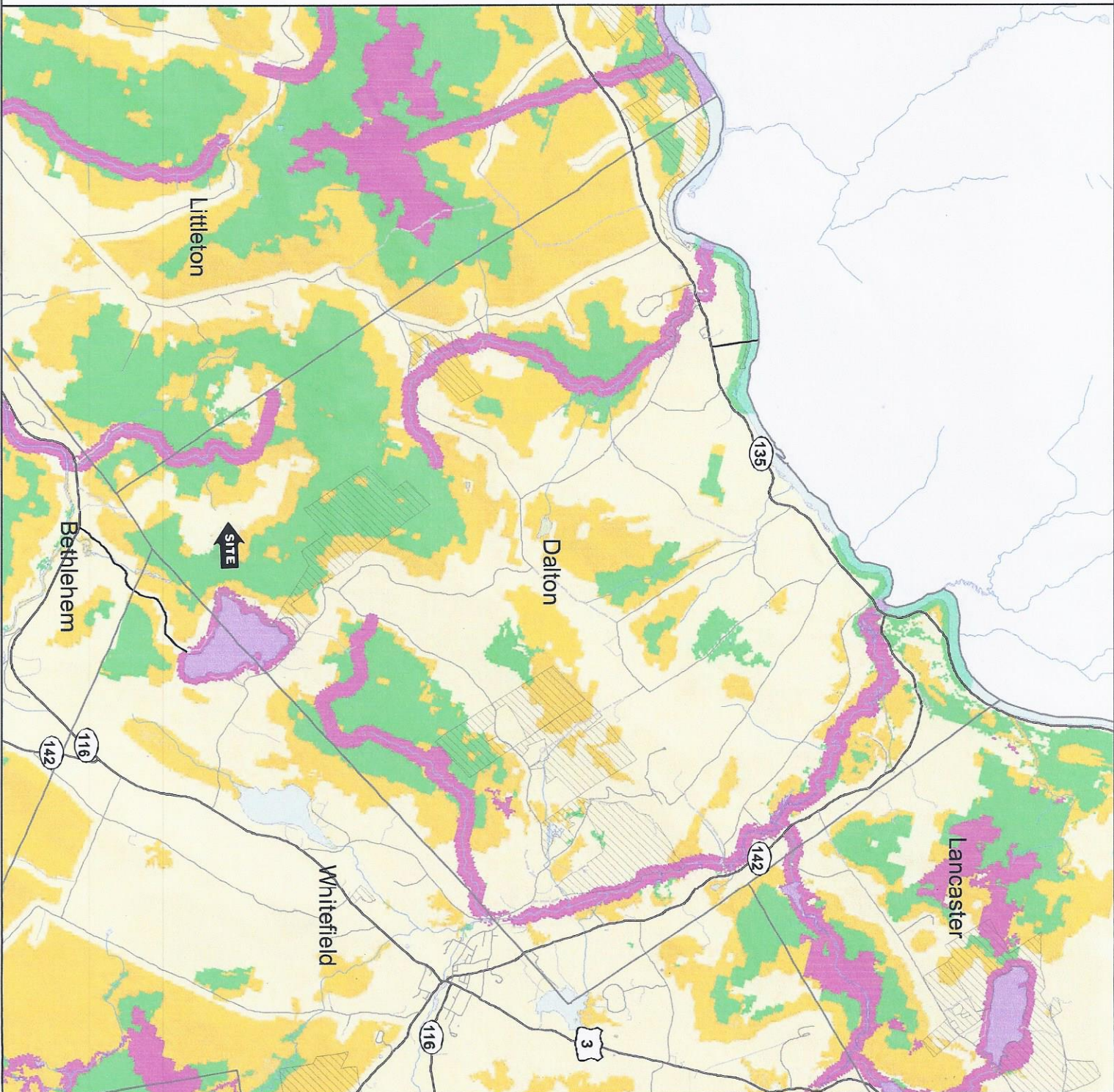
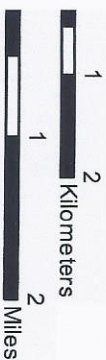
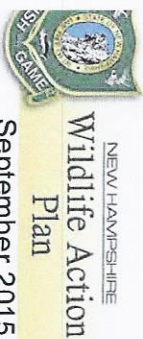


015 HIGHEST RANKED WILDLIFE HABITAT BY LOGICAL CONDITION

- Highest Ranked Habitat in New Hampshire
- Highest Ranked Habitat in the Biological Region
- Biological region = TNC ecoregional subsection or terrestrial habitats or Aquatic Resource mitigation region for wetlands and floodplain forest.
- Supporting Landscapes
- Conservation or public

map data provided by NH GRANIT (2015)
intended for legal use.



NEW HAMPSHIRE WILDLIFE HABITAT AND COVER 2015

-  Coastal Island/Rocky coast
-  Dune
-  Salt marsh
-  Peatland
-  Marsh and Shrub wetland
-  Northern or Temperate Swamp
-  Floodplain Forest
-  Grassland
-  Pine barren
-  Cliff or Talus slope
-  Rocky ridge
-  Alpine
-  High-elevation Spruce-fir
-  Low-elevation Spruce-fir
-  Northern hardwood-conifer
-  Appalachian oak-pine
-  Hemlock-hardwood-pine
-  Open Water
-  Developed or Barren (NLCD)
-  Conservation or public land

This map data provided by NH GRANIT (2015) intended for planning use only.



NEW HAMPSHIRE
Wildlife Action
Plan

September 2015

