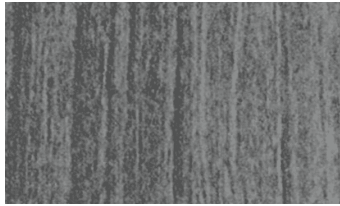




# SEVERN COLLECTION



BARNBOARD



FRONTIER



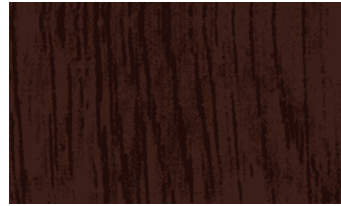
PONDEROSA



CANYON



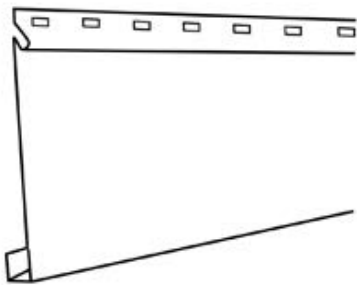
DURANGO



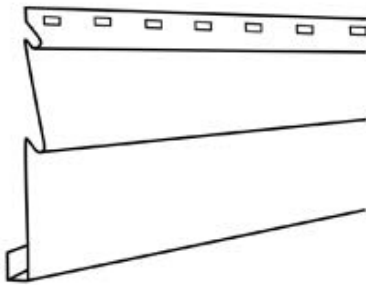
HOMESTEAD

## Custom Metal Wall Siding

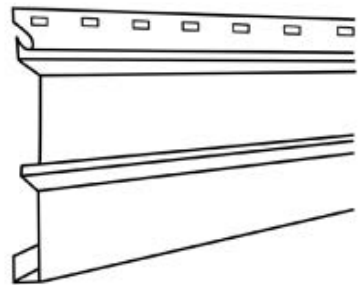
Heavy Metal Roofing offers five classic metal siding options. Our metal siding is roll formed on-site and produces a continuous piece of siding with no need for joints and seams. This provides a clean distinctive look that is unmatched by other pre manufactured products. Metal siding is low maintenance with no staining or painting, it will not mold, split or rot and is insect resistant. Made from 26 gauge steel, SMP / PVDF and wood grain, galvanized steel or .025 aluminum with PVDF coatings.



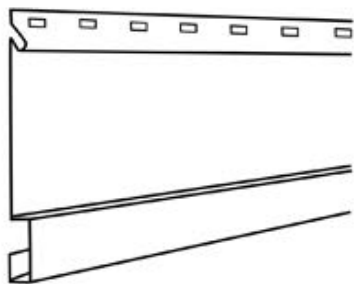
Horizontal 6", 8", and 10"



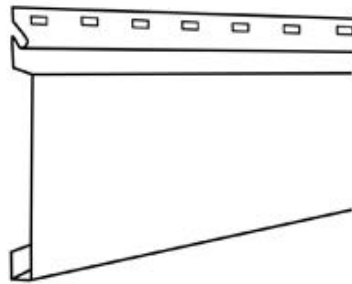
Double 3", 4", and 5"



Double Dutch 4" and 5"



Board and Batten 6", 8", and 10"



T1-11

# SPECIFICATIONS

	COATING TEST METHOD	POLY	SNP	PVDF
<b>Dry Film Thickness</b>	ASTM D 1400-94 ASTM D 1005-95	0.75-1.85 Mil 0.90-1.15 Mil	0.75-1.85 Mil 0.90-1.15 Mil	0.75-1.85 Mil 0.90-1.15 Mil
<b>Specular Gloss</b>	ASTM D 523-89 @ 60°	20-35	20-35	20-35
<b>Humidity Resistance</b>	ASTM D 2247 (100% relative humidity @ 95°)	Passes 1000 hours	Passes 1000 hours	Passes 2000 hours
<b>Salt Spray</b>	ASTM B 117 (5% salt spray @ 95°)	Passes 1000 hours	Passes 1000 hours	Passes 1000 hours
<b>Acid Pollutant</b>	ASTM D 1308-87 20% sulfuric acid 18 hours, 10% muriatic acid 15 minutes	NO EFFECT	NO EFFECT	NO EFFECT
<b>Chalk Resistance</b>	ASTM D 4214 Hunter Units (Florida exposure @ 45° S)	Rating not <8 @ 20 years	Rating not <8 @ 30 years	Rating not <8 @ 40 years
<b>Color Retention</b>	ASTM D 4214 Hunter Units (Florida exposure @ 45° S)	Rating not >5Δ @ 20 years	Rating not >5Δ @ 30 years	Rating not >5Δ @ 40 years
<b>Adhesion/Reverse Impact</b>	ASTM D 3359-95a (reverse impacted 1/16" crosshatched) ASTM D 2794-93 (3,000 x inches of metal thickness)	NO ADHESION LOSS	NO ADHESION LOSS	NO ADHESION LOSS
<b>Pencil Hardness</b>	ASTM D 3363	H <	H-25 (NCCA II-12)	HB-H
<b>Flexibility T-Bend</b>	ASTM D 4145-83	2T no pickoff	2T no pickoff	2T no pickoff
<b>Abrasion Resistance</b>	ASTM D 968-93 (to expose 5/32" of substrate)	15 Litres	25-40 Litres	100 Litres
<b>Graffiti Resistance</b>	ASTM D 6578 (cleanability of defaced panels- spray paint, pens, etc.)	NO EFFECT	NO EFFECT	NO EFFECT
<b>Warranty</b>		20-year limited warranty	40-year limited warranty	40-year limited warranty

[WWW.HEAVYMETALROOFING.CA](http://WWW.HEAVYMETALROOFING.CA)



METAL ROOFING SIDING CUSTOM CLADDING

**(705) 220-8656**