



The Charlestowne-DP-XV

with Front Entry Double Garage



"Live The Great Life"





The Charlestowne-DP-XV

with Front Entry Double Garage



"Live The Great Life"

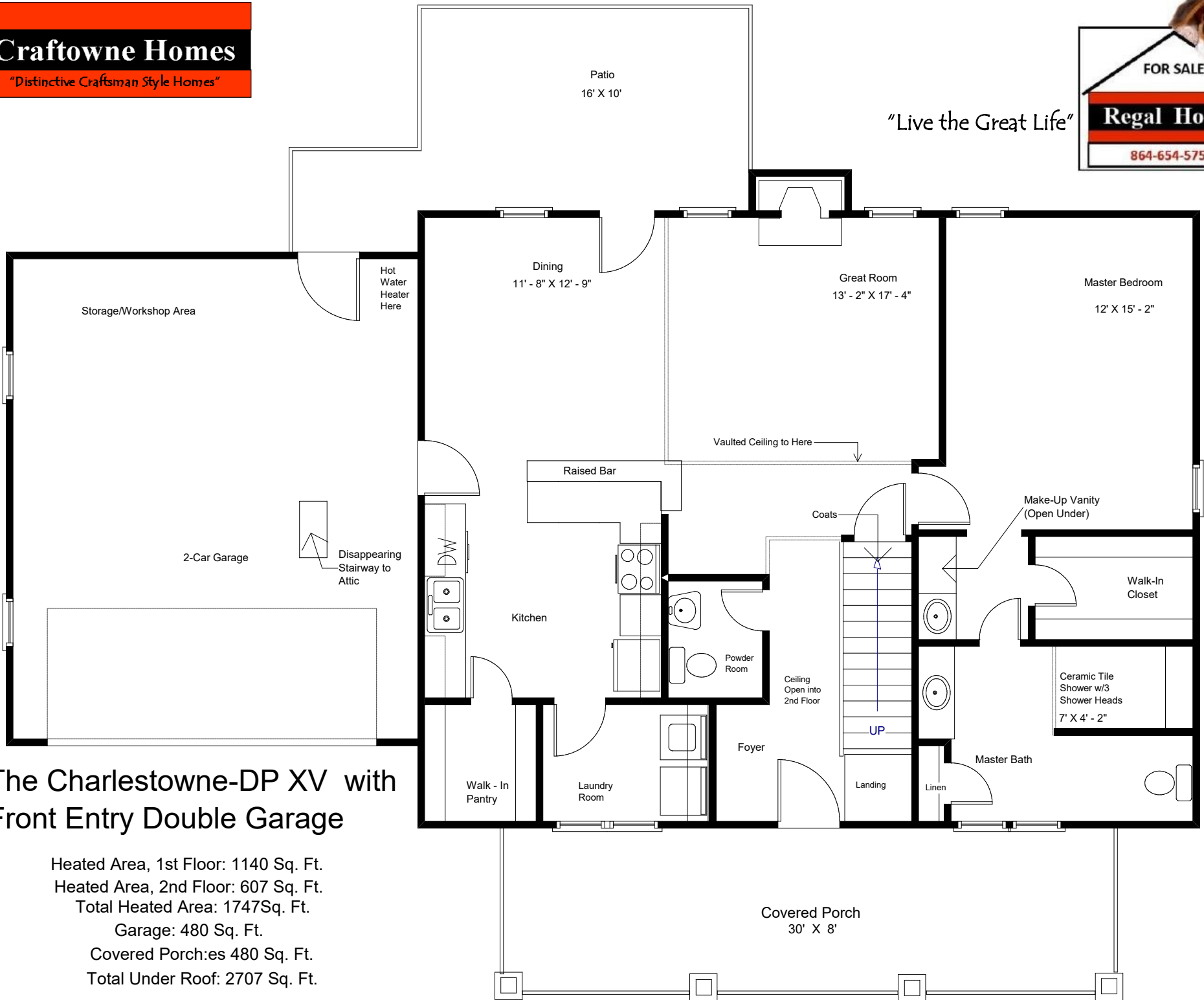


Craftowne Homes

"Distinctive Craftsman Style Homes"



"Live the Great Life"



The Charlestowne-DP XV with Front Entry Double Garage

Heated Area, 1st Floor: 1140 Sq. Ft.

Heated Area, 2nd Floor: 607 Sq. Ft.

Total Heated Area: 1747Sq. Ft.

Garage: 480 Sq. Ft.

Covered Porches 480 Sq. Ft.

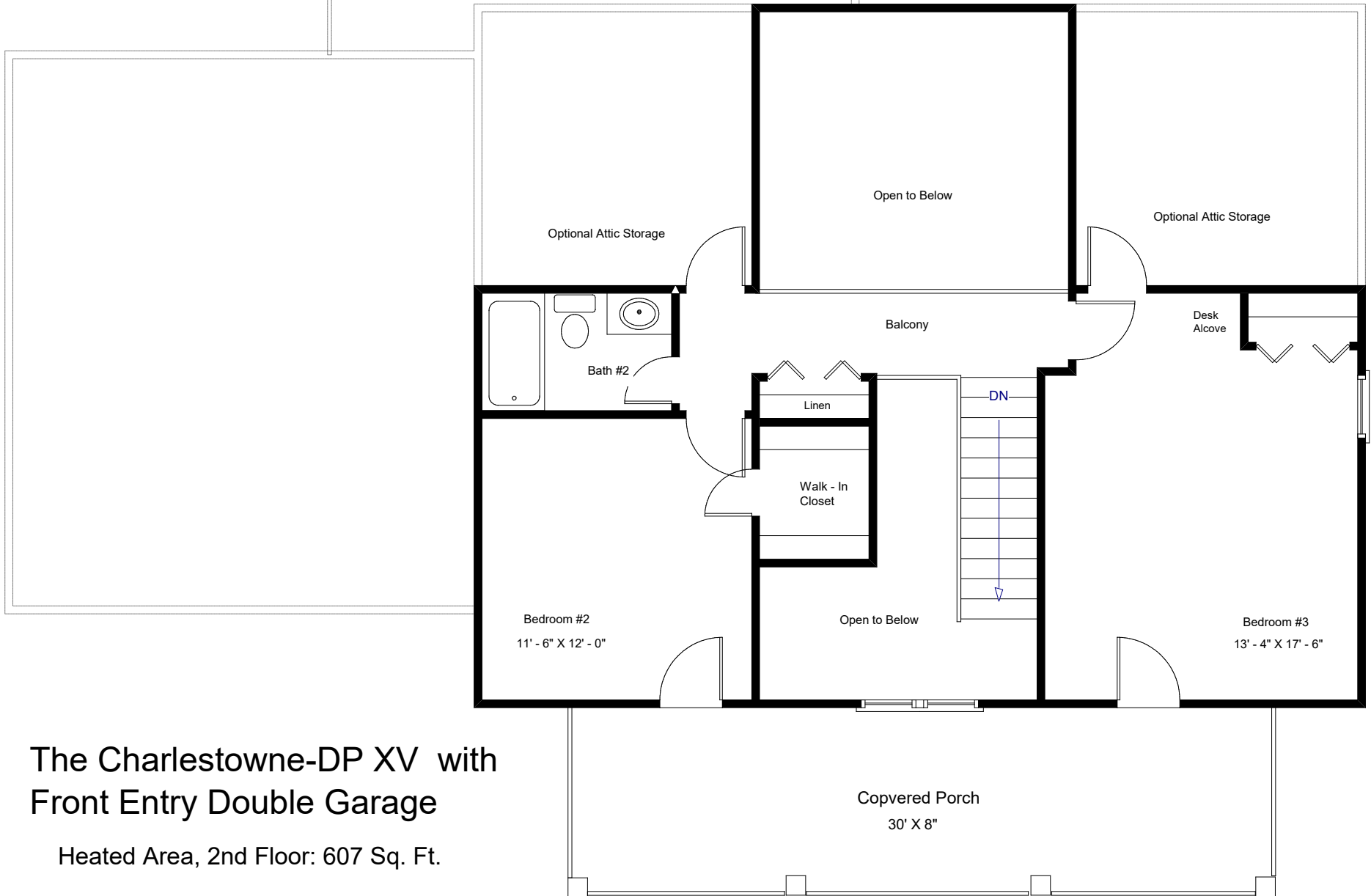
Total Under Roof: 2707 Sq. Ft.

Craftowne Homes

"Distinctive Craftsman Style Homes"



"Live the Great Life"



The Charlestowne-DP XV with
Front Entry Double Garage

Heated Area, 2nd Floor: 607 Sq. Ft.