



The Scottstowne-Farm IX with Front Entry Side Garage



"Live the Great Life"





The Scottstowne-Farm IX with Front Entry Side Garage



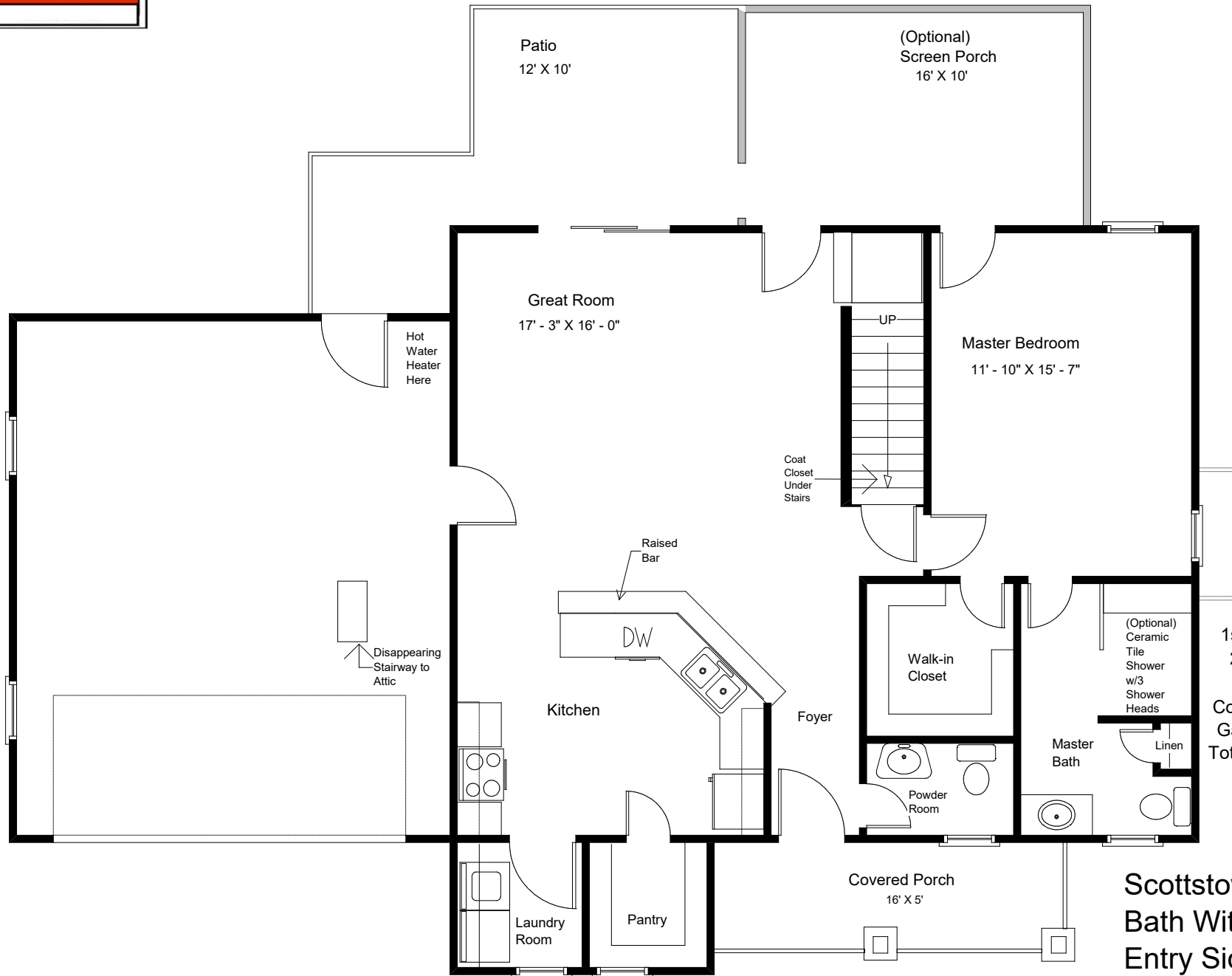
"Live the Great Life"





"Live the Great Life"

Craftowne Collection
"Distinctive Craftsman Designs"



House:
1st Floor: 1024 Sq. Ft.
2nd Floor: 667 Sq. Ft.
Total: 1691 Sq. Ft.
Covered Porch: 80 Sq. Ft.
Garage Area: 480 Sq. Ft.
Total Under Roof: 2251 Sq. Ft.

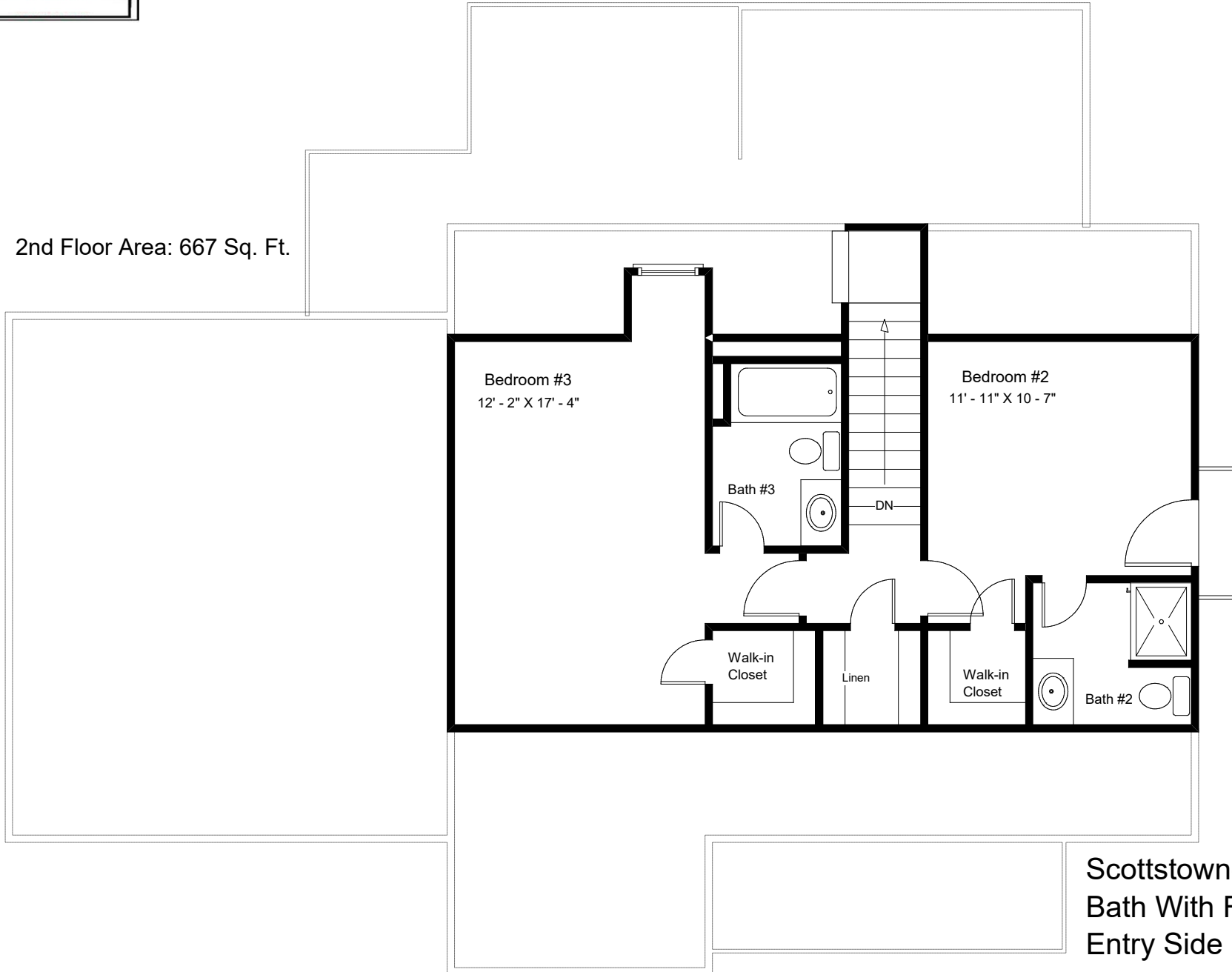
Scottstowne IX 3.5
Bath With Front
Entry Side Garage



"Live the Great Life"

Craftowne Collection
"Distinctive Craftsman Designs"

2nd Floor Area: 667 Sq. Ft.



Scottstowne IX 3.5
Bath With Front
Entry Side Garage