



The Spartan-G-D XV with L-Courtyard Entry
Double Garage and Full Basement
Street Side View



Lakeside
Collection "Easy Living"

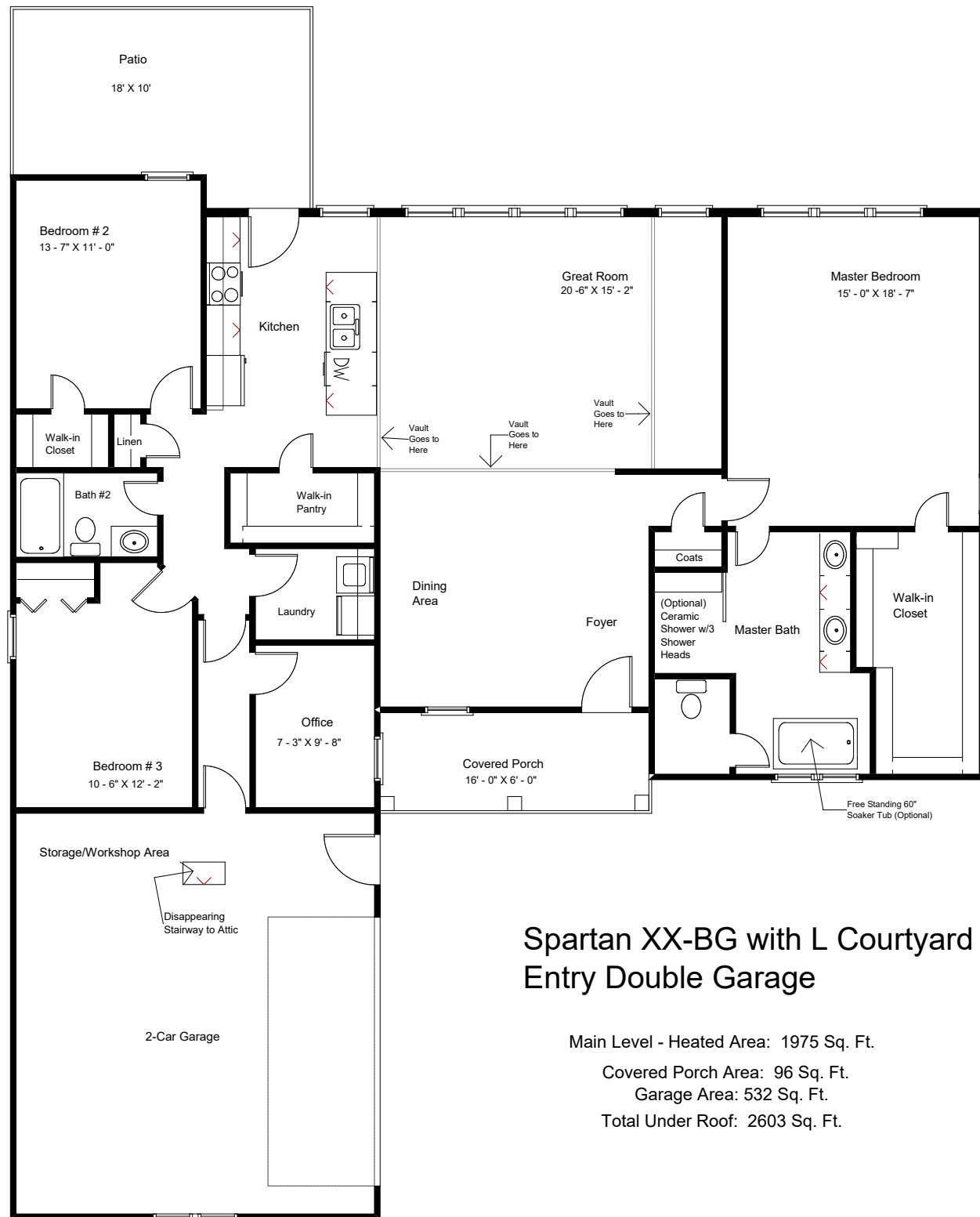


"Live the Great Life"





"Live the Great Life"



Spartan XX-BG with L Courtyard Entry Double Garage

Main Level - Heated Area: 1975 Sq. Ft.

Covered Porch Area: 96 Sq. Ft.

Garage Area: 532 Sq. Ft.

Total Under Roof: 2603 Sq. Ft.

