



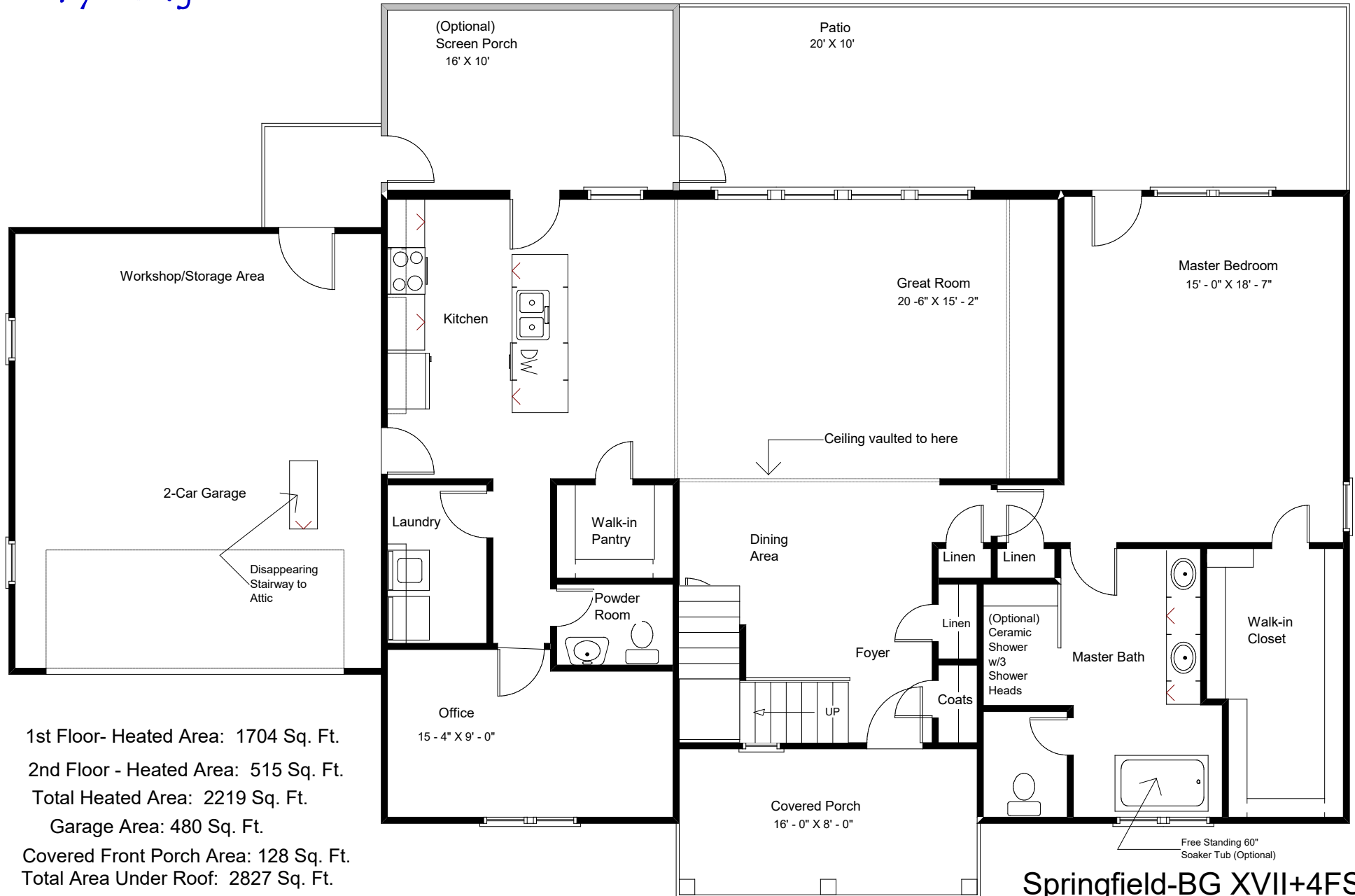
*The Springfield XVII+4FS
with Front Entry Side Garage
Street Side View

 Lakeside
Collection "Easy Living"



"Live the Great Life"





1st Floor- Heated Area: 1704 Sq. Ft.

2nd Floor - Heated Area: 515 Sq. Ft.

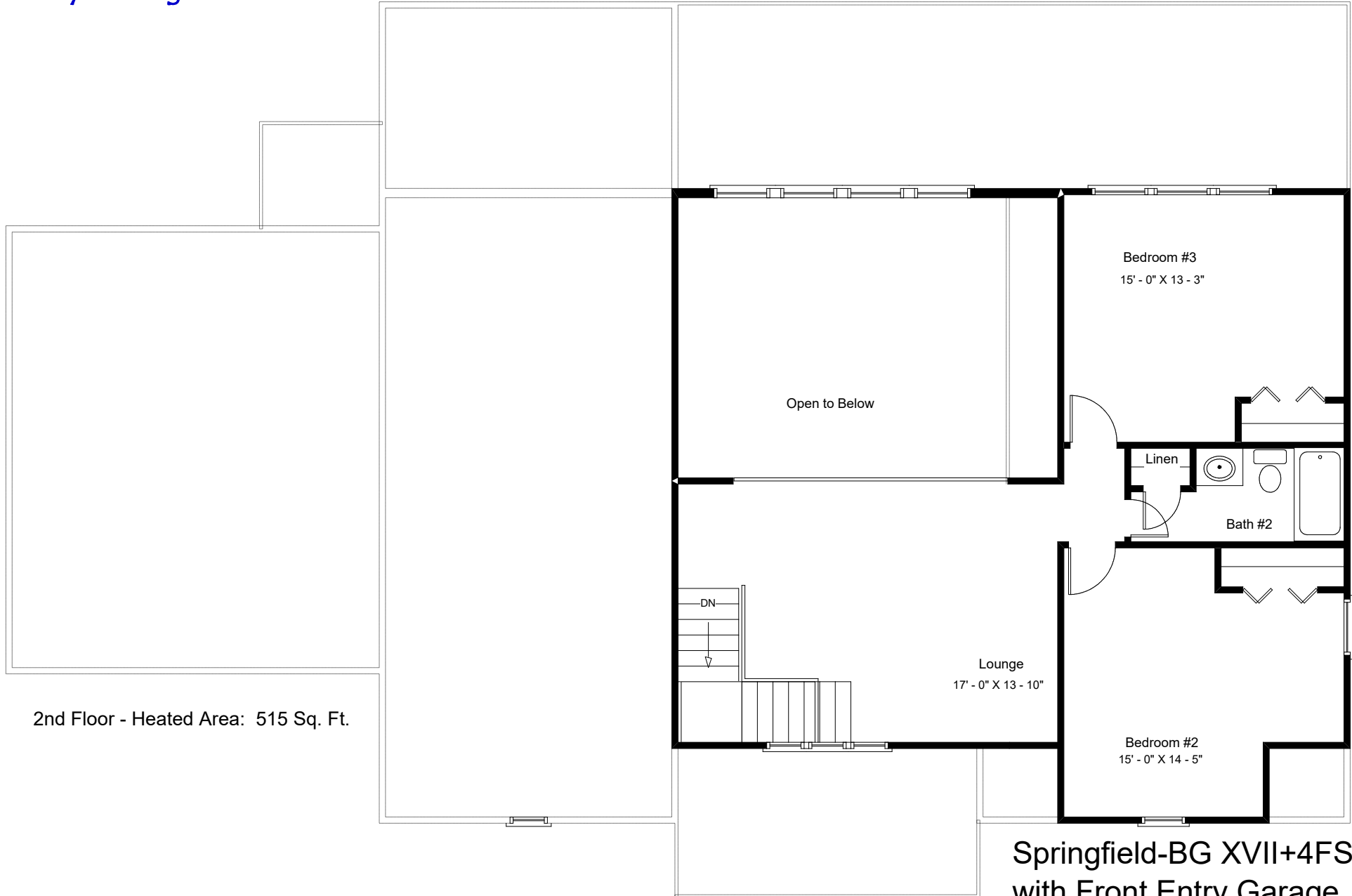
Total Heated Area: 2219 Sq. Ft.

Garage Area: 480 Sq. Ft.

Covered Front Porch Area: 128 Sq. Ft.

Total Area Under Roof: 2827 Sq. Ft.

Springfield-BG XVII+4FS
with Front Entry Garage



2nd Floor - Heated Area: 515 Sq. Ft.

Springfield-BG XVII+4FS
with Front Entry Garage