



The Welchtowne XXVI with Side Garage
(Front Entry)
Elevation D 2B & 3 LR

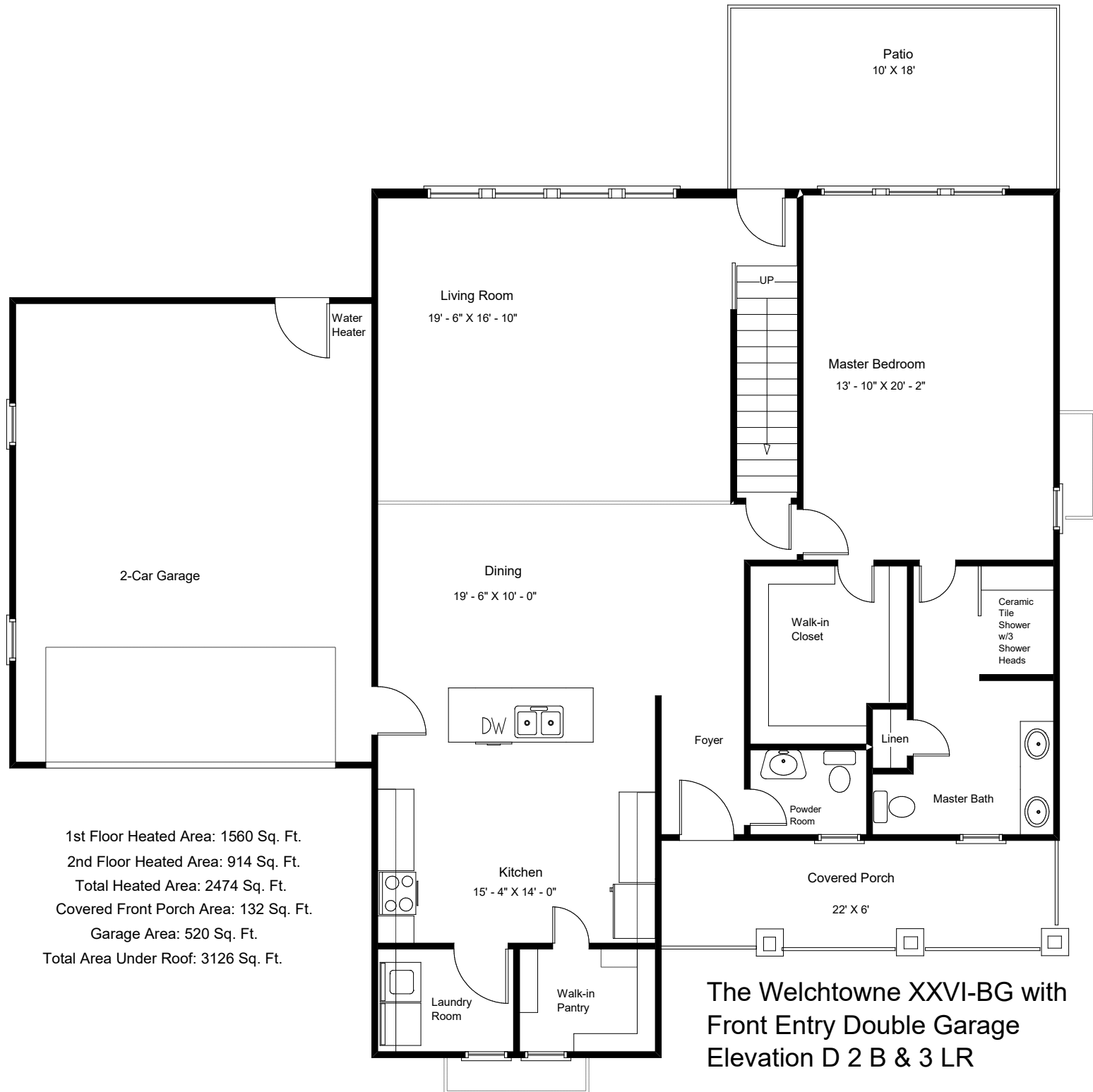


"Live the Great Life"





"Live the Great Life"



1st Floor Heated Area: 1560 Sq. Ft.
 2nd Floor Heated Area: 914 Sq. Ft.
 Total Heated Area: 2474 Sq. Ft.
 Covered Front Porch Area: 132 Sq. Ft.
 Garage Area: 520 Sq. Ft.
 Total Area Under Roof: 3126 Sq. Ft.

The Welchtowne XXVI-BG with Front Entry Double Garage Elevation D 2 B & 3 LR





"Live the Great Life"

