

IN-STOCK SINKS

Direct to Laminate Undermount Kitchen Sinks



Karran Q-350
Granite Composite
Min. Cabinet Required: 36"
O.D. 32-3/8" x 19" x 8-1/2"
Colors: White, Bisque, Grey, Black, Concrete, or Brown

Strainer basket(s) not included
Bottom grids available



Karran Q-360R
Granite Composite
Min. Cabinet Required: 36"
O.D. 32-1/2" x 21" x 8-1/2"
(Small 7-1/2")
Colors: White, Bisque, Grey, Black, Concrete, or Brown

Strainer basket(s) not included
Bottom grids available



Karran E-350
Stainless Steel
Min. Cabinet Required: 36"
O.D. 32-1/2" x 19" x 8-1/2"
18 Gauge

Strainer basket(s) not included
Bottom grids available



Karran E-360R
Stainless Steel
Min. Cabinet Required: 36"
O.D. 32-1/2" x 21-1/8" x 8-1/2"
(Small 6-1/4")
18 Gauge

Strainer basket(s) not included
Bottom grids available

Drop-In Sinks



Kohler 80084-1PC-NA
Stainless Steel
Min. Cabinet Required: 36"
O.D. 33" x 22" x 9-1/2"
18 Gauge 1 Faucet Hole In-Stock

ACCESSORIES INCLUDED:

- 2-Piece Colander Set
- Bambo Cutting Board
- Silicone Sinkmat
- Sink Strainer



Kindred FCDLA3322-8-1CBN FCDLA3322-8-4CBN
Stainless Steel
Min. Cabinet Required: 36"
O.D. 33" x 22" x 8"
18 Gauge 1 or 4 Hole

Strainer basket(s) not included
Bottom grids available

See more sink options in our
Stock Sink Reference Guide
at www.fabricatorssupply.net

SINK STRAINERS & FLANGES

Karran Granite



BWSTUG/PWG

COLOR	STRAINER	DISPOSAL FLANGE
White	BWSTUG/PWG	BWDUFG/PWG
Bisque	BWSTUG/CPNE	BWDUFG/CPNE
Grey	SKAQBSGR	SKAQDFGR
Black	BWSTUG/MLB	BWDUFG/MLB
Concrete	SKAQBSCN	SKAQDFCN
Brown	BWSTU/ORB	BWDUF/ORB

Kindred



KINDRED 1135

PART #	DESCRIPTION
KINDRED 1135	Polished Stainless with PVC Shell & Tailpiece

Mountain Plumbing

PART #	DESCRIPTION
Mountain Plumbing MT 200EV/BR	Brushed Stainless disposal flange
Mountain Plumbing MT 300/BR	Brushed Stainless strainer



MT 200EV/BR



MT 300EV/BR

Additional Kampel Accessories



SEAMFIL

The "ORIGINAL" laminate repair.

Repair nicks, fill seams and make gouges disappear with this one-part system.



COLORFLEX

Custom colored acrylic latex caulk with silicone.

ColorFlex is designed for corner and perimeter caulking of decorative surfaces.



2024 IN-STOCK POSTFORM LAMINATE COLLECTION

An appealing selection of
Wilsonart® Laminate
colors kept in-stock to offer:
Better Price • Better Lead Time
(template and install not always required)

BRANCH LOCATIONS:

Fargo, ND
Bismarck, ND
Billings, MT
Brainerd, MN
Blaine, MN

SHOWROOM LOCATIONS:

Fargo, ND
Bismarck, ND
Billings, MT

800.747.1185
www.fabricatorsunlimited.com



IN-STOCK SINKS

Direct to Laminate Undermount Vanity Sinks



Karran A-306
Acrylic
O.D. 19" x 15-1/2" x 6"
Colors: White or Bisque



Karran A-309
Acrylic
O.D. 20-3/4" x 13-3/4" x 5-1/8"
Colors: White or Bisque



Karran Q-306
Granite Composite
O.D. 19" x 15" x 5-1/2"
Colors: Black, Brown, Concrete, Grey, Bisque and White

Drop-In Vanity Sinks



Chemcore DAISY
Porcelain
O.D. 21-3/4" x 18-5/8" x 8-1/4"
Bowl Depth: 6-3/8"
White or Bisque
1 hole or 3 hole



Chemcore LEDGE
Porcelain
O.D. 21-1/4" x 18" x 6-3/4"
Bowl Depth: 5"
White or Bisque
1 hole or 3 hole (4" center)

Direct to Laminate Undermount Bar Sinks



Karran E-410
Stainless Steel
Min. Cabinet Required: 18"
O.D. 16-1/4" x 18-1/4" x 8-1/2"
18 gauge

Strainer basket(s) not included
Bottom grid available

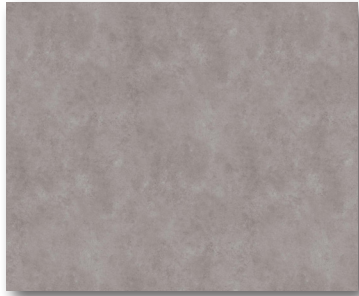


Karran Q-315
Granite Composite
Min. Cabinet Required: 21"
O.D. 16-5/8" x 16-5/8" x 8"
Colors: White, Bisque, Grey, Black, Concrete, or Brown

Strainer basket(s) not included

See more sink options in our
Stock Sink Reference Guide
at www.fabricatorssupply.net

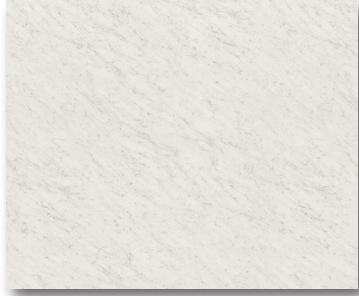
**IN-STOCK POSTFORM STANDARD EDGE
STANDARD COLORS**



PEARL SOAPSTONE
4886-38



DESERT SPRINGS
4904-38



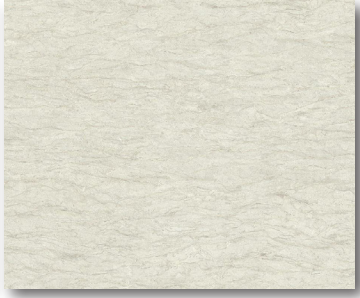
WHITE CARRARA
4924-38



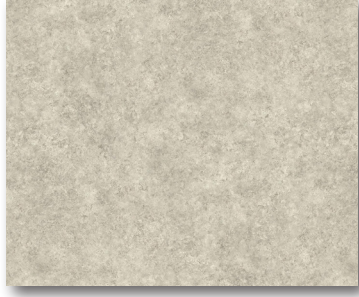
BORDEAUX JUPARANA
4929-38



FORGED STEEL
4995-60



WHITE CASCADE
5003-38



PEBBLE PIAZZA
5009-60



ANZIO MARBLE
5037-38



BEACHWALK
5044-60



ROCA BOSCO
5064-60

**IN-STOCK POSTFORM STANDARD EDGE
UPCHARGE COLORS**



BIANCO ROMANO
1872K-35



WINTER CARNIVAL
1874K-35



MARMO BIANCO
1885K-07



CALCUTTA MARBLE
4925K-07



GLACIER QUARTZITE
5025K-22



ARENITE CREAM
5027K-07



PIETRA VIVA
5063K-22



ALUMA MARBLE
5067K-15



SPRING CARNIVAL
1876K-35



AUTUMN CARNIVAL
1877K-35



ITALIAN WHITE DI PESCO
4954K-22



ANDORRA SHADOW
4998K-22



LISOLA
5043K-15



TERRENA SOAPSTONE
5059K-15



CRYSTAL QUARTZITE
5068K-22

**IN-STOCK POSTFORM MARBELLA EDGE
UPCHARGE COLORS**



WINTER CARNIVAL
1874K-35



SPRING CARNIVAL
1876K-35



AUTUMN CARNIVAL
1877K-35



CALCUTTA MARBLE
4925K-07



CALACATTA LINCOLN
5042K-07

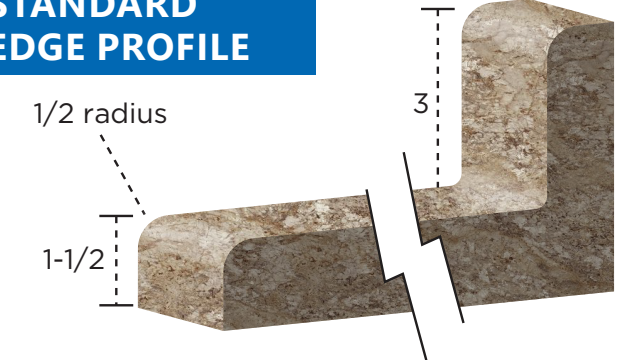


TERRENA SOAPSTONE
5059K-15

**MARBELLA
EDGE PROFILE**



**STANDARD
EDGE PROFILE**



SPECIFICATIONS:

- Pre-Glued Left & Right End Caps
- 12' Pre-Glued Edging (2")
- Carton and Freight Additional
- Other sizes available special order
- Please call for pricing & lead times

**AVAILABLE
STOCK SIZES:**

- 12' Kitchen
- 12' Vanity 22-1/2"
- 12' Bar 27"
- 8' Bar 36"
- 12' Bar 36"



**REQUEST ACTUAL SAMPLES
FOR ACCURATE COLOR MATCH VIA
SAMPLES@FABRICATORSUNLIMITED.COM**