

Cottage

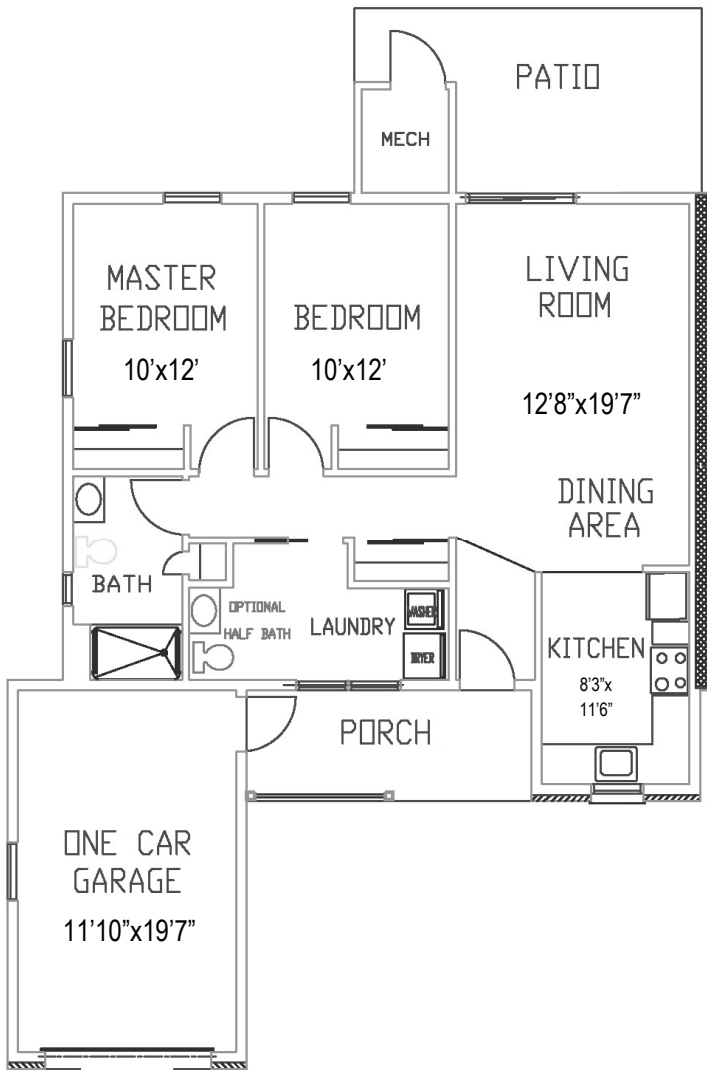


BUCHERT
RIDGE COMMUNITY
WHERE NEIGHBORS FEEL LIKE FAMILY

CREST

2 Bedrooms, 1 Bathroom

(shown with Garage and Optional 1/2 Bath)



Living Space 980 SF, garage 230 SF

Floor plans shown are not to scale and indicate approximate square footage

Appliances Included:

Refrigerator, Stove, Microwave, Dishwasher, Garbage Disposal, Washer, Dryer

Updated Options:

Flooring, Carpeting, Lighting, Hardware, Corian Countertop, Tile Backsplash

Entry Fee:

75% Refund at Resale

Starting at \$212,300

Upgraded features on reverse side

Monthly Maintenance & Service Fee includes:

- 24/7 On-Call Maintenance
- Property and School Taxes
- Property Insurance
- Maintenance (Inside, Outside, & Appliances)
- Water/Sewer
- Trash/Recycling
- Landscaping
- Snow Removal

1 Resident: \$1,099

2 Residents: \$1,322

Fee ends when home is returned for resale.

- Homes have forced air/natural gas heat w/central air.
- Resident is responsible for utilities (heat, electric, cable, internet, & phone).
- We encourage all residents to carry content insurance, e.g., tv, furniture, jewelry, etc.



Upgraded Features: Crest

| | |
|-------------------------------|----------|
| Garage | \$22,000 |
| Extra Half Bath | \$ 3,300 |
| Patio Enclosure | \$ 5,200 |
| Patio Enclosure w/ Heat & Air | \$ 7,800 |
| 4-Season Sunroom Addition | \$20,000 |
| Extra Patio | \$ 2,000 |
| Single Home | \$13,000 |

Upgraded features vary by home.

NOTES