



Live in a piece of History!
Original farmhouse
with modern amenities!

FARMHOUSE APARTMENT A

first floor apartment

Bedroom 1: 12 x 10
Bedroom 2: 12'6" x 10
Living Room: 15'6" x 13'6"
Eat in Kitchen: 17'6" x 14'
Laundry
Full Bath 1
Full Bath 2
Front Porch

(Floor plan on reverse)

New Appliances Included:

Refrigerator, Stove, Microwave, Dishwasher,
Garbage Disposal, Washer, Dryer

Updated Options:

Flooring, Carpeting, Lighting, Hardware,
Corian Countertop, Tile Backsplash

(1,188 SF)

Floor plans shown are not to scale and indicate approximate square footage

Entry Fee:

75% Refund at Resale

Starting at \$213,900

Upgraded features on reverse side

Monthly Maintenance & Service Fee includes:

- 24/7 On-Call Maintenance
- Property and School Taxes
- Property Insurance
- Maintenance (Inside, Outside, & Appliances)
- Water/Sewer
- Trash/Recycling
- Landscaping
- Snow Removal

1 Resident: \$1,099

2 Residents: \$1,322

Fee ends when home is returned for resale.

- Homes have forced air/natural gas heat w/central air.
- Resident is responsible for utilities (heat, electric, cable, internet, & phone).
- We encourage all residents to carry content insurance, e.g., tv, furniture, jewelry, etc.

Farmhouse
Apartment

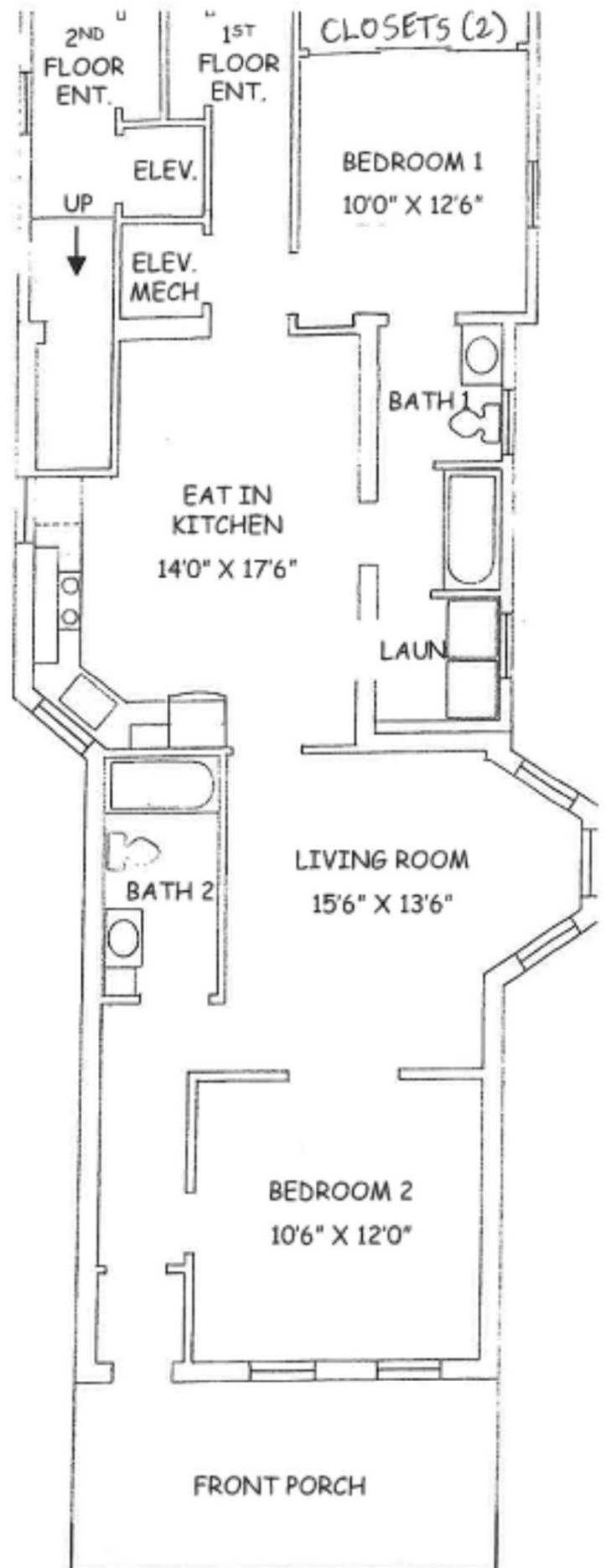


BUCHERT
RIDGE COMMUNITY
WHERE NEIGHBORS FEEL LIKE FAMILY

FARMHOUSE APARTMENT A

first floor apartment

Bedroom 1: 12 x 10
Bedroom 2: 12'6" x 10
Living Room: 15'6" x 13'6"
Eat in Kitchen: 17'6" x 14'
Laundry
Full Bath 1
Full Bath 2
Front Porch



Floor plans shown are not to scale and indicate
approximate square footage

2011 Buchert Road Pottstown, PA 19464 | Phone: 610-323-5190 | Fax: 610-326-3142

BuchertRidge.com
Find us on   YouTube

*02-05-2024