

Spring 2015



Upwell Parish Council

# Community Magazine

## Inside this issue

Chairman's Letter	2
Auction of Promises	2
Dog Attacks	3
Parking advice	3
Upwell Village Hall	4
Upwell Playing Field	5
G&S Ruddigore	5
Borough Elections	6
Make A Difference	7
Parish Elections	8
Alive in Upwell	10
Xmas lights winners	10
Greenfingers	12
Three Holes VH	13
Fire Service	13
Let's Walk	14
Speedwatch	16
Parish Assembly	16
PC Meetings	16



## The Five Bells - Saved by Local Businessmen

"The Five Bells Inn", along with other historic buildings, occupies a central position in the village of Upwell. It dates back to the late 1700's but has recently been in the hands of the liquidators who offered the site for open sale.

Being in a prime position, the site was considered for development into either flats or other forms of commercial buildings, as evidenced by the parties interested in purchasing the site. The loss of the Inn would have deprived the village of an important historical feature and also had a considerable detrimental effect on the community.

During February this year, two local businessmen joined forces to try and defeat the developers in order to preserve "The Five Bells" for the village and its heritage. This enterprise was finally successful and the Inn was purchased by Mr Chris Robinson and Mr James Brightly.

The aim is to restore the Inn to its former glory, with modernisation of the essential utilities and renovation of the exterior/interiors in order to establish its reputation once again. This will include the restaurant that will enhance the viability of its commercial activities. The Inn will continue to provide accommodation rooms in accordance with its past tradition.

It is intended to maintain the bar area for the provision of normal services. This will also include catering specifically for the boat traffic and road travellers whenever possible.

The work will be carried out over a period of months, as applications for various grants to assist with the much-needed refurbishment take their course.

It is hoped that the community, during this period, will appreciate and support the effort that the project will require in order to succeed.

Chris Robinson

## Well Creek Dredging underway Near Marmont Priory



Photos: A Harrison



QUALITY  
PARISH  
COUNCIL



## FROM THE CHAIRMAN

support the campaign.

Parish Council news:

Once again the Council voted to keep the Precept at its current rate. As in previous years this should mean a slight reduction to the your Council Tax bill owing to an increase in the number of properties in the tax base.

Council voted by 6 votes to 4 with 1 abstention for the Borough Council to continue to manage the Cemetery. Cllr David Pope is currently responsible for this department at the Borough and all comments and enquiries should be directed to him.

A joint bid with Emneth and Nordelph has been submitted to N.C.C. under the Parish Partnership Scheme for a 'Sam2' speed camera, which will display the speed of passing vehicles and record the data. If the bid is successful this camera will be sited at various locations through the Parish. Meanwhile, Community

Dear All,  
Welcome to the spring edition of your community magazine.

First, I would like to thank all of you who signed the petitions, earlier in the year, in support of the Five Bells and to retain Upwell Post Office at its present location. The latter attracted over 500 signatures and while its future has yet to be decided, The Rt Hon. Elizabeth Truss M.P. offered to present the petition to Parliament and to

Speedwatch will resume shortly, with a new team of volunteers.

In response to concerns raised by Parishoners, a bid has also been submitted under the Parish Partnership scheme for a footpath on the river side of Lowside.

Council's comments on the Local Development Framework process for the Preferred Options Policies were submitted, but the latest news is that English Heritage have objected to 3 of the 4 proposed development sites as being detrimental to the Conservation Area.

Hastoe Housing has now found tenants for the new properties at Birdbeck Drive, but owing to a legal problem with the provision of electricity they will not be able to move in until early summer.

Two trees have been cut down in the War Memorial garden and the cedars trimmed, letting in much more light. The names of the eight men who died in WWI whose names are not recorded on the Memorial will shortly be engraved in exactly the same way as the ones that are there already. The craftsman who repaired the Angel's hand and did the cleaning will carry this out.

With thanks to all who have contributed to this magazine, Editor Steve Calton, the advertisers for their support and the distributors.

Copy date for the summer magazine will be Friday June 5<sup>th</sup>.

Kind regards,

**Prue Lester**

Many of you have asked me whether Sue Smith and 'Dan the Man' competed at Crufts this year and Sue told me that they had had such a successful show season last year that they decided to give it a miss.

## AUCTION OF PROMISES

Fed up with cleaning your windows? Fancy having a delicious dinner cooked for you in your own home? How much would you pay NOT to have to trim that hedge?

Members of the Methodist Church are offering to do things like this for you, but as we all know there's no such thing as a free lunch – (or hedge trim) – so you are invited to come along to the Methodist Church Hall on 11<sup>th</sup> July at 6.30 p.m. and bid for a service that we will promise to provide on a day convenient to you. The Auction will be followed by a light buffet supper. I can't at this point in time promise the things listed above, they are just examples, but we have a range of ideas, hopefully with something for everyone.

The proceeds from the Auction will go to the Church as, unfortunately, we were recently landed with an unforeseen expense and paying for this has caused us a few headaches. We would very much appreciate your help as bidders and buyers on the night – or even with offers to provide a service.

I will publish more details in the June magazine, meanwhile if you have anything to offer in the way of help, please contact me, Sylvie Short, on 01945 774443.

**Come and join us – it should be fun.**



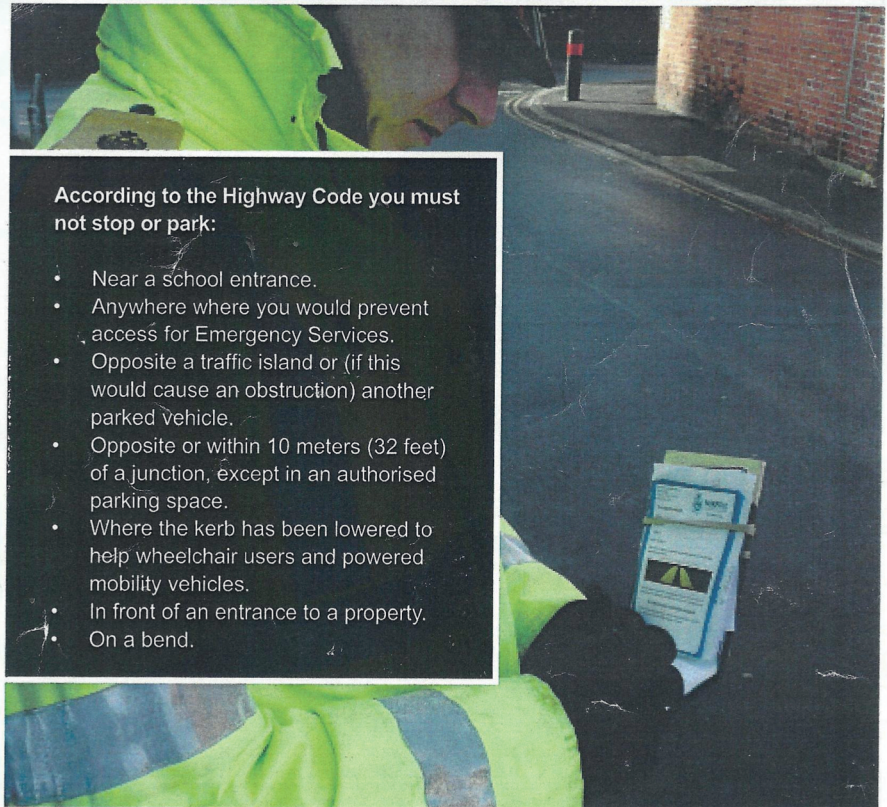
**WALKERS  
BE AWARE!**

There have been a number of recent incidents where loose dogs on March Riverside have attacked and bitten passers by. These have been reported to the Police who have spoken to the owners and intend to take steps to ensure that these dogs are properly controlled but if you have a problem with them running out and behaving aggressively please make sure that the Police know about it by phoning 101 or by email to [sntdownhammarket@norfolk.pnn.police.uk](mailto:sntdownhammarket@norfolk.pnn.police.uk)

Prue Lester

**INCONSIDERATE & ILLEGAL PARKING**

Norfolk Constabulary encourages road users to park safely and legally to keep the roads safe for all users. Thank you for your cooperation.



According to the Highway Code you must not stop or park:

- Near a school entrance.
- Anywhere where you would prevent access for Emergency Services.
- Opposite a traffic island or (if this would cause an obstruction) another parked vehicle.
- Opposite or within 10 meters (32 feet) of a junction, except in an authorised parking space.
- Where the kerb has been lowered to help wheelchair users and powered mobility vehicles.
- In front of an entrance to a property.
- On a bend.



**NORFOLK**  
CONSTABULARY  
*Our Priority is You*

Contact the police on **101**  
Always dial **999** in an emergency



[www.norfolk.police.uk](http://www.norfolk.police.uk)

**Navrady's**  
**OF UPWELL**

GOOD FOOD - GOOD VALUE

Opening Hours

Monday	Closed
Tuesday	4.00pm - 9.00pm
Wednesday	4.00pm - 9.00pm
Thursday	4.00pm - 9.00pm
Friday	11.00am - 1.30pm 4.00pm - 9.00pm
Saturday	11.00am - 1.30pm 4.00pm - 9.00pm
Sunday	Closed

10% Discount Given On All Telephone Orders Over £16

105 School Road, Upwell, Wisbech  
**(01945) 772398**

**JUST WINDOWS**  
**(01945) 474373**

**uPVC DOUBLE  
GLAZED WINDOWS**

**QUALITY AND VALUE**

**THE BARN**  
**Collets Bridge, Elm**

**Telephone 01945 474373**

# Upwell Village Hall

Upwell Village Hall has many & varied roles within our village!



It is a regular meeting place for no less than ten different interest & hobby groups; a place to make & meet friends while doing the things that you enjoy.

It also hosts some very special events.



On **April 17<sup>th</sup>** we look forward to an evening with TV auctioneer David Palmer, who will entertain us with tales of auction life in his own inimitable style.

Wine & cheese will be served, there will be time for questions and a small selection of interesting items will be subject to valuation.

Tickets at £5 are on sale now!



On **May 7<sup>th</sup>** the hall moves in to 'official' mode, as the local polling station. Don't forget to come along & cast your vote – the hall will be manned all day.



On **June 7<sup>th</sup>** Upwell Village holds its very first Yard Sale!

Upwell Village Hall will act as a hub where you can acquire the all important map detailing homes with goods for sale. You can enjoy tea, coffee & cake at the hall while you plan your route!

If you have stuff to sell & want to be included in the map - get in touch now!



And then there are the celebrations!

It's a great place for Weddings, Christenings & all kinds of parties.

**Tel. Alex on: 01945 772354 for details.**



# UPWELL PLAYING FIELD

*Registered charity 300425*

Spring is on its way! Thursday car boot sales will resume on 2<sup>nd</sup> April. Booters 8am buyers 9am, teas, coffees etc., available, as are toilets and disabled parking. All pitches £5. No need to pre-book.



100 Club tickets will go on sale shortly, £12 for the year with a monthly draw. Contact John Spikings or Ros Shorting. All winners published in Welle-in-Touch monthly.

First major date is the AGM on 14<sup>th</sup> April in the pavilion at 7.30pm, all welcome

Horse and Pony Shows: First for the year is on Saturday 18<sup>th</sup> April, in-hand classes and ridden with some "fun"

classes in between. First in-hand class 9.30am approximately. Schedules will be available locally or on Upwell Playing Field Committee Horse and Pony Show facebook page.

Other dates for Horse and Pony Shows are :Saturday June 20<sup>th</sup>, July 18<sup>th</sup>, August 22<sup>nd</sup> and September 26<sup>th</sup>.

July 12<sup>th</sup> is the date for the Summer Fayre.

September 19<sup>th</sup>, UPFC MacMillan Cancer Coffee Morning in the pavilion.

Hopefully by the time you read this magazine the daffodils should be blooming around the village and in particular the playing field please enjoy and let everyone else do the same!

During the winter months things have been reasonably quiet, work behind the scenes carried on with monthly meetings and

preparations for future events.

One event held during the winter was our

annual Valentines Dance, a financial and

socially successful evening with

proceeds of £473 going towards the

pavilion fund for further work to be

carried out.

We are always looking for raffle prizes, help to serve teas, etc., please contact Ros 01945 773604.

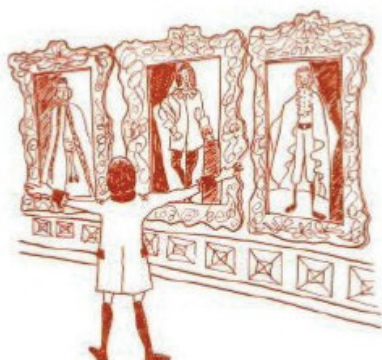


**Ros Shorting.**

**Upwell Gilbert and Sullivan Society Presents**

## Ruddigore

Or The Witch's Curse



Thursday 23rd, Friday 24th and  
Saturday 25th April 2015

**Box Office: 01945 773070**

Outwell Methodist  
Church at 7:30pm

Adults- £7  
Children- £4

The Baronets of Ruddigore have been cursed by a witch. Each Baronet in turn, as he succeeds to the title, must commit a deadly crime a day – or die in agony. To escape his dreadful fate, the latest incumbent, Sir Ruthven Murgatroyd, disguises himself as Robin Oakapple, a farmer. Only two people know his true identity, his faithful servant, Old Adam Goodheart and his foster brother, Richard Dauntless, a seaman. Robin is in love with the beautiful Rose Maybud and wants to marry her, but his future plans appear doomed when his true identity is revealed.

Stage Production is by John Hollands and Musical Direction by Pat Askew.

Although one of the lesser known scores, this is nevertheless a wonderful show, containing witty dialogue and fantastic music. A show for the whole family (parts are scary so we recommend all children are accompanied by as many adults as they can possibly bring with them !).

This is a show that must not be missed..... SO DON'T! Call the box office now.

# NOTICE OF ELECTION

## King's Lynn and West Norfolk Election of Borough Councillors

for the Wards listed below

Wards	Number of Councillors to be elected	Wards	Number of Councillors to be elected
Airfield	Two	North Wootton	One
Brancaster	One	Old Gaywood	One
Burnham	One	Priory	One
Clenchwarton	One	Rudham	One
Denton	Three	Snettisham	Two
Dersingham	Two	South and West Lynn	Two
Docking	One	South Downham	One
Downham Old Town	One	South Wootton	Two
East Downham	One	Spellowfields	Two
Emneth with Outwell	Two	Springwood	One
Fairstead	Two	St. Lawrence	One
Gayton	One	St. Margarets with St. Nicholas	Two
Gaywood Chase	Two	Upwell and Delph	Two
Gaywood North Bank	Three	Valley Hill	One
Grimston	One	Walpole	One
Heacham	Two	Walton	One
Hilgay with Denver	One	Watlington	One
Hunstanton	Three	West Winch	Two
Mershe Lande	One	Wiggenhall	One
North Downham	One	Wimbotsham with Fincham	One
North Lynn	Two	Wissey	One

- Forms of nomination may be obtained from the Returning Officer, King's Court, Chapel Street, KING'S LYNN, PE30 1EX who will, at the request of an elector for any electoral area prepare a nomination paper for signature.
- Nomination papers must be delivered to the Returning Officer, King's Court, Chapel Street, KING'S LYNN, PE30 1EX on any day after the date of this notice, during normal office hours but no later than **4 pm on Thursday, 9th April 2015**. (Office opening hours are Monday, Tuesday, Thursday 8.45am – 5.15pm, Wednesday 9.30am – 5.15pm and Friday 8.45am – 4.45pm)
- If any election is contested the poll will take place on **Thursday, 7th May 2015**.
- New postal vote applications (including proxies applying to vote by post), changes or cancellations to existing postal, postal proxy or proxy votes must reach the Electoral Registration Officer at King's Court, Chapel Street, KING'S LYNN, PE30 1EX by **5 pm on Tuesday, 21st April 2015**.
- New applications to vote by proxy (not postal proxy) at this election must reach the Electoral Registration Officer at King's Court, Chapel Street, KING'S LYNN, PE30 1EX by **5 pm on Tuesday, 28th April 2015**.
- Applications to vote by emergency proxy at this election on the grounds of physical incapacity or for work/service reasons must reach the Electoral Registration Officer at King's Court, Chapel Street, KING'S LYNN, PE30 1EX by **5 pm on Thursday, 7th May 2015**. The physical incapacity must have occurred after **5 pm on Tuesday, 28th April 2015**. To apply on the grounds of work/service, the person must have become aware that they cannot go to the polling station in person after **5 pm on Tuesday, 28th April 2015**.

Dated Monday 16 March 2015

R Harding  
Returning Officer



## *Make a Difference in Your Community - Become a Parish Councillor*

*There are 10,000 community, parish and town councils in England and Wales, controlled by Acts of Parliament and they are responsible for the most local of matters. Importantly, they can "precept" - raising a sum collected with the council tax each year to provide facilities and services for local people.*

Parish, town and community councils in England and Wales have a number of basic responsibilities in making the lives of local communities more comfortable, many of which are often taken for granted. Essentially these powers fall within three main categories: - representing the whole electorate within the parish; delivering services to meet local needs; and striving to improve quality of life in the parish. Parish councils can also comment on planning applications - they are statutory consultees and can be represented at public inquiries.

### *The Role of a Councillor*

#### *What is a councillor?*

Councillors are elected to represent the entire parish council area. They are generally elected by the public every four years.

#### *What do councillors do?*

Councillors have three main components to their work.

**Decision making** - Through meetings and attending committees with other elected members, councillors decide which activities to support, where money should be spent, what services should be delivered and what policies should be implemented.

**Monitoring** - Councillors make sure that their decisions and those of the Borough and County Councils lead to efficient and effective services by keeping an eye on how well things are working.

**Getting involved locally** - As local representatives, councillors have responsibilities towards their constituents and local organisations. These responsibilities and duties often depend on what the councillor wants to achieve and how much time is available. They may include going to meetings of other local organisations, and organisations affecting the wider community; taking up issues on behalf of members of the public and meeting with individual residents in their own homes.

#### *How much time does it take up?*

Quite often councillors say that their duties occupy them for about three hours a week. Obviously there are some councillors who spend more time than this - and some less, but in the main, being a community, parish and town councillor is an enjoyable way of contributing to your community, and helping to make it a better place to live and work.

### *Am I qualified?*

Yes - most people are. However there are a few rules.

#### **You must be:**

- A British subject, or a citizen of the Commonwealth or the European Union;
- On the 'relevant date' (ie the day on which you are nominated, or if there is a poll on the day of the election) be 18 years of age or over.

#### **Also:**

- Be a local government elector for the Council area for which you want to stand on the 'relevant date';
- **or** have occupied as owner or tenant any land or other premises in the council area during the whole of the 12 months preceding that day;
- **or** had your principal or only place of work in the council area during that same period;
- **or** have resided in the council area during that 12 month period;
- You can also satisfy the criteria to be elected if you have lived in the council area or within 4.8km of it for the whole of the 12 months preceding the 'relevant date.'

#### **You cannot stand for election if:**

- You are the subject of a bankruptcy restriction order or interim order;
- **You have, within five years before the day of the election, been convicted in the United Kingdom of any offence and have had a sentence of imprisonment (whether suspended or not) for a period of over three months without the option of a fine;**
- You work for the Council you want to become a Councillor for (but you can work for other local authorities that represent the same area).

#### *Further information*

Visiting your council is the best way to find out what happens there. The Councillor nomination period closes on 9 April at 4pm - your parish council can supply nomination forms or these can be downloaded from the Borough Council website.

#### *Your Parish Council:*

*contact details on the back page.*

# NOTICE OF ELECTION

## King's Lynn and West Norfolk Election of Parish Councillors

for the Parishes listed below

Parishes	Number of Parish Councillors to be elected
Tottenhill	Seven
Upwell	Thirteen
Walpole	Eleven
Walpole Cross Keys	Eight
Walpole Highway	Eight
Walsoken (Main Ward)	Nine
Walsoken (North Ward)	One
Watlington	Eleven
Welney	Eight
Wereham	Seven
West Acre	Seven
West Dereham	Seven
West Rudham	Seven
West Walton	Eleven
West Winch (Setchey Ward)	One
West Winch (West Winch Ward)	Eleven
Wiggenhall St. Germans	Ten
Wiggenhall St. Mary Magdalen	Nine
Wimbotsham	Eight
Wormegay	Seven
Wretton	Seven

- Forms of nomination may be obtained from the Clerk to the Parish Council or from the Returning Officer, King's Court, Chapel Street, KING'S LYNN, PE30 1EX who will, at the request of an elector for any electoral area prepare a nomination paper for signature.
- Nomination papers must be delivered to the Returning Officer, King's Court, Chapel Street, KING'S LYNN, PE30 1EX on any day after the date of this notice, during normal office hours but no later than **4 pm on Thursday, 9th April 2015**. (Office opening hours are Monday, Tuesday, Thursday 8.45am – 5.15pm, Wednesday 9.30am – 5.15pm and Friday 8.45am – 4.45pm)
- If any election is contested the poll will take place on **Thursday, 7th May 2015**.
- New postal vote applications (including proxies applying to vote by post), changes or cancellations to existing postal, postal proxy or proxy votes must reach the Electoral Registration Officer at King's Court, Chapel Street, KING'S LYNN, PE30 1EX by **5 pm on Tuesday, 21st April 2015**.
- New applications to vote by proxy (not postal proxy) at this election must reach the Electoral Registration Officer at King's Court, Chapel Street, KING'S LYNN, PE30 1EX by **5 pm on Tuesday, 28th April 2015**.
- Applications to vote by emergency proxy at this election on the grounds of physical incapacity or for work/service reasons must reach the Electoral Registration Officer at King's Court, Chapel Street, KING'S LYNN, PE30 1EX by **5 pm on Thursday, 7th May 2015**. The physical incapacity must have occurred after **5 pm on Tuesday, 28th April 2015**. To apply on the grounds of work/service, the person must have become aware that they cannot go to the polling station in person after **5 pm on Tuesday, 28th April 2015**.

Dated Monday 16 March 2015

R Harding  
Returning Officer



Are you 65 or over? Need information or advice on things to do, getting out and about, staying safe and well or caring for someone, then...

**ASK  
LILY**



**Living Independently in Later Years**  
a directory of services, activities, advice and guidance for older people living in West Norfolk

Available online at [www.asklily.org.uk](http://www.asklily.org.uk)  
or by calling 01553 616200



Borough Council of  
King's Lynn &  
West Norfolk



## Lode Orchard Seasoned Hardwood Logs



01945 773279 or 07790 696036

## AGRIMECH SERVICES

Electrical and Mechanical Engineers



UK SALES, SERVICE & SUPPORT

HELPING YOU MEET  
THE CHALLENGES OF  
CHANGING TIMES IN  
BRITISH FARMING



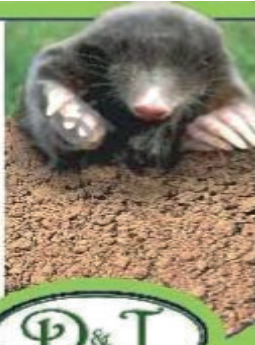
Passionate about machinery automation, completely dedicated to customer service

01354 638222  
info@agrimech.co.uk  
www.agrimech.co.uk

BAG STITCHER SYSTEMS  
WEIGHING & PALLETISING EQUIPMENT  
GRADING & HANDLING EQUIPMENT  
PLC PROGRAMMING  
SERVICE & REPAIRS

[www.dandjtransport.co.uk](http://www.dandjtransport.co.uk)  
**AG GREG ATE SUPPLIES**  
01354 740249

- SAND, GRAVEL, BALLAST
- GRANITE, BARK, SLATE
- TOPSOIL, LIMESTONE OPC
- BRICK BATS & TARMA C PLANINGS
- DELIVERD OR COLLECTED
- SAME DAY/NEXT DAY DELIVERY
- LOOSE OR BAGGED
- FROM 1 TONNETO 29 TONNES
- MUCK A WAY SERVICE



01354 740249

### CHIROPODY & BEAUTY BY JOANNE SEATON

MSSch MBcha BABTAC HPC registered

- ❖ Over 25 years' experience
- ❖ A wide range of Beauty treatments available
- ❖ Luxury Chiropody treatment
- ❖ Neals Yard Remedies
- ❖ Award winning Matis skincare
- ❖ Candles & other quality gifts available

By Appointment Only

Villeneuve · Basin Road · Outwell

01945 774022 / 07881432379

joanne@villeneuve.plus.com

[www.joanneseaton.co.uk](http://www.joanneseaton.co.uk)

## COULD YOU BENEFIT FROM INDEPENDENT FINANCIAL ADVICE?

If you can answer 'yes' to any of the following questions you could benefit from independent financial advice.

- 1 Could your savings and investments be working harder for you?
- 2 Are you worried you aren't paying enough attention to your plans for retirement?
- 3 Worried about the wellbeing of your family should the unexpected happen?
- 4 Have you taken out life assurance or an income protection policy in the last 5 years?
- 5 Have you invested money into an investment or pension without a review from the provider in the last 6 months?
- 6 Do you like the thought of a flexible advice service that can fit around your lifestyle and meet your needs?

Why not enjoy the peace of mind that comes from receiving jargon-free advice on the most appropriate financial products for your personal circumstances.

For a free initial meeting contact: **Colin Freer**

T. 07738 120256 F. 08452 991298 E. ColinFreer@thinkpositive.co.uk

Salts Road, West Walton, Wisbech, Cambs, PE14 7ED

The value of investments and pensions can fall as well as rise, and you could get back less than you invested.

Positive Solutions (Financial Services) Ltd. is authorised and regulated by the Financial Conduct Authority. Registered as a Limited Company in England and Wales No. 3276760. The Financial Conduct Authority does not regulate advice on some taxation matters.





## Alive in Upwell

### A personal view of living here

“Mind how you go now,” then turning to her son, “Go on, see her across the road.”

“Oh you are a good boy,”

Holding tightly on to her walking frame, the old lady gratefully accepted help from the young lad who guided her gently across the street while his mum returned to baking her pies.

The name is fun, something normally associated with feeding horses, but in Upwell provides just the right sustenance for busy working people needing a midday snack. Nothing too fancy, good wholesome fare, food prepared and cooked on the premises, the aromas wafting out to tempt the passerby, offering somewhere warm to shelter for a while on a cold winter’s day, have a bit of banter over the baguettes then leave with one stuffed full of bacon.

Upwell is an attractive village – not pretty as in duck-pond-village-green-surrounded-by-cream-washed-beamed-cottages-topped-with-thatch-and-roses-round-the-door sort of way, but would we want that? Upwell is earthy not flowery, though there are few more glorious sights anywhere than our ribbon of river flanked by daffodils in the spring. Pretty – beautiful in fact – Upwell’s shining moment.

Upwell is solid, not twee, pigskin, not silk, but thinking of the old adage do we really want silk purses? A sturdy leather wallet is of far more use – and enduring, like Upwell.

“You mean you’ve got THREE butchers in your village?”

“Well...yes”

“And they all make a living?”

“I think so. We’ve also got grocery and veg. shops, a Post Office, a couple of hairdressers a fish and chip shop and two pubs.”

My friend looked amazed and just a teeny bit envious. The village where she lives is small and pretty but with no shops at all and just one pub. I loathe supermarkets and love shopping locally, spending Saturday mornings walking about chatting to people and picking up all the bits and pieces I need for a person living alone.

Upwell is a friendly place; a large village, but not too big to be a community that cares. There are clubs and groups catering for most interests and hobbies where we can find like minded people to share our enthusiasm – too many to list here – but the activities are all recorded regularly in our two local magazines.

As you will find anywhere there are, of course, negative aspects to the village. I would much rather the huge number of lorries didn’t trundle through as they do, shaking our buildings to their very foundations. But all in all I want to celebrate the life we’ve got here as I know it’s just too easy to take things for granted, only appreciating them when they’ve gone.

“I really love living in Upwell,”

“So do I.”

Listening to the above exchange a while ago I stayed silent as I wasn’t sure. My response now would be a resounding,

“Yes...I do too.”

Sylvie Short



David Pooley and family.

Winners of the 2014 Christmas Lights Competition



Upwell Parish Council

### To Rent Garden Allotments

The Parish Council has a number of garden allotments to rent on its Stonehouse Road site.

Rent is £7.50 per year

Call for more information

TEL: 01945 774272



## HARNWELL ELECTRICAL LTD

**Electrical Engineers & Contractors**  
Industrial, Domestic, Agricultural & Commercial Installations.



THE GRANARY, ST PETERS ROAD, UPWELL,  
WISBECH, CAMBS PE14 9EH  
Telephone: (01945) 773207

### Want to Advertise Here?

Over 1000 copies to  
Houses In Upwell, Three Holes  
And Lakesend four times a year  
1/8 page: £30 per Issue/ £100 per Year

Other Sizes pro-rata

Contact Parish Clerk (see Back Page)

## G & B Superstore

Serving the Local Community  
Town Street, Upwell PE14 9DF  
Tel: 01945 773507

### Opening Hours

Mon-Sun 5.30am- 10.00pm

Newspapers • Wines from the Beers  
Alcohol & Beers • Groceries • Food to go  
Lottery • Pay Point • Magazines • Cash Point

And local deliveries available now

## AUCTION

### AT THREE HOLES VILLAGE HALL

Every Friday, viewing all day.  
Auction Starts at 6. Pm.

Bring in your unwanted items for auction from  
**9.00 a.m.**

No Need to book.  
Hot and Cold meals, snacks & drinks.  
All day breakfasts from 11 a.m.

Postcode PE13 9JR  
Phone Denny 07751 491268 or 01406 363433

## Upwell Royal British Legion

A new committee has been elected to run Upwell British Legion. We are offering the premises to groups and societies at a competitive rate.

Anniversary's, Weddings, Wakes, Christenings & Children's Parties, Bar & Separate Meeting Room

Please contact Alison on 07519949529 or

Pauline on 01945 773276

Charity Number 219279



8 York Row, Wisbech PE13 1EF  
www.mcp-law.co.uk  
01945 464331

### Services provided:

Family, Property, Crime, Commercial, Employment,  
Personal Injury, Wills & Probate, Dispute Resolution

Town centre location Fixed fees available  
Home visits available on request



METCALFE COPEMAN & PETTEFAR SOLICITORS

## Crown Service Station (Outwell) Ltd

### MOT's Servicing Repairs

Stuart, Kevin and Michael will be pleased to help you with any of your motoring problems. Give us a call or pop round.

We are now situated on Isle Road, Outwell, PE14 8TD

Class 4 & 7 MOT's now undertaken

**01945 773553**

garage@thecrownlodgehotel.co.uk

## A.R. CLINGO FUNERAL DIRECTORS

- † Family Independent Business
- † Private Chapel of Rest
- † Personal Attention
- † 24 Hour Service

Full estimates given at all times

Pinfold House  
St. Peter's Road  
Upwell, Wisbech

Phone: 01945 772502

Golden Charter  
Funeral Plans



## THE GREEN FINGERS GARDENING CLUB

Here we are at the start of another spring. The sun is shining, the snowdrops and aconites are coming to an end and the crocuses and daffodils are beginning to come into flower. All we need is some dry weather so we can start cutting the grass and really getting into the swing of things.

The first meeting of the Club was a disappointment as the Speaker did not turn up so we didn't have the planned talk on 'Willow Supports for Plants' which we were expecting. However, we enjoyed the evening, catching up on all the news and discussing our garden plans for this year. It was a nice friendly, relaxed evening. February was much more successful. The Speaker was Jackie Bennett and she gave a very interesting talk on 'Writers and their Gardens'. It was different from our usual talks but very enjoyable. We hope Jackie will come again sometime.

The Club are arranging a coach trip to the RHS gardens at Hyde Hall, Chelmsford in June. The coach is almost full, all we need is a nice sunny day. Fingers crossed.

In March Dr. Charles Nelson will be giving a talk on the subject of 'Heathers', and in April the Speaker will be Joe Sharman, talking about 'Spring and Summer Colour'.

If you are interested in coming along to a meeting, we would be pleased to meet you. We are not expert gardeners, just keen and friendly.

**Meetings are held at Upwell Methodist Hall on the 3<sup>rd</sup> Tuesday in the month.** The next meeting is 17<sup>th</sup> March at 7.00pm for 7.30pm.

If you ring **Gussie on 01945 772586** she will be able to answer your questions and give you further information.

### RACHEL LUNN HOLISTIC HEALTH & BEAUTY

- \* REFLEXOLOGY
- \* LAVA SHELL MASSAGE
- \* STRESS THERAPY
- \* INDIAN HEAD MASSAGE
- \* HOPI EAR CANDLES
- \* BEAUTY TREATMENTS

*Home visits available by appointment*

Rachel Lunn	Babtac
Phone: 01945 772283	
New Road, Upwell, PE14 9BP	

## W. Feary Painter & Decorator

Good Work At Reasonable Rates  
No Job Too Small

Tel: 01945 583381  
34 Clarence Road - Wisbech



## DOMESTIC HEATING OIL

*Quality comes as standard!*



DOMESTIC HEATING OIL,  
GAS OIL & DERV



QUALITY SERVICE



EXCELLENT PRICES



PROMPT DELIVERY BY OUR  
FLEET OF 11 TANKERS



ESTABLISHED OVER 40 YEARS

CALL US  
FREE ON

PETERBOROUGH  
0800 083 7861

HUNTINGDON  
0800 083 7862

WISBECH  
0800 083 7863

OUNDLE  
0800 083 7864

WWW.SS-MOTORS.CO.UK

AND ALL SURROUNDING AREAS



## THREE HOLES VILLAGE HALL & PLAYING FIELD

### Charity No. 304483

#### WELLE FILM PROJECT FUNDED BY THE PEOPLE'S HEALTH TRUST

The next two screenings for the Welle Film Project Cinema Club will be:

- Sunday 12 April - **What we did on our Holiday (12)** Billy Connolly, David Tennant, Rosamund Pike
- **Sunday 10 May - The Imitation Game (12A)** Benedict Cumberbatch as Alan Turing, Enigma Code breaker

**SCREENINGS start at 2pm (doors open 1.30pm).** A licensed bar and refreshments will be available. Contact Hilary 01945 773710 or Sue 01945 772824.

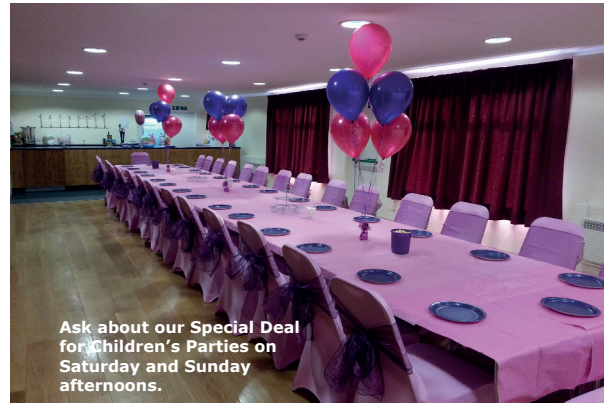
The film making aspect of the project is working hard on completing more productions. If you would like to get involved or if you have any suggestions for a community project that would make an interesting production, then please do get in touch with Sue Lowe (susan@slowe9.wanadoo.co.uk).

#### **EASTER BINGO in aid of Three Holes Village Hall, Sunday 22 March**

Doors open 6.30pm, Eyes down at 7.00pm. Hosted by Carol & Eddie Manning.

#### **Hall Hire**

For details of how to hire the hall for all purposes, please contact Eddie in the first instance (01945 773961). General enquiries can be made to Rita (01945 772236), Sally (01945 351228) and Sue (01945 772824).



[www.threeholesvillagehall00.org.uk](http://www.threeholesvillagehall00.org.uk)

Go to our website for full information about the Hall and facilities, fees and arrangements for hire and news about activities and events.

Facilities include:

- Capacity of up to 200 people
- Stage
- Well equipped, modern kitchen
- Digital projector, Large electric screen
- DVD player, CD player, Tuner, PA system, mic's, mixer, amplifier.
- Broadband/BT WiFi (ask for details)

**Three Holes Bowls Club** has regular weekly club nights on Thursday each week at 7pm to 9pm at the village hall in Three Holes. They are always pleased to see new members so do come along and join in this fun, social night out. Just call Yvonne Drew on 07716 421563 or Hazel Medlock on 01945 772327 for more details

**OUTWELL FIRE STATION IS AT RISK OF  
CLOSING IF WE ARE UNABLE TO RECRUIT  
SUFFICIENT CREW MEMBERS TO ENABLE  
US TO PROVIDE THE VITAL COVER TO THE  
COMMUNITY THAT IS EXPECTED FROM  
US.**

**IF YOU HAVE ANY QUESTIONS PLEASE  
FEEL TO CONTACT ME USING EITHER MY  
MOBILE OR EMAIL ADDRESS BELOW.**

*WM Glen Gates  
Outwell Fire Station;  
Churchfield Road,  
Outwell.  
Mobile:- 07946331359  
glen.gates@fire.norfolk.gov.uk*

**Norfolk Fire and Rescue Service**

**Join the**

## **FIRE SERVICE**

**Protect your Community**  
Become a Retained Firefighter in

## **Outwell**

We have vacancies for retained [on-call] firefighters at Outwell Fire Station. We are committed to developing a workforce that reflects the communities we serve and particularly encourage applications from women, and people from a wide variety of ethnic, cultural and national backgrounds. There are no height or age restrictions and you do not need to be super strong. Our recruitment process is designed around the requirements of the role and our training provides the skills and confidence needed to be a firefighter.

If you are over 18 years of age and live or work within 5 minutes travelling time of Outwell Fire Station we would love to hear from you.

There are a number of ways to find out more - you can pop down to the station on Churchfield Road for a no obligation chat on our weekly training night - Wednesday 6:00 to 9:00 pm; contact Watch Manager Glen Gates on: 07946 331359 or via e-mail [glen.gates@fire.norfolk.gov.uk](mailto:glen.gates@fire.norfolk.gov.uk); or you can visit our website: [www.norfolkfireservice.gov.uk](http://www.norfolkfireservice.gov.uk)

Help your community, improve your skills and get paid for it at the same time, join the crew at

**OUTWELL FIRE STATION**



[www.norfolkfireservice.gov.uk](http://www.norfolkfireservice.gov.uk)

## WALK UPWELL – WE’RE CHANGING – LET’S WALK!!

Our numbers have decreased over the last couple of years, but we still have a core group of walkers keen to get out there. So why not join us? There is no longer a membership fee as we have decided to walk informally just as a group of friends. The walks will be planned and guided by whichever organisers have completed the pre-walk, and for walks outside the immediate locality transport will be shared. When accepting a lift, we have agreed to contribute towards the cost of the driver’s petrol, and the method of doing this will be explained to any new walkers who join us. As you will see from the programme, the walks are of varying lengths as we have tried to cater for all needs – those who enjoy a short stroll as well as people who want to stretch their legs and go a bit further. Every effort will be made to adhere as closely as possible to the mileage advertised in the published programme.

**All are welcome.** The main difference between ‘Let’s Walk’ and ‘Walk Upwell’ is that we all accept we are walking at our own risk. There is no insurance cover for the group.

If you are interested in joining us or just finding out more please contact:

Allan Gullon tel. 01945 772354

Sylvie Short tel 01945 774443

Below is a series of walks we are suggesting for the first few months of this year.

The local walks make use of the numerous footpaths around Outwell and Upwell allowing us to view the villages from different perspectives as well as helping to keep the paths open. The more distant and longer walks try to explore other parts of Norfolk, Lincolnshire and Cambridgeshire and require car transport and sharing.

For the “village” walks we will meet at 1:30pm in the car park next to the Village Hall in Upwell, for the walks needing car transport we will meet in Sylvie Short’s drive behind “The Coach House” next to Brian Tweed’s.

Please be there with a few minutes in hand to allow for discussions regarding car sharing and directions.

### LET’S WALK PROGRAMME OF WALKS April to May 2015

<u>Date &amp; Meeting Time</u>	<u>Location</u>	<u>Approximate Length</u>	<u>Guide</u>	<u>Driving Distance</u>	<u>Notes</u>
Sun 12 <sup>th</sup> April 10.00am VH	Village Walk	3 Miles	AG	n/a	
Fri 17 <sup>th</sup> April 10.00am SS	Cawdle Fen	6 Miles	SS / JA	19 miles	Packed Lunch
Sat 25 <sup>th</sup> April 10.00am SS	Fosdyke	5 to 6 miles	DP	27 miles	Packed Lunch and Tea at Garden Centre on way home
Sat 9 <sup>th</sup> May 1.30pm SS	Shouldham Warren	3 to 4 Miles	AG	20 miles	Please note pm start
Fri 15 <sup>th</sup> May 10.00am SS	Blakeney Point (from Cley)	7 Miles	SS / DP	54 miles	Car Park Charge at NWT Packed Lunch
Sun 24 <sup>th</sup> May 1.30pm VH	Village Walk	3 Miles	AG	n/a	
Fri 29 <sup>th</sup> May 10.00am SS	Ringstead and Old Hunstanton	8 Miles	AG	37 miles	Packed Lunch





## Cambridgeshire Care

**A HELPING HAND WHEN YOU NEED IT MOST**

Care in the comfort of your own home from one of the larger independent companies established in 1995. We deliver Care all over East Anglia

Maybe you are recovering from an operation and just need a little help around the house or maybe you require full time care for yourself or a loved one give Cambridgeshire Care a call and let us take care of you

From our initial free, in depth assessment to the structuring and delivering of your bespoke care package - Cambridgeshire Care will help to guide you every step of the way.

Please telephone for further information or advice

FREEPHONE 0800 7316502



5 Church Street  
Peterborough  
PE1 1XB

*The only choice for homecare*

### L HIGHBURY SCHOOL OF MOTORING L

- Learner Driver & Refresher Lessons
- Friendly, Female Instructor
- Intensive Courses
- Pass Plus Registered
- DSA Approved

MOBILE: 077233 20333

EMAIL: [highburysom@gmail.com](mailto:highburysom@gmail.com)

*Bramley House*



**Cattery**

An exclusive ten chalet holiday home where your pet will receive 5 Star care and attention

Call Angie on 01354 638071 or 07810 563 523

## GLEN STITTLE

Complete Bathroom Installations



General Plumbing  
Wall & Floor Tiling  
Kitchens Installed

07845 601076 - Day  
01945 773638 - Evening  
[www.glenstittle.co.uk](http://www.glenstittle.co.uk)

## Brian Tweed

Family Butcher  
Town Street, Upwell.

**Tel: 01945 773248**

Fresh beef, pork, lamb and poultry.  
Our specialities are home made sausages and burgers.  
Home cooked ham, roast beef, roast pork and haslets.

## Peter J Brown & Son Electrical Contractor

Est 1966

- Commercial and Domestic
- Installations and Maintenance
- Periodic Test and Inspections



Tel: 01945 773377 / 772368  
Mobile: 07860 293837

## Beauty Treatments by Jane

**JESSICA\***  
Manicures & Pedicures



**dermalogica®** skin  
skin care system

N.V.Q. - o.p.i. - Babcac  
Rose Cottage, Christchurch,  
Telephone: 01354 638378

UPWELL PARISH  
COUNCIL

A QUALITY  
COUNCIL FOR A  
QUALITY SERVICE

Chairman:  
Prue Lester 01945 772234

Deputy Chair:  
Jill Gooch 01945 773301

Councillors:  
Steven Calton 773544  
Brian Carr 774145  
Chris Crofts 773519  
Andrew Harrison 773735  
Keith Harrison 772661  
Margaret Hodgson 772898  
Frank Humm 773595  
David Pope 773054  
Bill Pugh 773129  
Chris Robinson 07836 606098  
Ros Shorting 773604

Your Borough Councillors Are:  
David Pope 01945 773054  
Vivienne Spikings 01945 772248

Your County Councillor Is:  
Harry Humphrey 01945 430539

Clerk:  
Kate Bennett 01945 774272  
upwellpc@googlemail.com  
3 Sayers Crescent  
Wisbech St. Mary  
Cambs  
PE13 4AS

**New Website!!**

**Check out our new  
website:**

[www.upwellparish.com](http://www.upwellparish.com)

Twitter: @upwellparish



## Upwell Parish Council

### Meeting Dates For 2015

Unless otherwise stated, all meetings will take place at Upwell Village Hall. The Press and Public are cordially invited to attend any meeting. Residents can address the Council at the start of the meeting but may only speak thereafter with the permission of the Chairman.

#### April

8<sup>th</sup> (Wednesday)  
Parish Assembly 6.30pm  
Full Council 7.00pm

#### May

11<sup>th</sup> AGM 6.30pm  
Full Council 7.00pm

#### June

1<sup>st</sup> Full Council 7.00pm

#### July

6<sup>th</sup> Full Council 7.00pm

## SPEEDWATCH

I'm very pleased to announce, the formation of a new Speedwatch team.

The team has already passed its police identity checks.

I will be identifying the sites for the Speedwatch in the village on Friday, 6 March, with a member of the camera partnership team. Training should then start and hopefully the team will be up and running by April.

If anybody is interested in joining. My telephone number is Upwell 773595, or, stop and talk to us if you see us out doing our traffic checks.

Frank Humm

# Parish Assembly

Wednesday 8<sup>th</sup> April 2015 at 6.30pm

## Upwell Village Hall

This is a special meeting for the **Public** to hear reports from the Parish and County Council about activities this year. Come along and meet your Parish Councillors. You can raise any issues you may have regarding the villages or ask about meetings, events or what the Parish Council does for residents. Starts at 6.30pm prompt. A Full Council meeting will follow at 7.00pm

**For more information, call the Clerk: Kate Bennett on 01945 774272 or 07825 634672**

**Email [upwellpc@gmail.com](mailto:upwellpc@gmail.com)**

**PERFECT CHOICE**  
*Soft Furnishings By Diane*

Fabrics Wallpapers Curtains Blinds Pelmets  
Cushions Upholstery Bedding Poles Tracks

West Hoathly, Main Road, Three Holes, Wisbech, PE14 9JR  
Tel: 01945 774330  
[www.perfectchoiceonline.net](http://www.perfectchoiceonline.net)