

Richland Kennel Club



WAGG'N TAIL

Newsletter

September, 2021

Officers & Committees

President	Vice-President	Recording Secretary	Corresponding Secretary	Treasurer
Mark Eby 851-2375 markebykc@gmail.com	Mark Glaman	Candee Foss 528-5743	Bonnie Ames 588-6430	Michele Murray 713-7006
Show Chairperson	Board of Directors	Judges Selection	Historian Handling Class	Newsletter Editor
Stacey Davis 546-0455 531-6402	Bruce Glenn Valerie Brown	Linda Riedel Ramblewood.ess@gmail.com	Bonnie Ames 588-6430	Janice Kusch djmitchell5@charter.net

Mark Your Calendar

**All Member
General Meeting**
Sept 2
7:30 PM
**Howard Amon
Park**
Bring a chair

**Board of
Directors
Meeting**
Sept 16
7:30PM

Handling Class
Please check the most
up-to-date COVID re-
quirements!
Mask use may be re-
quired.
Howard Amon Park
Richland Community
Center lawn.
6:30 PM !!!!

**TC Fall Dog
Show**
Entry opened
on
August 20th.

**Richland Commu-
nity Center lawn.**
Directions: Turn Right
off of George Washing-
ton Way onto Bradley
Blvd (like you would go
to the Hampton Inn). At
the bottom of the street,
turn left into the parking
lot. Look straight ahead,
you will see club mem-
bers gathering.

Sept 1 Kim & Bruce
Glenn
Sept 8 Alyssa Paxton
Sept 15 Linda Reidel
Sept 22 Erin Story
Sept 29 Cindi McInturf

Go to:
**https://www.
barayevents.com/
enter-show**

Then scroll down to Tri-cities Cluster-Walla Walla/
Richland.

Tri City Fall Dog Show Cluster

Conformation Dog Shows
4-6 Puppy
Junior Handling
Owner Handler Series

Hosted by Richland Kennel Club and Walla Walla Kennel Club
September 30-October 3, 2021

Current Specialties:

Harrier Club of America National and Regional Specialties
Rat Terrier Club of America National 2020 and 2021 and Regional Specialties
Inland Northwest Great Dane Club
Eastern Washington German Shepherd Dog Club
Cardigan Welsh Club of America Regional Specialty

Fast Cat Performance event - double meets on Friday and Saturday, Sunday one meet only

Show Chairman

Stacey Davis
509-546-0455
QBAllee@aol.com

Superintendent

BarBay Event Services, Inc.

Overnight Parking

Michele Murray
509-713-7006
2020 Parking form.pdf
2020 Parking information.pdf

Free Admission Free Day Parking
Food trucks and other vendors on site

Canine Health Clinics

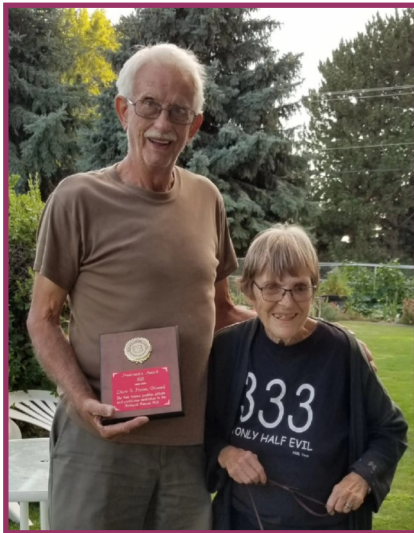


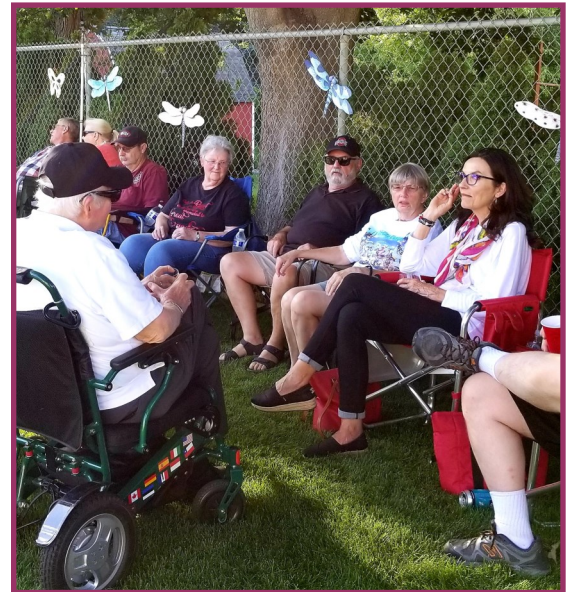
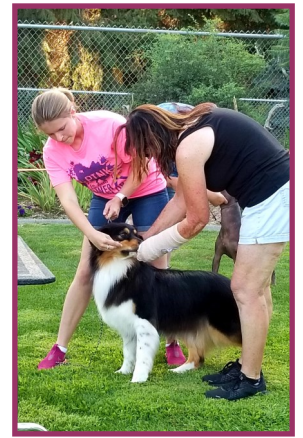
EDITOR'S CORNER

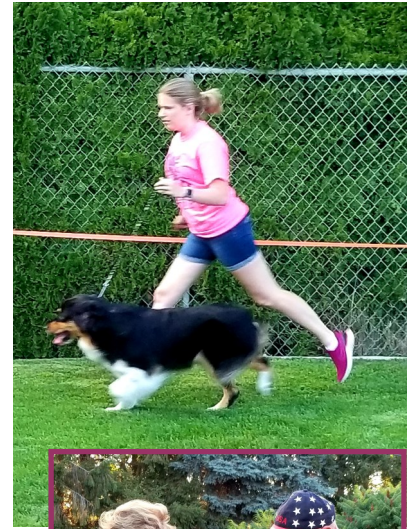
Introducing the SPECIAL EDITION of the Richland Kennel Club Newsletter for September, 2021! This month is dedicated to all of our kennel club members, their dog show successes, and most of all, the great fun and fellowship our club offers. What better way to pay tribute than by showcasing our Annual Pot Luck and Fun Match hosted by Dave and Helen Criswell last month at their lovely home in Kennewick. Of note, Dave and Helen had some pretty big accomplishments this year not only being our club's longest standing members but also receiving this year's RKC President's award for their many club contributions over the years and also celebrating their 60th wedding anniversary!

Events from this year's pot luck included the President's Award Ceremony, Puppy and adult Fun Matches with awesome prizes, and a very fun Simon Says Obedience Competition. Members shared many of their favorite dishes for a fabulous buffet and of course, there was great conversation and gorgeous dogs. The weather was in our favor so many lovely photos captured the club's fun.

Enjoy the photos and if you see one you would like to have, send me an email and I'll be happy to send you the jpeg. Also, be sure to check out the Canine Health section for how we can develop a Walking/Hiking/Travel Resource for our club!







THE BRAG BOX



Two of our very own junior handlers, **Sierra Story** and **Rylee Carlon** (who are also club members) qualified for Nationals in Florida! Congratulations ladies—making us proud!

Rylee Carlon—Kiji A Star is Born TKN “Bradley”, finished his ASCA Champion at the Beartooth ASC cluster in Red Lodge, MT. Bradley also finished his AKC Champion a couple weeks later at the Rose City Cowboy Classic in St. Paul, OR.

Remedy’s Sweet Home Caldera “Reese.” finished her Rally Novice title at 12 months.

Janice Kusch—GCH White Diamonds Dungeness Little Dipper, “Nosi,” is the #1 Norwich Terrier NOHS. Nosi also took Best In Show NOHS at the Rogue Valley Kennel Club and is currently #12 in breed.

Cindi McInturf—“Rush” earned 15 Nosework, Scent work titles between the end of June 2019 and 2020, most of them were won at her GSD National show in Loveland Colorado and team Rush won the title of “2x High in Trial” over an entry of 50 plus dogs!!

CARING THOUGHTS

Deepest sympathies to the Glaman family in the passing of Linda’s father.

Thoughts and prayers for the Ames family as Bonnie’s mother is critically ill.

Tri-City Fall Dog Show Gear

How fun and cool would you look wearing a Tri-City Fall Dog Show Cluster logo t-shirt while volunteering at the show this year?

SUPER COOL!

Call Nancy Eby for available items, sizes, and prices at **(509) 851-2403**.



PRESIDENT’S REPORT NEW CLUB BUSINESS MARK EBY

I would like to remind all Club members that the RKC Board meetings are open to all members. The date of the upcoming Board meeting is published in the newsletter, however the details of the location aren’t. If someone wishes to attend just send a note to me at markebyrkc@gmail.com.

If you have a specific subject to discuss tell me what it is and I will put it on the agenda. You can provide your input on any subject discussed, but please remember that although you are a RKC member and can vote at general meetings you cannot vote at the Board meetings.

The meeting is scheduled for 7:30.

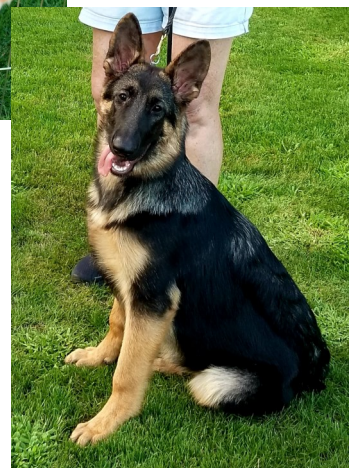
Mark

Richland Kennel Club General Meeting Minutes August 6, 2021

A special meeting was held on August 6th to elect new members.

Meeting called to order at 6:02. Purpose of the meeting was stated. Membership applications for Kelly Keophilavanh and Colette Rundle were read. Chuck Ames made a motion to except the applicants into Membership; Mark Glaman seconded the motion. All attendees voted in favor.

Meeting was adjourned at 6:05.



Richland Kennel Club Board Meeting Minutes August, 2021



Richland Kennel Club

Board of Directors Meeting, August 2021

The meeting was called to order at 7:30 PM by Pres. Mark Eby

Present: Mark Eby, Mark Glaman, Bruce Glenn, Valerie Brown, Chris Abraham, Stacey Davis.

Guests: Bob Brown, Nancy Eby, Teresa Carlon, Rylee Carlon.

Minutes approved as published. Moved, Stacey Davis, Second Bruce Glenn, Carried.

Secretary Report: No report

Corresponding Secretary Report: No Report

Treasurer's Report: Michele emailed her Report of Accounts, including Parking income.

Membership: No applications

Show Committee 2021: Stacey explained the PL delay due to AKC & BaRay problems. The Vizsla Club Regional Specialty has been added to our shows.

Will follow the latest Covid protocols for our shows .

Still trying to have Food Trucks at Columbia Park, but so far, no interest.

Lunches for Judges & Workers will be Box lunches from Panera.

The wash station equipment will be taken care of by Teresa & Rylee Carlon.

Debbie Broward will be Chief Ring Steward.

Bruce reported that there will be 20 tables available for Specialty Rings.

Also 4 Porta Johns, including a Handicap one.

Garbage bins will be provided & emptied per contract with Kennewick.

Will rent 4 Golf carts.

Trying to reach out to Tri City 4H groups for Ring Hospitality.

This will be the last year for Jr. Show Raffle. Will revisit fund raising events for 2023.

Handling Class: Still at Amon Park but time is changed to 6:30 PM

Fun Match: Thanks to Cindi McInturf for a well-run, enjoyable match.

Unfinished Business: Chris reported that the application fee for the 501-C7 IRS status is ready to file & the application fee is \$600. RKC will pay the 501-C7 application fee. Moved, Mark Glaman, Second Bruce Glenn, Carried.

Valerie gave the Nominating Committee progress report.

Executive Session at 8:30 PM

Out of Executive Session at 9:02 PM

Meeting adjourned at 9:10. Moved, Bruce Glenn, Second, Mark Glaman. Carried.

Respectfully submitted by,

Valerie Brown

CANINE HEALTH & CARE

Let's Go Walking and Hiking With Our Dogs!

Online Article Review by Janice Kusch, 8/22/2021.
References:

<https://www.seattletimes.com/life/outdoors/taking-fido-on-a-hike-know-these-tips-to-prevent-and-treat-dog-related-emergencies/>

<https://www.gopetfriendly.com>

[Hiking With Your Dog: Tips For Hitting The Trail In A Safe And Fun Way \(akc.org\)](https://www.akc.org)

Going for a walk or hike with your dog is great exercise for both you and your four-legged best friend. Now that the temperatures are starting to reside, you may want to consider one of the many wonderful hikes in our local community such as Candy Mountain, Badger Mountain, Chamna Natural Preserve, McBee Trailhead in Benton City, or the McNary National Wildlife Preserve in Burbank. These are just a snip-it of opportunities and with a little more driving there are endless possibilities.

Having lived in Richland for about 12 years, I'm still finding out about new places and ideas for fun little hikes with our three fur boys. In fact, I would like to **suggest the idea of developing a resource list of dog friendly and safe walking/hiking/travel locations in our area. By tapping into the collective knowledge of our RKC club members, I'm willing to bet there are many new places to explore! If you like this idea, please email me the names/locations of some of your favorite spots and I will compile them into a "Dog Friendly Walks, Hikes, and Travel" report for the RKC newsletter.**

If you are looking for serious inspiration on where to camp and hike with your dog, check out "Best Dog Trails In Washington" on the website <https://www.AllTrails.com>. This site lists locations all across the state that are safe and well suited for hiking with your dog. This resource is super helpful because many National Parks such as Mount Rainier do not allow dogs. In addition, some trails (such as Columbia Gorge) may not be safe due to steep ridges, loose rock, and elevation.

Gopetfriendly.com is another excellent resource loaded with information on safe hiking trails all across the U.S. including the National Parks that ARE pet friendly. This site provides detailed information on 328 road trips and travel destinations for you and your dog as well as a ton of great travel tips and gear recommendations.

Walking and hiking with your dog increases fitness, joy, and bonding but it is imperative to plan appropriately, have the right gear, and know some dog first aid. An excellent introduction to safe hiking with your dog can be found in the story of a couple who hiked with their German Shepherd in Leavenworth, Washington. For their complete story see the Seattle Times reference.

In addition, the following provides a quick overview of key safety tips and smart gear that will keep you and your dog having a fantastic time on the trail.



Gear

- Poop bags
- Rescue Harness
- A collar with ID tags and a sturdy 6-foot leash
- Sturdy harness with a handle
- A water supply and a portable water bowl
- Dog food and/or snacks
- A pet first aid kit.
- Pet-safe insect repellent
- Dog booties for hiking in rough terrain

If your dog gets injured and is unable to walk while out hiking, a rescue harness will likely be the only way to get your dog back safely to your car or home. Hikers with dogs weighing 30 pounds or more have been known to leave their dog on the trail because they were not physically able to carry their dog out. This is extremely unsafe and can be prevented by including a safety harness in your gear bag. A safety harness can condense down into a small, light weight pack that easily fits even in your jacket pocket.

First Aid Kit

- Nonstick pads, such as Telfa pads
- Bandage wrap for sprains/strains
- Saline solution
- Silver nitrate sticks to stop bleeding quickly (i.e., torn nails, paw injuries)
- An emergency muzzle

Another great medical tip is considering a leptospirosis vaccination to help safeguard your dog from contracting a waterborne disease such as giardia from drinking in lakes, rivers, or puddles while hiking.

Final recommendations include knowing the weather and monitoring it carefully during the hike. Flexibility to abort a planned hike is imperative when conditions change. In addition, dogs need to be in condition to hike. If your dog has been accustomed to the couch their first series of hikes need to be easy with low physical stress. Dogs need to build muscle and endurance for hiking and matching the trail to their ability will reduce their risk for an accident or medical emergency.

Last, always keep your dog on a leash. Chasing wildlife, getting into toxic weeds (i.e., poison oak), or misjudging a rocky slope are all good reasons to keep your dog under your control at all times.



This article review is the PROPERTY OF Richland Kennel Club (RKC). RKC does not permit reproduction of RKC Material for online use by others; DO NOT DISTRIBUTE OR REPRODUCE WITHOUT PERMISSION. RKC expressly reserves the right to deny any request. Contact Janice Kusch, RKC Newsletter Editor, at: djmitchell5@charter.net.

Disclaimer: *This article review is for informational purposes only. It does not represent or replace veterinary or medical expertise or recommendation. Please consult with your veterinarian and/or medical professional for information and medical advisement.*