



Suits & Tuxedos

FOR PURCHASE

JFW

JIM'S FORMAL WEAR

STORE COPY

We Fit Everyone!

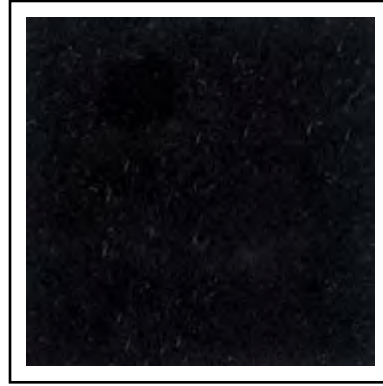


**Purchase Slim Fit Styles to
fit all shapes and sizes.**

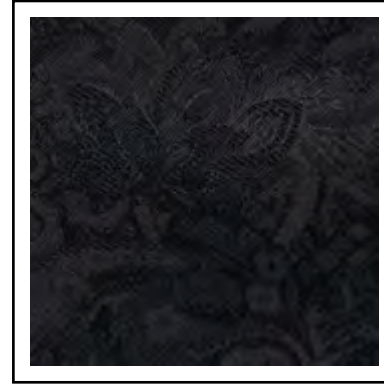
FABRIC SWATCHES

ITEMS FOR PURCHASE

Reference page number for suit & tuxedo details



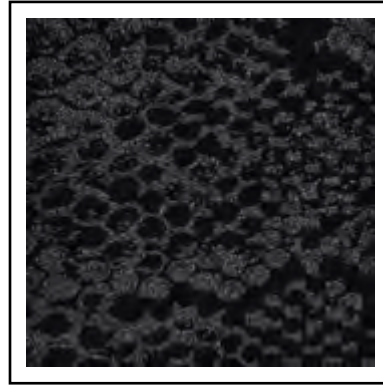
Color: Black Velvet **Style:** N8VC
Page: 22



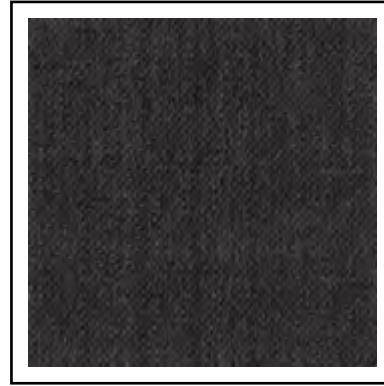
Color: Black Paisley **Style:** N182
Page: 25



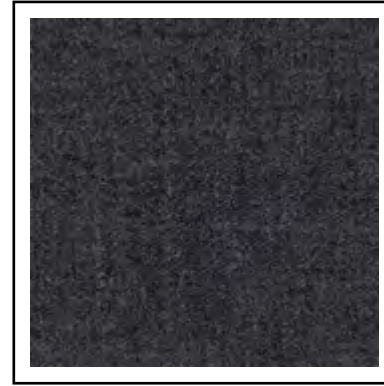
Color: Granite Paisley **Style:** N192
Page: 26



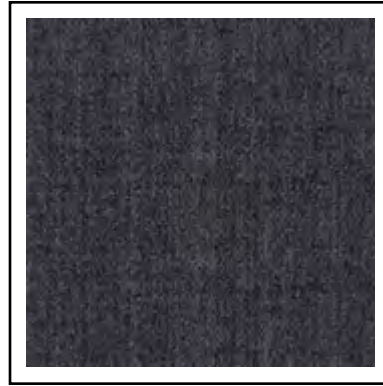
Color: Anaconda **Style:** N8AC
Page: 24



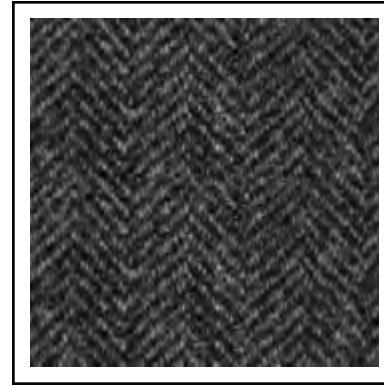
Color: Dark Grey **Style:** N8SC
Page: 15



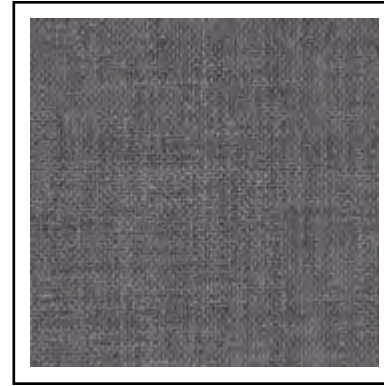
Color: Steel Grey **Style:** N392C
Page: 9



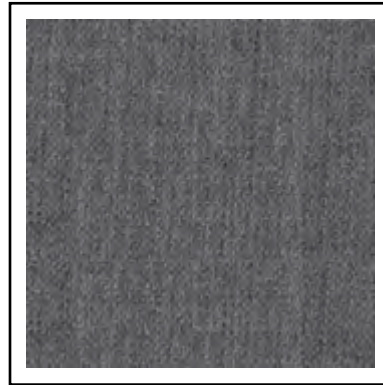
Color: Grey **Style:** N9GC
Page: 10



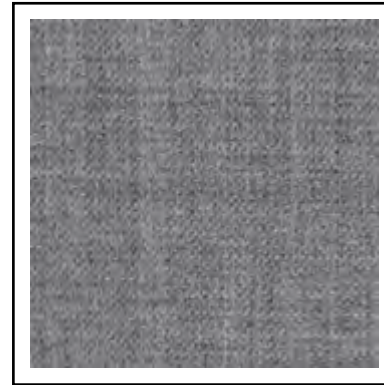
Color: Grey Tweed **Style:** NFTWG
Page: 37



Color: Medium Grey **Style:** N350C
Page: 7



Color: Light Grey **Style:** N8GC
Page: 14



Color: Heather Grey **Style:** N262C
Page: 8



Color: Hunter Green **Style:** NHGC
Page: 24

FABRIC SWATCHES

ITEMS FOR PURCHASE

Reference page number for suit & tuxedo details



Color: Navy Velvet **Style:** N3VC
Page: 23



Color: Navy **Style:** N372C
Page: 6



Color: Dark Indigo **Style:** N91C
Page: 11



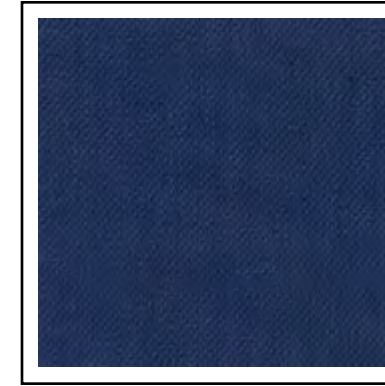
Color: Blue Tweed **Style:** NFTWB
Page: 37



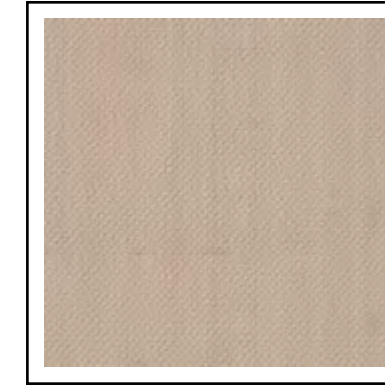
Color: Blue **Style:** N302C
Page: 5



Color: Cobalt Paisley **Style:** N132
Page: 27



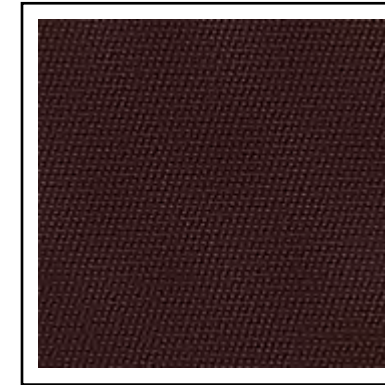
Color: Indigo **Style:** N81C
Page: 13



Color: Tan **Style:** N8TC
Page: 16



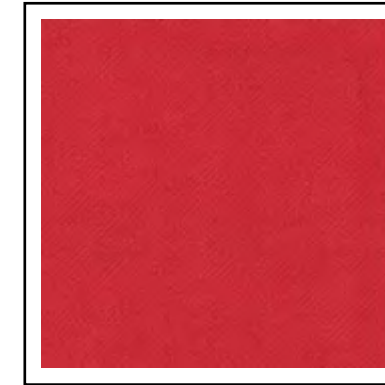
Color: Brown Tweed **Style:** NFTW
Page: 36



Color: Burgundy **Style:** N30
Page: 21



Color: Apple Red Paisley **Style:** N122
Page: 28



Color: Red **Style:** N31
Page: 21



MICHAEL KORS

**Navy Sterling
Wedding Suit**
Style N372C
for details, see page 6

**RENT
OR
BUY**
THIS STYLE

To RENT see page 24 in
the JFW Rental Catalog

MICHAEL KORS

**BLUE
PERFORMANCE
STRETCH
WEDDING SUIT**



**SEPARATES
COLLECTION**
Mix and match your coat and pant
sizes for the perfect fit.



**Blue Performance Stretch
Suit Coat | N302C**
Slim fit; 2-button; flap pockets; side-
vented; mitered sleeves with buttons

\$279.99
Coat Purchase Price

**Blue Performance Stretch
Suit Pants | N302P**
Slim fit; flat front; exact waist; belt loops;
buttons to accommodate suspenders

\$120.00
Pant Purchase Price

**Blue Performance Stretch
Fullback Vest | NF302**
4-button; adjustable back;
darted pockets

\$79.99
Fullback Vest Purchase Price

Fabric Content: CoolMax® /
Sorona® / Wool

Coat Sizing: Regular: 34-66
Short: 34-56
Long: 34-66
X-Long: 38-56
(even sizes only)

Pant Sizing: Regular: 28-66
Short: 28-66
Long: 28-66
(even sizes only)

Vest Sizing:
RXS - 5XA

Also Shown: Floral Windsor Tie | NWFPT - see page 31



**RENT
OR
BUY**
THIS STYLE

To RENT see page 29 in
the JFW Rental Catalog

MICHAEL KORS

**SUPER 130'S
NAVY
STERLING
WEDDING SUIT**

**SEPARATES
COLLECTION**
Mix and match your coat and pant
sizes for the perfect fit.



**RENT
OR
BUY**
THIS STYLE

To RENT see page 22 in
the JFW Rental Catalog

MICHAEL KORS

**MEDIUM GREY
PERFORMANCE
STRETCH
WEDDING SUIT**

**PERFORMANCE
STRETCH**

**SEPARATES
COLLECTION**
Mix and match your coat and pant
sizes for the perfect fit.

Navy Sterling Suit Coat | N372C
Slim fit; 2-button; flap pockets; side-vented; mitered sleeves with buttons

\$279.99
Coat Purchase Price

Navy Sterling Suit Pants | N372P
Slim fit; flat front; exact waist; belt loops; buttons to accommodate suspenders

\$120.00
Pant Purchase Price

Navy Sterling Fullback Vest | NF372
4-button; adjustable back; darted pockets

\$79.99
Fullback Vest Purchase Price

Fabric Content: Super 130's Wool

Coat Sizing: Regular: 34-66
Short: 34-56
Long: 34-66
X-Long: 38-56 (even sizes only)

Pant Sizing: Regular: 28-66
Short: 28-66
Long: 28-66 (even sizes only)

Vest Sizing:
RXS - 5XA

Also Shown: Floral Windsor Tie | NWFSE - see page 31

**Medium Grey Performance
Stretch Suit Coat | N350C**
Slim fit; 2-button; flap pockets; side-vented; mitered sleeves with buttons

\$299.99
Coat Purchase Price

**Medium Grey Performance
Stretch Suit Pants | N350P**
Slim fit; flat front; exact waist; belt loops; buttons to accommodate suspenders

\$130.00
Pant Purchase Price

**Medium Grey Performance
Stretch Fullback Vest | NF350**
4-button; adjustable back; darted pockets

\$79.99
Fullback Vest Purchase Price

Fabric Content: CoolMax® / Sorona® / Wool

Coat Sizing: Regular: 34-66
Short: 34-56
Long: 34-66
X-Long: 38-56 (even sizes only)

Pant Sizing: Regular: 28-66
Short: 28-66
Long: 28-66 (even sizes only)

Vest Sizing:
RXS - 5XA

Also Shown: Solid Windsor Tie | NWWFB - see page 33

**RENT
OR
BUY**
THIS STYLE

To RENT see page 37 in
the JFW Rental Catalog

ALLURE MEN®

**SUPER 130'S
HEATHER GREY
CLAYTON SUIT**



**SEPARATES
COLLECTION**
Mix and match your coat and pant
sizes for the perfect fit.

**RENT
OR
BUY**
THIS STYLE

To RENT see page 31 in
the JFW Rental Catalog

MICHAEL KORS

**SUPER 130'S
STEEL GREY
STERLING
WEDDING SUIT**



**SEPARATES
COLLECTION**
Mix and match your coat and pant
sizes for the perfect fit.

Heather Grey Clayton Suit Coat | N262C
Slim fit; 2-button; flap pockets; side-
vented; mitered sleeves with buttons

\$279.99
Coat Purchase Price

Heather Grey Clayton Suit Pants | N262P
Slim fit; flat front; exact waist; belt loops;
buttons to accommodate suspenders

\$120.00
Pant Purchase Price

Heather Grey Clayton Fullback Vest | NF262
5-button; adjustable back;
darted pockets

\$79.99
Fullback Vest Purchase Price

Fabric Content: Super 130's Wool

Coat Sizing: Regular: 34-66
Short: 34-56
Long: 34-66
X-Long: 38-56
(even sizes only)

Pant Sizing: Regular: 28-66
Short: 28-66
Long: 28-66
(even sizes only)

Vest Sizing:
RXS - 5XA

Steel Grey Sterling Suit Coat | N392C
Slim fit; 2-button; flap pockets; side-
vented; mitered sleeves with buttons

\$279.99
Coat Purchase Price

Steel Grey Sterling Suit Pants | N392P
Slim fit; flat front; exact waist; belt loops;
buttons to accommodate suspenders

\$120.00
Pant Purchase Price

Steel Grey Sterling Fullback Vest | NF392
4-button; adjustable back;
darted pockets

\$79.99
Fullback Vest Purchase Price

Fabric Content: Super 130's Wool

Coat Sizing: Regular: 34-66
Short: 34-56
Long: 34-66
X-Long: 38-56
(even sizes only)

Pant Sizing: Regular: 28-66
Short: 28-66
Long: 28-66
(even sizes only)

Vest Sizing:
RXS - 5XA

Also Shown: Solid Bow Tie | NBXNA - see page 32

Also Shown: Solid Bow Tie | NBXBL - see page 32

**SUPER 120'S
GREY SLIM FIT SUIT**

Super 120's Grey Suit Coat | N9GC

Slim fit; 2-button notch; flap pockets; side-vented

\$199.99

Coat Purchase Price

Super 120's Grey Suit Pants | N9GP

Slim fit; flat front; exact waist; belt loops; buttons to accommodate suspenders

\$80.00

Pant Purchase Price

Super 120's Grey Fullback Vest | NF9G

4-button; adjustable back; darted pockets

\$69.99

Fullback Vest Purchase Price

Fabric Content: Super 120's Wool

Coat Sizing:	Pant Sizing:
Regular: 34-66	Regular: 28-66
Short: 34-56	Short: 28-66
Long: 34-66	Long: 28-66
X-Long: 38-56	Long: 28-66
(even sizes only)	(even sizes only)

Vest Sizing:
RXS - 5XA

Also Shown:

Floral Bow Tie | NBFDB

see page 30

Cognac Oxford Shoes | NCXS

see page 43

**SEPARATES
COLLECTION**

Mix and match your coat and pant sizes for the perfect fit.



**SUPER 120'S
DARK INDIGO
SLIM FIT SUIT**

Super 120's Dark Indigo Suit Coat | N9IC

Slim fit; 2-button notch; flap pockets; side-vented

\$199.99

Coat Purchase Price

Super 120's Dark Indigo Suit Pants | N9IP

Slim fit; flat front; exact waist; belt loops; buttons to accommodate suspenders

\$80.00

Pant Purchase Price

Super 120's Dark Indigo Fullback Vest | NF9I

4-button; adjustable back; darted pockets

\$69.99

Fullback Vest Purchase Price

Fabric Content: Super 120's Wool

Coat Sizing:	Pant Sizing:
Regular: 34-66	Regular: 28-66
Short: 34-56	Short: 28-66
Long: 34-66	Long: 28-66
X-Long: 38-56	Long: 28-66
(even sizes only)	(even sizes only)

Vest Sizing:
RXS - 5XA

Also Shown:

Light Blue Microfiber Shirt | N56S

see page 35

Floral Windsor Tie | NWFSL

see page 31

**SEPARATES
COLLECTION**

Mix and match your coat and pant sizes for the perfect fit.

**SUPER 120'S
BLACK SLIM FIT SUIT**

Super 120's Black Suit Coat | N9BC

Slim fit; 2-button notch; flap pockets; side-vented

\$199.99

Coat Purchase Price

Super 120's Black Suit Pants | N9BP

Slim fit; flat front; exact waist; belt loops; buttons to accommodate suspenders

\$80.00

Pant Purchase Price

Super 120's Black Fullback Vest | NF9B

4-button; adjustable back; darted pockets

\$69.99

Fullback Vest Purchase Price

Fabric Content: Super 120's Wool

Coat Sizing:	Pant Sizing:
Regular: 34-66	Regular: 28-66
Short: 34-56	Short: 28-66
Long: 34-66	Long: 28-66
X-Long: 38-56	(even sizes only)
(even sizes only)	

Vest Sizing:
RXS - 5XA

Also Shown:
Solid Windsor Tie | NWWBL
see page 33

**SEPARATES
COLLECTION**

Mix and match your coat and pant sizes for the perfect fit.



**INDIGO
SLIM FIT SUIT**

Indigo Suit Coat | N81C

Slim fit; 2-button notch; flap pockets; side-vented

\$169.99

Coat Purchase Price

Indigo Suit Pants | N81P

Slim fit; flat front; exact waist; belt loops; buttons to accommodate suspenders

\$70.00

Pant Purchase Price

Super 120's Indigo Fullback Vest | NF81

4-button; adjustable back; darted pockets

\$59.99

Fullback Vest Purchase Price

Fabric Content: Premium Wool Blend

Coat Sizing:	Pant Sizing:
Regular: 34-66	Regular: 28-66
Short: 34-56	Short: 28-66
Long: 34-66	Long: 28-66
X-Long: 38-56	(even sizes only)
(even sizes only)	

Vest Sizing:
RXS - 5XA

Also Shown:
Floral Bow Tie | NBFBH
see page 30
Cognac Oxford Shoes | NCXS
see page 43

**SEPARATES
COLLECTION**

Mix and match your coat and pant sizes for the perfect fit.



JACKSON JAMES

**LIGHT GREY
SLIM FIT SUIT**

Light Grey Suit Coat | N8GC
Slim fit; 2-button notch; flap pockets;
side-vented

\$169.99

Coat Purchase Price

Light Grey Suit Pants | N8GP

Slim fit; flat front; exact waist; belt loops;
buttons to accommodate suspenders

\$70.00

Pant Purchase Price

Light Grey Fullback Vest | NF8G

4-button; adjustable back; darted pockets

\$59.99

Fullback Vest Purchase Price

Fabric Content: Premium Wool Blend

Coat Sizing: Regular: 34-66
Short: 34-56
Long: 34-66
X-Long: 38-56
(even sizes only)

Pant Sizing: Regular: 28-66
Short: 28-66
Long: 28-66
(even sizes only)

Vest Sizing:
RXS - 5XA

Also Shown:
Solid Windsor Tie | NWWSI
see page 33

**SEPARATES
COLLECTION**

Mix and match your coat and pant
sizes for the perfect fit.



JACKSON JAMES

**DARK GREY
SLIM FIT SUIT**

Dark Grey Suit Coat | N8SC
Slim fit; 2-button notch; flap pockets;
side-vented

\$169.99

Coat Purchase Price

Dark Grey Suit Pants | N8SP

Slim fit; flat front; exact waist; belt loops;
buttons to accommodate suspenders

\$70.00

Pant Purchase Price

Dark Grey Fullback Vest | NF8S

4-button; adjustable back; darted pockets

\$59.99

Fullback Vest Purchase Price

Fabric Content: Premium Wool Blend

Coat Sizing: Regular: 34-66
Short: 34-56
Long: 34-66
X-Long: 38-56
(even sizes only)

Pant Sizing: Regular: 28-66
Short: 28-66
Long: 28-66
(even sizes only)

Vest Sizing:
RXS - 5XA

Also Shown:
Floral Windsor Tie | NWFNA
see page 31

**SEPARATES
COLLECTION**

Mix and match your coat and pant
sizes for the perfect fit.

**TAN
SLIM FIT SUIT**

Tan Suit Coat | N8TC
Slim fit; 2-button notch; flap pockets; side-vented

\$169.99

Coat Purchase Price

Tan Suit Pants | N8TP
Slim fit; flat front; exact waist; belt loops; buttons to accommodate suspenders

\$70.00

Pant Purchase Price

Tan Fullback Vest | NF8T
4-button; adjustable back; darted pockets

\$59.99

Fullback Vest Purchase Price

Fabric Content: Premium Wool Blend

Coat Sizing:	Pant Sizing:
Regular: 34-66	Regular: 28-66
Short: 34-56	Short: 28-66
Long: 34-66	Long: 28-66
X-Long: 38-56	Long: 28-66
(even sizes only)	(even sizes only)

Vest Sizing:
RXS - 5XA

Also Shown:
Floral Windsor Tie | NWFCP
see page 31

**SEPARATES
COLLECTION**

Mix and match your coat and pant sizes for the perfect fit.



**BLACK
SLIM FIT SUIT**

Black Suit Coat | N8BC
Slim fit; 2-button notch; flap pockets; side-vented

\$169.99

Coat Purchase Price

Black Suit Pants | N8BP
Slim fit; flat front; exact waist; belt loops; buttons to accommodate suspenders

\$70.00

Pant Purchase Price

Black Fullback Vest | NF8B
4-button; adjustable back; darted pockets

\$59.99

Fullback Vest Purchase Price

Fabric Content: Premium Wool Blend

Coat Sizing:	Pant Sizing:
Regular: 34-66	Regular: 28-66
Short: 34-56	Short: 28-66
Long: 34-66	Long: 28-66
X-Long: 38-56	Long: 28-66
(even sizes only)	(even sizes only)

Vest Sizing:
RXS - 5XA

Also Shown:
Floral Bow Tie | NBFWI
see page 30

**SEPARATES
COLLECTION**

Mix and match your coat and pant sizes for the perfect fit.



**SUPER 120'S
BLACK 2-BUTTON
SLIM FIT TUXEDO**

Super 120's Tuxedo Coat | N19C
Slim fit; 2-button; notch lapel; side-vented

\$259.99

Coat Purchase Price

Super 120's Tuxedo Pants | N19P
Slim fit; flat front; exact waist; buttons to accommodate suspenders; satin leg piping

\$90.00

Pant Purchase Price

Fabric Content: Super 120's Wool

Coat Sizing: Regular: 34-66
Short: 34-56
Long: 34-66
X-Long: 38-56
(even sizes only)

Pant Sizing: Regular: 28-66
Short: 28-66
Long: 28-66
(even sizes only)

Also Shown:
Black Satin Bow Tie | RBBT
see page 44
Black Fullback Vest | NFBS
see page 35
Black Allegro Shoes | NBAS
see page 43

**SEPARATES
COLLECTION**

Mix and match your coat and pant sizes for the perfect fit.



BLACK 1-BUTTON SLIM FIT TUXEDO



**SEPARATES
COLLECTION**

Mix and match your coat and pant sizes for the perfect fit.

Slim Fit Tuxedo Coat | N18C
Slim fit; 1-button; peak lapel; side-vented

\$219.99

Coat Purchase Price

Wool Blend Tuxedo Pants | N18P
Slim fit; flat front; exact waist; buttons to accommodate suspenders; satin leg piping

\$80.00

Pant Purchase Price

Fabric Content: Premium Wool Blend

Coat Sizing: Regular: 34-66
Short: 34-56
Long: 34-66
X-Long: 38-56
(even sizes only)

Pant Sizing: Regular: 28-66
Short: 28-66
Long: 28-66
(even sizes only)

Also Shown:
Black Satin Bow Tie | RBBT
see page 44

BLACK 2-BUTTON SLIM FIT NESTED TUXEDO



Slim Fit 2-Button Nested Tuxedo | N89
Coat: Slim fit; 2-button; satin notch lapel; double-besom pockets; side-vented
Pants: flat front; exact waist; traditional satin leg stripe

\$199.99

Coat & Pant Purchase Price

Fabric Content: Poly/Viscose Blend

Coat Sizing: Regular: 36-54
Short: 34-50
Long: 38-54

Nested Waist Sizing:
Coat Sizes 34-54 have a 6" drop

Pant Sizing Example:
36 coat minus 6" = 30" waist

Also Shown:
Black Skinny Satin Windsor Tie | NFSBL
see page 44
Black Fullback Vest | NFBS
see page 35

WHITE CLASSIC DINNER JACKET



RENT
OR
BUY
THIS STYLE

To RENT see page 59 in the JFW Rental Catalog

IVORY CLASSIC DINNER JACKET



RENT
OR
BUY
THIS STYLE

To RENT see page 57 in the JFW Rental Catalog

BURGUNDY ULTRA SLIM FIT NESTED TUXEDO



RED ULTRA SLIM FIT NESTED TUXEDO



White Classic Dinner Jacket | N70
Slim fit; 1-button; shawl lapel; center-vented; flap pockets

\$199.99
Coat Purchase Price

Super 120's Tuxedo Pants | N19P
Slim fit; flat front; exact waist; buttons to accommodate suspenders; satin leg piping

\$90.00
Pant Purchase Price

Wool Blend Tuxedo Pants | N18P
Slim fit; flat front; exact waist; buttons to accommodate suspenders; satin leg piping

\$80.00
Pant Purchase Price

Fabric Content: Polyester
Coat Sizing: Regular: 34-60
Short: 34-52
Long: 36-60 (even sizes only)
Pant Sizing: Regular: 28-66
Short: 28-66
Long: 28-66 (even sizes only)

Ivory Classic Dinner Jacket | N601C
Slim fit; 1-button; shawl lapel; side-vented; double besom pockets

\$199.99
Coat Purchase Price

Super 120's Tuxedo Pants | N19P
Slim fit; flat front; exact waist; buttons to accommodate suspenders; satin leg piping

\$90.00
Pant Purchase Price

Wool Blend Tuxedo Pants | N18P
Slim fit; flat front; exact waist; buttons to accommodate suspenders; satin leg piping

\$80.00
Pant Purchase Price

Fabric Content: Polyester
Coat Sizing: Regular: 34-60
Short: 34-60
Long: 34-60
X-Long: 38-50 (even sizes only)
Pant Sizing: Regular: 28-66
Short: 28-66
Long: 28-66 (even sizes only)

Burgundy Ultra Slim Fit Nested Tuxedo | N30
Coat: Ultra slim fit; 1-button w/black satin shawl lapel; flap pockets; besom ticket pocket; side-vented
Pants: matching; flat front; exact waist; with belt loops; no leg stripe

\$199.99
Coat Purchase Price

Fabric Content: Poly/Viscose Blend

Coat Sizing:
Regular: 36-54
Short: 34-48
Long: 38-54

Nested Waist Sizing:
Coat Sizes 34-54 have a 6" drop

Pant Sizing Example:
36 coat minus 6" = 30" waist

Also Shown:
Black Skinny Satin Windsor Tie | NFSBL see page 44
Black Fullback Vest | NFBS see page 35

Red Ultra Slim Fit Nested Tuxedo | N31
Coat: Ultra slim fit; 1-button w/black satin shawl lapel; flap pockets; besom ticket pocket; side-vented
Pants: matching; flat front; exact waist; with belt loops; no leg stripe

\$199.99
Coat Purchase Price

Fabric Content: Poly/Viscose Blend

Coat Sizing:
Regular: 36-54
Short: 34-48
Long: 38-54

Nested Waist Sizing:
Coat Sizes 34-54 have a 6" drop

Pant Sizing Example:
36 coat minus 6" = 30" waist

Also Shown:
Black Satin Bow Tie | RBBT see page 44

**BLACK VELVET
ULTRA SLIM FIT
TUXEDO**

**Black Velvet Ultra Slim Fit
Tuxedo Coat | N8VC**

Ultra slim fit; 1-button; satin peak lapel;
satin double-besom pockets; side-vented

\$179.99

Coat Purchase Price

Super 120's Tuxedo Pants | N19P

Slim fit; flat front; exact waist; buttons to
accommodate suspenders; satin leg piping

\$90.00

Pant Purchase Price

Wool Blend Tuxedo Pants | N18P

Slim fit; flat front; exact waist; buttons to
accommodate suspenders; satin leg piping

\$80.00

Pant Purchase Price

Fabric Content: 100% Polyester

Coat Sizing:	Pant Sizing:
Regular: 36-50	Regular: 28-66
Short: 36-46	Short: 28-66
Long: 38-50 (even sizes only)	Long: 28-66 (even sizes only)

Also Shown:
Floral Bow Tie | NBFDG
see page 30



**NAVY VELVET
ULTRA SLIM FIT
TUXEDO**

**Navy Velvet Ultra Slim Fit
Tuxedo Coat | N3VC**

Ultra slim fit; 1-button; satin peak lapel;
satin double-besom pockets; side-vented

\$179.99

Coat Purchase Price

Super 120's Tuxedo Pants | N19P

Slim fit; flat front; exact waist; buttons to
accommodate suspenders; satin leg piping

\$90.00

Pant Purchase Price

Wool Blend Tuxedo Pants | N18P

Slim fit; flat front; exact waist; buttons to
accommodate suspenders; satin leg piping

\$80.00

Pant Purchase Price

Fabric Content: 100% Polyester

Coat Sizing:	Pant Sizing:
Regular: 36-50	Regular: 28-66
Short: 36-46	Short: 28-66
Long: 38-50 (even sizes only)	Long: 28-66 (even sizes only)

Also Shown:
Floral Windsor Tie | NWFSL
see page 31



**HUNTER GREEN
SLIM FIT SUIT**



**SEPARATES
COLLECTION**
Mix and match your coat and pant
sizes for the perfect fit.

Hunter Green Suit Coat | NHGC

Slim fit; 2-button notch; flap pockets; side-vented; telescopic sleeves

\$169.99

Coat Purchase Price

Hunter Green Fullback Vest | NFHG

4-button; adjustable back; darted pockets

\$59.99

Fullback Vest Purchase Price

Hunter Green Suit Pants | NHGP

Slim fit; flat front; exact elastic waist; belt loops

\$70.00

Pant Purchase Price

Fabric Content: Poly/Viscose Blend

Coat Sizing

Regular: 34-60
Short: 34-50
Long: 36-60
(even sizes only)

Pant Sizing

Regular: 28-60
Long: 28-60
(even sizes only)

Vest Sizing:

RXS-R5; LM-L2

Also Shown:

Floral Windsor Tie | NWFRS - see page 31

Black Oxford Shoe | NBXS - see page 43

**ANACONDA SNAKESKIN
SLIM FIT TUXEDO**



**Anaconda Snakeskin
Tuxedo Coat | N8AC**

Slim fit; 2-button w/black satin notch lapel; flap pockets; side-vented

\$179.99

Coat Purchase Price

**Euro Slim
Stretch Suit Pants | N11P**

Euro Slim Fit; flat front; exact waist; belt loops

\$90.00

Pant Purchase Price

Also Shown:

Solid Windsor Tie | NWWBL

see page 33

Black Velvet Loafers | NBLVS

see page 42

Coat Fabric Content: Poly/Elastine Blend

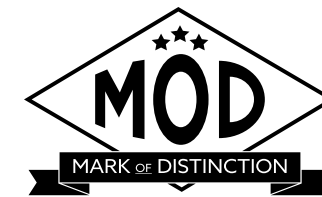
Pant Fabric Content: Poly/Knit Blend

Coat Sizing

Regular: 34-50
Short: 34-50
Long: 36-50
Boys': 14-18
(even sizes only)

Pant Sizing

Men's: 28-44
Boys': 26-28
(even sizes only)



**BLACK
ARIES PAISLEY
SLIM FIT TUXEDO**

Black Aries Paisley Tuxedo Coat | N182

Slim fit; 1-button w/black shawl lapel; double-besom pockets; side-vented

\$179.99

Coat Purchase Price

Euro Slim Stretch Suit Pants | N11P

Euro Slim Fit; flat front; exact waist; belt loops

\$80.00

Pant Purchase Price

Coat Fabric Content: Poly/Elastine Blend

Pant Fabric Content: Poly/Knit Blend

Coat Sizing:

Regular: 34-50;
Short: 34-50;
Long: 36-50;
Boys': 14-18
(even sizes only)

Pant Sizing:

Men's: 28-44;
Boys': 26-28
(even sizes only)

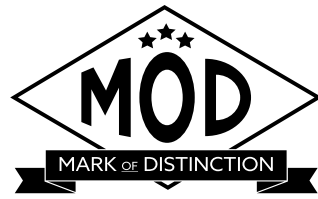
Also Shown:

Solid Bow Tie | NBXBL

see page 32

Black Velvet Loafers | NBLVS

see page 42



**GRANITE
ARIES PAISLEY
SLIM FIT TUXEDO**

Granite Aries Paisley Tuxedo Coat | N192
Slim fit; 1-button w/black shawl lapel;
double-besom pockets; side-vented

\$179.99

Coat Purchase Price

Super 120's Tuxedo Pants | N19P

Slim fit; flat front; exact waist; buttons to
accommodate suspenders; satin leg piping

\$90.00

Pant Purchase Price

Fabric Content: 100% Polyester

Coat Sizing:	Pant Sizing:
Regular: 34-50	Regular: 28-66
Short: 34-50	Short: 28-66
Long: 34-50	Long: 28-66
X-Long: 38-50	(even sizes only)
Boys': 14-18	
(even sizes only)	

Also Shown:
Solid Bow Tie | NBXBL
see page 32
Black Velvet Loafers | NBLVS
see page 42

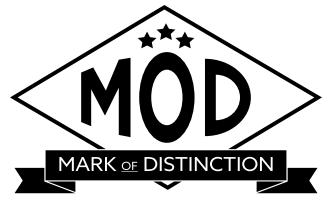


**RENT
OR
BUY**
THIS STYLE

To RENT see page 43 in
the JFW Rental Catalog

**RENT
OR
BUY**
THIS STYLE

To RENT see page 44 in
the JFW Rental Catalog



**COBALT
ARIES PAISLEY
SLIM FIT TUXEDO**

Cobalt Aries Paisley Tuxedo Coat | N132
Slim fit; 1-button w/black shawl lapel;
double-besom pockets; side-vented

\$179.99

Coat Purchase Price

Super 120's Tuxedo Pants | N19P

Slim fit; flat front; exact waist; buttons to
accommodate suspenders; satin leg piping

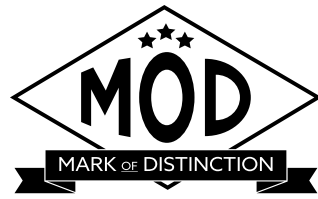
\$90.00

Pant Purchase Price

Fabric Content: 100% Polyester

Coat Sizing:	Pant Sizing:
Regular: 34-50	Regular: 28-66
Short: 34-50	Short: 28-66
Long: 34-50	Long: 28-66
X-Long: 38-50	(even sizes only)
Boys': 14-18	
(even sizes only)	

Also Shown:
Solid Bow Tie | NBXBL
see page 32
Blue Subtle Sparkle Shoes | N3SSS
see page 42



**APPLE RED
ARIES PAISLEY
SLIM FIT TUXEDO**

Apple Red Aries Paisley Tuxedo Coat | N122
Slim fit; 1-button w/black shawl lapel;
double-besom pockets; side-vented

\$179.99

Coat Purchase Price

Super 120's Tuxedo Pants | N19P

Slim fit; flat front; exact waist; buttons to
accommodate suspenders; satin leg piping

\$90.00

Pant Purchase Price

Fabric Content: 100% Polyester

Coat Sizing: Regular: 34-50
Short: 34-50
Long: 34-50
X-Long: 38-50
Boys: 14-18
(even sizes only)

Pant Sizing: Regular: 28-66
Short: 28-66
Long: 28-66
(even sizes only)

Also Shown:
Solid Bow Tie | NBXBL
see page 32
Black Subtle Sparkle Shoes | NBSSS
see page 42



**RENT
OR
BUY**
THIS STYLE

To RENT see page 42 in
the JFW Rental Catalog

**RENT
OR
BUY**
THESE STYLES

**MICHAEL KORS
STRIPED WINDSOR TIES**
Striped Self-Tie Windsor Ties

\$39.99
Pricing for Striped Windsor Ties
Available in men's regular and long
sizes only. Boys' sizes not available.
Rental styles are pre-tied.





MICHAEL KORS FLORAL BOW TIES

Pre-Tied Bow Ties

\$34.99
Pricing for Floral Bow Ties

Available in men's sizes only. Boys' sizes not available for purchase.



Black | NBFBL



Ivory | NBFIV



Champagne | NBFCP



Rose Gold | NBFRS



Blush | NBFBH



Dusty Coral | NBFCO



Mauve | NBFMV



Apple Red | NBFAR



Wine | NBFWI



Sky Blue | NBFSK



Lite Blue | NBFBL



Dusty Blue | NBFDB



Royal Blue | NBFRO



Slate Blue | NBFSL



Navy | NBFNA



Dark Green | NBFDG



Emerald | NBFEM



Sage | NBFSE



MICHAEL KORS FLORAL WINDSOR TIES

Floral Patterned Self-Tie Windsor Ties

\$39.99
Pricing for Floral Windsor Ties

Available in men's regular and long sizes only. Boys' sizes not available. Rental styles are pre-tied.



Black | NWFBL



Platinum | NWFPT



White | NWFWH



Ivory | NWFIV



Champagne | NWFPC



Biscotti | NWFBT



Rose Gold | NWFRS



Bellini | NWFBE



Dark Coral | NWFDC



Blush | NWFBH



Mauve | NWFMV



Apple Red | NWFAR



Wine | NFWWI



Cranberry | NWFCE



Plum | NWFPL



Dusty Lavender | NWFDL



Lavender | NWFLLA



Lite Blue | NWFLLB



Dusty Blue | NWFDB



Slate Blue | NWFSL



Navy | NWFNA



Dark Green | NWFDCG



Emerald | NWFEM



Sage | NWFSE



MICHAEL KORS

SOLID BOW TIES

Pre-Tied Bow Ties

\$34.99

Pricing for Solid Bow Ties

Available in men's sizes only. Boys' sizes not available for purchase.



Black | NBXBL



White | NBXWH



Ivory | NBXIV



Champagne | NBXCP



Blush | NBXBH



First Blush | NBXFB



Ballet | NBXBA



Rose Petal | NBXRP



Ferrari Red | NBXFR



Apple Red | NBXAR



Wine | NBXWI



Plum | NBXPL



Navy | NBXNA



Royal Blue | NBXRO



Slate Blue | NBXSL



MICHAEL KORS

SOLID WINDSOR TIES

Solid Self-Tie Windsor Ties

\$39.99

Pricing for Solid Windsor Ties

Available in men's regular and long sizes only. Boys' sizes not available. Rental styles are pre-tied.



Black | NWWBL



Charcoal | NWWCA



Silver | NWWSI



Platinum | NWWPT



Ivory | NWWIV



Champagne | NWWCP



Nude | NWWNU



Blush | NWWBH



First Blush | NWWFB



Ballet | NWWBA



Rose Petal | NWWRP



Coral | NWWCO



Ferrari Red | NWWFR



Apple Red | NWWAR



Wine | NWWWI



Plum | NWWPL



Navy | NWWNA



Royal | NWWRO



Slate Blue | NWWSL



Teal | NWWTE

MICROFIBER SHIRTS



Microfiber Shirts
white-N76W; black-N76B; ivory-N76I
plain front; laydown collar

\$49.99
Pricing for Microfiber Shirts

MICROFIBER FITTED SHIRTS



Microfiber Fitted Shirts
white-N96W; black-N96B; ivory-N96I
tapered fit; plain front; laydown collar

\$49.99
Pricing for Microfiber Fitted Shirts

MICROFIBER SUPERFIT SHIRT



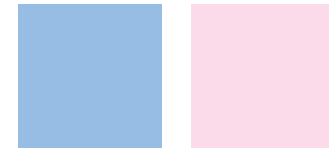
Microfiber Superfit Shirt
white-N21W
super tapered fit; plain front; laydown collar

\$49.99
Pricing for Microfiber Superfit Shirt

COLORED MICROFIBER SHIRTS



Colored Microfiber Shirts
plain front; laydown spread collar;
standard and fitted sizes, see sizing below



Light Blue | N56S Light Pink | N56P

\$49.99
Pricing for Colored Microfiber Shirts

Size:	Fit:
BXS	Regular
BS	Regular
BM	Regular
BL	Fitted
S	Fitted
M	Fitted
L	Fitted
XL	Fitted
2XL	Fitted
3XL	Regular
4XL	Regular
5XL	Regular
6XL	Regular

Fitted = Slim

BLACK FULLBACK VEST



Black Fullback Vest | NFBS
satin; four button front; adjustable back

\$79.99
Pricing for Black Fullback Vest

BLACK DOUBLE-BREASTED FULLBACK VEST



Black Double-Breasted Fullback Vest | NDB90
faille with satin frame; six button front; adjustable back

\$99.99
Pricing for Black Double-Breasted Fullback Vest

Black Faille Framed Pre-Tied Bow Tie | NB990
available in men's sizes only

\$24.99
Pricing for Black Faille Framed Pre-Tied Bow Tie

EURO SLIM STRETCH PANTS



Euro Slim Stretch Suit Pants | N11P
Euro Slim Fit; flat front; exact waist; belt loops

\$80.00
Pricing for Euro Style Suit Pants

Pant Sizing:
Men's: 28-44;
Boys': 26-28
(even sizes only)

CLASSIC SHIRTS



1/4" Pleated Shirt | N85W
white; 65/35 blend; wing collar



1/4" Pleated Shirt | N86W
white; 65/35 blend; laydown collar

\$29.99
Pricing for Classic Shirts

SIZING FOR MEN'S FULLBACK VEST										
Coat Size Range	Regular Sizes							Long Sizes - 6' 2" and over		
	Small	Medium	Large	X-Large	2X-Large	3X-Large	4X-Large	Medium	Large	X-Large
Vest Size Code	RS	RM	RL	RX	R2	R3	R4	LM	LL	LX

BROWN TWEED FULLBACK VEST

Brown Tweed Fullback Vest | NFTW

Wool; four button front; adjustable back; men's sizes available; boys' sizes available in backless styling

\$79.99

Tweed Vest Purchase Price

Fabric Content: 100% Wool

Vest Sizing:

see page 37

Also Shown:

Solid Windsor Tie | NWWIV

see page 33

Tan Suit Pants | N8TP

see page 16



BLUE TWEED FULLBACK VEST



Blue Tweed Fullback Vest | NFTWB

Wool; four button front; adjustable back; men's sizes available; boys' sizes available in backless styling

\$79.99

Tweed Vest Purchase Price

Fabric Content: 100% Wool

Also Shown:

Solid Windsor Tie | NWWSL - see page 36

Light Grey Suit Pants | N8GP - see page 14

GREY TWEED FULLBACK VEST



Grey Tweed Fullback Vest | NFTWG

Wool; four button front; adjustable back; men's sizes available; boys' sizes available in backless styling

\$79.99

Tweed Vest Purchase Price

Fabric Content: 100% Wool

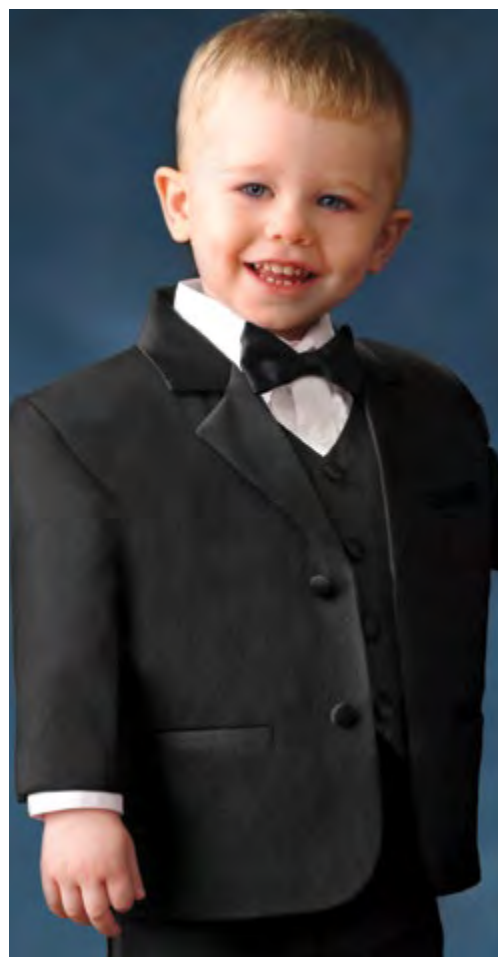
Also Shown:

Solid Windsor Tie | NWWWI - see page 36

Black Suit Pants | N8BP - see page 17

	BOYS' BACKLESS VEST			MEN'S FULLBACK VEST												MEN'S BACKLESS VEST	
				Regular Sizes						Long Sizes - 6' 2" and over							
	Small	Medium	Large	X-Small	Small	Medium	Large	X-Large	2X-Large	3X-Large	Small	Medium	Large	X-Large	2X-Large		3X-Large
Coat Size Range	3 - 6	7 - 12	14 - 16	18B - 35	36 - 38	39 - 42	43 - 45	46 - 48	50 - 54	56 - 58	36-38	39 - 42	43 - 45	46 - 48	50 - 54	56 - 58	60 - 70
Vest Size Code	BS	BM	BL	RXS	RS	RM	RL	RX	R2	R3	LS	LM	LL	LX	L2	L3	5XA

TODDLER TUX



Toddler Tux | TXB

includes coat, pant, shirt, fullback vest and tie

Fabric Content: Polyester

Toddler Tux Sizing:

Size:	Fits:	Chest:	Waist:	Outseam:
01	12-18 mos.	19"	18-21"	18"
02	2T	21"	19-22"	19.5"
03	3T	23"	20-23"	21.5"

\$89.99

Pricing for Toddler Tux

TODDLER SUITS



Navy Toddler Nested Suit | NSTN

2-button notch, elastic back pants, adjustable vest; white plain front shirt; windsor tie; 100% polyester



Black Toddler Nested Suit | NSTB

2-button notch, elastic back pants, adjustable vest; white plain front shirt; windsor tie; 100% polyester

Grey Toddler Nested Suit | NSTG

2-button notch, elastic back pants, adjustable vest; white plain front shirt; windsor tie; 100% polyester

Tan Toddler Nested Suit | NSTT

2-button notch, elastic back pants, adjustable vest; white plain front shirt; windsor tie; 100% polyester

Burgundy Toddler Nested Suit | NSTW

2-button notch, elastic back pants, adjustable vest; white plain front shirt; windsor tie; 100% polyester

Sizing for all Toddler Nested Suits:

Size:	Fits:	Chest:	Waist:	Outseam:
01	12-18 mos.	19"	18-21"	18"
02	2T	21"	19-22"	19.5"
03	3T	23"	20-23"	21.5"

\$99.99

Pricing for All Toddler Nested Suits

TODDLER PANT SETS



Tan Toddler Pant Set | NPTT

includes elastic back pants, ivory shirt; solid bow tie; suspenders; 100% polyester



Black Toddler Pant Set | NPTB

includes elastic back pants, plain front white shirt; solid bow tie; suspenders; 100% polyester

Grey Toddler Pant Set | NPTG

includes elastic back pants, plain front white shirt; solid bow tie; suspenders; 100% polyester

Navy Toddler Pant Set | NPTN

includes elastic back pants, plain front white shirt; solid bow tie; suspenders; 100% polyester

Burgundy Toddler Pant Set | NPTW

includes elastic back pants, plain front white shirt; solid bow tie; suspenders; 100% polyester

Sizing for all Toddler Pant Sets:

Size:	Fits:	Chest:	Waist:	Outseam:
01	12-18 mos.	19"	18-21"	18"
02	2T	21"	19-22"	19.5"
03	3T	23"	20-23"	21.5"

\$89.99

Pricing for All Toddler Pant Sets

PATTERNED FORMAL SOCKS



Dark Grey Argyle XPDG **Light Pink Argyle XPPK** **Wine Grey Argyle XPWG** **Regency Argyle XPRG** **Navy Grey Argyle XPNG**



Heather Navy Argyle XPHN **Navy Argyle XPNA** **Teal Argyle XPTE** **Mint Argyle XPMN**



Grey Mustache XPMGY **Royal Mustache XPMRO** **Wine Beeline Optical XPBWI** **Blue Beeline Optical XPBNA**



Blue Line Dot XPLNA **Purple Line Dot XPLPU** **Coral Line Dot XPLCO**

\$14.99
Pricing for Patterned Formal Socks



Statement Sockwear makes a statement in quality, colors, patterns and, most importantly, makes a difference in this world with every single purchase. Through our partnership with 20 Liters, each pair of Statement Sockwear provides 100 days of clean drinking water for 1 person in Africa.

COLORFUL FORMAL SOCKS



Royal XSRO **Purple XSVA**



Wine XSWI **Apple Red XSAR**



Ferrari Red XSFR **Coral XSCO**



Petal Pink XSPK

\$14.99
Pricing for Colorful Formal Socks



BASIC FORMAL SOCKS



Black XBLK **White XWHT**



Ivory XIVY **Brown XBRN**

\$4.99
Pricing for Basic Formal Socks

PREMIUM SUIT SHOES



Brown Burnished
Toe Suit Shoe | NBPT



Brown Monk Strap, Burnished
Toe Suit Shoe | NMSB

\$84.99

Pricing for Premium Suit Shoes

MEN'S SHOE SIZING		
Styles	Medium Sizes	Wide Sizes
NBPT+	7-16	N/A
NMSB+	7-16	N/A
NBSKS+	7 - 14	N/A
NSSKS+	7 - 14	N/A
NGSKS+	7 - 14	N/A
NBSSS+	7, 8-14	N/A
NCSSS+	7, 8-14	N/A
N3SSS+	7, 8-14	N/A
NBLVS+	7, 8-14	N/A
N3SL+	7-14	N/A
NRSL+	7-14	N/A

* Half sizes stop at 11.5 + Half sizes stop at 10.5

FASHION SHOES



Black Sparkle
Shoe | NBSKS



Silver Sparkle
Shoe | NSSKS



Gold Sparkle
Shoe | NGSKS



Black Subtle Sparkle
Shoe | NBSSS



Charcoal Subtle Sparkle
Shoe | NCSST



Blue Subtle Sparkle
Shoe | N3SSS



Black Velvet
Loafer | NBLVS



Blue Suede
Loafer | N3SL



Red Suede Loafer
NRSL

\$74.99

Pricing for Fashion Shoes

RENT OR BUY FORMAL SHOES

To RENT see the JFW Accessory Catalog



Black Allegro
Shoe | NBAS



Black Oxford
Shoe | NBXS



Cognac Brown Oxford
Shoe | NCXS



Chestnut Plain Toe
Oxford Shoe | NCOP

\$74.99

Pricing for Formal Shoes

BASIC SUIT SHOES



Black Suit
Shoe | NBLS



Brown Suit
Shoe | NBRB

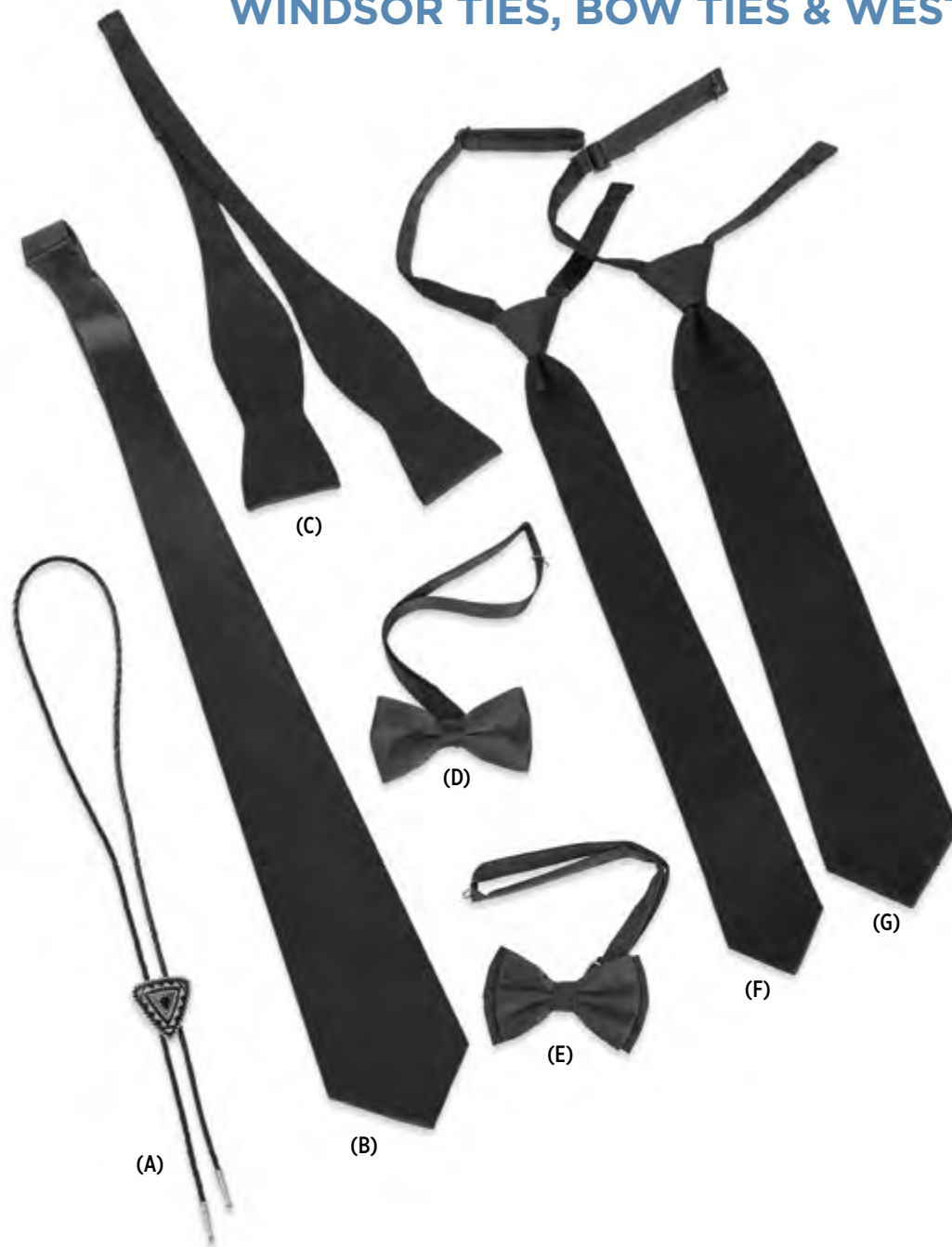
\$64.99

Pricing for Basic Suit Shoes

MEN'S SHOE SIZING		
Styles	Medium Sizes	Wide Sizes
NBAS+	6 - 18	7 - 18
NBXS+	6 - 18	7 - 18
NCXS+	6 - 18	7 - 18
NCOP+	6 - 18	7 - 18
NBLB+	6.5-16	7 - 16
NBRB+	6.5-16	7 - 16

* Half sizes stop at 11.5 + Half sizes stop at 10.5

WINDSOR TIES, BOW TIES & WESTERN BOLO TIE



(A)
Men's Western Bolo Tie
Black & Silver | NBOLA

\$27.99
Pricing for NBOLA

(B)
Michael Kors
Self-Tie Windsor Tie
Black | NWWBL

\$39.99
Pricing for NWWBL

(C)
Satin Self-Tie Bow Tie
Black | RBST

\$24.99
Pricing for RBST

(D)
Satin Pre-Tied Bow Tie
Black | RBBT
boxed

\$15.99
Pricing for RBBT

(E)
Failla Pre-Tied Bow Tie
Black | NB990
available in men's sizes only

\$24.99
Pricing for NB990

(F)
Satin Pre-Tied
Skinny Windsor Tie
Black | NFSBL

\$21.99
Pricing for NFSBL

(G)
Satin Pre-Tied
Windsor Tie
Black | NFBLK

\$21.99
Pricing for NFBLK

CUMMERBUND & TIE SETS



(H)
Satin Tie and
Cummerbund Boxed Sets
Black | BPPP
White | WPPP
Red | RPPP

\$25.99
Pricing for Satin Tie and
Cummerbund Boxed Sets

REVERSIBLE BELTS



(I)
Black/Brown
Reversible Belt | NBLT

\$19.99
Pricing for Black/Brown
Reversible Belt

Sizing for
Reversible Belts:

Waist:	Size:
21-24	XS
25-28	S
29-32	M
33-36	L
37-40	XL
41-44	2X
45-48	3X



(J)

(K)

SUSPENDERS

Button-On Suspenders
(J) Black | BOSB
(K) White | BOSW

\$19.99
Pricing for Button-On Suspenders

FORMAL JEWELRY



(L)

(M)

Knot Cufflink & Stud Set
(L) Gold | JBGB
(M) Silver | JBSB

\$37.99
Pricing for Knot Cufflink & Stud Sets

TOP HAT, CANE, GLOVES & FEDORA HAT



(N)
Black Felt Top Hat | HTB-
men's only
Sizing: S, M, L, XL

\$64.99
Pricing for Black Felt Top Hat

(O)
Formal Cane
Black | CANB
with white tips

\$13.99
Pricing for Black Formal Cane

(P)
Formal Gloves | GLOW
white

\$9.99
Pricing for White Formal Gloves

(Q)
Black Fedora Hat
Men's | HTF-
Boys' | HFB-
Men's Sizing: S, M, L, XL
Boys' Sizing: S, M, L

\$83.99
Pricing for Black Fedora Hat

NOVELTY SUSPENDERS



MATCHES COAT STYLES



Color **Steel Grey** Suspenders **SS392**
(Matches styles 392 & 391)



Color **Medium Grey** Suspenders **SS322**
(Matches styles 322 & 350)



Color **Heather Grey** Suspenders **SS262**
(Matches styles 262 & 362)

\$14.99
Pricing for Novelty Suspenders



Color **Tan** Suspenders **SS252**
(Matches style 252)



Color **Sand** Suspenders **SS202**
(Matches style 202)



Color **Indigo** Suspenders **SS221**
(Matches style 221)



Color **Blue** Suspenders **SS302**
(Matches style 302)

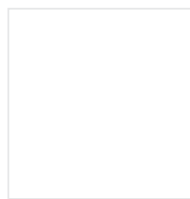


Color **Navy** Suspenders **SS372**
(Matches styles 372 & 371)

MATCHES ACCESSORY COLORS



Color **Black** Suspenders **SSBL**



Color **White** Suspenders **SSWH**



Color **Coral** Suspenders **SSCO**



Color **Blush** Suspenders **SSBH**
(Bellini)



Color **Petal Pink** Suspenders **SSPK**



Color **Ferrari Red** Suspenders **SSFR**



Color **Apple Red** Suspenders **SSAR**



Color **Wine** Suspenders **SSWI**



Color **Plum** Suspenders **SSPL**



Color **Purple** Suspenders **SSPU**



Color **Lavender** Suspenders **SSLA**



Color **Lite Blue** Suspenders **SSLB**



Color **Royal Blue** Suspenders **SSRO**



Color **Teal** Suspenders **SSTE**



Color **Mint** Suspenders **SSMN**



FOR PURCHASE