



The Suit & Tuxedo

RENTAL COLLECTION

JFW

JIM'S FORMAL WEAR

STORE COPY

We Fit Everyone!



**Ultra Slim and Slim Fit Styles
to fit all shapes and sizes.**

COAT FABRIC SWATCHES FOR RENTAL

Choose your look from our collection of colored tuxedos & suits

Reference page number for tuxedo & suit details



Color: Granite Paisley
Style: 192
Page: 43



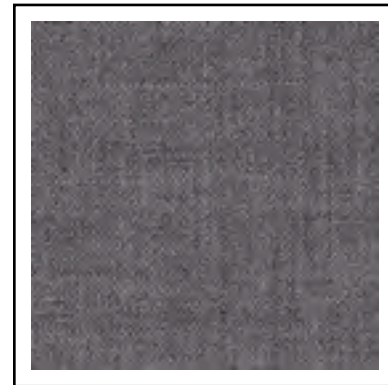
Color: Grey Portofino
Style: 301
Page: 48



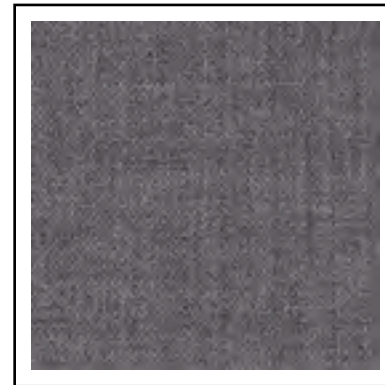
Color: Steel Grey
Styles: 391, 392
Pages: 21, 30, 31, 68



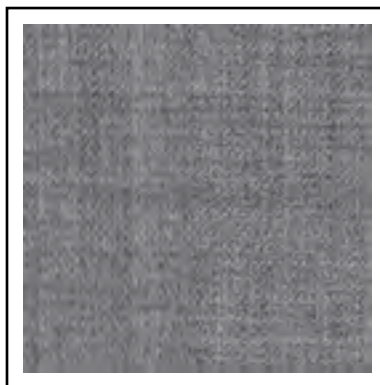
Color: Grey Plaid
Style: 231
Page: 38



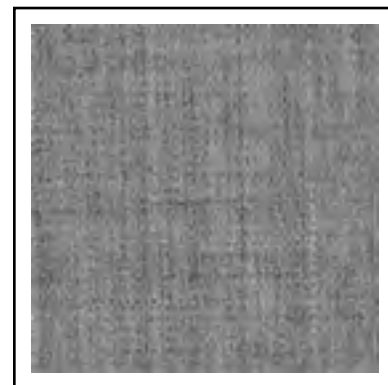
Color: Medium Grey
Style: 350
Pages: 19, 22, 23, 66



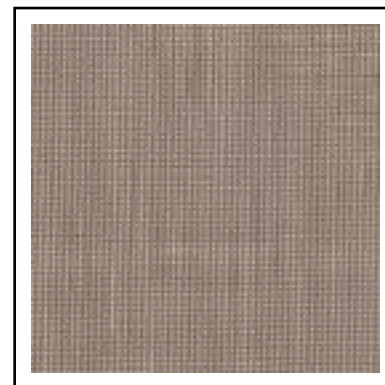
Color: Medium Grey
Style: 322
Page: 47



Color: Heather Grey
Style: 262
Pages: 20, 37, 67



Color: Heather Grey
Style: 362
Page: 46



Color: Sand
Style: 202
Page: 36

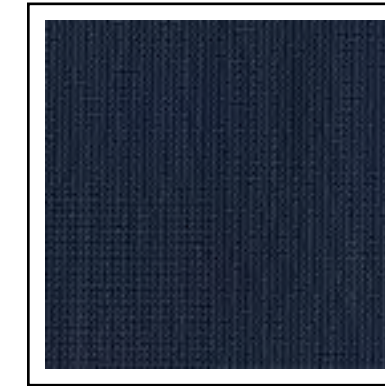
COAT FABRIC SWATCHES FOR RENTAL

Choose your look from our collection of colored tuxedos & suits

Reference page number for tuxedo & suit details



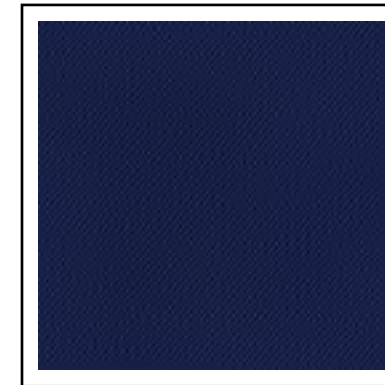
Color: Navy
Styles: 371, 372
Pages: 17, 28, 29, 65



Color: Slate Blue
Style: 382
Page: 45



Color: Blue
Style: 302
Pages: 18, 24, 25, 64



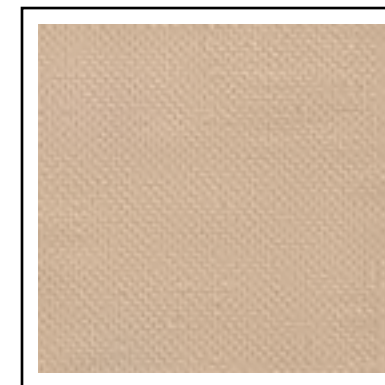
Color: Cobalt Blue
Style: 211
Page: 40



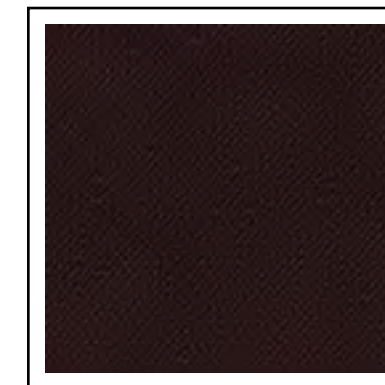
Color: Cobalt Paisley
Style: 132
Page: 44



Color: Indigo Blue
Style: 221
Page: 39



Color: Tan
Style: 252
Page: 53



Color: Burgundy
Style: 201
Page: 41



Color: Apple Red Paisley
Style: 122
Page: 42



ALLURE MEN®

Sand Brunswick
Ultra Slim Fit Suit

Style 202

for details, see page 36



OUR ADVANTAGES

OVER THE 'BIG BOX' STORES

- Direct Delivery Convenience
- Larger Selection of Styles and Colors
- More Fit Options: Ultra Slim, Slim and Modern
- Personalized Customer Service
- Experience and Expertise
- Better Value and Lower Prices

DIRECT DELIVERY

HOME • OFFICE • DESTINATION

Convenient delivery options for your wedding party!



Ring Bearer Savings!

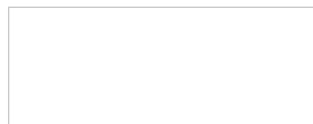
ALL STYLES are specially priced for your little guy.

To qualify for the Ring Bearer Special Price:

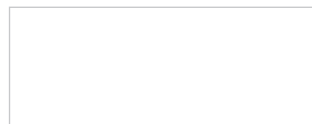
- ▶ The Ring Bearer must be accompanied by the groom's tuxedo or suit rental and five fully paid rentals in the wedding party.
- ▶ Ring Bearer's tuxedo or suit may not exceed size 16.



All Tuxedos and Suits are specially priced for the Ring Bearer at:



Ringbearer Ensemble with Microfiber Shirt:



Any pant, basic shirt, tie and premium vest included; shoes and pocket squares are additional.

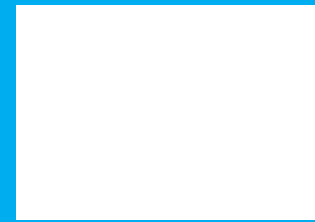
PRICING INFORMATION

Find Tuxedos, Suits and Formal Accessories to match any budget



DIAMOND COLLECTION | Pages 22-44

Diamond Collection ensembles include:
Any pant, any basic shirt with nickel-plated jewelry, any tie and any vest or cummerbund.



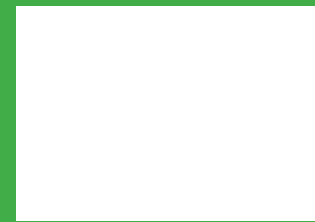
PLATINUM COLLECTION | Pages 45-57

Platinum Collection ensembles include:
Any pant, any basic shirt with nickel-plated jewelry, any tie and any vest or cummerbund.



GOLD COLLECTION | Pages 58-60

Gold Collection ensembles include:
Any pant, any basic shirt with nickel-plated jewelry, any tie and any vest or cummerbund.



BUDGET COLLECTION | Pages 61-62

Budget Collection ensembles include:
Any pant, any basic shirt with nickel-plated jewelry, any tie and any vest or cummerbund.



POCKET SQUARES

An essential component of every ensemble, a colorful pocket square is available to match nearly every fullback vest or tie offered. Don't forget to add one to your look!



ACCIDENTAL DAMAGE WAIVER (ADW) - added to each rental

The ADW relieves you from additional charges resulting from accidental damages while the tuxedo is in your possession. The ADW does not cover malicious damages, lost or stolen items, or any late return charges.

All Tuxedo and Suit Rentals MUST be returned the next business day to avoid additional rental charges!



BLACK STYLES

U Ultra Slim Fit

Trim and tapered styling, fits close to the body.



921-Legacy Performance Stretch Tuxedo
by Michael Kors
page 26



471-Sterling Wedding Suit
by Michael Kors
page 32



991-Berkeley Tuxedo
by Michael Kors
page 34

S Slim Fit

Contemporary styling with a slimming appearance.



472-Sterling Wedding Suit
by Michael Kors
page 33



990-Berkeley Tuxedo
by Michael Kors
page 35



192-Granite Aries Paisley Tuxedo
by Mark of Distinction
page 43



930-Manhattan Tuxedo
by Tony Bowls
page 49

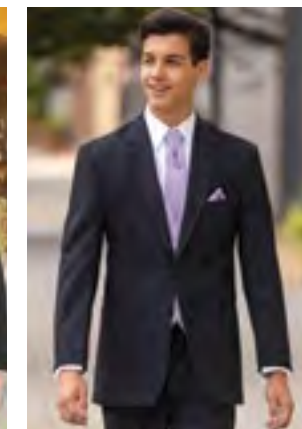
BLACK STYLES

M Modern Fit

Fashion-forward styling with a flattering silhouette.



822-Cyprus Tuxedo
by Stephen Geoffrey
page 50



852-Emerson Tuxedo
by Stephen Geoffrey
page 51



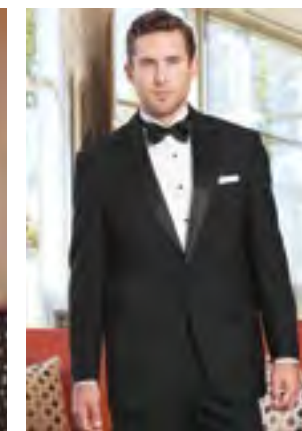
802-Troy Tuxedo
by Stephen Geoffrey
page 52

T Traditional Fit

A classic, fuller cut tuxedo.



820-Classic Notch Tuxedo
-
page 58



880-Classic Peak Tuxedo
-
page 61



588-Classic Peak Fulldress
-
page 62



stephengeoffrey

Emerson
Style 852

MICHAEL
MICHAEL KORS

Legacy Ultra Slim Fit
Performance Stretch Tuxedo
Style 921



ALLURE MEN

Heather Grey Clayton
Ultra Slim Fit Suit
Style 262

GREY STYLES

U Ultra Slim Fit Trim and tapered styling, fits close to the body.



350-Performance Stretch Wedding Suit
by Michael Kors
page 22



391-Sterling Wedding Suit
by Michael Kors
page 30



262-Clayton Suit
by Allure Men
page 37



231-Plaid Hamilton Suit
by Ike Behar
page 38

GREY STYLES

S Slim Fit Contemporary styling with a slimming appearance.



392-Sterling Wedding Suit
by Michael Kors
page 31



362-Aspen Tuxedo
by Stephen Geoffrey
page 46



322-Aspen Tuxedo
by Stephen Geoffrey
page 47



301-Portofino Tuxedo
by Tony Bowls
page 48



MICHAEL MICHAEL KORS

Steel Grey Sterling
Slim Fit Wedding Suit
Style 392



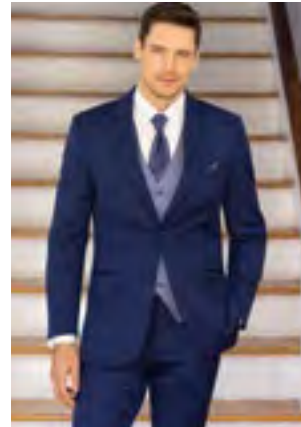
**Cobalt Aries Paisley
Slim Fit Tuxedo**
Style 132

BLUE STYLES



Ultra Slim Fit

Trim and tapered styling, fits close to the body.



**302-Performance Stretch
Wedding Suit**
by Michael Kors
page 24



371-Sterling Wedding Suit
by Michael Kors
page 28



221-Lane Tuxedo
by Ike Behar
page 39



211-Tribeca Tuxedo
by Ike Behar
page 40



Slim Fit

Contemporary styling with a slimming appearance.



372-Sterling Wedding Suit
by Michael Kors
page 29



132-Cobalt Aries Paisley Tuxedo
by Mark of Distinction
page 44



382-Aspen Tuxedo
by Stephen Geoffrey
page 45

RED & TAN STYLES

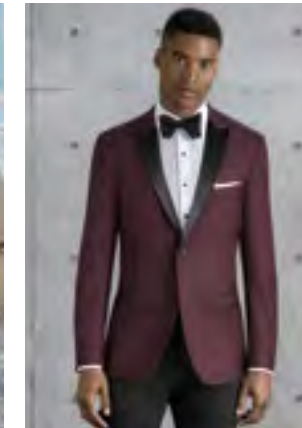


Ultra Slim Fit

Trim and tapered styling, fits close to the body.



202-Brunswick Suit
by Allure Men
page 36



201-Burgundy Empire Tuxedo
by Kenneth Cole
page 41



Slim Fit

Contemporary styling with a slimming appearance.



122-Apple Red Aries Paisley Tuxedo
by Mark of Distinction
page 42



252-Havana Suit
by Lord West
page 53



KENNETH COLE

Burgundy Empire Ultra Slim Fit Tuxedo
Style 201

WHITE & IVORY STYLES

U Ultra Slim Fit

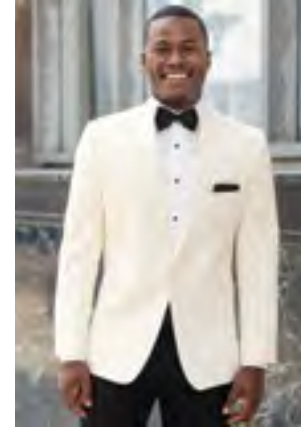
Trim and tapered styling, fits close to the body.



751-Waverly Tuxedo
by Ike Behar
page 55

S Slim Fit

Contemporary styling with a slimming appearance.



601-Classic Shawl
by Stephen Geoffrey
page 57



701-Classic Shawl
-
page 59

M Modern Fit

Fashion-forward styling with a flattering silhouette.



712-Troy Tuxedo
by Stephen Geoffrey
page 54



602-Troy Tuxedo
by Stephen Geoffrey
page 56

T Traditional Fit

A classic, fuller cut tuxedo.



571-Troy Fulldress
by Stephen Geoffrey
page 60



560-Troy Fulldress
by Stephen Geoffrey
page 60

FASHION STYLES

U Ultra Slim Fit

Trim and tapered styling, fits close to the body.



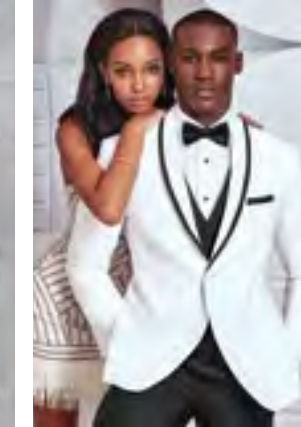
231-Plaid Hamilton Suit
by Ike Behar
page 38



211-Tribeca Tuxedo
by Ike Behar
page 40



201-Empire Tuxedo
by Kenneth Cole
page 41



751-Waverly Tuxedo
by Ike Behar
page 55

S Slim Fit

Contemporary styling with a slimming appearance.



122-Apple Red Aries Paisley Tuxedo
by Mark of Distinction
page 42



192-Granite Aries Paisley Tuxedo
by Mark of Distinction
page 43



132-Cobalt Aries Paisley Tuxedo
by Mark of Distinction
page 44



301-Portofino Tuxedo
by Tony Bowls
page 48



MOD
MARK OF DISTINCTION

Aries Paisley
Slim Fit Tuxedos

RENT
Blake rented his suit and had it shipped to his office

BUY
David wears suits regularly, loved the color, and bought it

RENT
Michael picked up his suit at a local store

BUY
Josh bought his suit as a momento of his wedding day

RENT
Chase lives out of town, had his suit shipped, and brought it along



shown:
ALLURE MEN®
Allure Men Heather Grey Clayton Suit - Style 262/N262

RENT OR BUY
THESE STYLES

RENT OR BUY

OUR MOST POPULAR DESIGNER SUIT STYLES!

Michael Kors
Navy Sterling
Wedding Suit
Styles 372/N372

Michael Kors
Blue Performance
Stretch Wedding Suit
Styles 302/N302

Allure Men
Heather Grey
Clayton Suit
Styles 262/N262

Michael Kors
Steel Grey
Sterling
Wedding Suit
Styles 392/N392

Michael Kors
Medium Grey
Performance Stretch
Wedding Suit
Styles 350/N350

MICHAEL KORS
Navy Sterling
Slim Fit Wedding Suit

To Rent
See page 29 / Style 372
To Buy
See page 65 / Style N372

RENT OR BUY
THIS STYLE



MICHAEL KORS
Blue Performance Stretch
Ultra Slim Fit Wedding Suit

To Rent
 See page 24 / Style 302
 To Buy
 See page 64 / Style N302

MICHAEL KORS
Medium Grey
Performance Stretch
Ultra Slim Fit Wedding Suit

To Rent
 See page 22 / Style 350
 To Buy
 See page 66 / Style N350





ALLURE MEN
Heather Grey Clayton
Ultra Slim Fit Suit

To Rent
See page 37 / Style 262
To Buy
See page 67 / Style N262

MICHAEL KORS
Steel Grey Sterling
Slim Fit Wedding Suit

To Rent
See page 31 / Style 392
To Buy
See page 68 / Style N392



MICHAEL KORS

Medium Grey Performance Stretch Wedding Suit Style 350

RENT OR BUY THIS STYLE

To BUY see page 66

Features:

- ▶ Tailored to fit all body types
- ▶ CoolMax® performance stretch fabric
- ▶ Self-framed notch lapel, side-vented, 29 1/2" length
- ▶ Shown with ultra slim fit pants with belt loops and buttons to accommodate suspenders

Fabric Content:

CoolMax® / Sorona® / Wool

Size Scale: B - see page 71

Men's coat sizes: 34-66

Boys' coat sizes: 3-18

350 pant sizes: 18-65

To order ensemble as shown:

Coat	350
Ultra Slim Fit Pants	350
Shirt (upcharge)	96W
Tie	BNST
Fullback Vest	FNST
Jewelry	BLACK
Formal Shoes (upcharge)	COP
Pocket Square (purchase only)	PNST

Grey Pant Option:

Ultra Slim Fit Pants	350
----------------------	------------



Black/Brown Reversible Belt Available
Specify NBLT; for purchase only



Trim and tapered styling, fits close to the body.



RENT OR BUY THIS STYLE



The Michael Kors Medium Grey Performance Stretch Wedding Suit is tailored in a unique fabric comprised of CoolMax for comfort and Sorona for maximum flexibility. You'll look great and stay comfortable and mobile during your event and the party that follows.

This style is available to RENT or BUY.

To order ensemble A as shown:

Tie	WXNU
Fullback Vest	F350
Pocket Square (purchase only)	PWNU

To order ensemble B as shown:

Tie	WXFO
Fullback Vest	F350
Pocket Square (purchase only)	PWFO

To order ensemble C as shown:

Tie	WXNU
Fullback Vest	F350
Pocket Square (purchase only)	PWNU

To order ensemble D as shown:

Tie	WXPR
Fullback Vest	F350
Pocket Square (purchase only)	PWPR



D

DIAMOND COLLECTION

B

MICHAEL KORS

Blue Performance Stretch Wedding Suit

Style 302

RENT
OR
BUY
THIS STYLE

To BUY see page 64

Features:

- ▶ Tailored to fit all body types
- ▶ CoolMax® performance stretch fabric
- ▶ Self-framed notch lapel, side-vented, 30 1/2" length
- ▶ Shown with ultra slim fit pants with belt loops and buttons to accommodate suspenders

Fabric Content:

CoolMax® / Sorona® / Wool

Size Scale: B - see page 71

Men's coat sizes: 34-66

Boys' coat sizes: 3-18

302 pant sizes: 18-65

To order ensemble as shown:

Coat	302
Ultra Slim Fit Pants	302
Shirt (upcharge)	96W
Tie	WNMB
Fullback Vest	FNMB
Jewelry	BLACK
Formal Shoes (upcharge)	COP
Pocket Square (purchase only)	PNMB

Blue Pant Option:

Ultra Slim Fit Pants	302
----------------------	------------



Black/Brown Reversible Belt Available
Specify NBLT; for purchase only



Trim and tapered styling,
fits close to the body.



RENT
OR
BUY
THIS STYLE



Tailored in a unique fabric comprised of CoolMax® for comfort and Sorona® for maximum flexibility, the **Michael Kors Blue Performance Stretch Wedding Suit** looks and feels great during your event and the celebration that follows. The suit to wear when having fun!

This style is available to RENT or BUY.

To order ensemble A as shown:

Tie	WXQZ
Fullback Vest	F302
Pocket Square (purchase only)	PWQZ

To order ensemble B as shown:

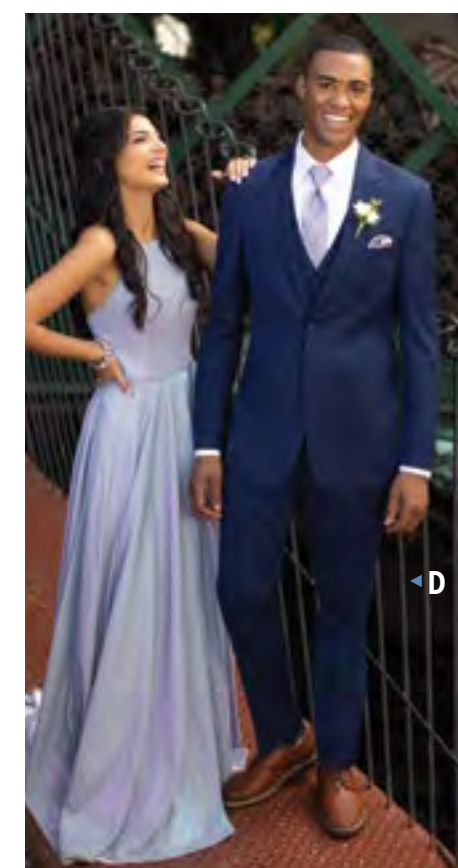
Tie	WXIV
Fullback Vest	F302
Pocket Square (purchase only)	PWIV

To order ensemble C as shown:

Tie	WXIV
Fullback Vest	F302
Pocket Square (purchase only)	PWIV

To order ensemble D as shown:

Tie	WFDL
Fullback Vest	F302
Pocket Square (purchase only)	PFDL



MICHAEL KORS

Legacy Performance Stretch Tuxedo

Style 921

Features:

- ▶ Tailored to fit all body types
- ▶ CoolMax® performance stretch fabric
- ▶ Satin notch lapel, side-vented, 30 1/2" length
- ▶ Shown with ultra slim fit pants with buttons to accommodate suspenders

Fabric Content:

CoolMax® / Sorona® / Wool

Size Scale: B - see page 71

Men's coat sizes: 34-66

Boys' coat sizes: 3-18

921 pant sizes: 18-65

To order ensemble as shown:

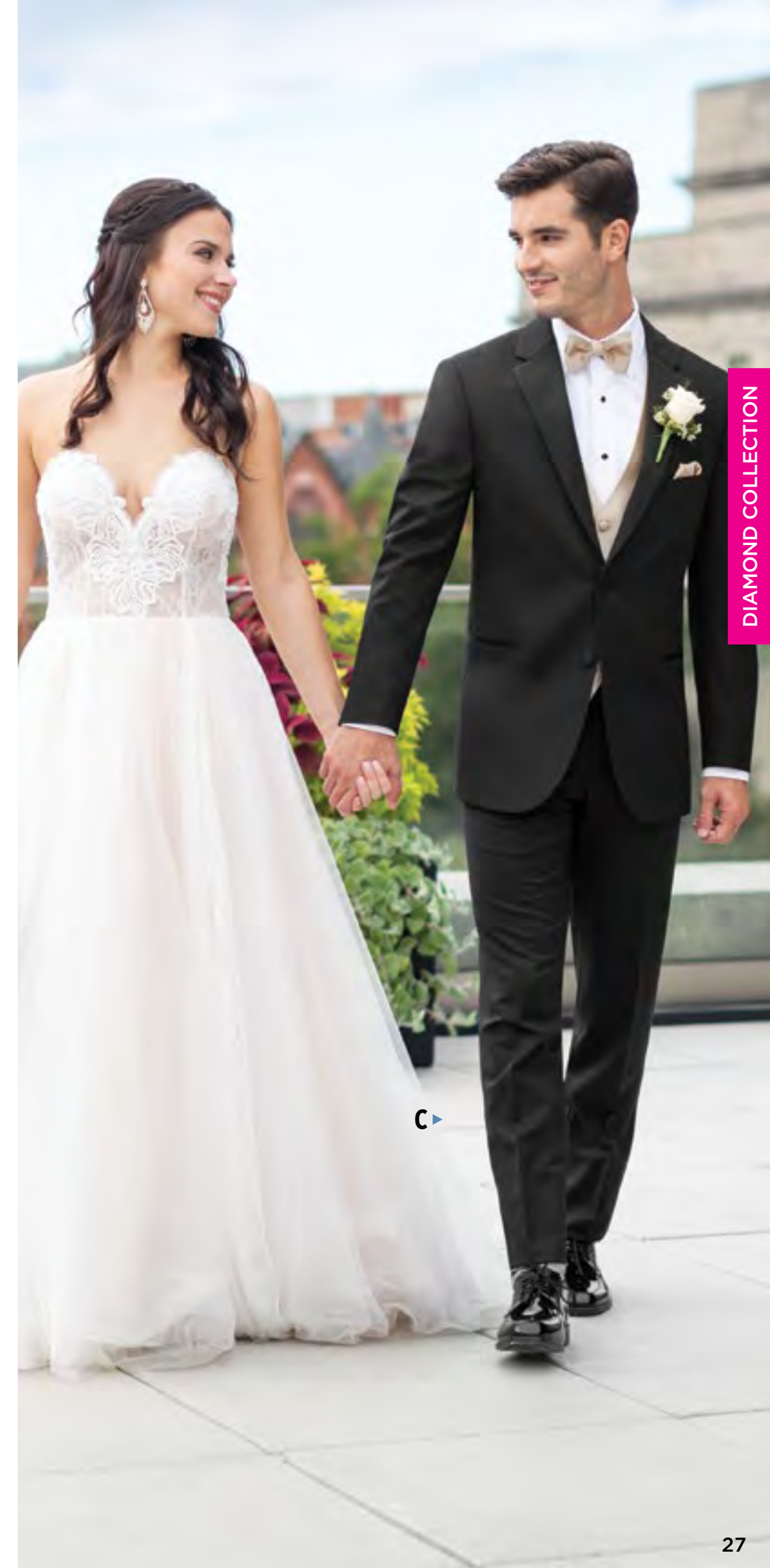
Coat	921
Ultra Slim Fit Pants	921
Shirt (upcharge)	96W
Tie	BSAT
Fullback Vest	F900
Jewelry	BLACK
Formal Shoes (upcharge)	BXS
Pocket Square (purchase only)	PSWH

Black Pant Option:

Ultra Slim Fit Pants	921
----------------------	-----



Trim and tapered styling, fits close to the body.



The Michael Kors Legacy Performance Stretch Tuxedo

is tailored in a unique fabric comprised of CoolMax® for comfort and Sorona® for maximum flexibility. You'll know you are wearing something special the moment you slip it on. A special tux for your special occasion.

To order ensemble A as shown:

Tie	BSAT
Fullback Vest	F900
Pocket Square (purchase only)	PSWH

To order ensemble B as shown:

Tie	WFWI
Fullback Vest	F900
Pocket Square (purchase only)	PFWI

To order ensemble C as shown:

Tie	BXNU
Fullback Vest	EXNU
Pocket Square (purchase only)	PWNU

MICHAEL KORS

Navy Sterling Wedding Suit

Style 371

Features:

- ▶ Self-framed notch lapel, side-vented, 30¹/₂" length
- ▶ Shown with ultra slim fit pants with belt loops and buttons to accommodate suspenders

Fabric Content:

Venetian Super 130's Wool

Size Scale: E - see page 71

Men's coat sizes: 34-44

Boys' coat sizes: N/A

371 pant sizes: 27-44

Companion Coat:

Style 372 - Navy Sterling Slim Fit Wedding Suit; see page 29

To order ensemble as shown:

Coat	371
Ultra Slim Fit Pants	371
Shirt (upcharge)	96W
Tie	BXBL
Fullback Vest	F372
Jewelry	BLACK
Formal Shoes (upcharge)	CXS
Pocket Square (purchase only)	PSWH
Belt (purchase only)	NBLT

Navy Pant Options:

Ultra Slim Fit Pants	371
Modern Slim Fit Pants	372



Black/Brown Reversible Belt Available
Specify NBLT; for purchase only



Trim and tapered styling,
fits close to the body.

AVAILABLE IN
TWO FITS:

ULTRA SLIM FIT
Shown

SLIM FIT
See page 29

RENT
OR
BUY
THIS STYLE

To BUY see page 65



MICHAEL KORS

Navy Sterling Wedding Suit

Style 372

Features:

- ▶ Self-framed notch lapel, side-vented, 30¹/₂" length
- ▶ Shown with modern slim fit pants with belt loops and buttons to accommodate suspenders

Fabric Content:

Venetian Super 130's Wool

Size Scale: B - see page 71

Men's coat sizes: 34-66

Boys' coat sizes: 3-18

372 pant sizes: 18-65

Companion Coat:

Style 371 - Navy Sterling Ultra Slim Fit Wedding Suit; see page 28

To order ensemble as shown:

Coat	372
Modern Slim Fit Pants	372
Shirt (upcharge)	96W
Tie	WFSE
Fullback Vest	F372
Jewelry	BLACK
Formal Shoes (upcharge)	CXS
Pocket Square (purchase only)	PFSE
Belt (purchase only)	NBLT

Navy Pant Options:

Ultra Slim Fit Pants	371
Modern Slim Fit Pants	372

AVAILABLE IN
TWO FITS:

SLIM FIT
Shown

ULTRA SLIM FIT
See page 28



Contemporary styling with
a slimming appearance.



MICHAEL KORS

Steel Grey Sterling Wedding Suit

Style 391

Features:

- ▶ Self-framed notch lapel, side-vented, 30¹/₂" length
- ▶ Shown with ultra slim fit pants with belt loops and buttons to accommodate suspenders

Fabric Content:

Venetian Super 130's Wool

Size Scale:

E - see page 71
Men's coat sizes: 34-44
Boys' coat sizes: N/A
391 pant sizes: 27-44

Companion Coat:

Style 392 - Steel Grey Sterling Slim Fit Wedding Suit; see page 31

To order ensemble as shown:

Coat	391
Ultra Slim Fit Pants	391
Shirt (upcharge)	96W
Tie	WNWI
Fullback Vest	F392
Jewelry	BLACK
Formal Shoes (upcharge)	CXS
Pocket Square (purchase only)	PNWI
Belt (purchase only)	NBLT

Steel Grey Pant Options:

Ultra Slim Fit Pants	391
Modern Slim Fit Pants	392



Black/Brown Reversible Belt Available
 Specify NBLT; for purchase only



Trim and tapered styling, fits close to the body.

AVAILABLE IN
TWO FITS:

ULTRA SLIM FIT

Shown

SLIM FIT

See page 31



To BUY see page 68

MICHAEL KORS

Steel Grey Sterling Wedding Suit

Style 392

Features:

- ▶ Self-framed notch lapel, side-vented, 30¹/₂" length
- ▶ Shown with modern slim fit pants with belt loops and buttons to accommodate suspenders

Fabric Content:

Venetian Super 130's Wool

Size Scale:

B - see page 71
Men's coat sizes: 34-66
Boys' coat sizes: 3-18
392 pant sizes: 18-65

Companion Coat:

Style 391 - Steel Grey Sterling Ultra Slim Fit Wedding Suit; see page 30

To order ensemble as shown:

Coat	392
Modern Slim Fit Pants	392
Shirt (upcharge)	96W
Tie	BNST
Fullback Vest	F392
Jewelry	BLACK
Formal Shoes (upcharge)	COP
Pocket Square (purchase only)	PNST
Belt (purchase only)	NBLT

Steel Grey Pant Options:

Ultra Slim Fit Pants	391
Modern Slim Fit Pants	392

AVAILABLE IN
TWO FITS:

SLIM FIT

Shown

ULTRA SLIM FIT

See page 30



Contemporary styling with a slimming appearance.

DIAMOND COLLECTION

MICHAEL KORS

Black Sterling Wedding Suit

Style 471

Features:

- ▶ Self-framed notch lapel, side-vented, 30 1/2" length
- ▶ Shown with ultra slim fit pants with belt loops and buttons to accommodate suspenders

Fabric Content:

Venetian Super 130's Wool

Size Scale: E - see page 71

Men's coat sizes: 34-44

Boys' coat sizes: N/A

471 pant sizes: 27-44

Companion Coat:

Style 472 - Black Sterling Slim Fit Wedding Suit; see page 33

To order ensemble as shown:

Coat	471
Ultra Slim Fit Pants	471
Shirt (upcharge)	96W
Tie	BXBL
Fullback Vest	F900
Jewelry	BLACK
Formal Shoes (upcharge)	BXS
Pocket Square (purchase only)	PSWH
Belt (purchase only)	NBLT

Black Pant Options:

Ultra Slim Fit Pants	471
Modern Slim Fit Pants	472



Black/Brown Reversible Belt Available
Specify NBLT; for purchase only



Trim and tapered styling,
fits close to the body.

AVAILABLE IN
TWO FITS:
ULTRA SLIM FIT
Shown
SLIM FIT
See page 33



MICHAEL KORS

Black Sterling Wedding Suit

Style 472

Features:

- ▶ Self-framed notch lapel, side-vented, 30 1/2" length
- ▶ Shown with modern slim fit pants with belt loops and buttons to accommodate suspenders

Fabric Content:

Venetian Super 130's Wool

Size Scale: B - see page 71

Men's coat sizes: 34-66

Boys' coat sizes: 3-18

472 pant sizes: 18-65

Companion Coat:

Style 471 - Black Sterling Ultra Slim Fit Wedding Suit; see page 32

To order ensemble as shown:

Coat	472
Modern Slim Fit Pants	472
Shirt (upcharge)	96W
Tie	BXBL
Fullback Vest	F900
Jewelry	BLACK
Formal Shoes (upcharge)	BXS
Pocket Square (purchase only)	PWWH
Belt (purchase only)	NBLT

Black Pant Options:

Ultra Slim Fit Pants	471
Modern Slim Fit Pants	472

AVAILABLE IN
TWO FITS:
SLIM FIT
Shown
ULTRA SLIM FIT
See page 32



Contemporary styling with
a slimming appearance.



MICHAEL KORS

Berkeley Tuxedo Style 991

Features:

- ▶ Grosgrain notch lapel, side-vented, 30 1/2" length
- ▶ Grosgrain trimmed pockets
- ▶ Shown with ultra slim fit pants with no stripe

Fabric Content:

Venetian Super 130's Wool

Size Scale: E - see page 71

Men's coat sizes: 34-44

Boys' coat sizes: N/A

991 pant sizes: 18-59

Companion Coat:

Style 990 - Berkeley Slim Fit; see page 35

To order ensemble as shown:

Coat	991
Ultra Slim Fit Pants	991
Shirt (upcharge)	96W
Tie	BXBL
Fullback Vest	F900
Jewelry	BLACK
Formal Shoes (upcharge)	BDS
Pocket Square (purchase only)	PSWH

Black Pant Options:

Ultra Slim Fit Pants	991
Modern Slim Fit Pants	990



Trim and tapered styling,
fits close to the body.

AVAILABLE IN
TWO FITS:

ULTRA SLIM FIT

Shown

SLIM FIT

See page 35

MICHAEL KORS

Berkeley Tuxedo Style 990

Features:

- ▶ Grosgrain notch lapel, side-vented, 30 1/2" length
- ▶ Grosgrain trimmed pockets
- ▶ Shown with modern slim fit pants with grosgrain piping on the leg

Fabric Content:

Venetian Super 130's Wool

Size Scale: B - see page 71

Men's coat sizes: 34-66

Boys' coat sizes: 3-18

990 pant sizes: 18-65

Companion Coat:

Style 991 - Berkeley Ultra Slim Fit;
see page 34

To order ensemble as shown:

Coat	990
Modern Slim Fit Pants	990
Shirt (upcharge)	96W
Tie	BXBL
Fullback Vest	F900
Jewelry	BLACK
Formal Shoes (upcharge)	BDS
Pocket Square (purchase only)	PSWH

Black Pant Options:

Ultra Slim Fit Pants	991
Modern Slim Fit Pants	990



Contemporary styling with
a slimming appearance.

AVAILABLE IN
TWO FITS:

SLIM FIT

Shown

ULTRA SLIM FIT

See page 34

ALLURE MEN

Sand Brunswick Suit

Style 202

Features:

- ▶ Tailored to fit all body types
- ▶ Self-framed notch lapel, side-vented, 30" length
- ▶ Shown with ultra slim fit pants with belt loops and buttons to accommodate suspenders

Fabric Content:

60/40 Super 130's Wool Blend

Size Scale: B - see page 71

Men's coat sizes: 34-66

Boys' coat sizes: 3-18

202 pant sizes: 18-65

To order ensemble as shown:

Coat	202
Ultra Slim Fit Pants	202
Shirt (upcharge)	96W
Tie	WFWI
Fullback Vest	F202
Jewelry	BLACK
Formal Shoes (upcharge)	COP
Pocket Square (purchase only)	PFWI
Belt (purchase only)	NBLT

Sand Pant Option:

Ultra Slim Fit Pants	202
----------------------	-----



Trim and tapered styling, fits close to the body.



To BUY see page 67



ALLURE MEN

Heather Grey Clayton Suit

Style 262

Features:

- ▶ Tailored to fit all body types
- ▶ Self-framed notch lapel, side-vented, 29 1/8" length
- ▶ Shown with ultra slim fit pants with no stripe

Fabric Content:

Super 130's Wool

Size Scale: B - see page 71

Men's coat sizes: 34-66

Boys' coat sizes: 3-18

262 pant sizes: 18-65

To order ensemble as shown:

Coat	262
Ultra Slim Fit Pants	262
Shirt (upcharge)	96W
Tie	BXNA
Fullback Vest	F262
Jewelry	BLACK
Formal Shoes (upcharge)	CXS
Pocket Square (purchase only)	PWNA

Heather Grey Pant Option:

Ultra Slim Fit Pants	262
----------------------	-----



Trim and tapered styling, fits close to the body.

**Grey Plaid
Hamilton Suit**
Style 231

Features:

- ▶ Tailored to fit all body types
- ▶ Self notch lapel, flap pockets, side-vented, 30" length
- ▶ Shown with ultra slim fit pants with belt loops and buttons to accommodate suspenders

Fabric Content:

Super 100's Wool

Size Scale: D - see page 71

Men's coat sizes: 34-60

Boys' coat sizes: 3-18

231 pant sizes: 18-59

To order ensemble as shown:

Coat	231
Ultra Slim Fit Pants	231
Shirt (upcharge)	96W
Tie	BXBH
Fullback Vest	EXBH
Jewelry	BLACK
Formal Shoes (upcharge)	CXS
Pocket Square (purchase only)	PWBH
Belt (purchase only)	NBLT

Grey Plaid Pant Option:

Ultra Slim Fit Pants	231
----------------------	------------



Black/Brown Reversible Belt Available
Specify **NBLT**; for purchase only



Trim and tapered styling,
fits close to the body.



**Indigo Blue
Lane Tuxedo**
Style 221

Features:

- ▶ Tailored to fit all body types
- ▶ Satin-edged peak lapel, side-vented, 29 1/4" length
- ▶ Shown with ultra slim fit pants with no stripe

Fabric Content:

Super 120's Wool

Size Scale: B - see page 71

Men's coat sizes: 34-66

Boys' coat sizes: 3-18

221 pant sizes: 18-65

To order ensemble as shown:

Coat	221
Ultra Slim Fit Pants	221
Shirt (upcharge)	96W
Tie	BXCP
Fullback Vest	EXCP
Jewelry	BLACK
Formal Shoes (upcharge)	CXS
Pocket Square (purchase only)	PWCP

Indigo Blue Pant Option:

Ultra Slim Fit Pants	221
----------------------	------------



Trim and tapered styling,
fits close to the body.



**Cobalt Blue
Tribeca Tuxedo**
Style 211

Features:

- ▶ Tailored to fit all body types
- ▶ Black satin peak lapel, side-vented, 30" length
- ▶ Black satin double besom pockets
- ▶ Shown with ultra slim fit pants with no stripe

Fabric Content:

Super 120's Wool

Size Scale: D - see page 71

Men's coat sizes: 34-60

Boys' coat sizes: 3-18

211 pant sizes: 18-59

To order ensemble as shown:

Coat	211
Ultra Slim Fit Pants	211
Shirt (upcharge)	96W
Tie	BXBL
Fullback Vest	EXBL
Jewelry	BLACK
Formal Shoes (upcharge)	BDS
Pocket Square (purchase only)	PSWH

Cobalt Blue Pant Option:

Ultra Slim Fit Pants **211**

Black Pant Options:

Ultra Slim Fit Pants **991**

Modern Slim Fit Pants **990**



Trim and tapered styling,
fits close to the body.



**Burgundy
Empire Tuxedo**
Style 201

Features:

- ▶ Tailored to fit all body types
- ▶ Black satin peak lapel, side-vented, 30 1/2" length
- ▶ Black satin double besom pockets
- ▶ Shown with black ultra slim fit pants with no stripe

Fabric Content:

Super 120's Wool

Size Scale: D - see page 71

Men's coat sizes: 34-60

Boys' coat sizes: 3-18

991 pant sizes: 18-59

To order ensemble as shown:

Coat	201
Ultra Slim Fit Pants	991
Shirt (upcharge)	96W
Tie	BSAT
Jewelry	BLACK
Formal Shoes (upcharge)	BDS
Pocket Square (purchase only)	PSWH

Black Pant Options:

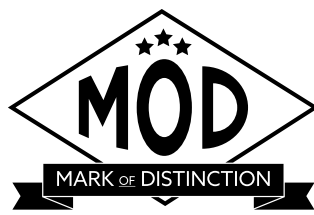
Ultra Slim Fit Pants **991**

Modern Slim Fit Pants **990**



Trim and tapered styling,
fits close to the body.





Apple Red Aries Paisley Tuxedo Style 122

Features:

- ▶ Black satin shawl lapel, side-vented, 30 1/2" length
- ▶ Fabric covered buttons
- ▶ Limited size scale
- ▶ Shown with black ultra slim fit pants with no stripe

Fabric Content:

100% Polyester

Size Scale: F - see page 71

Men's coat sizes: 34-50 (even sizes only)

Boys' coat sizes: 14-18 (even sizes only)

991 pant sizes: 18-59

To order ensemble as shown:

Coat	122
Ultra Slim Fit Pants	991
Shirt (upcharge)	96W
Tie	BSAT
Jewelry	BLACK
Formal Shoes (purchase only)	NBSSS
Pocket Square (purchase only)	PSBL

Black Pant Options:

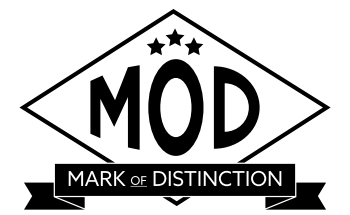
Ultra Slim Fit Pants	991
Modern Slim Fit Pants	990



Contemporary styling with a slimming appearance.



To BUY see JFW
For Purchase Catalog



Granite Aries Paisley Tuxedo Style 192

Features:

- ▶ Black satin shawl lapel, side-vented, 30 1/2" length
- ▶ Fabric covered buttons
- ▶ Limited size scale
- ▶ Shown with black ultra slim fit pants with no stripe

Fabric Content:

100% Polyester

Size Scale: F - see page 71

Men's coat sizes: 34-50 (even sizes only)

Boys' coat sizes: 14-18 (even sizes only)

991 pant sizes: 18-59

To order ensemble as shown:

Coat	192
Ultra Slim Fit Pants	991
Shirt (upcharge)	96W
Tie	BSAT
Jewelry	BLACK
Formal Shoes (purchase only)	NBLVS
Pocket Square (purchase only)	PSWH

Black Pant Options:

Ultra Slim Fit Pants	991
Modern Slim Fit Pants	990

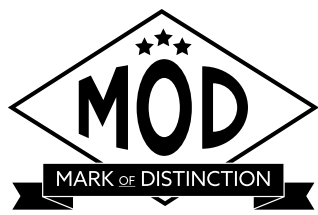


Contemporary styling with a slimming appearance.



To BUY see JFW
For Purchase Catalog





Cobalt Aries Paisley Tuxedo Style 132

Features:

- ▶ Black satin shawl lapel, side-vented, 30 1/2" length
- ▶ Fabric covered buttons
- ▶ Limited size scale
- ▶ Shown with black ultra slim fit pants with no stripe

Fabric Content:

100% Polyester

Size Scale: F - see page 71

Men's coat sizes: 34-50 (even sizes only)

Boys' coat sizes: 14-18 (even sizes only)

991 pant sizes: 18-59

To order ensemble as shown:

Coat	132
Ultra Slim Fit Pants	991
Shirt (upcharge)	96W
Tie	BSAT
Jewelry	BLACK
Formal Shoes (purchase only)	N3SSS
Pocket Square (purchase only)	PSBL

Black Pant Options:

Ultra Slim Fit Pants	991
Modern Slim Fit Pants	990



Contemporary styling with a slimming appearance.

**RENT
OR
BUY**
THIS STYLE

To BUY see JFW
For Purchase Catalog



SG
stephengeoffrey

Slate Blue Aspen Tuxedo Style 382

Features:

- ▶ Satin-edged notch lapel, side-vented, 30 1/2" length
- ▶ Shown with modern slim fit pants with no stripe

Fabric Content:

100% Wool

Size Scale: B2 - see page 71

Men's coat sizes: 34-66

Boys' coat sizes: 3-18

382 pant sizes: 18-65

To order ensemble as shown:

Coat	382
Modern Slim Fit Pants	382
Shirt (upcharge)	96W
Tie	WFBH
Fullback Vest	F382
Jewelry	BLACK
Formal Shoes (upcharge)	CXS
Pocket Square (purchase only)	PFBH

Slate Blue Pant Option:

Modern Slim Fit Pants	382
-----------------------	------------



Contemporary styling with a slimming appearance.



stephengeoffrey

Heather Grey Aspen Tuxedo

Style 362

Features:

- ▶ Satin-edged notch lapel, side-vented, 30 1/2" length
- ▶ Shown with modern slim fit pants with no stripe

Fabric Content:

100% Wool

Size Scale: B - see page 71

Men's coat sizes: 34-66

Boys' coat sizes: 3-18

362 pant sizes: 18-65

To order ensemble as shown:

Coat	362
Modern Slim Fit Pants	362
Shirt (upcharge)	96W
Tie	BXWH
Fullback Vest	F362
Jewelry	BLACK
Formal Shoes (upcharge)	CXS
Pocket Square (purchase only)	PWWH

Grey Pant Options:

Ultra Slim Fit Pants	361
Modern Slim Fit Pants	362



Contemporary styling with a slimming appearance.



stephengeoffrey

Grey Aspen Tuxedo

Style 322

Features:

- ▶ Satin-edged notch lapel, side-vented, 30 1/2" length
- ▶ Shown with modern slim fit pants with no stripe

Fabric Content:

100% Wool

Size Scale: B - see page 71

Men's coat sizes: 34-66

Boys' coat sizes: 3-18

322 pant sizes: 18-62

To order ensemble as shown:

Coat	322
Modern Slim Fit Pants	322
Shirt (upcharge)	96W
Tie	WWRP
Fullback Vest	F322
Jewelry	BLACK
Formal Shoes (upcharge)	BDS
Pocket Square (purchase only)	PWRP

Grey Pant Options:

Ultra Slim Fit Pants	321
Modern Slim Fit Pants	322



Contemporary styling with a slimming appearance.



PLATINUM COLLECTION

PLATINUM COLLECTION

Grey Portofino Tuxedo

Style 301

Features:

- ▶ Black satin peak lapel, non-vented, 30" length
- ▶ Black satin double besom pockets
- ▶ Shown with modern slim fit pants with a beaded stripe

Fabric Content:

55/45 Super Fine Wool Blend

Size Scale: B - see page 71

Men's coat sizes: 34-66

Boys' coat sizes: 3-18

301 pant sizes: 18-65

To order ensemble as shown:

Coat	301
Modern Slim Fit Pants	301
Shirt (upcharge)	96W
Tie	WKBL
Fullback Vest	F900
Jewelry	BLACK
Formal Shoes (upcharge)	BDS
Pocket Square (purchase only)	PSWH

Grey Pant Option:

Modern Slim Fit Pants **301**

Black Pant Options:

Ultra Slim Fit Pants	991
Modern Slim Fit Pants	850
Flat Front Pants	800



Contemporary styling with a slimming appearance.



Manhattan Tuxedo

Style 930

STYLE AVAILABLE FOR SINGLE ORDERS ONLY.

Features:

- ▶ Satin notch lapel, non-vented, 30" length
- ▶ Shown with modern slim fit pants with a beaded stripe

Fabric Content:

Super 130's Wool

Size Scale: B - see page 71

Men's coat sizes: 34-66

Boys' coat sizes: 3-18

930 pant sizes: 18-65

To order ensemble as shown:

Coat	930
Modern Slim Fit Pants	930
Shirt (upcharge)	96W
Tie	BSAT
Fullback Vest	F900
Jewelry	BLACK
Formal Shoes (upcharge)	BDS
Pocket Square (purchase only)	PSWH

Black Pant Option:

Modern Slim Fit Pants **930**



Contemporary styling with a slimming appearance.

PLATINUM COLLECTION

PLATINUM COLLECTION



stephengeoffrey

Cyprus Tuxedo Style 822

Features:

- ▶ Satin shawl lapel, non-vented, 3 1/2" length
- ▶ Shown with modern slim fit pants with a beaded stripe

Fabric Content:

100% Tropical Worsted Wool

Size Scale: B2 - see page 71

Men's coat sizes: 34-66

Boys' coat sizes: 3-18

850 pant sizes: 18-59

To order ensemble as shown:

Coat	822
Modern Slim Fit Pants	850
Shirt (upcharge)	76W
Tie	WSKG
Fullback Vest	SYKG
Jewelry	BLACK
Formal Shoes (upcharge)	BDS
Pocket Square (purchase only)	PSKG

Black Pant Options:

Modern Slim Fit Pants	850
Flat Front Pants	800



Fashion-forward styling with a flattering appearance.



stephengeoffrey

Emerson Tuxedo Style 852

Features:

- ▶ Grosgrain notch lapel, non-vented, 3 1/2" length
- ▶ Grosgrain buttons
- ▶ Shown with modern slim fit pants with a beaded stripe

Fabric Content:

100% Tropical Worsted Wool

Size Scale: B2 - see page 71

Men's coat sizes: 34-66

Boys' coat sizes: 3-18

850 pant sizes: 18-59

To order ensemble as shown:

Coat	852
Modern Slim Fit Pants	850
Shirt (upcharge)	96W
Tie	WKLA
Fullback Vest	HRLA
Jewelry	BLACK
Formal Shoes (upcharge)	BDS
Pocket Square (purchase only)	PKLA

Black Pant Options:

Modern Slim Fit Pants	850
Flat Front Pants	800



Fashion-forward styling with a flattering appearance.



PLATINUM COLLECTION

PLATINUM COLLECTION



stephengeoffrey

Black Troy Tuxedo Style 802

Features:

- ▶ Satin notch lapel, non-vented, 31½" length
- ▶ Shown with modern slim fit pants with a beaded stripe

Fabric Content:

100% Worsted Wool

Size Scale: A2 - see page 71

Men's coat sizes: 34-74

Boys' coat sizes: 3-18

850 pant sizes: 18-59

To order ensemble as shown:

Coat	802
Modern Slim Fit Pants	850
Shirt (upcharge)	96W
Tie	WKSI
Fullback Vest	HRSI
Jewelry	BLACK
Formal Shoes (upcharge)	BDS
Pocket Square (purchase only)	PKSI

Black Pant Options:

Modern Slim Fit Pants	850
Flat Front Pants	800



Fashion-forward styling with a flattering appearance.



LORD & WEST

Tan Havana Suit Style 252

Features:

- ▶ Self notch lapel, bone buttons, side-vented, 30" length
- ▶ Shown with modern slim fit pants with no stripe

Fabric Content:

Ultra Fine Poly / Wool Blend

Size Scale: B2 - see page 71

Men's coat sizes: 34-66

Boys' coat sizes: 3-18

252 pant sizes: 18-65

To order ensemble as shown:

Coat	252
Modern Slim Fit Pants	252
Shirt (upcharge)	96W
Tie	WRCP
Fullback Vest	F252
Jewelry	BLACK
Formal Shoes (upcharge)	CXS
Pocket Square (purchase only)	PKWH

Tan Pant Options:

Ultra Slim Fit Pants	251
Modern Slim Fit Pants	252



Contemporary styling with a slimming appearance.





stephengeoffrey

White Troy Tuxedo Style 712

Features:

- ▶ Satin notch lapel, non-vented, 3 1/2" length
- ▶ Shown with modern slim fit pants with a beaded stripe

Fabric Content:

100% Polyester

Size Scale: B - see page 71

Men's coat sizes: 34-66

Boys' coat sizes: 3-18

750 pant sizes: 18-65

To order ensemble as shown:

Coat	712
Modern Slim Fit Pants	750
Shirt (upcharge)	96W
Tie	BXWH
Fullback Vest	EXWH
Jewelry	PEARL
Formal Shoes (upcharge)	WAS
Pocket Square (purchase only)	PWWH

White Pant Option:

Modern Slim Fit Pants	750
-----------------------	-----



Fashion-forward styling with a flattering appearance.



I K E EVENING
BY KE BEHAR

Waverly Tuxedo Style 751

Features:

- ▶ Tailored to fit all body types
- ▶ Self shawl lapel edged in black satin, center-vented, 30" length
- ▶ Shown with black ultra slim fit pants with no stripe

Fabric Content:

100% Polyester

Size Scale: D - see page 71

Men's coat sizes: 34-60

Boys' coat sizes: 3-18

991 pant sizes: 18-59

To order ensemble as shown:

Coat	751
Ultra Slim Fit Pants	991
Shirt (upcharge)	96W
Tie	BXBL
Fullback Vest	EXBL
Jewelry	BLACK
Formal Shoes (upcharge)	BDS
Pocket Square (purchase only)	PWBL

White Pant Option:

Modern Slim Fit Pants	750
-----------------------	-----

Black Pant Options:

Ultra Slim Fit Pants	991
Modern Slim Fit Pants	850
Flat Front Pants	800



Trim and tapered styling, fits close to the body.

PLATINUM COLLECTION

PLATINUM COLLECTION



stephengeoffrey

Ivory Troy Tuxedo Style 602

Features:

- ▶ Satin notch lapel, non-vented, 31½" length
- ▶ Shown with modern slim fit pants with a beaded stripe

Fabric Content:

100% Polyester

Size Scale: B2 - see page 71

Men's coat sizes: 34-66

Boys' coat sizes: 3-18

650 pant sizes: 18-65

To order ensemble as shown:

Coat	602
Modern Slim Fit Pants	650
Shirt (upcharge)	96W
Tie	WRGO
Fullback Vest	HRGO
Jewelry	BLACK
Formal Shoes (upcharge)	IAS
Pocket Square (purchase only)	PKGO

Ivory Pant Option:

Modern Slim Fit Pants	650
-----------------------	------------



Fashion-forward styling with a flattering appearance.



stephengeoffrey

Ivory Classic Shawl Tuxedo Style 601

Features:

- ▶ Self shawl lapel, side-vented, 30½" length
- ▶ Shown with black ultra slim fit pants with no stripe

Fabric Content:

100% Polyester

Size Scale: B - see page 71

Men's coat sizes: 34-66

Boys' coat sizes: 3-18

991 pant sizes: 18-59

To order ensemble as shown:

Coat	601
Ultra Slim Fit Pants	991
Shirt (upcharge)	96W
Tie	BSAT
Sash	CUMB
Jewelry	BLACK
Formal Shoes (upcharge)	BDS
Pocket Square (purchase only)	PSBL

Ivory Pant Option:

Modern Slim Fit Pants	650
-----------------------	------------

Black Pant Options:

Ultra Slim Fit Pants	991
Modern Slim Fit Pants	850
Flat Front Pants	800



To BUY see JFW
For Purchase Catalog



PLATINUM COLLECTION



Contemporary styling with a slimming appearance.

Classic Notch Tuxedo

Style 820

Features:

- ▶ Satin notch lapel, non-vented, 3 1/2" length
- ▶ Shown with modern slim fit pants with a beaded stripe

Fabric Content:

100% Worsted Wool

Size Scale: A - see page 71; expanded sizes available

Men's coat sizes: 34-74

Boys' coat sizes: 2-18

850 pant sizes: 18-59

To order ensemble as shown:

Coat	820
Modern Slim Fit Pants	850
Shirt	85W
Tie	BSAT
Sash	CUMB
Jewelry	BLACK
Formal Shoes (upcharge)	BAS
Pocket Square (purchase only)	PSWH

Black Pant Options:

Modern Slim Fit Pants	850
Flat Front Pants	800



A classic, fuller cut tuxedo.



To BUY see JFW
For Purchase Catalog



White Classic Shawl Tuxedo

Style 701

Features:

- ▶ Self shawl lapel, flap pockets, non-vented, 30" length
- ▶ Shown with black modern slim fit pants with a beaded stripe

Fabric Content:

100% Polyester

Size Scale: B2 - see page 71

Men's coat sizes: 34-66

Boys' coat sizes: 3-18

850 pant sizes: 18-59

To order ensemble as shown:

Coat	701
Modern Slim Fit Pants	850
Shirt	85W
Tie	BSAT
Sash	CUMB
Jewelry	BLACK
Formal Shoes (upcharge)	BDS
Pocket Square (purchase only)	PSBL

White Pant Option:

Modern Slim Fit Pants	750
-----------------------	------------

Black Pant Options:

Modern Slim Fit Pants	850
Flat Front Pants	800



Contemporary styling with a slimming appearance.



A ▶



B ▶



stephengeoffrey

White Troy Fulldress Tuxedo

Style 571



A classic, fuller cut tuxedo.

Features:

- ▶ Six-button fulldress styling
- ▶ Satin notch lapel, center-vented tail, 39" length
- ▶ Shown with modern slim fit pants with a beaded stripe

Fabric Content:

100% Polyester

Size Scale: D - see page 71

Men's coat sizes: 34-60
Boys' coat sizes: 3-18
750 pant sizes: 18-65

To order ensemble A as shown:

Coat	571
Modern Slim Fit Pants	750
Shirt	86W
Tie	BDWH
Sash	CDWH
Jewelry	PEARL
Formal Shoes (upcharge)	WAS
Pocket Square (purchase only)	PSWH

White Pant Option:

Modern Slim Fit Pants	750
-----------------------	------------



stephengeoffrey

Ivory Troy Fulldress Tuxedo

Style 560



A classic, fuller cut tuxedo.

Features:

- ▶ Six-button fulldress styling
- ▶ Satin notch lapel, center-vented tail, 39" length
- ▶ Shown with modern slim fit pants with a beaded stripe

Fabric Content:

100% Polyester

Size Scale: D - see page 71

Men's coat sizes: 34-60
Boys' coat sizes: 3-18
650 pant sizes: 18-65

To order ensemble B as shown:

Coat	560
Modern Slim Fit Pants	650
Shirt	86I
Tie	BDDW
Sash	CDDW
Jewelry	PEARL
Formal Shoes (upcharge)	IAS
Pocket Square (purchase only)	PSIV

Ivory Pant Option:

Modern Slim Fit Pants	650
-----------------------	------------

Classic Peak Tuxedo

Style 880

Features:

- ▶ Satin peak lapel, center-vented, 3 1/2" length
- ▶ Shown with modern slim fit pants with a beaded stripe

Fabric Content:

100% Worsted Wool

Size Scale: A - see page 71;

expanded sizes available

Men's coat sizes: 34-74

Boys' coat sizes: 2-18

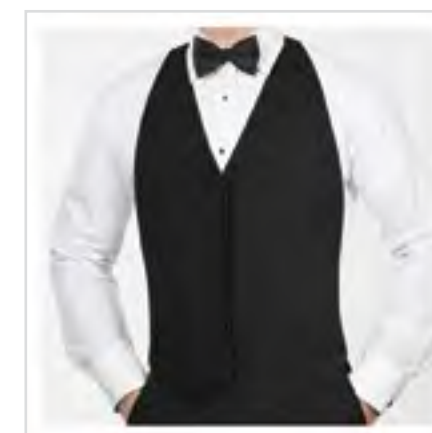
850 pant sizes: 18-59

To order ensemble as shown:

MAIN	
Coat	880
Modern Slim Fit Pants	850
Shirt	85W
Tie	BSAT
Sash	CUMB
Jewelry	BLACK
Formal Shoes (upcharge)	BAS
Pocket Square (purchase only)	PSWH
INSET	
Shirt (upcharge)	96W
Backless Vest	V880

Black Pant Options:

Modern Slim Fit Pants	850
Flat Front Pants	800



A classic, fuller cut tuxedo.

Classic Peak Fulldress Tuxedo Style 588

Features:

- ▶ Six-button fulldress styling
- ▶ Satin peak lapel, center-vented tail, 42" length
- ▶ Shown with modern slim fit pants with a beaded stripe

Fabric Content:

100% Tropical Worsted Wool

Size Scale: D - see page 71

Men's coat sizes: 34-60

Boys' coat sizes: 3-18

850 pant sizes: 18-59

To order ensemble as shown:

Coat	588
Modern Slim Fit Pants	850
Shirt	36W
Tie	BPIQ
Vest	VPIQ
Jewelry	PEARL
Formal Shoes (upcharge)	BAS
Pocket Square (purchase only)	PSWH

Black Pant Options:

Modern Slim Fit Pants	850
Flat Front Pants	800



SUITS TUXEDOS ACCESSORIES

for purchase

Reference For Purchase catalog for additional items



**RENT
OR
BUY**
THIS STYLE

To RENT see pages 24-25

MICHAEL KORS

**BLUE
PERFORMANCE
STRETCH
WEDDING SUIT**



**SEPARATES
COLLECTION**
Mix and match your coat and pant
sizes for the perfect fit.



**RENT
OR
BUY**
THIS STYLE

To RENT see page 29

MICHAEL KORS

**NAVY
STERLING
WEDDING SUIT**

**SEPARATES
COLLECTION**
Mix and match your coat and pant
sizes for the perfect fit.



**Blue Performance Stretch
Suit Coat | N302C**
Slim fit; 2-button; flap pockets; side-
vented; mitered sleeves with buttons

\$299.99
Coat Purchase Price

**Blue Performance Stretch
Suit Pants | N302P**
Slim fit; flat front; exact waist; belt loops;
buttons to accommodate suspenders

\$130.00
Pant Purchase Price

**Blue Performance Stretch
Fullback Vest | NF302**
4-button; adjustable back;
darted pockets

\$79.99
Fullback Vest Purchase Price

Fabric Content: CoolMax® /
Sorona® / Wool
Coat Sizing: Regular: 34-66
Short: 34-56
Long: 34-66
X-Long: 38-56
(even sizes only)
Pant Sizing: Regular: 28-66
Short: 28-66
Long: 28-66
(even sizes only)
Vest Sizing:
RXS - 5XA

Navy Sterling Suit Coat | N372C
Slim fit; 2-button; flap pockets; side-
vented; mitered sleeves with buttons

\$299.99
Coat Purchase Price

Navy Sterling Suit Pants | N372P
Slim fit; flat front; exact waist; belt loops;
buttons to accommodate suspenders

\$130.00
Pant Purchase Price

Navy Sterling Fullback Vest | NF372
4-button; adjustable back;
darted pockets

\$79.99
Fullback Vest Purchase Price

Fabric Content: Super 130's Wool
Coat Sizing: Regular: 34-66
Short: 34-56
Long: 34-66
X-Long: 38-56
(even sizes only)
Pant Sizing: Regular: 28-66
Short: 28-66
Long: 28-66
(even sizes only)
Vest Sizing:
RXS - 5XA

Also Shown: Floral Windsor Tie | NWFPT - see page 31 or JFW "For Purchase" catalog

Also Shown: Floral Windsor Tie | NWFSE - see page 31 in JFW "For Purchase" catalog



RENT OR BUY THIS STYLE

To RENT see page 22

MICHAEL KORS

MEDIUM GREY PERFORMANCE STRETCH WEDDING SUIT



SEPARATES COLLECTION Mix and match your coat and pant sizes for the perfect fit.

RENT OR BUY THIS STYLE

To RENT see page 37

ALLURE MEN®

HEATHER GREY CLAYTON SUIT

SEPARATES COLLECTION Mix and match your coat and pant sizes for the perfect fit.



Medium Grey Performance Stretch Suit Coat | N350C Slim fit; 2-button; flap pockets; side-vented; mitered sleeves with buttons

\$299.99 Coat Purchase Price

Medium Grey Performance Stretch Suit Pants | N350P Slim fit; flat front; exact waist; belt loops; buttons to accommodate suspenders

\$130.00 Pant Purchase Price

Medium Grey Performance Stretch Fullback Vest | NF350 4-button; adjustable back; darted pockets

\$79.99 Fullback Vest Purchase Price

Fabric Content: CoolMax® / Sorona® / Wool

Coat Sizing: Regular: 34-66 Short: 34-56 Long: 34-66 X-Long: 38-56 (even sizes only) Pant Sizing: Regular: 28-66 Short: 28-66 Long: 28-66 (even sizes only)

Vest Sizing: RXS - 5XA

Heather Grey Clayton Suit Coat | N262C Slim fit; 2-button; flap pockets; side-vented; mitered sleeves with buttons

\$299.99 Coat Purchase Price

Heather Grey Clayton Suit Pants | N262P Slim fit; flat front; exact waist; belt loops; buttons to accommodate suspenders

\$130.00 Pant Purchase Price

Heather Grey Clayton Fullback Vest | NF262 5-button; adjustable back; darted pockets

\$79.99 Fullback Vest Purchase Price

Fabric Content: Super 130's Wool

Coat Sizing: Regular: 34-66 Short: 34-56 Long: 34-66 X-Long: 38-56 (even sizes only) Pant Sizing: Regular: 28-66 Short: 28-66 Long: 28-66 (even sizes only)

Vest Sizing: RXS - 5XA

Also Shown: Solid Bow Tie | NBXNA - see page 32 in JFW "For Purchase" catalog

Also Shown: Solid Windsor Tie | NWWFB - see page 33 of JFW "For Purchase" catalog



**RENT
OR
BUY**
THIS STYLE

To RENT see page 31

MICHAEL KORS

**STEEL GREY
STERLING
WEDDING SUIT**

SEPARATES COLLECTION

Mix and match your coat and pant sizes for the perfect fit.

**RENT
OR
BUY**
THESE STYLES

MICHAEL KORS WINDSOR TIES

\$39.99

Pricing for Striped, Solid & Floral Windsor Ties

Available in men's regular and long sizes only. Boys' sizes not available for purchase. Rental styles are pre-tied.



Striped Windsor Ties
available in 28 colors
self-tie



Solid Windsor Ties
available in 25 colors
self-tie



Floral Windsor Ties
available in 24 colors
self-tie

**RENT
OR
BUY**
THESE STYLES

MICHAEL KORS BOW TIES

\$34.99

Pricing for Solid & Floral Bow Ties

Available in men's sizes only. Boys' sizes not available for purchase.



Solid Bow Ties
available in 15 colors
pre-tied



Floral Bow Ties
available in 18 colors
pre-tied

Steel Grey Sterling Suit Coat | N392C
Slim fit; 2-button; flap pockets; side-vented; mitered sleeves with buttons

\$299.99

Coat Purchase Price

Steel Grey Sterling Suit Pants | N392P
Slim fit; flat front; exact waist; belt loops; buttons to accommodate suspenders

\$130.00

Pant Purchase Price

Steel Grey Sterling Fullback Vest | NF392
4-button; adjustable back; darted pockets

\$79.99

Fullback Vest Purchase Price

Fabric Content: Super 130's Wool

Coat Sizing: Regular: 34-66
Short: 34-56
Long: 34-66
X-Long: 38-56 (even sizes only)

Vest Sizing:
RXS - 5XA

Pant Sizing: Regular: 28-66
Short: 28-66
Long: 28-66 (even sizes only)

Also Shown: Solid Bow Tie | NBXBL - see page 32 in JFW "For Purchase" catalog

Buy a Coat & Pant... Save on your Accessories!

FOR RENTAL

RENTAL PACKAGE with shoe

Package Price:

SHIRT



TIE



(bow or windsor)

VEST or SUSPENDER



POCKET SQUARE



SHOE



RENTAL PACKAGE without shoe

Package Price:

SHIRT



TIE



(bow or windsor)

VEST or SUSPENDER



POCKET SQUARE

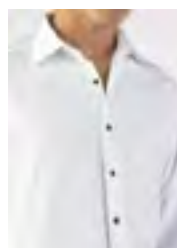


FOR PURCHASE

PURCHASE PACKAGE with vest

Package Price:

SHIRT



TIE



VEST



POCKET SQUARE



PURCHASE PACKAGE with suspender

Package Price:

SHIRT



TIE



SUSPENDER



POCKET SQUARE



SIZE SCALE REFERENCE GUIDE

Coat Sizing Scales

Use these sizing scales as guides to see which styles are available in a particular size.

SCALE A	
MEN'S	
Regular	34-74
Portly Regular	40-60
Short	34-60
Long	36-74
Extra Long	38-66
BOYS'	
Regular	2-18
Husky	8-18
Coats available in this scale:	
820 page 58	880 page 61

SCALE B2					
MEN'S					
Regular	34-66				
Short	34-56				
Long	36-66				
Extra Long	38-56				
BOYS'					
Regular	3-18				
Husky	8-16				
Coats available in this scale:					
252 page 53	382 page 45	602 page 56	701 page 59	822 page 50	852 page 51

SCALE F		
MEN'S		
Regular	34-50	
Short	34-50	
Long	34-50	
Extra Long	38-50	
BOYS'		
Regular	14-18	
Husky	N/A	
Coats available in this scale:		
122 page 42	132 page 44	192 page 43

Note: Even sizes only.

SCALE A2	
MEN'S	
Regular	34-74
Short	34-60
Long	36-74
Extra Long	38-66
BOYS'	
Regular	3-18
Husky	8-16
Coats available in this scale:	
802 page 52	

SCALE D					
MEN'S					
Regular	34-60				
Short	34-50				
Long	36-60				
Extra Long	38-50				
BOYS'					
Regular	3-18				
Husky	N/A				
Coats available in this scale:					
201 page 41	211 page 40	231 page 38	560 page 60	571 page 60	588 page 62
751 page 55					

Note: In size scale D, coat style 588 is available up to 68L and 68R. (All other sizing in size scale D applies.)

SCALE B					
MEN'S					
Regular	34-66				
Short	34-56				
Long	34-66				
Extra Long	38-56				
BOYS'					
Regular	3-18				
Husky	8-16				
Coats available in this scale:					
202 page 36	221 page 39	262 pages 20, 37, 67	301 page 48	302 pages 18, 24-25, 64	322 page 47
350 pages 19, 22-23, 66	362 page 46	372 pages 17, 29, 65	392 pages 21, 31, 68	472 page 33	601 page 57
712 page 54	921 pages 26-27	930 page 49	990 page 35		

SCALE E			
MEN'S			
Regular	34-44		
Short	34-44		
Long	34-44		
Extra Long	38-44		
BOYS'			
Regular	N/A		
Husky	N/A		
Coats available in this scale:			
371 page 28	391 page 30	471 page 32	991 page 34

Note: 371, 391 and 471 pants available in sizes 27-44. 991 pant available in sizes 18-59.

COAT FITS DEFINED



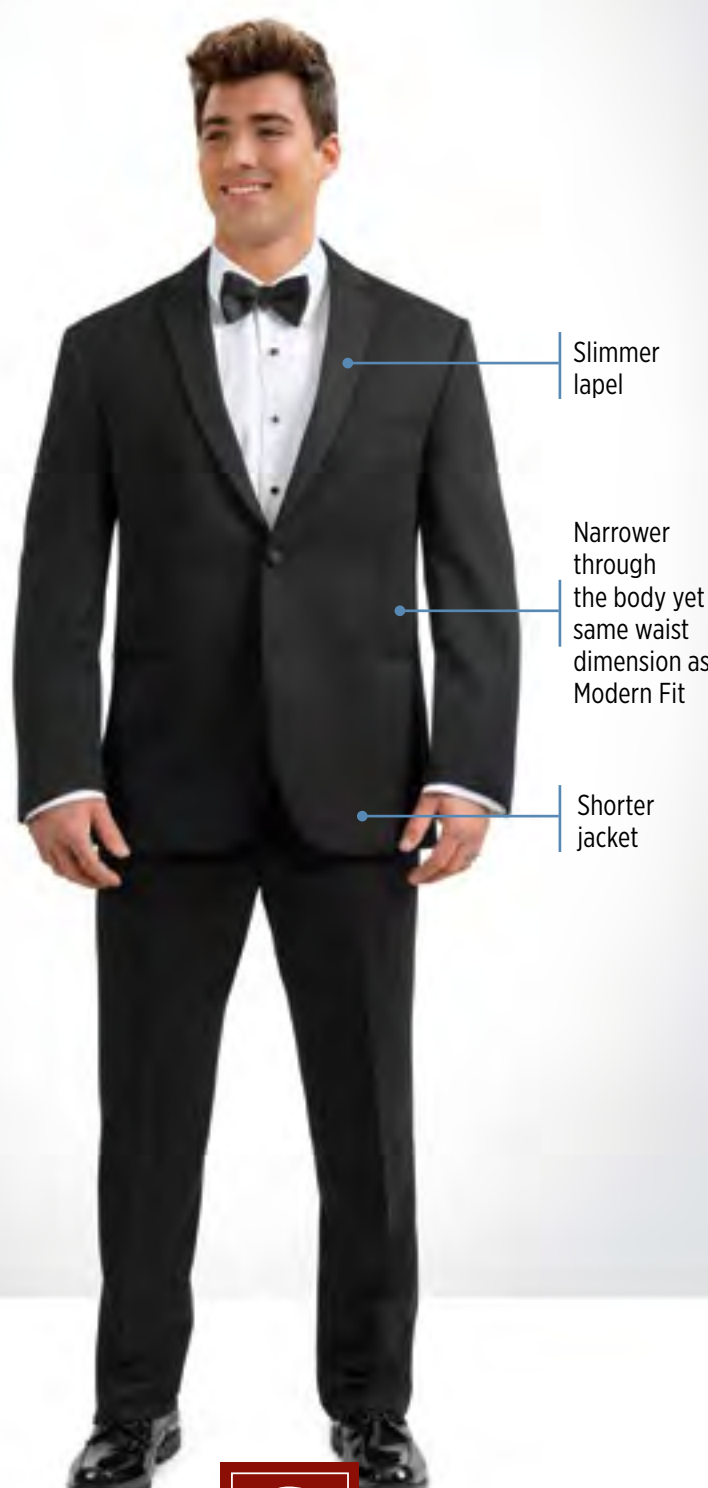
T
Traditional Fit

A classic, fuller cut tuxedo.



M
Modern Fit

Fashion-forward styling with a flattering silhouette.



S
Slim Fit

Contemporary styling with a slimming appearance.



U
Ultra Slim Fit

Trim and tapered styling, fits close to the body.

About the Different Fits:

Any gentleman - including Big and Tall - can wear any of the fits! All of our styles work well with all body types. The only difference between the fits is the tuxedo or suit's silhouette.

About the Different Fits:

Any gentleman - including Big and Tall - can wear any of the fits! All of our styles work well with all body types. The only difference between the fits is the tuxedo or suit's silhouette.

PANT FITS DEFINED



Flat Front Pants

Pant Styles:

800*

Modern Slim Fit Pants

Pant Styles:

252+ 362+ 392~ 750* 990•
301* 372~ 472~ 850*
322+ 382+ 650* 930*

Ultra Slim Fit Pants

Pant Styles:

202~ 231~ 302~ 361+ 471~
211+ 251+ 321+ 371~ 921~
221+ 262~ 350~ 391~ 991+

- * pant styles with a beaded stripe
- + pant styles with no stripe
- pant styles with a faille piped leg stripe
- ~ pant styles with no stripe, buttons for suspenders & belt loops

NOTE:
See page 75 for information about Pant Breaks

PANT FITS DEFINED

Every detail of your ensemble is important, including the break in your pants. Use this guide to help you achieve your preferred look.



Full Break

Deduct 0"

from the outseam measurement to achieve this break

Recommended Pant Styles:
Modern Slim, Flat Front



Half Break

Deduct 1"

from the outseam measurement to achieve this break

Recommended Pant Styles:
Modern Slim, Flat Front



Quarter Break

Deduct 1.5"

from the outseam measurement to achieve this break

Recommended Pant Styles:
Ultra Slim



No Break

Deduct 2"

from the outseam measurement to achieve this break

Recommended Pant Styles:
Ultra Slim

How To Order:

Refer to the Measuring Techniques on page 76 for instructions to measure a pant outseam. When ordering, deduct the recommended number of inches as shown above from the actual pant outseam measurement to achieve desired break.

NOTE: See page 74 for information about Pant Fits

MEASURING TECHNIQUES

NO LOOSE MEASUREMENTS OR FINGERS UNDER THE MEASURING TAPE

Always record the customer's height & weight, as well as his fit preference (regular or tighter fit)



CHEST

Ask the customer to move his arms outward. Place the tape under his arms and around the broadest part of his chest. Have the customer lower his arms to his side and relax. **Stand to the side of the customer to ensure the tape is level on both sides. Pull the tape until you feel tension and then record your measurement.**



OVERARM

With the customer's arms at his side, place the tape around the broadest part of the chest and arms. Stand to the side of the customer to ensure the tape is level on both sides. **Pull the tape until you feel tension and then record your measurement.**



NECK

Place tape around neck at the level where the shirt's collar would be buttoned. Add 1" to the measurement for the correct neck size. In the example above, a 15.5" neck measurement was taken, so a 16.5" neck size would be recorded.



HIP

Ask the customer to remove any items from his pockets. Stand to the side of the customer and place the tape around the broadest part of his hip and rear. **Pull the tape until you feel tension and record your measurement.**



OUTSEAM

Ask the customer to **REMOVE HIS SHOES** and look straight ahead during the measurement process. Start the tape measure level with the top of the waistband at the back of his pant and stretch the tape to the floor (with the customer's shoes off). Adjust and record the customer's outseam measurement. **Subtract 1" from the measurement if there is no pant break preference.**



PANT WAIST

Place the tape around customer's waist at the level he wears his pants, preferably an inch below his navel. **Pull the tape until you feel tension and record your measurement.**

The customer's hip measurement minus 6 inches informs us that they cannot wear a waist smaller than that number. **Example: 40" hip minus 6" = 34" waist; this customer could not wear a 32" waist pant. Record the larger size, 34" pant waist.**



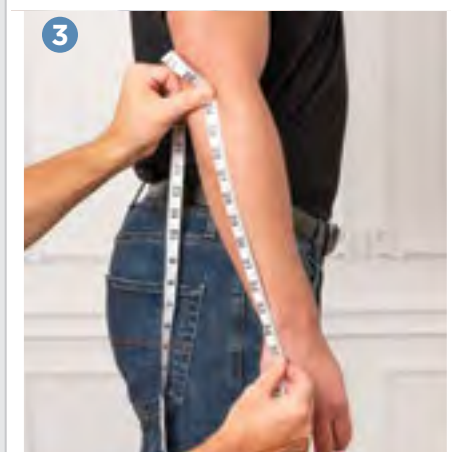
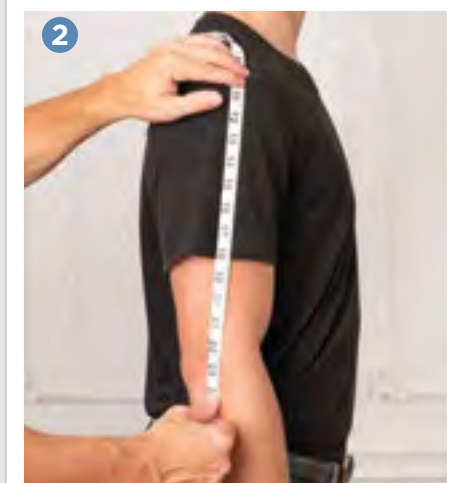
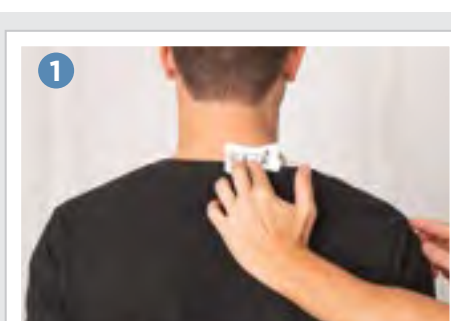
PANT WAIST

When a customer requests to wear his pants below his stomach, **place the tape around his waist, under his stomach. Pull the tape snug on customers with a stomach. RECORD AS THE PANT WAIST MEASUREMENT.**



STOMACH

Place the tape around the widest part of the customer's stomach. **This measurement helps determine the proper shirt and coat size for the customer. DO NOT RECORD AS THE WAIST MEASUREMENT.**



SHIRT SLEEVE

1 Start the tape at the base of the neck centered with the spine. Make sure the tape measure goes over the top of the customer's shoulder. **2** Take the tape down the arm to the point of their elbow **3** and then **measure an inch past the wrist bone.** It is always better to measure long versus short because a sleeve that is too short will likely be unacceptable to your customer.

COAT SIZING GUIDE

Coat	Chest	Overarm	Waist	Hip	Inseam	Outseam	Neck	Sleeve	Height	Weight
34S	32 - 34	41 - 43	26 - 28	32 - 34	< 30.5	< 40.5	14 - 15.5	< 33.5	< 5' 8"	95 - 115
35S	33 - 35	42 - 44	27 - 29	33 - 35	< 30.5	< 40.5	14 - 15.5	< 33.5	< 5' 8"	105 - 125
36S	34 - 36	43 - 45	27 - 30	33 - 36	< 30.5	< 40.5	14 - 15.5	< 33.5	< 5' 8"	115 - 135
37S	35 - 37	44 - 46	28 - 31	34 - 37	< 30.5	< 40.5	14.5 - 15.5	< 33.5	< 5' 8"	125 - 145
38S	36 - 38	45 - 47	29 - 32	35 - 38	< 30.5	< 40.5	14.5 - 15.5	< 33.5	< 5' 8"	135 - 155
39S	37 - 39	46 - 48	30 - 33	36 - 39	< 30.5	< 40.5	15 - 16.5	< 33.5	< 5' 8"	145 - 165
40S	38 - 40	47 - 49	30 - 34	36 - 40	< 30.5	< 40.5	15 - 16.5	< 33.5	< 5' 8"	150 - 170
41S	39 - 41	48 - 50	31 - 35	37 - 41	< 30.5	< 40.5	15.5 - 16.5	< 33.5	< 5' 8"	155 - 175
42S	40 - 42	49 - 51	32 - 36	38 - 42	< 30.5	< 40.5	15.5 - 16.5	< 33.5	< 5' 8"	160 - 180
43S	41 - 43	50 - 52	33 - 37	39 - 43	< 30.5	< 40.5	16 - 17.5	< 33.5	< 5' 8"	170 - 190
44S	42 - 44	51 - 53	34 - 39	40 - 45	< 30.5	< 40.5	16 - 17.5	< 33.5	< 5' 8"	180 - 200
46S	44 - 46	53 - 55	36 - 41	42 - 47	< 30.5	< 40.5	16 - 17.5	< 33.5	< 5' 8"	190 - 215
48S	46 - 48	55 - 57	38 - 44	44 - 50	< 30.5	< 40.5	17 - 18.5	< 33.5	< 5' 8"	200 - 230
50S	48 - 50	57 - 59	40 - 46	46 - 52	< 30.5	< 40.5	17 - 18.5	< 33.5	< 5' 8"	210 - 250
34R	32 - 34	41 - 43	26 - 28	32 - 34	29 - 33	39 - 43	14 - 15.5	34 - 35	5' 8" - 6'	105 - 125
35R	33 - 35	42 - 44	27 - 29	33 - 35	29 - 33	39 - 43	14 - 15.5	34 - 35	5' 8" - 6'	115 - 135
36R	34 - 36	43 - 45	27 - 30	33 - 36	29 - 33	39 - 43	14 - 15.5	34 - 35	5' 8" - 6'	125 - 145
37R	35 - 37	44 - 46	28 - 31	34 - 37	29 - 33	39 - 43	14.5 - 15.5	34 - 35	5' 8" - 6'	130 - 150
38R	36 - 38	45 - 47	29 - 32	35 - 38	29 - 33	39 - 43	14.5 - 15.5	34 - 35	5' 8" - 6'	140 - 160
39R	37 - 39	46 - 48	30 - 33	36 - 39	29 - 33	39 - 43	15 - 16.5	34 - 35	5' 8" - 6'	150 - 170
40R	38 - 40	47 - 49	30 - 34	36 - 40	29 - 33	39 - 43	15 - 16.5	34 - 35	5' 8" - 6'	160 - 180
41R	39 - 41	48 - 50	31 - 35	37 - 41	29 - 33	39 - 43	15.5 - 16.5	34 - 35	5' 8" - 6'	170 - 190
42R	40 - 42	49 - 51	32 - 36	38 - 42	29 - 33	39 - 43	15.5 - 16.5	34 - 35	5' 8" - 6'	175 - 195
43R	41 - 43	50 - 52	33 - 37	39 - 43	29 - 33	39 - 43	16 - 17.5	34 - 35	5' 8" - 6'	185 - 205
44R	42 - 44	51 - 53	34 - 40	40 - 45	29 - 33	39 - 43	16 - 17.5	34 - 35	5' 8" - 6'	195 - 215
46R	44 - 46	53 - 55	36 - 42	42 - 47	29 - 33	39 - 43	16.5 - 17.5	34 - 35	5' 8" - 6'	205 - 225
48R	46 - 48	55 - 57	38 - 44	44 - 50	29 - 33	39 - 43	17 - 18.5	34 - 35	5' 8" - 6'	220 - 240
50R	48 - 50	57 - 59	40 - 47	46 - 53	29 - 33	39 - 43	17 - 18.5	34 - 35	5' 8" - 6'	240 - 260
52R	50 - 52	59 - 61	42 - 49	48 - 54	29 - 33	39 - 43	17 - 18.5	34 - 35	5' 8" - 6'	260 - 275
54R	52 - 54	61 - 63	44 - 51	50 - 56	29 - 33	39 - 43	18 - 19.5	34 - 35	5' 8" - 6'	275 - 290
56R	54 - 56	63 - 65	46 - 53	52 - 58	29 - 33	39 - 43	18 - 20.5	34 - 35	5' 8" - 6'	290 - 300
58R	56 - 58	65 - 67	48 - 55	54 - 60	29 - 33	39 - 43	18 - 20.5	34 - 35	5' 8" - 6'	300 - 310
60R	58 - 60	67 - 69	50 - 57	56 - 62	29 - 33	39 - 43	19 - 22.5	34 - 35	5' 8" - 6'	310 - 330
62R	60 - 62	69 - 71	52 - 59	58 - 64	29 - 33	39 - 43	20 - 22.5	34 - 35	5' 8" - 6'	320 - 340
64R	62 - 64	71 - 73	54 - 61	60 - 66	29 - 33	39 - 43	21 - 24	34 - 35	5' 8" - 6'	340 - 350
66R	64 - 66	73 - 75	56 - 63	62 - 68	29 - 33	39 - 43	23 - 26	34 - 35	5' 8" - 6'	350 - 370
34L	32 - 34	41 - 43	26 - 28	32 - 34	33 - 35.5	43 - 45.5	14 - 15.5	36 - 37	6' - 6' 3"	115 - 135
35L	33 - 35	42 - 44	27 - 29	33 - 35	33 - 35.5	43 - 45.5	14.5 - 15.5	36 - 37	6' - 6' 3"	125 - 145
36L	34 - 36	43 - 45	27 - 30	33 - 36	33 - 35.5	43 - 45.5	14 - 15.5	36 - 37	6' - 6' 3"	135 - 155
37L	35 - 37	44 - 46	28 - 31	34 - 37	33 - 35.5	43 - 45.5	14.5 - 15.5	36 - 37	6' - 6' 3"	140 - 160
38L	36 - 38	45 - 47	29 - 32	35 - 38	33 - 35.5	43 - 45.5	14.5 - 15.5	36 - 37	6' - 6' 3"	150 - 175
39L	37 - 39	46 - 48	30 - 33	36 - 39	33 - 35.5	43 - 45.5	15 - 16.5	36 - 37	6' - 6' 3"	155 - 185
40L	38 - 40	47 - 49	30 - 34	36 - 40	33 - 35.5	43 - 45.5	15 - 16.5	36 - 37	6' - 6' 3"	160 - 185
41L	39 - 41	48 - 50	31 - 35	37 - 41	33 - 35.5	43 - 45.5	15.5 - 16.5	36 - 37	6' - 6' 3"	170 - 190
42L	40 - 42	49 - 51	32 - 36	38 - 42	33 - 35.5	43 - 45.5	15.5 - 16.5	36 - 37	6' - 6' 3"	175 - 200
43L	41 - 43	50 - 52	33 - 37	39 - 43	33 - 35.5	43 - 45.5	16 - 17.5	36 - 37	6' - 6' 3"	185 - 210
44L	42 - 44	51 - 53	34 - 40	40 - 45	33 - 35.5	43 - 45.5	16 - 17.5	36 - 37	6' - 6' 3"	200 - 225
46L	44 - 46	53 - 55	36 - 42	42 - 47	33 - 35.5	43 - 45.5	16.5 - 17.5	36 - 37	6' - 6' 3"	210 - 235
48L	46 - 48	55 - 57	38 - 44	44 - 50	33 - 35.5	43 - 45.5	17 - 18.5	36 - 37	6' - 6' 3"	220 - 245
50L	48 - 50	57 - 59	40 - 47	46 - 52	33 - 35.5	43 - 45.5	17 - 18.5	36 - 37	6' - 6' 3"	240 - 265
52L	50 - 52	59 - 61	42 - 49	48 - 54	33 - 35.5	43 - 45.5	17 - 18.5	36 - 37	6' - 6' 3"	250 - 275
54L	52 - 54	61 - 63	44 - 51	50 - 56	33 - 35.5	43 - 45.5	18 - 19.5	36 - 37	6' - 6' 3"	265 - 290
56L	54 - 56	63 - 65	46 - 53	52 - 58	33 - 35.5	43 - 45.5	18 - 20.5	36 - 37	6' - 6' 3"	280 - 305
58L	56 - 58	65 - 67	48 - 55	54 - 60	33 - 35.5	43 - 45.5	18 - 20.5	36 - 37	6' - 6' 3"	295 - 315
60L	58 - 60	67 - 69	50 - 57	56 - 62	33 - 35.5	43 - 45.5	19 - 22.5	36 - 37	6' - 6' 3"	305 - 330
62L	60 - 62	69 - 71	52 - 59	58 - 64	33 - 35.5	43 - 45.5	20 - 22.5	36 - 37	6' - 6' 3"	315 - 340
64L	62 - 64	71 - 73	54 - 61	60 - 66	33 - 35.5	43 - 45.5	21 - 24	36 - 37	6' - 6' 3"	325 - 350
66L	64 - 66	73 - 75	56 - 63	62 - 68	33 - 35.5	43 - 45.5	23 - 26	36 - 37	6' - 6' 3"	350 - 375
38XL	36 - 38	45 - 47	28 - 32	34 - 38	> 35	> 44	15 - 16.5	> 36	> 6' 3"	155 - 180
39XL	37 - 39	46 - 48	30 - 33	36 - 39	> 35	> 44	15 - 16.5	> 36	> 6' 3"	160 - 185
40XL	38 - 40	47 - 49	30 - 34	36 - 40	> 35	> 44	15 - 16.5	> 36	> 6' 3"	165 - 190
42XL	40 - 42	49 - 51	32 - 36	38 - 42	> 35	> 44	15 - 16.5	> 36	> 6' 3"	180 - 205
44XL	42 - 44	51 - 53	34 - 40	40 - 46	> 35	> 44	16 - 17.5	> 36	> 6' 3"	200 - 230
46XL	44 - 46	53 - 55	36 - 42	42 - 48	> 35	> 44	16.5 - 17.5	> 36	> 6' 3"	215 - 240
48XL	46 - 48	55 - 57	38 - 44	44 - 50	> 35	> 44	17 - 18.5	> 36	> 6' 3"	230 - 270
50XL	48 - 50	57 - 59	40 - 46	46 - 52	> 35	> 44	17 - 18.5	> 36	> 6' 3"	240 - 290
52XL	50 - 52	59 - 61	42 - 48	48 - 54	> 35	> 44	17 - 18.5	> 36	> 6' 3"	250 - 300

short

regular

long

x-long

ADDITIONAL SIZING GUIDES

BOYS' FORMALWEAR MEASUREMENT GUIDE							
Age / Size	Height	Chest	Waist	Inseam	Outseam	Sleeve	Shirt
2	36"	22.5"	17 - 18"	13"	20"	18"	10-10.5" x 20"
3	38"	23"	19 - 20"	15"	22"	19"	10-10.5" x 20"
4	42"	24"	20 - 21"	15.5"	23"	20"	10-10.5" x 20"
5	45"	25"	21 - 22"	16.5"	24"	21"	11-11.5" x 22"
6	48"	25.5"	22 - 23"	18"	25.5"	22"	11-11.5" x 22"
7	50"	26"	23" - 24"	19.5"	27"	23"	11-11.5" x 24"
8	52"	26.5"	24"	21"	29"	24"	11-11.5" x 24"
9	54"	27.5"	24 - 25"	22.5"	31"	25"	12-12.5" x 26"
10	55"	28"	25"	24.5"	33"	26"	12-12.5" x 26"
11	57"	28.5"	25 - 26"	25"	33.5"	27"	12-12.5" x 28"
12	59"	29.5"	26"	26"	35"	28"	12-12.5" x 28"
13	60"	30.5"	26 - 27"	26.5"	35.5"	29"	13-13.5" x 30"
14	62"	31"	26 - 27"	27.5"	36.5"	30"	13-13.5" x 30"
15	63"	31.5"	27 - 28"	28.5"	38"	31"	13-13.5" x 32"
16	64"	32.5"	27 - 28"	29.5"	39"	31"	13-13.5" x 32"
17	65"	33.5"	28 - 29"	30"	39.5"	32"	13-13.5" x 32"
18	67"	34"	28 - 29"	30.5"	40.5"	32"	14-14.5" x 32"

BOYS' HUSKY SIZE GUIDE			
Age / Size	Height	Chest	Waist
8	51"	27.5"	26"
10	54"	28.5"	27"
12	58"	30.5"	28"
14	61"	32"	30"
16	63"	34"	32"

Note: Boys' Husky size coats are normally 1" shorter in the sleeves and 1/2" shorter in the body than a standard boy's size tuxedo jacket.

BOYS' SHIRT SIZE GUIDE			
Shirt Size	Neck	Max. Sleeve	Max. Mid-Section*
X-Small	10" - 10.5"	20"	23"
Small	11" - 11.5"	24"	27"
Medium	12" - 12.5"	28"	31"
Large	13" - 13.5"	32"	35"

***Note:** The Max Mid-Section measurement can be achieved by measuring around the largest part of the gentleman's stomach.

FITTED SHIRT SIZING CHART			
Shirt Size	Neck	Max. Chest	Max. Mid-Section*
Boys' Large	13" - 13.5"	32	29
Small	14" - 14.5"	36	33
Medium	15" - 15.5"	40	37
Large	16" - 16.5"	43	41
X-Large	17" - 17.5"	46	45
2X-Large	18" - 18.5"	50	48
3X-Large	19" - 19.5"	55	52

***Note:** The Max Mid-Section measurement can be achieved by measuring around the largest part of the gentleman's stomach.

REGULAR FIT SHIRT SIZING CHART			
Shirt Size	Neck	Max. Chest	Max. Mid-Section*
Small	14" - 14.5"	39	36
Medium	15" - 15.5"	42	40
Large	16" - 16.5"	45	44
X-Large	17" - 17.5"	49	48
2X-Large	18" - 18.5"	53	51
3X-Large	19" - 19.5"	57	55
4X-Large	20" - 21.5"	61	59
5X-Large	22" - 23.5"	65	63
6X-Large*	24" - 25.5"	69	67
7X-Large*	26" - 27.5"	73	71

Note: When fitting larger size shirts, you must pay close attention to the body size in relation to the neck. Heavy-set people may have a small neck size in proportion to their body. A man that has a 62" chest may have an 18.5" neck, but that shirt would not cover the width of his body.

***Note:** The Max Mid-Section measurement can be achieved by measuring around the largest part of the gentleman's stomach.

ADJUSTABLE PANT WAIST RANGE	
27 - 28 - 29	51 - 52 - 53
30 - 31 - 32	54 - 55 - 56
33 - 34 - 35	57 - 58 - 59
36 - 37 - 38	60 - 61 - 62
39 - 40 - 41	63 - 64 - 65
42 - 43 - 44	66 - 67 - 68
45 - 46 - 47	69 - 70 - 71
48 - 49 - 50	

REVERSIBLE BELT SIZING	
Size	Waist
X-Small	21 - 24
Small	25 - 28
Medium	29 - 32
Large	33 - 36
X-Large	37 - 40
2X-Large	41 - 44
3X-Large	45 - 48

NOVELTY SUSPENDER SIZING CHART	
Coat Size	Suspender Size
2B - 7B	Boys' (B)
8B - 46X	Men's (M)
47L - 60X	Long (L)

MEN'S TOP HAT & FEDORA SIZING		
Size	Circumference	Hat Size
Small	21" - 21 1/2"	6 7/8 - 7
Medium	21 5/8" - 22 1/4"	7 1/8 - 7 1/4
Large	22 1/2" - 23"	7 3/8 - 7 1/2
X-Large	23 1/4" - 23 7/8"	7 5/8

BOYS' FEDORA HAT SIZING	
Size	Circumference
Small	19 1/2" - 20"
Medium	20" - 20 1/2"
Large	20 3/4" - 21"

Coat Size Range	BOYS' BACKLESS VEST			MEN'S FULLBACK VEST													MEN'S BACKLESS VEST
	Small	Medium	Large	Regular Sizes						Long Sizes - 6' 2" and over							
				X-Small	Small	Medium	Large	X-Large	2X-Large	3X-Large	Small	Medium	Large	X-Large	2X-Large	3X-Large	
	3 - 6	7 - 12	14 - 16	188 - 35	36 - 38	39 - 42	43 - 45	46 - 48	50 - 54	56 - 58	36-38	39 - 42	43 - 45	46 - 48	50 - 54	56 - 58	60 - 70
	BS	BM	BL	RXS	RS	RM	RL	RX	R2	R3	LS	LM	LL	LX	L2	L3	SXA



FOR PURCHASE