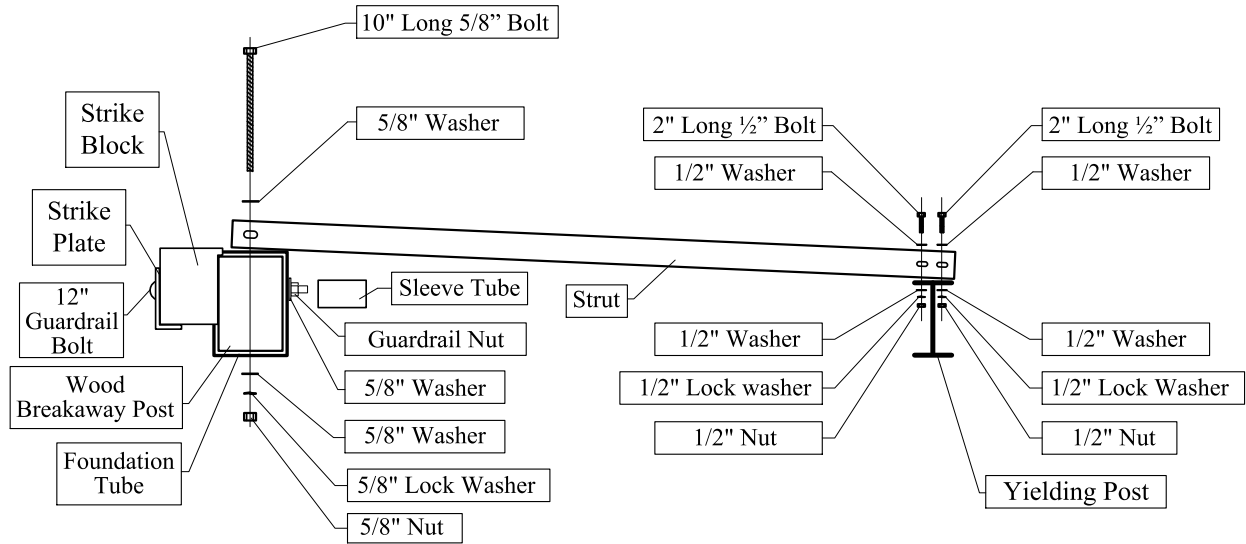
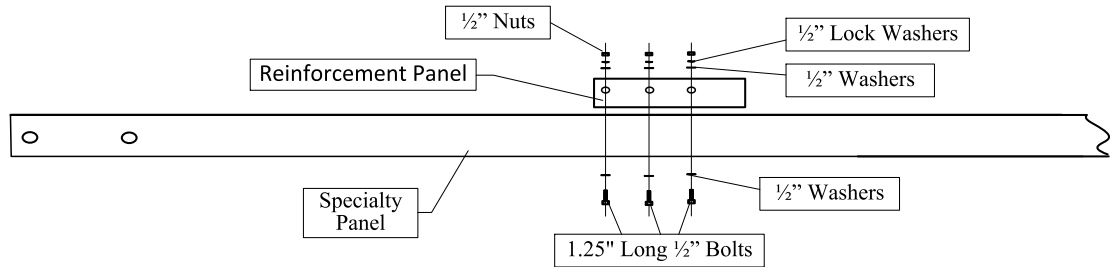


# SGET SYSTEM PARTS



## POST PARTS

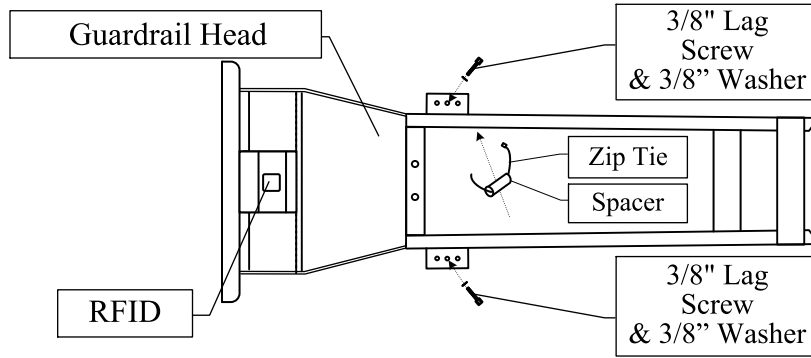
	QTY
12" Guardrail Bolt – 5/8 X 12 307A HDG	1
Strike Plate	1
Strike Block	1
Guardrail Nut – 5/8-11 Nut A563 HDG	1
Wood Breakaway Post – 5-1/2 X 7-1/2 X 50 BCT	1
Foundation Tube – 6" X 8" X 6' Rectangular Tube	1
10" long 5/8" Bolt – 5/8-11 X 10 A325 HDG	1
5/8" Nut – 5/9-11 A563 Hex Nut Galvanized	1
5/8" Washer – 5/8 F436(A325) HDG Flatwasher	3
5/8" Lock Washer Galvanized	1
2" long 1/2" Bolt – 1/2-13 X 2 A325 HDG	2
1/2" Washer – 1/2 F436(A325) HDG Flatwasher	4
1/2" Nut – 1/2-13 A563 Hex Nut Galvanized	2
1/2" Lock Washer Galvanized	2
Yielding Post – Modified W6 X 8.5 Guardrail Post	7
Strut – 3" X 3" X 80" Angle	1
Sleeve Tube – 2-3/8 OD X 4-1/4	1



## SPECIALTY PANEL PARTS

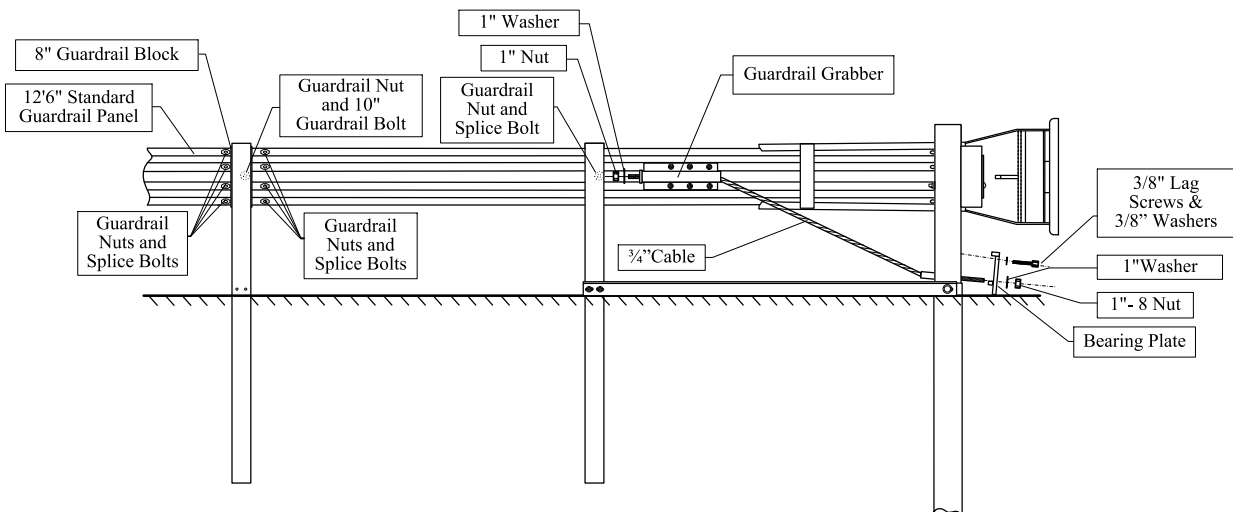
	QTY
Specialty Panel	1
1.25" Long 1/2" Bolt – 1/2-13 X 1-1/4 A325 HDG	6
1/2" Washer – 1/2 F436(A325) HDG Flatwasher	12
1/2" Nut – 1/2-13 A563 Hex Nut Galvanized	6
1/2" Lock Washer Galvanized	6
Reinforcement Plate	1

# SGET SYSTEM PARTS



## GUARDRAIL HEAD PARTS

	QTY
Guardrail Head	1
3/8" Lag Screw – 3/8 X 3 GR5 HDG Hex Lag Screw	2
3/8" Washer Galvanized F844	2
Spacer – 4" Long X 1-1/2 SCH-40 PVC PIPE	1
Zip Tie – 18"-24" Long Rated at 175-200 lbs.	1
RFID chip rated MIL-STD-810F (e.g. Omni-ID EX0750)	1



## RAIL AND CABLE PARTS

	QTY
3/4" Cable – 81" Long BCT Cable	1
1" Nut – 1- 8 Hex Nut UNC Galvanized A563DH	2
1" Washer Galvanized F436	2
Guardrail Splice Bolt – 5/8 X 1-1/4 307A HDG	25
10" Guardrail Bolt – 5/8 X 10 307A HDG	6
Guardrail Nut – 5/8-11 Nut A563 HDG	31
8" Guardrail Block	6
12' 6" Standard Guardrail Panel – W-Beam M-180	3
Bearing Plate	1
3/8" Lag Screw – 3/8 X 3 GR5 HDG Hex Lag Screw	2
3/8" Washer Galvanized F844	2
Guardrail Grabber	1