



BUTLER



**Foundation
Cattle**



FOUNDATION ANIMALS

What should Butler cattle look like? Here are several photos of Butler branded cattle that illustrate what cattle looked like coming out of the Butler herd. To the Butler Breeders Invitational, this is what Butler cattle should look like. They are the standard. As Butler Breeders, our goal is to raise cattle that Mr. Butler would be proud to recognize as his breeding.

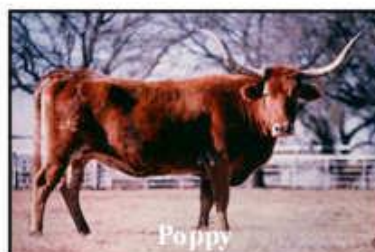
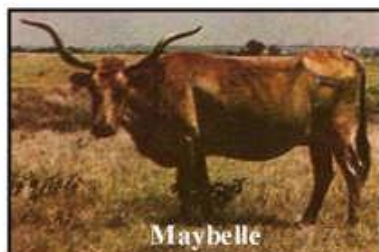
BUTLER BRANDED & FOUNDATION ANIMALS



F.M. GRAVES - BUTLER BRANDED



J. W. ISAACS



HOLMAN



BUTLER COLOR PATTERNS

While longhorn colors and color patterns appear to be unpredictable, there are actually only a few seen in the Butler bloodline. This would have to be true since only a finite number of Butler cattle survived to be propagated. If the phenotypes (in this case, color patterns) of the surviving cattle are known, and their descendants are known, then Butler cattle today can only display color patterns that have been seen before and are repeated. Proof of this is that many rare (and recessive) color patterns seen in Butler foundation cattle are no longer seen because more dominant color patterns have eliminated them. What is seen is a variation on the same pattern. An example would be a lineback pattern that may vary from a partial lineback to a complete lineback or from just a spot on the side to an entire side panel. Blending of patterns is also seen in a lineback with a spot in the face, a white face, a roan face, a mottled face, a lacey face, or a solid face. Historically, all colors were seen in Butler cattle except true black. The photos included here show a few of the rare and distinctive color patterns seen within the Butler bloodline. Color patterns come in variations; so not all examples are identical spot for spot.

RED NECK & SHOULDERS; WHITE SHIELD ON FOREHEAD



Little Emmie



Lucy 5/4



Little Ace Pali Belle



Mt. Union Honey

BLOTCHY RED ON FACE & BODY



Prissy



Duchess Anne 05



Jackie
Lynn
1/866



Ace's Creole Eclair



Princes Anne 04



Danielle 08



Swinging A Freckles

WHITE SPOT ON FOREHEAD; RED BODY



Miss John Wayne



Unnamed FM Graves



Maribeth 867



Miss Graves 11



Bold Droopy

COLOR PATTERNS - PARKER BROWN

Several accounts exist of Milby's unsuccessful attempts to add black to his herd. A very common color found in the Butlers is the Parker brown coloring which in its extreme form is readily called black all the time. The best known true Butlers that are called black were actually born red or brown but will appear almost black by the time they are registered. Over time, few breeders have known or cared about this distinction.

True blacks are born black and true Butlers are not.

EXTREME PARKER BROWN



BLACK FACE, BROWN BODY



BLACK FACE, GRULLA SIDES



BLACK FACE, RED BODY



BLACK FACE, RED SIDES WITH WHITE



COLOR PATTERNS (cont.)

WHITE BLAZE FACE, GRULLA & WHITE BODY



MOTTLED FACE, RED WITH WHITE



FOXTAIL VARIATIONS



COLOR PATTERNS (cont.)

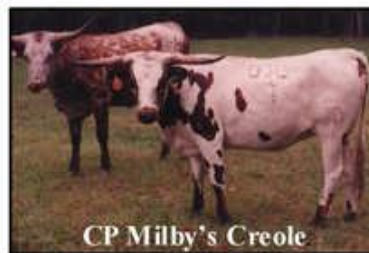
LACE FACE, RED & WHITE SIDES



BULLS



COWS



VARIATIONS

Note the similarity of Man O'War's face to that of J. W. Isaac's Butler bull.



BUTLER CONFORMATION

The conformational traits of the Butler bloodline are unmistakable. To conform to market demands, however, more attention has been paid in recent years to producing Butler cattle with stronger or smoother toplines. Years ago, many more cattle could be seen with deep sway backs, a characteristic trait of true longhorns. While the topline has been smoothed out to make it more eye-appealing to today's buyers, the Butler cattle, regardless of topline, still possess a skeletal structure different from other families. To illustrate this, the photos included here offer examples of Butler bulls and females with extreme sway back conditions. This condition often occurs in very inbred descendants of the Butler and Butler subfamilies gene pool. Also of interest are the distinctive crocodile eye, shape of the skull, and, when visible, a foxtail switch.



He's A Ten

LEPPER



BULLS

Super Butler

MESHELL/RUSSELL



Blue
Horns

MESHELL



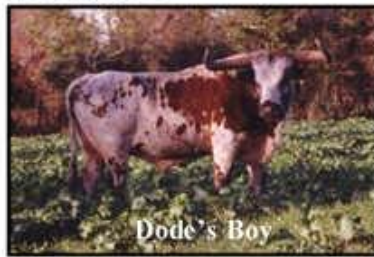
Holman B3

HOLMAN



Ace's
Hunter's
Pride

PARTLOW



Dode's Boy

PARTLOW



Colorado Cowboy

PARTLOW

COWS



Freckle Lady - Bevo daughter

SANDERS



FM Graves 88

GRAVES



Monarch's Starlet

GRAVES



Maribeth 274 "Old Time"

LEPPER



Perfect 10

MESHELL



Melanie "L"

LEPPER

BUTLER HORN SHAPE

Horn shapes or horn growth patterns are very consistent in the Butler bloodline. While some variation does occur, most animals, if they live long enough, end up with the same basic "shape". What does change from individual to individual are the circumference of the base at the hair line, the elevation (i.e., "flat horned" or "high horned" etc.) and the degree of twist.

GROUP 1 - HIGH HORNED



Maribeth 74

LEPPER



FM Graves 89

GRAVES



FM Graves 54

PARTLOW



Princess Butler Girl

WILEY & ESTHER KNIGHT



Constant Comment

PARTLOW

GROUP 2 MORE LATERAL



Majestic

PARTLOW



White Horns 68

MESHELL

GROUP 3 LESS ELEVATION MORE TWIST



Molly "L" (Front) & Becky "L"



Sissy "L"



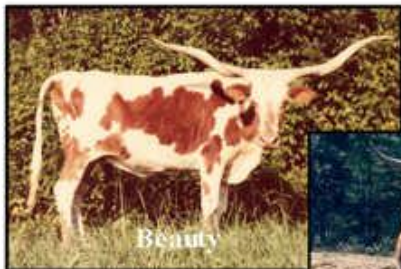
FM Graves 68

BUTLER HORN SHAPE

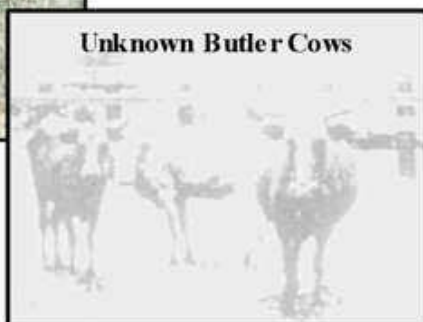
GROUP 4 - LATERAL WITH TWIST



GROUP 5 - LATERAL WITH EXTREME TWIST



GROUP 6 - TEXAS TWIST



GROUP 7 - UNUSUAL

