

The “Magnificent Seven” Revisited

A Celebration of Today’s Longest-Horned Females

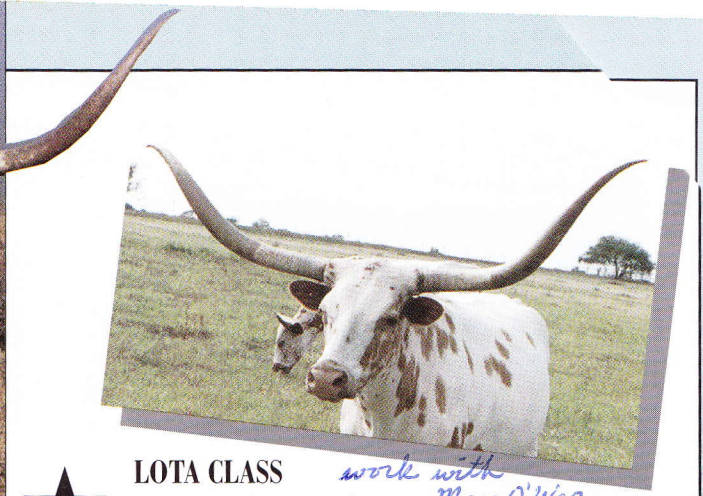
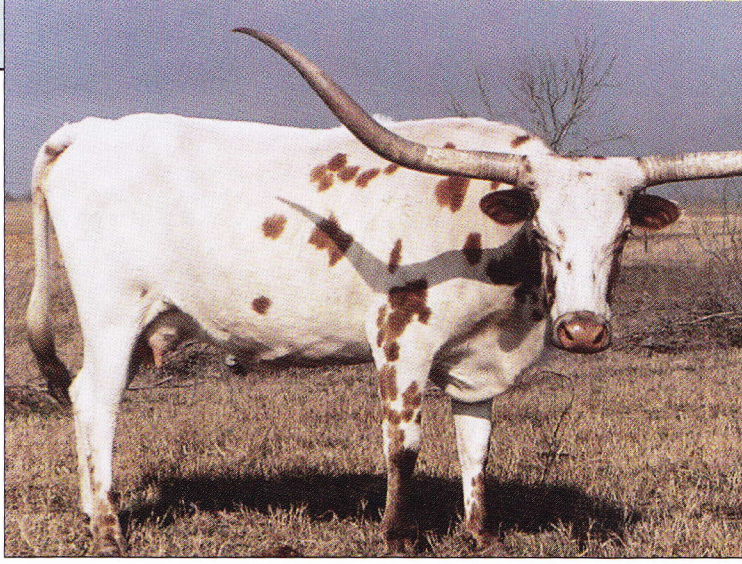


“AN EXPLOSION OF HORN” *by Kaso Kety*

The longest-horned cattle have always been the Texas Longhorn breed’s most celebrated individuals. Long, beautiful horns with characteristic shapes are a sign of purity and one of the breed’s most valuable and marketable traits. Through history, as is true today, the longest-horned cattle in each family have always been considered the best. A good example would be the WR bloodline, self-described as the “true to nature” family of Longhorns. It is no coincidence that the all-time great WR cows—WR 1005, 1052, 1850, 2849 (Measles) and WR 26—have also been the

longest-horned WR females of their respective eras. Of the hundreds of horned cattle breeds, the Texas

Longhorn possesses both head and horn that are unique and are unmistakably characteristic of the breed. No other breed of cattle enjoys the familiarity of the Texas Longhorn—a silhouette or outline of a Longhorn head sparks instant recognition among nearly every self-respecting American. Many visitors to the U.S. schedule a trip to Texas for the primary purpose of seeing “real cowboys and Texas Longhorns” (like Expect A Favorite, the 65”-horned cow shown above). The breed’s horns are its trademark...one which the ladies featured here wear with style. *(continued on page 24)*



1 LOTA CLASS *work with*
HORNS: 70" DOB: 9/23/83 *Mam O'War*
Superior
owned by O'Neil Longhorns, Beeville, Texas



2 STARLIGHT 68 1/2" 5/19/93



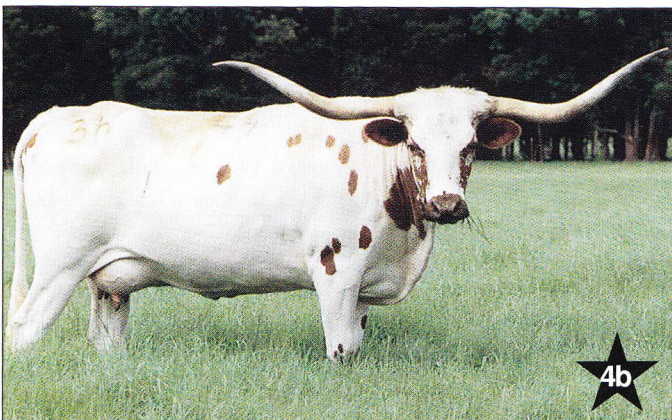
3 DELTA DIAMOND 68" 1/29/80



4a JACKIE LYNN 1/678 67 1/4" 1/10/91



4b JMC TRULY PHENOMENAL 67 1/4" 8/30/86



4b TARI GRAVES 67 1/4" 3/28/92



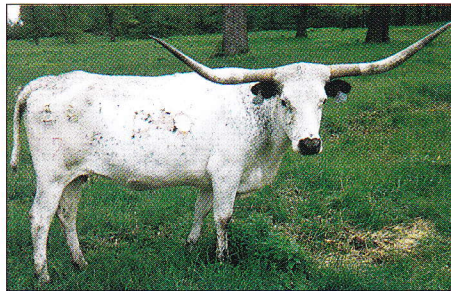
7b MISS DROOPY 67" 4/28/86



DELTA BUNNY 66" 4/7/85



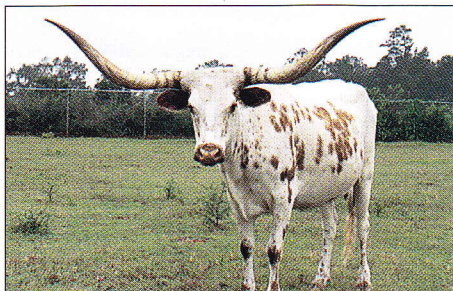
HORSE HEAD STUCK UP 66" 4/14/84



OZARK MOUNTAIN QUEEN 66" 5/20/87



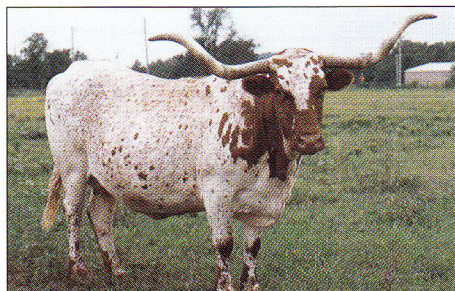
PAM 3/0 66" 4/4/80



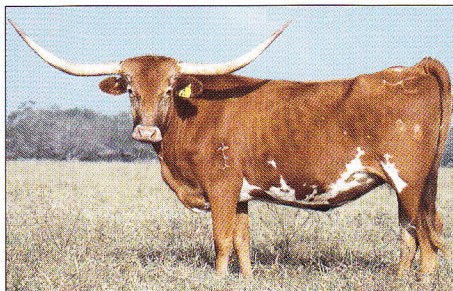
W5 WICHITA CLASS 66" 6/28/89



CREAM PEAS 2/5 65" 3/15/85



DOHERTY 698 65" MARCH 1977



JMC P's GINGER SNAP 66" 2/13/92



L APRIL DAWN 65" 4/15/85

The *Journal's* request seemed simple enough: revisit the question of the "Magnificent Seven." Which are the longest-horned Texas Longhorn cows alive today? In 1985, when the question was first asked it was fairly easy to answer, as the breed's biggest-horned females were well-known and highly promoted. The "Magnificent Seven" was an elite group of cows that boasted horns from 55 to 58 and five-eighths inches tip-to-tip. Fifty inches soon became the goal to be reached. Forty inches, a commendable length not too many years before, became a minimum horn measurement for a marketable Texas Longhorn female. This new standard showed considerable improvement in comparison with the "horn climate" of just a decade earlier.

In 1974, on a motion made by Darol Dickinson, the TLBAA board of directors passed a resolution that would issue, for qualifying cattle, certificates for individuals with over 40 inch tip-to-tip measurements. The national Texas Longhorn registry was only ten years old and, according to Dickinson, "We needed to identify the most outstanding individuals in the breed and their owners." While Dickinson had long realized the market value and demand for the longest-horned and most outstanding overall Longhorn females, the 1974 resolution was the TLBAA's first official act of horn length recognition. The over-40" honor also served to encourage Longhorn producers to, in effect, "breed for horn."

Between the *Journal* staff and myself we knew about many of the breed's longest-horned females, but we agreed that there must be a few that we weren't aware of. Instead of dispatching someone to physically "beat the bushes" in a search for the rest of the 60" club, we felt the only realistic way to cover the territory was to solicit breeder response through the *Journal*. The call went out: "Send us your biggest-horned

cows." We didn't find too many takers with this approach, so we settled for a photo, pedigree and horn measurement on each cow. We then planned on compiling our list of the top seven from those we knew, and depend on some help to fill in the blanks in our list. What happened next was nothing short of amazing. As photos and measurements poured in, our list quickly grew from seven to seventeen, and soon passed seventy magnificent cows of 60" or more. The final list (and there are assuredly a few others hiding out there in the brush) numbers an amazing 114. This is especially stunning when one considers that just eleven years ago there was not a single 60"-horned Texas Longhorn cow in existence.

In scientific terms, for a species with a generation interval as long as that of cattle, and given that genetic progress can only be made one generation at a time, this "explosion of horn" is simply incredible. While an obvious explanation would be that the genetic groundwork for what we are seeing today was laid in the late 1970s and early '80s, one thing is quite clear: Texas Longhorn producers have been breeding for horn with a vengeance. Faced with a herd of magnificent cows, all deserving of some degree of recognition, it was decided—"on the



MF DYNAMITE 65" 5/6/83

fly," as they say—that we would change the focus of the article. Instead of in-depth profiles of a handful of cows (as in the original "Magnificent Seven" by Dr. Mike Settles), we agreed that the more appropriate direction would be to look at the factors behind a phenomenon which we will call simply "the horn explosion."

A concept that is (unfortunately) being ignored by more and more Longhorn producers is that of "horn quality." The important characteristics that determine horn quality in Texas Longhorns are length, shape, base at the skull and horn color. First of all, a Texas Longhorn female at maturity must possess a twist in her horns and, regrettably, the "Texas twist" or corkscrew horn factor is rarer now than ever. Color is related more to rate of growth than desirability, with the darker, denser horns growing more slowly than a red or "clear" horn. Old-timers preferred a "pine knot"-colored horn. Easily seen in older cattle, the horn appears gray-green with streaks of red or orange, particularly near the tips. A myth that black cows don't grow horns was quickly dispelled after producers began to breed for horn in herds possessing the black color gene. In regard to length, shape and base, the general rule is "the more the better." There are several African breeds that have extremely long horns, huge bases and lots of shape. These qualities are quite distinctive and can be identified easily.

Many factors can influence horn growth, but genetics is without a doubt the first and foremost consideration. A cow cannot grow long horns if she doesn't have the genetic potential to do so. Horn growth is a highly heritable trait, but like any trait, if inferior individuals exist in a gene pool, they will remain there. Even if genetic progress is made in this particular gene pool, the genetic makeup that created the inferior cattle will inevitably reappear. It is the removal of these inferior individuals that creates a gene pool that will produce increased horn growth consistently. A look at our roster of huge-horned females reveals an overwhelming dominance by the genetic influence of the Butler bloodline.

The fact that Mr. Milby Butler was "breeding for horn" for over thirty years before the TLBAA introduced its over 40" program makes

his influence on today's Longhorn industry no surprise. While Butler sought to breed the largest-horned animals he could, he was just as firmly committed to maintaining a double twist corkscrew horn growth pattern. An interesting point to note is that while Butler breeding appears in a majority of individuals on the 60" and over list, the number of straight-Butler females, including Lota Class (69 7/8"), competes directly with the "blend genetics" cattle. This is a rare instance where a pure family gene pool can excel at a given trait (in this case horn growth) at a degree comparable to a blended family gene pool that utilizes heterosis as the mechanism for its improvement.

The members of the list that do not contain Butler blood are individuals which contain large percentages of Phillips breeding. While Jack Phillips did use a Butler bull in his herd for several years, his is nevertheless a distinct bloodline. The Butler and Phillips Longhorn families have made the largest genetic contribution to the list, and can be credited with the dramatic rise in horn growth throughout the breed. The modern-day breeder able to produce super-horned females with the greatest combination of consistency and predictability is the late Mr. Johnnie Hoffman. Many cows on our list bear the "Delta" moniker which identifies them as Hoffman-bred. Mr. Johnnie owned members of all the seven families, but recorded his most successful results through a three-way blend of Butler, Phillips and WR blood. Families that are predominant on the list as a base cross are the WR, Yates and Wright bloodlines.

When examining the 60"-and-over list ("The "Magnificent 114" doesn't really roll off the tongue or the word processor, so we'll just refer to our gals as "the list") for common genetic links it becomes obvious that the influence of three cows dominated the group quite impressively. The top honors for the female that made the greatest genetic contributions in terms of horn growth has to be the legendary Beauty. A 1961 vintage straight Butler-bred female, Beauty was in a league of her own even at the time of her death at age 22. She set the standard for horns, possessing a fabulous set with a corkscrew twist that measured right at 60" before being broken. She was considerably (continued on page 34)

UP-AND-COMERS still-growing heifers, ranked by horns per month of age (HMA)



NAME	HORNS	HMA	SIRE	DAM	DOB	OWNER
1. Overjoyed	45" at 14 mos.	3.21"	Zhivago	Overlyn	4/6/95	New Age Cattle Co.
2. Virtual Chill	41.25" at 14 mos.	2.95"	Virtual Reality	Overchill	6/9/95	New Age Cattle Co.
3. Moncie	36.937" at 16 mos.	2.31"	Cast Iron	Range Twister	5/5/95	Bryan Gilvesy
4. Capital Chill	53.5" at 24 mos.	2.23"	Capital Gains	Overchill	4/23/94	New Age Cattle Co.
5. Senator's Choice	40" at 18 mos.	2.22"	Senator	Safari B 1664	3/3/95	Ken Kirkham
6. Jean 501	36" at 18 mos.	2.00"	Ace's Witch Doctor	Jean 206	1/15/95	Scott Clark
7. LCR Buena Joya	57.25" at 30 mos.	1.91"	LCR Texas Legacy	Lucy Creek's Fina Joya	4/24/94	El Coyote Ranch
8. Phenomenal Ghost	55" at 30 mos.	1.83"	Phenomenon	Blow Dry	4/28/95	Jim McKay
9. Texana Rain	49.75" at 29 mos.	1.71"	Zorro FF	Lucy BH29	10/19/93	E.C. "Sonny" Stuart
10. Starlight	66.375" at 39 mos.	1.702"	Diego's Hot Shot	Starlight Celebrity	5/19/93	Joe Keathley
11. Lady Lite	61.25" at 36 mos.	1.701"	JK Sterling 262	S-E Ranger Princess	10/23/93	El Coyote Ranch
12. TNT	58.125" at 36 mos.	1.61"	Superior's Dot	MF Dynamite	4/23/93	Dr. Frank Anderson
13. Queen Overwhelma	47.5" at 30 mos.	1.583"	Overwhelmer	Ozark Mountain Queen	3/6/94	Ken Kirkham
14. Double L Refuge	50.5" at 32 mos.	1.578"	WR 658	Dos Rios Refuge 76/8	5/15/94	Bob Loomis
15. L Special Cherry Berry	62" at 47 mos.	1.32"	Phenomenon	3S Special Lady 589	1/12/93	Gary Walters
16. Overchill	61.75" at 48 mos.	1.29"	Vision Quest	Overlyn	4/20/92	New Age Cattle Co.
17. Carolina Rose	54" at 44 mos.	1.23"	Hardbody	AFJ Mohawk	12/17/92	Doug & Susan Smyth

THE SUPER NINETEEN (65 inches and over)

NAME	HORNS	SIRE	DAM	DOB	OWNER
1. Lota Class	70"	Classic	Leta Boom	9/23/83	O'Neil Longhorns
2. Starlight	68.5	Diego's Hot Shot	Starlight Celebrity	5/19/93	Joe Keathley
3. Delta Diamond* -	68	Monarch 103	Pearl	1/29/80	El Coyote Ranch
4. Jackie Lynn 1/678	67.25	Super Butler	Circle R Brass Belle	1/10/91	Tom Noble
JMC Truly Phenomenal -	67.25	Phenomenon	Measles' SR Miss Kickapoo	8/30/86	El Coyote Ranch
Tari Graves	67.25	Mr. Graves	Texas Tari FM 610	3/28/92	El Coyote Ranch
7. Delta Lynx	67	Monarch 103	Katz Meow	4/14/85	El Coyote Ranch
Miss Droopy	67	Classic	MF Droopy	4/28/86	Ramie Griffin
9. Delta Bunny	66	Monarch 103	Delta Flower	4/7/85	El Coyote Ranch
Horse Head Stuck Up	66	Monarch 103	Horse Head Haughty	4/14/84	C.L. "Lummie" Williams
Ozark Mountain Queen	66	Ozark Ruler	Ozark Lady 34	5/20/87	Ken and Vonnie Kirkham
Pam 3/0	66	Monarch 103	Princess 27	4/4/80	Creek Plantation
13. W5 Wichita Class	65.5	Bebopper	Classic Chance	6/28/89	Jim and Barbara Atwell
14. Cream Peas 2/5	65	Duke Monarch	Ms. Cream Peas	3/15/85	Michael McLeod
Doherty 698 -	65	Senor Mulege	Wright #489	3/1977	Tri-W Longhorns
Expect-A-Favorite -	65	3S Classic Favorite	Joyfull Expectations	2/26/86	El Coyote Ranch
JMC P's Ginger Snap	65	Phenomenon	Majorette	2/13/92	El Coyote Ranch
L April Dawn	65	3S Hondo's Remarkable	B-D Miss Serina	4/15/85	El Coyote Ranch <i>sold</i>
MF Dynamite	65	Bimbo (by Bevo)	Blue Dot 208	5/6/83	DeWitt Meshell

THE REST OF THE BEST (60-64.75 inches)

64" and over

20. Rita II	64.75"	Goliath II	Miss Fairy	4/81	Shady W Ranch <i>sold</i>
21. Delta Brandy	64.5	Dode's Classic	Delta Debutante	2/11/91	Bob Loomis
KM Katie Mae Frantz	64.5	Mr. Prom-Ti	Ms. Diamond Frantz	4/4/88	Jerry Don & Debbie Hester
L-7 Red Cajun Girl	64.5	Aces and Eights	LE Vaca 93	3/7/89	Panther Creek Ranch
24. Measles' Supreme -	64.375	Measles' Super Ranger	Doherty 698	9/10/82	El Coyote Ranch
25. Alameasles	64	Measles' Super Ranger	Superior Ala	6/25/85	Will & Annie Hutchinson
Delta Cordy	64	Rural Delivery	Cordy	7/26/83	El Coyote Ranch
Delta Judy	64	Emperor	Delta Sandy	2/8/91	El Coyote Ranch <i>sold</i>
Delta Love	64	Dode's Classic	Delta Debutante	4/29/97	Bob Loomis
Delta Wilda	64	Emperor	Classic Cashier	2/8/91	El Coyote Ranch
FF 88 Samantha	64	Bold Rose	CP Sammy D	5/17/87	Robert Guenther/Karl Wallace
Gravy's Super Doll -	64	Measles' Super Ranger	FM Graves 104	1/4/84	Stan and Priscilla Briney
JMC Phenomenal Cutie Pie	64	Phenomenon	JVC Impressive Ruth	12/11/88	El Coyote Ranch
Mona Jean	64	Monarch 103	Ms. JW Jean 22/0	1/30/86	Ramie Griffin
Super Dreams	64	Measles' Super Ranger	Knight Dream	3/22/87	El Coyote Ranch
YO Bold Sensation	64	Bold Ruler	Bold GG	4/23/84	Panther Creek Ranch

63" and over

36. Soapweed	63.75"	Play Boy	Tumbleweed	3/15/84	Jim and Jane Shurtleff
37. Twist 21* -	63.5	WR 2386	Miss Twist #1	1972	Crockett Leyendecker
38. Anita* -	63.375	Pappy "L"	Dollie Stark	1/2/78	Panther Creek Ranch
39. Miss Redmac 256	63.25	Classic	Graves 68	9/11/80	Dr. Frank Anderson
40. Bold Sand	63	Bold Ruler	Sandhill 63	4/25/82	Shady W Ranch <i>sold</i>
Cherry 803	63	Dixie Hunter	Luking	5/12/88	Chris Jones
Classy Calico FM 183	63	Classic	FM Graves 134	5/21/79	Shady W Ranch
CP Measles Flower	63	Mr. Measles	CP Yates Cactus Flower	8/2/83	El Coyote Ranch
Cynthia Ann	63	Imperator	Cassy	6/18/82	Bobby & Suzie Floyd
Delta Countess	63	Dixie Hunter	3S Lady Red	6/21/84	El Coyote Ranch
Delta Darlene	63	Dixie Hunter	Dawna Ranger	2/29/88	El Coyote Ranch
Delta Rebecca	63	Emperor	Delta Charlene	2/5/92	El Coyote Ranch
Monarch's Chastity	63	Monarch 103	MF White Horns 185	5/11/85	Kaso Kety
Tanglewood	63	Classic	Snort	1980	Margot Burrell/Henry Stearns
Tar Baby's D Lite -	63	Measles' Super Ranger	Archer 87 "Tar Baby"	12/12/84	El Coyote Ranch
Thunder's 170 D -	63	Classic's Thunder	Miss Redmac 170	11/20/84	El Coyote Ranch

62" and over

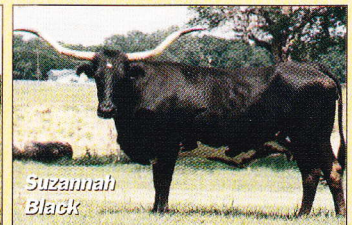
52. Plum Jelly 838/T -	62.75"	Dixie Hunter	FM Graves 102	5/12/85	Kaso Kety
53. Deigo's Ebony	62.5	Blackwood's Deigo	Moore's Maiden 475	9/15/92	Jim and Barbara Atwell
KO Classic's Miss Wright -	62.5	Classic	Wright #489	4/27/80	Shady W Ranch
Maribeth 853	62.5	Super Butler	Maribeth 380	1988	Ben and Ann Gravett
Miss ABA A44	62.5	Husker 212	Olympic Misty	4/9/84	Tom and Susan Brown
Okie Fine -	62.5	Texas Ranger JP	Less Than Legal	1985	Tri-W Longhorns
58. Doherty's Ruler -	62.25	Bold Ruler	Doherty 698	1983	Robert and Kim Richey
59. Doherty 174 -	62.125	One Hundred Plus	Doherty 698	3/31/81	Panther Creek Ranch
60. Dispatch Ruler D	62	Classic Dispatcher	Doherty's Ruler	6/9/86	Dr. Frank Anderson
HTJ Perfect 10 Again	62	Monarch 103	Perfect 10	1/12/85	Dr. Frank Anderson
Miss Redmac 728T	62	Classic	YO Marquis Linda	7/22/84	Dr. Frank Anderson

NAME	HORNS	SIRE	DAM	DOB	OWNER
Day's Bobbie Sue -	62	Dakota Royal	Safari B 321	2/24/86	El Coyote Ranch <i>sold</i>
Delta Ellie	62	Dixie Ruler	Delta Pearl	3/24/89	El Coyote Ranch
Delta Mona	62	CT Commander	Mona Leta	4/18/82	Shady W Ranch <i>sold</i>
JK Ranger's Cinnamon	62 <i>show HF.</i>	Measles' Super Ranger	Cinnamon Girl	3/8/88	El Coyote Ranch
JMC Phenomenal Charm	62	Phenomenon	JVC Classic P-P	3/21/87	El Coyote Ranch
Lady Mandy -	62	Coates' Quannah Parker	Coates' Kiowa Princess	2/24/82	Tom and Mary Ellen Gordon
Majorette	62	Overwhelmer	Expectation	2/12/85	El Coyote Ranch
Me Oh My Style	62	Dixie Joker	Delta Style	5/16/92	El Coyote Ranch
Overlyn	62	Overwhelmer	King's Lynn	1989	New Age Cattle Co.
Possum Eyes -	62	Bold Ruler	Archer 382	4/4/82	Rex and Shereese Glendenning
Ranger's Bathsheba	62	Texas Ranger JP	Bathsheba Finkelstein	6/6/81	El Coyote Ranch
Safari B 1677	62	Gold Rush	Safari B 1174 "Fantasy"	4/13/88	El Coyote Ranch <i>sold</i>
Superior Quest	62	Superior	Big Quest	1/3/84	El Coyote Ranch
61" and over					
76. Overchill	61.75"	Vision Quest	Overlyn	4/20/92	New Age Cattle Co.
77. Delta Annette	61.625	Emperor	Delta Emerald	3/91	Jim and Barbara Atwell
78. B-D Miss Rosebud -	61.5	B-D Bandera	B-D Miss Patches	4/5/86	New Age Cattle Co.
<u>KCN Rose's Genesis</u>	61.5	3S Spectacular	<u>3S Bold Dixie Rose</u>	1/18/86	Richard and Ida Yack
Mona Jean TLB 153	61.5	Monarch 103	Ms. JW Jean 22/0	1/17/86	Shady W Ranch <i>sold</i>
Ms Bar M Lin's Yates -	61.5	Texas Lin	Keechi Problem	4/7/84	Panther Creek Ranch
82. <u>Carmon Dode</u>	61.25	Dode's Boy	Classey Carmon	1985	Robert and Kim Richey
<u>Classey Carmon</u>	61.25	Classic	Graves 86	1981	Robert and Kim Richey
Lady Lite	61.25	JK Sterling 262	S-E Ranger Princess	10/23/93	El Coyote Ranch
LCR Buena Joya	61.25	Lucy Creek's Texas Legacy	Lucy Creek's Fina Joya	4/24/94	El Coyote Ranch
- <u>Superior's Black Beauty</u>	61.25	Superior	Droop's Black Gal	1982	Robert and Kim Richey
87. Bold Lady -	61	Bold Ruler	Canyon Lady	3/8/82	Glendenning Farms
Cypress Creek Lady 319	61	Measles' Super Ranger	Sweet Dream	6/24/88	El Coyote Ranch
Delta Disco	61	Emperor	Delta Annabelle	3/21/91	El Coyote Ranch
Delta Roanita	61	Emperor	Texas Roanita FM 497	4/21/92	El Coyote Ranch <i>sold</i>
Delta Sissie	61	Dixie Ruler	Monarch's Charity	4/14/89	El Coyote Ranch
<u>Katz Meow</u> -	61	Classic	Rose Red	2/13/81	Kaso Kety
OR Sandy Texas	61	OR Texas Republic	OR Gene's Sandy Girl	1/20/90	Panther Creek Ranch
Phenomenal Abigail -	61	Phenomenon	JVC Impressive Ruth	1/14/88	Jim and Barbara Atwell
Possum Girl	61	G-Man	Possum Eyes	5/13/92	Glendenning Farms
Tiny Dancer	61	Melmac Blue Classic	IM Samson Marquis	2/28/87	El Coyote Ranch
60" and over					
97. Diego's Pride 21/8	60.5"	Blackwood's Deigo	Moore Longhorn 21/2	5/28/88	Ben and Ann Gravett
Fultz 3F Marquis 66	60.5	YO Marquis Prince 661	3F Little Red 6	1980	Ben and Ann Gravett
Rhinestone Rita -	60.5	Cowcatcher	Ravishing Ruby	10/81	Shady W Ranch
100. TLB 20 -	60.25	Monarch 103	Wichita Gold	5/1/84	Shady W Ranch
101. Ace's Satin Doll	60	Monarch 103	JW's Queen of Spots	4/1/85	El Coyote Ranch <i>sold</i>
Alicia of 83	60	Duke Monarch	Princess 2/7	8/18/83	Kaso Kety
Cinnamon Girl	60	3S Hondo's Remarkable	Anita	6/5/84	El Coyote Ranch
Classy April FM 298	60	Classic	FM 93	4/21/81	Dr. Frank Anderson
Delta Confetti	60	Dode's Classic FM 446	Delta Charlene	4/2/90	El Coyote Ranch
Delta Dawn	60	Emperor	Delta Beauty	1/30/91	El Coyote Ranch
Hattie Bell	60	Duke Monarch	Ms. Cream Peas	10/30/83	Kaso Kety
HCR Classy Rangerette	60	Classic	Ranger's Rounder	4/6/84	El Coyote Ranch <i>sold</i>
Lucky Style	60	Dixie Joker	Delta Darlene	6/28/92	El Coyote Ranch
Miss Quixote Especial -	60	Classic Especial FM 222	Quixote Joan	3/85	Jim and Barbara Atwell
Monarch Dolly FM 337 -	60	Monarch 103	FM Graves 83	3/13/82	Shady W Ranch <i>sold</i>
Ranch Maiden -	60	Ranger's Ranch Hand	Doherty 698		John Garmon
Safari B 1486	60	Galaxy	Safari B 1129	3/16/87	Joe Keathley
Shady Lady	60	Phenomenon	White Linen	8/7/88	Dr. Frank Anderson

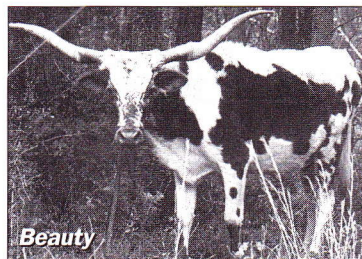
*member of the original "Magnificent Seven"

No "Color Quotas" in the TLJ Equal-Opportunity Program...

The most sought-after (and hardest to come by) individual in the Longhorn business today is the black or black-and-white cow with exceptional horns. The scarcity of this combination makes the black cows on the 60"-and-over list true collector's items. Deigo's Ebony (62.5") and Miss Quixote Especial (60") made the cut, with Suzannah Black (Safari B 977) just missing the cut at 59.5".



The *Journal* is planning a "Big-horned, Black and Beautiful" feature in an upcoming issue, and we'd appreciate your participation. If you have any 55" or over predominantly black cows, please send a color photo and pedigree along with most recent horn measurements to TLJ, P.O. Box 1609, Monument, Colorado 80132.

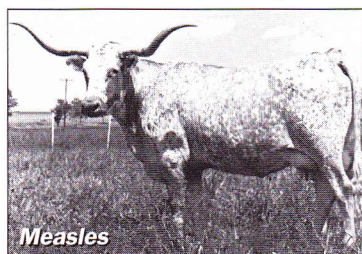


Beauty

better than anything Milby Butler, or the Longhorn breed, for that matter, had seen. There were many outstanding Texas Longhorn females around in her day, but only one Beauty. Her descendants are now displaying the same type of extreme horn growth that separated Beauty

from the other cows of her time. Although she produced many outstanding offspring, for purposes of the list only Classic and Lady Butler (full brother and sister by Bevo out of Beauty) will be discussed here. It is primarily through them that her genetic dominance has been felt. Not only did Classic sire many of the longest-horned cows in Longhorn history including our #1 (Lota Class), but several Classic sons are also listed as sires of 60" and over females. This evidence provides strong support for the notion of heritability of horn growth through the generations.

Lady Butler's influence from the female side is just as complete. She is the dam of both Monarch 103 (the leading sire in terms of number of daughters on the list) and Super Butler, sire of the #3 cow, Jackie Lynn



Measles

1/678. Monarch was sired by Lady Butler's sire Bevo and Super Butler's sire was Superior (a bull that also sired Phenomenon, sire of five females on the list). What is most impressive about these animals in relation to the list is that if their names don't appear on the sire's side,

there's an excellent chance that they can be found on the dam's side.

Another cow that has left her lasting mark on the quest for horn growth is the great Measles. A member of the original "Magnificent Seven," Measles is considered one of the most complete females of all time. A WR-branded cow, she proved to "click" with Texas Ranger JP



Measles Supreme

and, like Beauty, makes her most important contributions through a son (Measles' Super Ranger) and his full sister (Ranger's Measles). Measles' Super Ranger is represented here by seven daughters and Ranger's Measles is the

dam of Emperor, a bull that despite his untimely passing in 1996, could very well join Monarch and Classic as the top sires of big-horned females.

Another highly influential cow is Doherty 698, represented on our list by herself and four daughters. She is also the dam of Phenomenon (by Superior) and Overwhelmer, sire of Emperor. While the Doherty

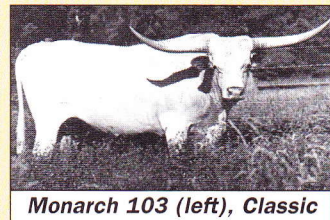


Home of
LOTA CLASS
70" horns tip-to-tip
Out of CLASSIC and LETA BOOM
O'NEIL LONGHORNS
P.O. BOX 788, BEEVILLE, TX 78104
512/358-5451 • 512/358-7913

RANDOM HORN NOTES

DADDY'S GIRLS: WHICH SIRES ARE GETTIN' IT DONE?

The 114 females in the 60-inch club represent a total of 59 different sires, the majority which are currently in service (or are available for service through AI). Here is a breakdown of the top horn sires along with the "top performer" by each sire.



Monarch 103 (left), Classic

SIRE	60" DAUGHTERS	LONGEST-HORNED DAUGHTER
Monarch 103 † •	12	Delta Diamond (68")
Classic †	11	Lota Class (70")
Measles' Super Ranger •	7	Measles Supreme (64.375")
Emperor †	6	Delta Judy, Delta Wilda (64")
Phenomenon •	5	Truly Phenomenal (67.25")
Bold Ruler † •	5	YO Bold Sensation (64")
Dixie Hunter † •	4	Cherry 803, Delta Darlene (63")

†Deceased

FOUR-TIME WINNER

Doherty 698 (shown on page 24) is the top horn-producing dam alive, according to our analysis. The 65" horned "Grandma" is responsible for at least four over-60" daughters—Measles Supreme, 64"; Doherty's Ruler, 62 1/2"; Doherty 174, 62 1/8" and Ranch Maiden, 60") during her illustrious career. This legendary producer (her sons include Overwhelmer, Phenomenon, Dixie Ruler, Wall Street, Doherty's Cowcatcher, Tri-W Ladies' Man and Tri-W 698's Legend) stands alongside the great Measles as the top cows in recent Texas Longhorn history.

MOTHER-DAUGHTER COMBOS

In addition to Doherty 698 and her girls are the following mother-and-daughter initiates in the 60"-and-over sorority:

Measles Supreme (64 3/8") and **Valentine** (65") • **Anita** (63 3/8") and **Cinnamon Girl** (60") • **Doherty's Ruler** (62 1/4") and **Dispatch Ruler D** (62") • **Delta Darlene** (63") and **Lucky Style** (60") • **Possum Eyes** (60") and **Possum Girl** (60 1/2") • **Majorette** (62") and **JMC P's Ginger Snap** (65") • **Overlyn** (62") and **Overchill** (61 3/4") • **Classey Carmon** (61 1/4") and **Carmon Dode** (61 1/4")

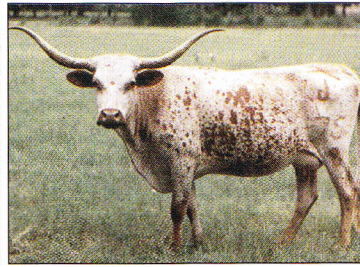
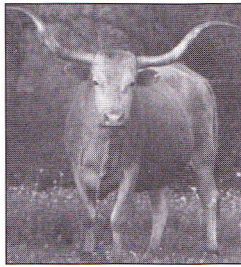
698 family tends to have heads and horns quite different from the other Texas Longhorn families, they have proven to cross exceptionally well with both Butler and Texas Ranger/Measles breeding.

The importance of a horn-producing sire having a dam with outstanding horns cannot be over-emphasized. While nearly all the dams of the listed females can themselves be considered outstanding, each sire mentioned on the list has a dam that ranked among the elite of the breed in her day. From a sire's perspective, several bulls names appear repeatedly. Although the old Butler bull Bevo didn't produce any super-horned daughters himself, he produced sons that certainly have. Bevo's influence through Classic, Monarch (double-bred Bevo), Bimbo and several Classic sons makes the largest impact upon our list of any single sire.

Another bull that competes with Bevo in terms of overall prominence on our list is the straight-Butler bull Superior (Blue Horns x Droop Horn). Superior is represented on the list by two 60" daughters and three sons (Phenomenon, Super Butler and Superior Dot). All of these Superior sons have produced daughters that are not only among the very longest-horned females in existence, but are also among the youngest on the list, competing primarily against much older cows.

Two additional factors which affect horn growth are health and nutrition. These are distinctly different factors that run hand in hand. If a cow is in poor body condition and does not have adequate forage or feed

available, she will be in a stressed condition and consequently not in the best health possible. Simply stated, healthy cattle grow more horn than sick ones and fat cattle grow more horn than poor ones. This is not to say that any one feed source, mineral or vitamin will guarantee extreme horn growth. Overfeeding or underfeeding certain nutrients will tend to cause more harm than good, resulting in cattle which fail to breed or that show nutritional deformities in themselves and in their calves. The best general rule to follow is that the opti-



Two of the three surviving members of the original "Magnificent Seven" are Twist 21 (left) and Anita (right). The third, Delta Diamond, may be seen on page 24.

mum body condition to grow horns equals the optimum body condition for reproduction, based on the age of the cow and the time of year. This is true for breeding or gestation. At any point at which reproductive ability is sacrificed the entire process becomes corrupted.

While factors of health and nutrition have not changed significantly since the original "Magnificent Seven" article, they have

LEADING THE PACK: Owners of 60"-and-over Texas Longhorn Females

Dr. Frank Anderson
ANDERSON RANCH
Bryan, Texas

Ben & Ann Gravett
G & G LONGHORNS
Catlett, Virginia

Stan & Priscilla Briney
LAZY 5B RANCH
Bowie, Texas

Bill and Sue Burton
NEW AGE CATTLE CO.
New Berlin, New York

Parten & Kim Wakefield
SHADY W RANCH
Bryan, Texas

Will & Annie Hutchinson
ARROW A LONGHORNS
Beavercreek, Oregon

Rex & Sherese Glendenning
GLENENNING FARMS
Celina, Texas

Crockett & Dorothy Leyendecker
LEYENDECKER LONGHORNS
Columbus, Texas

Tom Noble
NOBLE LONGHORN RANCH
Shorter, Alabama

Chris Jones
STERLING CATTLE CO.
San Leandro, California

Margot Burrell/Henry Stearns
BURRELL-STEARN'S
Waring/Boerne, Texas

Tom & Mary Ellen Gordon
GLEN OAKS RANCH
Houston/Mtn. Home, Texas

Kaso & Lisa Kety
LITTLE ACE CATTLE CO.
Folsom, Louisiana

Tip and Wes O'Neil
O'NEIL LONGHORNS
Beeville, Texas

Robert Guenther/Karl Wallace
THREE CEDARS RANCH
Oakhurst, Texas

W.S. "Billy" Morris III
CREEK PLANTATION
Martin, South Carolina

Jerry Don & Debbie Hester
JDH LONGHORNS
Kingsville, Texas

Bobby & Suzie Kempton-Floyd
LONE HEIFER RANCH
Tallahassee, Florida

Joe Valentine/Lorinda Beal
PANTHER CREEK RANCH
Aledo, Texas

Wes Hill/Wayne Rumley
TRI-W LONGHORNS
Mounds, Oklahoma

Jim & Jane Shurtleff
DOUBLE J ACRES
Wharton, Texas

Joe and Pat Keathley
KEATHLEY RANCH
Houston, Texas

Bob Loomis
LOOMIS LONGHORNS
Marietta, Oklahoma

Ramie Griffin
ROCKING G RANCH
Beaumont, Texas

Robert & Kim Richey
TRIPLE R RANCH
San Angelo, Texas

Greg Briney, Manager
EL COYOTE RANCH
Kingsville, Texas
JOHN GARMON
Centre, Alabama

Ken and Vonnie Kirkham
KIRKHAM CATTLE CO.
Humansville, Missouri
RICHARD & IDA YACK
Victor, Montana

Michael & Jackie McLeod
MCLEOD RANCH
Edna, Texas
C.L. "LUMMIE" WILLIAMS
Cordele, Georgia

Jim & Barbara Atwell
ROYAL HERITAGE FARM
Grifton, North Carolina

Tom & Susan Brown
TRIPLE RING RANCH
Gettysburg, Pennsylvania

OVERWHELMING PERFORMANCE



OVERLYN, (63 1/2" Horns) shown here with HEADLINER, (61 5/8" Horns) is compiling a tremendous production record, as evidenced by her progeny (below).

Professionally Made Video
'96 Video Pasture Tour
\$9.00 S&H Included

OVERCHILL
(VISION QUEST - OVERLYN)
Calved: 4/20/92
Horns: 61 3/4"
Weight: 1,134 lbs.

OVERJOYED
(ZHIVAGO - OVERLYN)
Calved: 4/6/95
Horns: 45" (at 16 mo.)
Weight: 896 lbs.

CAPITAL CHILL
(CAPITAL GAINS - OVERCHILL)
Calved: 4/23/94
Horns: 53 1/2"
Weight: 1,126 lbs.

VIRTUAL CHILL
(VIRTUAL REALITY - OVERCHILL)
Calved: 6/9/95
Horns: 41 1/4"
(at 14 mo.)

NEW AGE CATTLE COMPANY

BILL & SUE BURTON • 607/847-8835
RD. 3, BOX 227 • NEW BERLIN, NEW YORK 13411


changed considerably since the formation of the first Texas Longhorn registry in 1964. In times gone by, cattle roamed open ranges or large pastures and were rarely pampered or treated for every nick, scrape or snifle (as is routinely done today). A myriad of wormers, vaccines and antibiotics are available for nearly any ailment a cow may encounter during her life. Today more often than not, cattle are run in small pastures or traps where many graze improved pastures year-'round and have their feed brought to them in sacks and bales. Longhorns that are able to enjoy this "resort" lifestyle have little else to do other than reproduce and grow horn. Cattle will grow the most horn when all other bodily needs and functions are satisfied. Cattle that are hustling to make a living (or to simply survive) can't be expected to maintain the same rate of growth displayed by their easy-living counterparts. No matter how easy the lifestyle, genetics are still the limiting factor. This is why cattle of yesteryear that managed to grow tremendous horns in the harshest of conditions were the true wonders of the Texas Longhorn breed.

An additional factor to consider in our analysis of horn growth is the continued increase in overall Texas Longhorn population numbers. There were fewer than 2,500 registered Texas Longhorns in 1964. This number grew to roughly 8,000 in 1974 to the nearly 200,000 registered Texas Longhorns alive today. The Texas Longhorn gene pool has grown at a similar rate due to the amount of genetic blending done over the last 20-30 years. Cattle that predated this period were generally the products of pure families, although these families constantly sought to introduce new and outstand-

ing "outside" blood to their herds. More cattle and an increased gene pool give us many more opportunities to obtain individuals which are superior to the general population.

Given the advancements and/or improvements in the factors we've discussed, cattle should be expected to grow more horn than the generations that preceded them. In the days of the open range and the multi-sire herd, there was no practical way to control matings. Consequently, cattle lacking in a number of areas, horn growth included, were able to flourish. Today, we as breeders have the responsibility to produce cattle that have market acceptability and appeal. This doesn't have to mean 70"-horned cows, but it does mean that serious producers have to keep up with an ever-higher standard of quality. Forty inches is still a respectable horn growth...for two-year-old heifers! Genetic regression isn't tolerated in any breeding program for any trait, and it certainly shouldn't be tolerated in the area of horn growth. Cattle that have no prospects for success in the marketplace have very little use on the ranch.

As we enter the era of the 70"-horned female, we're justified in wondering where this will lead. How much horn can be added without

sacrificing other important traits? At what length are a cow's horns no longer functional? Anyone who has witnessed one of these magnificent animals delicately pluck a horsefly off her tailhead, watched big-horned cattle browse wooded areas or has come between one of these cows and her calf can attest to just how functional these 60-inch "hornaments" can be. 

ABOUT "THE 'MAGNIFICENT SEVEN' REVISITED"

1. All cattle included were alive as of February 1, 1997.
2. This list was compiled to the best of our collective abilities and depended upon breeder/owner participation. Any existing 60" females that do not appear on the list have been omitted either because the author and staff did not know about her/them or because the cow(s) owners did not submit the necessary information for inclusion on the list.
3. This list is based solely upon tip-to-tip horn measurements submitted by the owners of the cattle; the Texas Longhorn Journal makes no claims regarding the accuracy of the measurements listed here. (In other words, *if you don't believe the numbers listed here, go measure the dang cows yourself!*) The volume of this list has made in-person measurements by TLJ staff or the author a logistical impossibility.
4. By the time you read this article the list will already have changed. These measurements was captured at a specific point in time and while Longhorn females will grow horn their entire lives, there is also the possibility of breaking, tipping or wearing down of horns.