

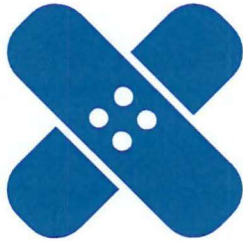


TAB D

Pavement Preservation & Integrated Capital Improvement Programs

Council Introduction
March 14, 2023

New Public Works Programs



Pavement Preservation Program (PPP)

Purpose: maintain existing
roadway surfacing

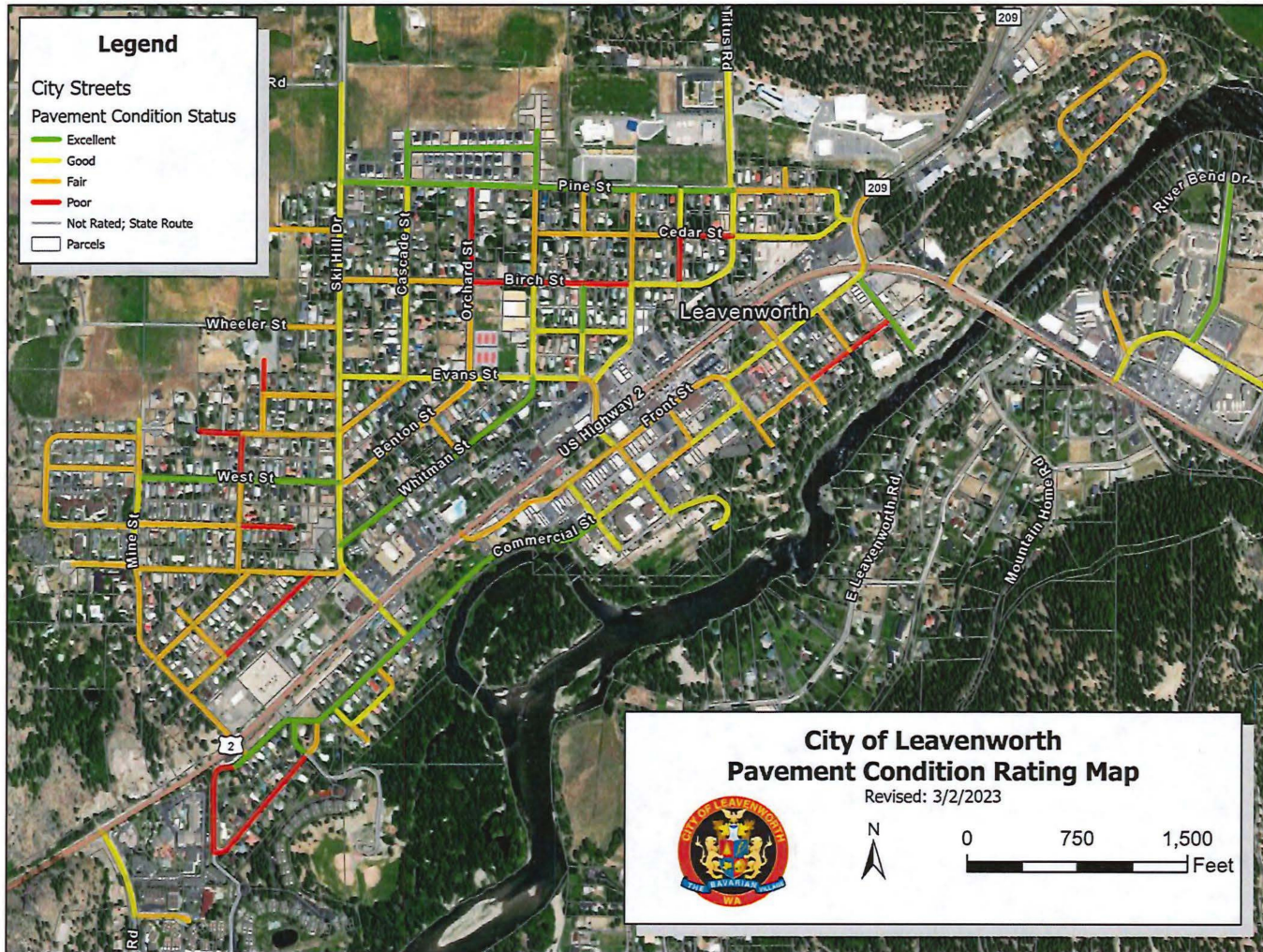


Integrated Capital Improvement Program (ICIP)

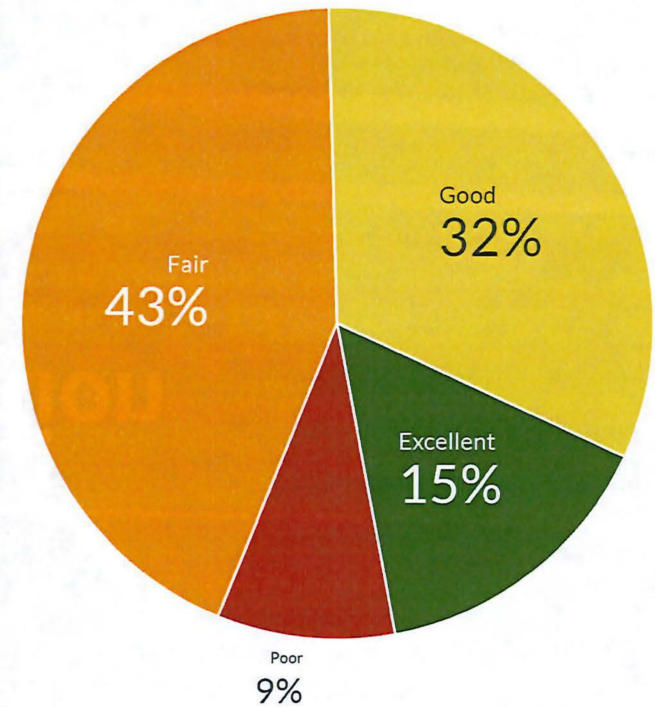
Purpose: replace and improve
infrastructure

A photograph of a paved road with yellow lane markings and a grassy shoulder. The road is dark asphalt with two parallel yellow lines. A white line is visible further up the road. The shoulder is covered in dry, yellowish-brown grass. The background is a flat, green field under a clear sky.

Pavement Preservation Program (PPP)



**City Street Percentage
(by Surface Area)**



Pavement Conditions



Excellent



Good



Fair



Poor

Recommended Preservation

No maintenance required

Recommended Preservation

Crack seal & chip seal

\$

Recommended Preservation

Overlay/chip seal with repair

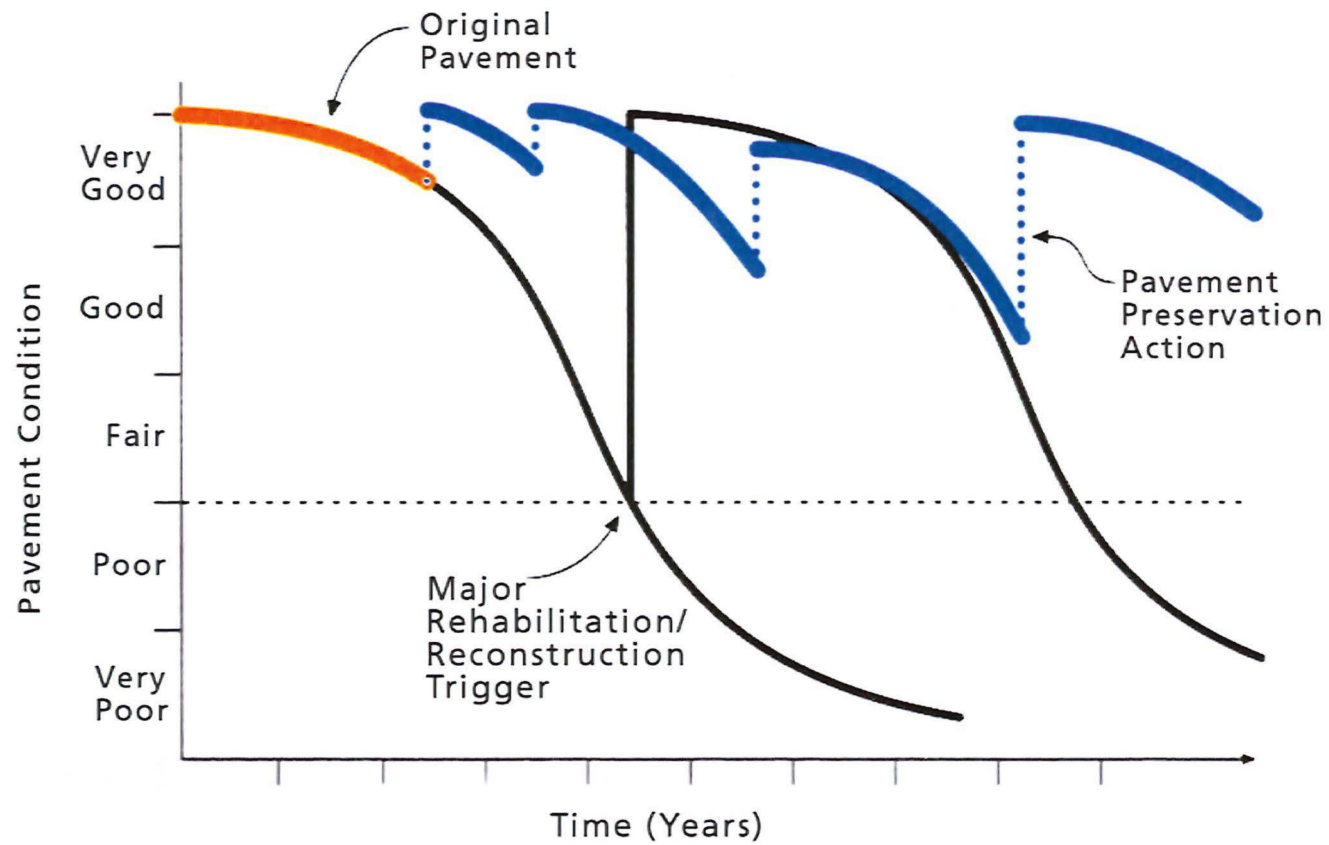
\$\$\$\$

Recommended Preservation

Full roadway reconstruction

\$\$\$\$\$\$\$\$\$\$\$\$\$\$\$\$

Pavement Degradation Over Time



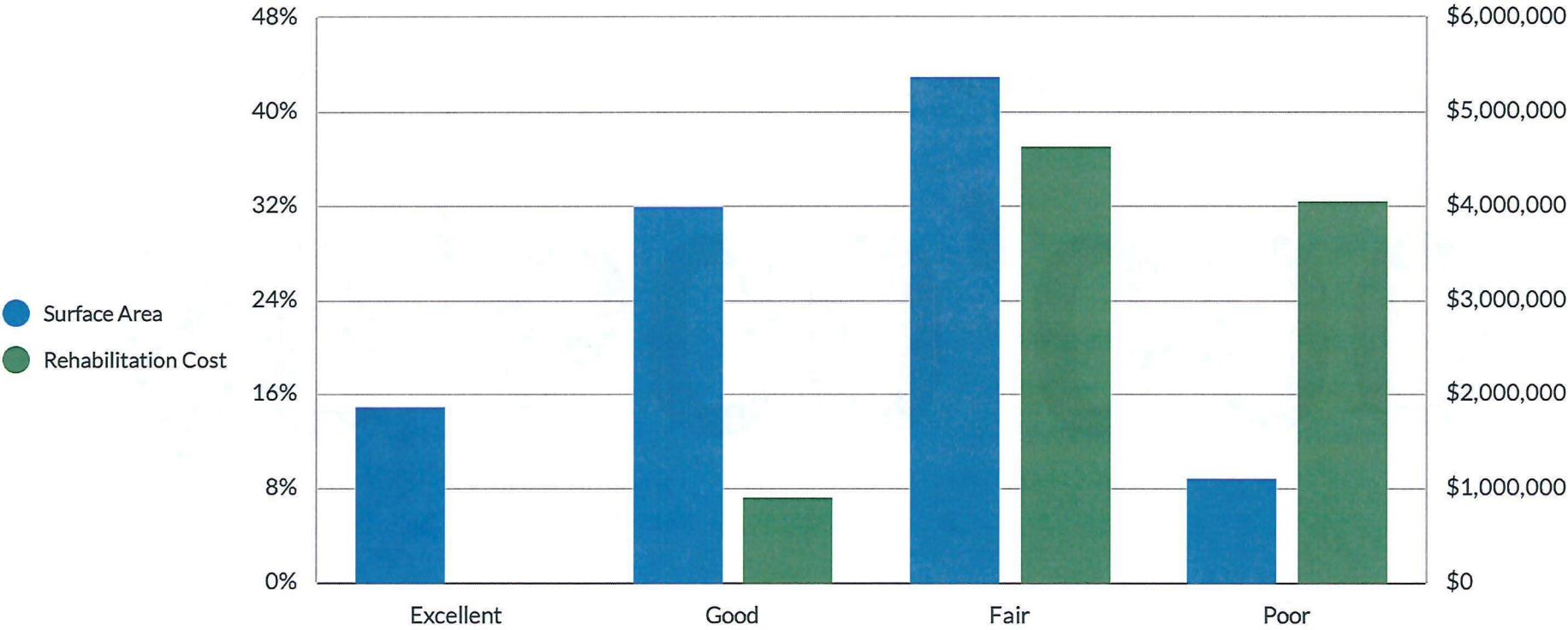
\$9,600,000

City-wide street pavement preservation & rehabilitation total needs

(Alleys not included)

City Pavement Conditions

Pavement Condition Rating



A large yellow CAT excavator is the central focus, positioned on a gravel-covered construction site. Its arm is extended, and its bucket is resting on the ground. To the left, a smaller yellow tracked loader with 'Infrate' branding is visible. The background features a line of trees and several large, cylindrical concrete structures under a sky filled with white and grey clouds. The overall scene depicts an active construction or maintenance project.

Integrated Capital Improvement Program (ICIP)

ICIP Features



Water

Size & Material Matrix

Max. Score = 100



Sewer

Size & Material Matrix

Max. Score = 100



Storm

Size & Material Matrix

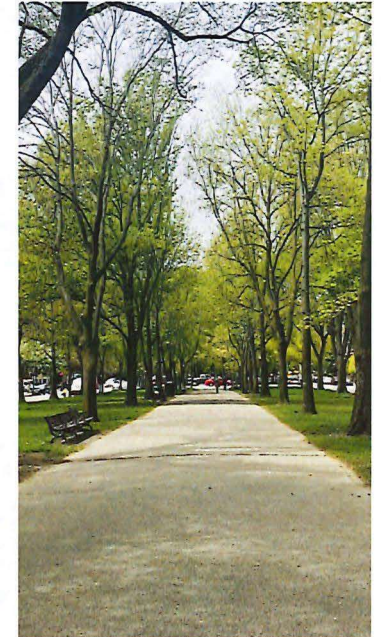
Max. Score = 100



Roadway

Pavement Condition Index

Max. Score = 100



Sidewalk

Presence Index

Max. Score = 100

Example: Orchard Street

Evans Street to Birch Street



Example: Orchard Street

Evans Street to Birch Street



Water

- 4-inch diameter pipe
- Does not meet minimum sizing requirements

Score = 0



Sewer

- 8-inch diameter concrete pipe

Score = 30



Stormwater

- Corrugated metal pipe

Score = 30



Roadway

- Pavement Condition Rating from TIB

Score = 54



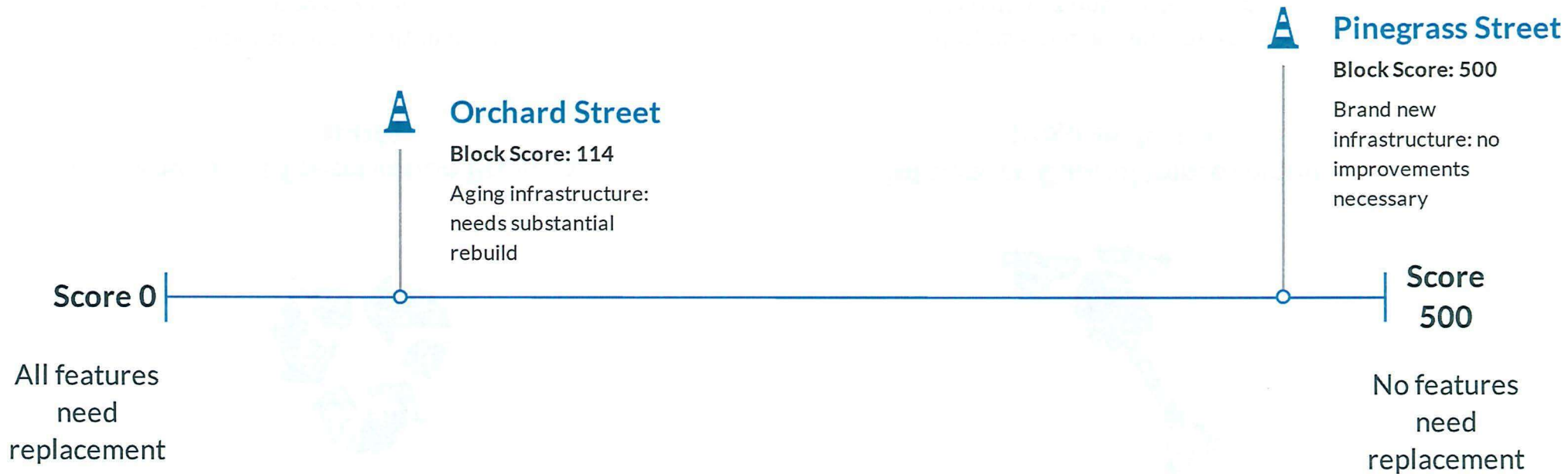
Sidewalk

- No sidewalk exists

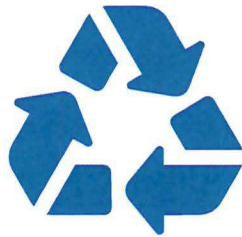
Score = 0

Total Block Score = 114

Block Feature Score



New Public Works Programs



Pavement Preservation Program (PPP)

Purpose: continually maintain existing roadway surfacing, including those streets that have been improved as part of the ICIP program



Integrated Capital Improvement Program (ICIP)

Purpose: replace and improve infrastructure until all features are brought up to City standards