

They were not killed there, even though many books say they were. In fact, they didn't even head out to the west until 1859.

In 1859, Emerson and Mahala crossed the plains with an ox team, and spent the first winter in Honeylake Valley, California. Emerson was engaged in prospecting and mining in California and Nevada for ten years. Emerson and Mahala located land near Horselake Valley, California. They ran a stock ranch for 20 years, and then they sold out the stock and ranch and moved to Oregon.

Benjamin Emerson Shumway died on February 6, 1909 in Logan, Clackamas County, Oregon.

The ***Oregon City Courier***, Friday, February 19, 1909 noted that "Benjamin Emerson Shumway quietly passed away at 6:30 p.m., Saturday, February 6th, at his home on the Norton donation claim, Clackamas County, Oregon at the age of 85 years, 10 months and 2 days."

"He was born at Mattewamkeg, Maine, March 15, 1823, residing in the state of Maine until he was 25 years of age, following the lumber business. In 1848 he went to Minnesota, locating on land near the Falls of St. Anthony on the present site of Minneapolis, was one of the founders of the town of Shockope, [sic] Minn."

"In 1859 he crossed the plains with an ox team, wintering the first winter in Honeylake valley, Cal. He engaged in prospecting and mining in California and Nevada for about ten years. In 1869 he located land in Horselake valley, Lossen [sic] County, California, at which place he conducted a stock ranch for about twenty years, when he sold out stock and ranch, removing to Oregon, where he has resided every [sic] since."



"He was married in St. Paul City, Minn., June 7, 1853, raising a family and three children, two of whom, E. B. Shumway and Mrs. L. Allen, survive, with the wife, Mrs. Mahala Shumway...."

His wife, Mahala Conklin Shumway, died 2 ½ months later on April 30, 1909, also in the city of Logan.



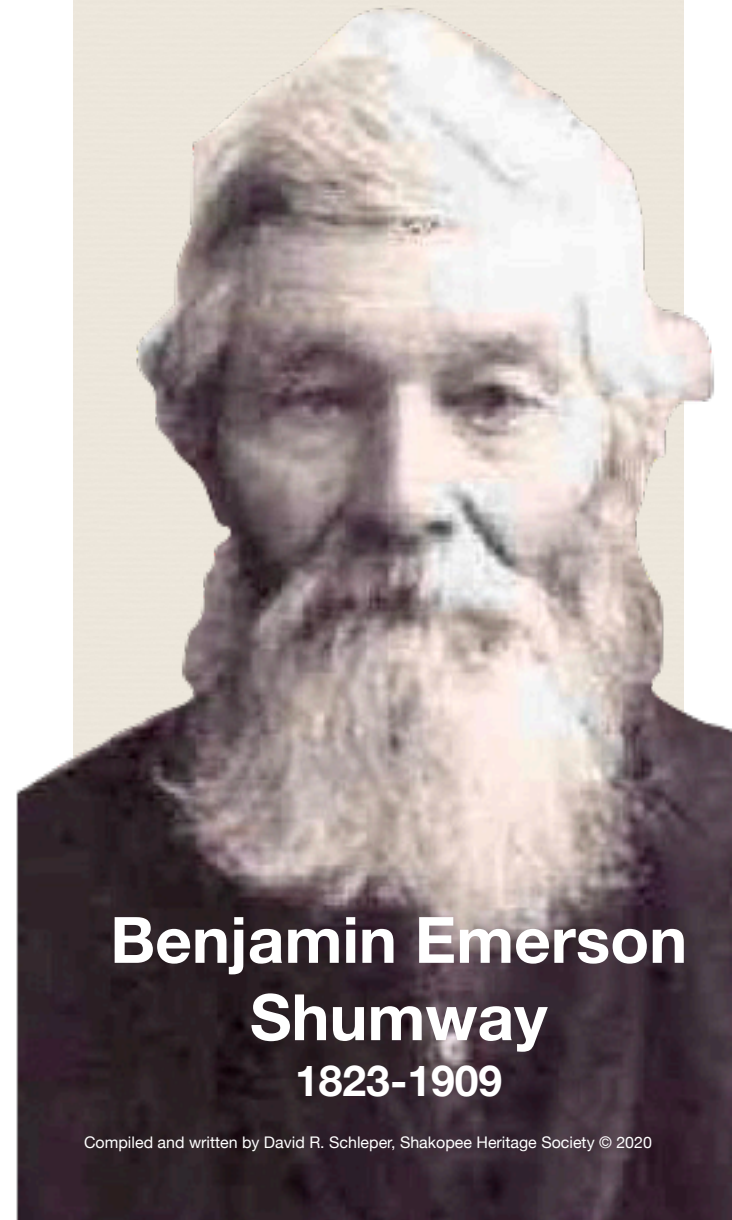
SHAKOPEE HERITAGE SOCIETY
2109 Boulder Pointe, Shakopee, MN 55379

952-693-3865

shakopeeheritage.org



SHAKOPEE HERITAGE SOCIETY



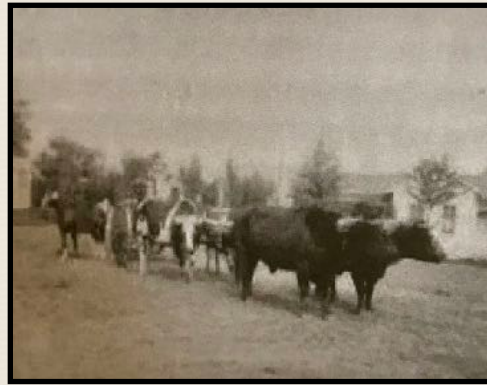
**Benjamin Emerson
Shumway
1823-1909**



Benjamin Emerson Shumway was born March 15, 1823 in Mattawamkeag, Penobscot County, Maine. He resided in Maine for 25 years, working in a lumber business.

In 1848 he moved to Minnesota. In 1850 Emerson's parents, their nine children (included Emerson), and their in-laws and children, all moved to Ramsey in Anoka County. When they first arrived, Emerson's parents both were taken sick with typhoid fever. The nearest physicians were at St. Anthony, and the settlers were skeptical in regard to the qualifications of frontier physicians in general. Because she was a skillful nurse, Emerson's mother directed as best she could the treatment which were given to her own case and that of her stricken husband. They both recovered.

Nathan Shumway, Emerson's brother, build a log cabin. Of course, it was a small cabin, and inadequate for the 8 men and 6 women on one small long house, along with 17 children. Some of the relatives decided to sleep out of doors for the first few nights. Emerson built a house not too far from the river,



Susan on horse, with her parents, Benjamin Emerson Shumway beside oxen, and Mahala Conklin Shumway on the wagon. On right is Mahala and Benjamin Emerson Shumway. Photo about 1890 in Susanville, Lassen, California. Courtesy of McDonald Family Collection, Seattle, Washington.



and John Shumway built on the river bank in front of it, near what was the steamboat landing. Penuel Shumway and his wife had a child on March 22, 1851. That child was Fernando Shumway, and he was the first white child in Anoka County. Unfortunately, Fernando's mother died on July 9, 1851.

By 1851 Emerson Shumway was joining Thomas A. Holmes and friends at the "founding" of Shakopee. After helping building the Holmes Trading Post, Emerson Shumway got sick with smallpox in the fall of 1852. After his recovery, Emerson moved to St. Paul.

Emerson Shumway then married the servant girl of William Holmes, the brother of Thomas A. Holmes, and Susana Shook Holmes, who were early settler in Holmes Mill (later called Jordan, Minnesota.) Her name was Mahala Conklin, who was born June 9, 1835 in Marion County, Ohio. Books by Julius A. Collier on ***The Shakopee Story*** and Reverend Edward D. Neill on ***History of the Minnesota River*** says that Emerson Shumway and Mahala Conklin were married in Scott County, and were the first marriage in the county.

However, they were married in St Paul, Ramsey County, on June 7, 1853.

The Shakopee Story by Julius A. Collier, and the ***History of the Minnesota Valley*** by Reverend Edward D. Neill and an article about Shumway in the December 3, 1909 ***Scott County Argus*** noted that in the fall of 1857, Emerson and Mahala Shumway joined a wagon train to California, and were killed in the Mountain Meadows Massacre.

The Mountain Meadows Massacre was the killing of roughly 120 emigrants who were passing through Southern Utah in September 1857. The massacre occurred on September 11, 1857 in a mountain valley about 35 miles southwest of Cedar City, Utah. The emigrants—men, women, and children—were traveling from Arkansas to California, part of the Baker-Fancher wagon train. They were killed by a group of Mormons with the help of local Paiute Indians.

The Mountain Meadows Massacre was an awful part of history.

The only problem is that Benjamin Emerson Shumway and Mahala Conklin Shumway were never involved.