

Several articles from the **Shakopee Valley News** discuss Betty, the genealogist, who volunteered at the Stan's Museum effort to catalogue the death and marriage records of local residents. Over 650,000 entries, and 120,300 handprinted entries were written on 3x5 cards by Betty and 9 other volunteers who took three years and eight months to make the information available. Some of the articles from the **Shakopee Valley News** include *History at Your Fingertips* by Shannon Fierke, April 24, 2008, *She's the Area's Family Sleuth* by Kristin Holtz, April 30, 2009, *Roots of Family Trees Surface at County Historical Society* by Nicole S. Colson, January 3, 2013, and *Finding Your Family History* by David Schueller.

David Schleper remembered going to the Stan's Museum every Thursday while she volunteered there. The two of them spend hours and hours talking about the history of Shakopee. Over time, Betty willingness to produce over 100 family's ancestry charts, and family group sheets documenting births, marriages, and deaths. But she does not write the family's stories, which is best done by family members. She still loved doing research, and it's fun to come across a black sheep. "Every family has someone they would rather not have, but those people generally make it more interesting," said Betty, grinning.



Betty Anne Schmitt Dols, 91, died peacefully on Monday, November 8, 2021 at St. Gertrude's Nursing Home. After a mass of Christian Burial on November 15, 2022 at St. Mark's Catholic Church, she was buried next to her husband at the Catholic Cemetery in Shakopee.



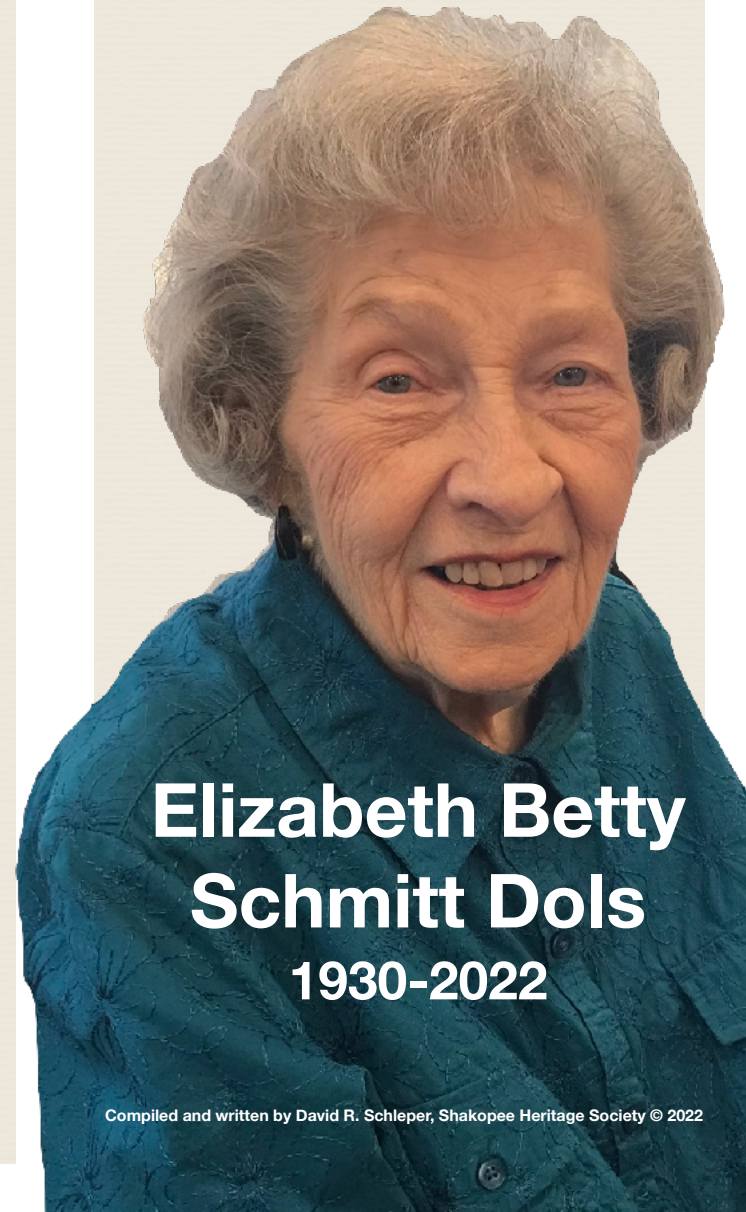
SHAKOPEE HERITAGE SOCIETY
2109 Boulder Pointe, Shakopee, MN 55379

952-693-3865

shakopeeheritage.org



SHAKOPEE HERITAGE SOCIETY



**Elizabeth Betty
Schmitt Dols
1930-2022**

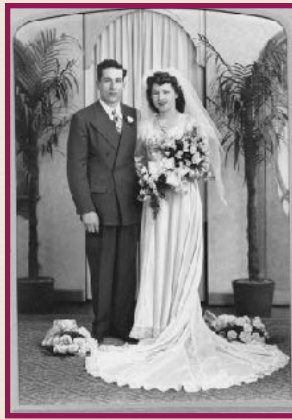


Elizabeth Betty Anne Schmitt was born on January 7, 1930. She was the daughter of Theodore Ted Schmitt (1882-1935), who grew up in Shakopee, and Katheryn Fritz (1887-1972), who grew up in Chaska. Betty was the youngest of 13 children.

Betty's father, Theodore Ted Schmitt, died of silicosis when Betty was five years old. While they were living in a house not far from St. Mark's Church, her mother had to confront the fact that, during the Great Depression, she had 13 children to feed. Her mother rented rooms at the house. And then her mom, Kathryn, went around the town and asked people who had vacant land if Kathryn and her family could plant gardens there. And so, every day, the children had to go around the town to take care of the vegetables in order to survive. From earliest childhood into her late 80's Betty lovingly tended her vegetable and flower gardens, and canned and froze her harvests. No one could stretch a dollar like she could.

Like others of her generation, Betty said that she "learned at an early age, what some people never learn - that if we wanted something out of life, we had to go out there and make it happen. We learned how to be self-sufficient."

Betty also was a devout Catholic and a lifetime member of St. Mark's Catholic Church. But as for school, Betty went to St. Mary's School.



Elizabeth Anne Betty Schmitt married Earl William Dols on June 3, 1947. They spent their years in Shakopee, where Earl worked at Shakopee Ford, and Betty worked at the Mertz-Horeish Insurance Agency in Shakopee for 25 years. After that, Betty was a genealogist and a volunteer at many places in Shakopee, including the Shakopee Heritage Society. She was a founding member of the Shakopee Heritage Society, in 1992.



David Schleper asked her about this, and she explained that at St. Mark's, students had to pay for books. When the St. Mary's School started in 1935, the students did not have to pay for the books, which was important during the Depression. And so Betty, like others, went to St. Mary's for school.

Betty Ann Schmitt married Earl William Dols on June 3, 1947 at St. Mary's Church. Earl William Dols was born January 16, 1919 to Leonard Dols (1873-1957) and Mary Ellert Dols (1878-1955) on their dairy farm 6 miles north of Glencoe, Minnesota. He attended local schools and completed the automotive course and Dunwoody Institute in Minneapolis. He worked at the Ford garage in Glencoe before going into the Army in 1941. He served in the 175th Field Artillery attached to the 34th Infantry Division called the Red Bulls in England, Ireland, Scotland, North Africa, and Italy. At the end of the war in 1945, he came home and worked at Shakopee Ford for the next 35 years. He learned to fly on the G.I. Bill at Flying Cloud Airport and had his own plane with a partner for a time.

The couple had 2 children, Leonard and Linda. When Leonard, her older child, was in college, she went to work for the Mertz Insurance Agency, later called Mertz-Horeish Insurance Agency in Shakopee for 25 years until her retirement in 1990. During that time she achieved licensure as

CPIW and CIC. After she passed her board certification, she taught classes in her spare time to help others achieve certification. She was recognized as Insurance Woman of the Year 1980 by the Insurance Women of Greater Minneapolis, according to the Shakopee Valley News on May 21, 1980.

After her retirement, she began a second career as a professional genealogist. She was President of the Minnesota German Genealogical Society, and traveled to Salt Lake City and Germany to do research. As a lifelong resident of Shakopee, Betty loved her community and volunteered countless hours for many organizations, such as Meals on Wheels, Friends of the Library, Scott County Historical Society and Shakopee Heritage Society. Betty was a proud member of the historic Shakopee Book Lovers Club.

Betty was one of the first founding members of the Shakopee Historical Society in 1992. Later the name of the Society was changed to the Shakopee Heritage Society in order not to be confused with the Scott County Historical Society. For more than a decade Betty worked to build the Shakopee Heritage Society, and she held several offices for multiple terms and brought to the meetings many interested and informative programs.