



INDULGE IN THE ULTIMATE URBAN LIFESTYLE

In the bustling heart of the city lies a new and exclusive residential project that embodies luxury, sophistication, and convenience. These premium 2 and 3 BHK apartments have been meticulously designed to offer the ultimate urban lifestyle, with unparalleled convenience and an unbeatable location. Perfectly situated in the center of it all, this project is the epitome of modern living in the city that never sleeps. If you are looking for a place that combines elegance, comfort, and convenience, then **THE BLISS** is the address you have been waiting for.

RIGHT IN THE HEART OF THE CITY

Located at Ayyappa Society, The Bliss is literally in the heart of the city. A stone's throw away from hitch city and a hop away from everything you need to live a life of convenience.

Some of the local conveniences are:

Hitech City - 6 Minutes

Madhapur Metro Station - 6 Minutes

Durgam Cheruvu Metro Station - 4 Minutes

Meridian School - 4 Minutes

CGR International School - 2 Minutes

Ratnadeep Supermarket - 4 Minutes

Inorbit Mall - 10 Minutes

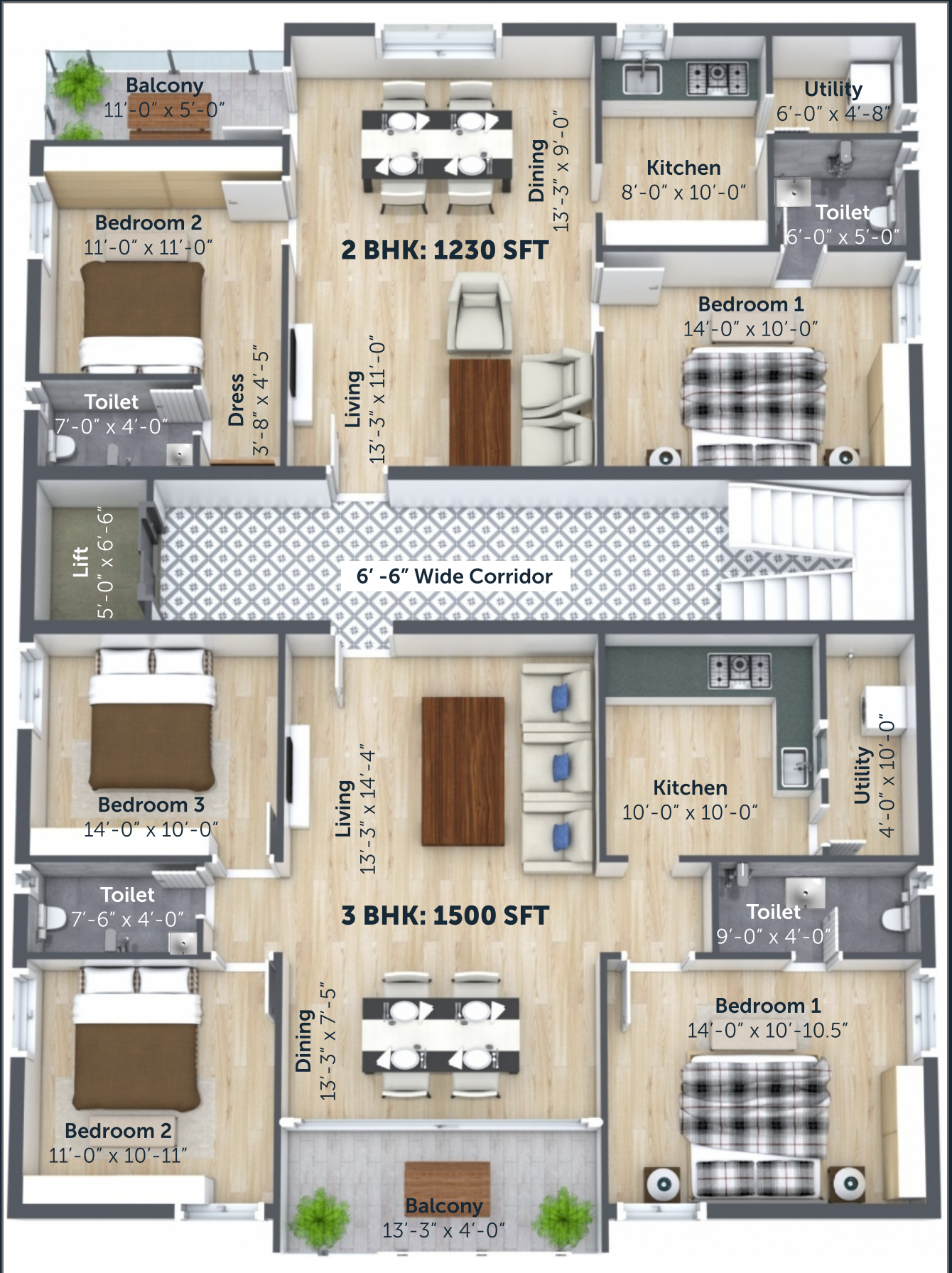
Nexus (Forum Sujana) Mall - 9 Minutes

Yashoda Hospitals - 6 Minutes

AIG Hospitals - 10 Minutes

Hitech City MMTS - 8 Minutes

FLOOR PLAN



SPECIFICATIONS

Structure

RCC framed structure to withstand wind and seismic loads

Walls

6" thick Fly ash/CC Blocks for external walls

4" thick Fly ash/CC Blocks for internal walls

Doors & Windows

Main Doors: **Teak Wood** frame and shutter aesthetically designed, polished and fixed with fixed with reputed make hardware

Internal Doors: Teak frame & flush doors

Windows / French Doors: UPVC sliding windows and French doors with provision for mosquito mesh track

Paints

External: Texture paint with two coats of Acrylic exterior emulsions

Internal Walls & Ceiling: Two coats of Emulsion paint over putty and primer finish

Flooring

Granite flooring for common areas

Living/Dining/Bedrooms & Kitchen: Vitrified tiles of reputed make

Balcony: Anti-skid Porcelain/ceramic tiles of reputed make.

Bath Rooms/Utility: Acid Resistant ceramic tiles of reputed make

SPECIFICATIONS

Bathroom & Sanitary

Bath Rooms: Glazed/Matt finish Ceramic tiles up to door height

Utility and Wash Area: Ceramic tiles dado upto 3'-0" height

Toilets: Premium quality ceramic wash basins of reputed make

Premium quality wall mounted EWC with concealed flush tank of reputed make

Premium quality C.P. fittings of reputed makes

Kitchen

Granite top for kitchen top

Glazed ceramic tiles upto 2 feet for dado

Electrical

Power outlet for geyser and exhaust fan in all bathrooms

Power plug for cooking range, chimney, refrigerator, microwave, mixer / grinder in kitchen

Plug points for T.V. at appropriate locations.

Distribution boards and MCBs of premium make

Modular Electrical Switches of premium make

Power outlets for air-conditioners in living and all bedrooms

Plumbing

PVC/CPVC/UPVC pipes of reputed make

Power Backup

DG backup for common areas and metered select loads for each flat

SPECIFICATIONS

Security

Compound wall around the project.

Parking

Stilt car parking laid with natural stone

Elevator

Branded elevator of reputed make

Others

Provision for internet connection in each unit

Provision for cable connection at appropriate locations

 9609 34 34 34



[Click for Map](#)

A PROJECT BY
PK INFRA