



Hobsons Bay Yacht Club Royal Yacht Club of Victoria

SI – Attachment 1 - Club Courses

Courses generally may be selected from the following -

Courses 1 - 3	RYCV - Wednesday Afternoon, Sunday Morning Courses
Courses 4 - 9	RYCV/HBYC Wednesday Twilights
Courses 10 - 13	HBYC - Sunday Pursuit Courses
Courses 14 - 18	HBYC - Thursday Twilight Pursuit
Courses 19 - 22	Brass Monkey - Divisions 2 and 3
Courses 25 – 32	Brass Monkey - Division 1
Courses 33	HBYC Two-Handed
Courses 34 – 36	HBYC Club Courses
Courses 37 – 40	RYCV Club Courses (draft)

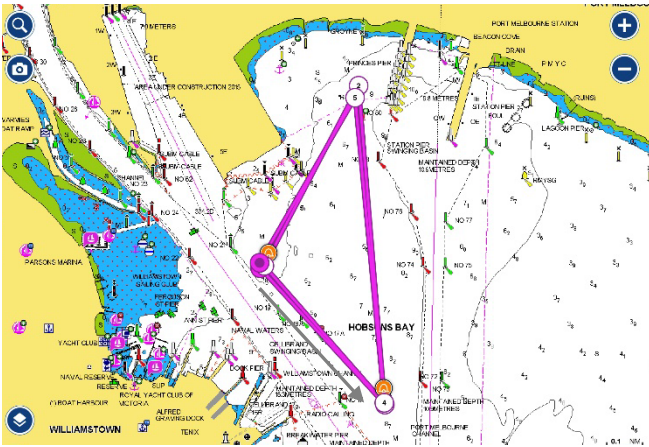
Revisions

8 January 2024 – Courses 15 and 17 revised

4 April 2024 – Courses 27, 28, 29, 30 revised

Course 1 (Pursuit) – Southerly

Distance 7.6 nm

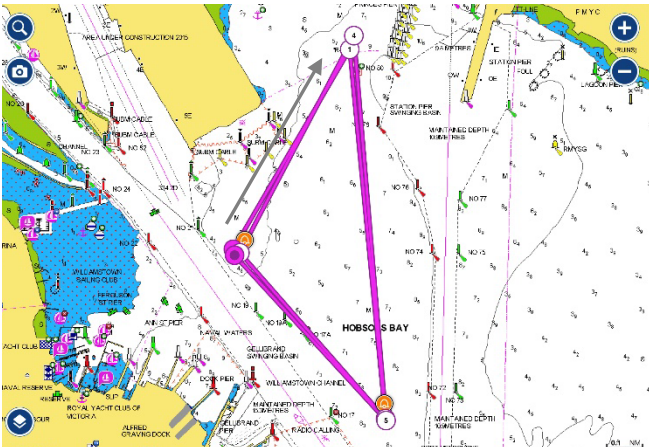


Start/Finish – Near Xray mark.

Start in a South-Easterly direction – V mark to port – R4 to port – Xray to port – V mark to port – R4 to port – Xray to port – V mark to port – R4 to port – finish.

Course 2 (Pursuit) – Northerly

Distance 7.6 nm

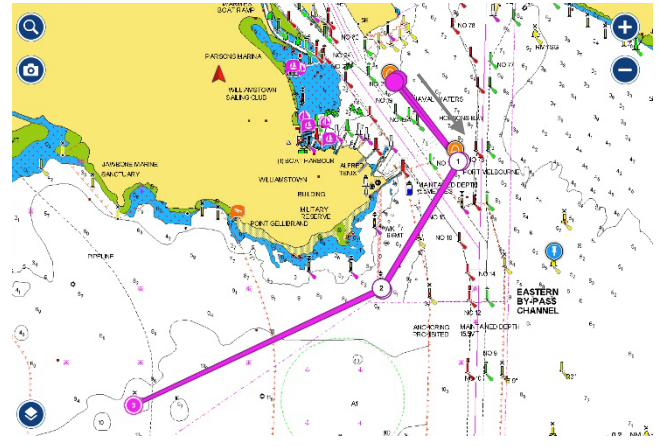


Start/Finish – Near Xray mark.

Start in a North-Easterly direction – R4 to starboard – V mark to starboard – Xray to starboard – R4 to starboard – V mark to starboard – Xray to starboard – R4 to starboard – V mark to starboard – finish.

Course 3 (Pursuit) – East/Westerly

Distance 7.0 nm

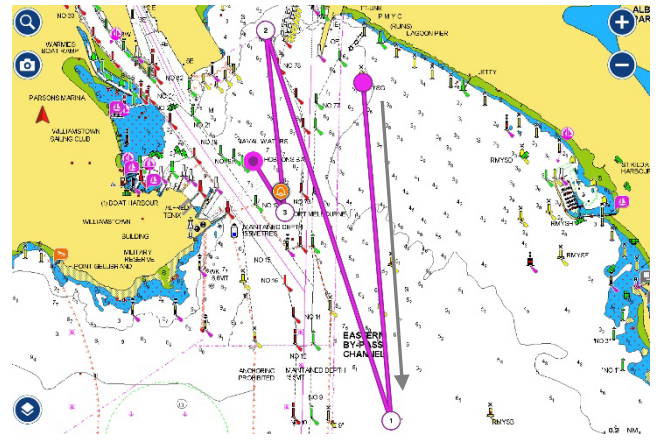


Start/Finish - Near Xray mark.

Start in a South-westerly direction – V mark to starboard - Gellibrand Shoal mark to starboard – P3 to starboard – Gellibrand Shoal mark to port – V mark to port - finish.

Course 4 – Southerly

Distance 6.3 nm



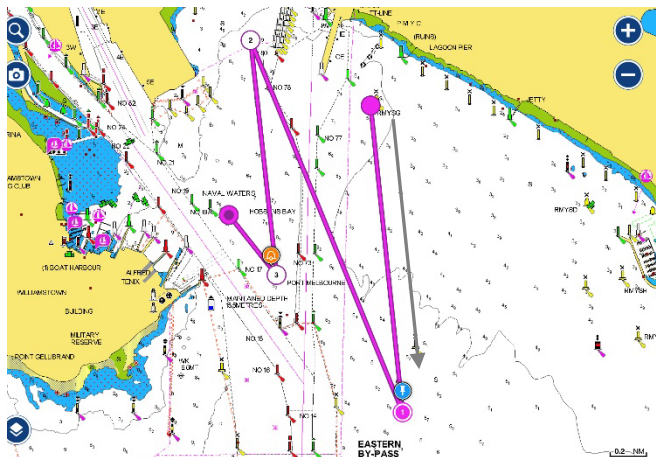
Start - Near RMYS G.

Finish – East Ch 17A

Start in a Southerly direction – east of passing marks Ch 71, T25, T23 - R3 to starboard - east of bounding marks T23, T25, Ch 71 – R4 to port – V mark to starboard – finish.

Course 5 – Southerly

Distance 5.1 nm



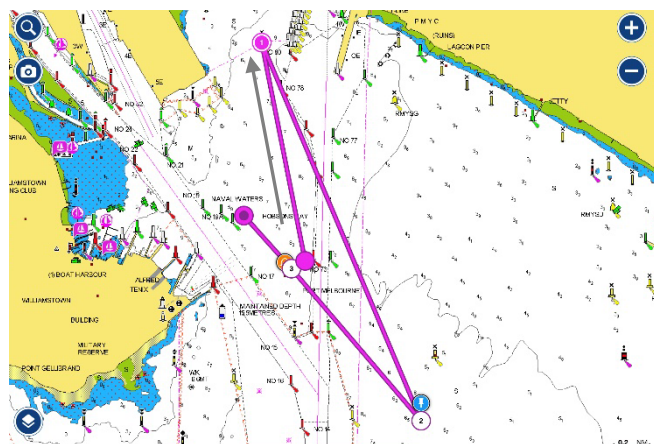
Start - Near RMYS G.

Finish – East Ch 17A

Start in a Southerly direction – east of passing marks Ch 71, T25 – SB3 to starboard - east of bounding marks T25, Ch 71 – R4 to port – V mark to starboard – finish.

Course 7 – Northerly

Distance 4.2 nm



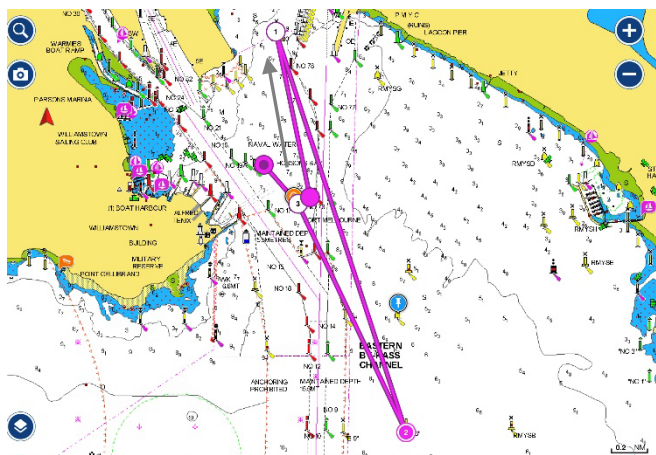
Start – Near Ch 72.

Finish – East Ch 17A

Start in a Northerly direction – R4 to starboard - east of bounding marks Ch 71, T25 – SB3 to starboard – east of Ch 71 - V mark to port – finish.

Course 6 – Northerly

Distance 5.2 nm



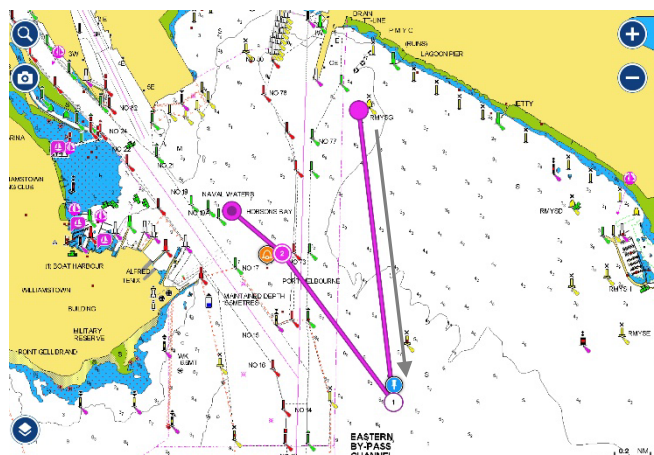
Start – Near Ch 72.

Finish – East Ch 17A

Start in a Northerly direction – R4 to starboard - east of bounding marks Ch 71, T25 – R3 to starboard – east of Ch 71 - V mark to port – finish.

Course 8 – Southerly

Distance 2.6 nm

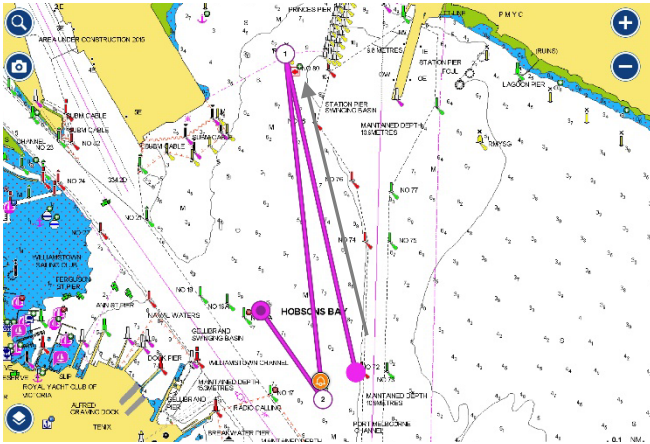


Start – Near RMYS G.

Finish – East Ch 17A

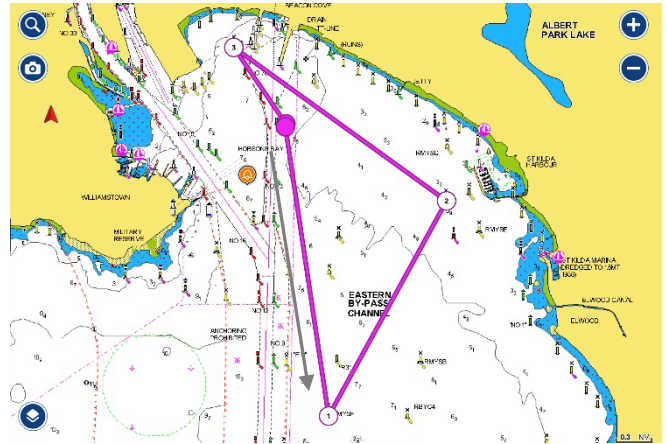
Start in a Southerly direction - east of bounding marks Ch 71, T23, T25 – SB3 to starboard – east of T25, T23, Ch 71 - V mark to port – finish.

Course 9 – Northerly
Distance 2.1 nm



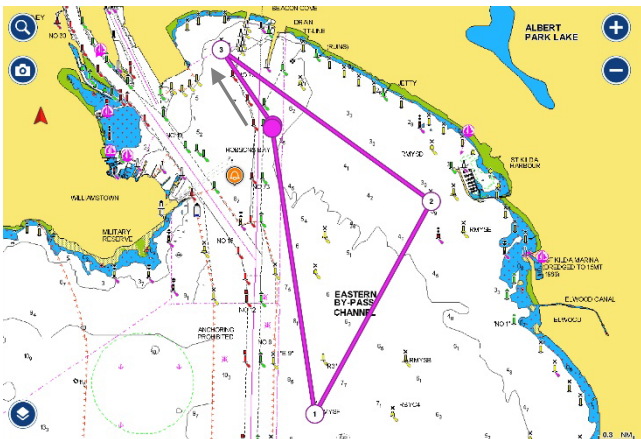
Start – Near Ch 72.
Finish – East Ch 17A
Start in a Northerly direction – R4 to port - V mark to starboard – finish.

Course 11 (Pursuit) – South/South-East
Distance 7.0 nm



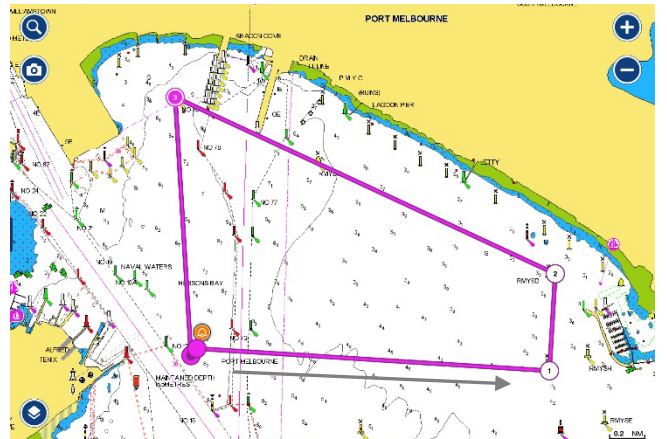
Start/Finish - East of Ch 75.
Start in a Southerly direction - east of bounding marks Ch. 71, 11, 9 and 7 –
RMYS F to port - RMYS A to port - R4 to port - finish.

Course 10 (Pursuit) – Northerly
Distance 7.0 nm



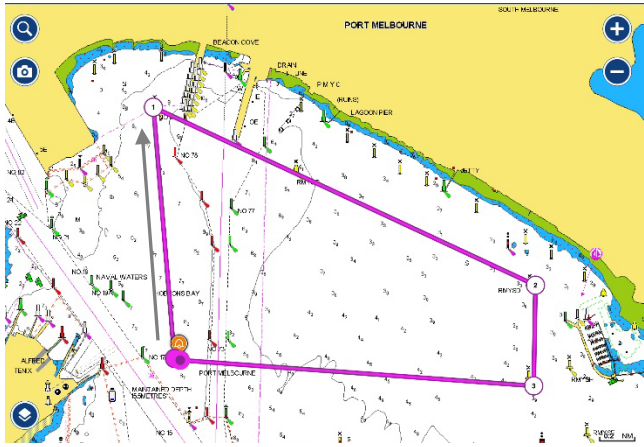
Start/Finish - East of Ch 75.
Start in a North-Westerly direction - R4 to starboard - RMYS A to starboard - RMYS F to starboard, east of bounding marks Ch. 7, 9, 11 and 71 – finish.

Course 12 (Pursuit) – Westerly/Easterly
Distance 5.1 nm



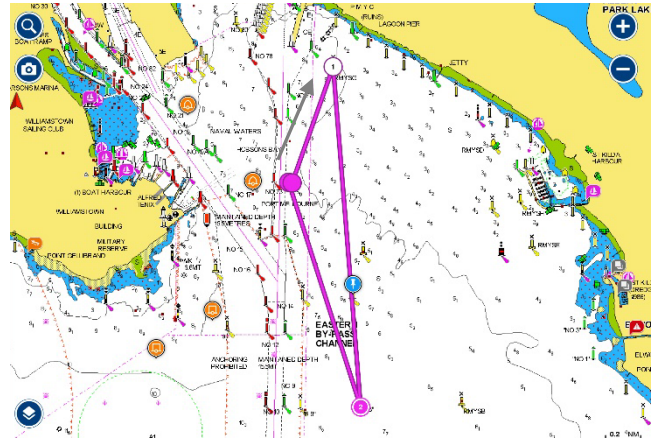
Start/Finish - Near V mark.
Start in an Easterly direction – RMYS A to port - RMYS D to port – R4 to port - finish.

Course 13 (Pursuit) – Northerly
Distance 5.1 nm



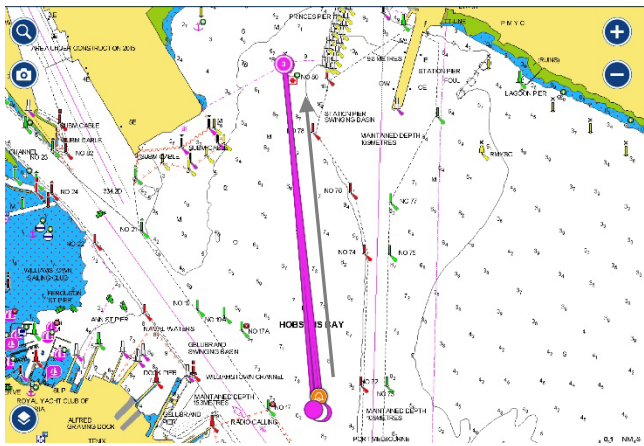
Start/Finish - Near V mark.
Start in a Northerly direction - R4 to starboard - RMYS D to starboard - RMYS A to starboard, east of – finish.

Course 15 (Pursuit) – Northerly
Distance 4.6 nm



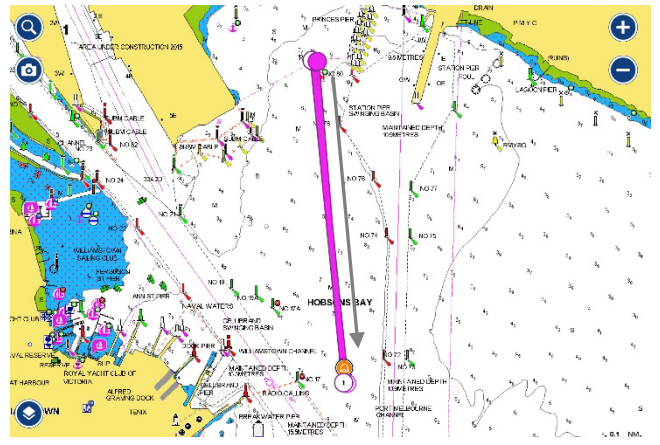
Start/Finish – East of Ch 73.
Start in a Northerly direction – RMYS G to starboard – R3 to starboard, east of bounding marks Ch. 7, 9, 11 and 71 – finish.

Course 14 (Pursuit) – Northerly
Distance 4.5 nm



Start/Finish - Near V mark.
Start in a Northerly direction - R4 to starboard – V mark to starboard – R4 to starboard – finish.

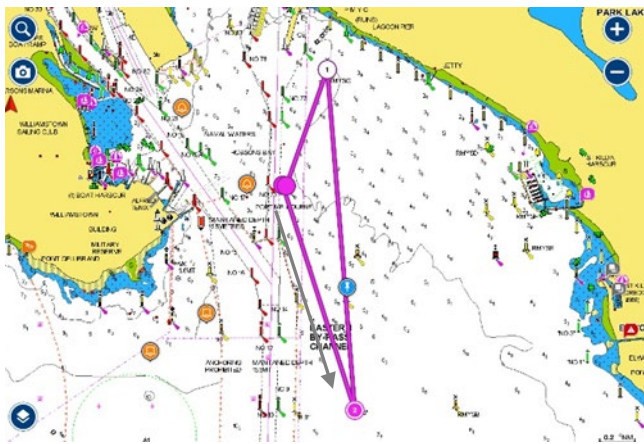
Course 16 (Pursuit) – Southerly
Distance 4.5 nm



Start/Finish - Near R4.
Start in a Southerly direction – V mark to port – R4 to port – V mark to port – finish.

Course 17 (Pursuit) – Southerly

Distance 4.6 nm

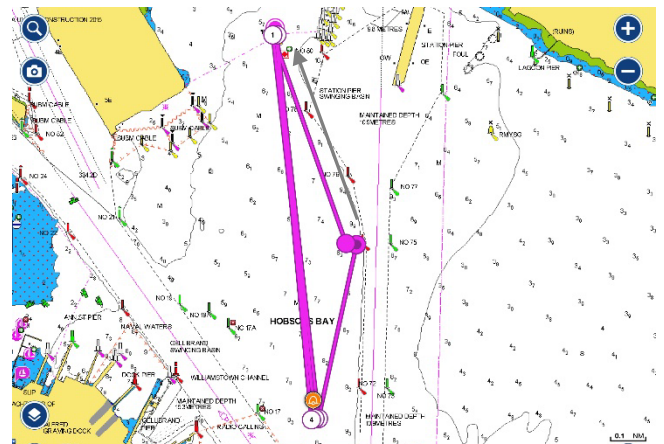


Start/Finish – East of Ch 73.

Start in a Southerly direction, east of bounding marks Ch. 7, 9, 11 and 71 – R3 to port - RMYS G to port – finish.

Course 19 (Pursuit) – Northerly

Distance 6.9 nm (DRAFT)

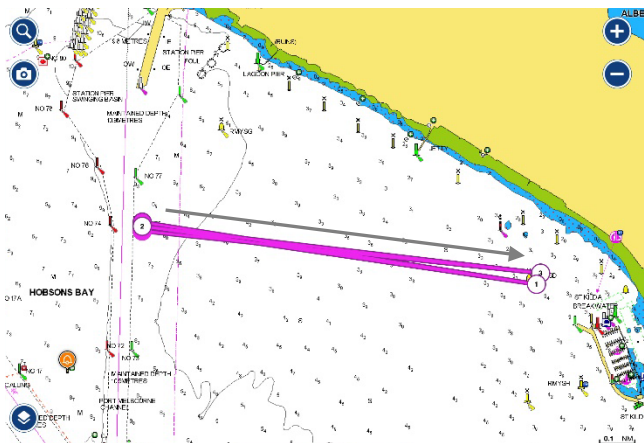


Start/Finish - West Ch 74.

Start in a Northerly direction - R4 to port - V mark to port – R4 to port – V mark to port – R4 to port – V mark to port - finish.

Course 18 (Pursuit) – Westerly/Easterly

Distance 5.2 nm

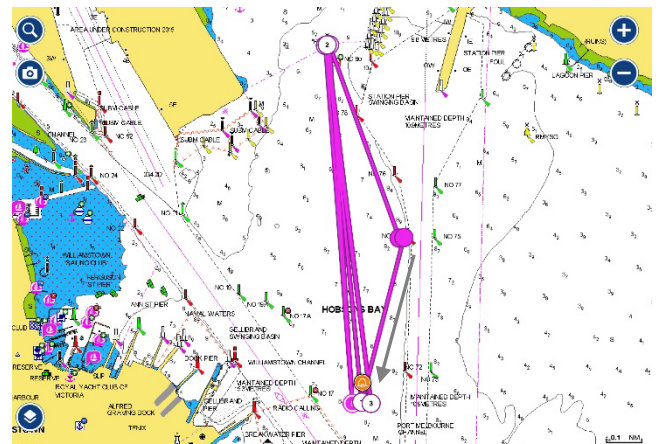


Start/Finish - East Ch 75.

Start in an Easterly direction – RMYS D to starboard – through start/finish to starboard - RMYS D to starboard – finish.

Course 20 (Pursuit) – Southerly

Distance 6.9 nm (DRAFT)

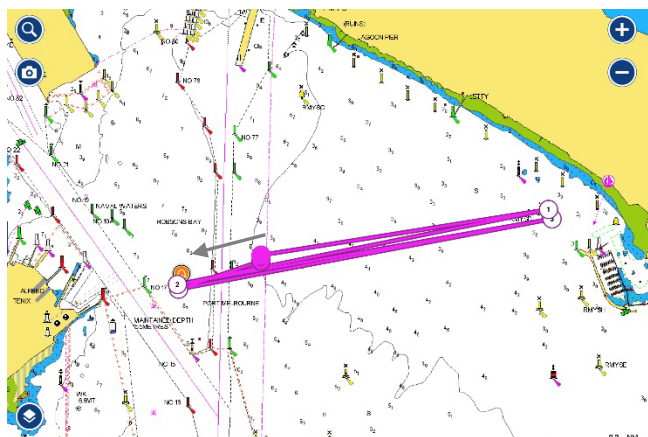


Start/Finish - West Ch 74.

Start in a Southerly direction – V mark to starboard – R4 to starboard – V mark to starboard – R4 mark to starboard – V mark to starboard – R4 to starboard – finish.

Course 21 (Pursuit) – Westerly

Distance 6.6 nm

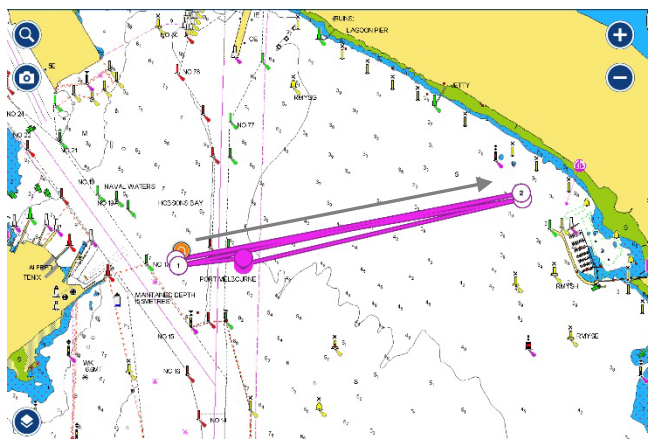


Start/Finish – 500m East of Ch 73.

Start in a Westerly direction – V mark to starboard – RMYS D to starboard – V mark to starboard – RMYS D to starboard - finish.

Course 22 (Pursuit) – Easterly

Distance 6.6 nm

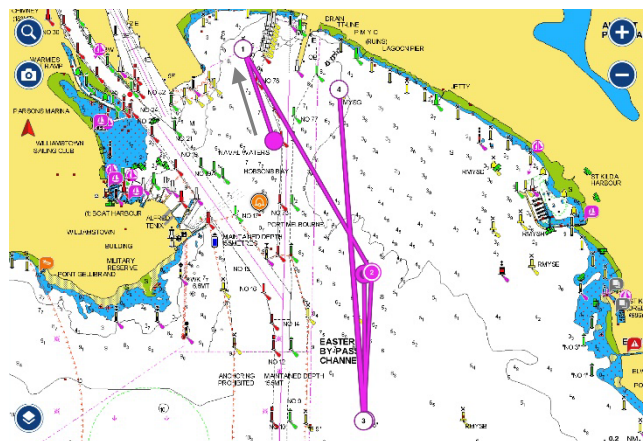


Start/Finish – 500m East of Ch 73.

Start in an Easterly direction – RMYS D to starboard – V mark to starboard – RMYS D to starboard – V mark to starboard - finish.

Course 23 – Northerly

Distance 8.8 nm



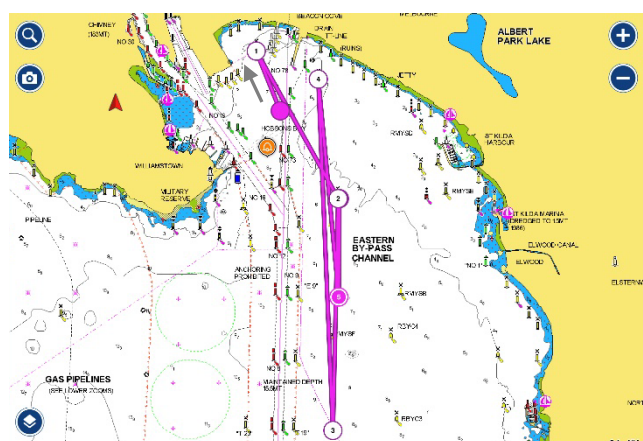
Start: West of Ch 74.

Finish: between RMYS C and Committee Vessel.

Start in a Northerly direction – R4 to starboard – RMYS C to starboard – R3 to port – east of passing marks Ch.11, 9 and 71 – RMYS G to port – R3 to port – east of passing mark Ch. 11 – finish.

Course 24 – Northerly

Distance 11.5 nm



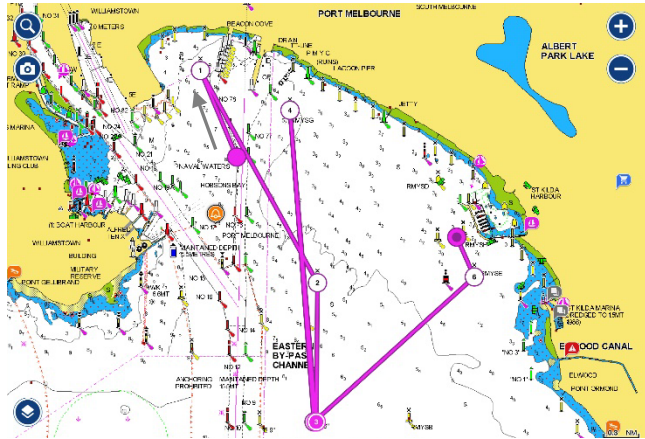
Start: West of Ch 74.

Finish: between RMYS C and Committee Vessel.

Start in a Northerly direction – R4 to starboard – RMYS C to starboard – R2 to port – east of passing marks Ch. 7, 9, 11 and 71 – RMYS G to port – R3 to port – east of passing mark Ch. 11 – finish.

Course 25 – Northerly

Distance 9.5 nm



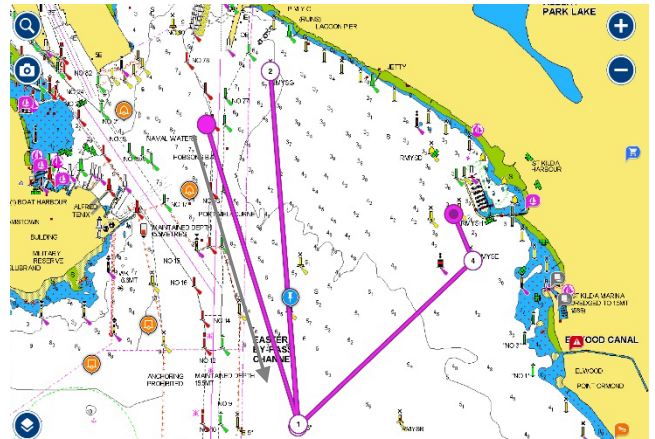
Start: West of Ch 74.

Finish: between the RMYS tower and RMYS A.

Start in a Northerly direction – R4 to starboard – RMYS C to starboard – R3 to port – east of passing marks Ch.11, 9 and 71 – RMYS G to port – R3 to port – RMYS E to port – finish.

Course 27 – Southerly

Distance 8.3 nm



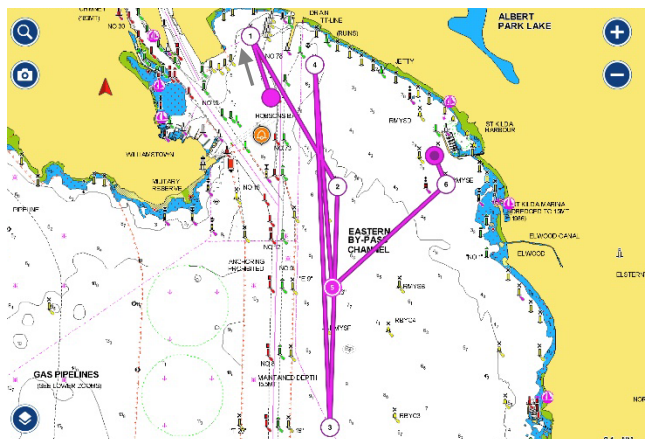
Start: West of Ch 74.

Finish: between the RMYS tower and RMYS A.

Start in a southerly direction, east of bounding marks Ch 71, 11, 9 and 7 – R3 to port - RMYS G to port - east of bounding marks Ch 71, 11, 9 and 7 - R3 to port – RMYS E to port – finish.

Course 26 – Northerly – RMYS Tower finish

Distance 12.3 nm



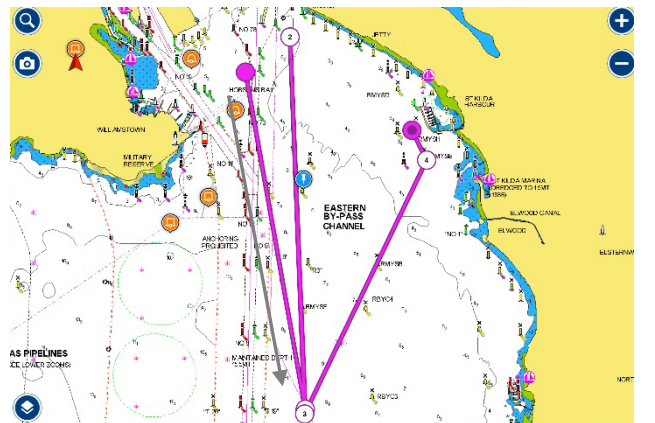
Start: Near Ch 74.

Finish: between the RMYS tower and RMYS A.

Start in a Northerly direction – R4 to starboard – RMYS C to starboard – R2 to port – east of passing marks Ch. 7, 9, 11 and 71 – RMYS G to port – R3 to port – RMYS E to port – finish.

Course 28 – Southerly

Distance 13.6 nm



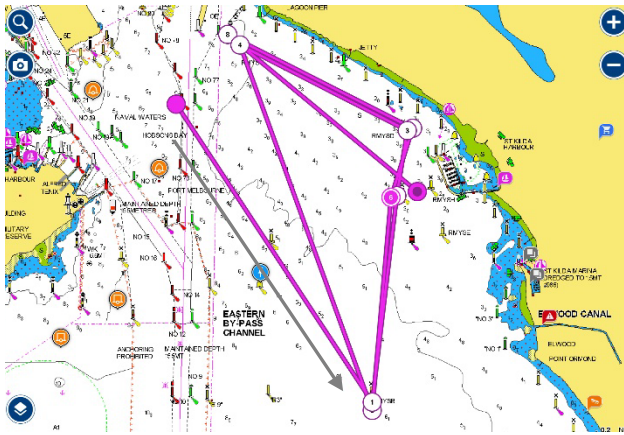
Start: West of Ch 74.

Finish: between the RMYS tower and RMYS A.

Start in a southerly direction, east of bounding marks Ch 71, 11, 9 and 7 – R2 to port – RMYS G to port – east of bounding marks Ch 71, 11, 9 and 7 - R2 to port – RMYS E to port – finish.

Course 29 – South-East

Distance 12.5 nm



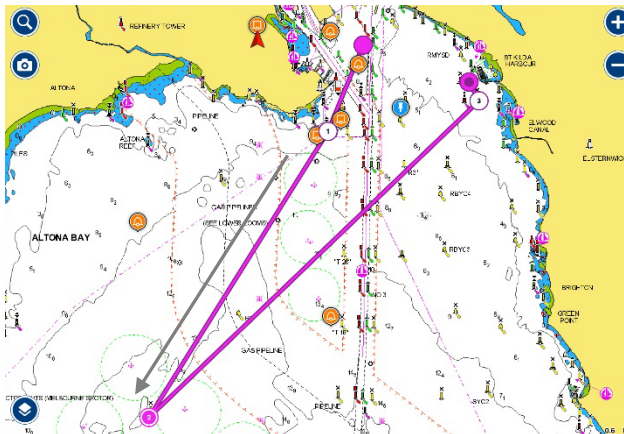
Start: West of Ch 74.

Finish: between the RMYS tower and RMYS A.

Start in a south-easterly direction - east of bounding mark Ch.71 – RMYS B to port – RMYS A to starboard – RMYS D to port – RMYS G to port – RMYS B to port – RMYS A to starboard – RMYS D to port - RMYS G to port – finish.

Course 30 – South-West (RMYS Tower)

Distance 13.8 nm



Start: West of Ch 74.

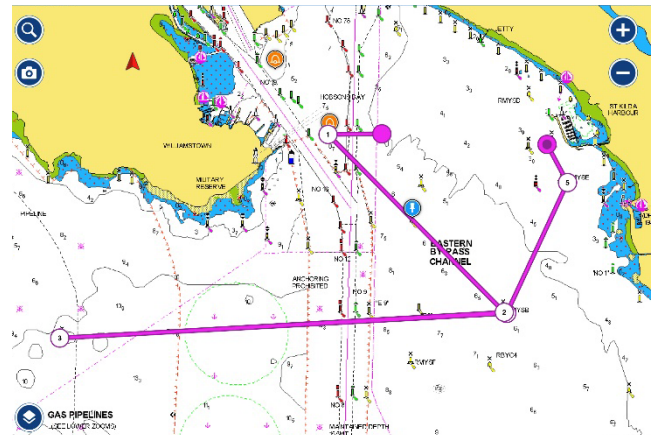
Finish: between the RMYS tower and RMYS A.

Start in a south westerly direction – Gellibrand Shoal mark to starboard – Outer Anchorage to port – RMYS E to port – finish.

Shorten Course Option – delete 'Outer Anchorage to port' and replace with 'P2 to port'.

Course 31 – Westerly (RMYS Tower)

Distance 10.8 nm



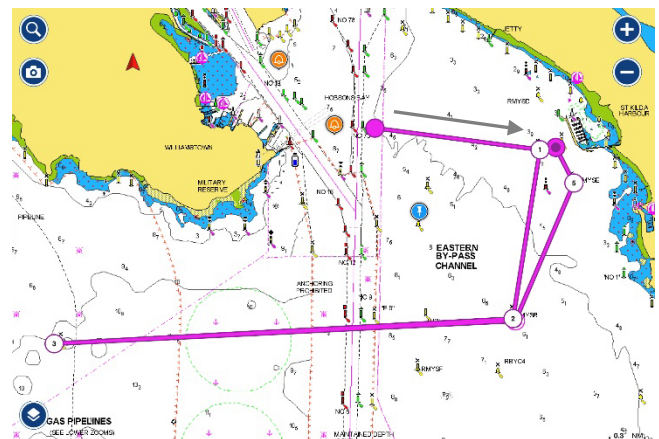
Start: East of Ch 73.

Finish: between the RMYS tower and RMYS A.

Start in a westerly direction – V mark to port – RMYS B to starboard – P3 to port – RMYS B to port - RMYS E to port – finish.

Course 32 – Easterly (RMYS Tower)

Distance 11.7 nm



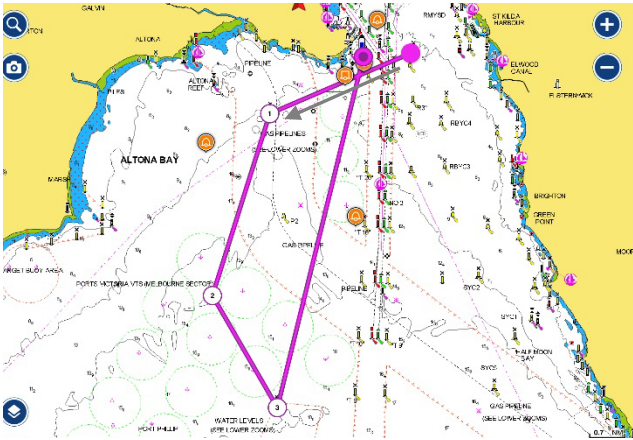
Start: East of Ch 73.

Finish: between the RMYS tower and RMYS A.

Start in an easterly direction – RMYS A to starboard – RMYS B to starboard - P3 to port – RMYS B to port - RMYS E to port – finish.

Course 33 – South-Westerly

Distance 16.3 nm



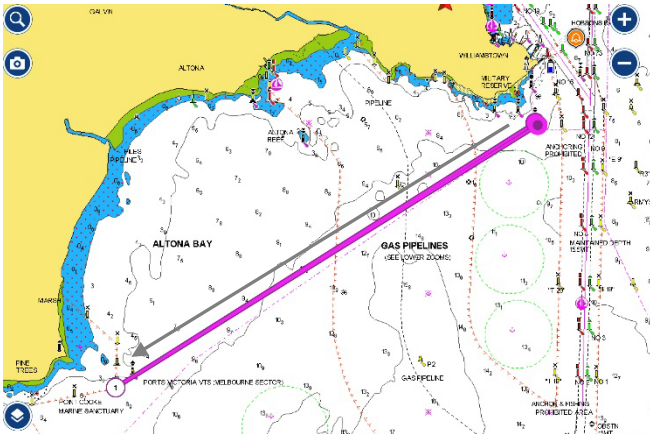
Start: Near RMYS C.

Finish – line projected between the Williamstown Timeball Tower and T28 passing T28 to starboard.

Start in a South Westerly direction – P3 to port - Outer Anchorage to port – Spoil Ground to Port – Gellibrand Shoal Mark to port – finish.

Course 34 – South Westerly

Distance 11.2 nm

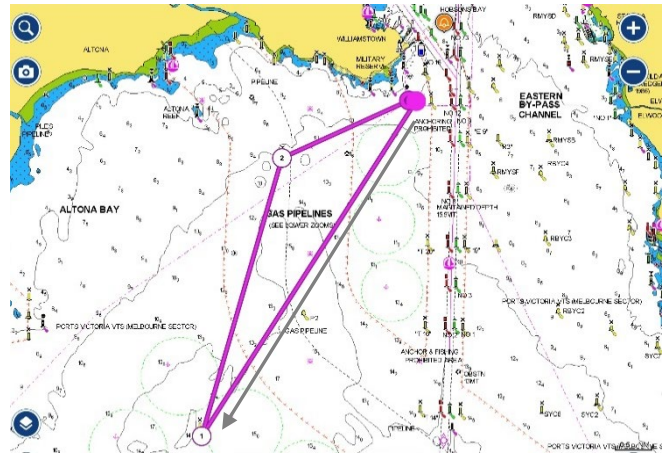


Start/Finish: South. of Gellibrand Shoal Mark.

Start in a south westerly direction - east of bounding mark Pt Cook East Cardinal Mark - Pt Cook South Pile to port - finish.

Course 35 – Southerly

Distance 10.6 nm

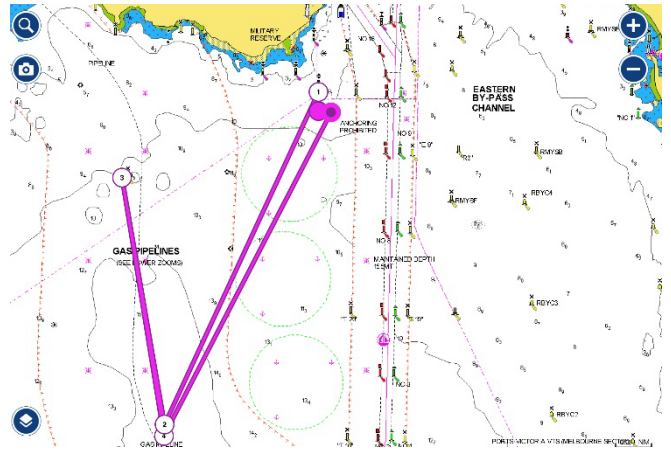


Start/Finish: South. of Gellibrand Shoal Mark

Start in a southerly direction - Outer Anchorage to starboard - P3 to starboard – finish.

Course 36 – Northerly

Distance 10.4 nm

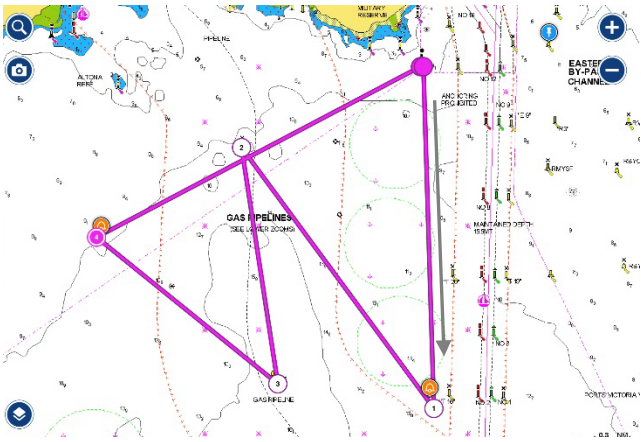


Start/Finish: 750m South of Gellibrand Shoal Mark

Start in a northerly direction - A Mark to Port - P2 to starboard - P3 to starboard - P2 to port – finish.

Course 37 – Southerly

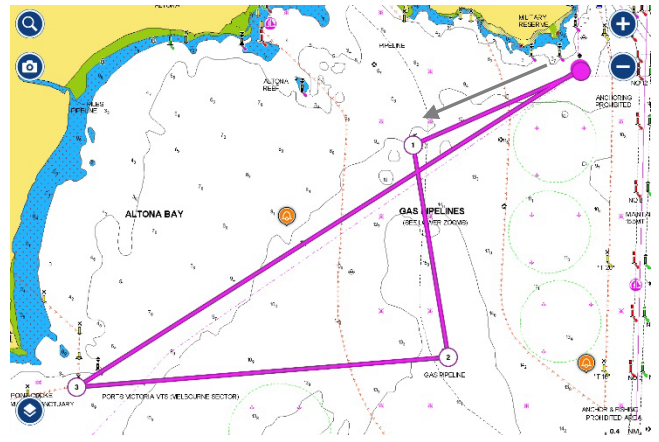
Distance 13.4 nm



Start/Finish – South of Gellibrand Shoal Mark
 Start in a Southerly direction – Uniform mark to starboard - P3 to port – P2 to starboard – Zulu mark to starboard - finish.

Course 39 – Westerly

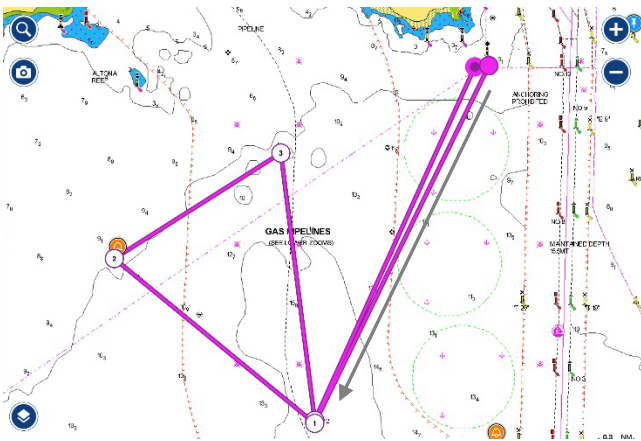
Distance 13.4 nm



Start/Finish - South of Gellibrand Shoal Mark
 Start in a Westerly direction – P3 to port – P2 to starboard – Pt Cook Sanctuary Limit mark to starboard - finish.

Course 38 – Southerly

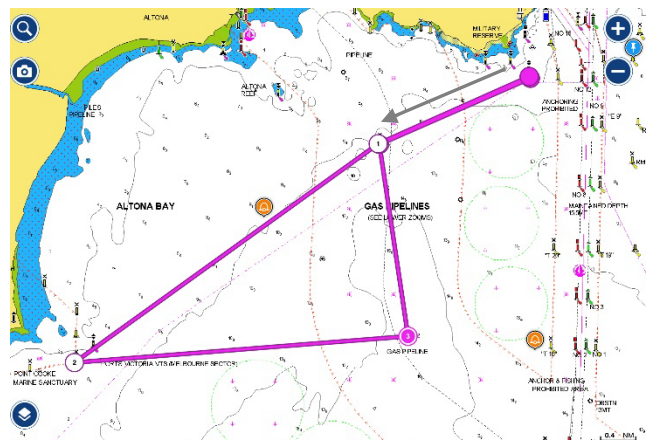
Distance 11.7 nm



Start/Finish - South of Gellibrand Shoal Mark
 Start in a Southerly direction – P2 to starboard – Zulu mark to starboard – P3 to starboard – P2 to port - finish.

Course 40 – Westerly

Distance 13.4 nm



Start/Finish - South of Gellibrand Shoal Mark
 Start in a Westerly direction – P3 to port - Pt Cook Sanctuary Limit mark to port – P2 to port – P3 to starboard - finish.

Marks

The mark positions and descriptions are approximate and a guide only and must not be used for navigational purposes.

Detailed locations of marks and features within Port Phillip are depicted on the relevant Charts AUS143, AUS154 and AUS155, as modified by Notices to Mariners.

A Mark

Laid mark set 250m south of Gellibrand Shoal Mark

Channel 7 (Ch.7) Port of Melbourne Channel Pile	37 53.83S	144 55.72E
Channel 9 (Ch.9) Port of Melbourne Channel Pile	37 53.19S	144 55.75E
Channel 11 (Ch.11) Port of Melbourne Channel Pile	37 52.69S	144 55.76E
Channel 17a (Ch.17a) Port of Melbourne Channel Pile	37 51.54S	144 55.18E
Channel 19 (Ch.19) Port of Melbourne Channel Pile	37 51.48S	144 55.00E
Channel 71 (Ch.71) Port of Melbourne Channel Pile	37 52.06S	144 55.76E
Channel 72 (Ch.72) Port of Melbourne Channel Pile	37 51.72S	144 55.67E
Channel 73 (Ch.73) Port of Melbourne Channel Pile	37 51.72S	144 55.77E
Channel 74 (Ch.74) Port of Melbourne Channel Pile	37 51.30S	144 55.68E
Channel 75 (Ch.75) Port of Melbourne Channel Pile	37 51.29S	144 55.80E
Channel 76 (Ch.76) Port of Melbourne Channel Pile	37 51.09s	144 55.62E
Gellibrand Shoal Mark An East Cardinal Mark	37 52.56S,	144 54.90E
Outer Anchorage A pile with a light frame	37 56.91S	144 51.49E
P2 A yellow buoy marked P2	37 55.46S	144 53.19E
P3 A pile with light frame	37 53.38S	144 52.85E
Pt Cook East Cardinal Mark An East Cardinal Mark	37 55.58S	144 48.92E
Pt Cook Sanctuary Limit Mark Yellow special purpose beacon	37 55.74S	144 48.69E
Pt Cook South Pile Yellow Pile, top mark shape - X shape	37 55.74S	144 48.69E
R2 Yellow light Buoy marked R2	37 54.54S	144 56.34E
R3 Yellow light Buoy marked R3	37 53.10S	144 56.23E
R4 Yellow Buoy located	37 50.70S,	144 55.36E
RMYS A An orange truncated pyramid	37 51.90S	144 57.47E

HBYC/RYCV – Club Courses

RMYS B		
An orange truncated pyramid	37 53.18S	144 57.20E
RMYS C		
An orange truncated pyramid	37 52.19S,	144 56.41E
RMYS D		
An orange truncated pyramid	37 51.48S,	144 57.47E
RMYS E		
An orange truncated pyramid	37 52.15S,	144 57.79E
RMYS F		
An orange truncated pyramid	37 53.59S	144 56.30E
RMYS G		
An orange truncated pyramid	37 51.000S	144 56.25E
SB3		
Special Purpose or General Buoy	37 52.48S	144 56.31E
Spoil Ground		
A yellow buoy	37 59.05S	144 53.05E
T25		
Yellow Transit Lane Mark	37 52.48S	144 55.91E
T28		
Yellow Transit Lane Mark	37 52.31S	144 55.19E
Uniform		
RYCV laid mark	37 55.64S	144°54.97E
V Mark (Volvo Finish mark)		
Yellow Special Purpose Buoy	37 51.80S	144 55.50E
Xray		
RYCV laid mark	37 51.28S	144 54.97E
Zulu		
RYCV laid mark	37 54.20S	144 51.26E