

Appendix F:

John Neilson Long Distance Series

F1. Format

- Race 1 'Scotchmans Hill' - Portarlington Passage Race
- Race 2 Wyndham Harbour Passage Race
- Race 3 Mornington Passage Race
- Race 4 Portarlington Passage Race
- Race 5 St Leonards Passage Race

F2. Class Flags

Combined Fleet Flag R

F3. Sign On

All boats shall 'sign on' by sailing on a starboard tack past the stern of its Race Committee Vessel prior to the first warning signal, hail her sail number and receive an acknowledgement from the Race Committee Vessel.

F5 Return Sail Post Race

It is MANDATORY to advise your intention to return to a boats home port or safe harbour via text message within one hour of finishing to the Race Mobile 0474 079 202 with an estimated ETA.

On arrival at your home port or safe harbour. advise via text to the Race Mobile 0474 079 202.

Competitors are reminded, if considering returning to Hobsons Bay on the same day, that their boats must be adequately equipped to comply with night sailing. AS Safety Category 5N highly recommended. Single hander night returns are an increased risk and are discouraged.

F6 The Courses

Competitors should be aware of the shipping movements that can occur at any time and are reminded to keep clear of shipping within Hobsons Bay and the Williamstown and Port Melbourne Channels.

All boats are referred to Clause 9 (Safety Regulations) of the Primary Sailing Instructions

F6.1 Scotchmans Hill Portarlington Passage Race



BELLARINE PENINSULA
VICTORIA
ESTABLISHED 1982

F6.1.1 Refer to the 'Marks' document attachment 1 for mark locations.

F6.1.2 Start	Vicinity of Ch Mark 71
Gellibrand Shoal Mark	To starboard,
Finish	Portarlington Pier

F6.1.3 Finish

The finishing line shall be between the staff displaying a blue flag on the Race Committee Vessel which may be situated approximately 100m from the north-west corner of Portarlington pier.

Alternatively, Race Officials may finish the race from Portarlington Pier displaying a blue flag indicating a virtual line extending 100 metres from the north-western corner of the pier on a bearing of approximately 315 degrees. See Diagram 1 below.

On approaching the finish (200 metres) call VHF Channel 69 to confirm the boat's name and sail number.

After 19:00, or in the event there are no race officials on station, boats must record their own time and SMS time to the Race mobile 0474 079 202.

Competitors should standardise their watches using the local time displayed on a GPS.

BE AWARE THERE IS A BOATING EXCLUSION ZONE TO THE SOUTH-WEST OF THE FINISHING LINE

Diagram 1



F6.2 Wyndham Harbour Passage Race

F6.2.1 Refer to the 'Marks' document attachment 1 for mark locations.

Start: South of Channel 73

Course 1 - Northerly (24.8 nm aprox)

Start in a northerly direction, RMYS G to starboard, R3 to starboard, Outer Anchorage to port, R2 to port, Outer Anchorage to starboard, finish

Course 2 - Northerly (19.8 nm aprox.)

Start in a northerly direction, RMYS G to starboard, R3 to starboard, Outer Anchorage to starboard, P2 to starboard, Outer Anchorage to starboard, finish.

Course 3 - Southerly (23.2 nm aprox.)

Start in a southerly direction, Gellibrand Shoal mark to starboard, P3 to port, P2 to starboard, Outer Anchorage to starboard, R2 to starboard, Outer Anchorage to starboard, finish.

Course 4 - Southerly (17.6 nm. aprox.)

Start in a southerly direction, Gellibrand Shoal mark to starboard, Outer Anchorage to port, P2 to starboard, Outer Anchorage to starboard, finish.

Course 5 - South Easterly (20.0 nm. Aprox.)

Start in a South Easterly direction, RMYS B to starboard, P3 to port, R2 to starboard, Outer Anchorage to starboard, finish.

Course 6 - East/West (20.7 nm. Aprox.)

Start: Start in an Easterly direction, RMYS A to starboard, R3 to starboard, P3 to port, R2 to starboard, Outer Anchorage to starboard, finish.

F6.2.2 Finish

The finishing line shall be an imaginary line between the staff displaying a blue flag on the committee vessel and the western corner of the Wyndham Harbour breakwater or an imaginary line extending from that corner to the Southeast.

See Diagram 2 attached.

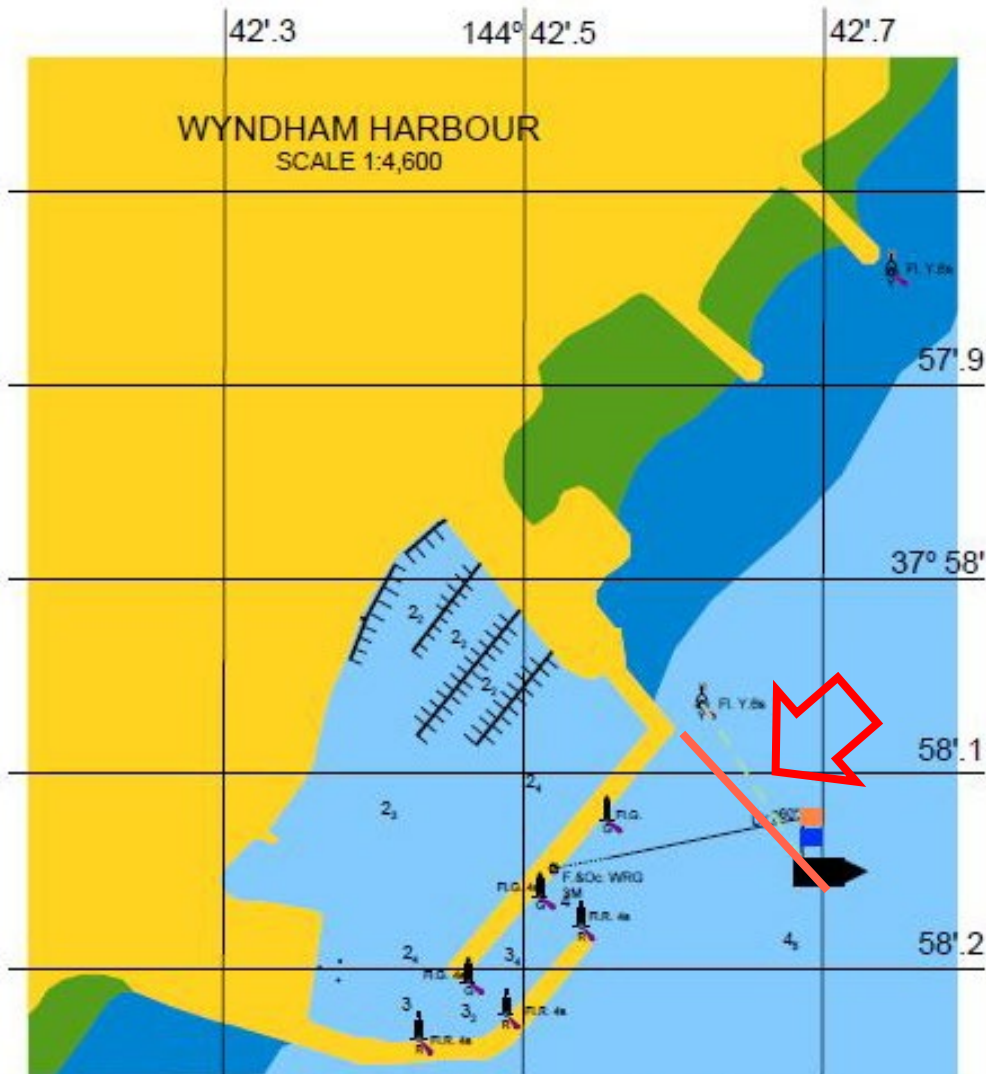
A boat may be on station, flying orange, blue and WYC burgee.

On approaching the finish (200 metres) call VHF Channel 69 to confirm the boat's name and sail number.

After 19:00, or in the event there are no race officials on station, boats must record their own time and SMS time to the Race mobile 0474 079 202.

Competitors should standardise their watches using the local time displayed on a GPS.

Diagram 2



F6.3 Mornington Passage Race

F6.3.1 Refer to the 'Marks' document attachment 1 for mark locations.

F6.3.2 Start Vicinity of Ch Mark 71
 Proceed in a Southerly direction.

Finish Mornington Pier

The finishing line shall be a line between a black line on a yellow disc on the north-east face of the Mornington Yacht Club (MYC) Tower and the MYC finish mark, an orange barrel buoy which is outside the harbour limits and located approximately 275 metres east north - east of the Mornington Pier Light.

See Diagram 3 attached.

Boats crossing an extension of the finish line inside the Harbour Limit Clearance Buoy (Orange) shall be scored Did Not Finish (DNF) without hearing. This changes RRS 63.1, A4 and A5.

The Harbour Limit Clearance Buoy must be left to starboard.

Boats shall finish in a south easterly direction between the Finish mark (leave to port) and the race control tower.

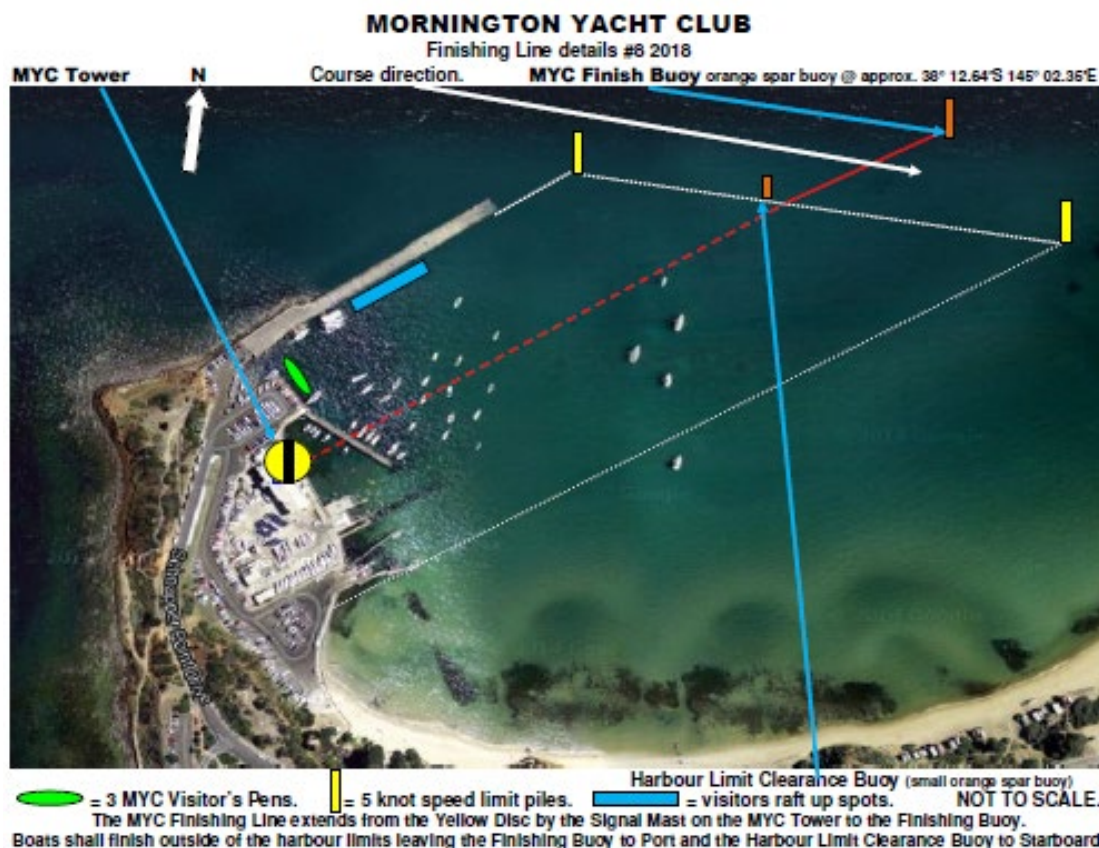
On approaching the finish (200 metres) call VHF Channel 69 to confirm the boat's name and sail number.

Boats are requested to record their own times when finishing then check with officials of the Mornington Yacht Club. The Tower at Mornington Yacht Club will be manned until 19:00 hours.

Boats finishing after this time shall record their own times and SMS their finishing times to the Race mobile 0474 079 202.

Competitors should standardise their watches using the local time displayed on a GPS.

Diagram 3



F6.4 Portarlington (Two) Passage Race

F6.4.1 Refer to the 'Marks' document attachment 1 for mark locations.

F6.4.2 Start	Vicinity of Ch Mark 71
Gellibrand Shoal Mark	To starboard,
P3	To port
Entrance Beacon	To port - (Cardinal Beacon – approx. 38° 04.947'S - 144° 39.937'E)
Finish	Portarlington Pier as per diagram below.

F6.4.3 Finish

The finishing line shall be between the staff displaying a blue flag on the Race Committee Vessel which may be situated approximately 100m from the north-west corner of Portarlington pier.

Alternatively, Race Officials may finish the race from Portarlington Pier displaying a blue flag indicating a virtual line extending 100 metres from the north-western corner of the pier on a bearing of approximately 315 degrees. See Diagram 4 below.

On approaching the finish (200 metres) call VHF Channel 69 to confirm the boat's name and sail number.

After 19:00, or in the event there are no race officials on station, boats must record their own time and SMS time to the Race mobile 0474 079 202.

Competitors should standardise their watches using the local time displayed on a GPS.

BE AWARE THERE IS A BOATING EXCLUSION ZONE TO THE SOUTH-WEST OF THE FINISHING LINE

Diagram 4



F6.5 St Leonards Passage Race

F6.5.1 Refer to the 'Marks' document attachment 1 for mark locations.

F6.5.2 Start Vicinity of Ch Mark 71
 Gellibrand Shoal Mark To starboard
 Finish St Leonards Pier

The finishing line shall be between the staff displaying a blue flag on the Race Committee Vessel which may be situated approximately 200m from the eastern corner of the St Leonards Pier on a bearing of approximately 90 degrees.

Alternatively, Race Officials may finish the race from the St Leonards Pier, displaying a blue flag with a virtual line extending 200 metres from the north-eastern corner of the Pier on a bearing of approximately 90 degrees.

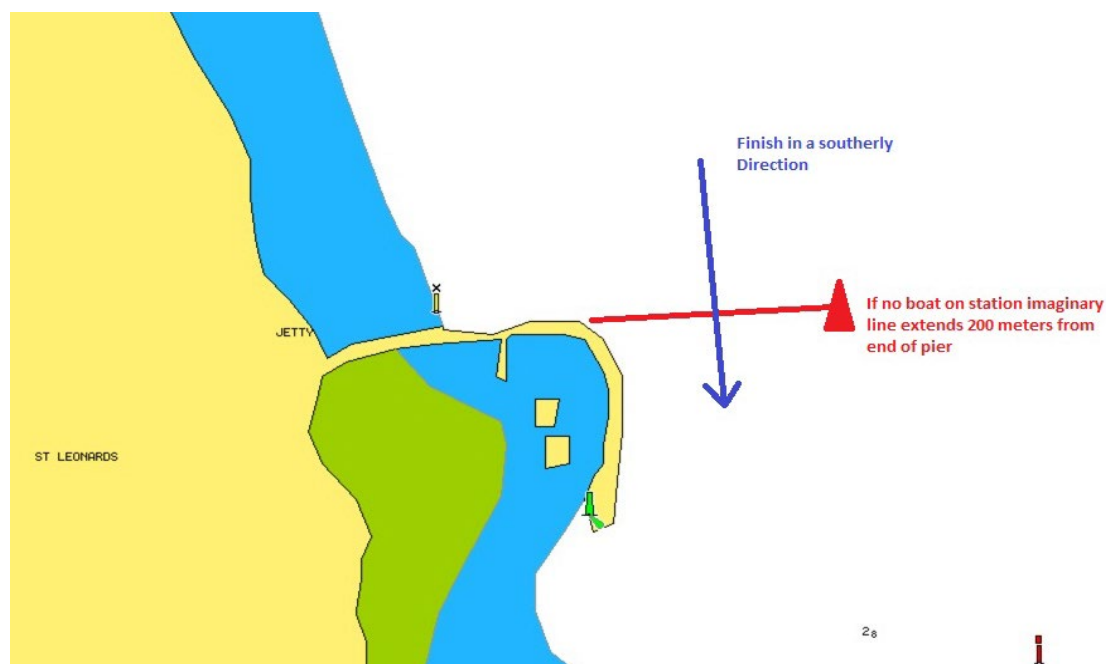
See Diagram 5 below.

On approach to the finish (200 metres) call on VHF Channel 69 to confirm the boat name and sail number.

After 19:00, or in the event there are no race officials, boats must record their own time and SMS time to the Race mobile 0474 079 202.

Competitors should standardise their watches using the local time displayed on a GPS.

Diagram 5



F7 Time Limit

The time limit for the first boat to sail her course and finish shall be 17:00 for Portarlinton, Wyndham Harbour and St Leonards Passage races.

The time limit for the first boat to sail the Mornington Passage course and finish shall be 18:00

If no boat finishes within the time limit the race shall be abandoned.

Boats failing to finish within 3 hours after the first boat sails her course and finishes shall be scored Did Not Finish (DNF) without hearing. This changes RRS 35, A4 and A5

F8 Prizes

The John Neilson Series Trophy shall be given to the first placed PHS HBYC boat in the series.

The first HBYC placed boat shall be given the relevant Trophy as follows.

Race 1 – 'Scotchmans Hill' - Portarlinton Passage Race (One)

Walter Paton Memorial Trophy (PHS)

Alec Nelson Trophy (AMS)

Race 2 – Wyndham Harbour Passage Race

Vice Commodores Cup (PHS)

Club Member of the Year Trophy (AMS)

Race 3 – Mornington Passage Race

Mornington Cup (PHS)

Club Race Trophy (AMS)

Race 4 – Portarlinton Passage Race (Two)

Stan Gibson Trophy (PHS)

Race 5 – St Leonards Passage Race

Don Thompson Trophy (PHS)

Michael Wilson Trophy (AMS)

Additional prizes shall be given at the discretion of Hobsons Bay Yacht Club.