

**Welder MFG LLC**  
**P.O. Box 28**  
**Kilgore, NE 69216**  
**Phone: 402.966.2251**  
**Fax: 402.966.2251**

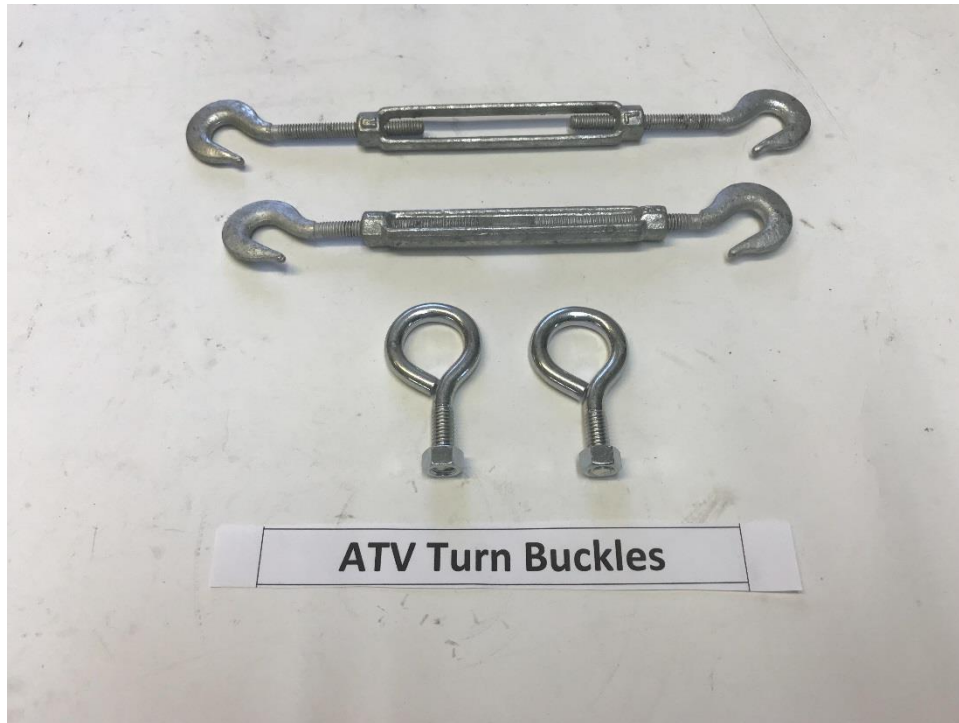
**weldermanufacturing.com**

**UTV**

**No Counter Manual**



# MOUNTING CAKE FEEDER



- You will need 4-3/8" X 3" Eyelet and 4- 5/16" Hook to Hook Turnbuckles and 8 Nuts.
- Locate your tie-down hook points in your UTV box.
- Position caker in the UTV box. UScrew the turn buckles to their maximum length, attach the turn buckle to the hook point in the ATV Box, and determine the height of your eye bolt.
- Drill a hole in the leg of the caker.
- Place one nut on the eyelet, place eyelet through the hole in the caker leg, (eyelet loop on the outside,) and place a nut on the eyelet to tighten (You will have a sandwich effect on the leg), hook your tun buckles in, and tighten everything into place.

**CAUTION UTV Feeder SHOULD NOT be operated on unlevel terrain!!**

# ATV Side Big Plug No Counter Kit



## UTV Side Wiring Installation

You will only be wiring the UTV (female) side of your UTV. When you are finished, you will only need to unplug one plug to remove your cake feeder from your UTV.

Mount the plug plate to the bed of your UTV in the vicinity of the male plug on the feeder. You will want enough space in the box for easy connection and disconnection.

You will be connecting all your wires into the 7 prong plug that is included in the harness

Run the red-hot wire to the battery compartment of your UTV.

Attach the eyelet that is on the in-line-fuse holder to the **(Positive terminal of your battery)**. **20 Amp Fuse included!**

Attach the ground wire to **(Negative Terminal of your battery)**.

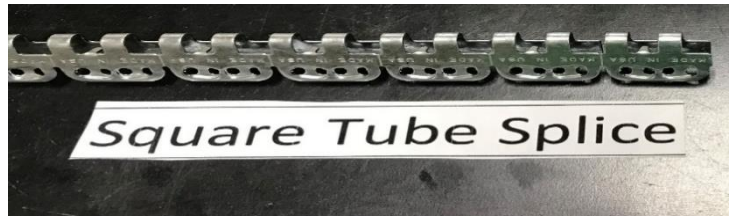
Run your push button cord from the Cab of the UTV to 4 plug at the back of the cab, to the box and the male end of your feeder meets. Connect the

wires to the silver female 4 prong plug as shown in the wiring diagram provided.

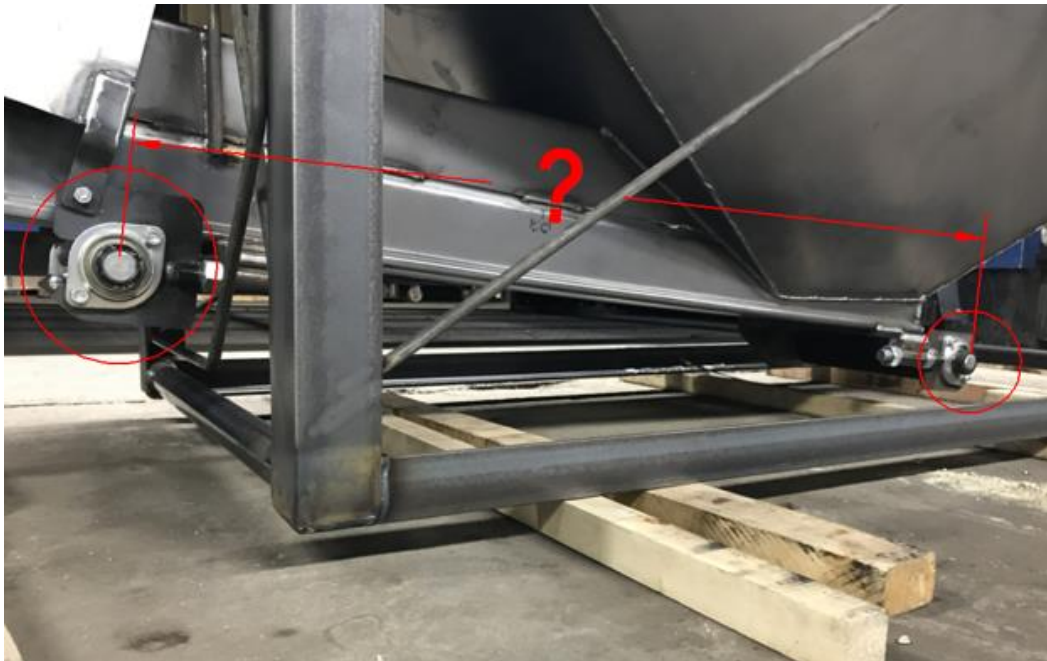
<b>Ground Wire</b>		<b>B</b>
<b>Hot Wire</b>	<b>Red</b>	<b>G</b>
<b>Push Button</b>		
	<b>Black</b>	<b>R</b>
	<b>White</b>	<b>W</b>



# Belt



ATV belt is – 6-7/8" wide X 78" Long



Chute End

TO

Motor End

## **I need a new belt:**

### **What size belt do I need:**

Measure Center of roller bearing in the front to the center of the roller bearing in the back, on the left side of the feeder.

Formula is Distance between roller bearings X 2 plus 6 inches.

### **Can I splice my broken belt?**

**WE do not recommend splicing your belt.**

Both Square tube and round tube belt Splices take a special tool to install properly!

You are likely not going to have enough length after you splice your belt unless you add length into the belt this would require setting 2 New splices.

### **My Feeder is full, how can I change or fix a broken belt?**

If you can get to the splice point, to the chute end of your feeder, you can try attaching the new belt to the splice point and carefully feed it through to the other side.

### **Belt Tracking off center! ( Not running Straight)**

Your belt has been aligned correctly at installation.

As you use your feeder, your belt may start to shift to one side.

**Make sure the drive roller is clear of any twine or other obstructions to prevent shifting.**

Determine which side your belt is moving toward.

The Belt will shift away from the tight side.

You may need to loosen or tighten the bearing cages adjustment nuts on opposite sides of your feeder to work your belt back into to the center of your tube.

Take a 1 1/8" wrench to the 3/4" ready bolts on the bearing cages, loosen the nut on the bearing cage, on the side the belt is moving toward, and tighten, the nut on the bearing cage, on the side the belt is moving away from. This will cause the belt to travel back into place.

# UTV Motor Gear Box Combo



This unit runs on a 1/8 HP 12 Volt motor/gear box combo, connected to the UTV with the hot wire and an inline fuse holder, with a 20-amp fuse (provided)

**My Motor is losing power and running slowly and lugging down.**

Check your bearings on your rollers, they should be clear of any twine, or wire or dirt.

If they are turning freely, what are you using for a hotwire?

We have found you really do need the Heavy Welding cable that was original to your caker to carry the proper voltage to the motor.

**The Diode is an electrical shock absorber. We recommend all Cakers have a diode. This diode is located back on the solenoid.**



## Installing caker for the season and I can't get it to run.

First test to make sure that the motor is in working condition.

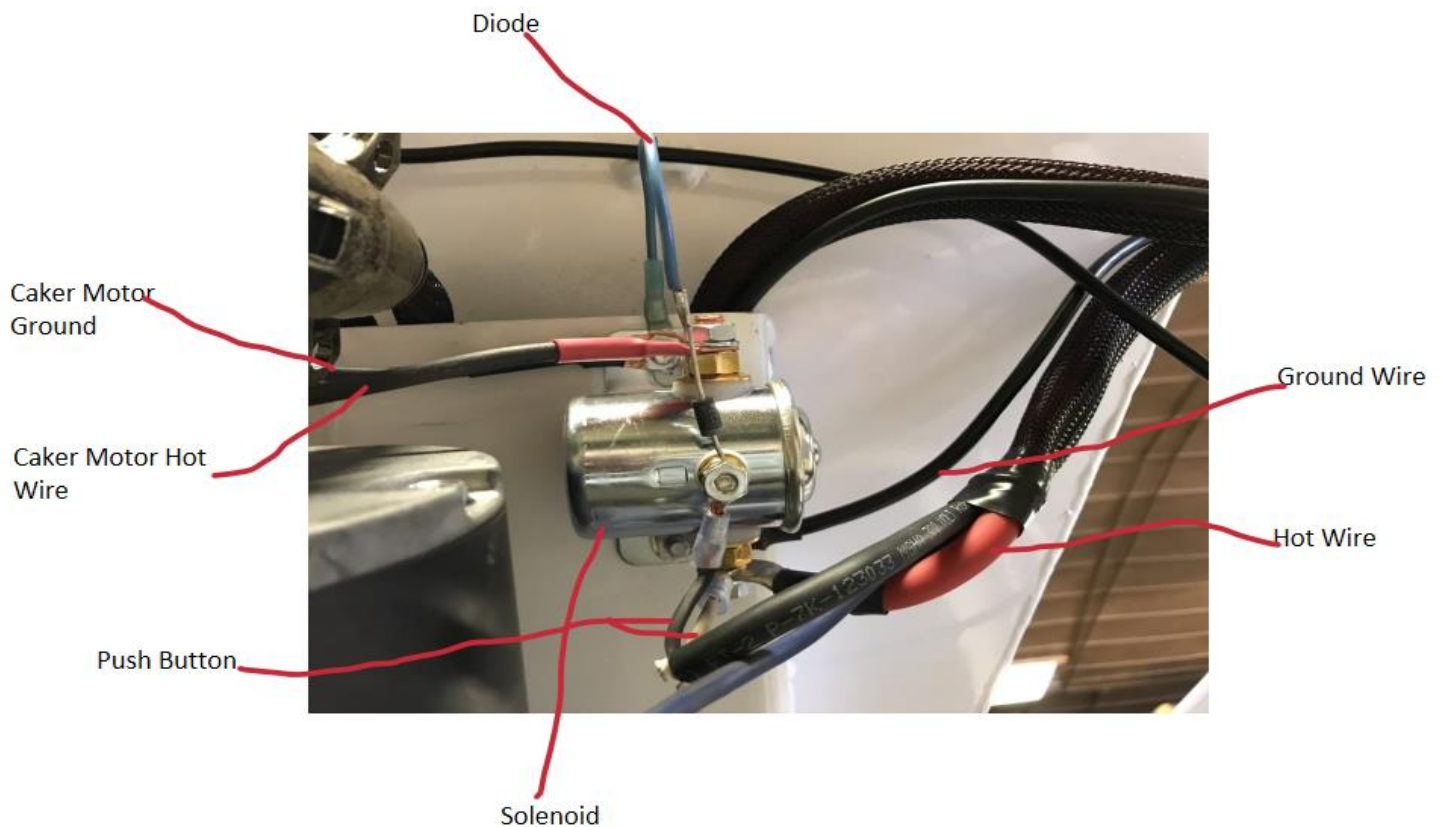
To do this you need to disconnect the **Hot Wire** on the caker from the solenoid and touch it to the Hot wire post on the motor.

If the motor runs the motor is fine, it could be the solenoid or the push button.

Reconnect the hot wire to its original post.

Next test the **Push Button** by creating a jumper wire from the smallest post on the **Solenoid**, to the post on the **Solenoid** where the **hot wire** from the battery connects.

<b>Motor runs</b>	Bad push button, or damage push button
<b>cordSolenoid Clicks</b>	Bad Ground
<b>Nothing happens</b>	Bad solenoid, Or no Ground





**Cake Feeder won't start solenoid only Clicks.**

You most likely have an incomplete or bad ground.

Test this by taking a set of jumper cables, find a clean, rust and paint- free spot on the Caker connect both clamps from one end of the cables here, and then connect the opposite end of the cables to your pickup frame. If your caker begins working normally, you have a bad ground.

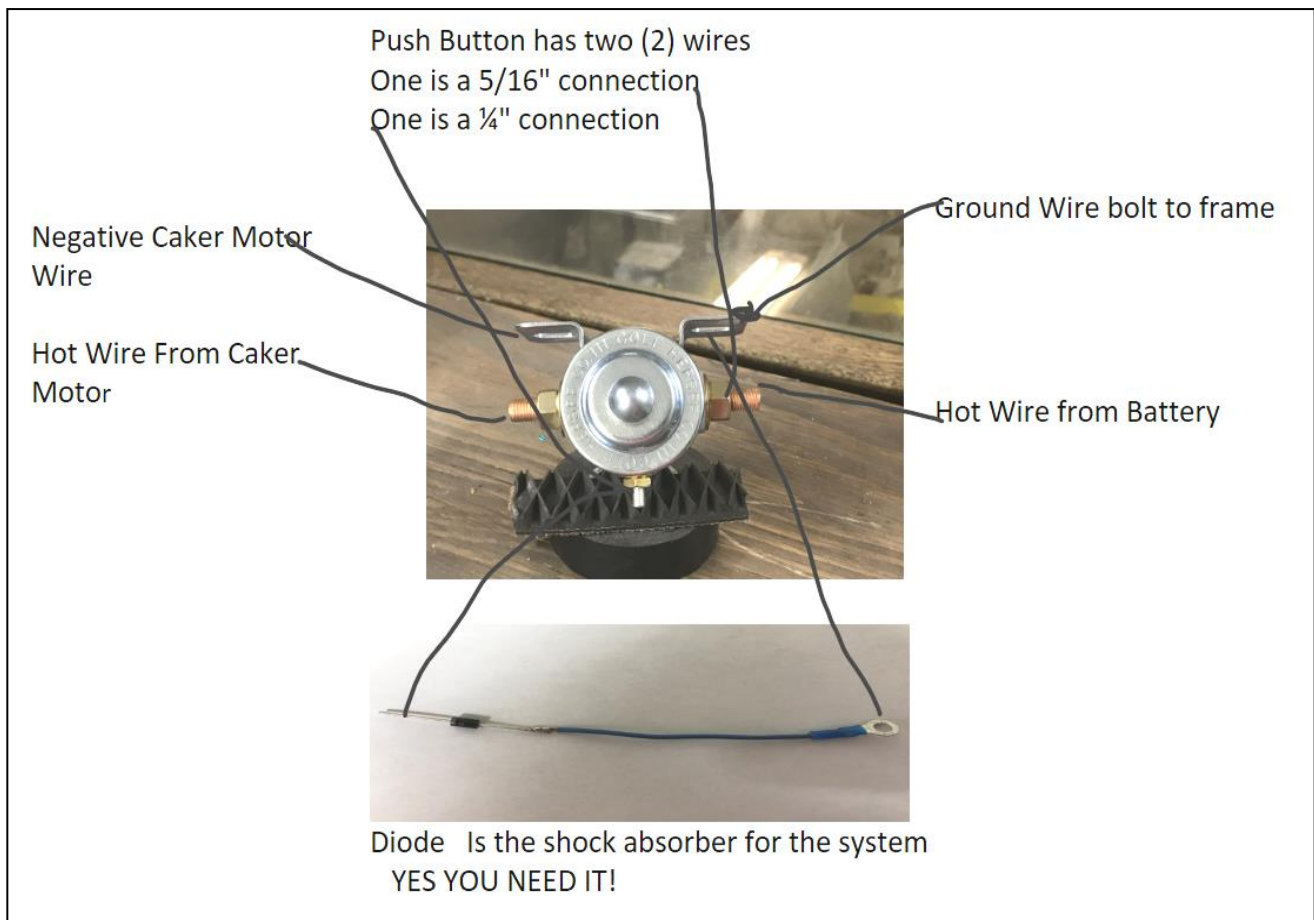
Check to ensure that your plugs are bolted securely where you have chosen to mount them. If the plugs are not secure, an incomplete ground can occur.

Check for any ice or mud, or rust build-up that could be impeding the ground.

To alleviate your bad ground issue, you can install a quick jumper wire on your female gold plug, if you have a plug kit. Simply put a new ground on with an eyelet and bolt it with the mounted plug, and the other end of the wire to your pickup frame. Your plugs, when connected, will ground back to your pickup.

**My Push Button gets hot when I use it:**

All the power for your system is going through your push button! You have your solenoid wired wrong.



1. Connect Solenoid to the caker (2) 1/4"Bolts.
2. To the top 5/16" bolt on the Solenoid connect the Cake Motor Hot Wire (Red)
3. To the bottom 5/16" bolt on Solenoid connect Red Wire coming from the Plug and the 5/16" eyelet from the Push button wire
4. To the small 1/4" connection on the Solenoid connect the wire end of the Diode and the small eyelet from the push button
5. To the top solenoid frame bolt connect the Diode Eyelet and The Caker Motor Ground Wire ( Black )
6. To the bolt solenoid frame bolt connect the Black ground wire from Plug.

#### Frequent Q/A:

These feeders are not painted inside.

We keep a handful of sirens on hand in the office. Please follow the suggested on/off intermittent to avoid burning your siren up.

For any questions you may have, give us a call. Keep up with our website and Facebook page for details, deals, and other products we stock.

**Thank you all for your business with our small-town operation! We work HARD for you!**

[www.welkermanufacturing.com](http://www.welkermanufacturing.com)

