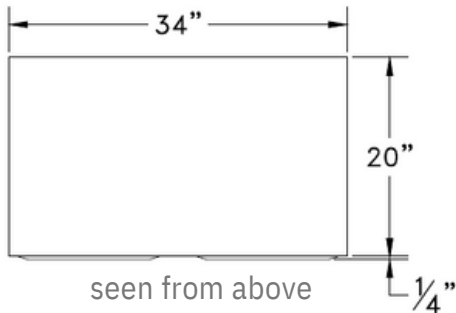
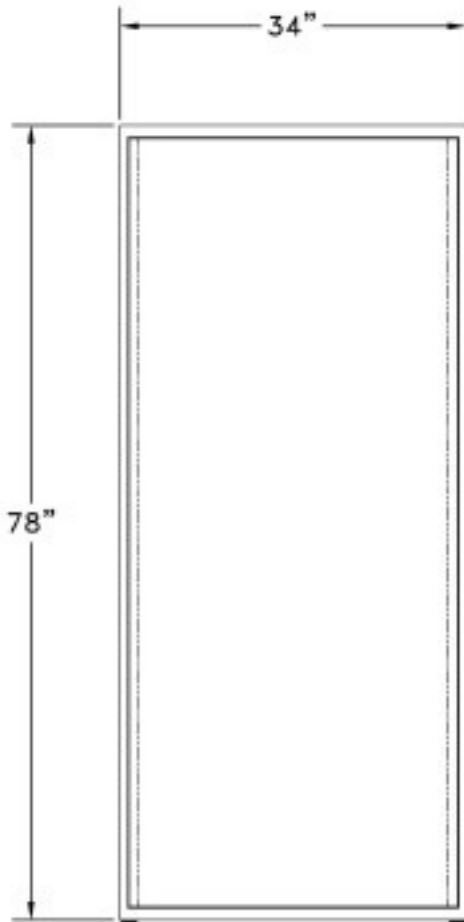


TECHNICAL SHEET

1 Door Extension



Size	H	W	D
	1981 mm 78 in	864 mm 34 in	500 mm 20 in

Box size	H	W	
	940 mm 37 in	318 mm 12 1/2 in	X-Large

Voltage	110V / 7A
----------------	-----------

Temperature	Inside Locker: -5°F to 122°F / -15°C to 50°C
	Outside Locker: -40°F to 122°F / -40°C to 50°C

Gross Weight	300 LBS
---------------------	---------

Materials	Interior: Steel Exterior: Galvanized steel
------------------	--

IP Class	Interior: None Exterior: IP65
-----------------	---------------------------------



PARCEL ONE

Code # **E1**