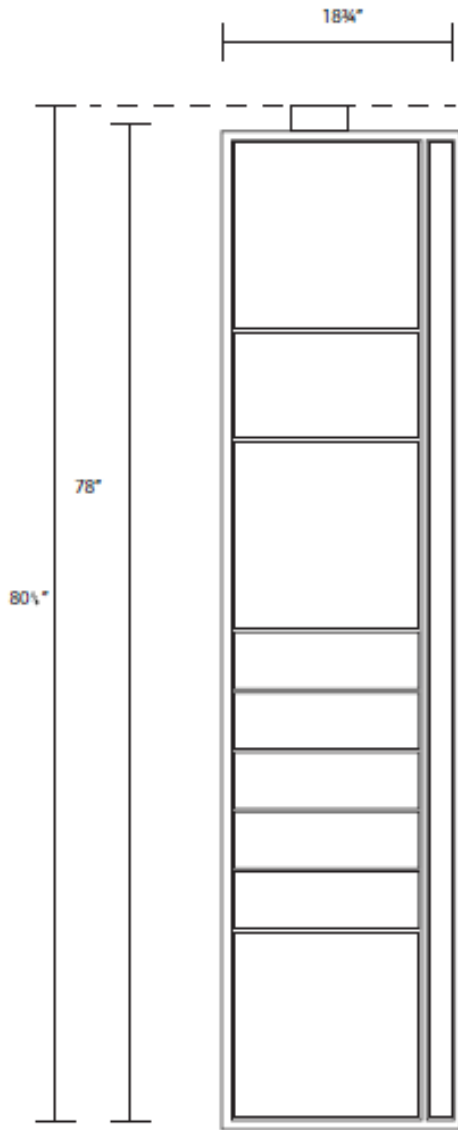


TECHNICAL SHEET



8 Door Extension

Size	H	W	D
	2048 mm	476 mm	500 mm
	80 5/8 in	18 3/4 in	20 in

Box size	H	W	Small
	92 mm	318 mm	
	3 5/8 in	12 1/2 in	
	Medium	168 mm	318 mm
	6 5/8 in	12 1/2 in	
Large	362 mm	318 mm	
	14 1/4 in	12 1/2 in	

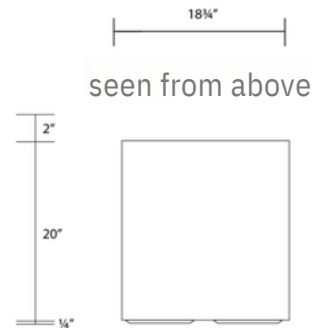
Voltage	110V / 7A
----------------	-----------

Temperature	Inside Locker: -5°F to 122°F / -15°C to 50°C
	Outside Locker: -40°F to 122°F / -40°C to 50°C

Gross Weight	175 LBS
---------------------	---------

Materials	Interior: Steel Exterior: Galvanized steel
------------------	--

IP Class	Interior: None Exterior: IP65
-----------------	---------------------------------



(P) PARCEL ONE

Code # **PE9**