




# NOW NORTHWICH

## Easy Read Programme

Different colour backgrounds available upon request

<p><b>Partners</b></p>    	<p><b>Other Investors</b></p>     <p>And Elected Members of CW&amp;C Council</p>	<p><b>POWERED BY</b> <b>LEVELLING UP</b></p>  	<p><b>Public Sector Funders</b></p>  	
---	--	---	--	---



## Easy Read Programme

Different colour backgrounds available upon request.

## Contents

What is Now Northwich?

Where is Now Northwich?

Travelling to Now Northwich.

Accessibility at Now Northwich.

Facilities at Now Northwich.

Programme at Now Northwich.

## Additional Access Support

If you have any other questions please contact

By email: [nownorthwich@cheshiredance.org](mailto:nownorthwich@cheshiredance.org)

By phone: 01606 861 770

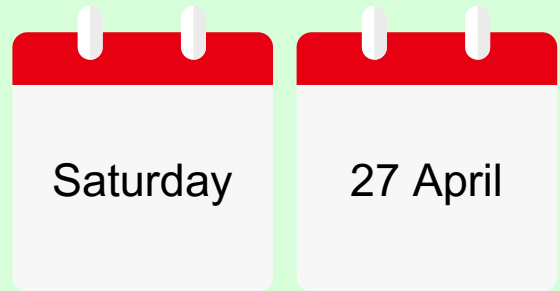
You can also message us on [Facebook](#), [Instagram](#) and [Twitter](#).

# What is Now Northwich?

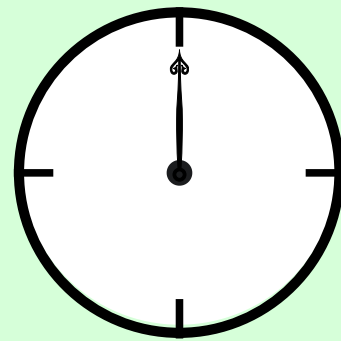
Now Northwich is an **inclusive** outdoor dance **festival** for **children and families**.



It is on Saturday 27 April 2024.



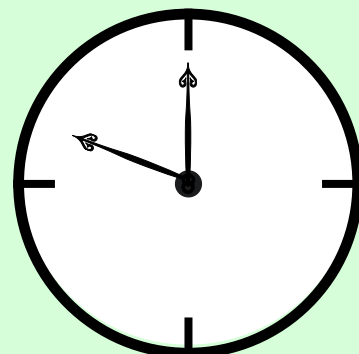
Now Northwich **starts at**  
**12:00pm**



There will be **loud music**,  
exciting **performances** and  
**bright colours**.



Now Northwich **finishes at**  
**10:00pm**



# Where is Now Northwich?

The outdoor dance festival will take place in the town of Northwich.



From **The Plaza** on Witton Street.



Through the **Town Centre**.



Across **Barons Quay**.



# Travelling to Now Northwich?

Northwich has a train station which is a **15 minute** walk into the town centre.

Click on the train to find out more information.



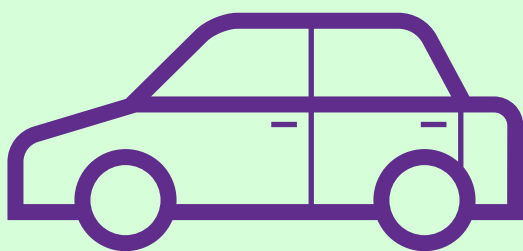
Travel to Northwich by bus and walk **5 minutes** into the town centre.

Click on the bus below to find out more information.



Northwich has many accessible parking spaces.

Click on the car below to find out more information.



Click Read More, to find out more information about travelling to Northwich.



# Accessibility at Now Northwich.

The routes to performances are **accessible by wheelchair**. Stewards will be at the festival in **yellow jackets** to assist attendees.



Blue Badge Car Parks

- Barons Quay
- Odeon Northwich
- Central Palace Drive

Click on the **Blue Badge** to see more!



Now Northwich will include directional **Makaton signs** and **key information**.



Some performances will include a **BSL interpreter**.



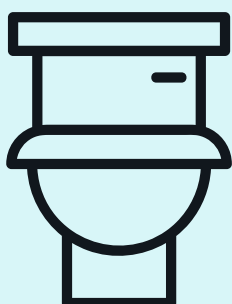
We encourage attendees to bring along **noise cancelling headphones**.



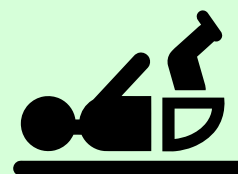
# Facilities at Now Northwich.

**Accessible toilets** can be found in **Barons Quay** behind the **Odeon Cinema**.

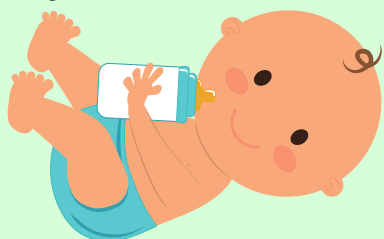
The **Mobiloo** can be found in **River Park** for visitors with PMLD.



Additional **Changing Spaces** can be found at Northwich Leisure centre.



**National Childbirth Trust** will be onsite with baby changing and feeding facilities. Found near **River Park**.



A **quiet space** can be found at the Salvation Army. The space will be open from **12:00 - 16:00**. Here there is also an accessible toilet.



Now Northwich is **dog friendly!** **Assistance dogs** and **all dogs** are welcome. Please ensure to pick up after your pets.



# Connecting Routes

## *By Young Producers*

Connect with nature as you travel around  
Now Northwich's Interactive Family Trail.

You will find -

- Pop up performances
- Butterfly making
- Circus skills workshops

Be sure to collect your nature  
stamp as you pass by stations!



## Stations

- Barons Quay Square
- River Park
- Weaver Point
- Apple Market Place
- Northwich Library

## Times

Entire Trail: 12pm - 5pm

Weaver Point: 2.30pm

Northwich Library:

2:30pm and 4pm





# Rainbow Butterfly

by *Ella Mesma*

Maja has a big imagination and would love to be a Rainbow Butterfly. Come along to see:

- Aerial circus
- Contortion
- Contemporary Dance
- Hip Hop Dance

## Performances Times

1pm

4.30pm

## Where to find

River Park

Click here to see a video of the performance!



# Roll Play

by *Simple Cypher*

Be amazed by the explosive tricks in Roll Play. Come along to see:

- A magnificent Cyr wheel
- Group juggling
- Feel-good choreographies

## Performances Times

1.30pm

5pm

## Where to find

Weaver Point

Click here to see a video  
of the performance!



# IRMÃ-Sister

by *Damae Dance*

IRMÃ means sister. This performance celebrates women's strength and complexity. Come along to see:

- Contemporary Dance
- Dancer's lifting each other in the air
- Two women dancing together

## Performances Times

2pm

5.30pm

## Where to find

Weaver Point

Click here to see a video  
of the performance!



# Capoeira Extravaganza

Capoeira is an Afro-Brazilian martial art and game. Come along to see:

- Kicks and sweeps
- Acrobatics
- Complex moves

## Performances Times

2:30pm

4pm

## Where to find

Barons Quay Square

Click here to see a video  
of the performance!



# **In This Place, Upon This Earth** *by Company Carpi & Northwich Community*

Professional and community dancers  
some together to tell the stories of  
Northwich. Come along to see:

- Live dance
- Opera
- Orchestral music

This performance has been made especially  
for Now Northwich!

## **Performances Times**

4.30pm

6.30pm

## **Where to find**

The Plaza



# The Album: Skool Edition

by SAY

The Album: Skool Edition is an interactive dance created specifically for kids and their families. Come along to see:

- Combining fast-paced dance
- Exciting new music
- Interactive dance

## Performances Times

12pm

3pm

## Where to find

Barons Quay Square

Click here learn the dance routine  
before the festival!



# TOAST

by *Pif-Paf Theatre*

TOAST is a beautiful big hearted extravaganza of -

- Food
- Dance
- Live music
- Songs
- Tales from around the world

## Performances Times

2pm

4.30pm

## Where to find

Apple Market Place

Click here to see a video  
of the performance!



# The Peacock and the Princess

by *Sonia Sabri Company*

Interactive walkabout performance featuring a proud peacock and a princess. Come along to see:

- Beautiful costumes
- Interactive performance

Click here to see a video of the performance!



## Performances Times

12pm

1.30pm

3pm

## Where to find

Witton Street





# Herbert's Dream

by *Compagnie Des Quidams*

Gliding through the town centre, these figures relive Herbert's Dream.

Come along to see:

- A Parade
- Acrobatics
- Visual spectacle

Click here to see a video of the performance!



## Performances Times

Starts - 8:15pm

Ends - 9:30pm

## Where to find

Starts -

Northwich Library

Ends -

Barons Quay Square



We look forward to seeing you  
on Saturday 27th April

If you have any questions or queries before your visit,  
please contact us at:



[nownorthwiche@cheshiredance.org](mailto:nownorthwiche@cheshiredance.org)



01606 861 770

